

BoomPack

IN2UIT

Sound to go : iPad AIO BLUETOOTH SPEAKER CASE

IMPORTANT SAFETY INSTRUCTIONS

1. Read these instructions carefully.
2. Heed all warnings.
3. Use in accordance with the manufacturer's instructions.
4. Only use attachments/accessories specified by the manufacturer.
5. Clean only with a dry cloth.
6. Do not use or place this apparatus near water.
7. Do not use near any heat sources such as radiators, stoves, or other apparatus (including amplifiers) that radiate heat.
8. Protect the power cord from being trampled on, pinched or twisted at the plug & tail ends.
9. Unplug this apparatus during lightning storms or when unused for long periods of time.
10. Refer all servicing to qualified service personnel.
11. Servicing is required when the device has been damaged in any way.

WARNING

- ➔ To reduce the risk of fire or electrical shock, do not expose this equipment to dripping or splashing and ensure that no objects with liquids, such as vases, are placed near the device.
- ➔ Be advised that different operating voltages and power sockets require matching adaptors and plugs for your particular region.
- ➔ Always observe the local safety regulations.
- ➔ If using the device connected to an AC power supply,, disconnect the power supply cord from the AC outlet to completely turn off power and/or battery charging.
- ➔ Do not place the device in a confined space with limited ventilation or blockage.
- ➔ Do not open, disassemble or tamper with the device as there is a serious risk of electric shock.

Service

- ➔ There are no user-serviceable parts.
- ➔ All service must be performed by qualified personnel

CAUTION

- ➔ Users are advised that any tampering or modifications to the device that have not expressly stated in this manual could void your warranty

FEDERAL COMMUNICATIONS COMMISSION

(FCC) STATEMENT

This equipment has been tested and found to comply with the limits for a Class B digital device, Pursuant to Part 15 the FCC rules. These limits are designed to provide reasonable protection against harmful interference in a residential installation. This equipment generates uses and can radiate radio frequency energy and, if not installed and used in accordance with the instructions, may cause harmful interference to radio communications.

However, there is no guarantee that interference will not occur in a particular installation. If this equipment does cause harmful interference will not occur in a particular installation. If this equipment does cause harmful interference to radio or television reception, which can be determined by turning the equipment off and on, the user is encouraged to try to correct the interference by one or more of the following measures:

- Reorient or relocate the receiving antenna.
- Increase the separation between the equipment and receiver.
- Connect the equipment into an outlet on a circuit different from that to which the receiver is connected.
- Consult the dealer or an experienced radio/TV technician for help.

This device complies with part 15 of the FCC rules. Operation is subject to the

following two conditions:

(1) This device may not cause harmful Interference, and (2) This device must accept any interference received, including interference that may cause undesired operation.

FCC Caution: Any changes or modifications not expressly approved by the party responsible for compliance could void the user's authority to operate this equipment.

Contents

INTRODUCTION	1	TECHNICAL SPECIFICATIONS	14
PACKAGE CONTENTS	1	APPENDIX	14
Getting Started	2	Getting Started	15
Opening ELECTROSTATZ™ tweeters	2	Overview	16
Using the cover as a stand	3	Front view of the keyboard	16
OVERVIEW	5	Rear view of the keyboard	16
Front view of the speaker	5	LED Indication	17
Rear panel of the speaker	5	Hot Key Functions	17
OPERATING	6	Pairing the keyboard	18
Connecting to AC power	6	Troubleshooting and Tips	21
Inserting the iPad	6		
Control button	7		
Audio Playback via Bluetooth wireless connection	7		
Charging the battery	9		
Removing iPad	9		
System status indicator table	9		
Optimization of audio performance	10		
TROUBLESHOOTING	11		
CARE AND MAINTENANCE	12		
CONTACTING CUSTOMER SERVICE	13		
WARRANTY	13		

INTRODUCTION

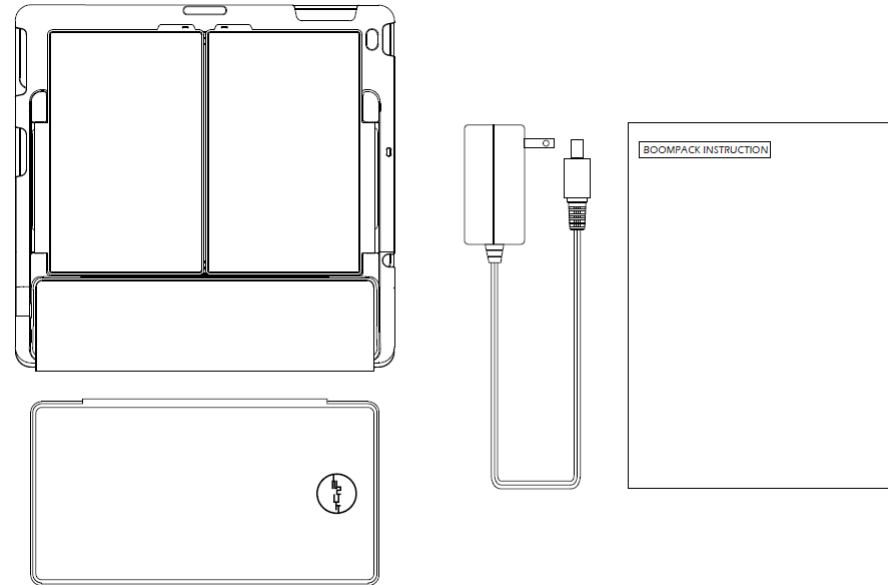
Dear Audiophile,

Thank you for purchasing 'BoomPack' by IN2UIT. BoomPack features hi-end electrostatic tweeters using the proprietary SBESL (Self-Biased ElectroStatic Loudspeaker) acoustic technology that we refer to as **ELECTROSTATZ™** Technology. The acoustic performance and reproduction are of the highest quality and level, revitalizing your many familiar sounding recordings into a new listening experience.

This advanced proprietary technology results from years of intense research and development. IN2UIT are one of the very few companies who have commercialized and realized this technology for the masses. Each **ELECTROSTATZ™** tweeter is constructed in state-of-the-art facilities using proprietary manufacturing techniques and equipment, cohering to rigorous standards and manufacturing processes. To reproduce the ultimate sound quality output from our devices, certain user requirements have been addressed in this owner's manual. By conforming to our tips and suggestions, you will achieve the maximum performance from the device. We wish you many years of enjoyment through BoomPack, our ultra-high performance Bluetooth mobile speaker.

PACKAGE CONTENTS

- 1 x BoomPack - Bluetooth mobile speaker device.
- 1 x BoomPack - Bluetooth keyboard (optional)
- 1 x 5V / 1A DC power adaptor (separated plug) (micro USB charger)



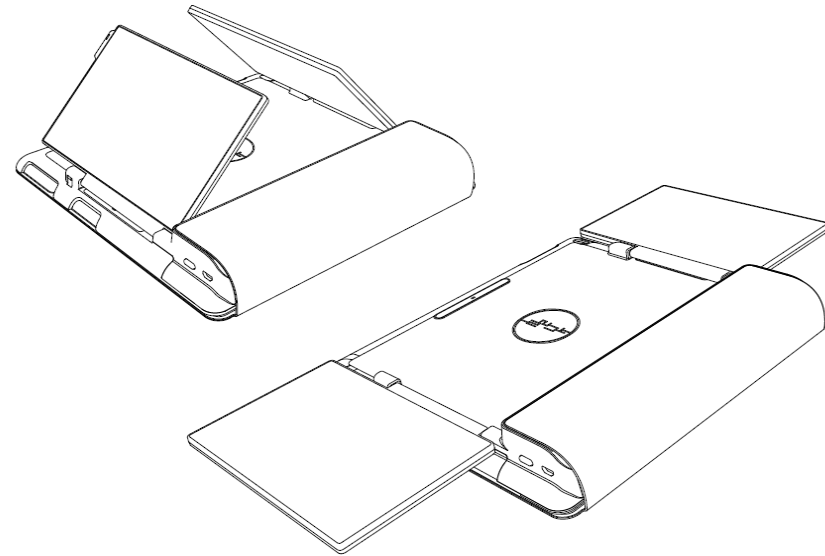
Getting Started

Opening ELECTROSTATZ™ tweeters

The **ELECTROSTATZ™** tweeters are positioned in the rear of the BoomPack case and held in position by hinges for convenient opening and closing. To avoid damage, do not open/close or pull on the **ELECTROSTATZ™** tweeters with too much force and do not over extend the tweeters past the engaged, listening position. Do not use the extended tweeters as handles when carrying or moving the BoomPack.

1. In the closed position, the **ELECTROSTATZ™** tweeters engage to the rear of the case with magnets that hold the panels shut for convenient mobility and storage
2. For the best acoustic performance, the Electrostatz tweeters should always be fully opened and facing the user when listening to BoomPack's audio playback.
3. To open the tweeters, gently rotate both panels outwards from the closed position to the engaged, listening position. The panels should be rotated until flush with the back surface of the rear case when fully engaged. Do not over extend the tweeters past the flush, engaged position as this will damage or break the Electrostatz tweeter panels
4. When fully opened and engaged the **ELECTROSTATZ™** tweeters will physically lock into position and the user will feel and hear the panels 'click' into position.
5. To close the panels, follow the above instructions in reverse order.

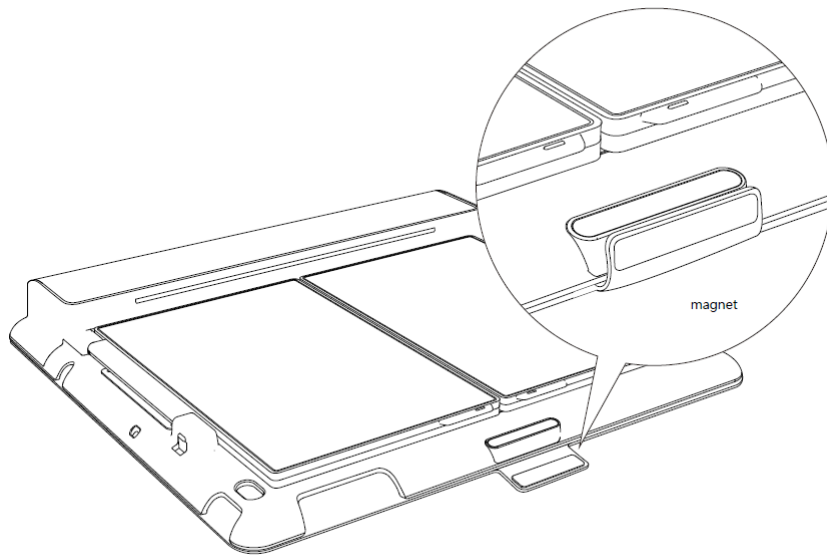
NOTICE: To avoid electric shock, do not use sharp objects such as pens or needles to prod or puncture the **ELECTROSTATZ™** tweeters.



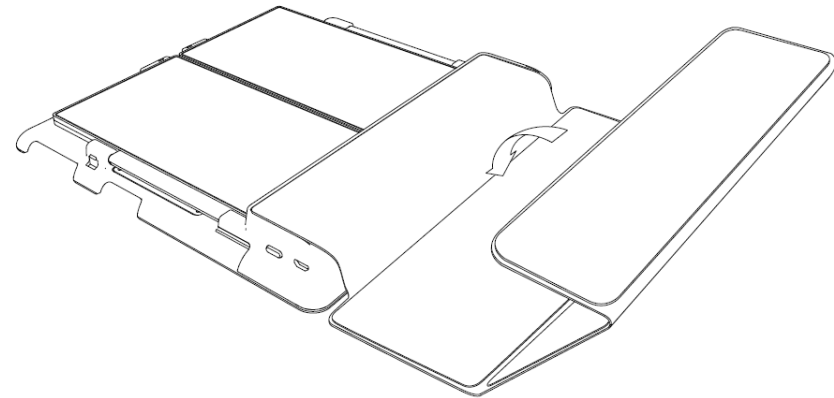
Using the cover as a stand

The display cover instantly attaches to the BoomPack with the magnetic tabs .

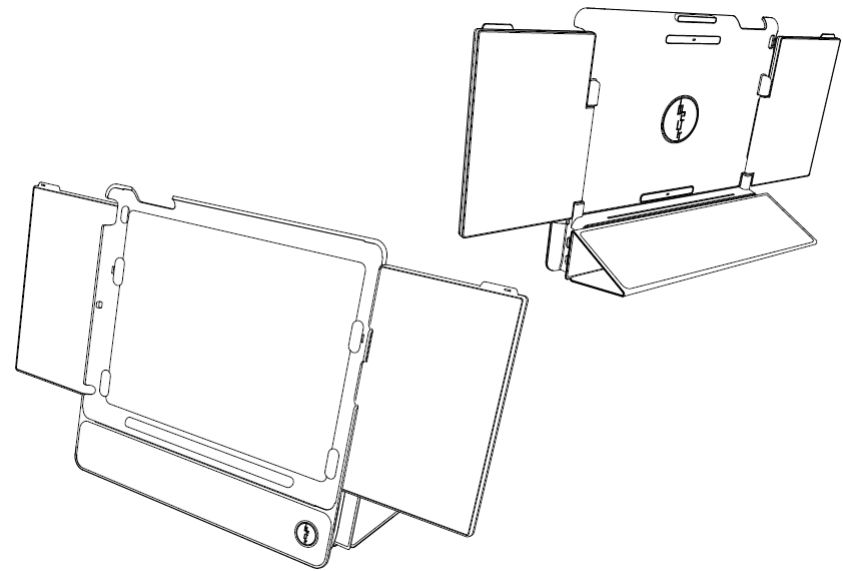
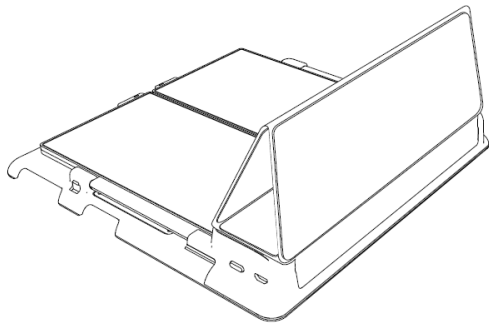
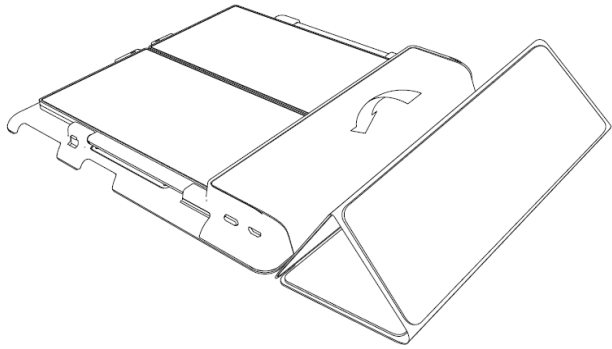
1. In the closed position, the cover attaches to the front side of the BoomPack. Pull on the magnetic tab to open the cover.



2. When the cover is folded up to act as a BoomPack stand, magnets inside the Smart Cover automatically attach to the rear, protruding area on the case. In the folded position the cover acts as a sturdy base.

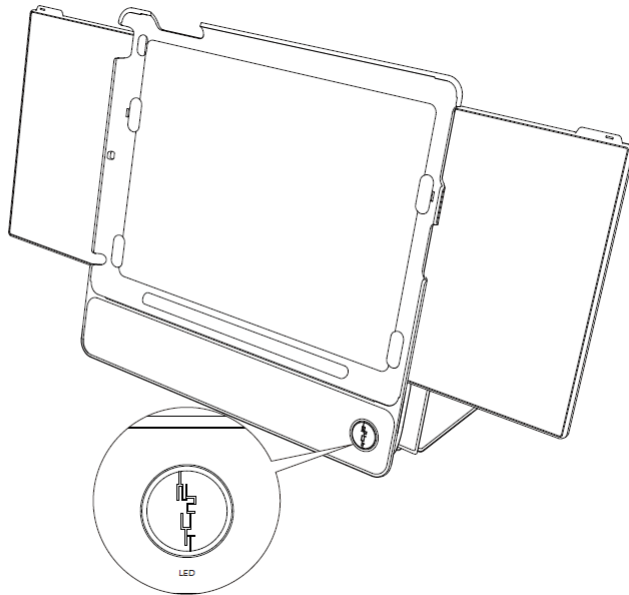


3. Lean the BoomPack against the folded up cover for a sturdy base and stand.



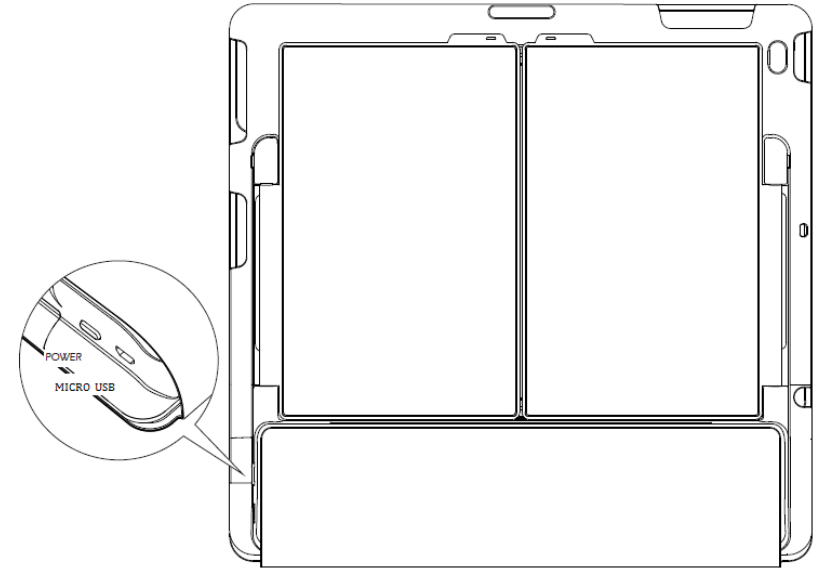
OVERVIEW

Front view of the speaker (opened position)



1. Receptacle fits both the iPad 2 and the New iPad
2. 2x SBESL **ELECTROSTATZ™** tweeters (LHS / RHS stereo sound)
3. 1x Power / Bluetooth LED indicator (IN2UIT LOGO) (inset picture)
4. 1x mic (under mesh , near IN2UIT LOGO)
1x foldable cover stand

Rear view of the speaker (closed position)



1. 2x SBESL **ELECTROSTATZ™** tweeter(LHS / RHS stereo sound)
2. Power / Bluetooth pairing button (inset picture)
3. 1x micro USB connector (inset picture)

OPERATING

NOTICE:

For safety purposes always turn off the main power switch when plugging or unplugging in the device **from the AC power socket**

Operating temperature is from -20 degrees to 40 degrees Celsius.

To avoid damage, don't put the speaker in high temperature environment .

Connecting to AC power

The universal power adaptor that comes with BoomPack accepts multiple voltages (100-240V); however users are advised to check regional AC voltage supply and plug type before connecting to the power supply. Prior to connecting to the power supply, make sure the speakers are switched off first. Engage the micro USB on the side of the device. Turn on the speakers' power as indicated below.

Inserting the iPad

Firstly, make certain the iPad is correctly orientated. Make sure all buttons, connectors and camera of the iPad are aligned before inserting your iPad into the Boompack receptacle. Place your iPad into the receptacle by inserting the bottom edge of your iPad first and making certain it is securely positioned and engaged with the corner underhooks. Rubber pads in the receptacle should facilitate correct iPad fit for both iPad 2 and the new iPad.. Once the iPad's lower edge is in position and secure, push the top edge of the iPad firmly into the receptacle and 'click' into its fully engaged position. Make sure the iPad is securely fixed before moving or using the BoomPack..

NOTICES:

- The BoomPack is designed for **iPad2** and **the new iPad**.
- If the battery of your iPad is extremely low, charge it before operation.

Control button



Action	Power On	Power On + Pairing	Re- Pairing (after power is on)	Power Off
Pressing Time	1.5 seconds	2 seconds	2 seconds	Instant off

Audio Playback via Bluetooth wireless connection

To begin pairing with your iPad for the first time

1. If the BoomPack device is already turned on, re-press and hold the power button on the device for an additional two seconds (pairing mode) to pair both devices for the first time. Please notice the LED will flash from blue to orange when in pairing mode.
2. If the device's power is off, press and hold the power button on the speaker for two seconds to both turn on and pair the speaker.
3. Enable the Bluetooth function on your iPad and start the Bluetooth search for the device named as **"IN2UIT BoomPack"**.
4. Choose and confirm the connection to **"IN2UIT BoomPack"** from your iPad. When the devices are successfully paired a 'Beep' will ring out.
5. After successful connection, you are ready to listen to audio playback from your iPad. Adjust the required volume on your iPad for comfortable and non distorted playback. Maximum volume output may cause clipping on some types of music.

NOTICES:

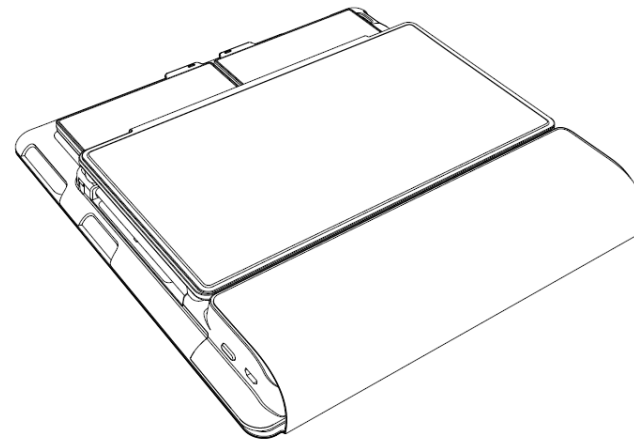
- Pairing occurs when two Bluetooth devices communicate with each other and establish a connection. A record of information about this connection is then stored in the memory of each device. Once you connect your iPad with the BoomPack, you should not have to pair it again.
- You may have to enter the password “0000” in order to connect some Bluetooth devices
- **Setting up for conference calls.** BoomPack supports Bluetooth hands-free profile. You can use Skype and FaceTime on your iPad connected to BoomPack for easy conference calling.
- Automatic Power shutdown. If there is no Bluetooth connection for over 10 minutes, the system will automatically shutdown. The user will need to re-power the device after automatic shutdown.

Portable Operation

BoomPack is designed for mobile and convenient household and office usage as a wireless Bluetooth speaker. It can be easily placed on any flat surface. BoomPack can operate for up to 10 hours on a full battery charge. If battery capacity is running low, the red LED indicator will flash twice per second to remind you to recharge the device.

NOTICE: Perfect carrying case. You don't need to remove the iPad when you want to use the BoomPack in other places. The cover of the BoomPack protects the iPad screen

NOTICE: Manually put your iPad into sleep mode, the BoomPack cover does not have the sleep function mode



Charging the battery

To charge the battery, plug the power adaptor cable into the micro USB on the side of the BoomPack speaker. Recommended charging time is 3 hours. The red LED indicator will flash every 2 seconds when in charging mode and will cease flashing when fully charged.

NOTICE: You can simultaneously charge your iPad and BoomPack. The iPad charging port is completely accessible on the BoomPack. Use the charging cable provided by Apple to separately charge iPad.

Removing iPad

1. Close the **ELECTROSTATZ™** tweeters and shutdown the power of BoomPack before inserting or removing iPad.
2. Remove iPad from the top edge first
3. Press the top edge corners of BoomPack first, one at a time, disengaging the top corners of the iPad from the BoomPack
4. Pull out the iPad from the receptacle carefully, top edge of the iPad should be removed first.
5. Inserting the iPad is in the reverse order of the above sequence

System status indicator table

LED Indication table

Table 1 status indication

	Status		
LEDs	BT Connected	Pairing	Not paired
Blue	On	Flash(0.5s)	On
Red/Orange?	Off	Flash(0.5s)	On

Table 2 charging indication

	Status			
	If speaker is turned on			If speaker is turned off
	BT Connected	Pairing	Not paired	
Charging	Blue-LED flashes twice every 5 seconds	No effect	Blue-LED and Red-LED flash twice every 5 seconds	Red-LED on
Fully charged	No effect . LED indicator display same as table1			Every LED off

Beep indication table

	Status				
Tones	Power On	Power Off	Connected	Disconnected	Low battery
High	3rd	1st	1st		
Mid	2nd	2nd			
Low	1st	3rd		1st	1 st +2 nd
Actions	Low to high (triple)	High to low (triple)	High (once)	Low (once)	"Beep" twice every 20 seconds

Optimization of audio performance

IN2UIT systems feature proprietary, leading edge Electrostatic Loudspeaker (ESL) technology that we call our **ELECTROSTATZ™** tweeter technology. The ethereal acoustic characteristics provide the user with the highest class of audio playback. In order to maximize this performance, it is advised to read the following instructions:

1. **ELECTROSTATZ™** tweeters are dipole transducers. This means the sound waves are transmitted from both sides of the diaphragm in opposite polarity. A dipole transducer produces one sound wave to the front and another sound wave to the rear.
2. When correctly positioned, for example, closer to the wall, the reflected ESL back sound wave can be amplified and help create a wider, deeper sound stage for more realistic acoustic performance. The result is life-like music reproduction previously unachieved in the market place of comparably sized audio systems.

TROUBLESHOOTING

Problem	Action
Speaker will not turn on (AC power)	<ul style="list-style-type: none"> • Make sure your system is connected to a working AC (mains) outlet.
Speaker will not turn on (battery power)	<ul style="list-style-type: none"> • Battery may be discharged – connect to working AC (mains) outlet to recharge the battery to operational mode.
Paired iPad will not connect	<ul style="list-style-type: none"> • Turn the BoomPack speaker off and back on again • Remove the BoomPack speaker from the pairing list on your iPad pairing list (consult the device owner's manual for assistance). Then pair the iPad and the BoomPack speaker again.
BoomPack speaker indicates a connection, but is not playing music	<ul style="list-style-type: none"> • Turn off or disable Bluetooth on the iPad and reconnect the iPad. • Turn the BoomPack speaker off and back on again.

Cannot pair the BoomPack speaker with my iPad	<ul style="list-style-type: none"> • Make sure your BoomPack speaker is discoverable. Press and hold the power button (three seconds) until the LEDs slowly flash. • Make sure the Bluetooth capability of your iPad is turned on. • Make sure your iPad supports the transfer of audio. • Move your iPad and/or BoomPack speaker away from other devices that generate electromagnetic interference. Examples are cordless phones, microwave ovens, wireless network routers, or other Bluetooth devices. • If possible, turn off all other nearby Bluetooth devices. • Turn the BoomPack speaker off and back on. • Refer to the owner's guide, help system, or technical support for your mobile device to learn how it pairs with other Bluetooth devices.
No audio from iPad	<ul style="list-style-type: none"> • Make sure your iPad is playing audio, and the volume is up. • Turn the BoomPack speaker off and back on again.

<p>Poor sound quality from iPad</p>	<ul style="list-style-type: none"> • Move your iPad and/or BoomPack speaker away from any device that generates electromagnetic interference, such as another Bluetooth device, cordless phone, microwave oven, or wireless router. • Reduce the number of applications running on your iPad. Running multiple applications can reduce the amount of internal resources available to transmit audio. Closing non-essential applications may improve audio quality. • Try turning off Wi-Fi to improve audio quality. • Try un-pairing your iPad from the BoomPack speaker and then re-pairing the two. This action can possibly clear issues that might have occurred during initial device pairing. • Turn the BoomPack speaker off and back on
-------------------------------------	---

CARE AND MAINTENANCE


Components of the highest quality are used in **BoomPack**. This assures years of trouble free operation. The following precautions should still be strictly adhered to.

Cleaning

Use a specialized cleaning brush or vacuum cleaner (low setting) with nozzle attachment to the device. If you wish to use a cleaning agent, apply it onto the cleaning cloth, not directly onto the product. Test a small area first, as some cleaning products may damage the surfaces and materials. Avoid products that are abrasive, contain acid, alkali or anti-bacterial agents.

Recycling used products



 This product is subjected to the European Union Waste Electrical and Electronic Equipment directive (WEEE), 2002/96/EC. This product must not be disposed of as unsorted municipal waste and must be collected separately and disposed according to your national regulations.

CONTACTING CUSTOMER SERVICE

For questions concerning the BoomPack wireless, mobile speaker, contact your local IN2UIT dealer. To contact IN2UIT directly, consult the contact information included with your BoomPack speaker or visit **www.IN2UIT.com**

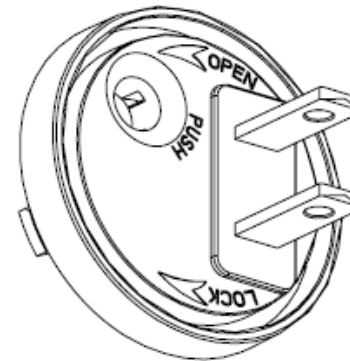
WARRANTY

- The warranty only covers faults or defects in material and production. Damage caused as a result of abuse, misuse or tampering is not covered by the warranty.
- All warranty claims must be accompanied by a copy of the original filled out warranty document and certified by your dealer.
- Purchasing invoice and warranties are only valid in the country or market of original origin and distribution. Should warranty service be required, it must be arranged for in the country of purchase by an authorized dealer.

TECHNICAL SPECIFICATIONS

System	Two-way active speaker Bluetooth speaker with mic
Frequency Response (+/- 3 dB)	170Hz – 30kHz
Sensitivity (1m/1W on axis)	80dB
Power consumption	Idle: 2W / Max: 2.5W
Amplifier power	Tweeter: 2+2W / Woofer: 2+2W
Bass Principle	Closed
Crossover Frequency	1.6 kHz
Crossover Slope	12db/Oct
Tweeter	ELECTROSTATZ™ ESL x 2
Woofer	31mm PP cone x 2
Weight (Kg)	0.58kg
Dimensions (W x H x D) (mm)	246 X 232 X 30
Bluetooth Specification	Version 2.1 + EDR
Supported Bluetooth Profiles	A2DP, Hands-Free
Bluetooth operating Range	Up to 10 meters
Battery	Li-Ion Polymer 3.7V, 1500mAh

APPENDIX



- Hold down the push button then rotate counterclockwise to open the plug from the adapter.
- Hold down the push button then rotate clockwise to lock the plug on the adapter.

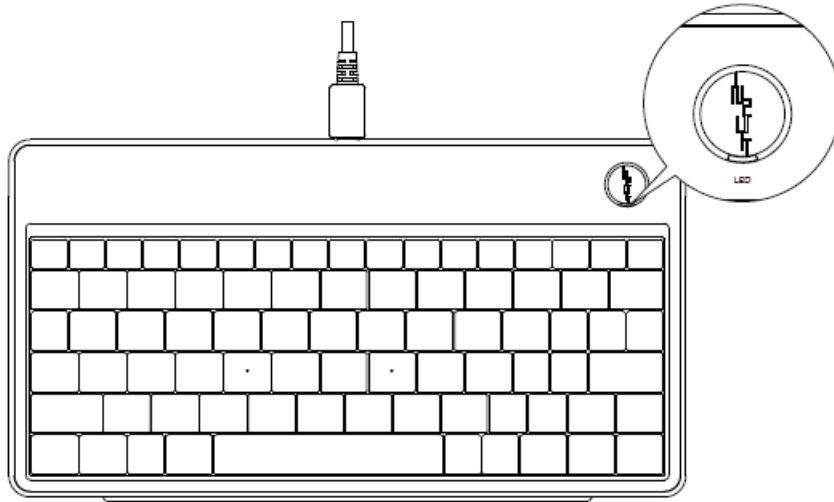
BLUETOOTH KEYBOARD(OPTIONAL)

Getting Started

Thank you for choosing this ultrathin keyboard with Bluetooth technology to ensure no hinder communication between the keyboard and your computer without connecting cable. The transmission and receiving of keyboard are free from angle restriction with operation distance for 10 meters.

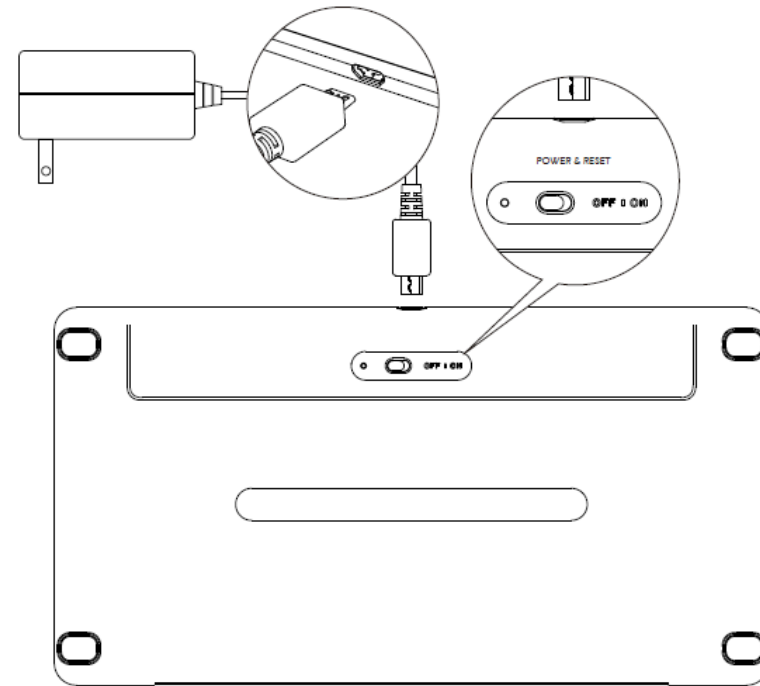
Overview

Front view of the keyboard



-
1. 1x Power / Bluetooth LED indicator (IN2UIT LOGO) (inset picture)

Rear view of the keyboard



-
1. Power / Bluetooth pairing button (right inset picture)
 2. 1x micro USB (left inset picture)

LED Indication

➤ Battery Status



Battery low : Red Led flashes slowly

Charging : Red Led flashes quickly

Fully Charged : Led goes off

➤ Connect Status



Power On: Green Led brighten for few seconds

Pairing : Green Led flashes for approximately 3 minutes

Searching: Green Led flashes till search is finished

Hot Key Functions

(ESC) : Go to Home Screen

(F1) : Hide or Unhide Screen Keyboard In

I-pad

(F2) : Activate Default Search Function

(F3) : Language Selection

(F4) : Screen Lock

(F5) : Photos

(F6) : Select All

(F7) : Copy

(F8) : Paste

(F9) : Cut

(F10): Go to Previous Track

(F11): Play/Pause

(F12): Go to Next Track

: Mute

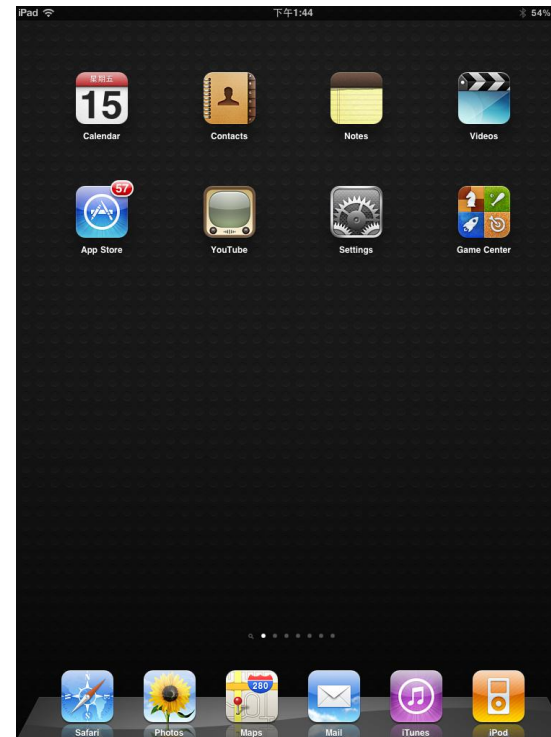
: Volume Down

: Volume Up

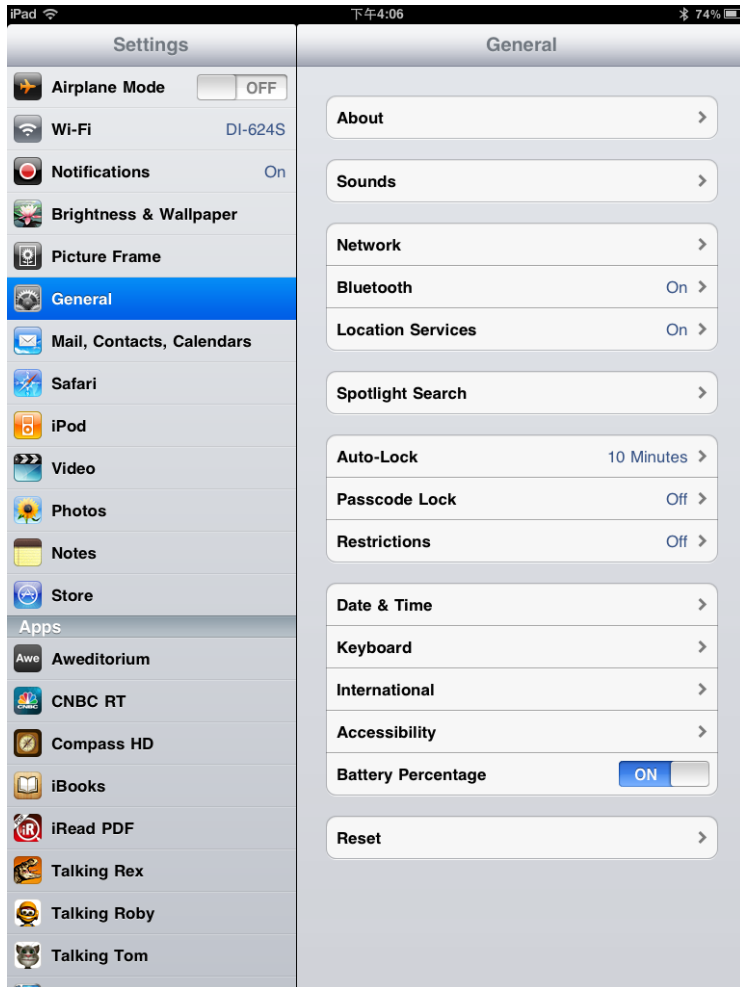
Pairing the keyboard

1. Set power switch in the back of the keyboard to “On”

2. Tap the settings icon



3. Under General, tap on Bluetooth



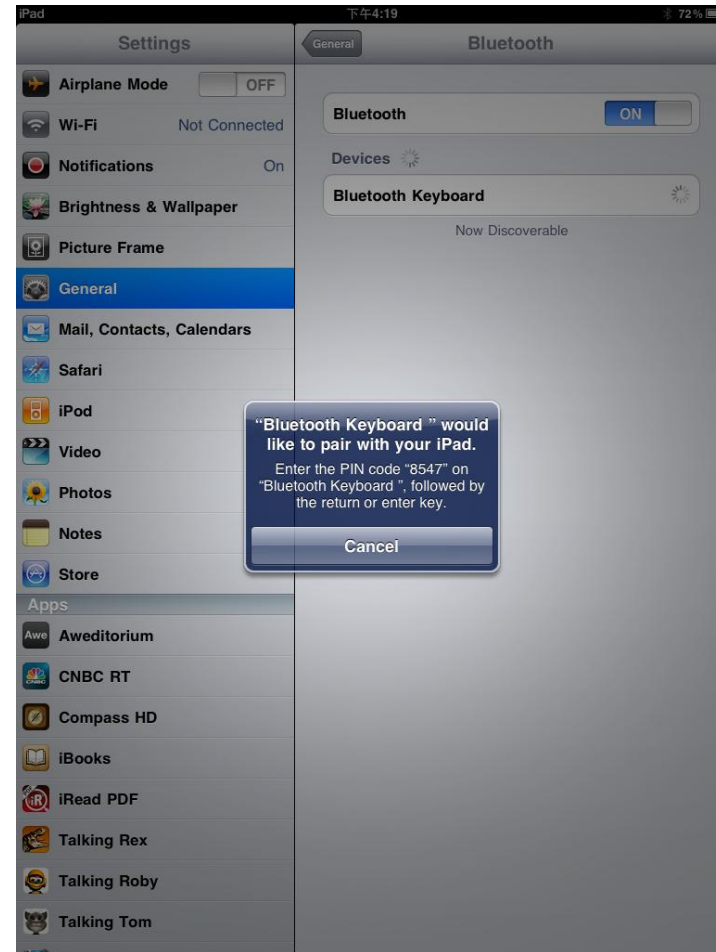
4. Turn Bluetooth ON from iPad



5. Press Connect Button in the bottom of the keyboard. You will see a Green Led flashing on IN2UIT LOGO.



6. Tab on “IN2UIT BT Keyboard”, and you will be requested to enter a passkey on the keyboard



7. When the pairing finishes, you can see the IN2UIT BT Keyboard is connected.



Troubleshooting and Tips

When the keyboard doesn't function or stop working, please help check below:

- Make sure the rechargeable battery is not too weak.
- To determine whether the keyboard, mouse or computer cause the problem, please test the keyboard and mouse on second computer if possible; or test another keyboard and mouse on your current computer.

If you are still unable to solve the problem, please contact your point of sale or your dealer.

FEDERAL COMMUNICATIONS COMMISSION

(FCC) STATEMENT

This equipment has been tested and found to comply with the limits for a Class B digital device, Pursuant to Part 15 the FCC rules. These limits are designed to provide reasonable protection against harmful interference in a residential installation. This equipment generates uses and can radiate radio frequency energy and, if not installed and used in accordance with the instructions, may cause harmful interference to radio communications. However, there is no guarantee that interference will not occur in a particular installation. If this equipment does cause harmful interference will not occur in a particular installation. If this equipment does cause harmful interference to radio or television reception, which can be determined by turning the equipment off and on, the user is encouraged to try to correct the interference by one or more of the following measures:

- Reorient or relocate the receiving antenna.
- Increase the separation between the equipment and receiver.
- Connect the equipment into an outlet on a circuit different from that to which the receiver is connected.
- Consult the dealer or an experienced radio/TV technician for help.

This device complies with part 15 of the FCC rules. Operation is subject to the following two conditions:

(1) This device may not cause harmful Interference, and (2) This device must accept any interference received, including interference that may cause undesired operation.

WARNING:

You are cautioned that changes or modifications not expressly approved by the party responsible for compliance could void your authority to operate the equipment.

CAUTION: AVOID PROLONGED USE OF THE KEYBOARD WITHOUT BREAKS.

Take regular breaks and keep a good posture. Consult your physician promptly if you notice any lost of motion or pain in your wrist when using the keyboard.

CAUTION!

RISK OF EXPLOSION IF BATTERY IS REPLACED BY AN INCORRECT TYPE.
DISPOSE OF USED BATTERIES ACCORDING TO THE INSTRUCTIONS

BoomPack

Sound to go : iPad AIO BLUETOOTH SPEAKER CASE