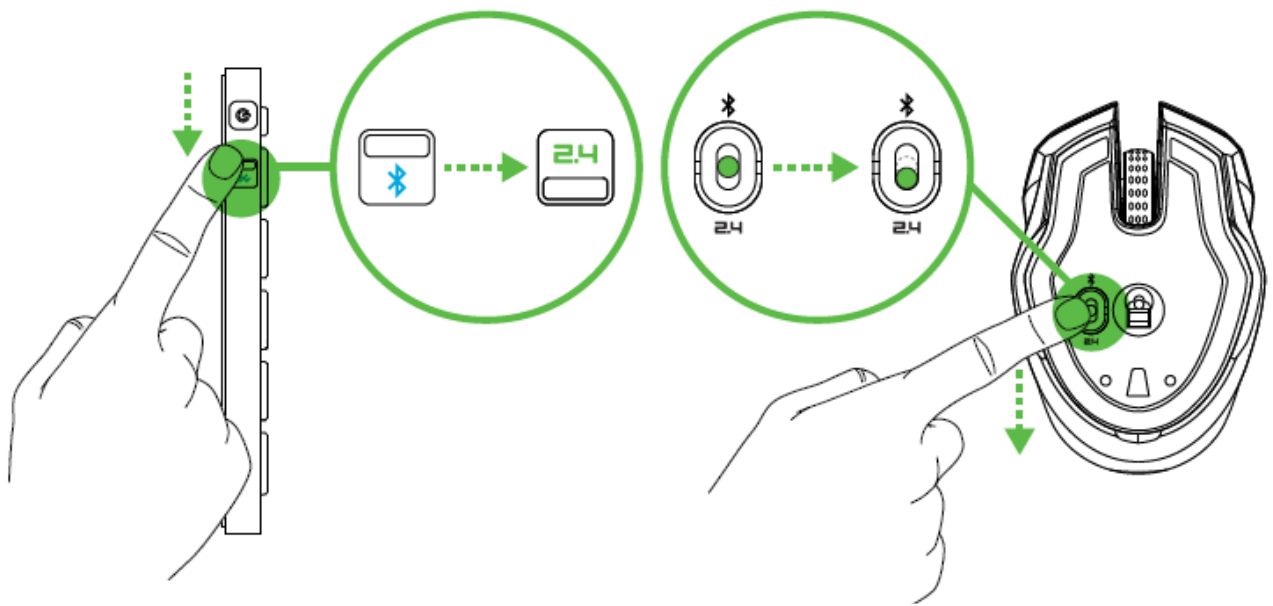


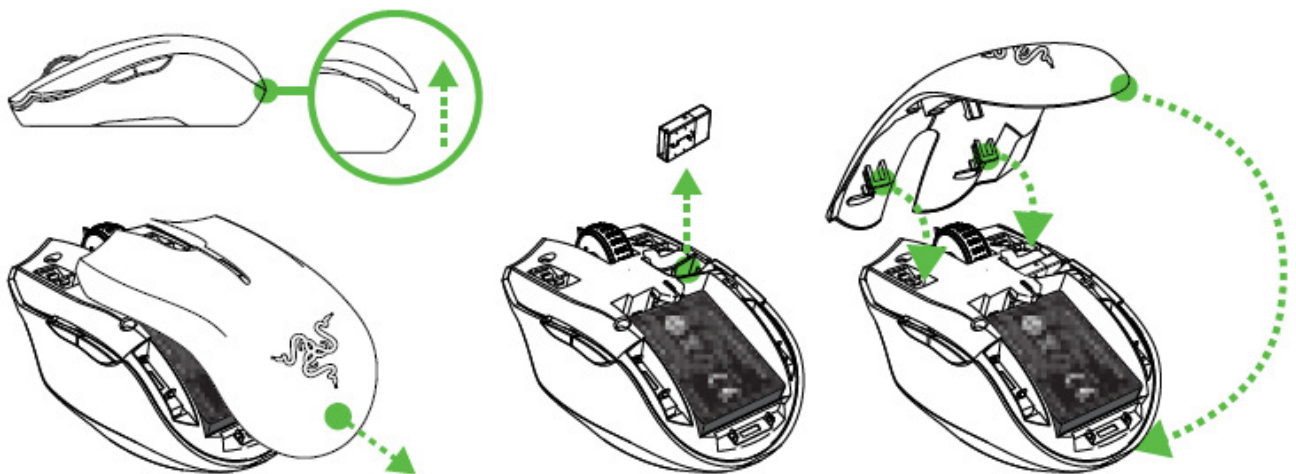
# User 's Guide

## CONNECTING THE RAZER TURRET VIA THE WIRELESS DONGLE

1. Push the Slider switch on both the lapboard and mouse to (2.4GHz wireless).



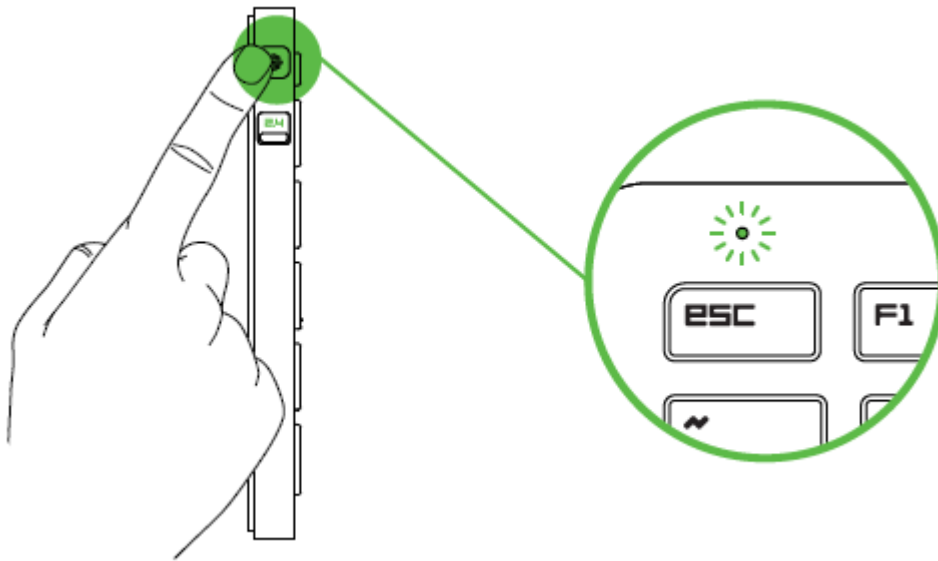
2. Remove the top cover of the mouse by lifting the back of the top cover and pulling it backwards. Retrieve the USB dongle. Reattach the top cover.



3. Plug the USB dongle to the device you wish to pair to.



4. Press the Power button to turn the lapboard on.



5. When successfully connected, the LED indicator will stay lit in green for 5s before fading off.

## **REGULATORY & COMPLIANCE INFORMATION**

### **FCC DECLARATION OF CONFORMANCE**

This equipment has been tested and found to comply with the limits for a Class B digital device, pursuant to part 15 of the FCC Rules. These limits are designed to provide reasonable protection against harmful interference in a residential installation. This equipment generates, uses and can radiate radio frequency energy and, if not installed and used in accordance with the instructions, may cause harmful interference to radio communications. However, there is no guarantee that interference will not occur in a particular installation. If this equipment does cause harmful interference to radio or television reception, which can be determined by turning the equipment off and on, the user is encouraged to try to correct the interference by one or more of the following measures:

- Reorient or relocate the receiving antenna.
- Increase the separation between the equipment and the receiver.
- Connect the equipment into an outlet on a circuit different from that to which the receiver is connected.
- Consult the dealer or an experienced radio TV technician for help.

For more information, refer to the online help system on [www.razerzone.com](http://www.razerzone.com).

### **FCC CAUTION STATEMENT**

Any changes or modifications not expressly approved by the party responsible for compliance could void the user's authority to operate this equipment.

This device complies with Part 15 of the FCC Rules. Operation is subject to the following two conditions:

- (1) This device may not cause harmful interference, and
- (2) This device must accept any interference received, including interference that may cause undesired operation

**Responsible party information:**

Razer Inc.  
2035 Corte Del Nogal #101  
Carlsbad, CA 92011  
Phone Number: +1 (760) 579-0180

**INDUSTRY CANADA STATEMENT**

This device complies with RSS-210 of the Industry Canada Rules. Operation is subject to the following two conditions:

- (1) This device may not cause harmful interference, and
- (2) this device must accept any interference received, including interference that may cause undesired operation.

Ce dispositif est conforme à la norme CNR-210 d'Industrie Canada applicable aux appareils radio exempts de licence. Son fonctionnement est sujet aux deux conditions suivantes:

- (1) le dispositif ne doit pas produire de brouillage préjudiciable, et
- (2) ce dispositif doit accepter tout brouillage reçu, y compris un brouillage susceptible de provoquer un fonctionnement indésirable