



The Razer Naga Epic MMO Gaming Mouse is the upgrade to the original award-winning and massively popular Razer Naga that shifts the balance between the keyboard and mouse with its 17 MMO-optimized buttons.

The Razer Naga Epic takes it one step further by combining this with the dual mode wired/wireless functionality and interchangeable side panels, designed by the world-acclaimed Razer ergonomics team, which provides an optimal fit for various hand sizes and grip styles so you can raid in comfort for hours on end. With the Razer Naga Epic, prepare to Get Imba again.

From the casual MMO gamer to the serious hardcore raider, the Razer Naga Epic will take you to the head of the pack in both PVE and PVP action.

Buff it with the Razer Anansi MMO gaming keyboard to use the Razer Naga Epic's 12-button mouse keypad seamlessly with the keyboard's 7 thumb modifier keys, giving you an unprecedented level of battle control while dual-wielding the world's most phenomenal weapons for MMO gaming dominance.

TABLE OF CONTENTS

1. PACKAGE CONTENTS / SYSTEM REQUIREMENTS / REGISTRATION	2
2. DEVICE LAYOUT	3
3. SETTING UP YOUR RAZER NAGA EPIC	5
4. USING YOUR RAZER NAGA EPIC.....	9
5. INSTALLING YOUR RAZER NAGA EPIC	11
6. CONFIGURING YOUR RAZER NAGA EPIC.....	12
7. SAFETY AND MAINTENANCE	31
8. LEGALESE	33

1. PACKAGE CONTENTS / SYSTEM REQUIREMENTS / REGISTRATION

PACKAGE CONTENTS

- Razer Naga Epic Elite MMO Gaming Mouse
- 3 Interchangeable Side Panels
- Charging Dock
- Lithium-Ion Polymer Battery
- USB Cable
- Grid Trainer
- Quick Start Guide
- Master Guide

SYSTEM REQUIREMENTS

- PC or Mac with a free USB port
- Windows® 8 / Windows® 7 / Windows Vista® / Windows® XP (32-bit) / Mac OS X (10.6 - 10.8)
- Internet connection
- 100MB of free hard disk space

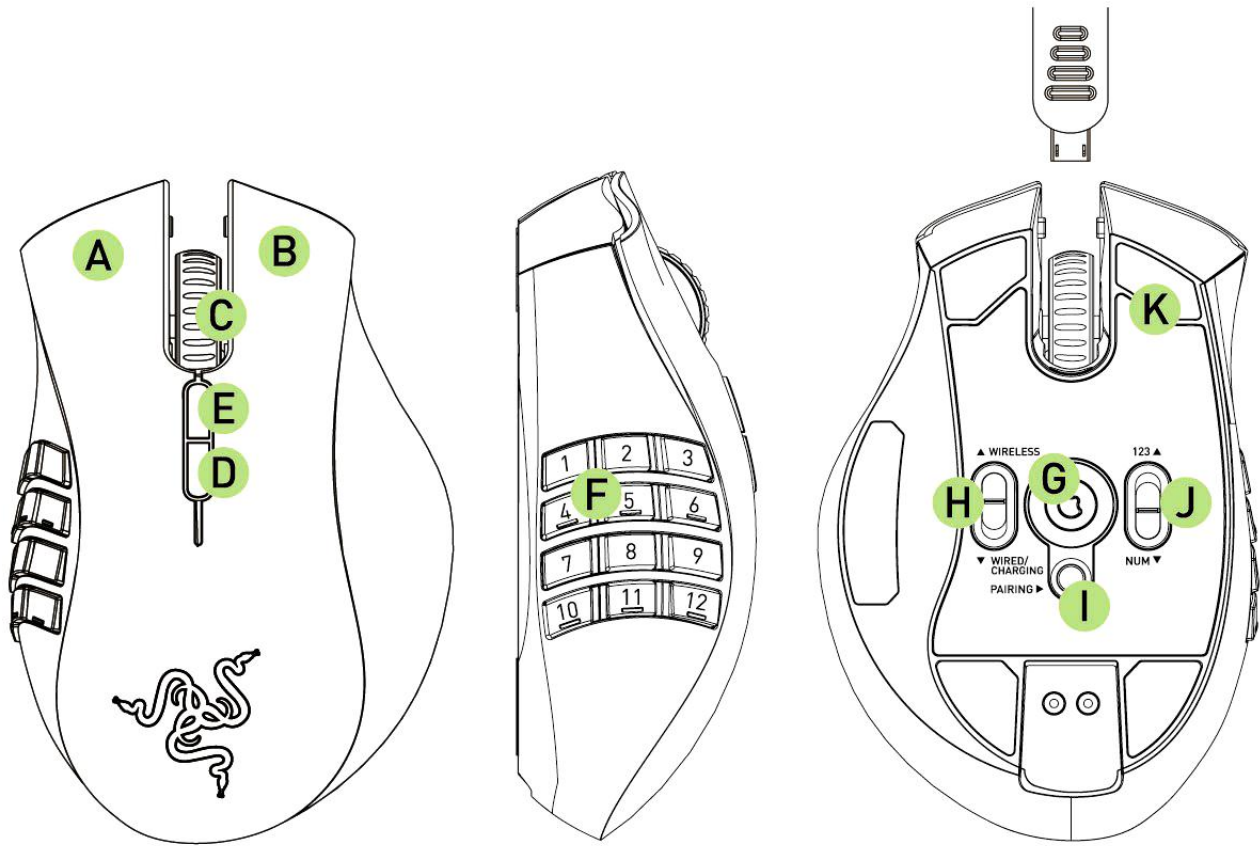
REGISTRATION

Please visit www.razerzone.com/registration for online product registration.

What you'll get:

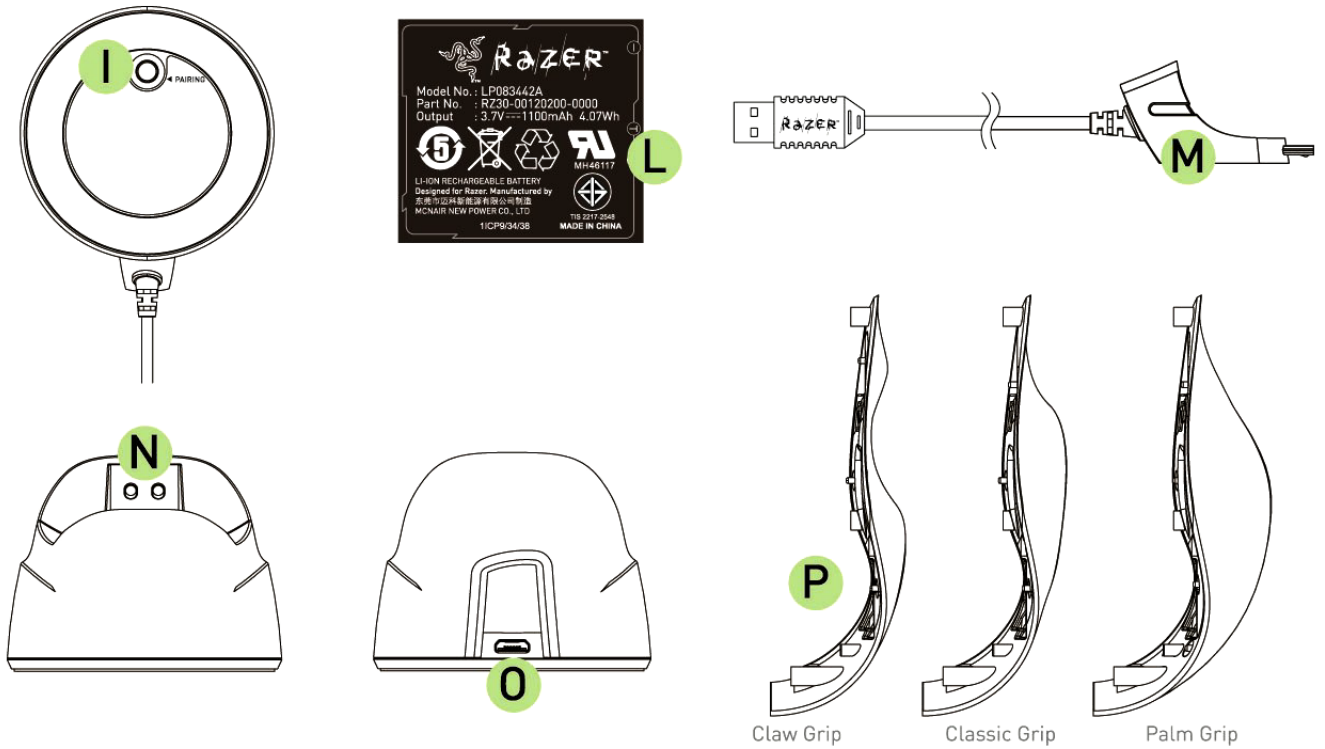
- 2 years limited manufacturer's warranty.
- Free online technical support at www.razersupport.com.

2. DEVICE LAYOUT



- A. Left Mouse Button
- B. Right Mouse Button
- C. Scroll Wheel
- D. Mouse Button 5
- E. Mouse Button 4
- F. Thumb Grid - 12 Buttons (Action Bar for MMO games)
- G. Razer Precision 3.5G Laser Sensor
- H. Wireless and Wired/Charging Switch *
- I. Pairing Button
- J. Basic [123] / Advanced [Num] Switch
- K. Ultraslick Mouse Feet

** For optimum battery life, always move the switch to the Wired/Charging position when not using your Razer Naga Epic in wireless mode.*



- L. Rechargeable Battery
- M. Cable Connector Jack
- N. Battery Charging Connector
- O. Connector Jack (Charging Dock)
- P. 3 Interchangeable Side Panels – Classic Grip, Claw Grip, Palm Grip (default)

3. SETTING UP YOUR RAZER NAGA EPIC

CHARGING THE RAZER NAGA EPIC

	Charging	Fully Charged
Wireless Mode - Spectrum Cycling option selected	Pulsating	Spectrum Cycling
Wireless Mode - Color option selected	Pulsating	Constant Glow

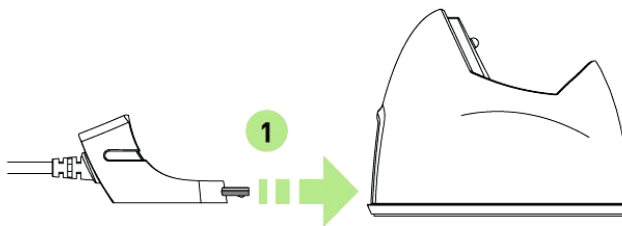
For best results, please charge the battery fully the first time you use the Razer Naga Epic. A depleted battery will be fully charged in about 5 hours. If the mouse has not been used for an extended period, the battery might need to be recharged before usage.

The Razer Naga Epic requires a USB connection that is able to supply sufficient power during battery charging process. The battery charging process of the Razer Naga Epic may be affected if connected to a non-powered USB hub or non-powered USB ports found on certain keyboards and other peripherals.

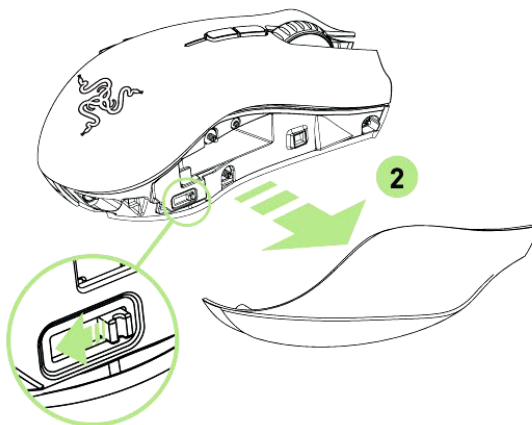
When in doubt, it is preferable to connect the Razer Naga Epic directly to the USB port found on the CPU unit of your computer system.

WIRELESS MODE

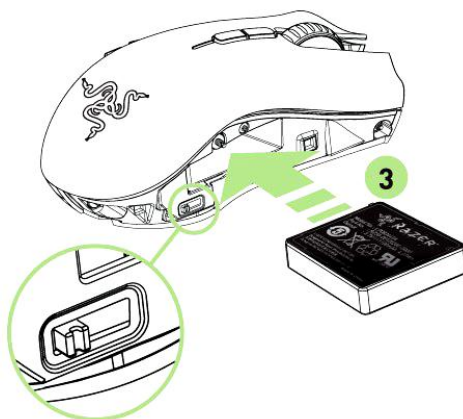
1. Connect the Cable Connector Jack to the Charging Dock.



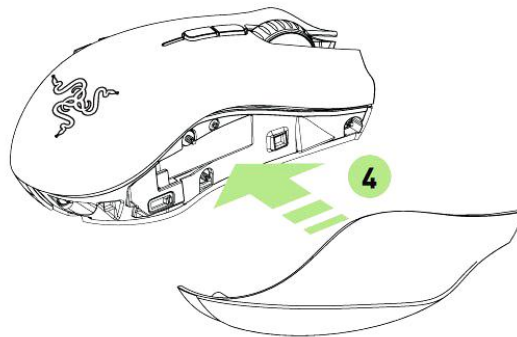
2. Remove the side panel of the Razer Naga Epic.



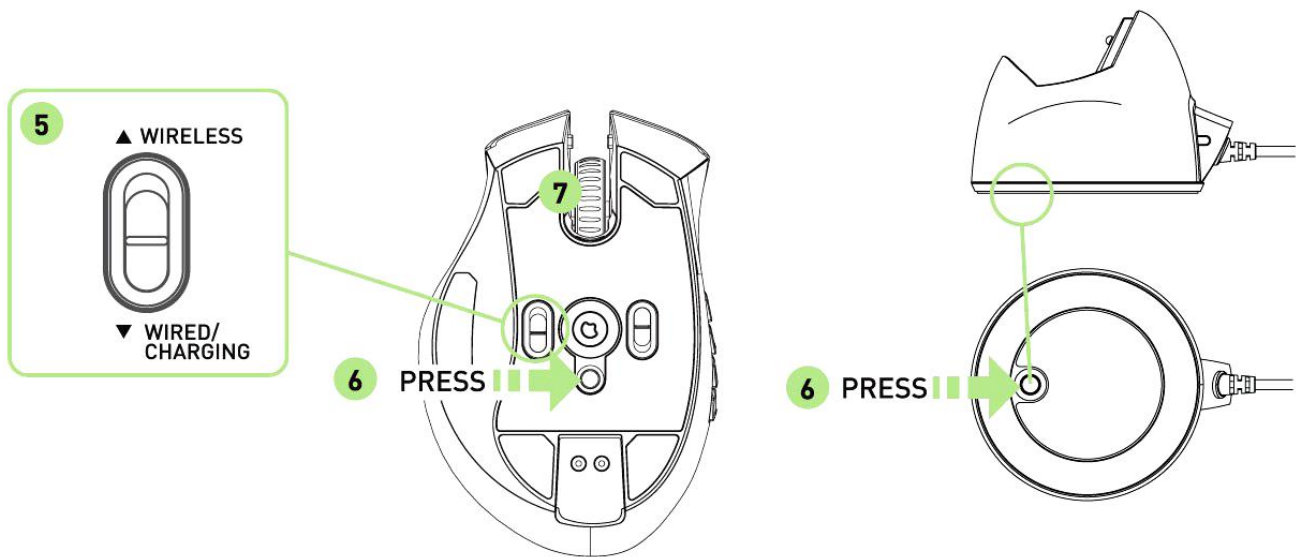
3. Slide the lock switch and insert the battery into the battery compartment. (Sliding the lock switch again will allow you to remove the battery).



4. Replace the side panel.



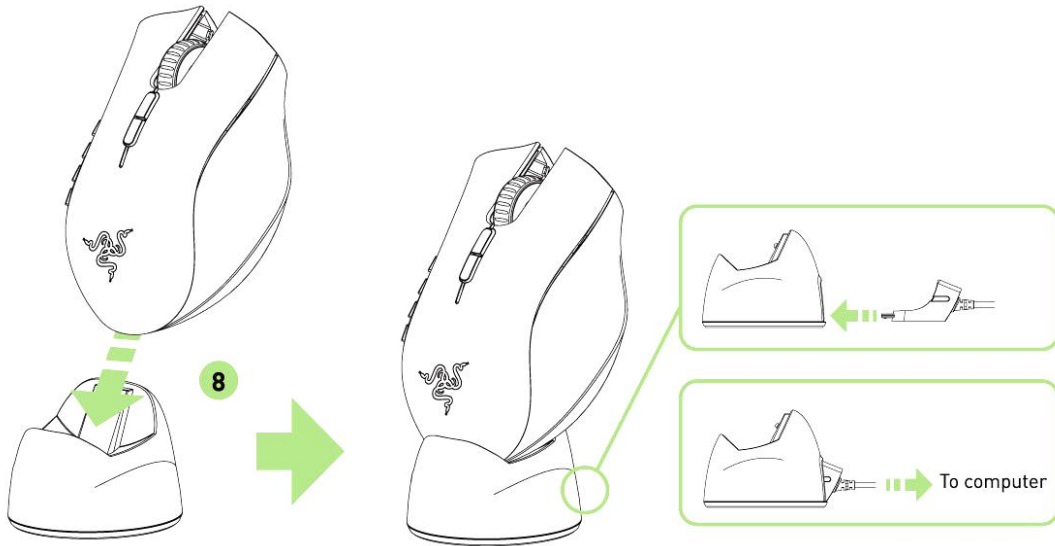
5. Slide the shown switch to the Wireless position. To conserve battery power, always move the switch to the Wired / Charging position when not using your mouse in wireless mode.



6. Press the pairing buttons on the Razer Naga Epic and Charging Dock. The lights on the Razer Naga Epic will start flashing to indicate the pairing process.

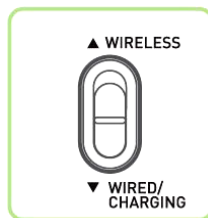
7. When the pairing process is completed, the lights on the Razer Naga Epic will stop blinking. Your Razer Naga Epic is then ready for use in wireless mode.

8. To charge the Razer Naga Epic in wireless mode, ensure that the shown switch is set to the Wired/Charging position and place it on the Charging Dock.

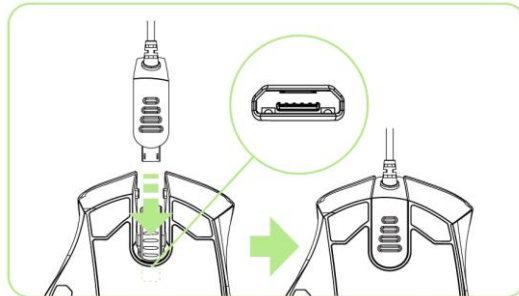


WIRED MODE

1. Do ensure that the shown switch is set to the Wired/Charging position.



2. Connect the Cable Connector Jack to the Razer Naga Epic.



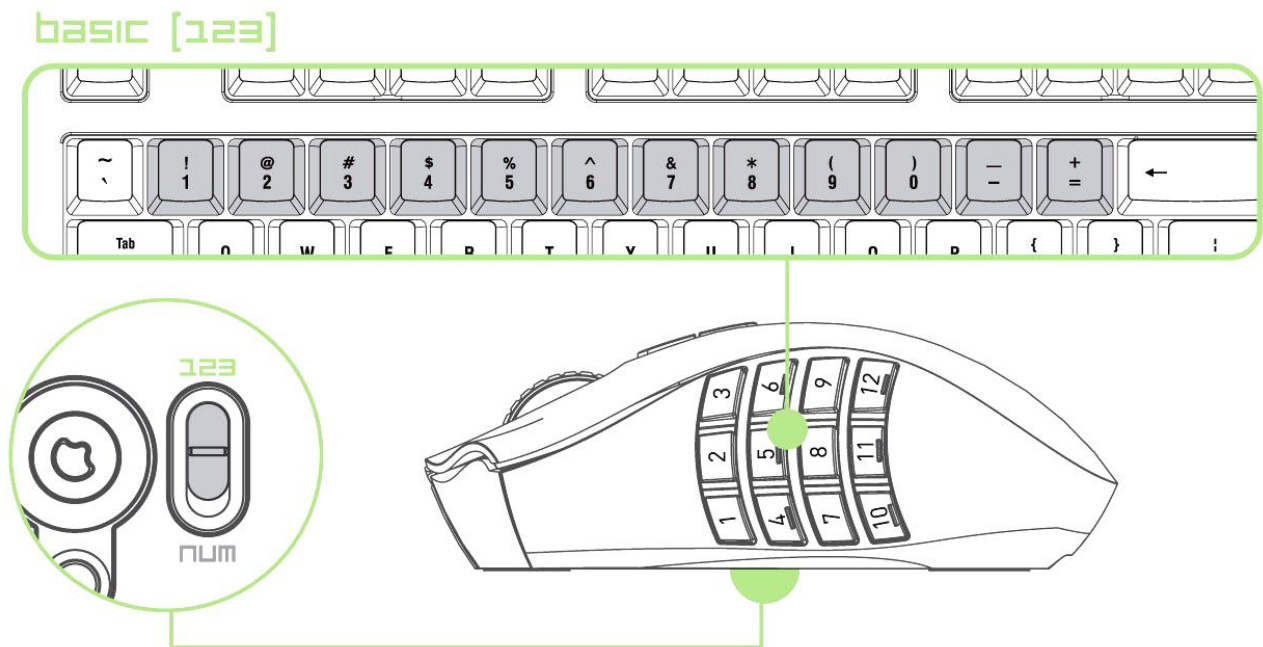
3. Plug mouse into the USB port of your computer. The Razer Naga Epic is then ready for use as a high performance wired mouse. In addition, its battery will start charging automatically in this wired mode.

4. USING YOUR RAZER NAGA EPIC

USING BASIC [123] AND ADVANCED [NUM] MODES

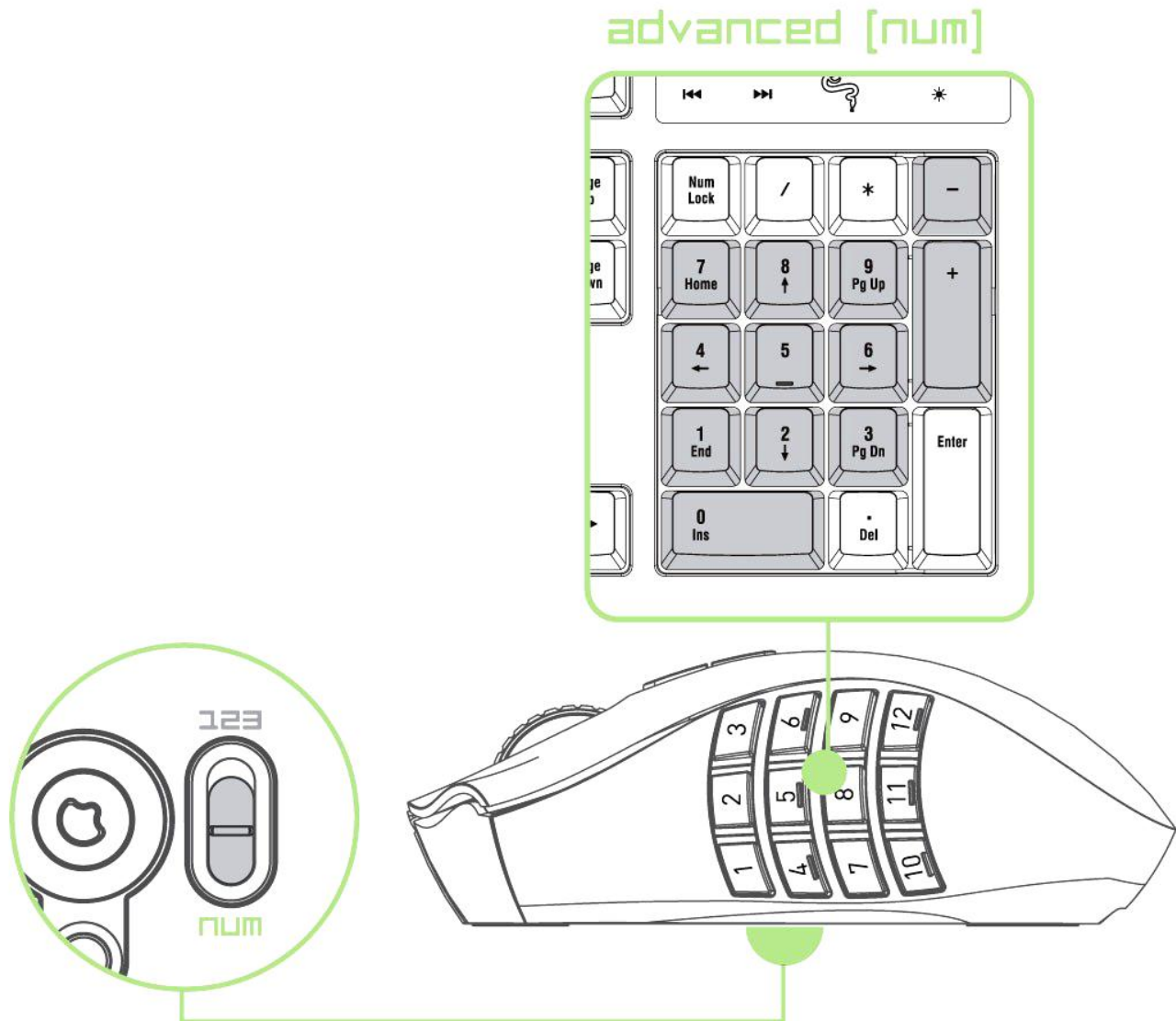
The Razer Naga Epic provides a 12-button [1-12] Thumb Grid in two modes: Basic [123] and Advanced [Num]. To change between the Basic [123] and Advanced [Num] mode, simply use the switch at the bottom of your Razer Naga Epic.

Basic [123] Configuration



In Basic [123] mode, the 12-button thumb grid works the same as a keyboard's numerical keys. These buttons allow you to replicate the action bar of most games onto the thumb grid buttons.

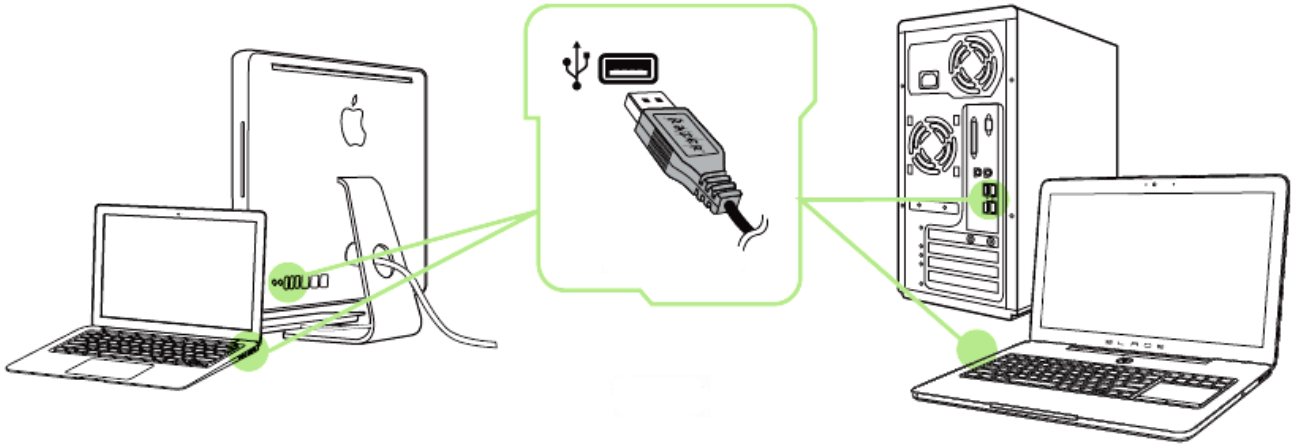
Advanced [NUM] Configuration



In the Advanced [Num] mode, the 12-button thumb grid works the same as a keypad's numerical keys. These buttons allow you to have quicker access to in-game commands without having the need to reach for the keypad.

Note: Depending on your configuration, using the shift key or num lock key in-game may affect the functionality of the thumb grid buttons (for example: numpad 4 may become left arrow).

5. INSTALLING YOUR RAZER NAGA EPIC



Note: You may skip Steps 2-4 if you already have a Razer Synapse 2.0 installed and an existing account.

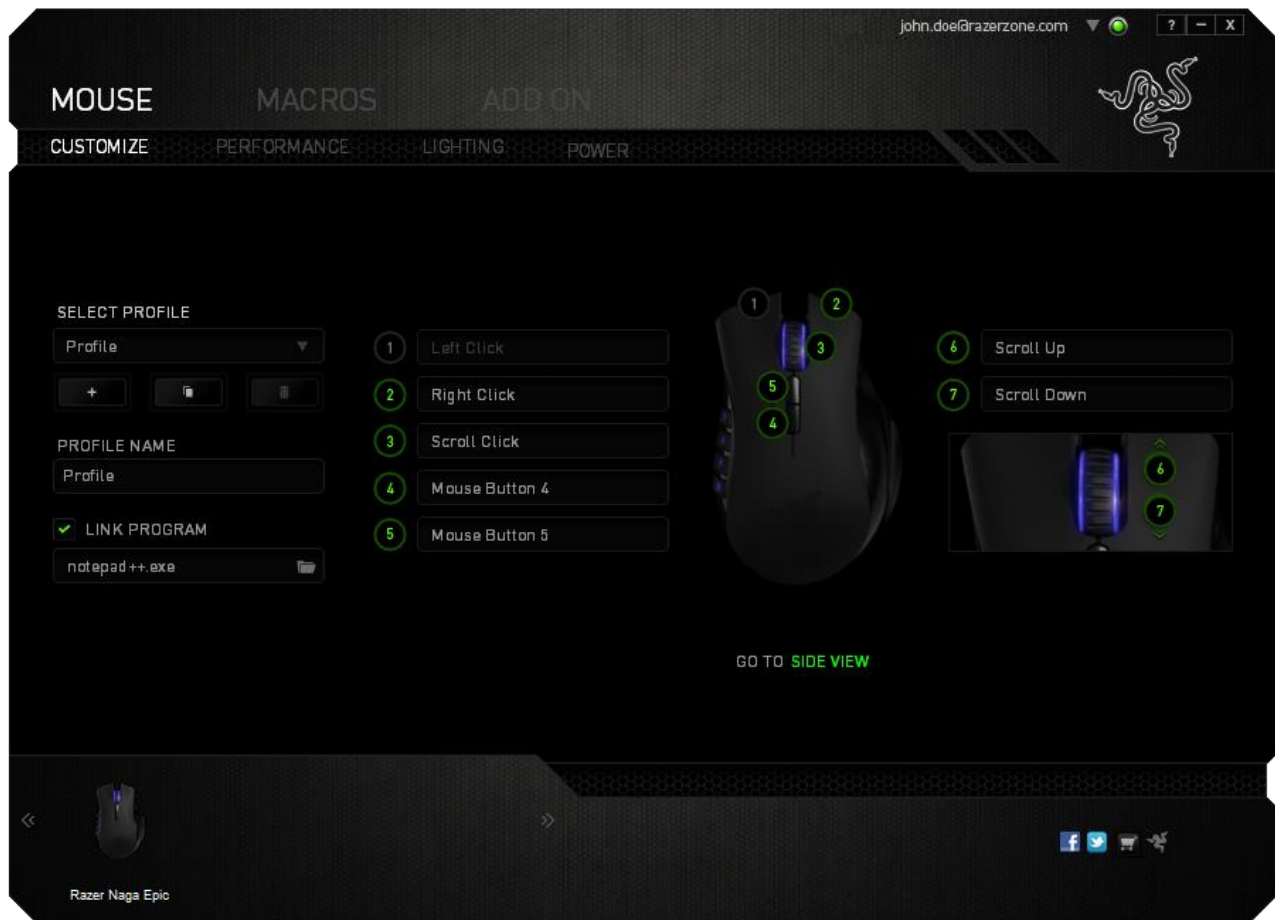
- Step 1: Plug the Razer Naga Epic into the USB port of your computer.
- Step 2: Download the Razer Synapse 2.0 installer from www.razersupport.com.
- Step 3: Run the installer and follow the onscreen instructions.
- Step 4: Register for a Razer Synapse 2.0 account and confirm your new account.
- Step 5: Open Razer Synapse 2.0 and login to your account.
- Step 6: Wait until the software automatically downloads and installs.

6. CONFIGURING YOUR RAZER NAGA EPIC

Disclaimer: The features listed here require you to log in to Razer Synapse 2.0. These features are also subject to change based on the current software version and your Operating System.

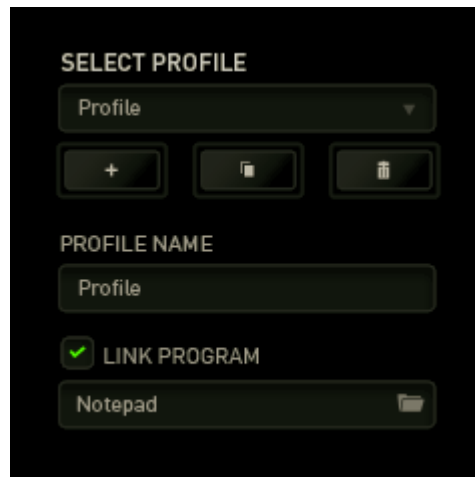
MOUSE TAB

The Mouse Tab is your default tab when you first install Razer Synapse 2.0. This tab allows you to customize your device's profiles, button assignments, performance and lighting.







PROFILE

A Profile is a convenient way of saving all of the changes you have made on your device. A single Profile can store numerous settings such as button assignments and sensitivity adjustments.



Profile contains the default settings of your device. Any changes made within each tab will automatically be saved into the current profile. If you want to rename this profile, you may do so by typing on the field below *PROFILE NAME*.

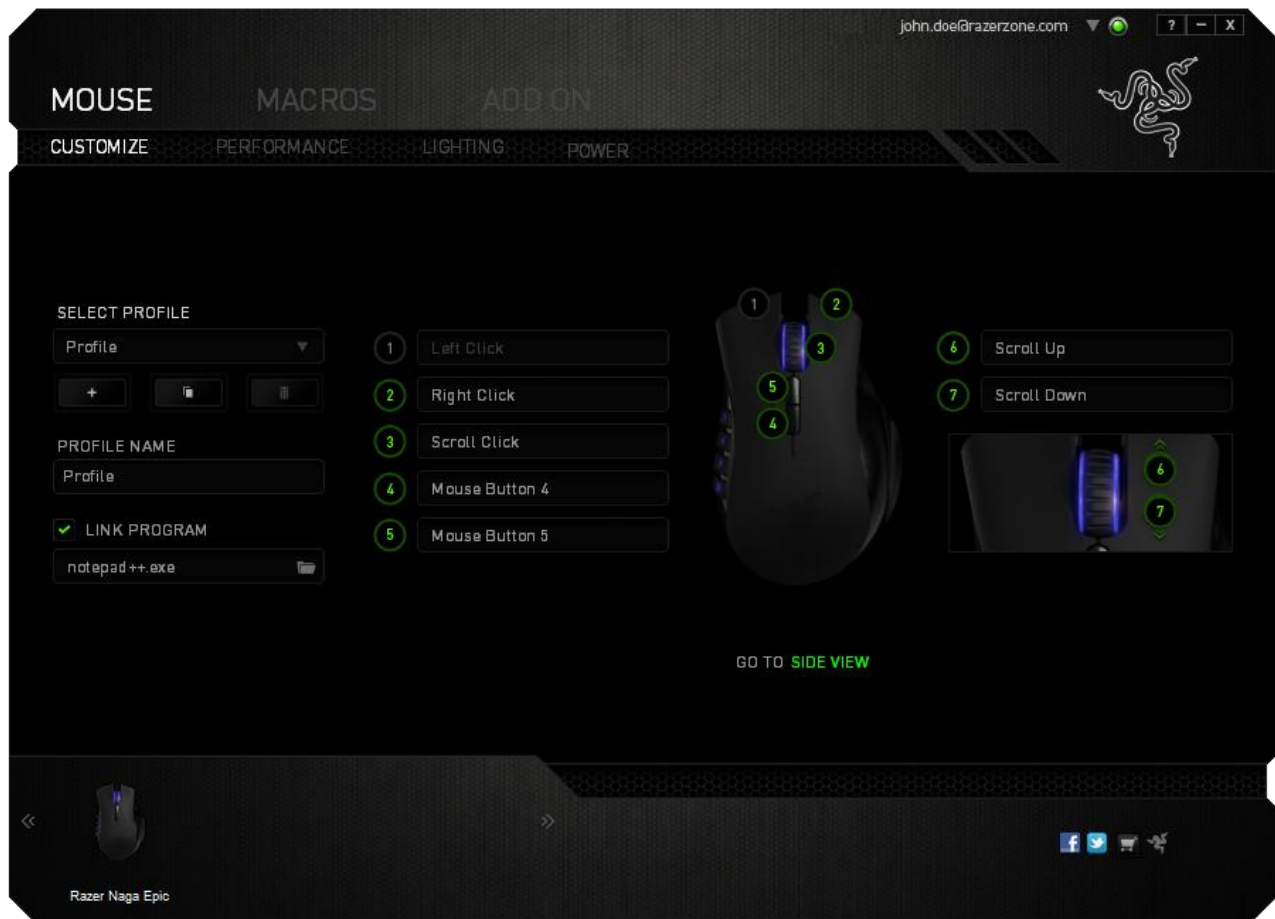
There are other options available in the profile section such as creating a new profile by clicking the  button, deleting the current profile by clicking the  button and duplicating the current profile by clicking the  button. You can even set a profile to work with a specific program or application by using the *LINK PROGRAM* option and clicking the  button to search for it.

CUSTOMIZE TAB

The Customize Tab is where you can modify the basic functionalities of your device such as button assignments to suit your gaming needs. The changes made in this tab are automatically saved to your current profile.

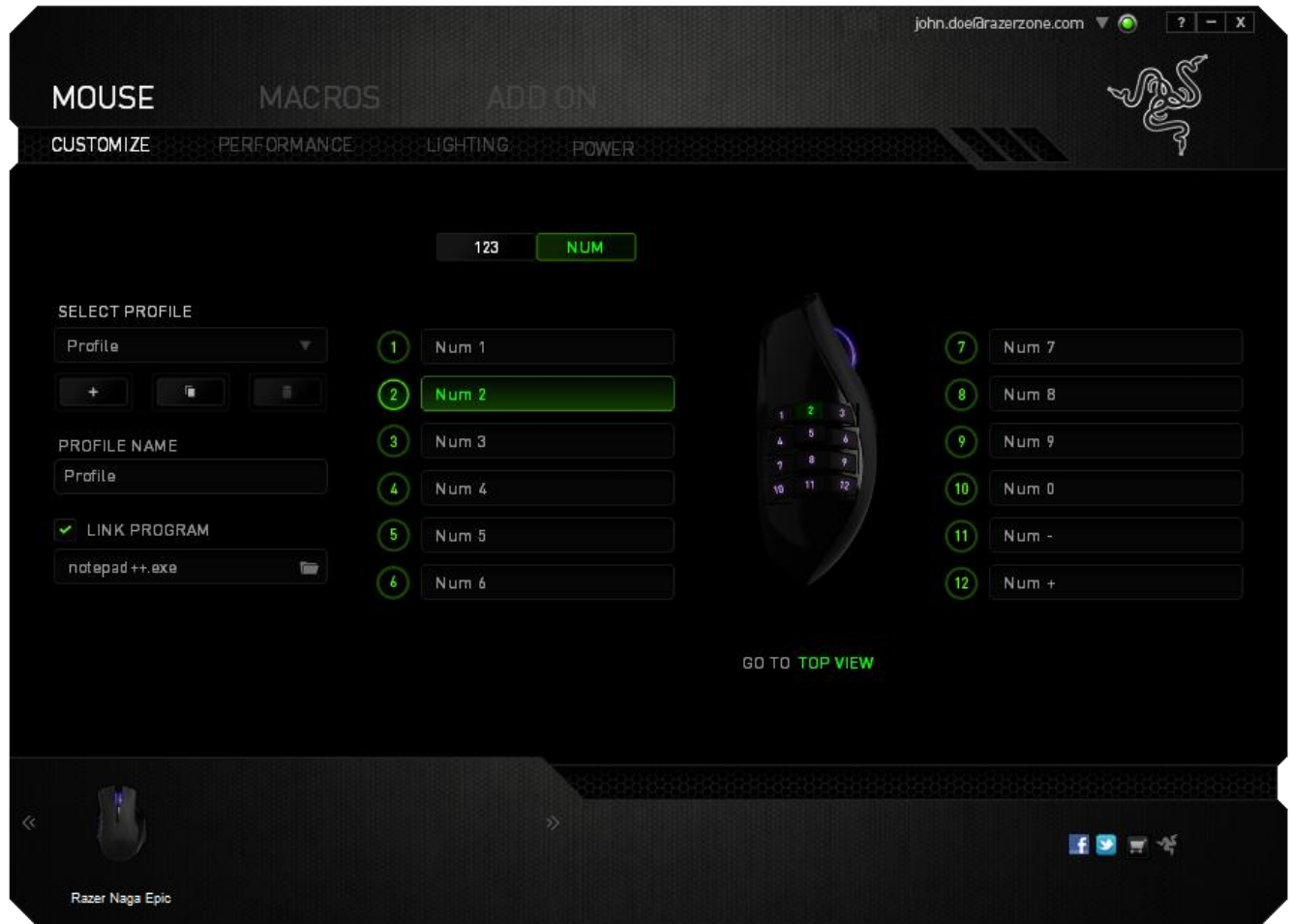
Top View

The Top View is where you can customize the 5 basic mouse buttons and the mouse wheel.



Side View

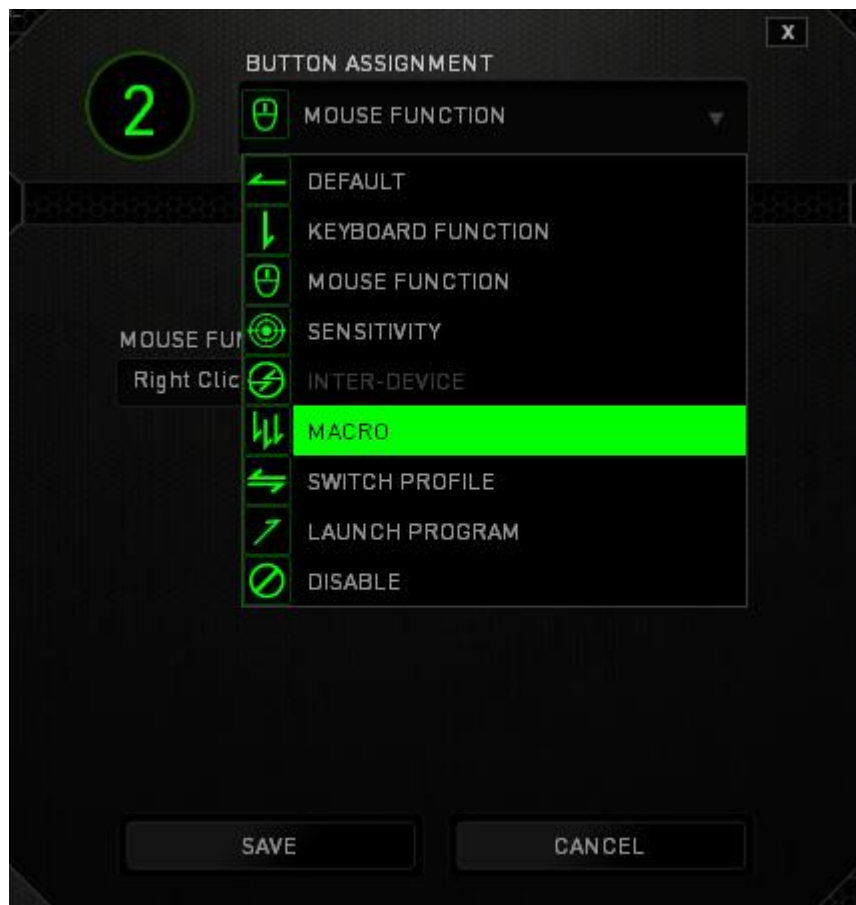
The Side View is where you can customize the 12-button thumb grid.



You may configure both the Basic [123] and the Advanced [NUM] modes using the toggle located on the middle of the screen. Configuring the thumb grid buttons on any mode does not require you to use the switch underneath the Razer Naga Epic. However, you will still need to use the switch to change between the Basic [123] and the Advanced [NUM] configuration.

BUTTON ASSIGNMENT MENU

Initially, each of the mouse buttons is set to *DEFAULT*. However, you may change the function of these buttons by clicking the desired button to access the Button Assignment Menu.



Listed below are the customization options and their description.



Default

This option enables you to return the key to its original function. To choose the *DEFAULT*, simply select it from the Button Assignment Menu.



Keyboard Function

This option enables you to change the mouse buttons into keyboard functions. To choose a keyboard function, select *KEYBOARD FUNCTION* from the Button Assignment Menu and enter the key you wish to use on the given field below. You may also include modifier keys such as *Ctrl*, *Shift*, *Alt* or any of those combinations.



Mouse Function

This option allows you to change the mouse buttons into other mouse functions. To choose a mouse function, select *MOUSE FUNCTION* from the Button Assignment Menu and an *ASSIGN BUTTON* submenu will appear.

Listed below are the functions which you can choose from the Assign Button submenu:

- Left Click - Performs a left mouse click using the assigned button.
- Right Click - Performs a right mouse click using the assigned button.
- Scroll Click - Activates the universal scrolling function.
- Double Click - Performs a double left click using the assigned button.
- Mouse Button 4 - Performs a “Backward” command for most internet browsers.
- Mouse Button 5 - Performs a “Forward” command for most internet browsers.
- Scroll Up - Performs a “Scroll Up” command using the assigned button.
- Scroll Down - Performs a “Scroll Down” command using the assigned button.



Sensitivity

Sensitivity refers to how fast the mouse pointer can travel across the screen. When you select the Sensitivity function from the dropdown menu, a sub-menu will appear which gives you access to the following options:

- Sensitivity Stage Up - Increase the current sensitivity by one stage. See the **PERFORMANCE TAB** to learn more about sensitivity stages.
- Sensitivity Stage Down - Decrease the current sensitivity by one stage. See the **PERFORMANCE TAB** to learn more about sensitivity stages.
- Sensitivity Clutch - Change to a predefined sensitivity as long as the designated button is pressed. Releasing the button will return it to the previous sensitivity.
- On-The-Fly Sensitivity - Readily adjust the current sensitivity using the assigned button. If On-The-Fly Sensitivity has been set, pressing the designated button and moving the scroll wheel will produce a bar on your screen which would indicate your current sensitivity level.



Macro

A Macro is a pre-recorded sequence of keystrokes and button presses that is executed with precise timing. By assigning a Macro to a button, you can execute complex combinations with ease. The *ASSIGN MACRO* allows you to choose which recorded Macro to use while the *PLAYBACK OPTION* enables you to choose the behavior of the Macro. See the **MACROS TAB** to learn more about creating Macro commands.




Switch Profile

The Switch Profile enables you to change profiles on the fly and immediately load all your pre-configured settings. When you select Switch Profile from the Button Assignment Menu, a sub-menu will appear that will allow you to choose which profile to use. An on-screen display will automatically appear whenever you switch profiles.



Launch Program

The Launch Program allows you to run a program or application using the assigned button. When you select Launch Program from the dropdown menu, a  button will appear which allows you to search for the specific program or application you want to use.



Disable

This option renders the assigned button unusable. Use Disable when you have no need for a button or if a particular button interferes with your gaming.

PERFORMANCE TAB

The Performance Tab allows you to enhance the speed and precision of your mouse pointer. Similar to the Customize Tab, the changes made here are automatically saved to your current profile.



Listed below are the performance options and their descriptions.

Sensitivity

Sensitivity pertains to how much effort is needed to move the mouse pointer in any direction. The higher the sensitivity, the more responsive the mouse will be. (Recommended setting: 1600 – 1800)

Enable X-Y Sensitivity

By default, the X-axis (horizontal) and Y-axis (vertical) use the same sensitivity values. However, you may set different sensitivity values to each of the axes by selecting the “**Enable X-Y Sensitivity**” option.

Configure Sensitivity Stages

A sensitivity stage is a preset sensitivity value. You can create up to 5 different sensitivity stages which you can cycle through using the sensitivity stage up/down buttons.

Acceleration

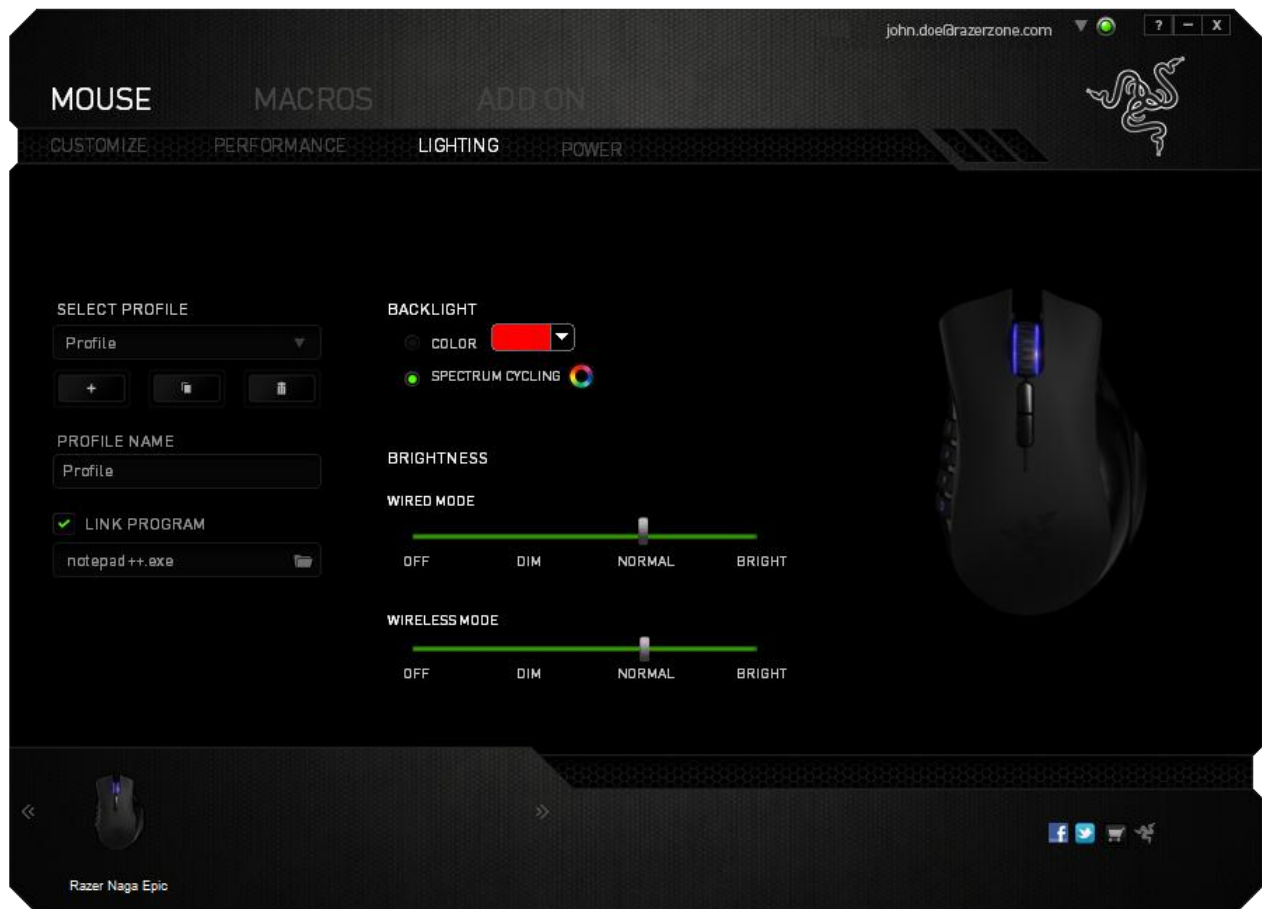
Acceleration increases the cursor’s movement speed depending on how quickly you move the mouse. The higher the value, the faster the mouse accelerates. (Recommended settings: Windows 0, Mac 5)

Polling Rate

The higher the polling rate, the more often the computer receives information about the status of your mouse, thus increasing the mouse pointer’s reaction time. You can switch between 125Hz (8ms), 500Hz (2ms) and 1000Hz (1ms) by selecting your desired polling rate on the dropdown menu. (Recommended setting: 500Hz – 1000Hz)

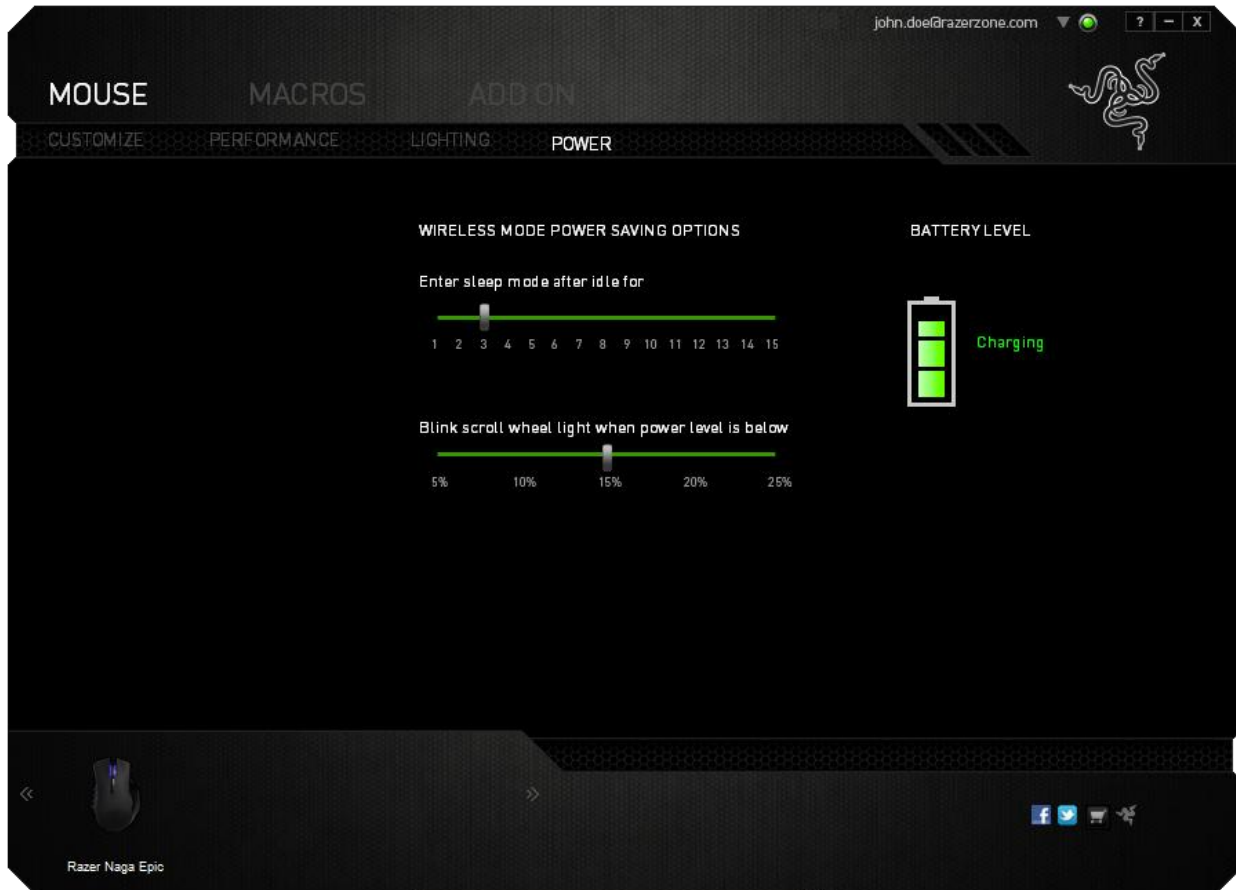
LIGHTING TAB

The Lighting Tab allows you to customize the look of your gaming mouse by choosing from over 16 million colors for the backlight or you may select the *SPECTRUM CYCLING* option to allow the colors to change indefinitely. This tab also allows you to adjust the intensity of the backlight by using the *BRIGHTNESS* slider.



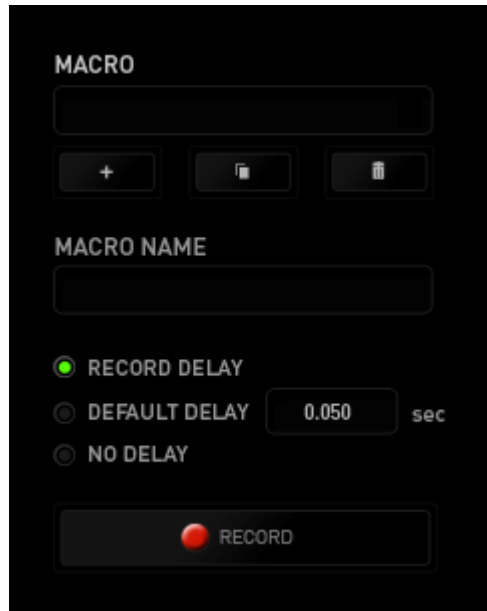
POWER TAB




The Power Tab allows you to manage your device's energy consumption when running on batteries. You can set your device to enter sleep mode when it has been idle for a certain amount of time. The Power Tab also allows you to be notified when the device's power is at a certain level.





MACROS TAB

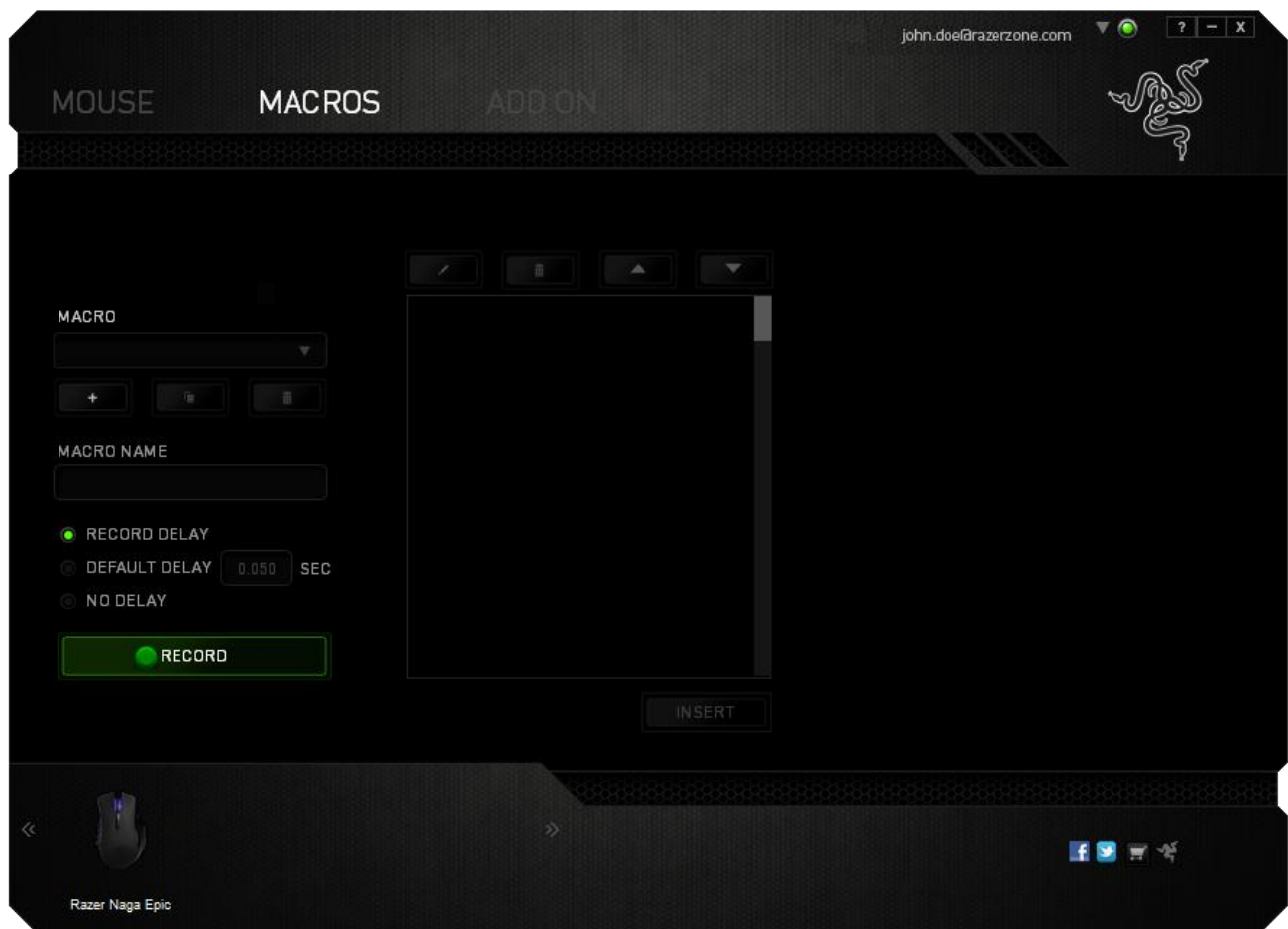
The Macros Tab allows you to create a series of precise keystrokes and button presses. This tab also allows you to have numerous macros and extremely long macro commands at your disposal.



The Macro section works similarly to Profile wherein you can rename a macro by typing on the field below *MACRO NAME*. There are also other options available in the macro section such as creating a new macro by clicking the  button, deleting the current macro by clicking the  button or duplicating the current macro by clicking the  button.

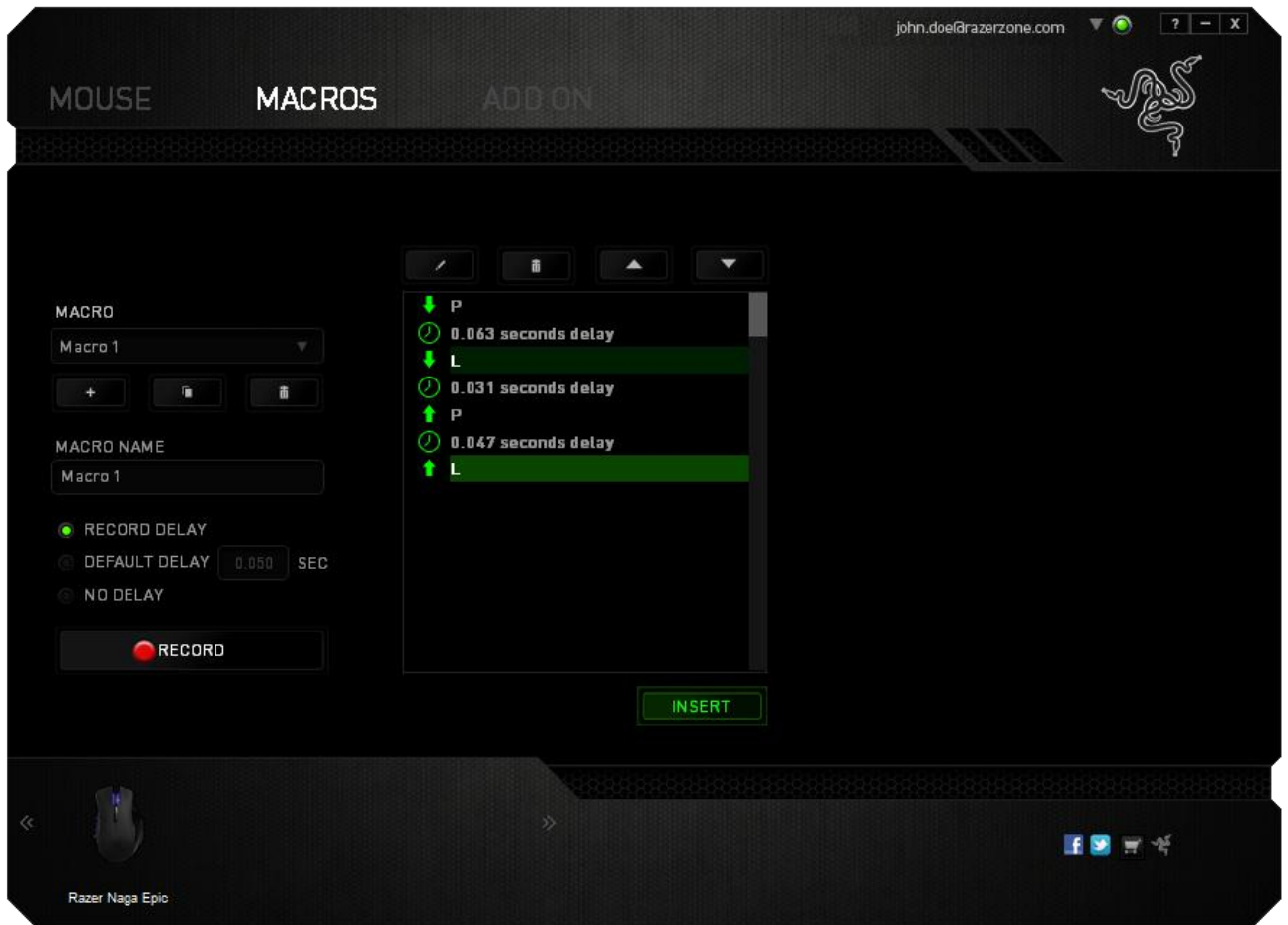
To create a macro command, simply click the  button and all your keystrokes and button presses will automatically register on the macro screen. When you are done recording your macro commands, click on the  button to end the session.





The Macro section allows you to input the delay in-between commands. In *RECORD DELAY* the delay in-between commands are registered as how it is entered. The *DEFAULT DELAY* uses a predefined time (expressed in seconds) as the delay. And *NO DELAY* omits all the pauses in-between keystrokes and button presses.




Note: You may use up to three decimal places when inserting values on the seconds (sec) field.

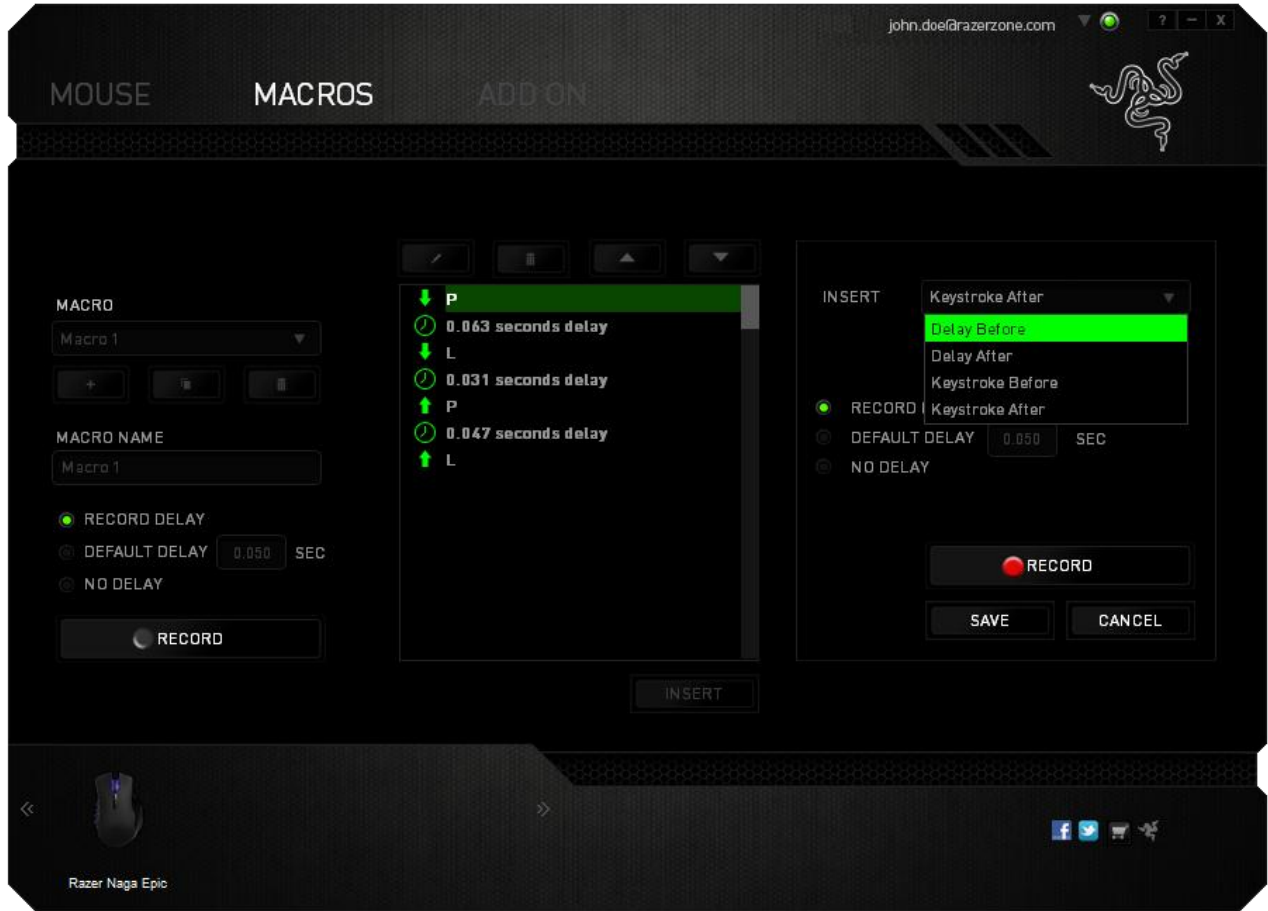
Once you have recorded a macro, you may edit the commands you have entered by selecting each command on the macro screen. Each keystroke or button press is arranged sequentially with the first command shown at the top of the screen.

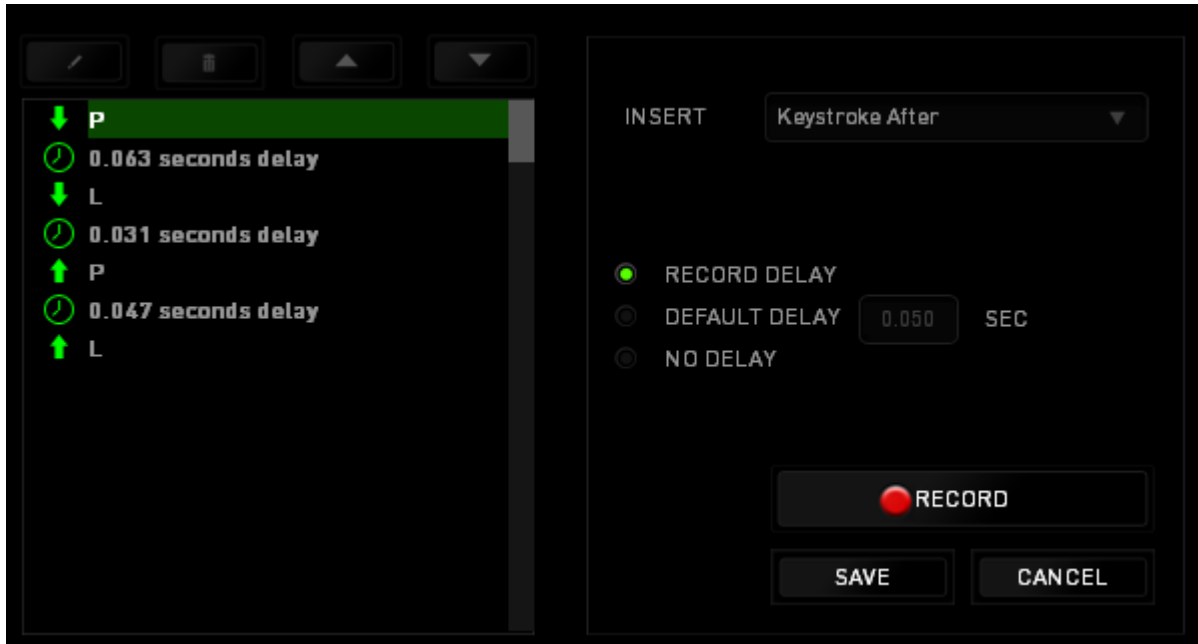


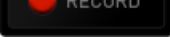
The  button allows you to edit a particular command and the  button enables you to delete a command. The  and  buttons gives you the option to move the command up or down.

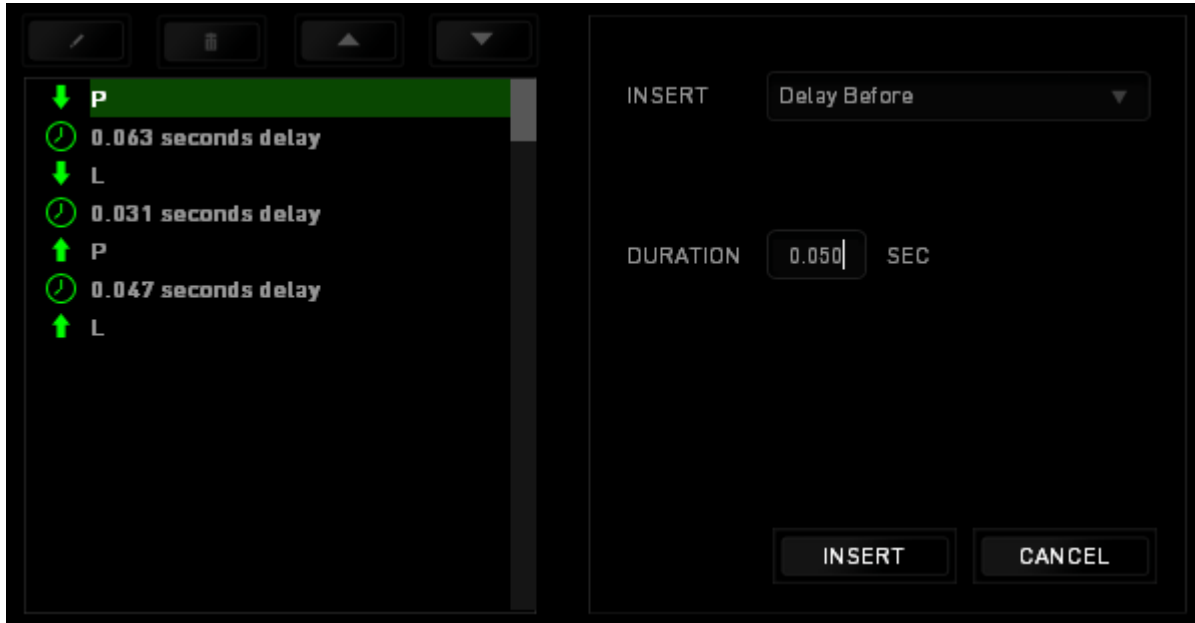
The  button allows you to put in additional keystrokes, button presses or time delays either before or after the selected command.

Once you have pressed the Insert button, a new display window will appear beside the list of macro commands. The dropdown menu on this window allows you to choose a keystroke or a delay to be added in before or after the highlighted macro command.



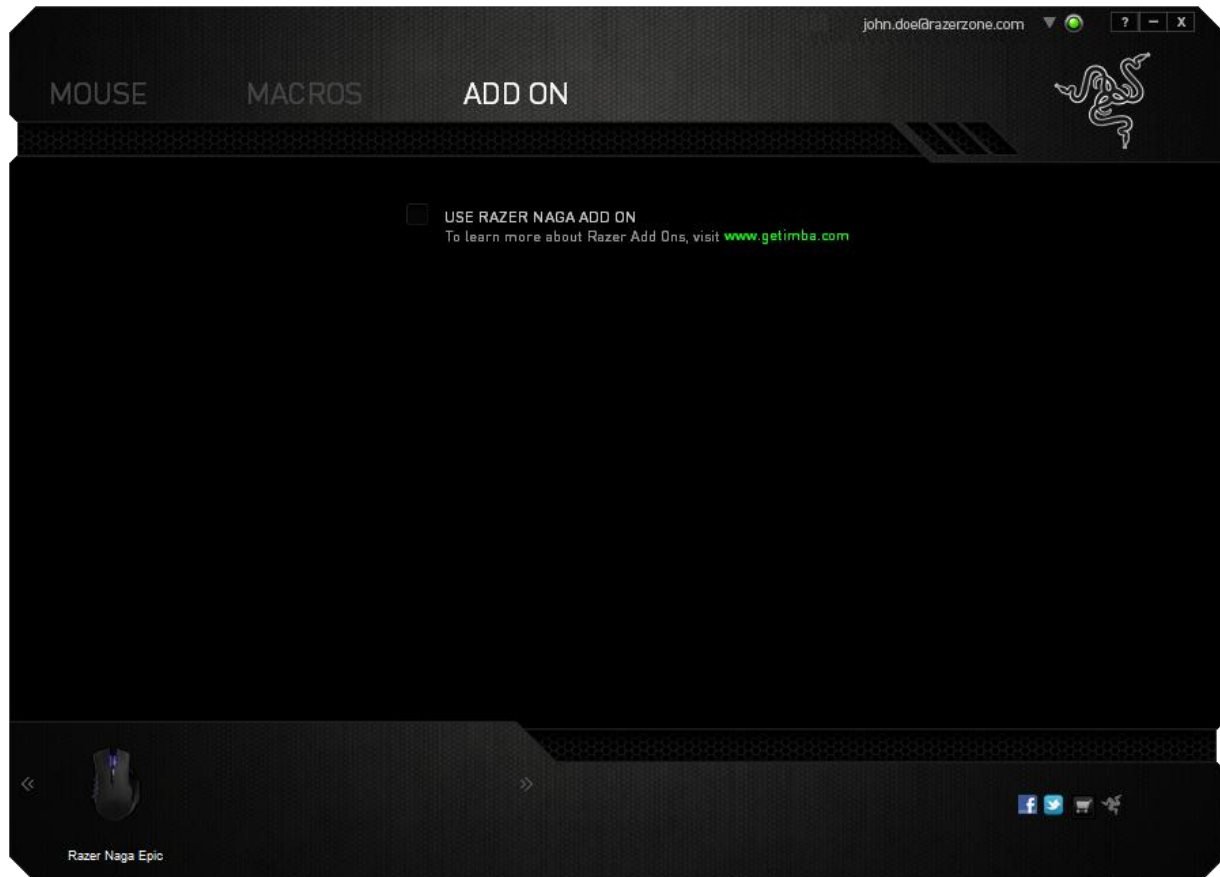


You may add in a new set of macro commands by clicking the  button on the keystroke menu; or input time delays on the duration field using the delay menu.




ADD ON TAB

The Add On Tab expands your device's usability by adding game-specific settings such as a custom interface. To start using Razer Add Ons first you must enable the *USE RAZER NAGA ADD ON* option.

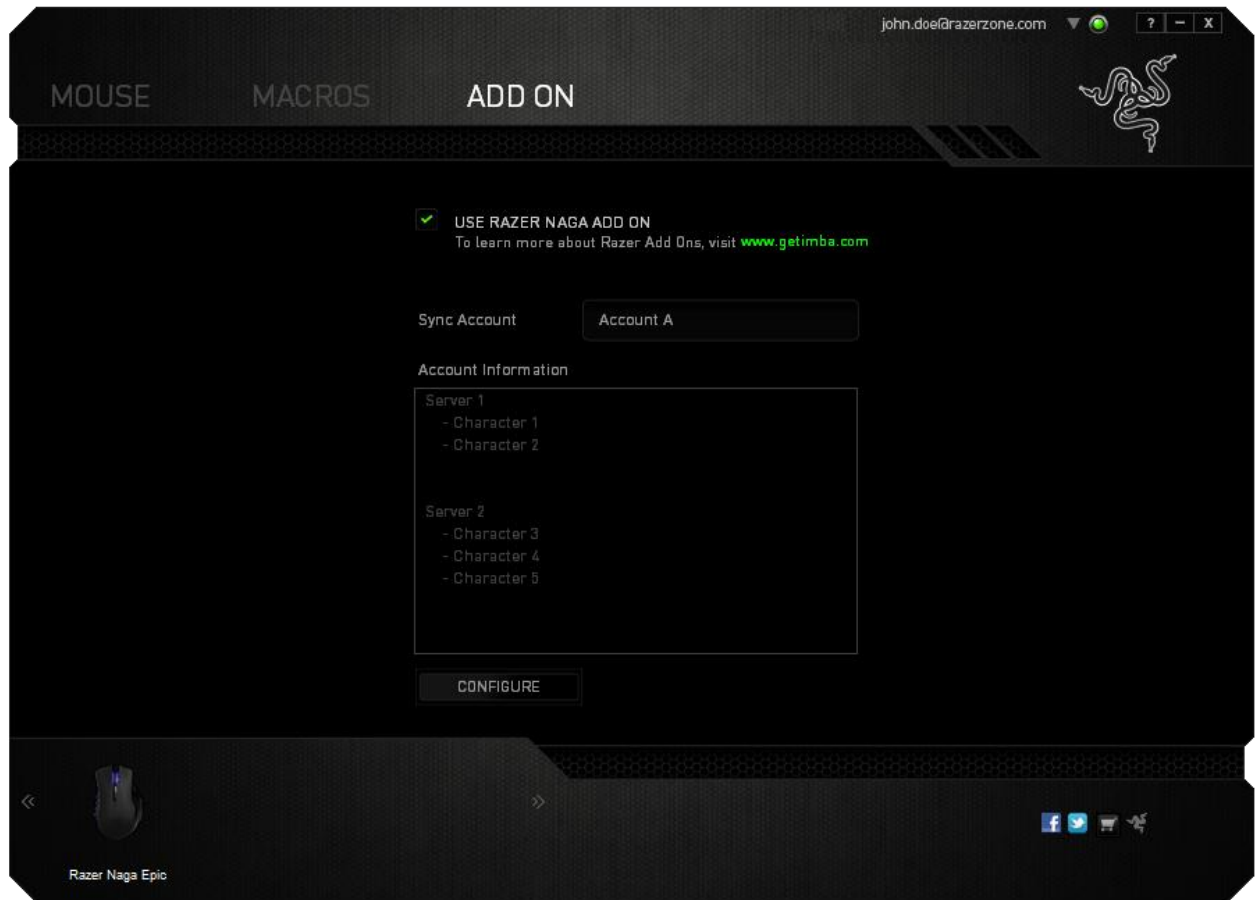


Note: To learn more about Razer Add Ons, visit www.getimba.com

Next, search for the game program or game application using the  button. Finally, select your user account for the game by choosing it on the dropdown menu beside *Sync Account*.



The Account Information screen will show you all the relevant information regarding your user account.



7. SAFETY AND MAINTENANCE

SAFETY GUIDELINES

In order to achieve maximum safety while using your Razer Naga Epic, we suggest that you adopt the following guidelines:

1. Avoid looking directly at the tracking beam of your mouse or pointing the beam in anyone else's eye. Note that the tracking beam is NOT visible to the naked human eye and is set on an Always-On mode.
2. Should you have trouble operating the device properly and troubleshooting does not work, unplug the device and contact the Razer hotline or go to www.razersupport.com for support. Do not attempt to service or fix the device yourself at any time.
3. Do not take apart the device (doing so will void your warranty) and do not attempt to operate it under abnormal current loads.
4. Keep the device away from liquid, humidity or moisture. Operate the device only within the specific temperature range of 0°C (32°F) to 40°C (104°F). Should the temperature exceed this range, unplug and switch off the device in order to let the temperature stabilize to an optimal level.

COMFORT

Research has shown that long periods of repetitive motion, improper positioning of your computer peripherals, incorrect body position, and poor habits may be associated with physical discomfort and injury to nerves, tendons, and muscles. Below are some guidelines to avoid injury and ensure optimum comfort while using your Razer Naga Epic.

1. Position your keyboard and monitor directly in front of you with your mouse next to it. Place your elbows next to your side, not too far away and your mouse within easy reach.

2. Adjust the height of your chair and table so that the keyboard and mouse are at or below elbow height.
3. Keep your feet well supported, posture straight and your shoulders relaxed.
4. During gameplay, relax your wrist and keep it straight. If you do the same tasks with your hands repeatedly, try not to bend, extend or twist your hands for long periods.
5. Do not rest your wrists on hard surfaces for long periods. Use a wrist rest to support your wrist while gaming.
6. Customize the buttons on your mouse to suit your style of gaming in order to minimize repetitive or awkward motions while gaming.
7. Make sure that your mouse fits comfortably in your hands.
8. Do not sit in the same position all day. Get up, step away from your desk and do exercises to stretch your arms, shoulders, neck and legs.
9. If you should experience any physical discomfort while using your mouse, such as pain, numbness, or tingling in your hands, wrists, elbows, shoulders, neck or back, please consult a qualified medical doctor immediately.

MAINTENANCE AND USE

The Razer Naga Epic requires minimum maintenance to keep it in optimum condition. Once a month we recommend you unplug the device from the USB port and clean it using a soft cloth or cotton swab with a bit of warm water to prevent dirt buildup. Do not use soap or harsh cleaning agents.

To get the ultimate experience in movement and control, we highly recommend a premium mousing surface from Razer. Some surfaces will cause undue wear on the feet requiring constant care and eventual replacement.

Do note that the sensor of the Razer Naga Epic is 'tuned' or optimized especially for the Razer mousing surfaces. This means that the sensor has been tested extensively to confirm that the Razer Naga Epic reads and tracks best on Razer mousing surfaces.

8. LEGALESE

COPYRIGHT AND INTELLECTUAL PROPERTY INFORMATION

©2011 Razer USA Ltd. Patent Pending. All Rights Reserved. Razer™, the Razer Triple-Headed Snake logo, the Razer distressed word logo and other trademarks contained herein are trademarks or registered trademarks of Razer USA Ltd and/or its affiliated or associated companies, registered in the United States and/or other countries. Windows and the Windows logo are trademarks of the Microsoft group of companies. Mac OS, Mac and the Mac logo are trademarks or registered trademarks of Apple.

Razer USA Ltd (“Razer”) may have copyright, trademarks, trade secrets, patents, patent applications, or other intellectual property rights (whether registered or unregistered) concerning the product in this Master Guide. Furnishing of this Master Guide does not give you a license to any such copyright, trademark, patent or other intellectual property right. The Razer Naga Epic (the “Product”) may differ from pictures whether on packaging or otherwise. Razer assumes no responsibility for such differences or for any errors that may appear. Information contained herein is subject to change without notice.

LIMITED PRODUCT WARRANTY

For the latest and current terms of the Limited Product Warranty, please visit www.razerzone.com/warranty.

LIMITATION OF LIABILITY

Razer shall in no event be liable for any lost profits, loss of information or data, special, incidental, indirect, punitive or consequential or incidental damages, arising in any way out of distribution of, sale of, resale of, use of, or inability to use the Product. In no event shall Razer’s liability exceed the retail purchase price of the Product.

COSTS OF PROCUREMENT

For the avoidance of doubt, in no event will Razer be liable for any costs of procurement unless it has been advised of the possibility of such damages, and in no case shall Razer be liable for any costs of procurement liability exceeding the retail purchase price of the Product.

GENERAL

These terms shall be governed by and construed under the laws of the jurisdiction in which the Product was purchased. If any term herein is held to be invalid or unenforceable, then such term (in so far as it is invalid or unenforceable) shall be given no effect and deemed to be excluded without invalidating any of the remaining terms. Razer reserves the right to amend any term at any time without notice.