

RCA

RCRN04GR

Universal Remote Control Owner's Manual

Manual del Propietario (parte posterior)

SAVE THIS MANUAL AND THE CODE LISTS!

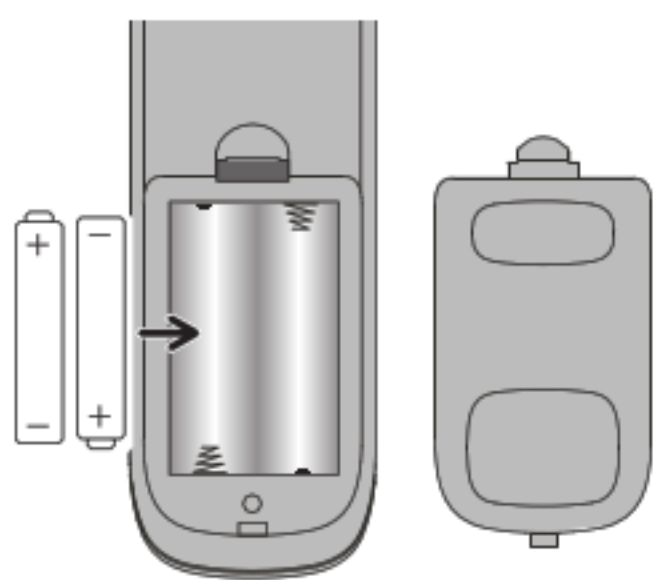
Remote controls can sometimes lose their programming when you change the batteries. Make sure you keep the manual and code lists in a safe place so that you can reprogram the remote if you need to.

Tip: This remote is already programmed to operate most RCA-branded TVs, DVD players, and satellite receivers. Just press the corresponding key—DVD•VCR for a DVD player, TV for a television, SAT•CBL•DTC for a satellite receiver.

Step 1: Install your batteries

Your universal remote requires two AAA alkaline batteries (not included).

To install the batteries:



1. Remove the battery compartment cover.
2. Insert the batteries, matching the batteries to the (+) and (-) marks inside the battery compartment.
3. Push the battery cover back into place.

Battery Precautions:

- Do not mix old and new batteries.
- Do not mix alkaline, standard (carbon-zinc) or rechargeable (nickel-cadmium) batteries.
- Always remove old, weak or worn-out batteries promptly and recycle or dispose of them in accordance with Local and National Regulations.

Battery Saver

Your universal remote control saves battery power by automatically turning off if any key is pressed for more than 60 seconds. This saves your battery life should your remote get stuck in a place where the keys remain depressed, such as between sofa cushions.

Step 2: Program your remote

To use this universal remote with your home entertainment system, first you need to program it to control your devices. There are four ways you can program the universal remote to operate your devices:

- The **Auto Code Search** goes automatically through all the codes for the device you're trying to control. It's the easiest method, but it can sometimes take longer than some of the other programming methods.
- The **Brand Code Search** searches through the codes for select brands of devices. It's not as easy as the auto code search, but it can be faster.
- The **Direct Code Entry** lets you enter a code from the accompanying code list for your brand of device. It's not as easy as the other methods, but it's potentially the fastest method.
- The **Manual Code Search** lets you manually go through all the codes for the device you're trying to control.

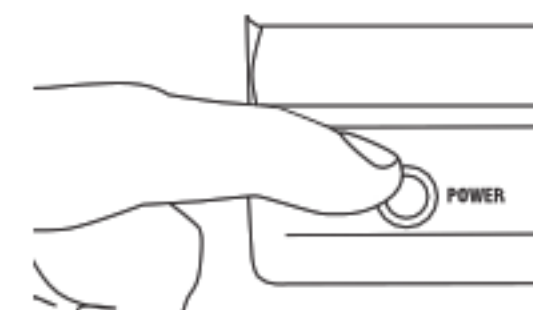
Auto Code Search

The Auto Code Search goes automatically through all the codes for the device you're trying to control. When you find the one that operates your device, you can stop the search and store that code.

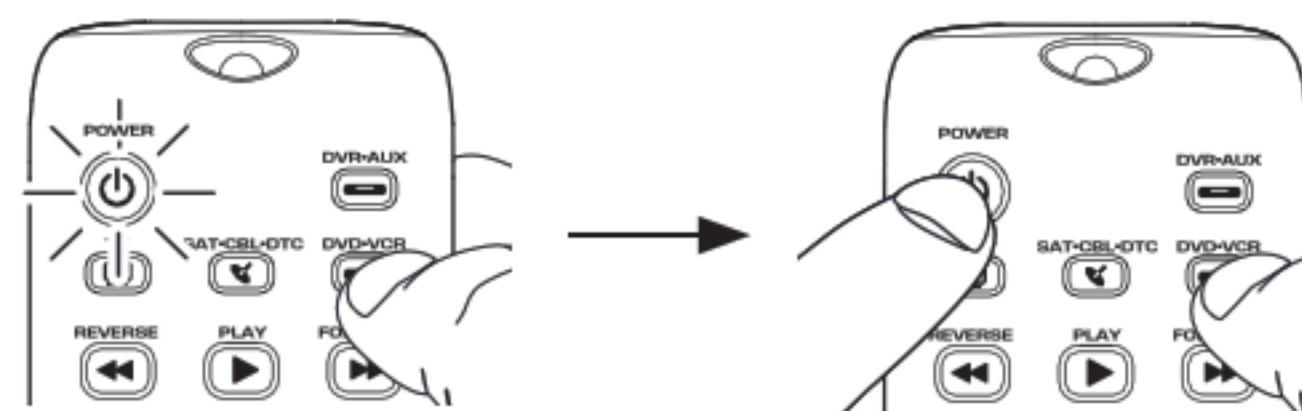
TIPS: Each device key is associated with a type of device—the TV is preset to search for TVs, SAT•CBL•DTC for satellite receivers, cable boxes or digital TV converters, DVD•VCR for DVD players, and DVR•AUX for DVRs. To program a device key for a different type of device, see the Changing a Key's Device Type section.

To exit without saving a new code at any point in the Auto Code Search, press the EXIT key.

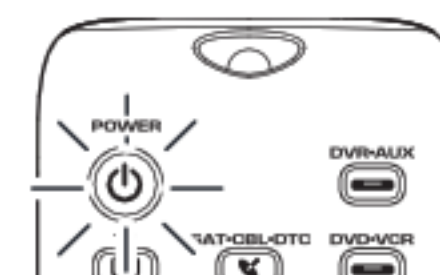
1. Manually turn on the device you want to control.
2. Press and hold the device key you want to program. The POWER key illuminates.



While you're holding down the device key, use your other hand to press and hold the remote's POWER key at the same time. The POWER key turns off.



3. Wait until the POWER key comes on and stays on. Then release both keys.



4. Point the remote directly at the front panel of the device you want to control. Press PLAY on the remote and wait 5 seconds. The remote is testing a batch of 10 codes on your device.



Did your device turn off?

YES: Go to step 5.

NO: Press PLAY again. The remote tests 10 codes.

Keep pressing PLAY every 5 seconds until the device turns off.

5. When your device turns off, press the REVERSE key on the remote and wait at least 2 seconds. The remote tries the last of the previous ten codes.

Did your device turn on?

YES: Press the STOP key. You're done! You've programmed this device key.

NO: Press REVERSE again. The remote tests the next code in the batch.

Keep pressing REVERSE every 2 seconds until the device turns back on. When it does, press STOP.

Note: If you accidentally press the REVERSE key and the device turns on, press the FORWARD key every 2 seconds to see if your device turns off.

NOTES

Throughout the programming of each device key, the remote is pointed at the IR sensor of the device you are currently programming the remote to control.

Test the remote with the device to make sure the device key is programmed with the correct code for maximum functionality. If some features don't work, try a different code. See the "Testing the Code for Maximum Functionality" section below for more information.

During the Auto Code Search, the remote will blink the device key presses that aren't part of the search.

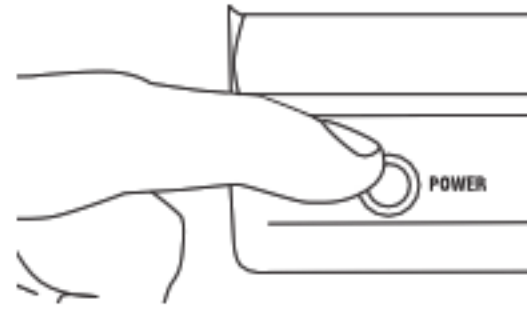
The search times out after two minutes. The remote will blink four times and turn off, and the device key code under that device key is retained.

The POWER key blinks four times and the remote has gone through all the codes in the batch. If your device hasn't turned on, try a different search method.

Testing the Code for Maximum Functionality

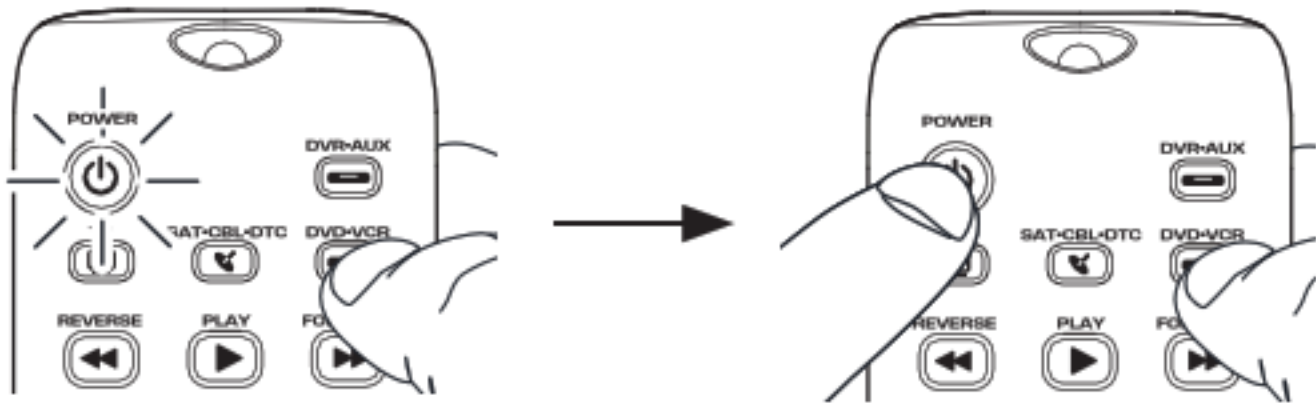
1. Try a variety of the device's functions. If some device features don't work, go to step 2 and try a different code.
2. Repeat the Auto Code Search Method. When your device turns off, do not press PLAY. Instead, with the unit now off, continue to press PLAY every 5 seconds until the unit turns off.
3. Once the unit turns back on, press the device key every 2 seconds until your device turns off again, press PLAY.
4. Test the key's functionality again by pressing a variety of the device's functions. If the majority of the programmed controls work, the programming is complete. If the code does not provide maximum functionality, try another code.

1. Manually turn on the device you want to control.

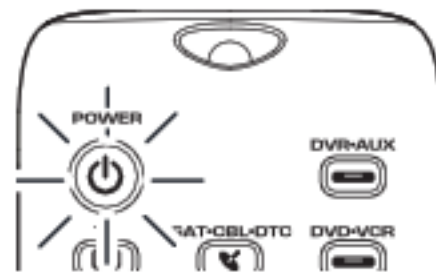


2. Press and hold the device key you want to program. The POWER key illuminates.

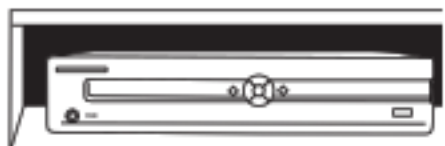
While you're holding down the device key, use your other hand to press and hold the remote's POWER key at the same time. The POWER key turns off.



3. Wait until the remote's POWER key comes on and stays on. Then release both keys.



4. Point the remote directly at the front panel of the device you want to control. Press POWER on the remote and wait 2 seconds. The remote is testing a single code for your device.



Did your device turn off?

YES: Press the STOP key to store the code. You're done! You've programmed this device key.

NO: Press POWER again. The remote tests the next code for your device.

Keep pressing POWER every 2 seconds until your device turns off. When it does, press STOP.

TIP: Because there are so many codes, you may have to press the POWER key many times—possibly hundreds of times.

NOTES

Throughout the programming of each key, keep the remote pointed at the IR sensor of the device you are programming the remote to control.

Test the remote with the device to make sure the device key is programmed with the correct code for maximum functionality. If some features don't work, try a different code. See the "Testing the Code for Maximum Functionality" section below for more information.

During the Manual Code Search, the remote ignores keypresses that aren't part of the search.

The search times out after two minutes (the POWER key blinks four times and turns off, and the last programmed code under that device key is retained).

The POWER key blinks four times and turns off when the remote has gone through all the codes. The remote exits the Brand Code Search. If your device hasn't turned off yet, try a different search method.

Testing the Code for Maximum Functionality

1. Try a variety of the device's functions with the remote. If some features of your devices don't work, go to the next step to try a different code.
2. Repeat the Manual Code Search and Entry Method from the beginning. When the device turns off for the first time, don't press the STOP key, which would store the same code. Instead, with the unit now off, continue to press the POWER key repeatedly until the unit turns back on.
3. Once the unit turns back on, you have found another code that operates the device. Press the STOP key.
4. Test the key's functionality again by trying a variety of functions. If the code controls the majority of the device's functions, programming is complete. If the code stored does not give maximum functionality, try another code.

Tour of the Remote

In most cases, the keys on this remote perform the same functions as the keys on your original remotes once you've programmed this remote to operate your components. Many keys on this remote have other functions as well.

Illuminated **POWER** key serves as an indicator light to provide feedback.

Device keys (**TV**, **SAT-CBL-DTC**, **DVD-VCR**, **DVR-AUX**) put the remote in the right mode to control your device.

GUIDE and **MENU** put the remote in menu/guide mode; they also access the same features as the keys on your original remotes.

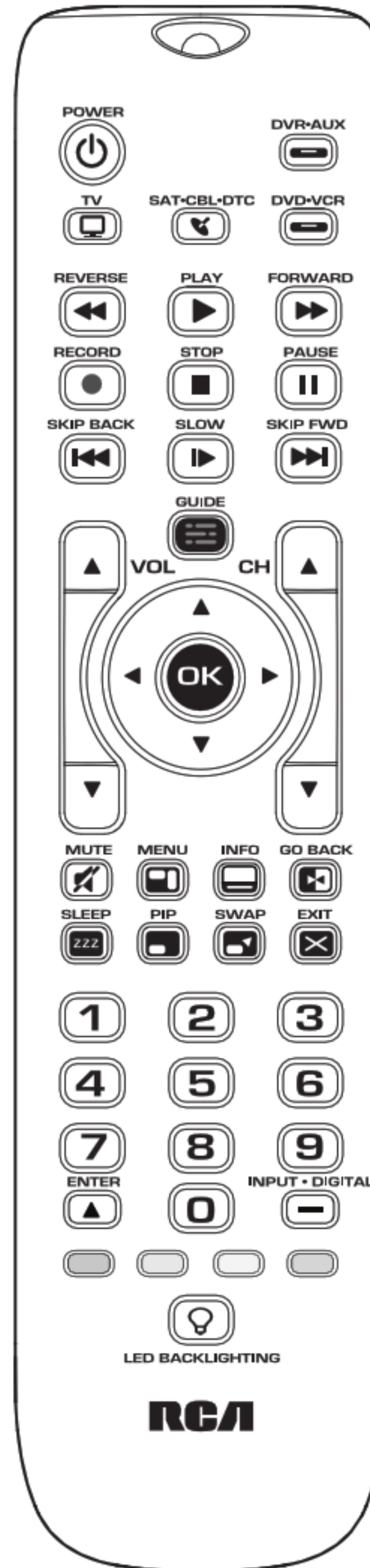
EXIT exits remote programming; it also performs the same functions as on your original remotes.

Arrow keys act as navigation keys in device guides and menu systems.

The **INPUT-DIGITAL** and **— (dash)** key has three functions: (1) it toggles through all the video sources connected to your TV; (2) when the remote is in VCR mode, this button toggles between VCR and the TV input; (3) when you're entering digital channel numbers directly, this button lets you separate the main channel number from the sub-channel number (such as 59.1).

Red, green, yellow, and blue keys access additional features on your cable box, satellite receiver, or Blu-ray disc player (see your device manual for details).

Backlight key (lightbulb icon) turns backlighting on/off.



Actual model may vary from illustration

Advanced Functions

Changing A Key's Device Type

Each device key is associated with a type of device preset to search for TVs, SAT-CBL-DTC for satellite cable boxes or digital TV converters, DVD-VCR for VCRs, and DVR-AUX for DVRs. To program these different kind of device, you have to reassign the

Reassigning the DVD-VCR Key to Control

The DVD-VCR key defaults to control a DVD player. To reassign the DVD-VCR key to control a VCR, you must re

1. Press and hold the DVD-VCR key. The POWER key illuminates. Keep holding down the DVD-VCR key.
2. While holding down the DVD-VCR key, press the number 2 key on the keypad. The POWER key turns off.
3. Release the DVD-VCR key. The POWER key illuminates and then turns off. The DVD-VCR key is now programmed to control a VCR.
4. Follow the directions in the auto, brand, direct, or manual code search to program the DVD-VCR key for your device.

Reassigning the DVR-AUX Key To Control Devices

The DVR-AUX key defaults to control a DVR. If you want to reassign the DVR-AUX key to control a different device (an additional DVD, satellite or cable box, for example), you must re

1. Press and hold the DVR-AUX key. The POWER key illuminates.
2. While holding down the DVR-AUX key, press the number key on the keypad for the device you want to control (see the chart below). The POWER key turns off.

DVR-AUX KEY CONTROLS:

Additional TV	pre
VCR or DVR	pre
Additional DVD	pre
Additional satellite, cable box or digital TV converter	pre

3. Release the DVR-AUX key. The POWER key illuminates and then turns off. The DVR-AUX key is now programmed to control the device type you selected.
4. Follow the directions in the auto, brand, direct, or manual code search to program the DVR-AUX key for your device.

Volume Punch-Through

Volume punch-through allows the VOL and MUTE keys to be pressed in SAT-CBL-DTC, DVD-VCR, or DVR-AUX mode to "punch through" to TV. Volume punch-through occurs automatically and allows you to control the volume without exiting the current mode. (If the DVR-AUX key is programmed with a TV code, volume can punch through to this device as well.)

Note: Volume punch-through does not occur if the component code has its own volume/mute key, as some satellite receivers.

Transport Key Punch-Through

Transport key punch-through allows the transport keys (PLAY, FORWARD, RECORD, STOP, PAUSE, SKIP BACK, and SKIP FWD), when pressed in TV or SAT-CBL-DTC mode, to "punch through" to DVD-VCR or DVR-AUX mode. Transport key punch-through occurs automatically and allows you to use the transport keys without exiting the current mode. For example, if the transport keys are programmed to DVD mode and accessed again after pressing the DVD key, punch through to the DVD.

Note: Transport key punch-through does not occur if the device code has its own transport keys, as a satellite receiver with a built-in DVR.

IMPORTANT

Because this remote controls more than one device, you must first "tell" the remote which device you wish to operate. That means, if you wish to operate your TV, you must first press the TV key to put the remote in the TV Mode. The remote stays in that device mode until you press a different device key. For example, if your remote is in TV Mode and you want to operate the DVD player, you must press the DVD-VCR key to change device modes.