

Connecting a monitor / TV

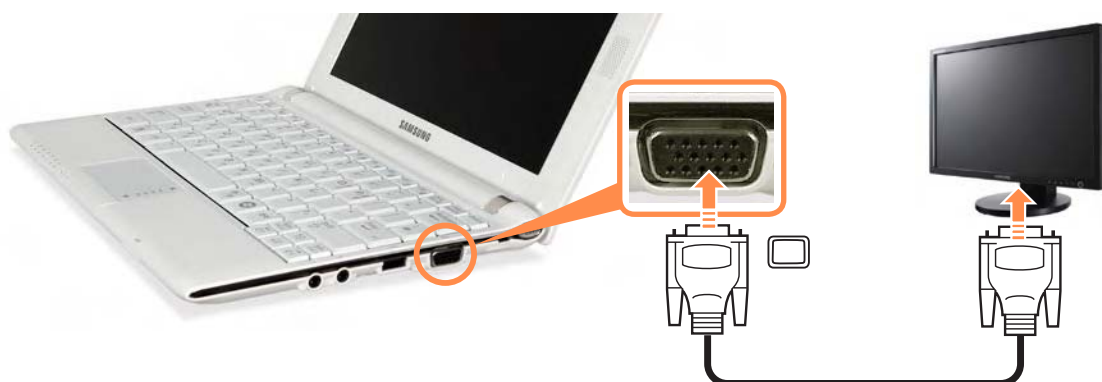
Using an external display device is useful when you are giving a presentation or watching a video or movie through your monitor.



You have to buy a connection cable additionally.

Connecting to the Monitor / TV

Connect the computer to the RGB port of the monitor or TV using a monitor cable (15-pin).




Viewing Through a Monitor / TV

You can switch the display device using the shortcut key.

Switching the Display Device using the Shortcut Key

Press the **Fn** +  key combination once. Then the **Easy Display Manager** screen appears in which you can select a display device.

Whenever you press the  key while holding down the **Fn** key, the selected option is changed.



Example) Selecting LCD+CRT Dual View



- **LCD:** Notebook Screen
- **CRT:** External Monitor Screen
- **LCD+CRT Clone :** Notebook+ External Monitor Screen
- **LCD+CRT DualView:** Notebook+ External Monitor Screen in Dual View

● What is Dual View?

Dual View is a function that enables you to view a computer screen over two display devices. It is convenient when you need a wide screen.



External Monitor / TV is not supported in the DOS Command Prompt window.

Using Dual View to View Extended Screen

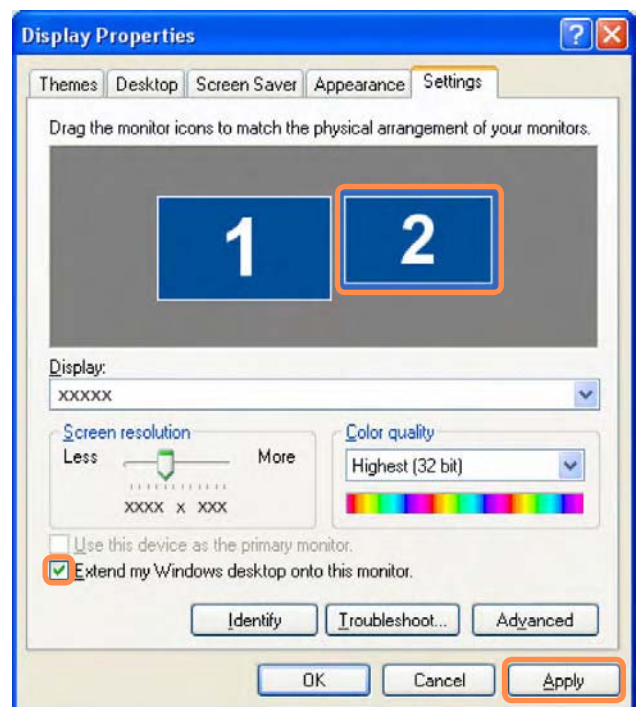
Dual View is a function that enables you to view a computer screen over two display devices. This is convenient when needing a wide screen for work.

In Dual View mode, you can select the screen resolution and color quality for each display device, as if there were two separate graphics cards.

1 Connect the external display device (e.g. a monitor or a projector) to the corresponding port of the system. To connect a TV, connect the TV to the TV output port of the system.

2 Press touchpad right button on the desktop, click **Properties**, and then click the **Settings** tab.

3 Click the monitor **2** icon, select the **Extend my Windows desktop onto this monitor** check box, and then click **Apply**.



4 When the configuration is complete, click **Identify** on the left side of Troubleshoot. The primary display device (the LCD) is indicated as **1**, and the secondary display device is indicated as **2**. Now you can view the screen through two monitors.



1 : Primary



2 : Secondary

Deactivating Dual View Mode

Click the monitor **2** icon, clear the **Extend my Windows desktop onto this monitor** check box, and then click **Apply**.



To move a window between display devices in Dual View mode

Click the title bar of the window in the primary display device (1, the LCD), and drag it to the secondary display device (2). The window is moved to the secondary display device.




- When you use Dual View, configuring the LCD as the 'Primary' monitor is recommended.
- If the screen of the secondary display device is displayed at 1024x768 pixels, with 32bit colors, change the settings to the desired screen resolution and color quality in the [Display Properties] dialog box.

Adjusting the Volume


You can adjust the volume using the keyboard and the volume control program.

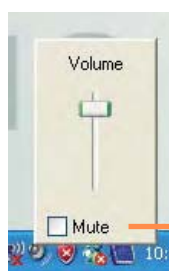
Adjusting the Volume using the Keyboard

Press the **Fn** +  key combination or **Fn** +  key combination to adjust the volume.


Press the **Fn** +  key combination to turn the volume on or off.

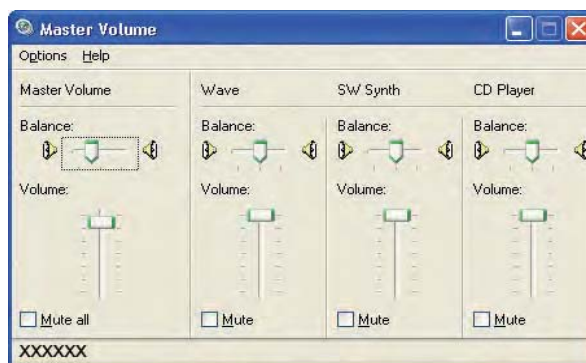
Adjusting the Volume using the Volume Adjustment Program

Click the **Volume** icon  on the taskbar and slide the volume control bar to adjust the volume.



Mute

For advanced volume control options, double-click the **Volume** icon , and adjust the volume level in the volume control program.



When you turn the system on, a booting noise may occur.

Using SRS

The SRS function enables you to experience more stereophonic sound by expanding the space-perception through the stereo speaker.



This function is available for specific models only.

1 Click **Start > Control Panel > Sound, Speech and Audio Devices > SRS Control Panel**.

2 Check the **Enable** checkbox and select a mode. Then you can listen to sound through the selected **SRS** effect.



- **WOW XT (Music):** Select to listen to music.
- **TruSurround XT (Movie/Video):** Select to watch a movie.

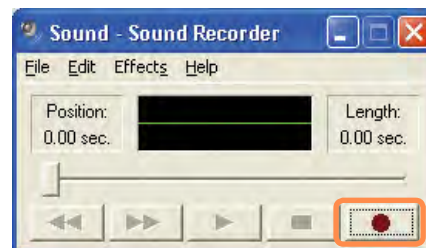
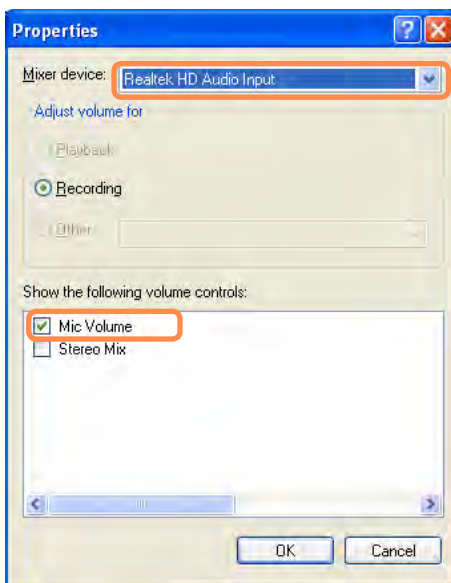


- The SRS function is only supported for a computer's built-in speakers or headphones.
- It is recommended unchecking the SRS option before recording, and checking it before play. It is to prevent sound distortion because of double application of SRS effect when user plays the file recorded by using stereo mix.

Using Recorders

This section describes how to perform recording on a computer by using Windows Recorder.

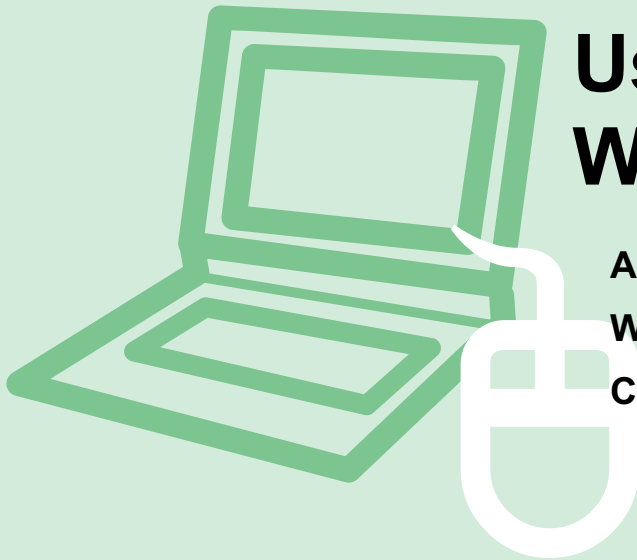
- 1 Connect a microphone to the microphone jack.
you can also use the internal MIC.
- 2 Click **Start > Control Panel > Sounds, Speech, and Audio Devices > Sounds and Audio Devices**.
- 3 Click **Advanced** from Volume and then, click **Options > Properties**.
- 4 Select **Realtek HD Audio input** from the mixer device to select **Recording** from **Adjust Volume for**.
- 5 Select **Mic Volume** from **Show the following volume controls** and click **OK**.
- 6 When **Recording Control** window appears, check the **Select** checkbox. Increase the **recording** volume to increase the recording sensitivity and close the window.
- 7 Click **Start > All Programs > Accessories > Entertainment > Sound Recorder**.
- 8 Click the **Record** button to perform recording.



The default recording duration of Windows is 60 seconds. Download a dedicated recording program from the Internet to record audio data for a long time.

Chapter 3.

Using Microsoft Windows XP



About Microsoft Windows XP	79
Windows XP Screen Layout	81
Control Panel	85

The screen shots used in this chapter may differ from actual screens depending on the Windows XP version and model.

About Microsoft Windows XP

Microsoft Windows XP (hereinafter referred to as Windows) is the basic operating system for computers.

You should know how to use Windows in order to use your computer properly. Use **Tour Windows XP** as well as **Help and Support** to learn about how to use Windows.

Tour Windows XP

Tour Windows XP introduces the basic features and characteristics of Windows.

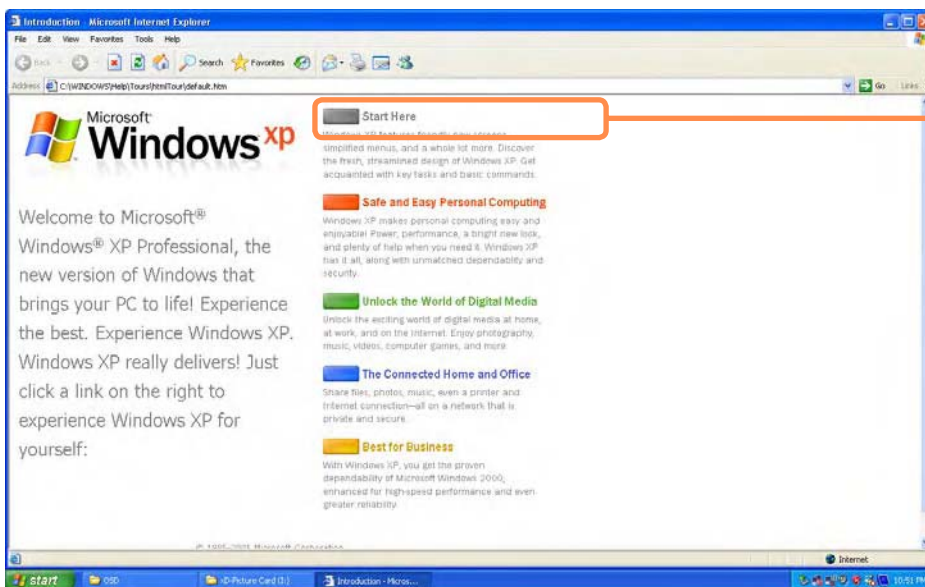
Click **Start > Tour Windows XP**.

Or, click **Start > All Programs > Accessories > Tour Windows XP**.

Click the title at the right to view the description of the Windows features.



The screen layout may differ depending on the computer model and the operating system.



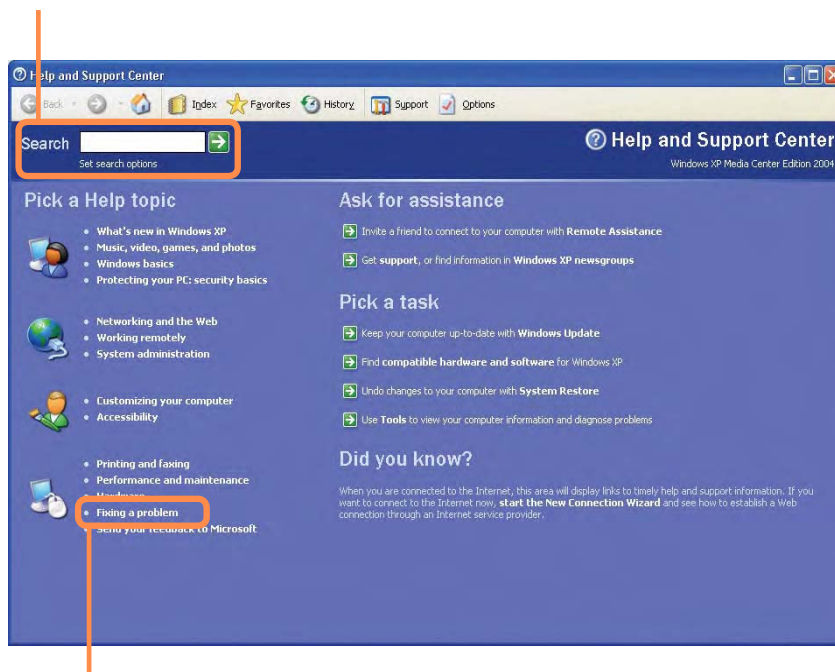
Click the title.

Help and Support


Help and Support allows you to view the features and usage of Windows. Also, it allows you to search the information you want by entering a search keyword.

Click **Start > Help and Support**.

Search: Enter a search keyword to view the Help.




Fixing a problem: If a problem occurs, you can get help.

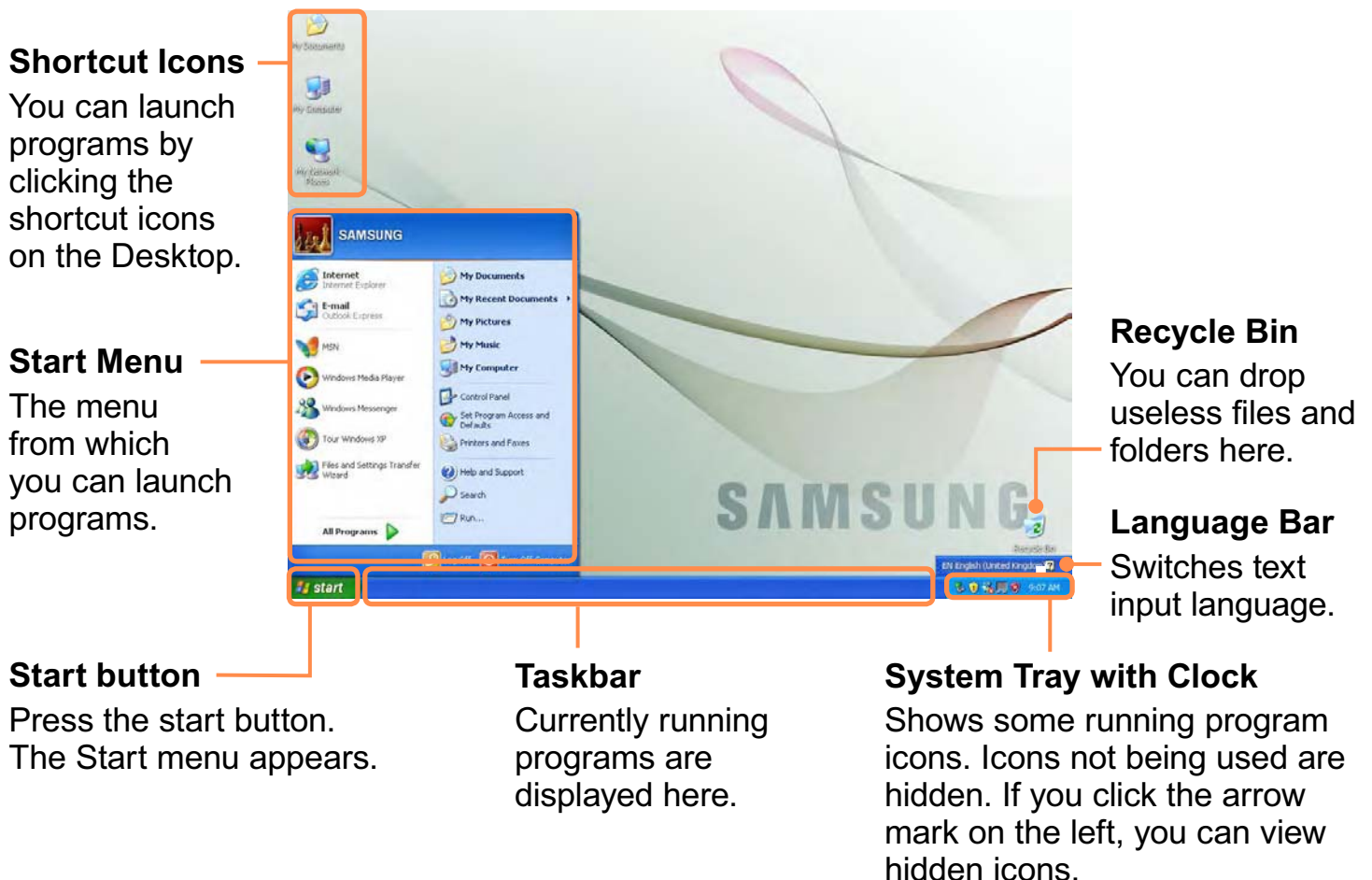
 **How to Change Desktop (Background Picture)**
What's new in Windows XP > Windows XP articles : Walkthrough ways to use your PC. After clicking **Walkthrough : Personalize your PC**, you can view the way to change the background picture on **Customize Desktop**.

Windows XP Screen Layout

Desktop

If you turn on the computer, the Desktop will appear. The Desktop is the work space (screen) of a computer and is configured as follows:

 The screen layout may differ depending on the computer model and the operating system.








Start Menu

The menu from which you can launch programs.

Click **Start**. The Start menu appears.

Alternatively, press the **Windows** key  on the keyboard.



My Computer		Displays the contents of the hard disk, the CD-ROM drive, the network drive(s), and floppy disks. It can also be used to search and open files and folders.
Control Panel		Enables users to configure settings on the computer.
Help and Support		Provides on-line help, information on Windows and troubleshooting.
Search		Enables users to search for information in files or the Internet.
Run		Run programs or documents.

Window

A window is a basic foundation for operating your computer. For instance, a window of your computer is configured as follows:

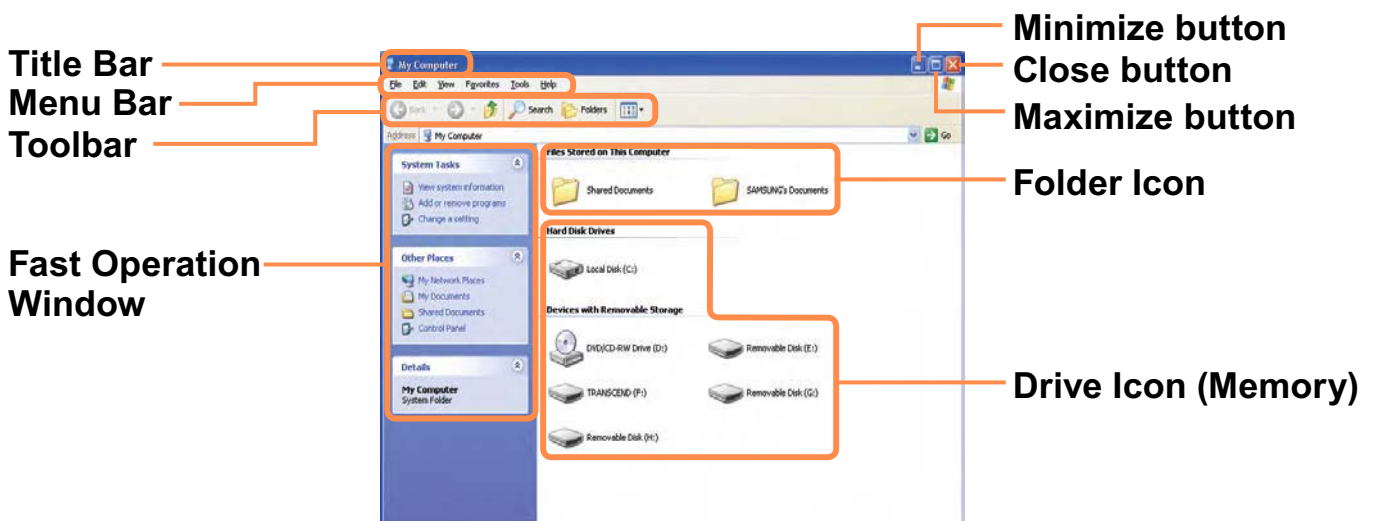
Click **Start > My Computer**.



Displayed menus and names may be varied.

Double-click the **Local Disk**, which is a hard disk drive, to view the folders and files saved in your computer.

If any folder or file is not shown, click **Show Folder Contents**.





What is a Drive?

A drive is a storage device that can read or write data such as folders and files.

What is a Folder?

A folder is just like a cabinet that keeps files or folders. You can keep files or folders of similar kinds in a folder.

What is a File?

A file is the minimum unit of materials created by using a program and is also called data.

How to View the Entire Drive Structure

Click the folder icon from the Toolbar to view the drive structure.

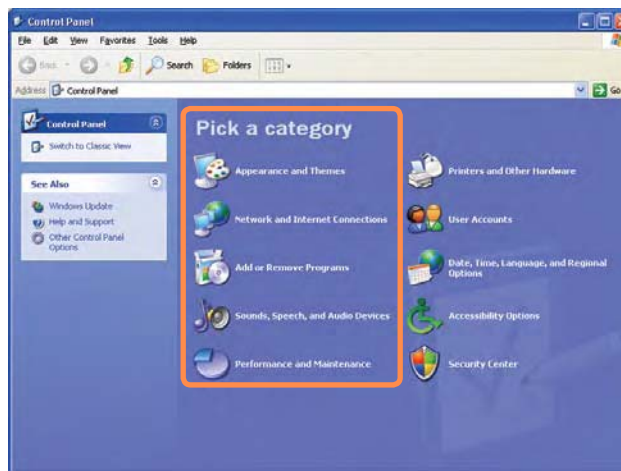
Click the icon again to return to the Fast Operation window.






Control Panel

The Control Panel has a group of tools that enable the user to configure the Windows-related settings.

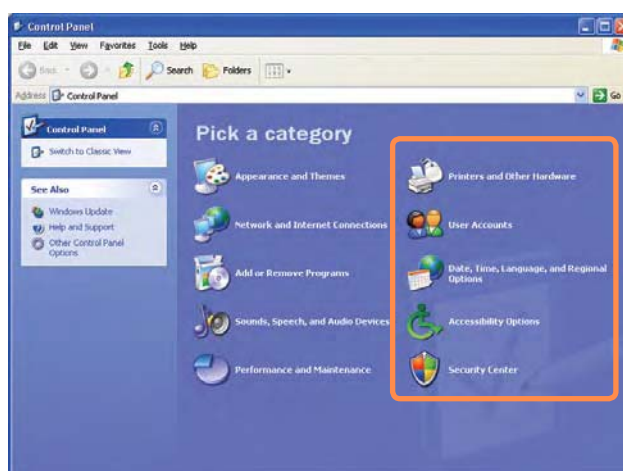
Running Control Panel






Click **Start > Control Panel**.



Appearance and Themes		Change the appearance of desktop items, apply a theme or screen saver to your computer, or customize the Start menu and Taskbar.
Network and Internet Connections		Connect to the Internet, create a home or small office network, configure network settings to work from home, or change modem, phone, and Internet settings.
Add or Remove Programs		Install or remove programs and Windows components.
Sounds, Speech, and Audio Devices		Change the entire sound scheme or individual sounds made by your computer, or configures the settings for your speakers and recording devices.
Performance and Maintenance		Schedule regular maintenance checks, increase space on your hard disk, or configure energy-saving settings.

Click **Start > Control Panel**.



Printers and Other Hardware		Change the settings for your printer, keyboard, mouse, camera, and other hardware.
User Accounts		Change user account settings, passwords, and pictures.
Date, Time, Language, and Regional Options		Change the date, time, and time zone for your computer, the language to use, and the way numbers, currencies, dates, and times are displayed.
Accessibility Options		Adjust your computer settings for vision, hearing, and mobility.
Security Center		View your current security status and access important settings to help protect your PC.

User Account

Windows XP allows to set multiple users with accounts.

This section describes how to add a user account and to switch a it.

How to Add a User Account

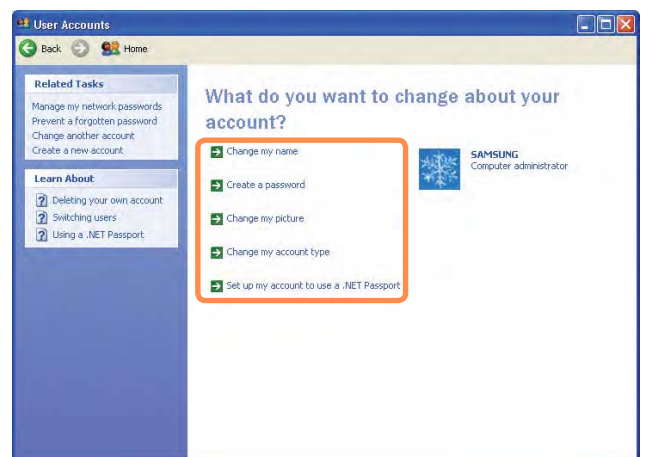
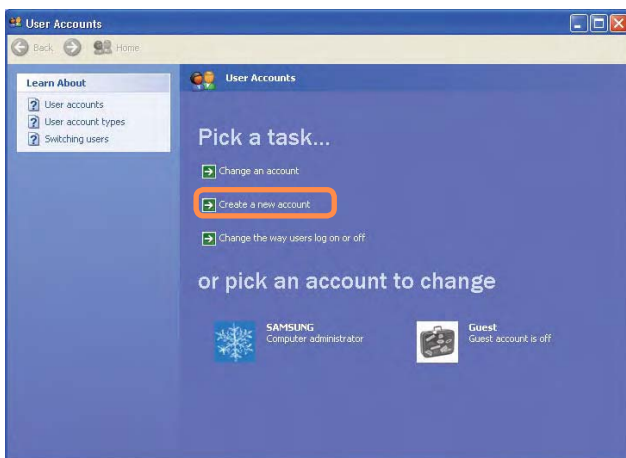
1 Click **Start > Control Panel**.

2 Click **User Account** and **Create a new Account** in sequence.

3 Enter your name and click **Next**.

4 Select an account type and click the **Create Account** button. Then, check the created account from the User Account window.

5 Click the target account and change the user account information.
You can change the account name, password, account type, and picture.



To Delete User Account

- 1 Click **Start > Control Panel > User Account**.
- 2 Select the user account to be deleted and click **Delete Account**.



The administrator account cannot be deleted. It can only be renamed or disabled.

How to Switch a User

- 1 Click **Start > Logoff**.
- 2 Click **Switch User**.



- 3 Click the user name to be switched from the Welcome screen. Then you can log on with a new user name.

Changing Resolution and Color

A resolution is the number of pixels displayed on the screen. If you set the resolution to a higher value, items on the screen will be displayed smaller and the screen looks wider than the previous. As color quality gets higher, more colors can be represented.


1 Click **Start > Control Panel > Appearance and Themes > Change the screen resolution.**

2 Click **Settings** and change the resolution and color quality. Then, click **OK.**

Move the slider bar to set the resolution.

You can select a graphic chip set.

Click the pull-down menu button to select the number of colors you want.

 It is recommended to set the resolution and color quality depending on the LCD type of your computer as the following:

LCD Type	Resolution	Color Quality
WSVGA	1024 x 600	Strongest (32-bit)

Chapter 4.


Using the Network

Wired Network	91
Wireless Network	94
Using the Easy Network Manager (Optional)	100

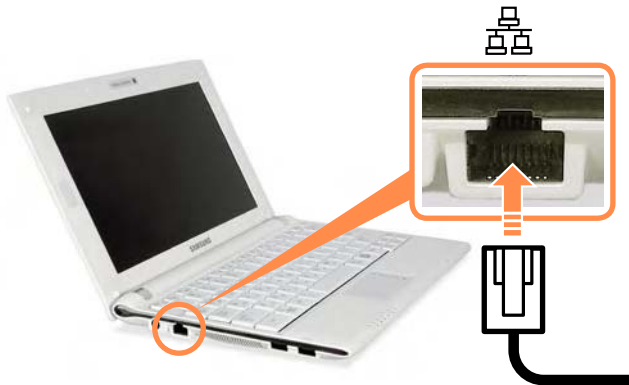


Wired Network

A wired network is a network environment used for a company network or broadband internet connection at home.

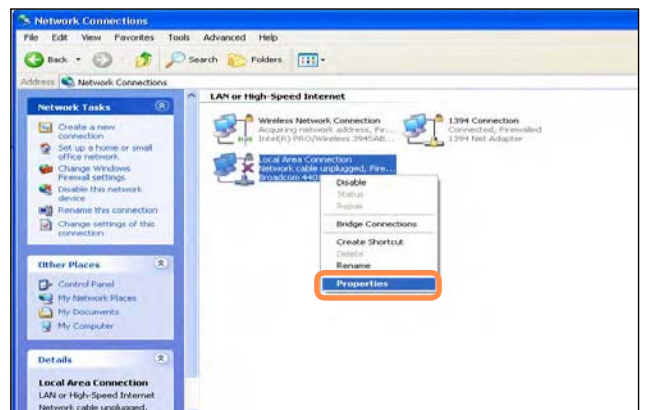
 You can also configure the network settings using the Easy Network Manager. [100](#)


- 1 Connect a LAN cable to the computer's LAN port.



- 2 Click **Start > Control Panel > Network and Internet Connections > Network Connection**.

- 3 Select **Local Area Connection** and click the right button of the touch pad and select **Properties**.



 The LAN Device name may differ depending on your computer's Network Device.

- 4 Click **General** tab and select a LAN driver from **Connect using:**. Select **Internet Protocol(TCP/IP)** and click **Properties**.

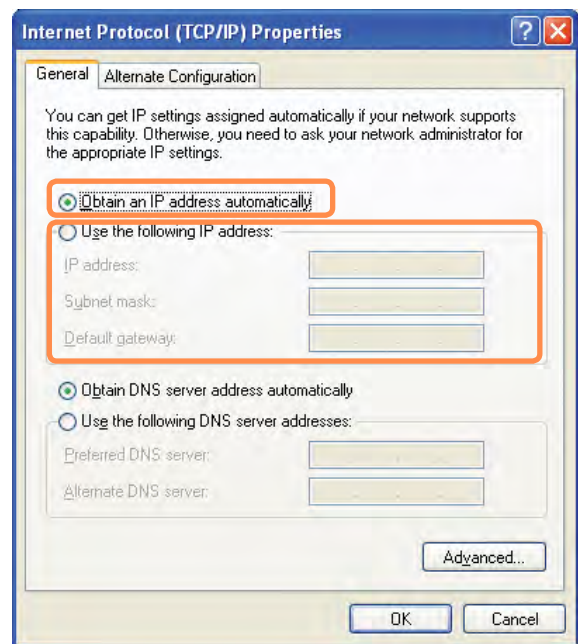


The displayed LAN driver may vary depending on the LAN device type. Click **Install** to add a network component as shown in the figure below: You can add a client, a service, or a protocol.



- 5 Configure IP settings.

Select **Obtain an IP address automatically** when using DHCP. If you use a static IP, select **Use the following IP address** and enter the values.



If the IP of your computer is not automatically assigned, contact the network administrator.

- 6 If all settings are made, click **OK**. Now the network configuration is finished.

Using both DHCP and a fixed IP simultaneously



Using the **Alternate Configuration** providing by Windows XP, you can set both automatic and fixed IP addresses and then you can select to use either of them to connect to the Internet.

- 1** Click **Start > Control Panel > Network and Internet Connections > Network Connection > Local Area Connection** by using the right button of the touch pad and click **Properties**.
- 2** Select **Internet Protocol (TCP/IP)** and click **Properties**.
- 3** Select the **Alternate Configuration** tab, select **User configured** and fill in the fields.
- 4** When the setting completes, click **OK**.

Wireless Network

A wireless network allows computers to share resources or an internet connection without using LAN cables between them.



- This description is applied only to the models equipped with wireless LAN cards or devices. You can set a wireless network by using **Easy Network Manager** as well.
☰ 100
- A wireless LAN device is optional when purchasing. Click a symbol, **+**, from **Start > Control Panel > Performance and Maintenance > System > Hardware Tab > Device Manager > Network Adapter** to check the device type.
Some of the pictures shown in this description may vary depending on the wireless LAN device.
- Press the **Fn +**  key and enable the wireless LAN features to use wireless LAN. Once the wireless LAN is enabled, the wireless LED  turns on.

Types of Wireless LAN Connections

The types of wireless LAN connections are as follows. The following describes how to use the wireless LAN based on AP connections.

● AP Connections

You can connect to the Internet or a computer on the network by connecting to AP on an AP-enabled network.



What is Access Point (AP)?

AP is a network device that connects wired LAN to wireless LAN and corresponds to the wireless hub of a wired network. Also, AP allows you to connect more than one computer where wireless LAN is enabled.

● Small Office Network

The small office network interconnects computers where wireless LAN is enabled wirelessly and is called Peer-to-Peer (or Ad HOC). This method enables the configuration of a small office network in one computer. Then, another computer is connected to the computer wirelessly for communications.

For more information on how to establish connections, see the information from **Start > Help and Support > Networking and Web**.

When you use Ad-Hoc, you have to change the McAfee Firewall settings.

☰ 169

Connecting to Wireless LAN

If an AP exists near your location, you can easily connect to wireless LAN in the method provided by Windows XP.

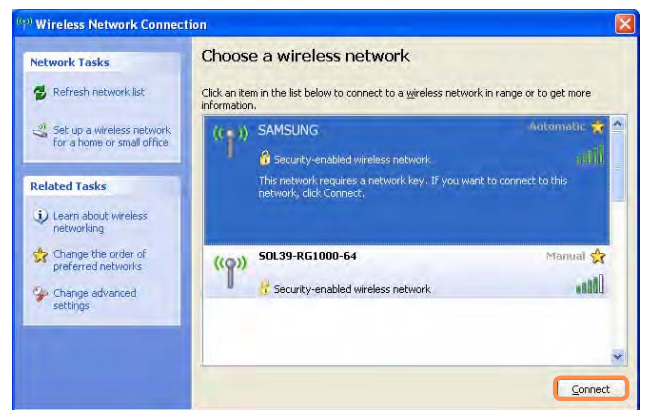
The following description is based on Windows XP Service Pack 3; thus, the pictures may vary.

- 1 Click the **Wireless Network Connection** icon  from the Taskbar using the right button of the touch pad. Then, click **View Available Wireless Networks**.



- 2 Select an AP to be connected and click **Connect**.


If a network key is set in the AP, the network key input window will appear. Enter the network key in the input window and click **OK**.



For a network key, contact the network administrator.

- 3 Once **Connected to AP** is displayed, you can use a wireless network.

To check the network connections

Place the mouse on the **Wireless Network Connection** icon  from the Taskbar. Then, the status will appear.



Connecting to computer-to-computer networks (peer-to-peer or ad hoc)

In computer-to-computer wireless networks, you can wirelessly connect 2 or more computers that have wireless LAN modules. Using this method, a computer that is not connected to the Internet can share the Internet by accessing another computer connected to the Internet.

You can connect by completing the following steps:

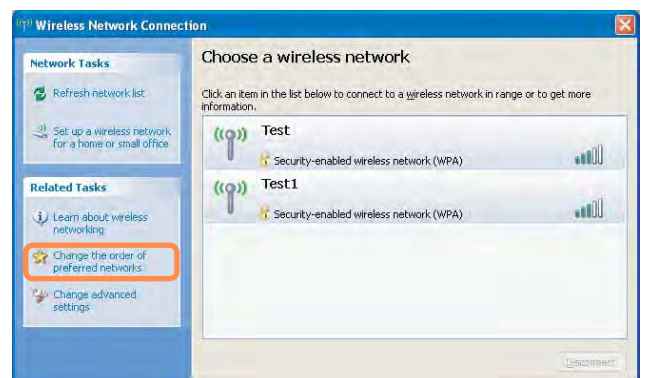
- **Step 1.** Set up a computer-to-computer network on a computer.
- **Step 2.** Connect to the configured computer from other computers.

Step 1. Setting up a computer-to-computer network

- 1** Right-click on the **Wireless Network Connection** icon on the taskbar, and select **View Available Wireless Networks**.



- 2** Click Change the order of Preferred Networks.



- 3** On the Wireless Network tab, click **Advanced**.

4 Clear 'Automatically connect to non-default network' check box, if it is selected. Select 'Computer-to-computer (ad hoc) networks only', and click **Close**.

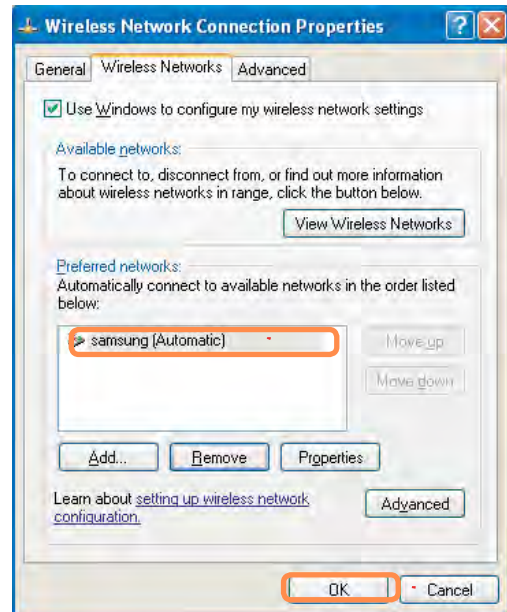
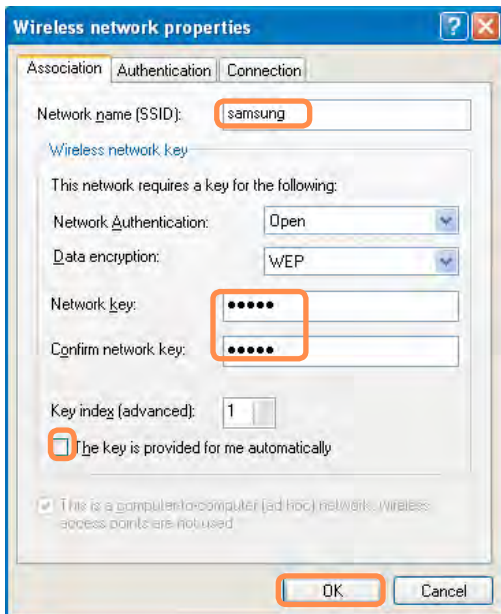
5 In the Wireless Networks tab, click **Add**.

6 Enter the network name (e.g. samsung), and unselect 'The key is provided for me automatically'. Enter the encryption key in the Network key field, and click **OK**.



To prevent a network connection from an unauthorized user, it would be better to configure a network key (encryption key). A network key consists of 5 ~ 13 alphanumeric characters (e.g. magic), or of 10 ~ 26 hexadecimal numbers (a hexadecimal number is represented by numbers '0' to '9' or letters 'a' to 'f').

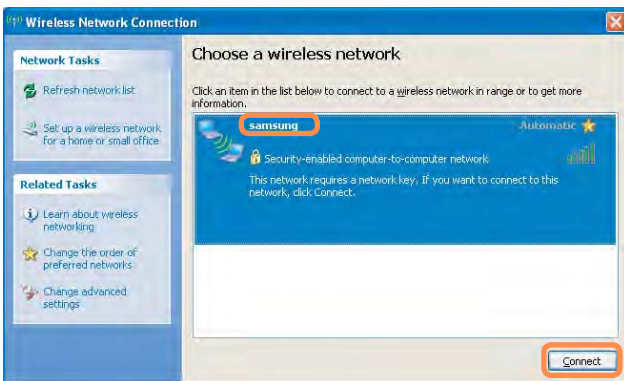
7 Check that the configured network name (e.g. samsung) is in the 'Preferred networks' item, and click **OK**.



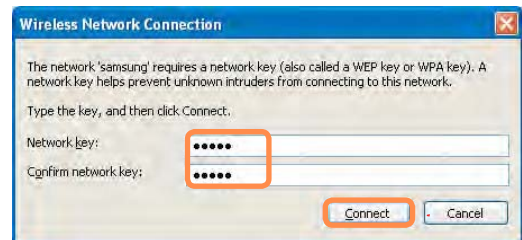
Step 2. Connecting to the configured computer

1 Right-click on the **Wireless Network Connection** icon on the taskbar, and select **View Available Wireless Networks**.

2 Select the wireless network name (e.g. samsung) specified in "Connecting to computer-to-computer networks (peer-to-peer or ad hoc)" on page 97, and click **Connect**.



3 Enter a cryptographic key in the network key box and click **Connect**.

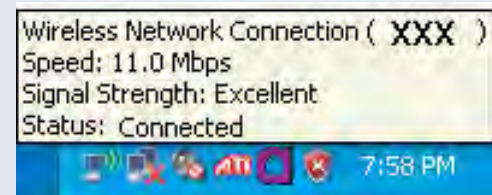


If the network key is not configured in "Connecting to computer-to-computer networks (peer-to-peer or ad hoc)" on page 97, just click **Connect**, without any keystrokes.

When connected to the wireless network, the system displays **Connected** in the selected network of the Network Connection window.



Checking the connection status
Move the mouse pointer over the Wireless Network Connection icon on the taskbar, and the connection status is displayed.



Using the Easy Network Manager (Optional)

Easy Network Manager is a program that helps configure the network settings.

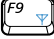
Easy Network Manager provides the following features.

- You can easily configure the network and printer settings. [100~101
- You can immediately use the network without having to define new network settings again after moving to another location. [102
By configuring the network settings (IP address, printer settings, etc.) for each location, you can immediately access the network without following the network setting procedures each time regardless of your location.
- You can diagnose the network status. [103

Network Settings

This section describes the procedures to connect to the Internet by setting up a network. The setting up procedures include procedures to add a printer to the network.

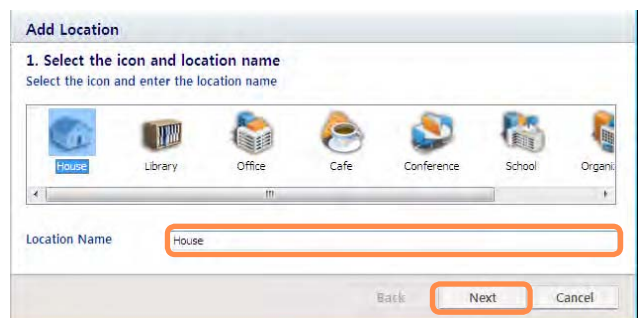
1 To use a wired LAN, connect the LAN cable to the LAN port.

To use the wireless LAN, you have to turn the wireless LAN on first by pressing the **Fn + ** keys. If the wireless LAN is turned on, the **Wireless LAN LED** lights up.

2 Click **Start > All Programs > Samsung > Easy Network Manager > Easy Network Manager**.

3 Click the **Add** button.

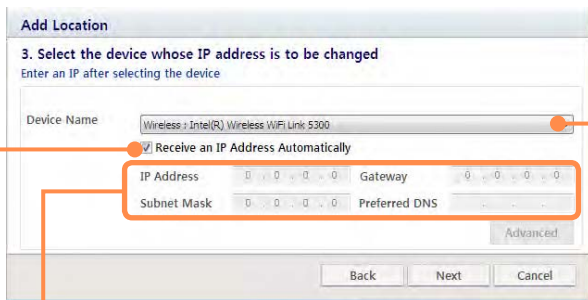
4 Select a network location icon and enter the name of the location (e.g. Home). Click the **Next** button.



- 5 Select **Direct Connection** and click the **Next** button.



- 6 Select the LAN device, setup the IP address and click the **Next** button.



Select Device

Select a device to be connected to the Internet. Select either Wired LAN or Wireless LAN.

IP Settings

To use a static IP address, fill in the fields. For the IP address information, ask your network administrator.

Obtain an IP address automatically

Select DHCP to use this option (automatic IP setting).

- 7 Click **Add Printer** and set up a printer according to the wizard.

When the printer has been added, click the **Refresh** button, select the newly added printer and then click the **Finish** button.

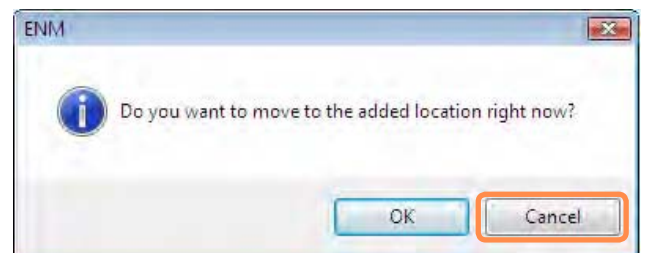


To not add a printer, click the **Finish** button.

- 8 When the network settings are complete, the **Do you want to move to the newly added location now?** message appears. Click the **Cancel** button.

An icon for the added location is created. The network settings have been completed.

If you select **OK**, the network settings for the added location are applied.



To add a new location, repeat the procedures from Step 3 above.

Using in Another Location

By configuring the network settings (IP address, printer setting, etc.) for each location, you can immediately access the network in one click, without performing the network setting procedures regardless of your location.

1 Click **Start > All Programs > Samsung > Easy Network Manager > Easy Network Manager** when connected to the Internet.

2 Select an icon that represents the corresponding location from the Saved Locations window and then click **Move**.

3 If the Internet connection is a wired LAN, you can immediately load the settings for the new location and the corresponding network connection information is displayed in the Current Location Information window.

To connect to a wireless LAN, select the **AP Setting** from the menu. The available APs are represented as icons. If you double-click an AP icon to connect to, the computer is connected to the AP through the wireless LAN and you are moved to the corresponding location.


Click the **AP Setting** menu item at the top of the screen and double-click one of the available APs.



Available AP Icon

PC Icon



- The closer to the PC icon  at the bottom of the screen, the stronger the signal from the AP is, while the further from the icon, the weaker the signal strength is.
- If a network key is required, request the key from your network administrator.
- AP Setting is supported in Windows XP SP3 or higher and Vista only.

Diagnosing the Network Status

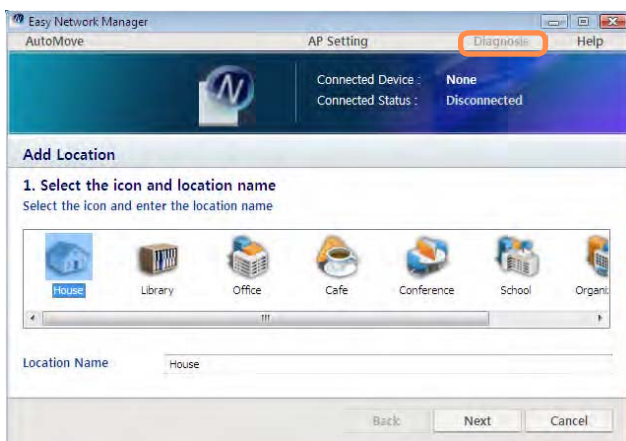
You can diagnose the network state and find solutions for why you cannot connect to the network.

1 Launch Easy Network Manager.

2 Select **Diagnosis** from the menu.

3 The Network Connections window appears.

Click **Start** to start the network diagnosis.



4 When the diagnosis is complete, a device with a problem is marked by a **X** mark icon with a description of the problem at the bottom of the window.

Chapter 5.

Using Applications


Introducing Programs	105
CyberLink YouCam (Optional)	109
Samsung Update Plus (Optional)	111
McAfee SecurityCenter (Optional)	113
Using Samsung Magic Doctor (Optional)	118
Reinstalling Software (Optional)	119



Introducing Programs

Using the software supplied with the Samsung computer, you can easily use functions and troubleshoot problems.

Try to use the software after learning about the basic use of the software. For detailed information, refer to the help section of the corresponding software.









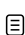
 The software programs provider may vary, depending on your computer model. In addition, some pictures may differ from actual product depending on the computer model and software version.



Multi Media Functions

- **CyberLink YouCam  (Optional)**
Using this program, you can easily capture photos and videos with your web camera. CyberLink YouCam makes it more fun to have online video chats or to record videos with live effects.  109


Management Functions

- **Samsung Update Plus  (Optional)**
Samsung Update Plus is a software function that examines and updates the Samsung software and drivers installed on your Samsung computer to the most recent versions.  111
- **McAfee SecurityCenter  (Optional)**
This is a security solution that detects and removes computer viruses and protects the computer from Internet threats.  113
- **Easy Network Manager  (Optional)**
Easy Network Manager is a program that enables you to easily configure the network settings.
You can configure the network settings for each location and you can also diagnose the network status.  100
- **Samsung Battery Manager  (Optional)**
Samsung Battery Manager is a power management program that provides easy-to-use power management and power saving settings so that the battery usage time can be extended.  138
- **Battery Life Extender (Optional)**
The Battery Life Extender is a battery power management program that enables extending the battery life.  140


- **Easy Display Manager (Optional)**

Easy Display Manager is a program that displays the changed setting on the screen when a setting is changed by pressing the shortcut keys, and enables changing the display mode through the Display Settings window.



Example) The icon that appears when pressing the **Fn +**  keys to change the screen brightness.


- **Easy SpeedUP Manager (Optional)**

This program enables you to select operation mode when you need maximum system performance or low-noise/low power consumption with one-click.  60

For Windows XP model, Easy SpeedUp Manager function is provided in Magic Keyboard program.

If you reinstall Windows XP, you have to install the Magic Keyboard program additionally using the System Software Media in order to use this function.

- **MS Live Skydrive  (Optional)**

If you double-click the Microsoft Live icon  when the computer is connected to the Internet, you can visit the website that allows you to use free web storage provided by Microsoft.

If you sign up and log onto the website, you can use the web storage for free.

For more information, refer to the help center on the website.

- **Easy Resolution Manager  (Optional)**

This program allows you to set a resolution of 1024x768 pixels on a computer that supports a resolution less than 1024x768 pixels.

You can view the whole picture when running a program or game that supports a resolution of 1024x768 pixels.

However, when the resolution is set to 1024x768 pixels, the picture on the screen may be distorted.


- **Phoenix FailSafe**  (Optional)

Phoenix FailSafe is a program developed by Phoenix Technologies LTD, that enables PC users to protect and track their PC via the FailSafe website when their PC is lost or stolen. For more information, please refer to the online help of the software or the FailSafe website.

Troubleshooting Functions

- **SAMSUNG Magic Doctor**  (Optional)

SAMSUNG Magic Doctor is troubleshooting software provided by Samsung Computer for system diagnosis, and restoring the system.

The system diagnosis function enables users to diagnose system problems without assistance from others.  118

- **Samsung Recovery Solution**  (Optional)

Samsung Recovery Solution provides a **Restore Function** that enables you to easily restore your computer to a previous, normal state when a problem occurs with your computer, as well as a **Backup Function** that enables you to easily save your computer's current status and your data.

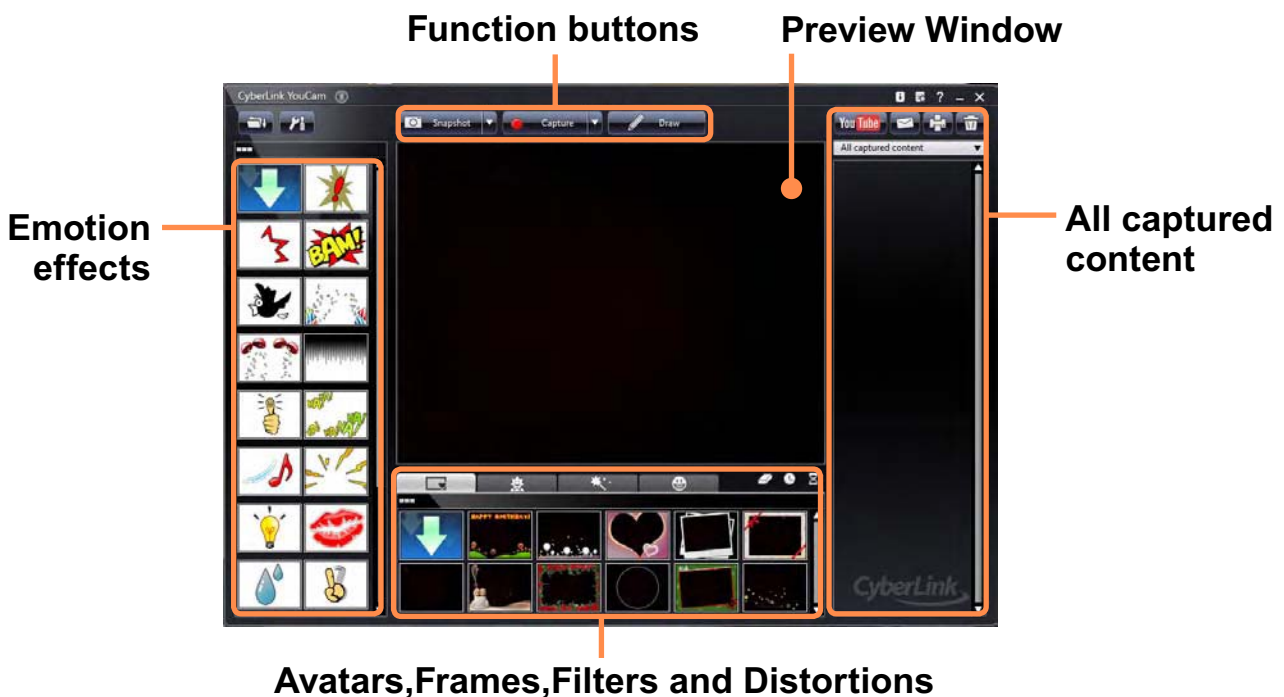
For models with an **SSD** (Solid State Disk), Samsung Recovery Solution is not provided.

CyberLink YouCam (Optional)


CyberLink YouCam makes it more fun to have online video chats or to record videos with live effects.

- The program versions described in this manual are subject to change and the screen images and terms in this manual may differ from actual product.
 - For more information on how to use the program, refer to the online help.
- Do not take pictures or record video of someone without their permission.
 - Do not take pictures or record video in locations where photography is prohibited.
 - Do not take pictures or record video in locations where you could violate another person's privacy.

1 Double click the **CyberLink YouCam** icon  on the Desktop. Or click **Start > All programs > Samsung > CyberLink YouCam > CyberLink YouCam**.

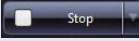




If you click the **settings** button , you can configure the capture, display and document settings.

2 Click the **Snapshot**  or **Capture** button  in front of the camera. A snapshot is taken or video starts recording.



- To stop a video recording, click the **Stop**  button. The recording is stopped.
- By applying several effects or avatars to your photos or videos while capturing, you can make your own contents fun and interesting.

3 You can view your captured photos and videos in the **All captured content** window.

You can view a picture or watch a video by double-clicking it.

Samsung Update Plus (Optional)

Samsung Update Plus is software that examines and updates the Samsung software and drivers installed on your Samsung computer to the optimal version.

- To check for updates and update your computer using Samsung Update Plus, your computer must be connected to the Internet.
- The update search result may differ depending on your computer model.

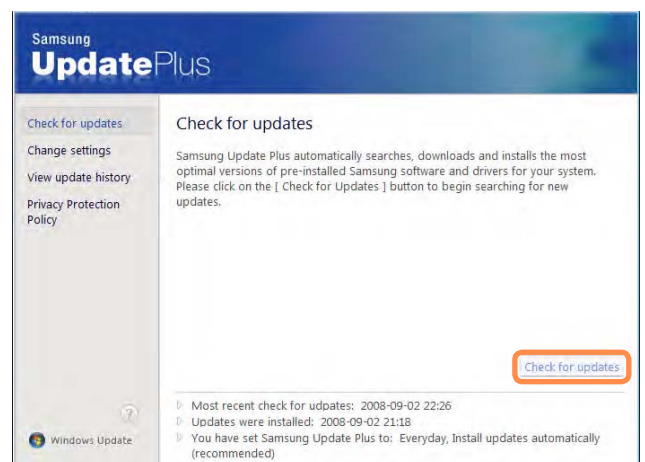
Samsung Update Plus does not provide updates for applications installed after purchasing the computer.

To update the software and drivers

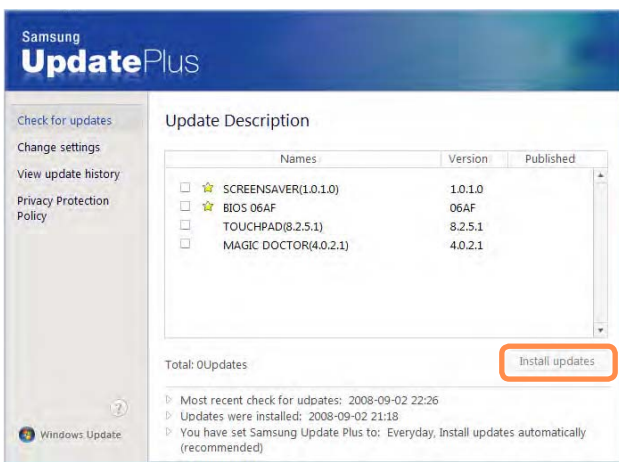
- 1 Select **Start > All Programs > Samsung > Samsung Update Plus > Samsung Update Plus**.

If this is the first time you are running the program, a window will appear asking you if you agree to the agreement in the window. Click **Agree** to use this software.

- 2 If you click on **Check for updates**, new updates are searched for.

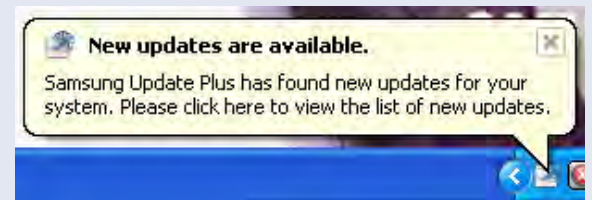


- 3 If there are available software or driver updates for your computer, the available updates will be listed. Select the required updates from the list and click **Install Update** to start the update. (The update list on the screen may differ depending on the computer model.)



Automatic update items display

By default, your computer is configured to automatically check for updates. If there is a new update available, this is notified in the notification area. Click the balloon help icon in the notification area. Here you will be able to find the latest available updates.



Updates that must be installed separately.

If you select an update item that must be installed separately, a message appears informing you of this. Follow the instruction message to correctly install it.

McAfee SecurityCenter (Optional)


McAfee SecurityCenter (a virus/spyware detection and protection software that includes a firewall function. Hereafter, referred to as “McAfee”) is software that protects your PC from various Internet threats as well as detecting and removing viruses.

- For more detailed information on the program, refer to the McAfee help.
- You can register McAfee when connected to the Internet.
- McAfee software is optional. It may not be supplied for some models or it may be supplied through the McAfee installation icon. When the installation icon is provided, you have to install the program referring to the Installing McAfee section.
- A different anti-virus program may be provided depending on the computer model.

Installing McAfee

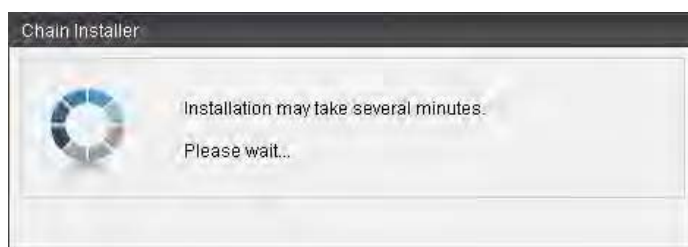
For some models, an **Install McAfee Web Essentials** icon is located on the Desktop. In this case, you can install the McAfee software according to the following procedures and then use the McAfee software.

For some models, a **McAfee Security Center** icon  is located on the Desktop, since the software is already installed, the installation step is not required.

- ① Double click the **Install McAfee Web Essentials** icon  on the Desktop.



- ② The **Chain Installer** window opens and the installation begins automatically. Please wait for a moment.



- ③ When the installation is complete, the **Chain Installer** window disappears.

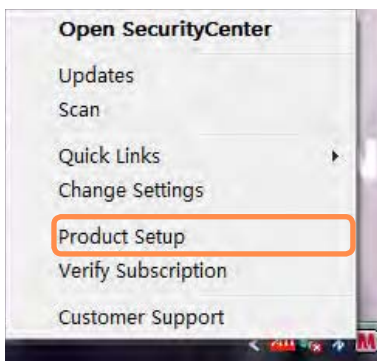
Using McAfee

To use McAfee, user registration is required. If a user is not registered, even though virus inspection is supported, your PC will not be completely protected because the virus information will not be updated with the latest information. The procedures to inspect and heal viruses after the user registration will be described below.

User Registration

1 The **Program Setup** screen appears while booting. Click **Next**.

If the **Program Setup** screen does not appear, right-click over the **McAfee** icon  in the Taskbar and then select **Product Setup** from the pop-up menu.



2 The **End User License Agreement** appears.


Check if the country has been correctly selected and then click **Accept**.

3 The **Create New McAfee Account** item appears.

Be sure to fill in all the fields and click **Next**. The **Program Setup Completed** window appears.



If you have already registered with McAfee, click **Login** and enter the registered email address and password to login. The **Program Setup Completed** window appears.

A screenshot of the McAfee SecurityCenter 'Create New McAfee Account' screen. The screen has a title bar with the McAfee logo and 'McAfee SecurityCenter'. Below the title bar, there are two sections: 'Current McAfee User' with a 'Login' button, and 'Create New McAfee Account' with a form containing six input fields: First Name, Last Name, E-mail Address, Re-enter E-mail Address, Password, and Re-enter Password. The 'Next' button is highlighted with an orange box.

Inspecting and Healing Viruses

The procedures to check if the computer's files or information have been infected by a virus and to heal viruses found by McAfee are described below.

1 Click **Start > All Programs > McAfee > McAfeeSecurityCenter**.

2 Click the **Scan** button on the left side of the program. The **Scan** begins.


At this time, if a virus is found, it is immediately healed during the inspection.



3 If a virus has been found, click **View Results**.

The viruses are listed. Since the corresponding viruses have already been removed, you can use your computer without any concern.



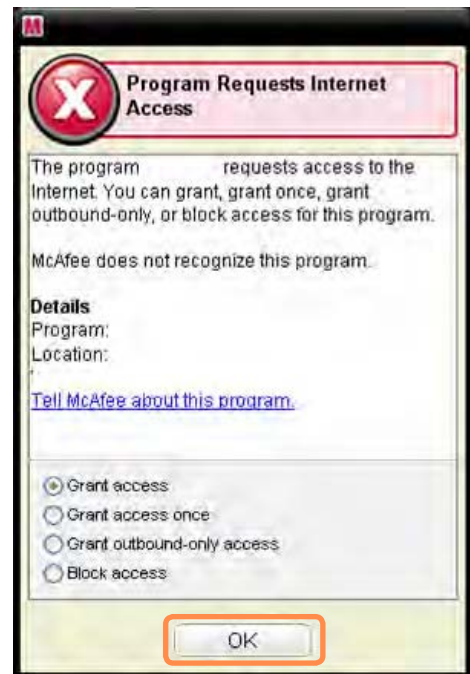
- For possible virus infections (where it is not completely certain), the **Detected** message appears. In this case, the items will be maintained or deleted depending on your decision.
- To deal with new viruses, please always keep McAfeeSecurityCenter up to date. In general, it is automatically updated when connected to the Internet. Alternatively, you can update it manually by clicking **Update**  after connecting to the Internet.

Configuring the McAfee Firewall

The McAfee Firewall is configured for the product when purchasing the product in order to protect the computer from viruses. However, if the firewall is activated, you may not connect to the network or the Internet properly. In this case, you have to change the settings as follows.

Method 1) When you need to select **Allow Access** in the **Server or Internet Access Request** window.

When you connect to a bank, stock market, or gaming website, an access request window appears. In this case, select **Allow Access** in the window and click **OK**. Then you can install the program normally or open the page.



Method 2) When you need to deactivate the Firewall

If you cannot connect to the Internet when using a broadband Internet service, you can connect to the Internet normally if you disable the McAfee Firewall. However, since it may cause a security problem, be careful when doing so.

- ① Double-click the **McAfee Security Center** icon from the Desktop.
- ② Click the **Advanced menu** at the bottom left and click **Configure > Internet&Network**.
- ③ Turn the **Internet&Network** at the right to **Off**, set the **Select when to re-enable firewall** to **Never** and then click **OK**.
- ④ Click **Home** in the left menu pane and click **Ignore** next to the '**Firewall protection is disabled**' message.



It is recommended activating the Windows Firewall for your computer's safety when you have disabled the McAfee Firewall. To activate the Windows Firewall, click **Start > Control Panel > Windows Firewall > Change Settings > On(recommended)**.

Using Samsung Magic Doctor (Optional)

Magic Doctor is troubleshooting software provided by Samsung Computer. A user can diagnose system problems via one-click or by selecting diagnostic items.

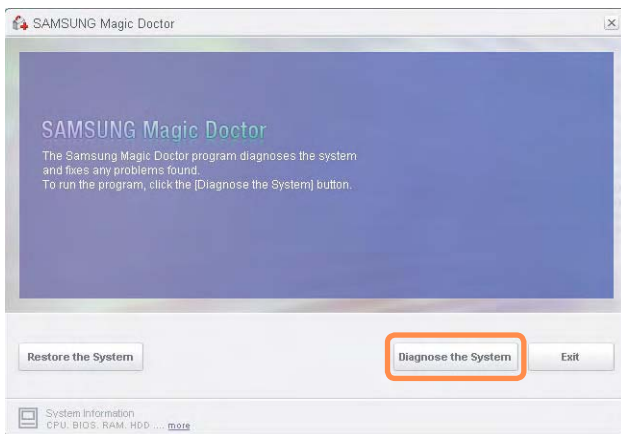


The screens used in this manual may differ from actual screens according to the program version.

Diagnosing the System

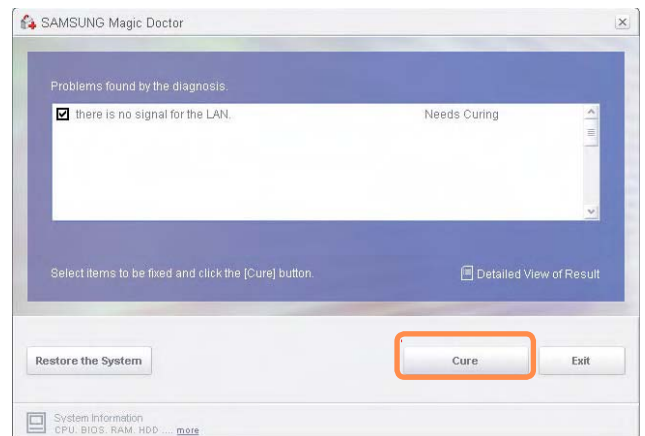
1 Select **Start > All Programs > Samsung > Samsung Magic Doctor > Samsung Magic Doctor**.

2 Click the Diagnose the System icon.



The system status diagnostics start.

3 When the system status diagnostics are complete, the diagnostics result appears.



If a problem has been found, click on **Cure** for Samsung Magic Doctor to cure the problem.

Reinstalling Software (Optional)

If you have reinstalled the Windows operating system, or the system and program do not operate properly, you can re-install the driver and program using the System Software Media.

- When software is not working properly, it is recommended removing the software using the Add or Remove Programs of the Control Panel and reinstalling the software using the System Software Media.
- The System Software Media is supplied as a CD or DVD depending on your computer model.
- To use the System Software Media, the external USB ODD must be connected to the computer. The following descriptions are supposing that the external USB ODD is connected.
- Some model is not supplied System Software Media depending on your computer model.

Running the System Software Media

Insert the **System Software Media** into the CD-ROM drive. The initial screen appears automatically.



Standard Installation	This displays a list of drivers or programs that are not currently installed on your computer from the system software Media provided. All necessary components are installed using the factory defaults.
Minimum Installation	This displays the components (driver, Windows programs, etc) that, if not installed, may cause problems with the system performance. You can install only required components.
Custom Installation	You can customize the installation of drivers and programs.

Installing drivers and programs

- 1 Select **Standard Installation** in the **System Software Media** main screen.
- 2 The system is scanned to display the drivers and programs that need to be installed.
- 3 Click **OK**.
The drivers and programs are automatically installed as factory defaults.



- 4 When done, restart the system.

Chapter 6.

Settings and Upgrade

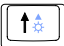
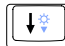
LCD Brightness Control	122
BIOS Setup	124
Setting a Boot Password	128
Changing the Boot Priority	131
Upgrading Memory	132
Battery	134
Using the Security Lock Port	142




LCD Brightness Control

You can adjust the LCD brightness in 8 levels.

Adjusting LCD Brightness Using Keyboard

Press the **Fn+**  or **Fn+**  to adjust the brightness of LCD.

The LCD brightness has eight levels of degree.

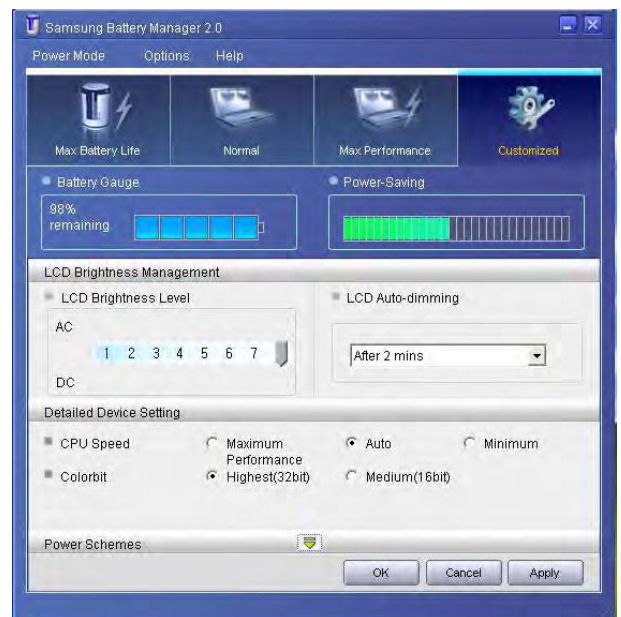
By pressing the **Fn+** , the LCD gets brighter by one level of degree.

Adjusting LCD Brightness Using Samsung Battery Manager

Appropriate LCD brightness is set for each mode in **Samsung Battery Manager**. In user settings mode, you can select the brightness level.

Click **Start > All Programs > Samsung > Samsung Battery Manager > Samsung Battery Manager**.

(for example, in Customized mode)
In this mode, you can change the brightness and device setting details.





LCD Brightness

The LCD brightness settings for maximum battery mode, general mode, and maximum performance mode in Samsung Battery Manager are not maintained when your computer reboots.

Only the LCD brightness setting in the user settings mode is maintained once you reboot the computer.

For information on the other features of Samsung Battery Manager, see the description on batteries. 138



● To Maintain the Changed LCD Brightness After Reboot

Configure the following settings to maintain the LCD brightness set using the screen adjustment key or **Samsung Battery Manager**.

- ① Turn on the computer. If the SAMSUNG logo appears, press the **F2** key. Then, setup will start.
- ② Change the value of Brightness Mode Control on the Boot menu to User Control.
- ③ Press the **F10** key to save the change and complete setup.

● How to Reduce Battery Consumption

Adjust the screen brightness to a darker value or select the maximum battery mode in **Samsung Battery Manager** to reduce battery consumption.

● Bad pixels of an LCD

The LCD may have less than 4 bad pixels but it does not affect the computer performance. This product may have bad pixels of the same level as the products made by other companies.



Caution for Cleaning up LCD

Wipe the LCD from the center to the outside with a soft cloth soaked in a computer-dedicated detergent. If you wipe the LCD firmly, it may have damage.

BIOS Setup

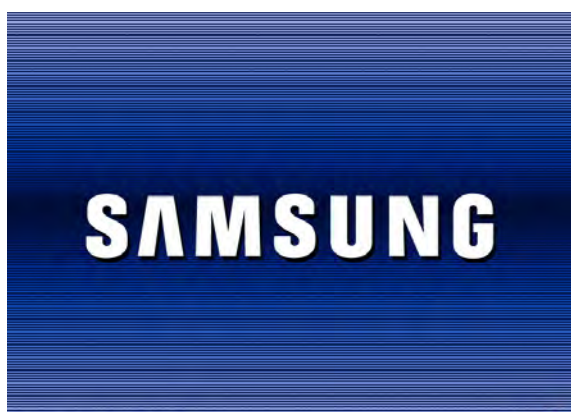
The BIOS Setup enables you to configure your computer hardware according to your needs.

- Use the BIOS setup to define a boot password, change the booting priority, or add a new device.
Since incorrect settings may cause your system to malfunction or crash, take care when configuring the BIOS.
- The functions of the BIOS setup are subject to change for product function enhancement purposes.

The BIOS Setup menus and items may differ depending on your computer model.

Entering the BIOS Setup

- 1 Turn the computer on.
- 2 When the booting screen (SAMSUNG logo) appears, press the **F2** key to enter the BIOS Setup.



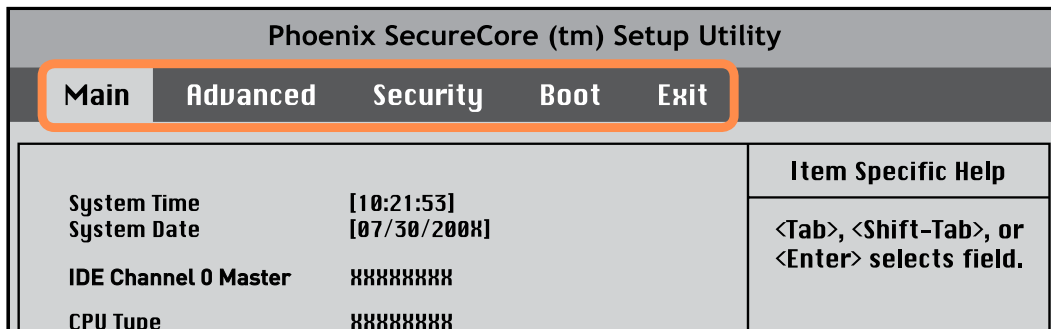
Press the **F12** key while the booting screen(SAMSUNG logo) appears, the system will try to boot from the network.

- 3 After a moment, the BIOS setup screen appears.
The items in the BIOS setup may differ depending on the product.

The screenshot shows the Phoenix SecureCore (tm) Setup Utility interface. At the top, the title bar reads "Phoenix SecureCore (tm) Setup Utility". Below it is a menu bar with options: "Main", "Advanced", "Security", "Boot", and "Exit". The "Main" menu is currently selected. The main display area is divided into two sections. The left section, labeled "Setup Items", lists various system parameters: System Time [10:21:53], System Date [07/30/200X], IDE Channel 0 Master (XXXXXXXX), CPU Type (XXXXXXXX), CPU Speed (X.XX GHz), Total Memory (XXX MB), BIOS Version (XXXXXXXX), and MICOM Version (XXXXXXXX). The right section, labeled "Help", contains "Item Specific Help" text: "<Tab>, <Shift-Tab>, or <Enter> selects field." At the bottom of the screen is a legend for keyboard shortcuts: F1 Help, Esc Exit, ↑↓ Select Item, ←→ Select Menu, F5/F6 Change Values, Enter Select ► Sub-Menu, F9 Setup Defaults, and F10 Save and Exit. Three orange callout boxes with lines pointing to the menu bar, the help text, and the main list of items are labeled "Setup Menu", "Help", and "Setup Items" respectively.

Phoenix SecureCore (tm) Setup Utility	
Main Advanced Security Boot Exit	
System Time [10:21:53] System Date [07/30/200X] IDE Channel 0 Master XXXXXXXX CPU Type XXXXXXXX CPU Speed X.XX GHz Total Memory XXX MB BIOS Version XXXXXXXX MICOM Version XXXXXXXX	Item Specific Help <Tab>, <Shift-Tab>, or <Enter> selects field.
F1 Help ↑↓ Select Item F5/F6 Change Values F9 Setup Defaults Esc Exit ←→ Select Menu Enter Select ► Sub-Menu F10 Save and Exit	

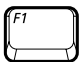
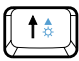



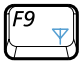




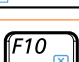
The BIOS Setup Screen



Menu	Description
Main	Used to change the basic system and environment settings.
Advanced	Used to configure advanced functions on your computer for devices and chipsets.
Security	Used to configure security functions, including passwords.
Boot	Used to set the boot priority and other boot options
Exit	Used to exit the Setup either saving the changes or not.

System Setup Keys

In the Setup, you have to use the keyboard.

F1		Press to view the Setup Help.
Up & Down Keys	 	Press to move up and down.
F5/F6	 	Press to change the item value.
F9		Press to load the default Setup settings.
ESC		Press to return to a higher level menu or to move to the Exit menu.
Left & Right Keys	 	Press to move to another menu.
Enter		Press to select an item or to enter a sub menu.
F10		Press to save the changes and exit Setup.



The keyboard image and color may differ from the actual keyboard.

Setting a Boot Password

When setting a password, you have to enter a password to use the computer or enter the BIOS Setup.

By configuring a password, you can restrict system access to authorized users only and protect data and files saved on the computer.



Do not lose or forget your password.

If you have forgotten your password, contact a Samsung service center. In this case, a service fee will be charged.

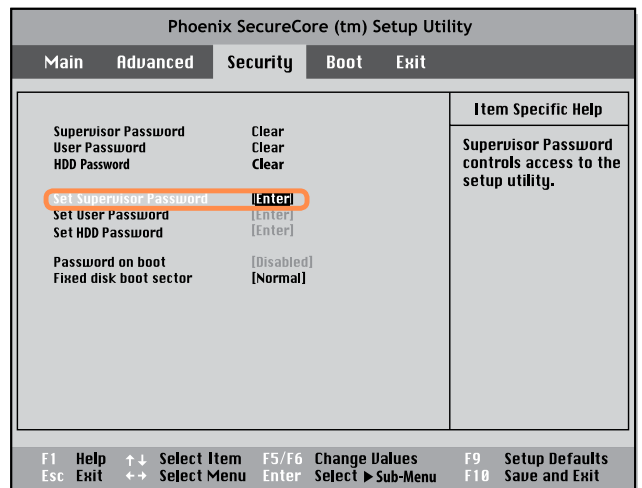
Setting a Supervisor Password

A Supervisor Password is required to turn the computer on or to start the System Setup.

When setting a Supervisor Password, users other than a supervisor cannot use the computer.

1 Select the **Security** menu in the BIOS Setup.

2 In the **Set Supervisor Password** item, press <Enter>.



- 3** Enter a password, press <Enter>, re-enter the password for confirmation, and press <Enter> again.

The password can be up to 8 alphanumeric characters. Special characters are not allowed.



- 4** When a message confirming the password configuration appears in the **Setup Notice** window, press <Enter>.

The supervisor password has been set.

The supervisor password is required to turn the computer on or to enter the BIOS Setup.

Setting a User Password

The User Password restricts access to the computer or for configuring the BIOS Setup, like a Supervisor Password. However, the Setup items that can be configured with a User Password are restricted, unlike for a Supervisor Password.

Before configuring a user password, a **supervisor password** must have been configured. Deactivating the supervisor password also deactivates the user password.

In the **Set User Password** item, press <Enter> and complete the procedures from Step 3 of Setting a Supervisor Password.

Setting Up a Boot Password

To setup a boot password, the administrator password (**Set Supervisor Password**) should be set in advance.

Set the **Password on boot** item to **Enabled**.

Once a boot password is set, you have to enter a password to boot up the computer.

Setting up a Hard Disk Drive Password (Optional)

A supervisor password must be set using the Set Supervisor Password menu.

If you set a password for a hard disk drive, it cannot be accessed from another computer.

Press <Enter> in the **Set HDD Password** item and define a password as described in Step 3 of the Setting up the Supervisor Password.



The hard disk drive password setting function is not provided for some models.



Changing the hard disk drive password

For security purposes, you can only change a hard disk drive password after restarting the computer by pressing the computer **Power** button. If you cannot change the hard disk drive password or the **HDD Password Frozen** message appears when entering the BIOS Setup and then selecting **Security > HDD Password**, press the **Power** button to turn the computer on again.

Deactivating the Password

- 1 Press <Enter> on the password to be deactivated. For example, to deactivate a supervisor password in the **Set Supervisor Password** item, press <Enter>.
- 2 In the **Enter Current Password** item, enter the currently configured password and press <Enter>.
- 3 Leave the **Enter New Password** item field empty, and press <Enter>.
- 4 Leave the **Confirm New Password** field empty, and press <Enter>.
- 5 In the **Setup Notice** window, press <Enter>.
The password is deactivated.