



# REALTEK

## RTL8723BE Combo module

### Installation

**Rev. 1.0**  
**28 Jan 2013**



**Realtek Semiconductor Corp.**

No. 2, Innovation Road II, Hsinchu Science Park, Hsinchu 300, Taiwan

Tel.: +886-3-578-0211. Fax: +886-3-577-6047

[www.realtek.com.tw](http://www.realtek.com.tw)

# Installing the Wireless PCIe miniCard module

## Hardware

Step 1. Shut down the computer.

Step 2. Installing PCIe MiniCard module to PCIe MiniCard connector.



Step 3. Connect two external Wi-Fi antennas on I-PEX connectors.



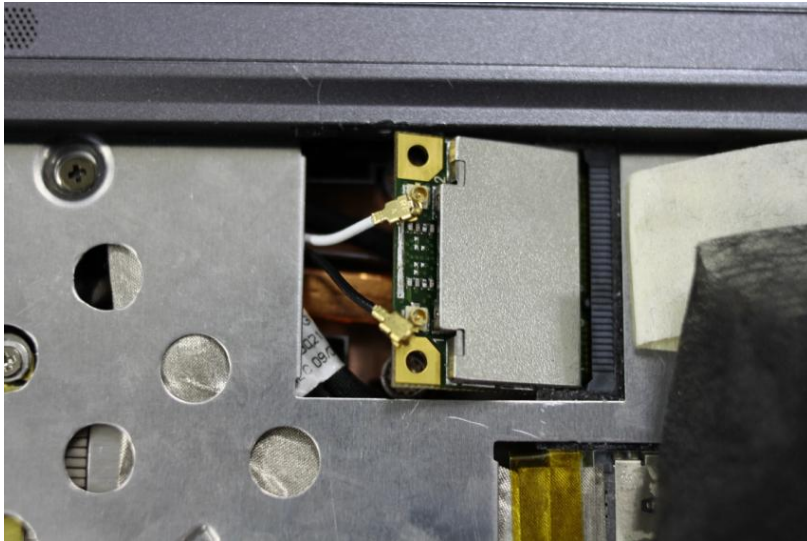
step4. Power on the computer.

# Un-installing the Wireless PCIe MiniCard module

## Hardware

Step 1. Shut down the computer.

Step 2. Remove 2 external Wi-Fi Antennas from the Wireless PCIe MiniCard module board.



**Step 3. Remove the Wireless PCIe MiniCard module board from PCIe MiniCard connector port.**



**Step 4. Power on the computer.**

## **Installing the Wireless PCIe miniCard module Software**

Before you proceed with the installation, please notice following descriptions.

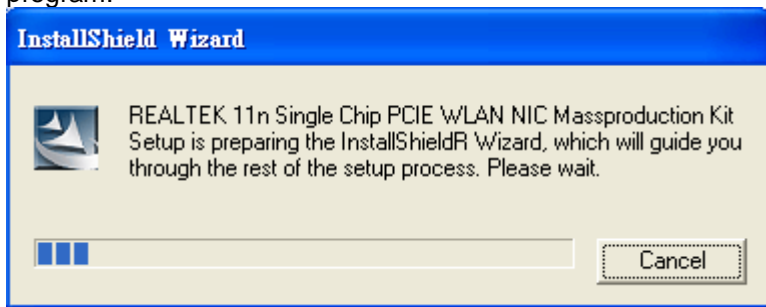
**Note1: The following installation was operated under Windows XP.  
(Procedures are similar for Windows 98SE/Me/2000.)**

**Note2: If you have installed the WLAN driver & utility before, please  
uninstall the old version first.**

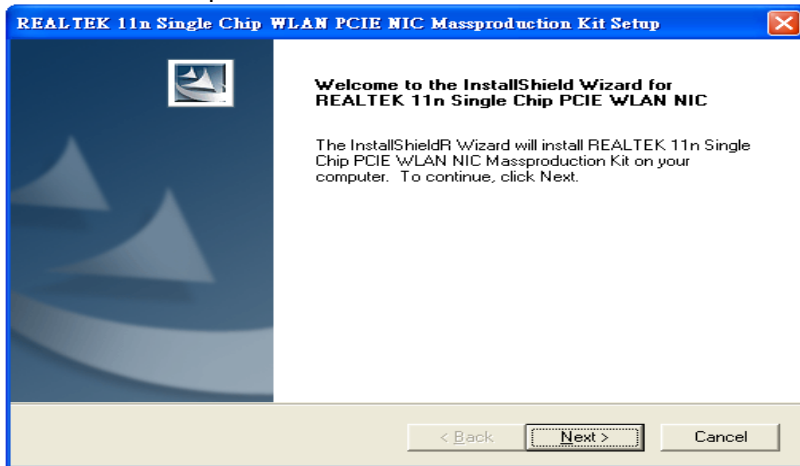
**If you install the “Realtek11n Single Chip PCIE WLAN NIC Mass production kit” into your laptop computer  
before installing the software program from**

the CD.

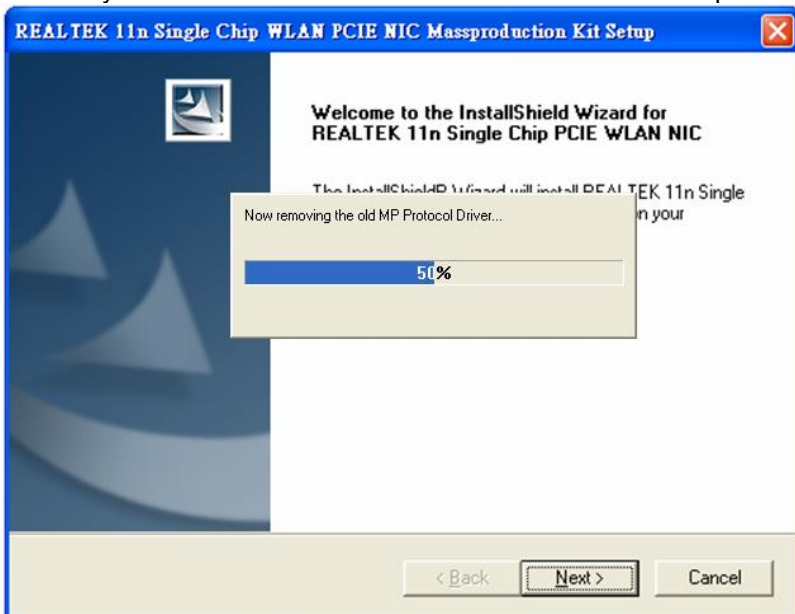
A. Insert the Installation CD to your CD-ROM Drive. Execute the “setup” program.



B. Click “Next” to process the installation

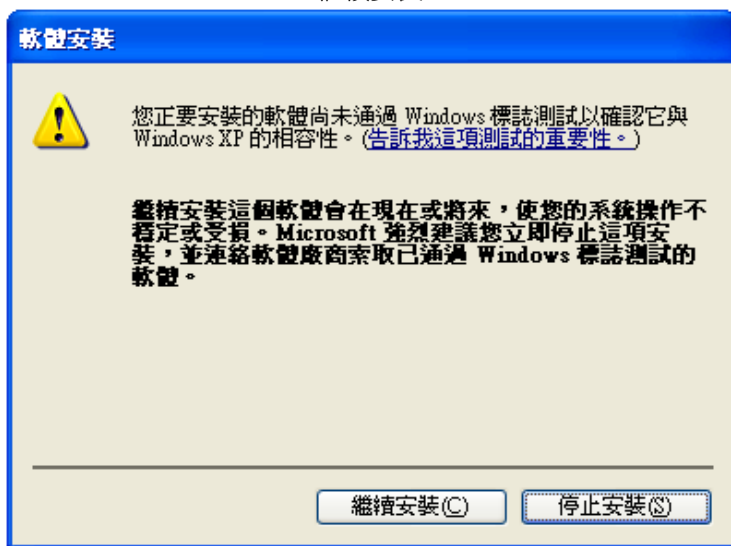


C. The system starts to install the software of the WLAN adapter.

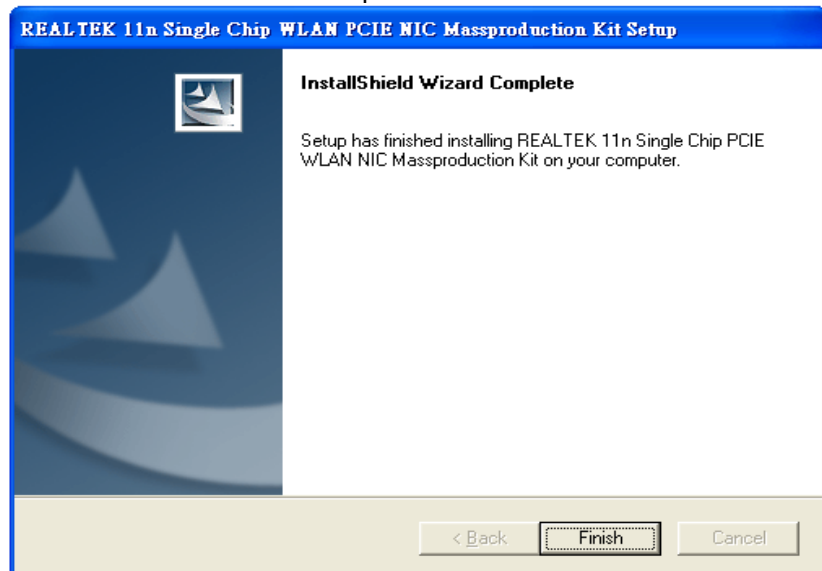


D. The system will automatically detect the card and display “Hardware

Installation” screen. Click “繼續安裝” to continue.



E. Please click “Finish” to complete the installation.



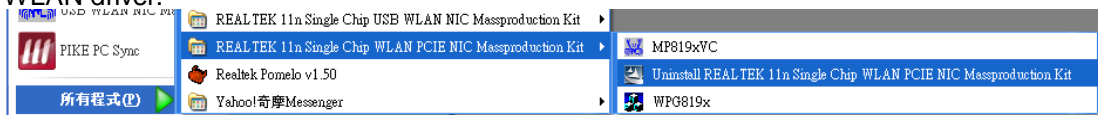
# Un-installing the Wireless PCIe MiniCard module Software

If you install Realtek11n Single Chip PCIE WLAN NIC Mass production kit into your laptop computer after installing the software program from the CD.

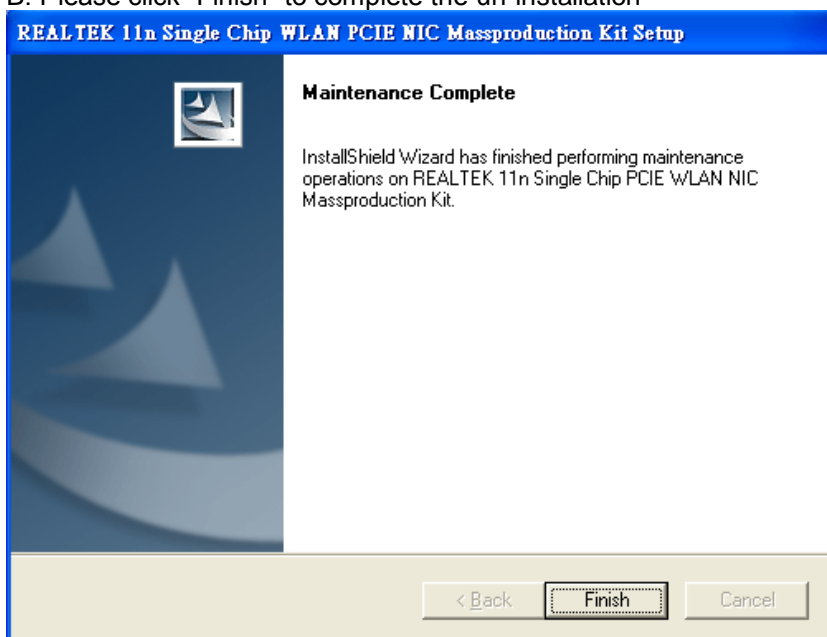
When you install Realtek11n Single Chip WLAN PCIE MINICARD Adapter, the following dialog will be shown.

A. Uninstall the RTL8723BE WLAN Driver from “Start”→ “All Programs”→ “Realtek11n Single Chip WLAN PCIE NIC Mass production kit” or “Control Panel”→“Change or Remove Programs”.

Please click “Un-install” (or “Change/Remove”) to remove RTL8723BE WLAN driver.



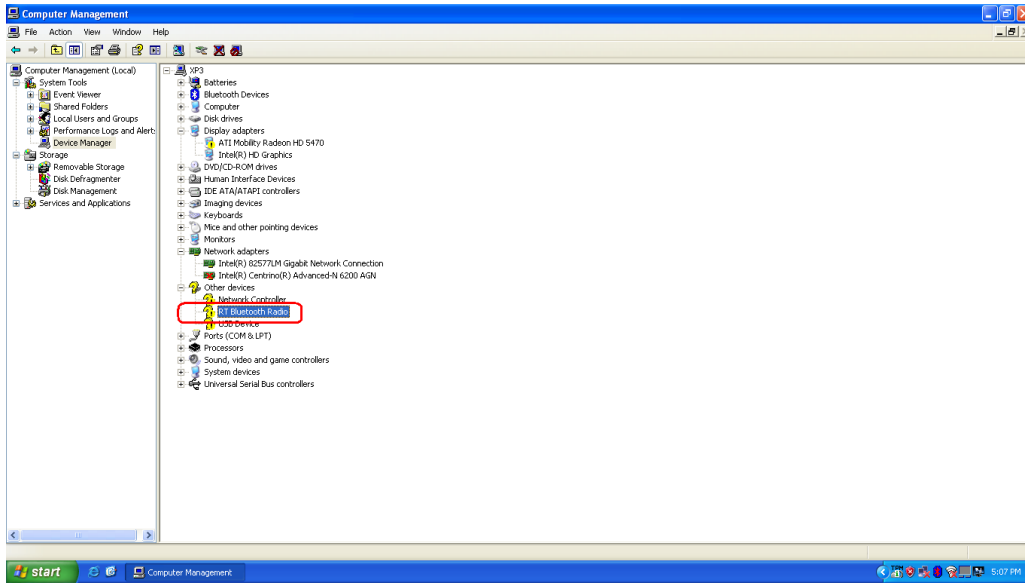
B. Please click “Finish” to complete the un-installation



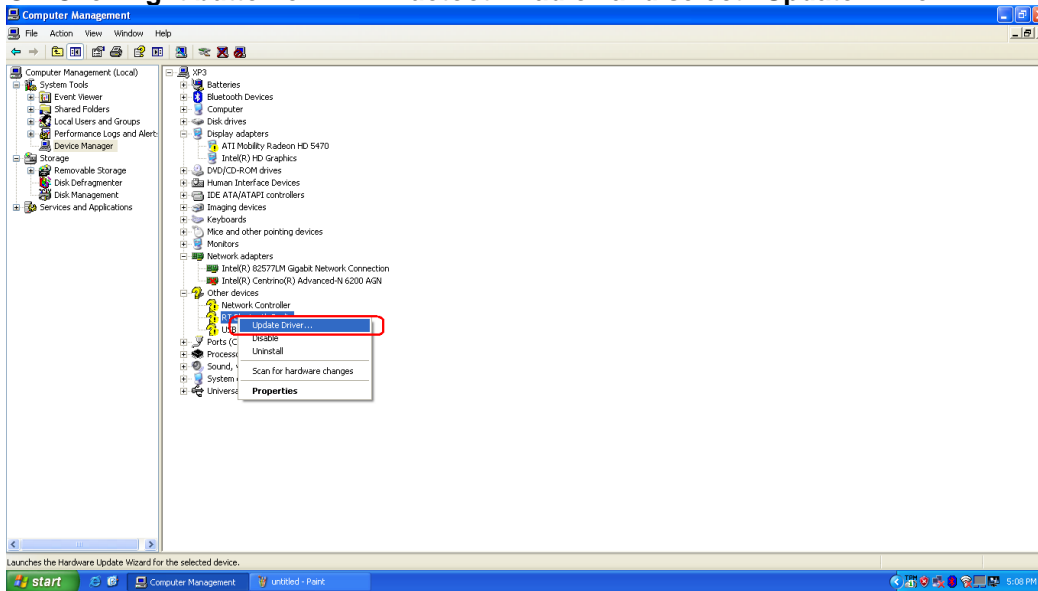
# Installing the Bluetooth USB Module Software

A. Insert the mini-card into system connector.

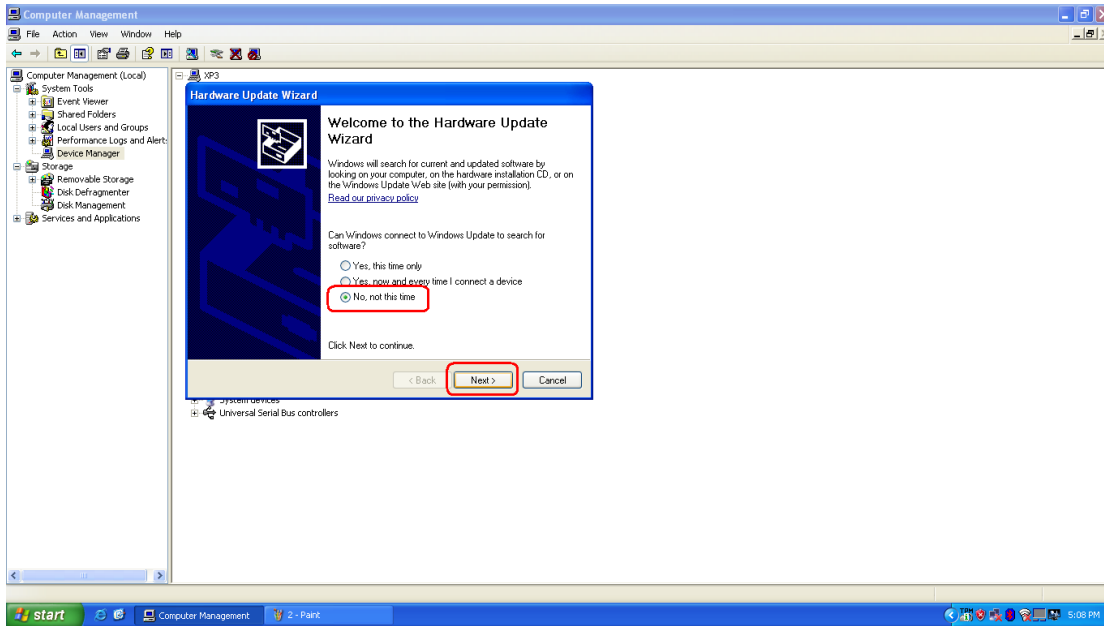
B. Boot on system then the “RT Bluetooth Radio” device will show up in device manager.



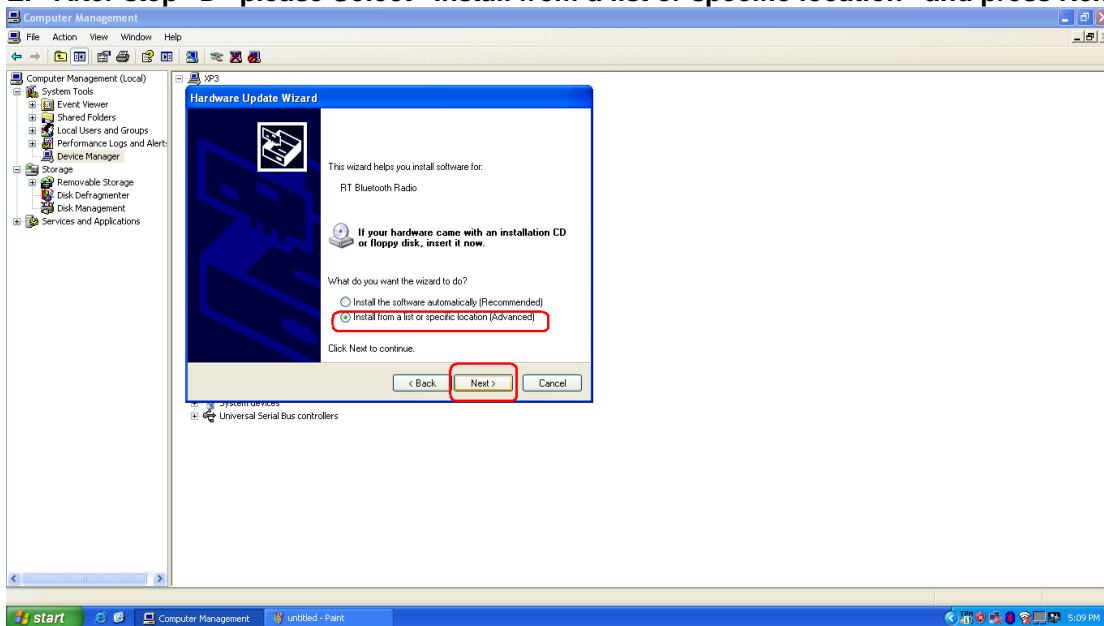
**C. Click right button on “RT Bluetooth Radio” and select “Update Driver”.**



**D. After select “Update Driver” then the Hardware Update Wizard will pop up, please select “No, not this time” and press Next button.**

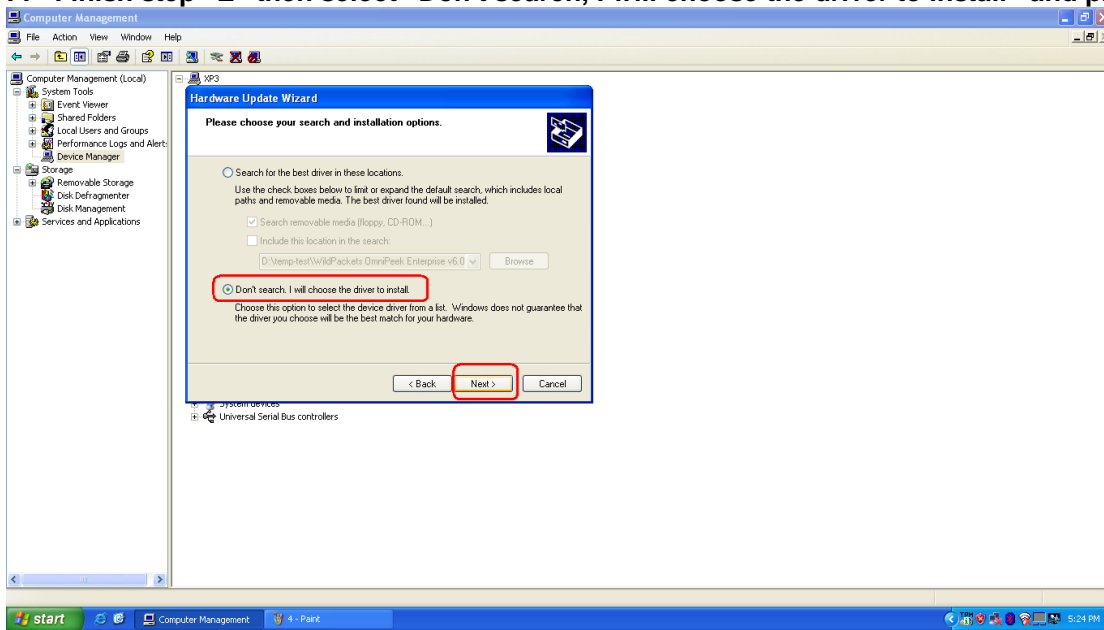


**E. After step “D” please Select “Install from a list or specific location” and press Next button.**

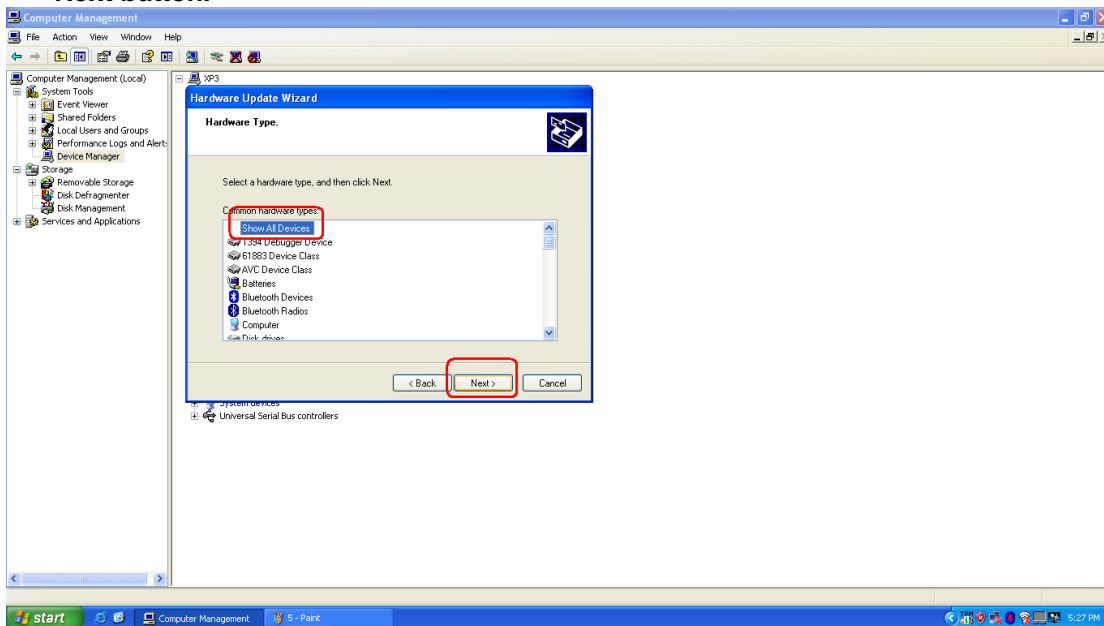




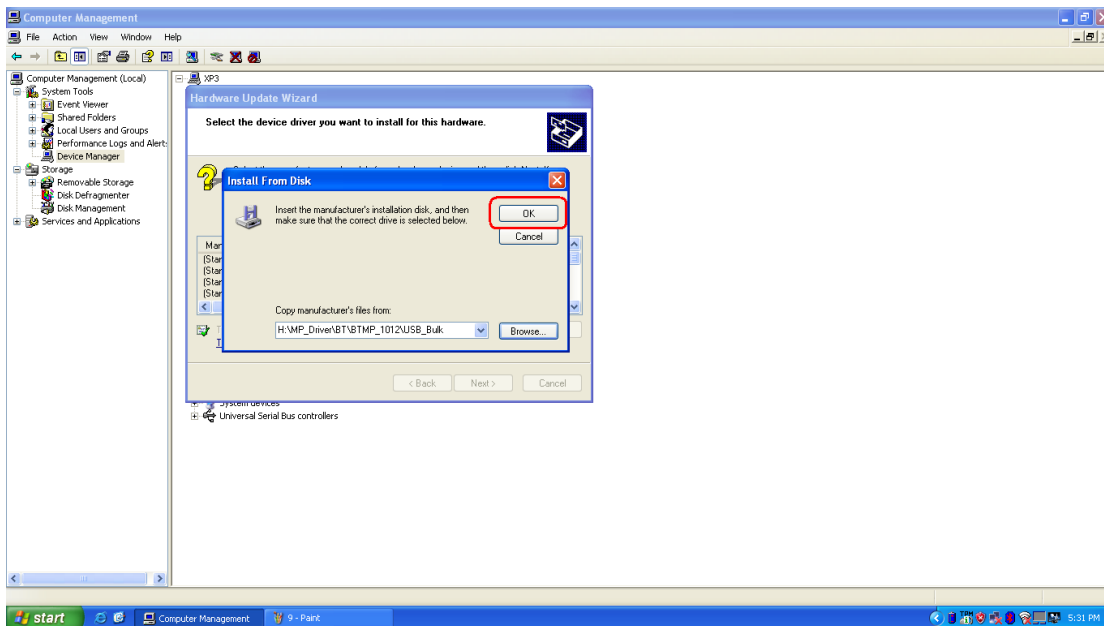
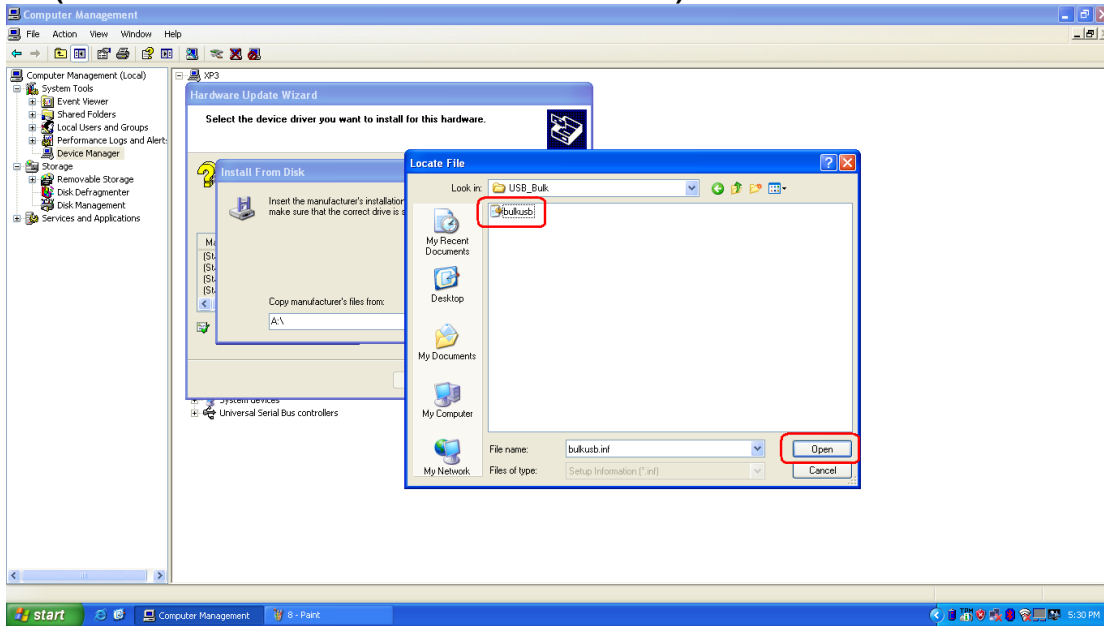
**F. Finish step “E” then select “Don’t search, I will choose the driver to install” and press Next button.**

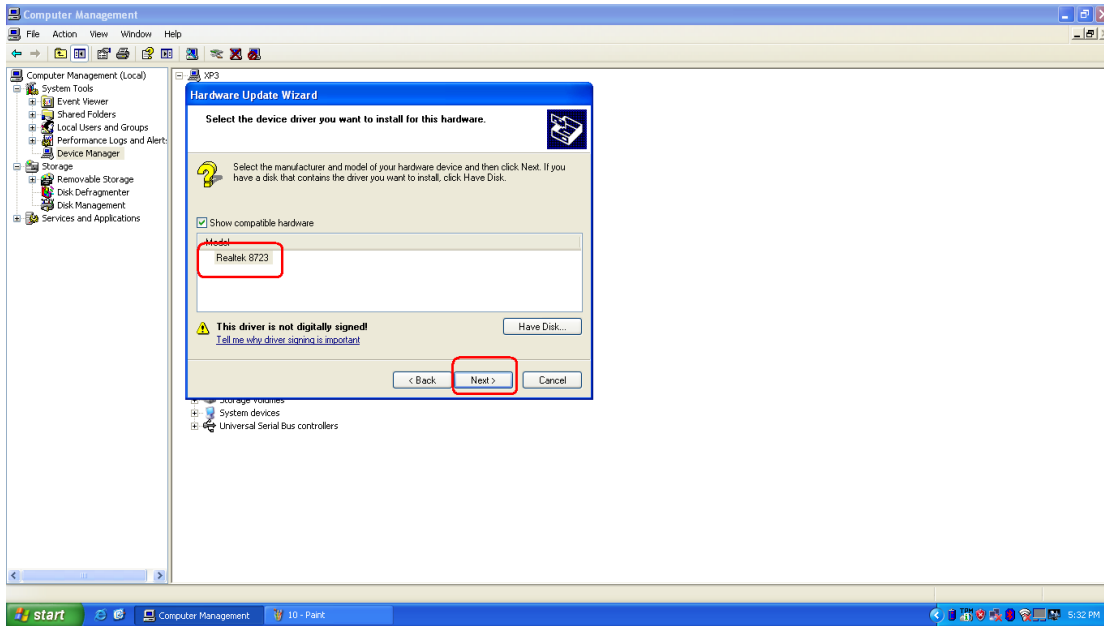


**G. Finish step “F” then we have to choose Hardware type, please choose “Show All Devices” and press Next button.**

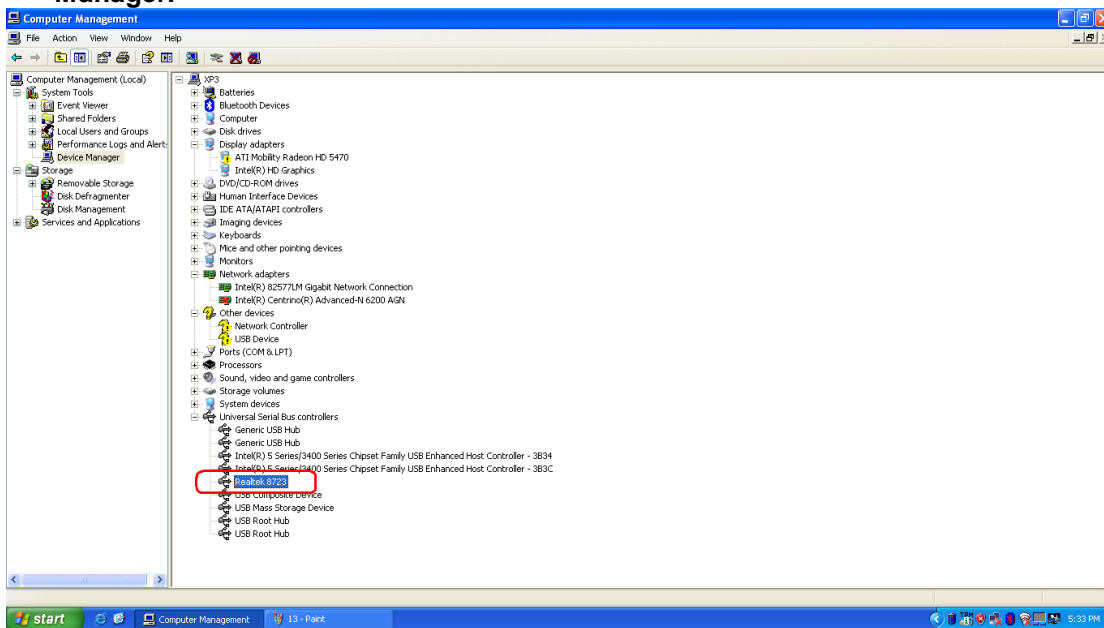


**H. Now select browse to find the driver for device.  
(The driver's locate is the same with WiFi driver)**





**I. Press Finish button to complete the install process and you can see the Driver will be show up in Device Manager.**



---

**Realtek Semiconductor Corp.**  
**Headquarters**  
No. 2, Innovation Road II, Hsinchu Science Park,  
Hsinchu, 300, Taiwan, R.O.C.  
Tel: 886-3-5780211 Fax: 886-3-5776047  
www.realtek.com.tw