



(Realtek RTL8812BU)  
USB Module User's Manual

Preliminary Version

19/07/2017



**Realtek Semiconductor Corp.**

No. 2, Innovation Road II, Hsinchu Science Park, Hsinchu 300, Taiwan

Tel.: +886-3-578-0211. Fax: +886-3-577-6047

[www.realtek.com](http://www.realtek.com)

---

**CONTENT**

<b>ENVIRONMENTAL</b> .....	<b>3</b>
OPERATING .....	3
STORAGE.....	3
MTBF CALCULATION .....	3
<b>WARNING</b> .....	<b>3</b>
Federal Communication Commission Interference Statement .....	3
INDUSTRY CANADA STATEMENT .....	5
<b>NCC 警語</b> .....	<b>6</b>

## ENVIRONMENTAL

### Operating

Operating Temperature: 0°C to +70 °C  
Relative Humidity: 5-90% (non-condensing)

### Storage

Temperature: -40°C to +80°C (non-operating)  
Relevant Humidity: 5-95% (non-condensing)

### MTBF caculation

Over 150,000hours

## Warning

### Federal Communication Commission Interference Statement

This equipment has been tested and found to comply with the limits for a Class B digital device, pursuant to Part 15 of the FCC Rules. These limits are designed to provide reasonable protection against harmful interference in a residential installation. This equipment generates, uses and can radiate radio frequency energy and, if not installed and used in accordance with the instructions, may cause harmful interference to radio communications. However, there is no guarantee that interference will not occur in a particular installation. If this equipment does cause harmful interference to radio or television reception, which can be determined by turning the equipment off and on, the user is encouraged to try to correct the interference by one of the following measures:

- Reorient or relocate the receiving antenna.
- Increase the separation between the equipment and receiver.
- Connect the equipment into an outlet on a circuit different from that to which the receiver is connected.
- Consult the dealer or an experienced radio/TV technician for help.

This device complies with Part 15 of the FCC Rules. Operation is subject to the following two conditions: (1) This device may not cause harmful interference, and (2) this device must accept any interference received, including interference that may cause undesired operation.

**FCC Caution:** Any changes or modifications not expressly approved by the party responsible for compliance could void the user's authority to operate this equipment.

### **IMPORTANT NOTE:**

#### **FCC Radiation Exposure Statement:**

This equipment complies with FCC radiation exposure limits set forth for an uncontrolled environment. This equipment should be installed and operated with minimum distance 20cm between the radiator & your body.

IEEE 802.11b or 802.11g operation of this product in the U.S.A. is firmware-limited to channels 1 through 11.

#### **This device is intended only for OEM integrators under the following conditions:**

- 1) The antenna must be installed such that 20 cm is maintained between the antenna and users, and
- 2) This device and its antenna(s) must not be co-located with any other transmitters except in accordance with FCC multi-transmitter product procedures. Referring to the multi-transmitter policy, multiple-transmitter(s) and module(s) can be operated simultaneously without C2P.
- 3) For all products market in US, OEM has to limit the operation channels in CH1 to CH11 for 2.4G band by supplied firmware programming tool. OEM shall not supply any tool or info to the end-user regarding to Regulatory Domain change.

### **USERS MANUAL OF THE END PRODUCT:**

In the users manual of the end product, the end user has to be informed to keep at least 20cm separation with the antenna while this end product is installed and operated. The end user has to be informed that the FCC radio-frequency exposure guidelines for an uncontrolled environment can be satisfied. The end user has to also be informed that any changes or modifications not expressly approved by the manufacturer could void the user's authority to operate this equipment. If the size of the end product is smaller than 8x10cm, then additional FCC part 15.19 statement is required to be available in the users manual: This device complies with Part 15 of FCC rules. Operation is subject to the following two conditions: (1) this device may not cause harmful interference and (2) this device must accept any interference received, including interference that may cause undesired operation.

### **LABEL OF THE END PRODUCT:**

The final end product must be labeled in a visible area with the following " Contains TX2-RTL8812BU ". If the size of the end product is larger than 8x10cm, then the following FCC part 15.19 statement has to also be available on the label: This device complies with Part 15 of FCC rules. Operation is subject to the following two conditions: (1) this device may not cause harmful interference and (2) this device must accept any interference received, including interference that may cause undesired operation.

### **Manual Information To the End User**

This module is intended for OEM integrator. The OEM integrator is responsible for the compliance to all the rules that apply to the product into which this certified RF module is integrated.

Additional testing and certification may be necessary when multiple modules are used.

## NCC 警語

根據 NCC 低功率電波輻射性電機管理辦法 規定:

第十二條 經型式認證合格之低功率射頻電機，非經許可，公司、商號或使用者均不得擅自變更頻率、加大功率或變更原設計之特性及功能。

第十四條 低功率射頻電機之使用不得影響飛航安全及干擾合法通信；經發現有干擾現象時，應立即停用，並改善至無干擾時方得繼續使用。前項合法通信，指依電信法規定作業之無線電通信。低功率射頻電機須忍受合法通信或工業、科學及醫療用電波輻射性電機設備之干擾。

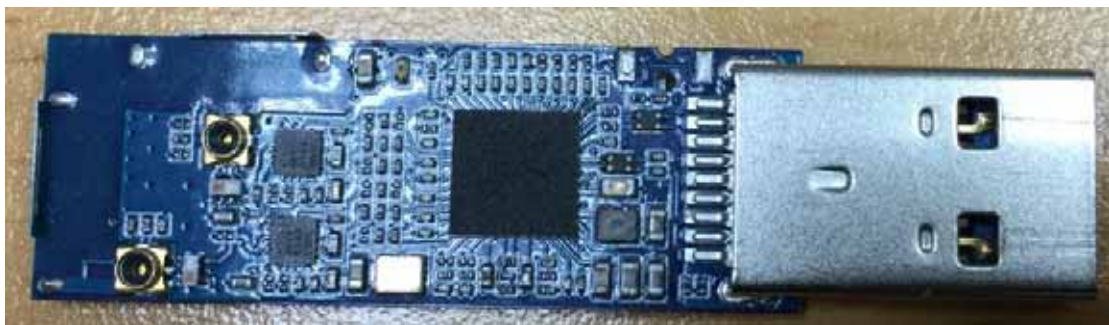
為避免影響附近雷達系統之操作。

高增益指向性天現只得應用於固定式點對點系統。

此模組於取得認證後將依規定於模組本體標示審合格籤，並要求平台廠商於平台上標示「本產品內含射頻模組：ID編號。

## Installing the Wireless USB module module Hardware

Installing USB module to USB connector





## Un-installing the Wireless USB module Hardware

Remove the Wireless USB module board from USB connector port.

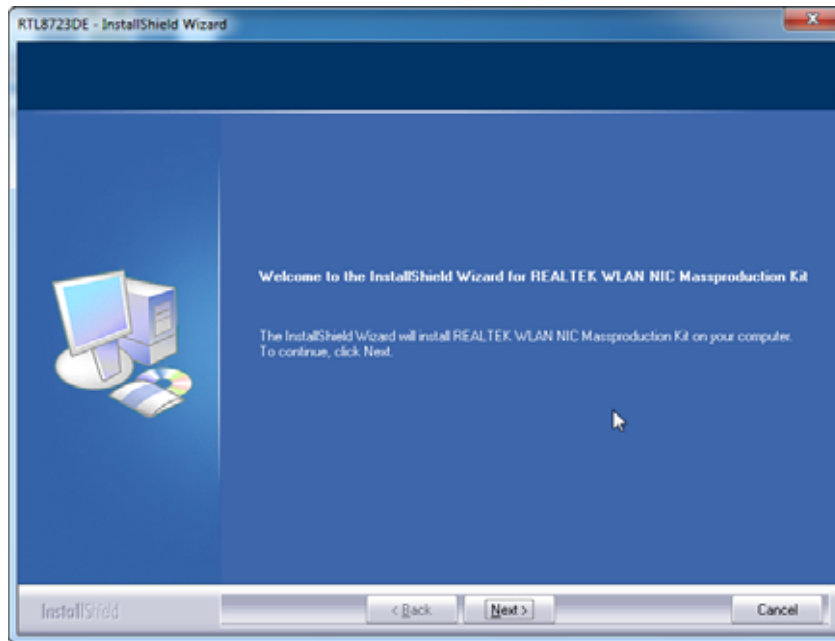
## Installing the Wireless USB module Software

Before you proceed with the installation, please notice following descriptions.

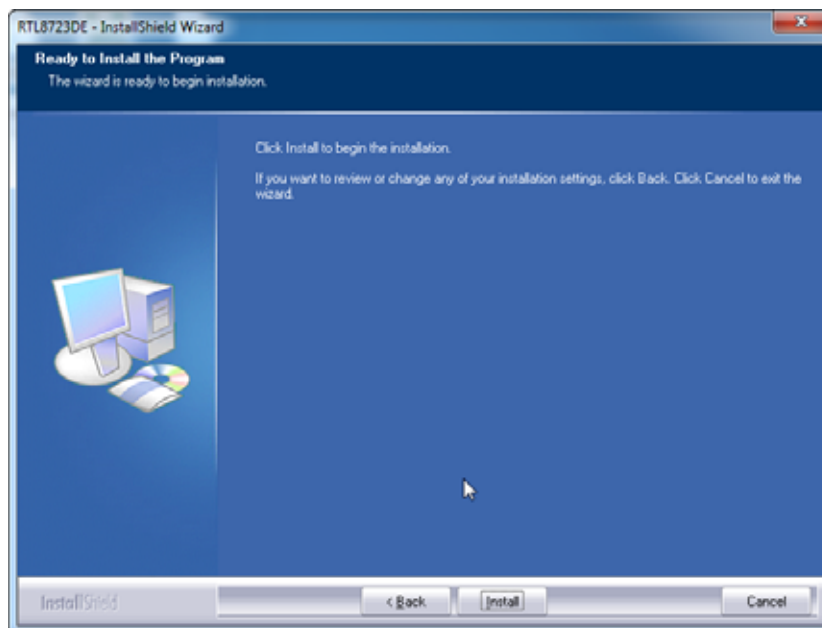
**Note1: The following installation was operated under Windows 7.**

**Note2: If you have installed the WLAN driver & utility before, please uninstall the old version first.**

A. Execute the "setup.exe", Click "Next" to process the installation

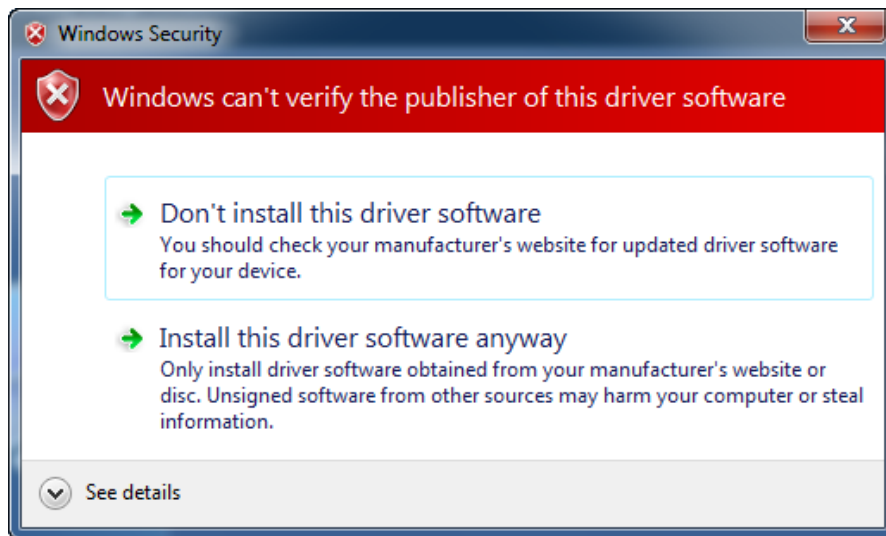


B. Click "Install" to process the installation

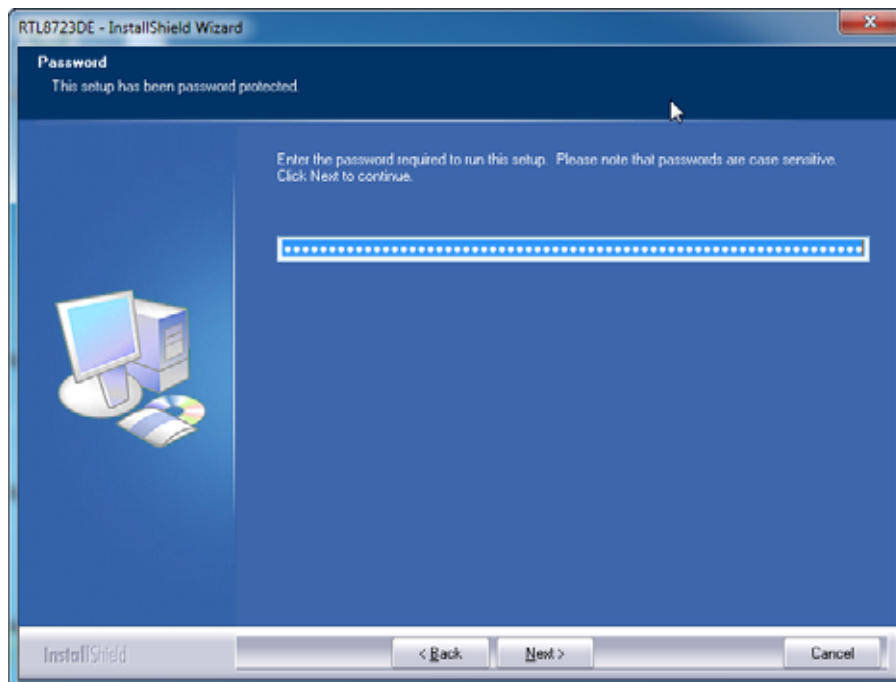


C. Click Install this driver software anyway

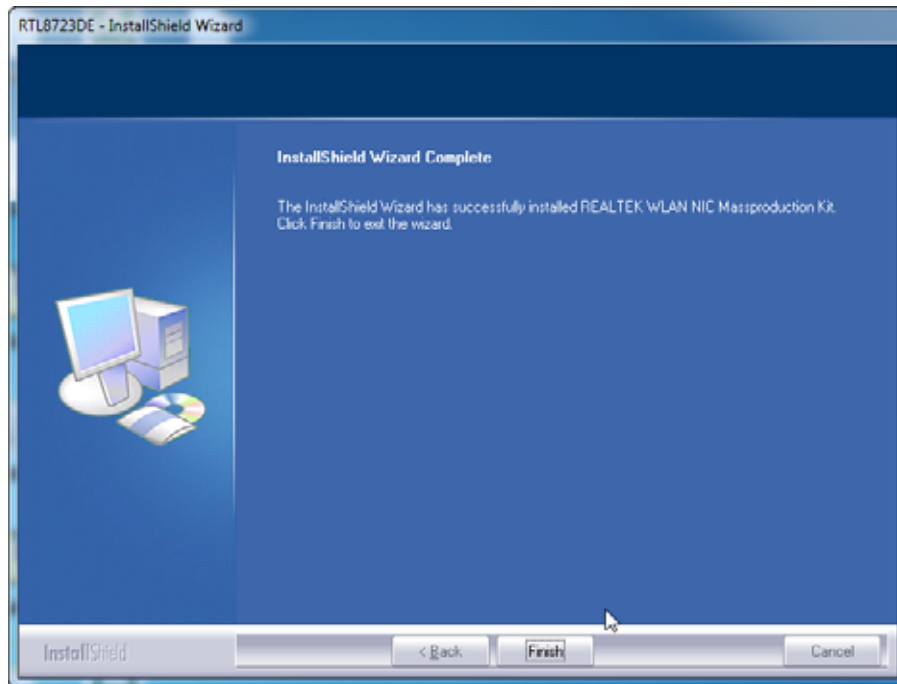




D. After step "C" please press Next button.

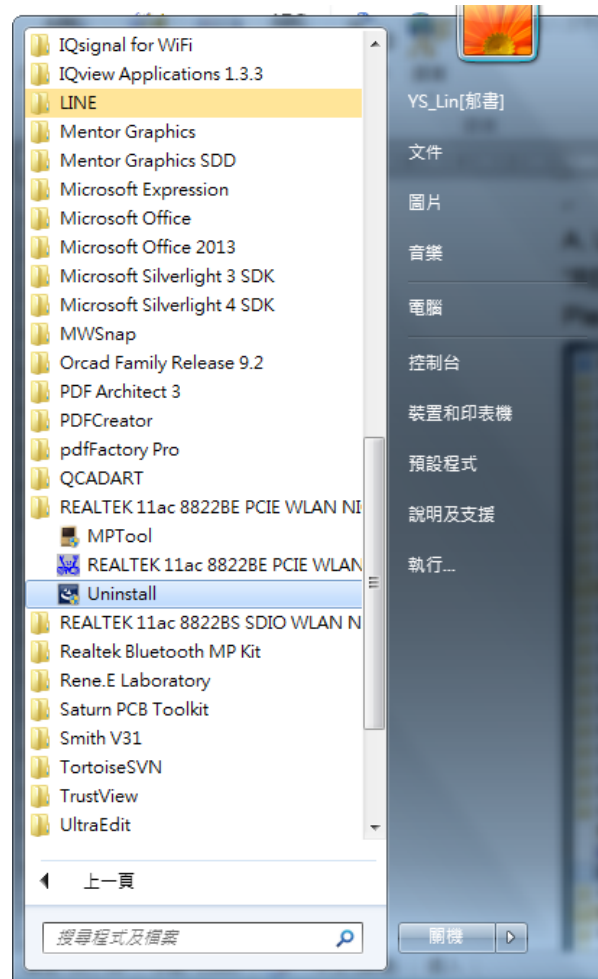


E. Press Finish button to complete the install process



## Un-installing the Wireless USB module Software

A. Uninstall the RTL8812BU WLAN Driver from “Start”→ “All Programs”→ Please click “Uninstall” to remove RTL8812BU WLAN driver.



REALTEK RTL8812BU can only be used with the following specific host:

<b>MB/NB/add-in card model name</b>	<b>OS</b>	<b>USB Host</b>
Acer-Aspire VN7 719G-55MB(NB)	WIN8.1	Intel USB3.0
ASUS-( P7H55-M/USB3 )	WIN7	NEC USB3.0
ASUS-(M5A87) (PC)	WIN7	Asmedia USB3.0
ASUS(NB)-(U36J)	WIN7	Fresco USB3.0
ASUS-(P8Z77-V LX)	WIN7	Intel USB3.0
DELL Vostro 270S (PC)	WIN7	Intel USB3.0
GIGABYTE-(GA-880GMA-UD2H)	WIN7	NEC USB3.0
GIGABYTE-(GA-F2A85X-UP4)	WIN7	AMD USB3.0
GIGABYTE-(GA-H61M-USB3(B3))	WIN7	ETRON USB3.0
HP 14-R017TU(NB)	WIN8	Intel USB3.0
Lenovo T430(NB)	WIN7	Intel USB3.0
MSI-(H67MA-E35(B3))	WIN7	NEC USB3.0
TOSHIBA(NB)-(R830)	WIN7	Renesas USB3.0
TOSHIBA(NB)-(R930)	WIN7	Intel USB3.0
UTB222	WIN7	Renesas USB3.0
UTB242	WIN7	TI USB3.0
UTB245	WIN7	Fresco USB3.0
VLI-805 add-in card	WIN7	VLI USB3.0