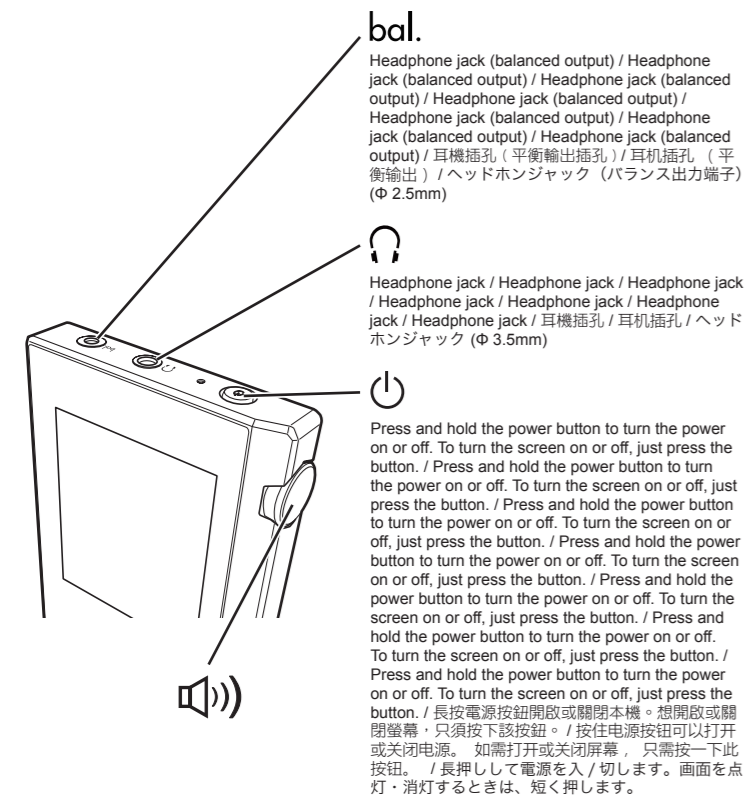
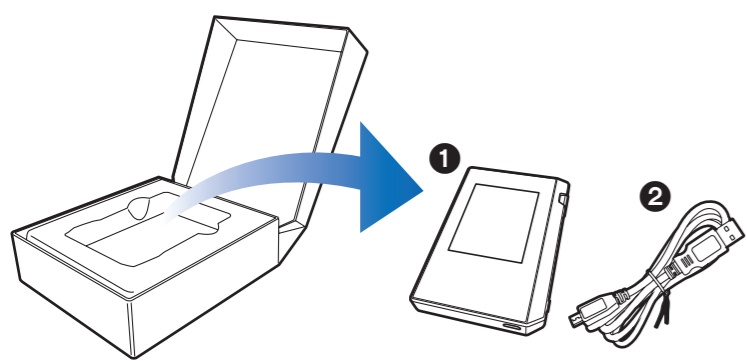


# Quick Start Guide

Quick Start Guide / Quick Start Guide / Quick Start Guide / Quick Start Guide / Quick Start Guide / Quick Start Guide / 快速入門指南 / 快速入门指南 / クイックスタートガイド

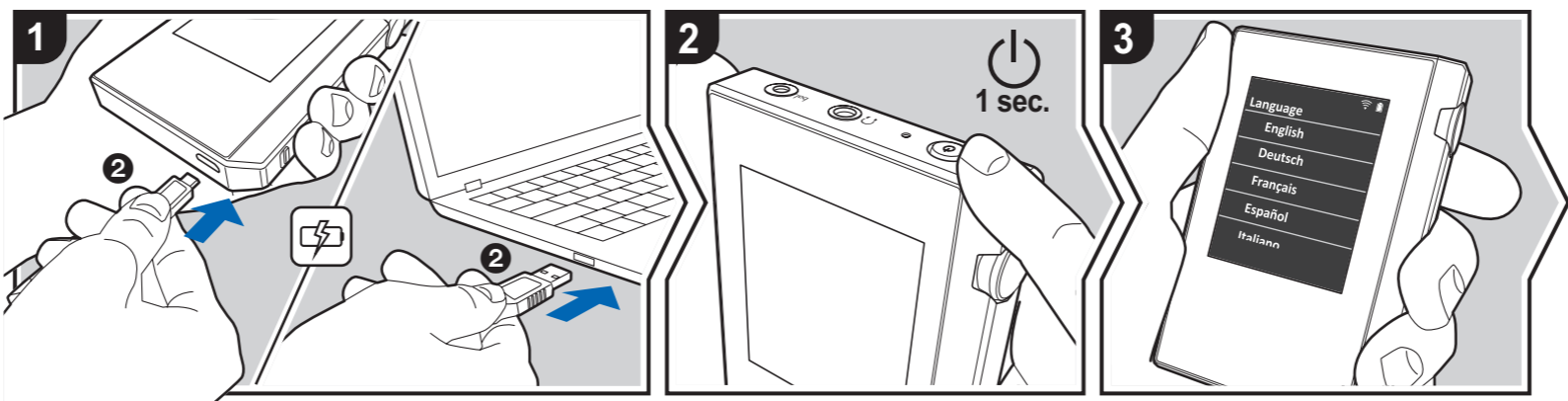
Digital Audio Player / Lecteur audio numérique / Цифровой аудиоплеер

## XDP-30R



# 1. Making initial settings

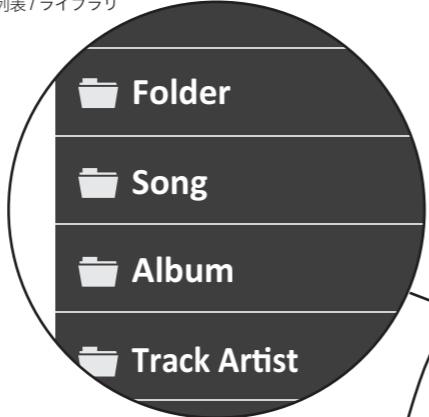
Making initial settings / Making initial settings / Making initial settings / Making initial settings / Making initial settings / Making initial settings / 進行初始設定 / 进行初始设置 / 初期設定をする



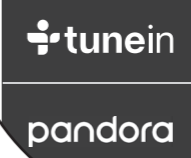
**1 - 3**  
**EN :** The battery is not charged at the time of purchase. Charge it before use. Turn on the unit, and follow the instructions on the screen to make settings. / **FR :** The battery is not charged at the time of purchase. Charge it before use. Turn on the unit, and follow the instructions on the screen to make settings. / **ES :** The battery is not charged at the time of purchase. Charge it before use. Turn on the unit, and follow the instructions on the screen to make settings. / **IT :** The battery is not charged at the time of purchase. Charge it before use. Turn on the unit, and follow the instructions on the screen to make settings. / **DE :** The battery is not charged at the time of purchase. Charge it before use. Turn on the unit, and follow the instructions on the screen to make settings. / **SV :** The battery is not charged at the time of purchase. Charge it before use. Turn on the unit, and follow the instructions on the screen to make settings. / **RU :** The battery is not charged at the time of purchase. Charge it before use. Turn on the unit, and follow the instructions on the screen to make settings. / **繁中 :** 購買產品時，電池尚未充電。使用產品前，來充電。打開本機，然後按照屏幕上的說明進行設置。 / **簡中 :** 在购买时，电池没有充电。使用前，充电。打开本机，然后按照屏幕上的说明进行设置。 / **JP :** お買い上げ時、バッテリーは充電されていませんので、はじめに充電してください。本機の電源を入れ、画面の指示に従って設定をしてください。

### Library

Library / Library / Library / Library / Library / Library / 體裁的音樂列表 / 体裁的音乐列表 / ライブラリ



### Streaming Services



### Settings

Make various settings of this unit such as Wi - Fi and Bluetooth settings. / Make various settings of this unit such as Wi - Fi and Bluetooth settings. / Make various settings of this unit such as Wi - Fi and Bluetooth settings. / Make various settings of this unit such as Wi - Fi and Bluetooth settings. / Make various settings of this unit such as Wi - Fi and Bluetooth settings. / 進行本機各種設置，如 Wifi 和藍牙設置。 / 进行本机的各种设置，如 Wifi 和蓝牙设置。 / Wi-Fi や Bluetooth の設定など本機のさまざまな設定を行うことができます。

### Audio Adjust

Make various settings to enjoy your favorite sound quality. / Make various settings to enjoy your favorite sound quality. / Make various settings to enjoy your favorite sound quality. / Make various settings to enjoy your favorite sound quality. / Make various settings to enjoy your favorite sound quality. / 您可以進行各種設置，享受您所選擇的音質。 / 您可以进行各种设置，享受您所选择的音质。 / お好みの音質を楽しむための各種設定を行うことができます。

### Bluetooth

ON / OFF

### Wi-Fi

ON / OFF

### Line Out

ON / OFF

### Balanced / A.C.G.

When balanced headphones are connected, you can select the headphone output mode. / When balanced headphones are connected, you can select the headphone output mode. / When balanced headphones are connected, you can select the headphone output mode. / When balanced headphones are connected, you can select the headphone output mode. / When balanced headphones are connected, you can select the headphone output mode. / 当您连接平衡式耳机，可以选择耳机输出。 / 当您连接平衡式耳机，可以选择耳机输出。 / バランスタイプのヘッドホンを接続したときのヘッドホン出力モードを選択できます。

### Instruction Manual found here

Le mode d'emploi se trouve ici / El Manual de instrucciones lo puede encontrar aquí / Il Manuale delle istruzioni si trova all'indirizzo / Die Bedienungsanleitung finden Sie hier / Instruction Manual found here / Здесь находится руководство по эксплуатации / 使用手冊在這裡 / 使用手冊在这里 / 取扱説明書はこちら



<http://www.pioneer-audiovisual.com/manual/XXXXXXXXXX.pdf>



