



iBobber™
Castable + Bluetooth + Fishfinder

Product Information Guide





PRODUCT INFORMATION GUIDE

Welcome to iBobber™. This guide will show you how to use the iBobber to make fishing more fun than it's ever been.

Please read this guide completely before using iBobber, and retain this guide for future reference. Follow all instructions. For a downloadable pdf version of this guide, please go to ReelSonar.com.

INCLUDED IN PACKAGE

- iBobber
- USB Charger
- Carry Pouch
- iBobber App Redemption Instructions

If you have any questions, or any items are damaged or missing, please email info@reelsonar.com.



Table of Contents

- 3 App Redemption
- 4 Charging the iBobber
- 6 Quick Overview
- 9 Settings
- 10 Personal
- 11 Syncing iBobber
- 14 Home
- 15 Sonar
- 16 Waterbed Mapping
- 18 Weather
- 19 Calendar
- 20 Trip Log / GPS Tag
- 22 Sonar Status Dashboard
- 23 Troubleshooting
- 25 Firmware Update
- 26 Warranty
- 27 Important Safety and Care Information
- 29 All Other Important Stuff



iBobber™ Fishfinder

App Redemption

The iBobber is available for, and syncs with iPhone 4S, 5, 5C, 5S, iPad 2, 3, Mini and Air.

Note: iBobber is not currently available for Android phones and tablets.



iPhone / iPad:

From your desktop or iOS device, go to the Apple App store and search for iBobber or ReelSonar. Once you've found it, download and install the iBobber App.

Install the app on to your iOS device, and launch the app.



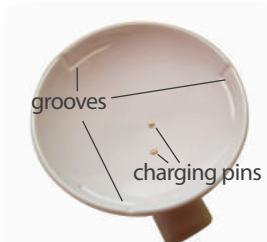
iBobber™ Fishfinder

Charging the iBobber (1 of 2)

Before you first use the iBobber you'll need to charge it. It's very simple — just align the "bumps" on the white side of the iBobber (image 1) with the grooves in the charger cradle (image 2). Go to page 5.



(image 1)

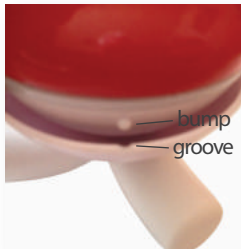


(image 2)



Charging the iBobber (2 of 2)

Gently push down the bobber into the charger (image 3) and gently twist the bobber clockwise so the "bumps" slide horizontally through the grooves. Plug the charging cable into your computer USB port, or using a USB adapter into a standard household outlet (U.S.) and charging will start, indicated by a blue light along the circumference of the iBobber (image 4). The light will remain on until fully charged, and then will flash indicating a full charge. Note: When fully charged, the iBobber turns on when disconnected from the charger and remains on for 10 minutes. This is for when you need to update the firmware (page 25). Please check for firmware update through the App when initially charging the iBobber, and update if necessary.



(image 3)

- bumps enter grooves
- push down gently
- gently twist clockwise to lock
- unlock gently twist counter clockwise

blue light = charging



(image 4)



Quick Overview • iBobber App Dashboards / Screens

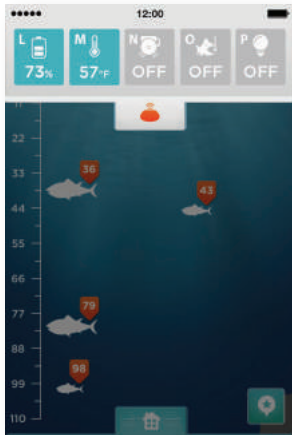


- A - Active Indicator (current screen)
- B - Sonar Screen Icon • Tap for Sonar
- C - Sonar Status & iBobber Status / Orange means iBobber is active, Tap for iBobber status
- D - Waterbed Mapping Icon • Tap for Waterbed
- E - Home Dashboard
- F - Sonar Screen
- G - Waterbed
- H - Weather
- I - Calendar
- J - Settings
- K - Trip Log



iBobber™ Fishfinder

Quick Overview • iBobber App Dashboards / Screens



- L** - iBobber Battery
- M** - Water Temperature
- N** - Fish Alarm (off/on)
- O** - Strike Alarm (off/on/adjustable)
- P** - iBobber LED Light (off/on)



iBobber™ Fishfinder

Quick Overview • iBobber App Dashboards / Screens

Home

This is the first screen you'll see. And before you can use iBobber you'll need to register it.

If you've avoided the initial Registration Screen, tap "Settings."

More on Home Screen and features to follow.

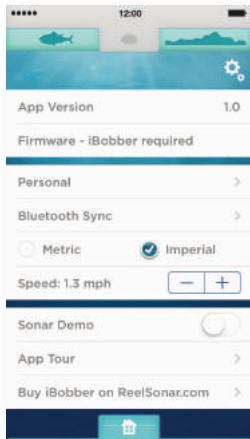


(image 5)



Settings

This is the first screen of Settings, and the only one you need to register. Choose your measurement preference (tap a circle): Imperial in the U.S., Metric in the rest of the world. Now tap Personal.

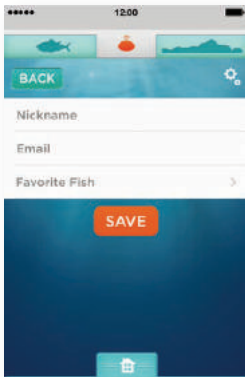


(image 6)

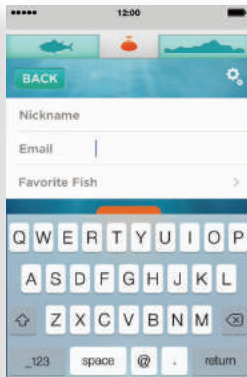


Personal

Tap the nickname field and a keyboard will open (image 8). Input a nick name by which you'd like your bobber to be known, then touch email and enter your email address (image 8). Tap "Favorite Fish" and tag all your favorite fish (image 8). Tap Save and you're registered. Now tap "Back" button.



(image 7)



(image 8)



Syncing iBobber (1 of 3)

On the settings screen is where you sync your iOS device and the iBobber. The iBobber turns on when it's in the water, so you'll want to be prepared to fish when you sync it. Here's what you'll need to do when you're ready to use the iBobber.

1) Attach the iBobber to your fishing line by attaching your line through the higher of the two attachment points. We suggest you use a swivel and make sure it's locked so the iBobber doesn't become separated from the line. The lower attachment point is used to attach a lure when fishing for small pan fish.



(image 9)

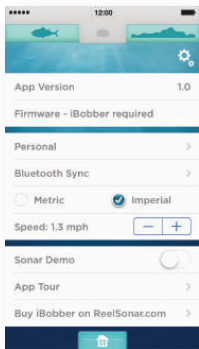
2) Place the iBobber into the water nearby. The water will activate the iBobber, turning it on. You're now ready to sync. Go to page 12.



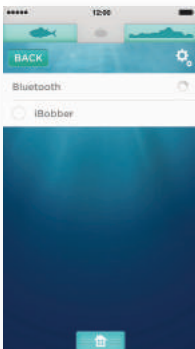
Syncing iBobber (2 of 3)

3) Tap Bluetooth Sync (image 10).

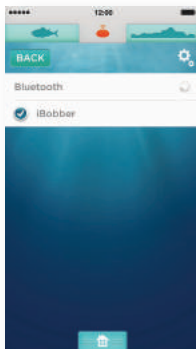
4) The iBobber will appear on your device, listed by its nickname. Tap the circle next to your iBobber nickname (image 11). When the connection is made, the Sonar icon in the top navigation between the fish and waterbed silhouettes will turn orange (image 12). You're now ready to find fish up to 100' away. Note: Bluetooth ball continues to spin.



(image 10)



(image 11)



(image 12)



Syncing iBobber (3 of 3)

Note 1:

The first time you use the iBobber you'll pair the iBobber (nickname) with your phone. If you and a bunch of friends are syncing for the first time, you'll need to do it separately — cast yours into the water, sync, then your pal casts his, syncs, then another friend cast his, etc.

After your first sync, your iBobber/app remembers your nickname so activating the iBobbers together is not an issue.

Note 2:

While your phone will remember your iBobber, and your friends phone will remember his iBobber, if you're out and forget your phone, or vice versa, you can connect with your friends iBobber, or his with yours. However, when connected to his, you won't be able to connect with his, etc. Only one iBobber connects at a time to a device.

Note 3:

When fully charged, the iBobber turns on when disconnected from the charger and remains on for 10 minutes. This is for when you need need to update the firmware (page 25)



Home

This is your control center.

Open it by tapping Home icon (little house).

Tap again and the home screen will close.

From here you'll access:
Sonar, Weather, Settings,
Waterbed Mapping, Calendar,



(image 13)



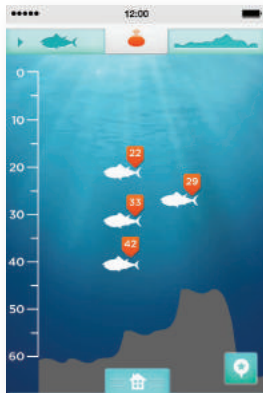
Sonar

Tap the Sonar icon to get to the Sonar screen. Fish are tagged with their depth, and a depth gauge is on the left.

The bottom of the screen reflects the waterbed contour.

Note: Where you are in the app, Sonar, is indicated by the green fish in the left / top navigation, with an arrow indicating to it.

Note: the GPS Tag in the lower right of the screen. Tap to log your GPS position and send it to the trip log.



(image 14)

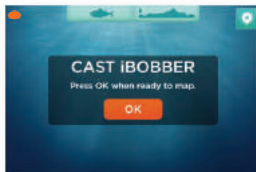


Waterbed Mapping (1 of 2)

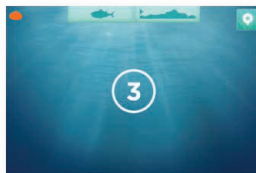
Tap either Waterbed Mapping Icon on the Home Screen or if you're on the Sonar Screen, tap the Waterbed silhouette (right / top navigation).

Note: when you're in Waterbed Mapping a green arrow points to the Waterbed Silhouette (image 15).

Once in Waterbed Mapping, the CAST iBOBBER screen appears (image 15) and you'll cast the iBobber up to 100' away. When you're ready to map the waterbed contour between the iBobber and you, tap OK (image 15). A count to three appears (image 16) to finalize preparation. Go to page 17.



(image 15)



(image 16)



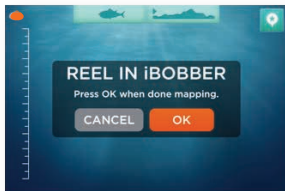
Waterbed Mapping (2 of 2)

Once the count ends, the Screen changes to REEL IN iBOBBER. Reel in the iBobber, slow and steady — you're now mapping the waterbed contour.

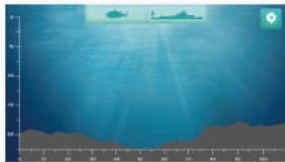
When you're done, tap OK (image 17).

A map of the waterbed contour will now appear with a depth gauge on the left, and a distance measurement along the bottom (image 18).

Note: GPS Tag button in the upper right. Tap to log your GPS position, and send it to the trip log.



(image 17)



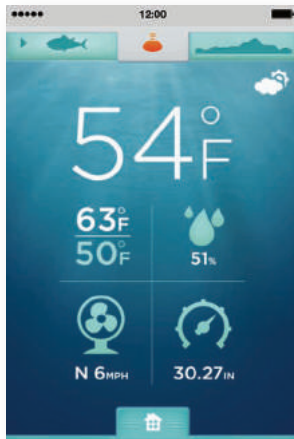
(image 18)



Weather

Tap either Weather icon on the Home Screen, or from Water bed Mapping tap the Sonar icon (green fish / top navigation) then tap Home (little house), then tap Weather icon.

You'll see the Weather — Current Temperature, Daily High/Low, Precipitation %, Wind Speed/Direction, Barometric Pressure.



(image 19)



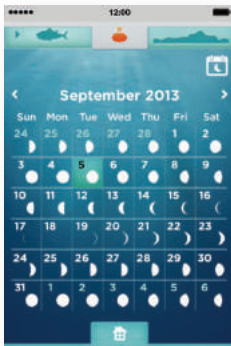
Calendar

Tap either Calendar icon on the Home Screen, or from Waterbed Mapping tap Sonar (green fish).

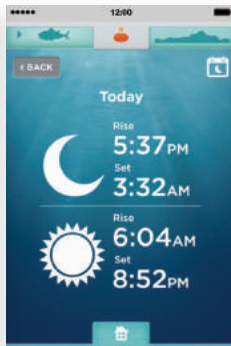
Then tap Home icon, then tap Weather icon.

You'll see the Calendar and Moon phases by month (image 20).

Tap today's date to see Moon Rise, Moon Set and Sun Rise and Sunset (image 21).



(image 20)

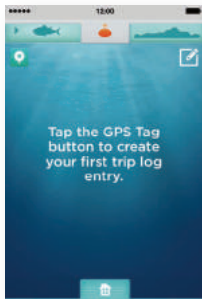


(image 21)

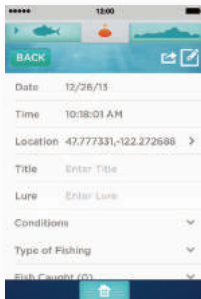


Trip Log / GPS Tag (1 of 2)

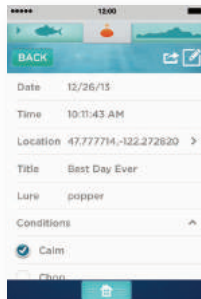
Tap either the Trip Log icon on the Home Screen, or from Waterbed Mapping tap Sonar (green fish). Then tap Home icon, then tap the Trip Log icon. You'll see the Trip Log (image 22). If you've tapped a GPS Tag on any screen, Date, Time, and Location will have auto-filled (image 23). If not, to Log a location/trip, tap the GPS icon just below the Sonar icon on the top left of the screen (image 22). Now, touch the Title field and a keyboard will open. Enter the title of your adventure and the rest of the fields, tapping one at a time to enter info you wish to save (images 23-24, and 25-26 on next page). Tap Done when finished. Go to page 21.



(image 22)



(image 23)



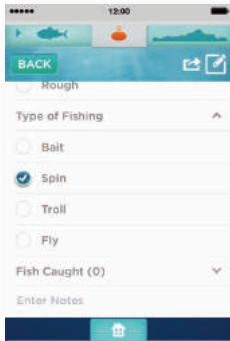
(image 24)



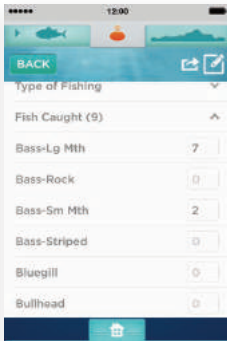
Trip Log / GPS Tag (2 of 2)

To Share via text, email, Twitter or Facebook (image 27), just tap the Share Arrow next to the trip log icon to share.

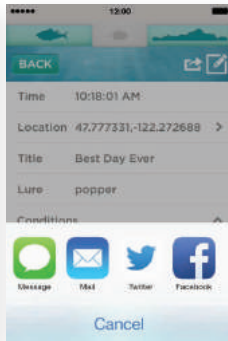
Note: Tap Location to open the map detail associated with your GPS Tag.



(image 25)



(image 26)



(image 27)

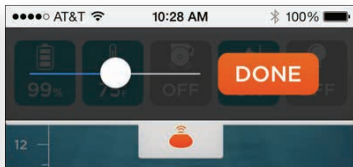


Sonar Status Dashboard

The Sonar status icon doubles as the access for the iBobber Status. Tap the Sonar icon and the dashboard opens to reveal (from L to R) iBobber Battery Indicator, Water Temperature, Sonar Fish Alarm (tap to turn on/off), Strike Alarm (tap to turn on/off. Double tap to adjust sensitivity), and iBobber light (tap to turn on/off). Tap the Sonar icon again, and the dashboard closes.



(image 28)



(image 29)



Troubleshooting (1 of 2)

Q-1: Trouble Syncing to iBobber?

A-1: First, the iBobber may simply be powered off. It automatically powers on when it connects with water. Note: When fully charged, the iBobber turns on when disconnected from the charger and remains on for 10 minutes. This is for when you need need to update firmware (page 25). Cast the iBobber into the water you're fishing, or immerse it in any other water (glass, sink, bathtub) and the iBobber sync should be visible in Settings > Bluetooth Sync >.

A-2: The battery in the iBobber may be low. Recharge the iBobber in the USB charger. Wait until it the iBobber is charged and you can return to syncing the iBobber.

A-3: The iBobber may not sync with your mobile device or tablet because of a Bluetooth issue with your device. Completely shut off and restart your device. This will clear the Bluetooth cache and should allow iBobber to connect. You may need to do this a few times.

A-4: The iBobber may be too far from your mobile device (more than 100') or waves might be periodically blocking the Bluetooth signal, or there may be obstructions in the way of the signal. Try reducing the distance or remove the obstructions and you should be able to sync.



Troubleshooting (2 of 2)

Q-2: Intermittent sonar view?

A-1: You may be reeling in the iBobber at too great a speed, causing it to "jump" on top of the water. Slow down the reeling of the iBobber. 1.3mph is recommended.

A-2: The iBobber may be too far from your mobile device (more than 100') or waves might be periodically blocking the Bluetooth signal, or there may be obstructions in the way of the signal. Try reducing the distance or remove the obstructions and you should be able to sync.

Q-3: Error Message accessing Calendar or Weather - Turn on iBobber Location Service to allow us to determine your location.

A: The app requires a connection to the internet to fully operate. In your mobile device settings, just enable location services for the iBobber as well as cellular service. If this is not a solution, you may no longer be in the coverage zone of these services. Return to the coverage zone and try again.

Q: The Map is blank, displaying only my current and saved locations.

A: Please refer to the answer for Q-3.

Q: Not able to Share from the Trip Log.

A: Please refer to the answer for Q-3.



Firmware Update

Firmware updates provide improved performance for the iBobber. Here's how to update the firmware in the iBobber.

- 1)** Make sure you have the latest version of the iBobber App and that the iBobber is fully charged.
- 2)** Firmware updates require an internet connection. So make sure you have an active internet connection, either Wi-Fi or 3G/4G. And that cellular services for the iBobber is activated in your device settings.
- 3)** Wet the iBobber and open Settings in the app. Tap Bluetooth Sync and sync via bluetooth. Tap the Back button. If there's a green icon next to Firmware Update it means that a firmware update is available. To update tap the icon. The firmware update should begin automatically. Please follow instructions on the screen. The update should take less than 5 minutes, and once completed the iBobber is ready to find fish.



1-YEAR LIMITED WARRANTY

This iBobber, as supplied and distributed by ReelSonar, Inc., and delivered new, in the original carton to the original customer purchaser, is warranted by ReelSonar, Inc. against manufacturing defects in materials and workmanship for a period of 1 year. ReelSonar, Inc. will repair or replace this product, at our option and at no charge with new or reconditioned parts, if found to be defective during the limited warranty period specified above.

In the case of a manufacture or workmanship defect, please contact us at ReelSonar.com. If found to be a manufacture or workmanship defect you will be issued a Return Authorization (RA) number, and instructions for shipping. We do not accept returns without the RA number. Purchaser is responsible for shipping to us. We will pay for the shipping to you.



IMPORTANT SAFETY AND CARE (1 of 2)

- After use, wipe the iBobber and USB Charger with a clean, dry cloth and store dry in the pouch provided. The iBobber brass pins on the bottom must be rinsed with fresh water after exposure to salt water to prevent corrosion. Do not place the iBobber in a wet area or on a metal surface when not in use as water activates the iBobber. The iBobber could be activated without your knowledge, draining the battery.
- Keep the iBobber within acceptable temperatures. Operate and store where the temperature is 0°F and 125°F. Keep away from heat and flame sources such as heaters, stoves, radiators and other sources that generated heat or flames. Do not store the iBobber in temperatures above 125°F.
- iBobber should never be used as a navigational aid to prevent boat or water craft damage, grounding, or personal injury. Use as a navigational aid will void the warranty.
- To reduce the risk of damage or injury, and to keep warranty compliant, do not open the iBobber or the USB Charger. Never service the iBobber yourself.



IMPORTANT SAFETY AND CARE (2 of 2)

- Never abuse, puncture, or step on the iBobber. This can damage the exterior shell, compromise the waterproofness, render it inoperable, and void the warranty.
- Never place anything but the iBobber in the USB charger. Placing coins or metal into the charger could cause those objects to heat and burn on contact with skin.
- Never cast iBobber in dangerous, hazardous, or areas where fishing is not permitted. Never cast iBobber into rocks.
- Never use iBobber if the exterior shell has been compromised. Contact reelsonar.com.
- Always try to keep iBobber in sight when it's on the water. At night, use the built-in light to flash the iBobber location.
- Periodically examine iBobber for potential hazards such as a cracked or damaged exterior shell.



BATTERY WARNING

The iBobber contains a sealed, rechargeable Lithium Polymer battery. Lithium Polymer batteries are extremely hazardous and liable to cause serious injuries to persons or property. The user accepts liability for the use of a Lithium Polymer battery. As the manufacturer and the distributor cannot ensure the battery is used correctly (charging, discharging, storage, etc.), they cannot be held liable for damages caused to persons or property. In the event of battery leakage, avoid the liquid coming into contact with skin and eyes. In case of contact with the skin, wash copiously with soap and water. In case of contact with the eyes, rinse copiously with cold water and consult a doctor. If you notice a suspicious smell or noise or observe smoke around the iBobber or USB Charger, disconnect them immediately. Never clean the iBobber charging pins with a solvent, denatured alcohol, or other flammable solvents. Non-compliance with the instructions could result in gas being given off, fire, electric shock or an explosion.

BATTERY • iBOBBER DISPOSAL

Discarding iBobber and its batteries in your general household waste can be harmful to the environment. Damaged or unusable iBobbers must be disposed of in a container specially reserved for this purpose. When disposing of the iBobber/battery, follow appropriate local guidelines and regulations. For further information contact your local solid waste authority.



Software License

Use of iBobber is subject to the ReelSonar Software License Agreement found at: ReelSonar.com.

Exclusions and Limitations (1 of 2)

This warranty covers the normal and intended use of iBobber. It applies only to the hardware product "iBobber" manufactured by or for ReelSonar, Inc. that can be identified by the "ReelSonar" trademark, trade name or logo affixed to it. The Limited Warranty does not apply to any non-ReelSonar hardware product or any software, even if packaged or sold with the iBobber hardware product. Refer to the software license agreement accompanying the software for details of your rights with respect to its use. ReelSonar, Inc. does not warrant that the operation of iBobber will be uninterrupted or error-free. ReelSonar is not responsible for damage arising from failure to follow instructions relating to iBobber's use. This warranty does not apply to:

- a) consumable parts, such as batteries, or protective coatings designed to diminish over time unless failure has occurred due to a defect in materials or workmanship;
- b) damage caused by use with non-iBobber products;
- c) damage caused by accidents, misuse, abuse, neglect, misapplication, fire; lightning or other acts of nature; incorrect electrical line voltage, fluctuations or surges; damage caused by improper installation; product alteration or modification; improper or unauthorized repair; exterior finish or cosmetic damage;
- d) damage caused by operating iBobber outside the intended uses described by ReelSonar; (~defects caused by normal wear and tear or otherwise due to the normal aging of the iBobber product.



Exclusions and Limitations (2 of 2)

THERE ARE NO EXPRESS WARRANTIES OTHER THAN THOSE LISTED AND DESCRIBED ABOVE, AND NO WARRANTIES WHETHER EXPRESS OR IMPLIED, INCLUDING, BUT NOT LIMITED TO, ANY IMPLIED WARRANTIES OF MERCHANTABILITY OR FITNESS FOR A PARTICULAR PURPOSE AND WARRANTIES AGAINST HIDDEN OR LATENT DEFECTS, SHALL APPLY AFTER THE EXPRESS WARRANTY PERIOD STATED ABOVE, AND NO OTHER EXPRESS WARRANTY OR GUARANTEE GIVEN BY ANY PERSON, FIRM OR CORPORATION WITH RESPECT TO THIS PRODUCT SHALL BE BINDING ON REELSONAR, INC. EXCEPT AS PROVIDED IN THIS WARRANTY AND TO THE MAXIMUM EXTENT PERMITTED BY LAW, REELSONAR, INC. IS NOT RESPONSIBLE FOR LOSS OF REVENUE OR PROFITS, FAILURE TO REALIZE SAVINGS OR OTHER BENEFITS, LOSS OF OPPORTUNITY, LOSS OF GOODWILL, LOSS OF REPUTATION, LOSS OF, DAMAGE TO, COMPROMISE OR CORRUPTION OF DATA, OR ANY OTHER SPECIAL, INCIDENTAL OR CONSEQUENTIAL DAMAGES CAUSED BY THE USE, MISUSE OR INABILITY TO USE THIS PRODUCT, OR ANY BREACH OF ANY WARRANTY OR CONDITION REGARDLESS OF THE LEGAL THEORY ON WHICH THE CLAIM IS BASED, AND EVEN IF REELSONAR, INC. HAS BEEN ADVISED OF THE POSSIBILITY OF SUCH DAMAGES. NOR SHALL RECOVERY OF ANY KIND AGAINST REELSONAR, INC. BE GREATER IN AMOUNT THAN THE PURCHASE PRICE OF iBOBBER. WITHOUT LIMITING THE FOREGOING, PURCHASER ASSUMES ALL RISK AND LIABILITY FOR LOSS, DAMAGE OR INJURY TO PURCHASER AND PURCHASER'S PROPERTY AND TO OTHERS AND THEIR PROPERTY ARISING OUT OF THE USE, MISUSE OR INABILITY TO USE THIS PRODUCT SOLD BY REELSONAR, INC. NOT CAUSED DIRECTLY BY THE GROSS NEGLIGENCE OF REELSONAR, INC. THIS LIMITED WARRANTY IS NONTRANSFERABLE AND STATES YOUR EXCLUSIVE REMEDY.

Some states do not allow limitations on how long an implied warranty lasts, or the exclusion or limitation of incidental or consequential damages, so the above limitations or exclusions may not apply to you. This warranty gives you specific legal rights and you may also have other rights, which vary from state to state.



Governing law and Arbitration

This Limited Warranty shall be governed by the laws of the State of Washington without giving effect to any conflict of laws principles that may provide the application of the law of another jurisdiction. Any claim or dispute in connection with this Limited Warranty shall be resolved in a cost effective manner through binding non-appearance-based arbitration. The arbitration shall be initiated through an established alternative dispute resolution provider mutually agreed upon by the parties. The alternative dispute resolution provider and the parties must comply with the following rules;

a) the arbitration shall be conducted by telephone, online and/or be solely based on written submissions, the specific manner shall be chosen by the party initiating the arbitration; b) the arbitration shall not involve any personal appearance by the parties or witnesses unless otherwise mutually agreed by the parties; and c) any judgment on the award rendered by the arbitrator may be entered in any court of competent jurisdiction. If the foregoing arbitration clause does not apply for any reason, you agree to submit to the personal jurisdiction of the state courts located within King County, Washington and the federal courts in Seattle, Washington for the purpose of litigating all such claims or disputes, which courts shall have exclusive jurisdiction of such claims or disputes.

Notwithstanding the foregoing, ReelSonar, Inc. may seek injunctive or other equitable relief to protect its intellectual property rights in any court of competent jurisdiction.



Changes to this Product Information Guide

The explanations and specifications in this guide are given for information only and may be modified at any time without prior notice. The latest version of this guide will be available from our website at ReelSonar.com. The explanations and specifications contained in this guide are correct at the time of printing. ReelSonar, Inc. reserves the right to amend or improve the product design or user guide without any restrictions and without any obligation to notify users. As part of our ongoing effort to upgrade and improve our products, the product that you have purchased may therefore differ slightly from the model described in this guide.



End of Life Product Disposal

At end of life of iBobber and USB Charger, please do not dispose of these products in your general household waste. Instead, in order to prevent possible harm to the environment or human health from uncontrolled waste disposal, please dispose of this product separately in accordance with your local laws and regulation. For more information on the separate collection systems for waste electrical and electronic equipment that are available for consumers, near your home, free of charge, please contact your local municipality authority. You can also contact the retailer from which you purchased your iBobber - they might have put in place recycling services or they may be part of a specific recycling program.

Packaging

Please separate paper from plastic for recycling

PAPER RECYCLING



ONLY

iBobber & USB Charger

Please separate plastic from paper for recycling





FCC WARNINGS

Changes or modifications not expressly approved by the party responsible for compliance could void the user's authority to operate the equipment.

This equipment has been tested and found to comply with the limits for a Class B digital device, pursuant to Part 15 of the FCC Rules. These limits are designed to provide reasonable protection against harmful interference in a residential installation. This equipment generates uses and can radiate radio frequency energy and, if not installed and used in accordance with the instructions, may cause harmful interference to radio communications. However, there is no guarantee that interference will not occur in a particular installation. If this equipment does cause harmful interference to radio or television reception, which can be determined by turning the equipment off and on, the user is encouraged to try to correct the interference by one or more of the following measures:

- Reorient or relocate the receiving antenna.
- Increase the separation between the equipment and receiver.
- Connect the equipment into an outlet on a circuit different from that to which the receiver is connected.
- Consult the dealer or an experienced radio/TV technician for help.

FCC Radiation Exposure Statement

The antennas used for this transmitter must be installed to provide a separation distance of at least 20 cm from all persons and must be co-located for operating in conjunction with any other antenna or

Canada:

This device complies with Industry Canada licence-exempt RSS standard(s). Operation is subject to the following two conditions: (1) this device may not cause interference, and (2) this device must accept any interference, including interference that may cause undesired operation of the device.

Le présent appareil est conforme aux CNR d'Industrie Canada applicables aux appareils radio exempts de licence. L'exploitation est autorisée aux deux conditions suivantes : (1) l'appareil ne doit pas produire de brouillage, et (2) l'utilisateur de l'appareil doit accepter tout brouillage radioélectrique subi, même si le brouillage est susceptible d'en compromettre le fonctionnement.



iBobber™ Fishfinder

APPLE

"Syncs with iPhone," and "Syncs with iPad" means that iBobber and the iBobber app have been designed to connect specifically to iPhone, or iPad, respectively, and has been certified by the developer to meet Apple performance standards. Apple is not responsible for the operation of this device or its compliance with safety and regulatory standards. Please note that the use of this accessory with iPhone, or iPad may affect wireless performance. iPad, and iPhone are trademarks of Apple Inc., registered in the U.S. and other countries.



Bluetooth®

The Bluetooth word mark and logos are owned by the Bluetooth SIG, Inc. and any use of such marks by ReelSonar, Inc. is under license.

Android™

Android™ is a trademark of Google Inc. Use of this trademark is subject to Google Permissions. Not all devices compatible. Check at ReelSonar.com

Software

Your ReelSonar, Inc. product can connect with special ReelSonar copyrighted software to control its operation. Parts of this software may contain copyrighted elements that are licensed under the GPL, MIT, and Creative Commons licenses among others. Additionally, your ReelSonar, Inc. product contains proprietary firmware developed and copyrighted by ReelSonar, Inc.

Copyright

Copyright© 2013 ReelSonar, Inc. All Rights Reserved. Patents Pending.

iBobber™



iBobber™ is a trademark of ReelSonar, Inc.

©2013 ReelSonar, Inc. Seattle, WA
All rights reserved. Patents Pending

Customer Support • ReelSonar.com

Custom built in China. Designed by ReelSonar in Seattle.

"Syncs with iPhone," and "Syncs with iPad" means that iBobber and the iBobber app have been designed to connect specifically to iPhone, or iPad, respectively, and has been certified by the developer to meet Apple performance standards. Apple is not responsible for the operation of this device or its compliance with safety and regulatory standards. Please note that the use of this accessory with iPhone, or iPad may affect wireless performance. iPad, and iPhone are trademarks of Apple Inc., registered in the U.S. and other countries. The Bluetooth word mark and logos are owned by the Bluetooth SIG, Inc. and any use of such marks by ReelSonar, Inc. is under license. Android™ is a trademark of Google Inc. Use of this trademark is subject to GooglePermissions. Not all devices compatible. Check www.ReelSonar.com

MSRP \$99.99



IC: 11845A-IBOBBER
FCC ID: SGG-IBOBBER



6 99723 02101 2