

size:340x90mm 108g铜版纸



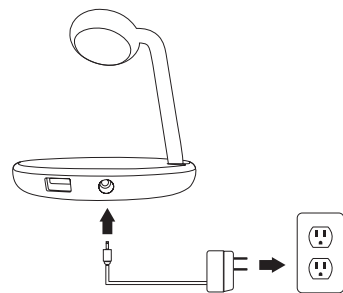
#### 1. What's included:

- Charging Stand
- AC/DC Power Adapter
- User Manual

#### 2. Operation:

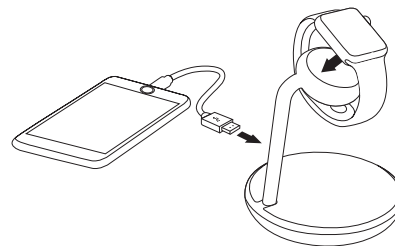
Step 1: Plug the included AC Power Adapter into a wall outlet.

Step 2: Plug the AC Power Adapter into the AC port on the back of the Watch Stand.



Step 3: Place the back of your Apple Watch onto the Intergraded Magnetic Charger on your Watch Stand.

Step 4 (optional): To charge your other mobile devices, connect its approved USB charging cable to the USB port on the back of your Charging Stand.



#### 3.Compatibility:

- Apple Watch Series 3
- Apple Watch Series 2
- Apple Watch Series 1
- Apple Watch ( 1st generation)

#### 4. Specifications:



- Apple MFi Certified – Made for Apple Watch
- Input: 100~240V; 50/60Hz
- Total Output: 5V / 3.0A
- Output 1 (module): 5V / 1A
- Output 2 (USB-A): 5V / 2.1A

This device complies with Part 15 of the FCC Rules.

Operation is subject to the following two conditions:

- (1) this device may not cause harmful interference, and
- (2) this device must accept any interference received, including interference that may cause undesired operation.

Warning: Changes or modifications to this unit not expressly approved by the party responsible for compliance could void the user's authority to operate the equipment.

NOTE: This equipment has been tested and found to comply with the limits for a Class B digital device, pursuant to Part 15 of the FCC Rules. These limits are designed to provide reasonable protection against harmful interference in a residential installation. This equipment generates, uses and can radiate radio frequency energy and, if not installed and used in accordance with the instructions, may cause harmful interference to radio communications.

However, there is no guarantee that interference will not occur in a particular installation. If this equipment does cause harmful interference to radio or television reception, which can be determined by turning the equipment off and on, the user is encouraged to try to correct the interference by one or more of the following measures:

- Reorient or relocate the receiving antenna.
- Increase the separation between the equipment and receiver.
- Connect the equipment into an outlet on a circuit different from that to which the receiver is connected.
- Consult the dealer or an experienced radio/TV technician for help.

This device complies with Part 18 of the FCC Rules. This equipment generates, uses and can radiate radio frequency energy and, if not installed and used in accordance with the instructions, may cause harmful interference to radio communications. However, there is no guarantee that interference will not occur in a particular installation. If this equipment does cause harmful interference to radio or television reception, which can be determined by turning the equipment off and on, the user is encouraged to try to correct the interference by one or more of the following measures:

- ☐ Reorient or relocate the receiving antenna.
- ☐ Increase the separation between the equipment and receiver.
- ☐ Connect the equipment into an outlet on a circuit different from that to which the receiver is connected.
- ☐ Consult the dealer or an experienced radio/TV technician for help."

Use of the "Made for" logo means that an accessory has been designed to connect specifically to the Apple product(s) shown in the logo, and has been certified by the developer to meet Apple performance standards. Apple is not responsible for the operation of this device or its compliance with safety and regulatory standards. Please note that the use of this accessory with an Apple product may affect wireless performance. Apple Watch, iPad, iPhone, iPod, iPod classic, iPod nano, iPod shuffle, and iPod touch are trademarks of Apple Inc., registered in the U.S. and other countries.