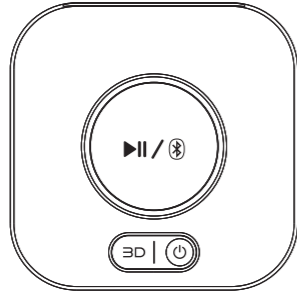


## Bluetooth Adapter User Manual ( APTX,APTX-LL)



New product With  
**apt-X**

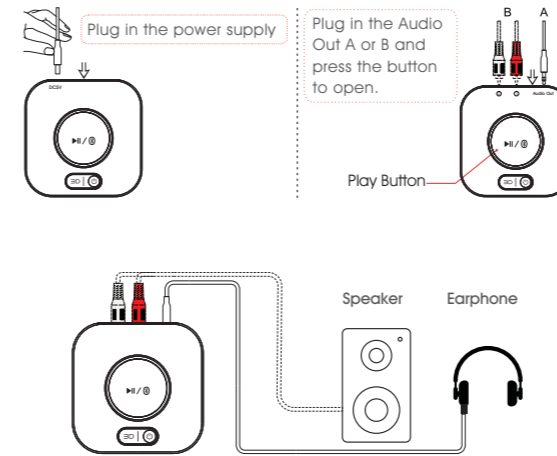
IN LINE WITH THE POLICY OF CONTINUED DEVELOPMENT THE MANUFACTURER RESERVES THE RIGHT TO AMEND THE SPECIFICATIONS WITHOUT PRIOR NOTIFICATION, THE PICTURES AND DATE IN THE STYLEBOOK ARE CONSULT ONLY, IF THERE IS FLUCTUATION, ACCORDING TO THE REAL OBJECT PLEASE.

VER: 1.4  
M/C:06615207006

CE  
ROHS  
Made In China

Thank you for purchasing our high fidelity bluetooth adapter, our company is committed to develop digital products, and let customers life become digital life, and lead the digital age fashion, so that customers can enjoy the latest and most convenient terminal experience. The bluetooth audio high fidelity receiver is recently released, simple use and elegant high definition audio transmission. The design is based on personality intention, support high definition audio reception ( support APTX,APTX-LL ), which allows you to enjoy beautiful music anytime anywhere.

### ◆ Installation steps



### FCC Warning:

This equipment has been tested and found to comply with the limits for a Class B digital device, pursuant to part 15 of the FCC Rules. These limits are designed to provide reasonable protection against harmful interference in a residential installation. This equipment generates, uses and can radiate radio frequency energy and, if not installed and used in accordance with the instructions, may cause harmful interference to radio or television reception, which can be determined by turning the equipment off and on, the user is encouraged to try to correct the interference by one or more of the following measures:

- o Reorient or relocate the receiving antenna.
- o Increase the separation between the equipment and receiver.
- o Connect the equipment into an outlet on a circuit different from that to which the receiver is connected.
- o Consult the dealer or an experienced radio/TV technician for help.

### ◆ Application scenario

You can change all wired sound device into bluetooth audio device with our adapter. Get rid of wire, enjoy wireless music.

### ◆ Instruction:

1. use the DC power supply to supply the DC -5V, and connect the equipment and acoustics with audio line.
2. Press the "Power" button on the adapter, it will connect with the last connected device.
3. open bluetooth and search for "B06" to connect to it.
4. After successful connection, the blue light or the green light on, depending on what kind of sound effect was used last time. The blue LED will be on for normal audio. The Green LED will be on for 3D audio.
5. After successful device connection, the 3D audio can be opened or closed by pressing "3D" button. The pause and play of music can be controlled by play button.

### ◆ The operation method of connecting two phones:

When the device has connected to a mobile phone, open the bluetooth of another phone, directly search the device, and connect

it from the bluetooth headset. When two phones are connected, the other phone can still search for "B06", but can not be connected.

### ◆ Re-pairing:

If you want to connect the other phone with the device, press and hold player button for 3 seconds in power on mode, the device will re-enter the pairing status, then you can find "B06" in your phone's Bluetooth list, click it to pair.

### ◆ Product Information

- Product Type: B06**
- Product name: Hi-Fi Bluetooth receivers (Bluetooth adapter)
  - Master: CSR64215
  - Bluetooth version: 4.2
  - Frequency response: 20HZ----22KHZ
  - Operating voltage: DC-5V
  - Working current: < 30mA
  - Power consumption: < 0.2W
  - Use: a wired stereo Bluetooth audio

- Single or double ear: dual stereo
- Color: black
- Transmission radius: > 10m
- Audio output: 3.5MM Jack and the RCA jacks
- Dimensions: 95\*95\*26MM

### ◆ Functional characteristics:

1. Support APTX and APTX-LL( high fidelity, low delay ).
2. Support 3D audio.
3. Less power consumption.
4. it may connect two phones in the same time.
5. Cool backlight.

### ◆ Package materials:

- Bluetooth adapter 1
- Power supply line 1
- Audio cable 1
- Red and white line 1
- Quick guide 1
- Instruction sheet 1

Caution: Any changes or modifications to this device not explicitly approved by manufacturer could void your authority to operate this equipment.

This device complies with part 15 of the FCC Rules. Operation is subject to the following two conditions:  
(1) This device may not cause harmful interference, and (2) this device must accept any interference received, including interference that may cause undesired operation.