

Wireless LAN Access Point User's Manual



Version 1.0
October 2001

Copyright Statement

No part of this publication may be reproduced in any form or by any means or used to make any derivative such as translation, transformation, or adaptation without permission from Remotek Corporation, as stipulated by the United States Copyright ACT of 1976.

This device complies with Part 15 of the FCC rules. Operation is subject to the following two conditions: (1) This device may not cause harmful interference, and (2) This device must accept any interference received. Including interference that may cause undesired operation.

FCC Certifications

This equipment has been tested and found to comply with the limits for a Class B digital device, pursuant to Part 15 of the FCC Rules. These Limits are designed to provide reasonable protection against harmful interference in a residential installation. This equipment generates, uses and can radiate radio frequency energy and, if not installed and used in accordance with the instructions, may cause harmful interference to radio communications. However, there is no guarantee that interference will not occur in a particular installation. If this equipment does cause harmful interference to radio or television reception, which can be determined by turning the equipment off and on, the user is encouraged to try to correct the interference by one or more of the following measures:

- Reorient or relocate the receiving antenna
- Increase the separation between the equipment and receiver
- Connect the equipment into an outlet on a circuit different from that to which the receiver is connected
- Consult the dealer or an experienced radio/TV technician for help

FCC Caution:

To assure continued compliance, (example – use only shielded interface cables when connecting to computer or peripheral devices). Any changes or modifications not expressly approved by the part responsible for compliance could void your authority to operate the equipment

Wireless LAN Access Point User's Manual**FCC RF Radiation Exposure Statement**

This equipment complies with FCC RF radiation exposure limits set forth for an uncontrolled environment. This equipment should be installed and operated with a minimum distance of 20 centimeters between the radiator and your body.

This transmitter must not be co-located or operating in conjunction with any other antenna or transmitter.

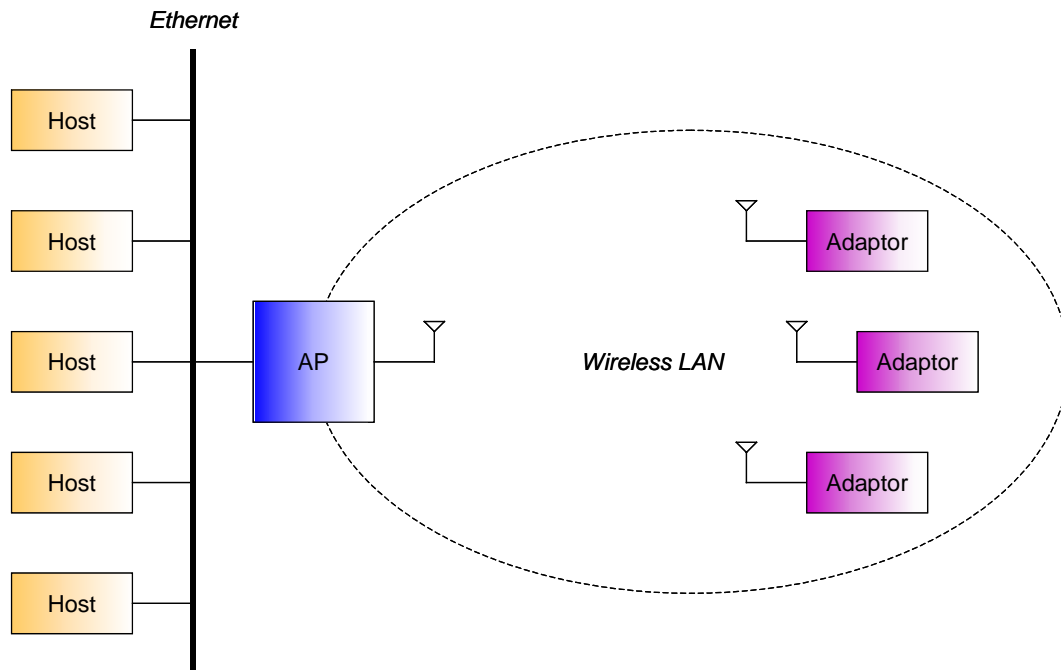
Contents

1.	Introduction:.....	6
2.	Features:	7
3.	Environment Requirement:	7
4.	Install AP SNMP Manager:.....	8
4.1.	Execute the Installation Program.....	8
4.2.	Select Destination Folder	8
4.3.	Select Program Folder	9
4.4.	Before Start to Copy Files.....	9
4.5.	Installation Complete	10
5.	Quick Start:.....	11
5.1.	Connect your AP to your PC.....	11
5.2.	Setting up IP Settings of Windows 2000	11
5.2.1.	Open Network Properties	11
5.2.2.	Check the existence of Internet Protocol (TCP/IP)	11
5.2.3.	Install Internet Protocol (TCP/IP)	12
5.2.4.	Setting up Configurations of Internet Protocol (TCP/IP).....	12
5.3.	Connect to AP by using AP SNMP Manager.....	13
5.4.	Modify IP Settings of AP.....	14
5.5.	Download Changes to AP or Refresh Setting from AP.....	14
6.	Setting Up Configurations by AP SNMP Manager:.....	15
6.1.	Connect to your AP.....	15
6.1.1.	Find Access Point	15
6.1.2.	Connect to Access Point	16
6.2.	Close Connection of AP.....	16
6.3.	Get Statistics.....	17
6.4.	Modify Configurations	18
6.4.1.	Modify Bridge IP Configuration	18
6.4.2.	Modify Filtering Configuration	19
6.4.3.	Modify Privacy Options.....	19
6.4.4.	Modify Wireless Operation Settings	19
6.4.5.	Modify Authorized MAC Adresses.....	20
6.4.6.	Traps	21
6.4.7.	Modify Authorization Configuration	21
6.5.	Download Changes to AP or Refresh Setting from AP.....	22
6.6.	Reset AP or Restore Defaults.....	22

Wireless LAN Access Point User's Manual

- 7. Wireless LAN AP Operation Modes:23
 - 7.1. Wireless LAN Access Point.....23
 - 7.2. AP Client.....23
 - 7.3. Bridge24
 - 7.3.1. Bridge Connection Example 125
 - 7.3.2. Bridge Connection Example 2.....25
 - 7.4. Modify Operation Mode by AP SNMP Manager26
- 8. Specification:27

1. Introduction:



We can use AP to connect Ethernet and Wireless LAN. Adaptors can send packets through AP to Ethernet.

2. Features:

- Compliant with 11 Mbps IEEE802.11b high data rate specification
- Seamless roaming within the 802.11 and 802.11b wireless LAN infrastructure
- Supports 10Base-T networks
- Optimized wired-to-wireless data transfer
- Independent network operating system
- Enables roaming capability
- Antenna diversity for maximum communication, reliability and operating range
- Supports SNMP and web-based management
- Watchdog timer
- Easy to install and user friendly
- Bridge function point to point, point to multipoint.

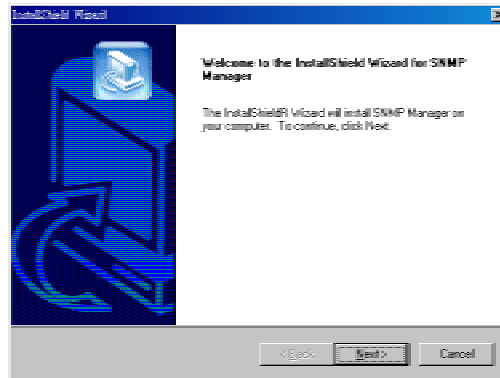
3. Environment Requirement:

You'll need these equipments to set up the AP:

- AP Manager Installation CD or Disk
- Wireless LAN Access Point
- PC with Windows 95/98/ME/2000 (Only need one OS of the list)
- Ethernet or a RJ-45 Cross-Over cable

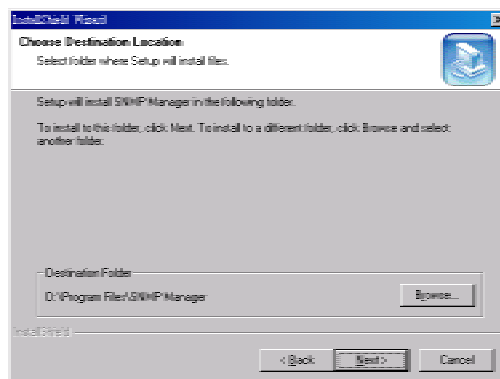
4. Install AP SNMP Manager:

4.1. Execute the Installation Program



Put the Installation CD into the CD-ROM of PC, and execute the installation program **Setup.exe**. You'll see the welcome page of the installation program. For next step, click **Next** to continue.

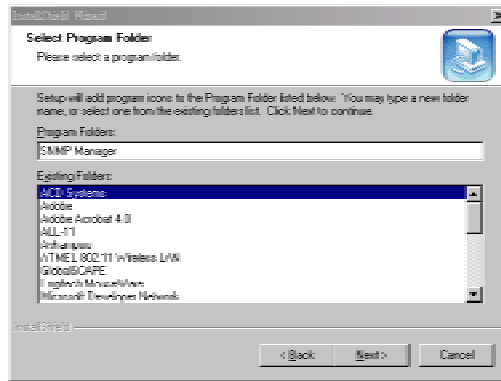
4.2. Select Destination Folder



You'll find where the files will be installed in this frame. If you want to change the destination folder, please click **Browse** to select the folder to install. For next step, click **Next** to continue.

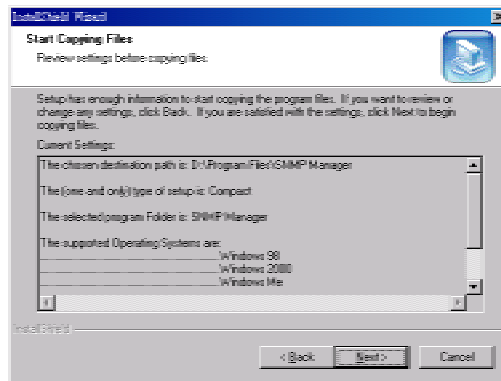
Wireless LAN Access Point User's Manual

4.3. Select Program Folder



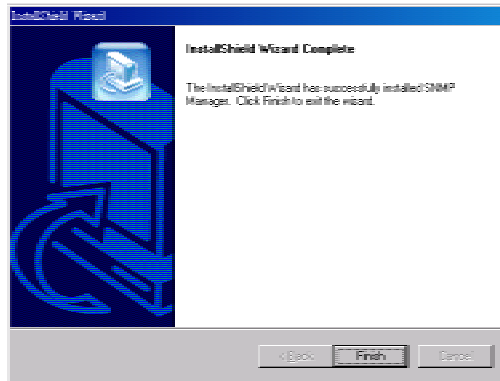
You'll find where the program links will be installed in this frame. If you want to change the program folder, please type the name in the field of Program Folders. For next step, click **Next** to continue.

4.4. Before Start to Copy Files

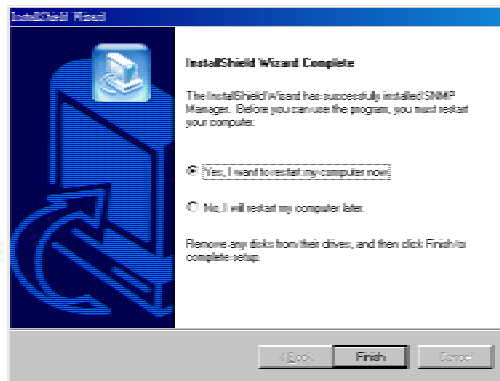


You'll find all settings of this installation in this frame. If you want to change the settings, please click **Back** to the frame that you want to fix up. For start to copy files, click **Next** to continue.

4.5. Installation Complete



You'll see this frame if the installation is completed successfully, click **Finish** to continue.



You may need to restart your PC after installation to make all registries valid. If you accept to restart computer immediately, select *Yes, I want to restart my computer now* and click **Finish** to restart your PC. If you don't accept to restart computer immediately, select *No, I will restart my computer later* and click **Finish** to close the installation program.

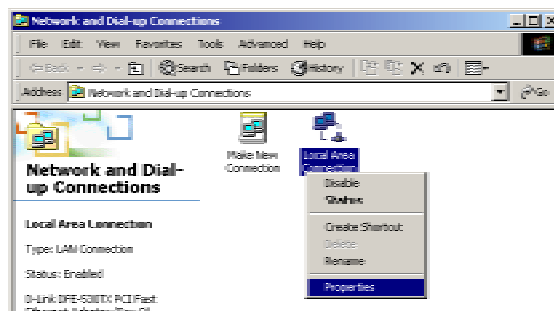
5. Quick Start:

5.1. Connect your AP to your PC

Please connect your AP to the Ethernet where your PC is, or connect your AP to your PC by RJ-45 Cross-Over cable. Please avoid the other PCs on the Ethernet to use any IP addresses of 192.168.0.xxx / 255.255.255.0 on the Ethernet.

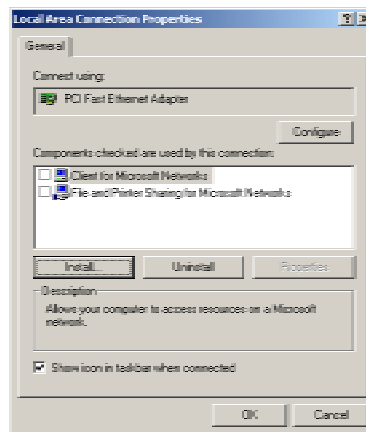
5.2. Setting up IP Settings of Windows 2000

5.2.1. Open Network Properties



Double-click on **Network and Dial-up Connections** on **Control Panel**, and Right-Click on the connection and select **Properties**.

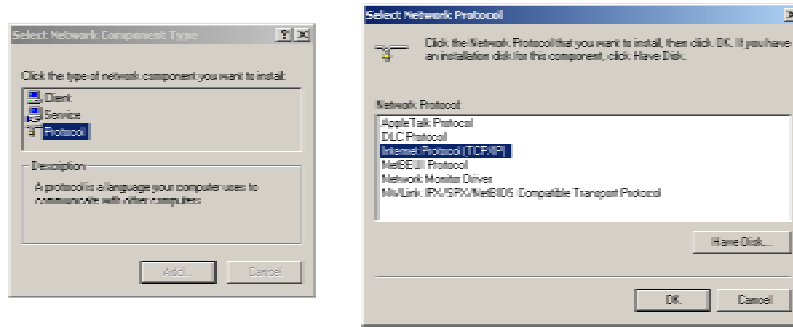
5.2.2. Check the existence of Internet Protocol (TCP/IP)



If *Internet Protocol (TCP/IP)* exists, please jump to 5.2.4. If *Internet Protocol (TCP/IP)* doesn't exist, please continue the procedure of 5.2.3.

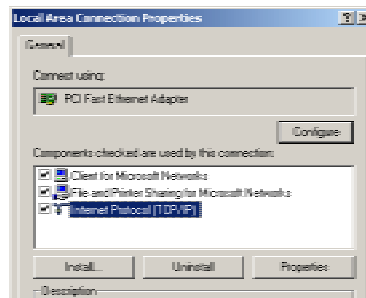
Wireless LAN Access Point User's Manual

5.2.3. Install Internet Protocol (TCP/IP)

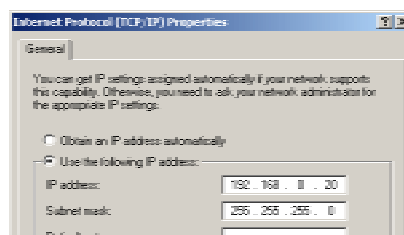


Click **Install...** in connection properties frame. Select **Protocol** and click **Add...**. After all, select **Internet Protocol (TCP/IP)** and click **OK**. Windows 2000 will install TCP/IP protocol.

5.2.4. Setting up Configurations of Internet Protocol (TCP/IP)



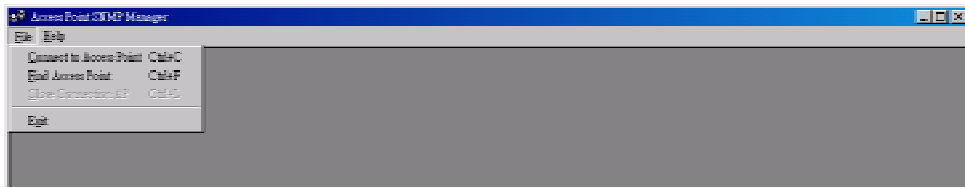
Select **Internet Protocol (TCP/IP)**, and click **Properties**.



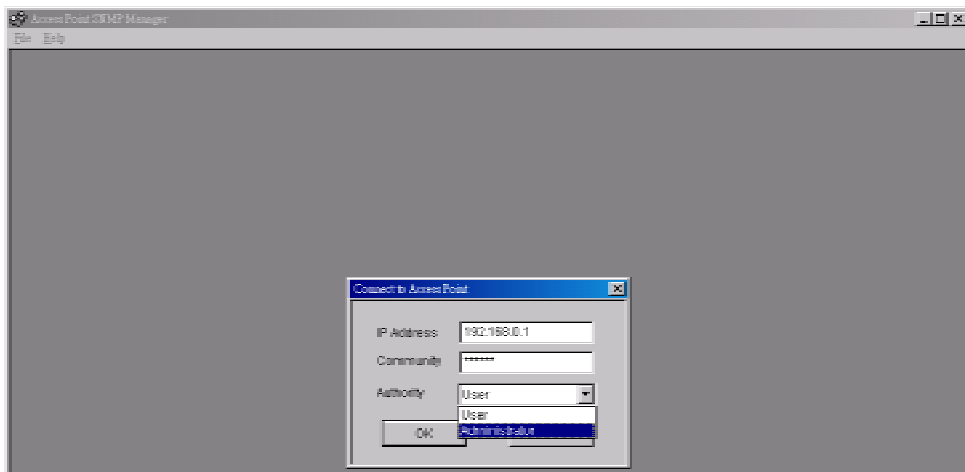
Select **Use the following IP address**. Fill "192.168.0.XXX" in IP address field, and fill "255.255.255.0" in Subnet mask field. Don't fill "192.168.0.1" in IP address field because it's the reserved IP address for AP. After all, click OK to finish the Internet Protocol (TCP/IP) setting.

Internet Protocol (TCP/IP) settings for Windows 95/98/ME are similar to Windows 2000, please refer to User's Manual of Windows 95/98/ME to learn more.

5.3. Connect to AP by using AP SNMP Manager



Please execute AP SNMP Manager, select **Connect to Access Point** on **File** Menu.

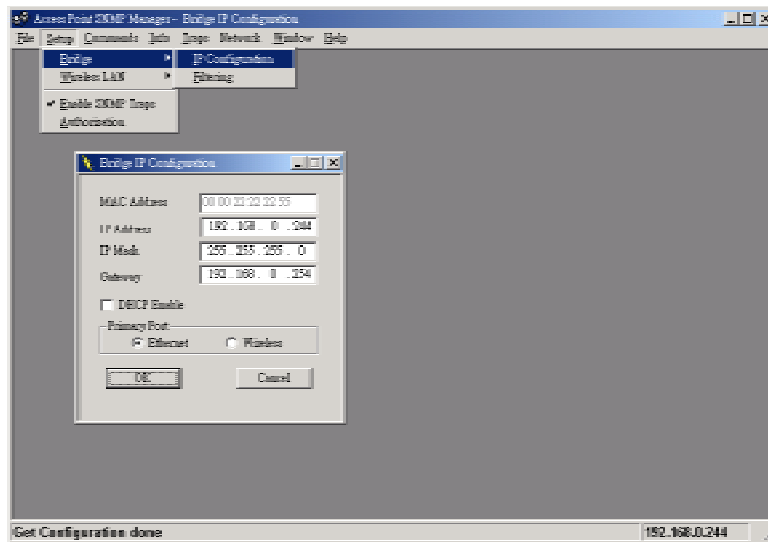


Fill "192.168.0.1" in the field of IP Address and fill "public" in Community field, select "Administrator" of Authority field. After all, click **OK** to connect to AP.



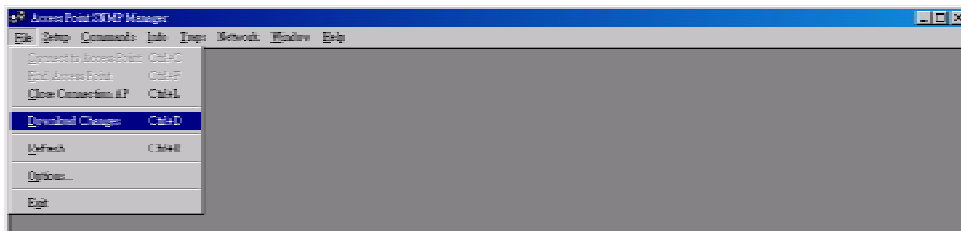
If AP SNMP Manager connects to AP successfully, you can read or modify any configurations of AP.

5.4. Modify IP Settings of AP



Select **IP Configuration** from **Bridge** submenu on **Setup** menu. You can change the configurations of IP Address, IP Mask, Gateway, DHCP Enable, and Primary port here. Primary port is where the DHCP server is.

5.5. Download Changes to AP or Refresh Setting from AP



Select **Download Changes** on **File** menu, then all settings will be downloaded to AP. After that, AP SNMP Manager will command AP to reset. If you want to get the original settings on AP, please select **Refresh** on **File** menu.