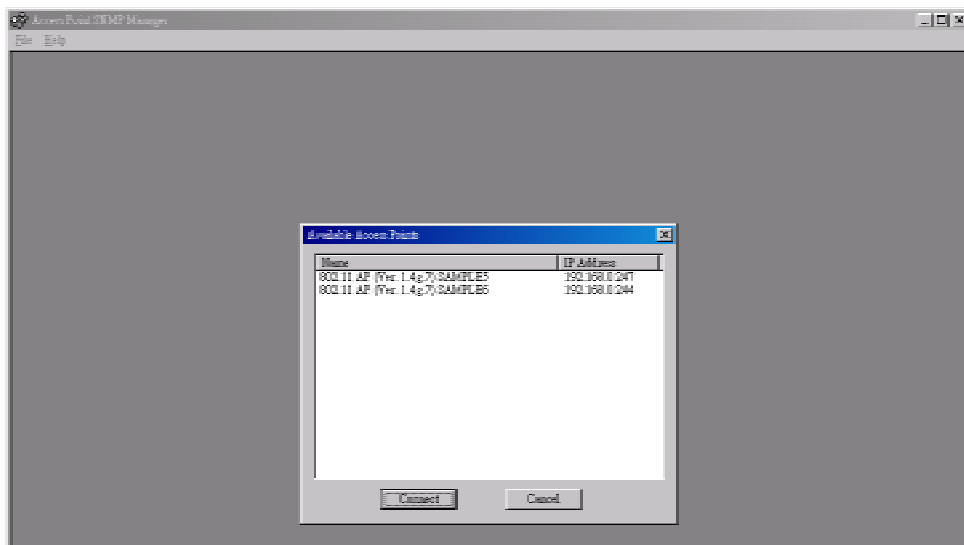


## 6. Setting Up Configurations by AP SNMP

### Manager:

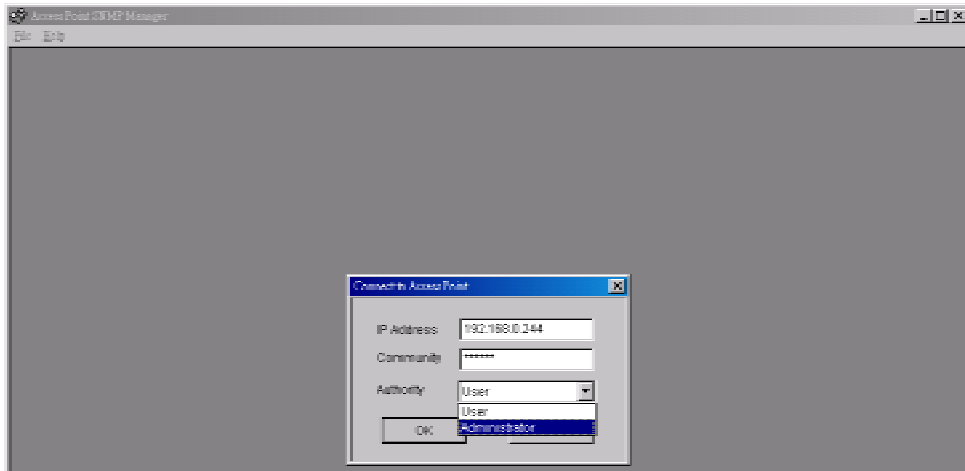
#### 6.1. Connect to your AP

##### 6.1.1. Find Access Point



Select **Find Access Point** on **File** menu. If there are other APs exists on the same subnet, the list of the APs will appear. You can double-click on the AP to connect to it. You can also select the AP and Click **Connect** to connect to it.

### 6.1.2. Connect to Access Point



After Click **Connect to Access Point** on **File** menu, or after select connection target from APs List, the "Connect to Access Point" frame will appear.

- IP Address: Your AP's IP Address.
- Community: Community to connect your AP.
- Authority: You can only read configurations from AP if you select "User". If you select "Administrator", you can read the configurations and also modify the configurations.

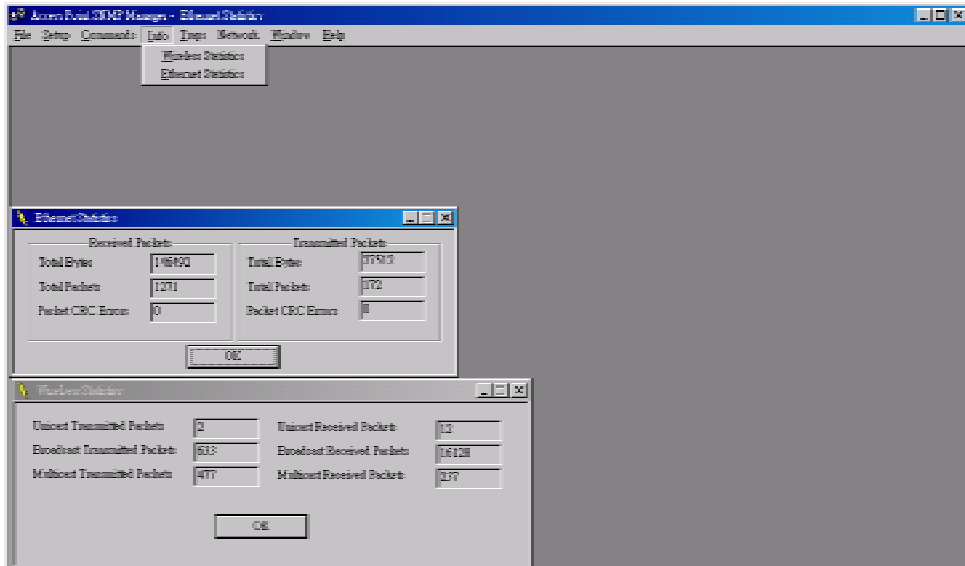
After all settings, click **OK** to connect to AP.

### 6.2. Close Connection of AP

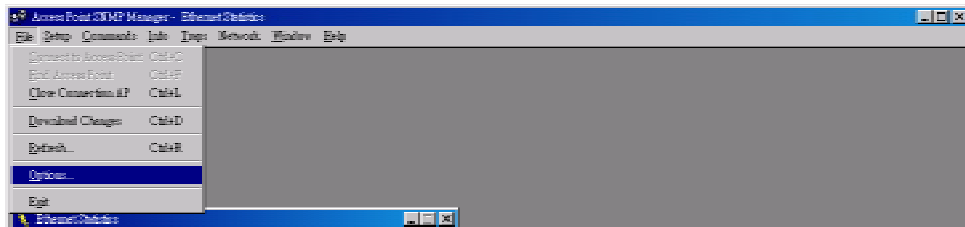


Select **Close Connection AP** on **File** menu to disconnect the connection between PC and AP.

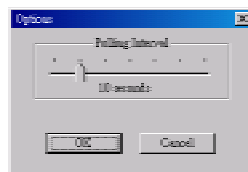
### 6.3. Get Statistics



After connect to AP, select **Wireless Statistics** or **Ethernet Statistics** on **Info** menu. You'll find network statistics in the frames. For default, the statistics will not update automatically.

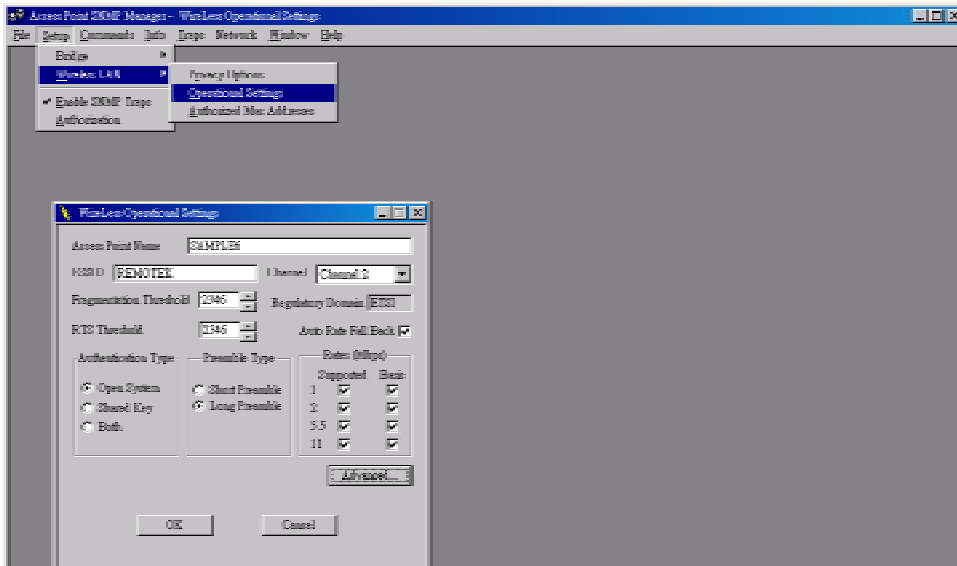


To enable statistics update automatically, select **Options** on **File** menu.



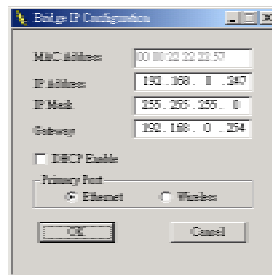
On Options frame, slide to decide automatically update period. Click OK to make the setting valid.

### 6.4. Modify Configurations



Most of the settings will not be downloaded to AP immediately after modifying. You should download the settings by selecting **Download Changes** on **File** menu to make the settings valid.

#### 6.4.1. Modify Bridge IP Configuration

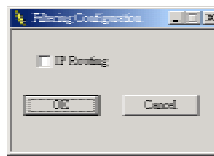


Select **IP Configuration** from **Bridge** submenu on **Setup** menu.

- **MAC Address:** The MAC address of the AP. You can't modify this field.
- **IP Address:** AP's IP address
- **IP Mask:** AP's mask
- **Gateway:** AP's gateway
- **DHCP enable:** Enable DHCP client service that gets IP settings from DHCP server.
- **Primary Port:** Select where the DHCP server is.

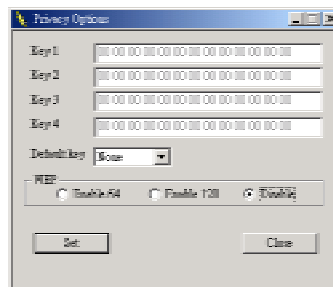
Wireless LAN Access Point User's Manual

6.4.2. Modify Filtering Configuration



Select **Filtering** from **Bridge** submenu on **Setup** menu. If you check IP Routing, only IP Packet will pass through AP between Ethernet and Wireless LAN.

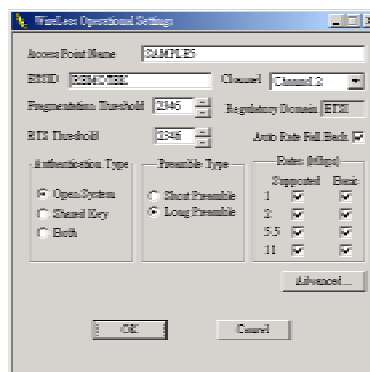
6.4.3. Modify Privacy Options



Select **Filtering** from **Wireless LAN** submenu on **Setup** menu.

- Key 1 ~ Key 4: Fill keys for WEP. 13 octets for 128-bit WEP, and 5 octets for 64-bit WEP.
- Default Key: Select default key from Key 1 ~ Key 4.
- WEP: Select WEP mode. 64-bit WEP, 128-bit WEP, or disable WEP.

6.4.4. Modify Wireless Operation Settings



Select **Operation Settings** from **Wireless LAN** submenu on **Setup** menu.

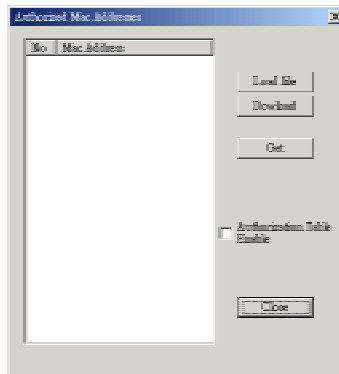
- Access Point Name: Fill in User-Friendly Name.
- ESSID: Fill in Access Point's ESSID. Adaptors could roam over the APs that have same ESSID.
- Channel: Working channel through Channel 1 ~ Channel 13
- Fragmentation Threshold: Packet fragment size.
- RTS Threshold: RTS will not send if the packet is smaller than RTS

**Wireless LAN Access Point User's Manual**

Threshold.

- Authentication Type:
  - ◆ Open System: Any adaptor could connect to AP.
  - ◆ Shared Key: Adaptors using shared key encryption could connect to AP.
  - ◆ Both: Adaptors could connect to AP by both kind of authentication type.
- Preamble Type: Select the type of preamble field of PPDU. If select short preamble, throughput performance will be improved.
- Auto Rate Fall Back: Rate will fall back due to interferences.
- Rates: Select support rates and basic rates here.
- Advance: Please refer to [7. Wireless LAN AP Operation Modes](#).

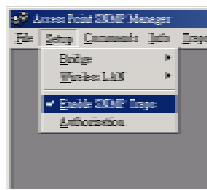
**6.4.5. Modify Authorized MAC Addresses**



Select **Authorized Mac Addresses** from **Wireless LAN** submenu on **Setup** menu. Different from most other configurations in **Setup** menu, all settings could be valid in this frame.

- Load file: You can build a text file that consists a list of MAC Addresses  
 Ex. 001122334455  
 998877665544  
 means 00:11:22:33:44:55 and 99:88:77:66:55:44 will be load to the list of MAC addresses.
- Download: Download MAC addresses from the list to AP.
- Get: Get MAC addresses from AP to the list.
- Authorization Table Enable: If checked, only devices using MAC address in authorization table could connect to the AP.
- Close: Close the Frame

### 6.4.6. Traps

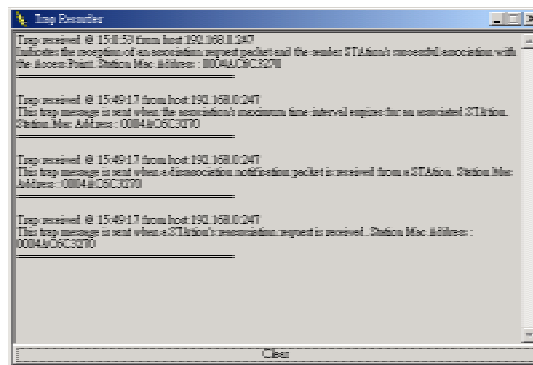


Select **Enable SNMP Traps** on **Setup** menu. If checked, AP SNMP Manager may receive trap messages from AP.



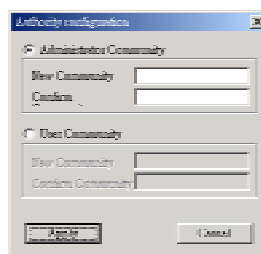
When AP SNMP Manager receives trap messages from AP, " # <Trap Received> " will appear on bottom-right of AP SNMP Manager.

Select **View Records** on **Traps** menu.



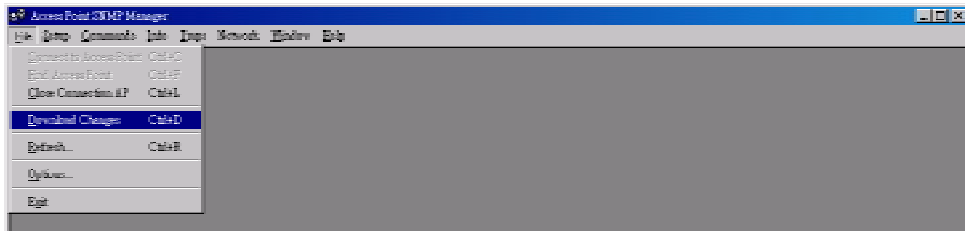
You can read all traps in this frame. Click **Clear** to clear all traps and leave.

### 6.4.7. Modify Authorization Configuration



Select **Authorization** on **Setup** menu. You can change Administrator's and User's communities here.

### 6.5. Download Changes to AP or Refresh Setting from AP



Select **Download Changes** on **File** menu, then all settings will download to AP. After that, AP SNMP Manager will command AP to reset.

If you want to get the original settings on AP, please select **Refresh** on **File** menu.

### 6.6. Reset AP or Restore Defaults



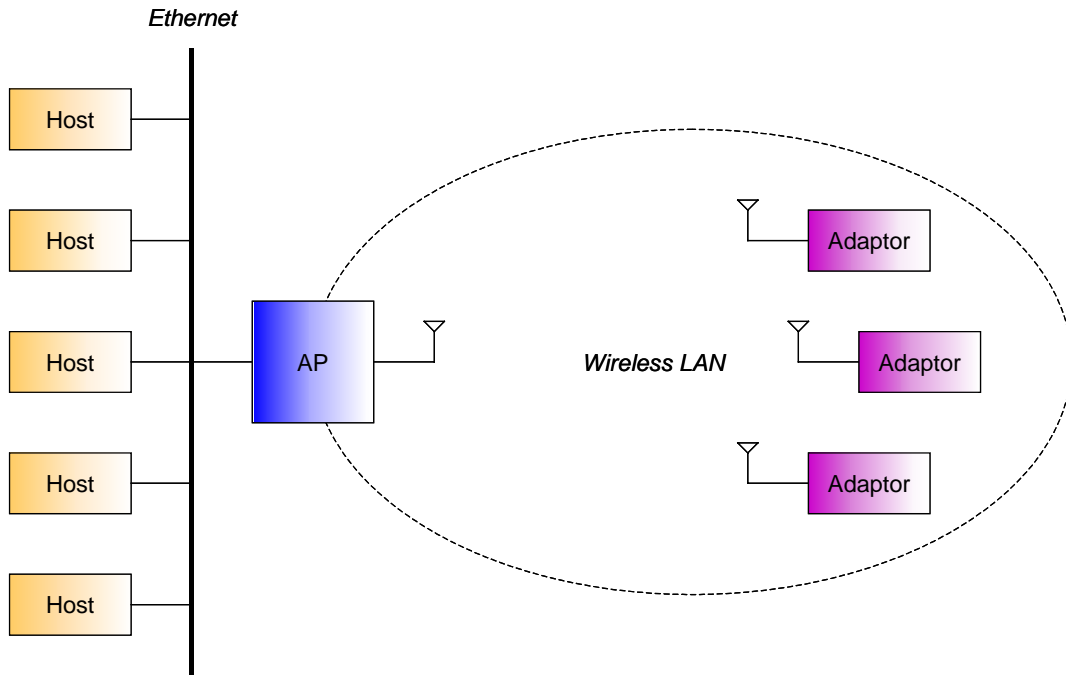
Select **Reset Device** on **Commands** menu. The AP will be reset.

Select **Restore Device** on **Commands** menu. The AP will restore default settings.



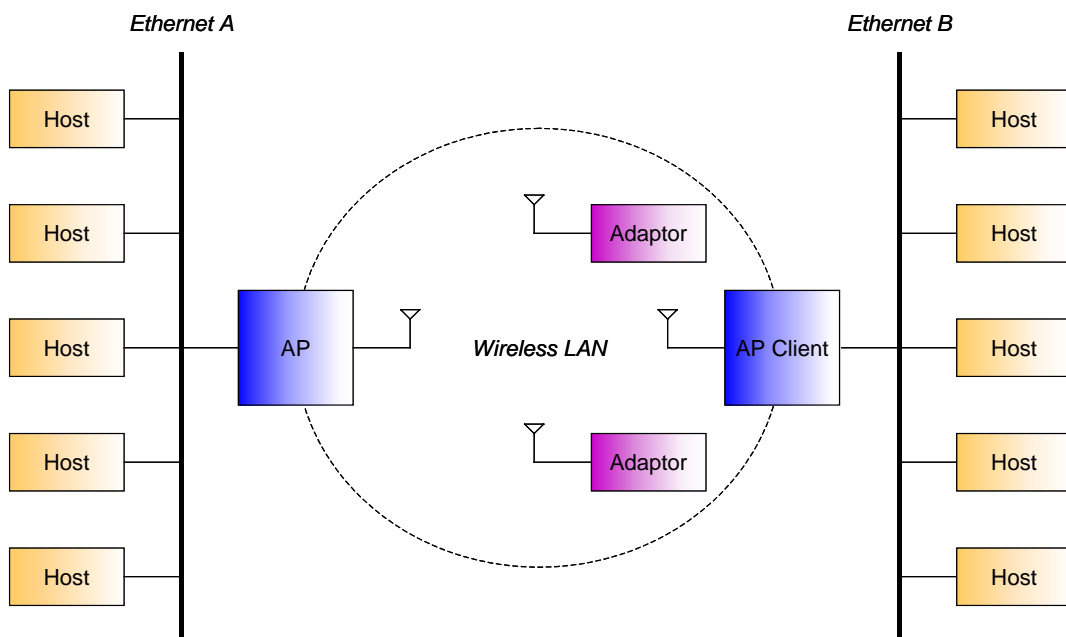
## 7. Wireless LAN AP Operation Modes:

### 7.1. Wireless LAN Access Point



AP provides the capability of connecting Wireless LAN to Ethernet. Adaptors can connect to Ethernet through AP.

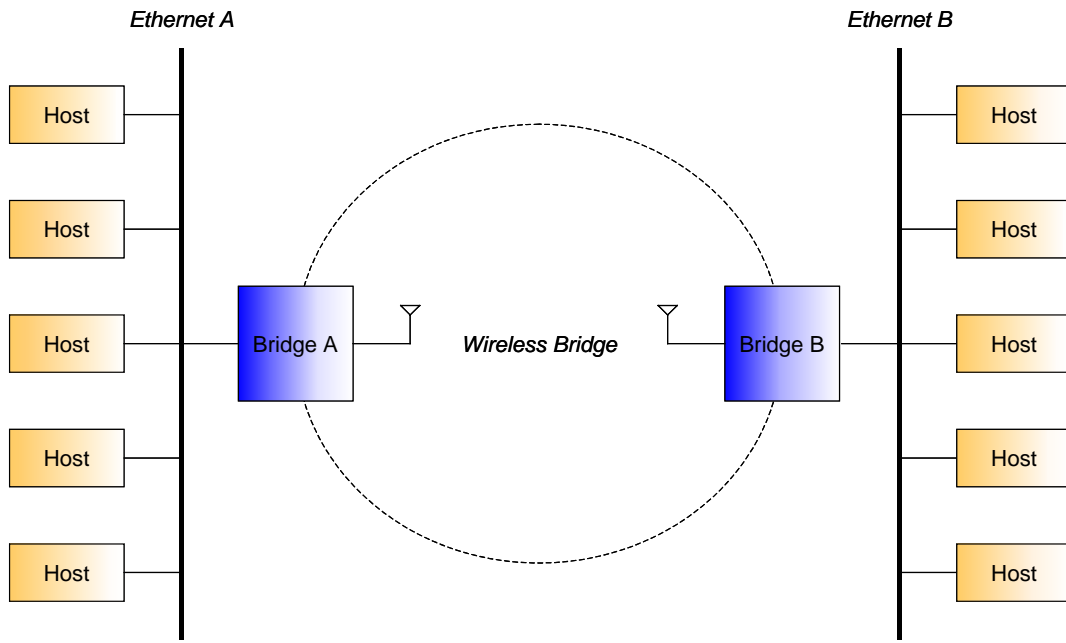
### 7.2. AP Client



**Wireless LAN Access Point User's Manual**

AP Client could connect to the AP like an adaptor. The figure shows that Ethernet B has connected to Ethernet A. Adaptors still could connect to the AP that the AP Client connected to.

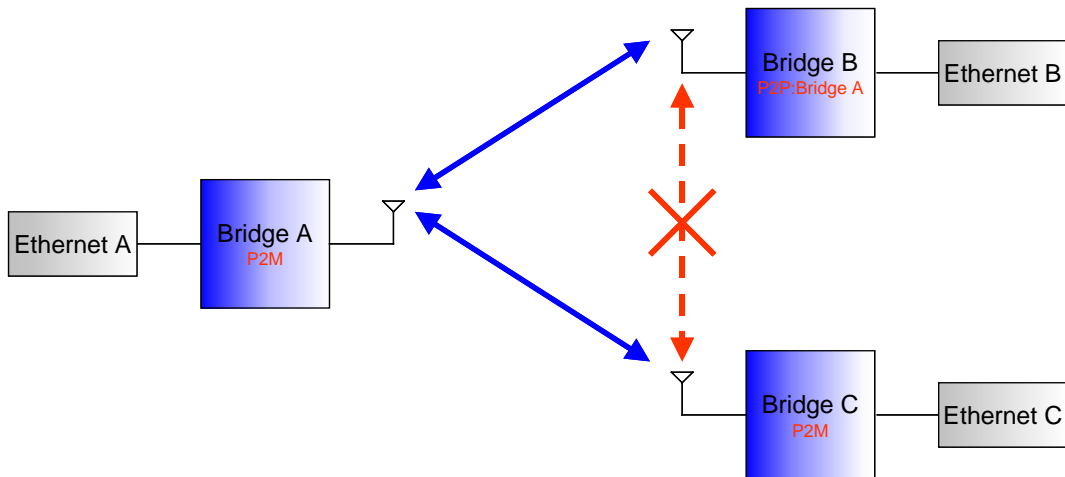
**7.3. Bridge**



Different from the AP – AP Client mode, no adaptors could connect to any bridge in bridge mode. And there are two bridge modes.

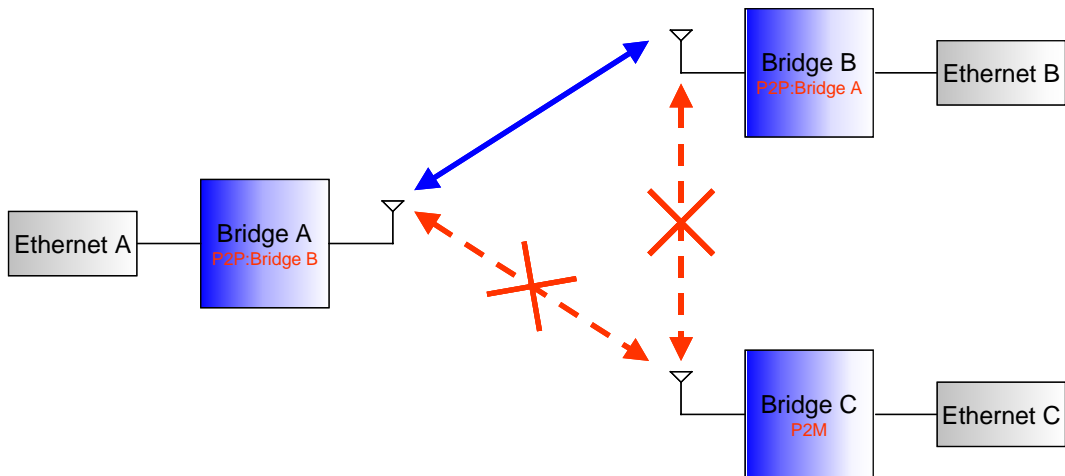
- Wireless Bridge Point-to-Point  
Bridge in this mode will only connect to one fixed bridge.
- Wireless Bridge Point-to-Multipoint  
Bridge in this mode will connect to any other bridges nearby.

7.3.1. Bridge Connection Example 1



Bridge A and Bridge C are in Point-to-Multipoint mode, Bridge B in Point-to-Point mode that only connect to Bridge A. In this case, Bridge A could connect to both Bridge B and Bridge C, but Bridge C could only connect to Bridge A.

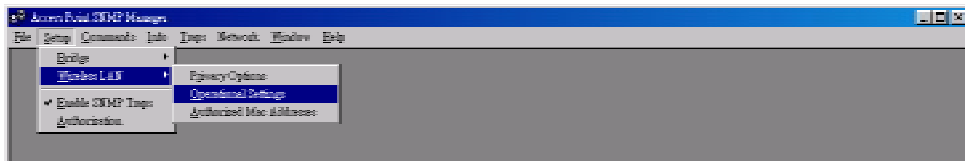
7.3.2. Bridge Connection Example 2



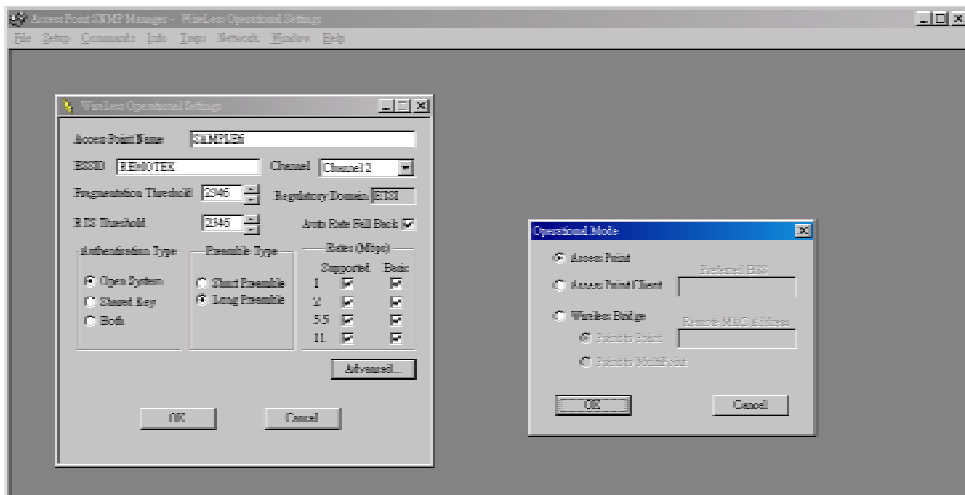
If we set Bridge A to be Point-to-Point mode that only connect to Bridge B. Bridge C can't connect to either Bridge A or Bridge B.

Wireless LAN Access Point User's Manual

7.4. Modify Operation Mode by AP SNMP Manager



Select **Operation Settings** from **Wireless LAN** submenu on **Setup** menu.



Click **Advanced...**, Operation Mode frame will appear.

- Access Point: Normal Access Point mode
- Access Point Client: You have to fill AP's BSSID in Preferred BSSID field. And the ESSID of AP Client should be the same as AP's.
- Wireless Bridge: All Bridges should use same channel in same connection.
  - ◆ Point-to-Point: You have to fill in the MAC address of the Bridge that you want to connect.
  - ◆ Point-to-Multipoint: In Point-to-Multipoint mode, you don't have to set MAC addresses.

## 8. Specification:

### Standard Compatibility

- IEEE802.11b, FCC, ETSI, Wi-Fi compatible
- All major networking standards, including IP, IPX
- Wireless Network Interface: IEEE 802.11b (CSMA/CA)
- Wired Network Interface: RJ45(10Base-T)
- Encryption: 64-bit WEP and 128-bit WEP

### Environmental

- Operating Temperature is from 32 to 131 (0 to 55 )
- Humidity (non-condensing): 10 to 90%

### Power specification

- Power Consumption: 5V±5%@800mA
- Power Requirements: 110-120V/220-240V

### Radio Specifications

- RF Output Power: 15 dBm
- Modulation Technique: Direct Sequence Spread Spectrum  
CCK@5Mbps/11Mbps DQPSK@2Mbps DBPSK@1Mbps
- Typical Range: \*50m indoors, 100m outdoors when 11Mbps  
(May vary depending on operation environment)
- Frequency range: 2.4-2.4835 GHz
- Number of channels
- Antenna: Embedded Antenna Modulation with diversity support, gain?dB

### Physical Dimensions

- 190\*249\*50mm?

### Other Function

- Led Indicators: Status, network activity and RF Activity