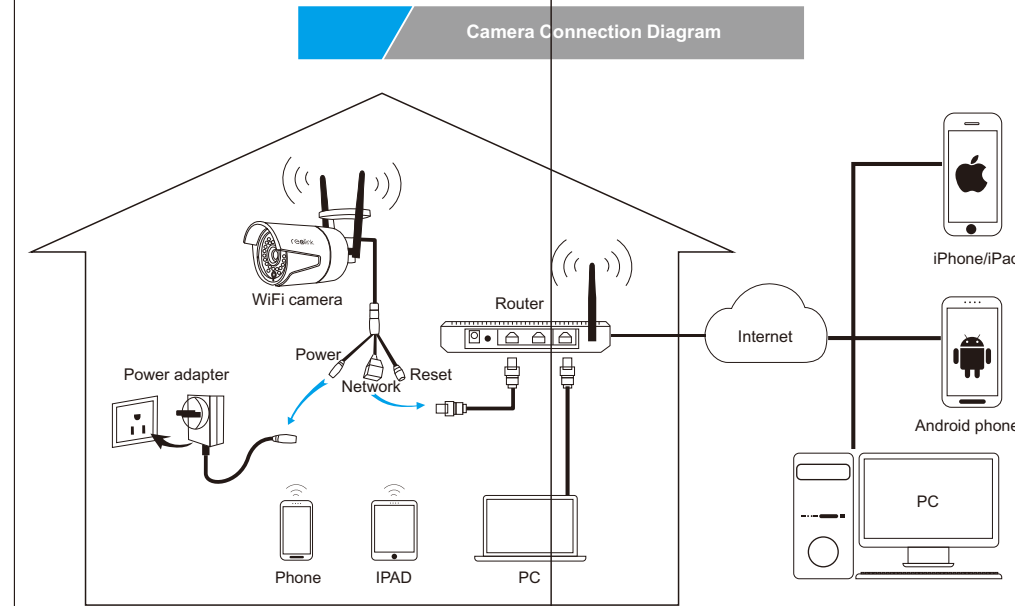


reolink

Quick Start Guide

Mobile App



Attention: For Initial Setup, connect the camera by network and power cable. Then follow the steps below.

1 Install Reolink APP

You can search for " **Reolink** " App from Apple Store or Google Play or you may scan the QR code below to download the App .

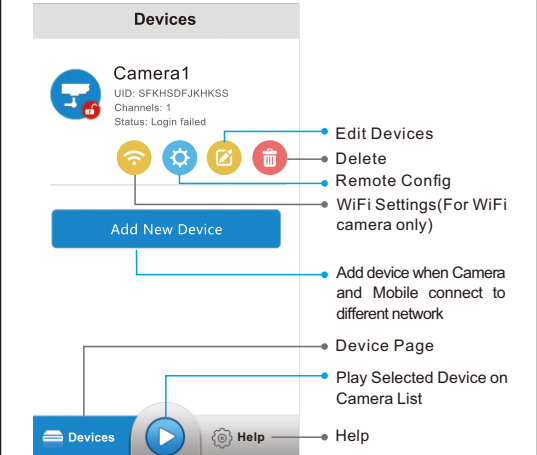


After downloading , Install and launch the application .



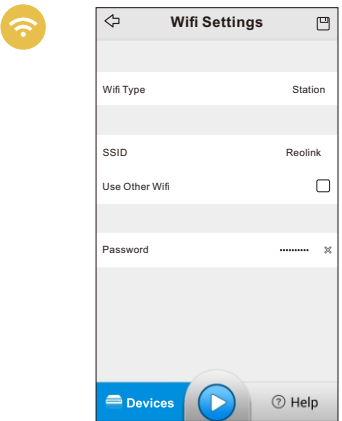
2 Use Reolink APP

During start-up , you will see the splash screen and Devices page . App will auto show the device list in your LAN (Local Area Network).



3 WiFi Settings

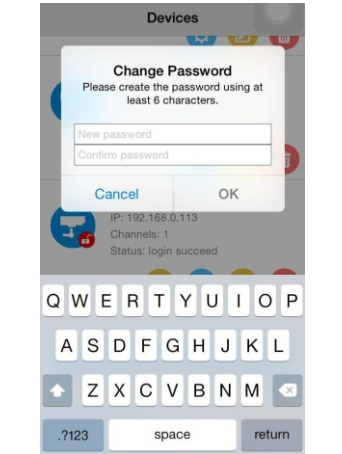
Click Menu button , you will go back to the device page , Click WiFi button , then you can set WiFi settings.



A: Click SSID to search the WiFi signal, choose the WiFi signal and enter the password
 B: If Use Other WiFi, click it and input SSID and password. Then save the settings.

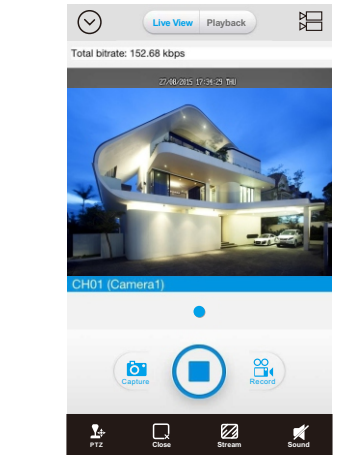
4 Create the password

Choose and click the Device you want to add , For security purpose , You need to create the password for first time use . Then click OK.



5 Live View

Now you can see the Live View page as below



- Menu Button:** Access to Devices page
- Live View:** Access to live view mode
- Playback:** Remotely playback video recorded (This function for camera with SD card and NVR only)
- Live View Config :** Allows to enable or disable the camera availability
- Shows the camera or group you are viewing
- Capture:**Take snapshot and save image to your mobile device
- Stop/Start live view of the camera
- Record:** Video of the camera
- Control PTZ camera
- Stop/Start selected camera
- Video quality stream
- Enable/Disable audio

! Capture and Record path on mobile devices as below:
 iPhone/iPad : Photos folder
 Android device : My File / Reolink

6 Add Device in Different Network

On Devices page,click **Add New Device** button to add and modify Device . After finished setting ,click Save .

- Device Name:**Modify Device name here
- Connect Mode:** Change the connection mode to P2P or IP/ Domain by click arrow button
- UID:**Click QR code button to scan QR code or directly input the UID
- User Name and Password**
- Save:** Save the settings you modified on this page
- Start Live View:** Click to view the device

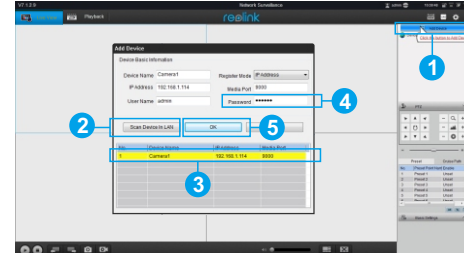


Client Software

Please Install Reolink Client Software from CD or download software from www.reo-link.com . Then run the software .

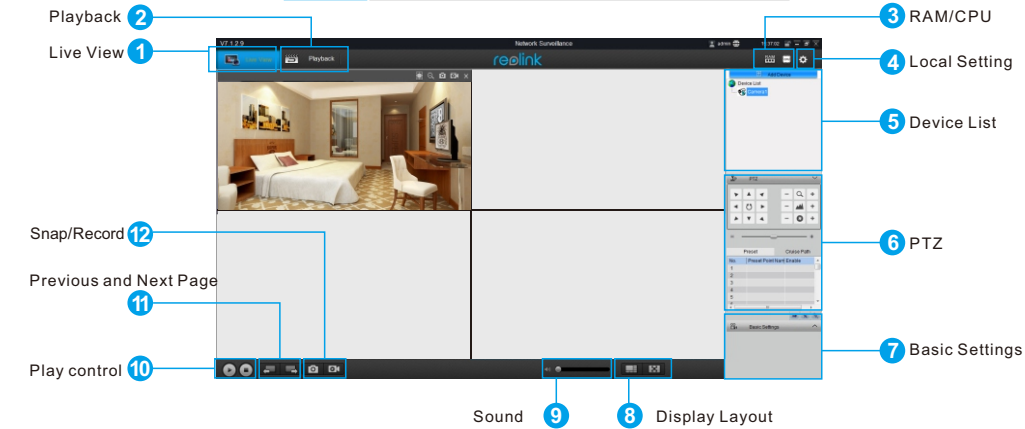
1 Add Device

- Click Add Device button on the top right
- Click Scan Device in LAN
- Double click the device you want to add,then device info will be displayed.
- Input the password (default password is Blank) ,if you already create password on Reolink App ,You need to use the password you created to log in .
- Then click OK to log in



You can also use UID mode to log in . From Register Mode area, select the mode to UID , then input your UID to UID field.

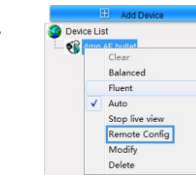
2 Client UI Introduction



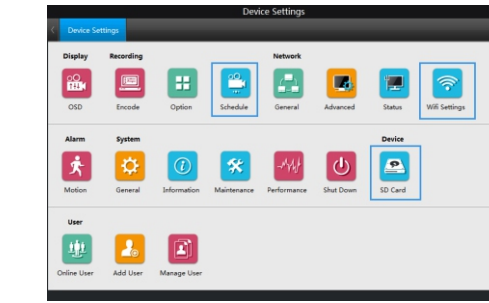
- Live View:** Access the live view mode.
- Playback :** Remotely playback video recorded to NVR or camera SD card.
- RAM/CPU:** Shows the memory and CPU loading.
- Local Setting:** Setting the Record/Download/Capture path.
- Device List:** Shows the Device connected to the software.
- PTZ :** Setting the PTZ parameters.
- Basic Settings:** Can set OSD/Encode/Image parameters.
- Display Layout:** Choose 1 / 4 channel view
- Sound:** Enable / Disable the sound and adjust the volume of the sound
- Play Control:** Choose to play Clear/Fluent video.
- Previous and Next Page :** Choose which group of channel to display during multi-channel view .
- Snap/Record:** Capture image or record live video.

3 Remote Config

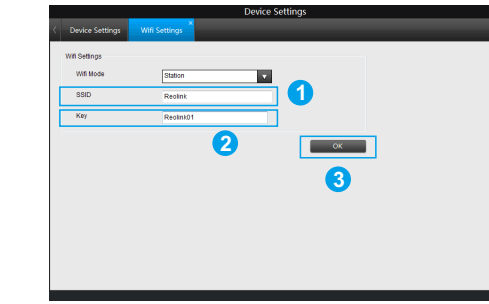
Right click the Device , it will show the setting windows



Click Remote Config , you will see below windows



4 WiFi Settings

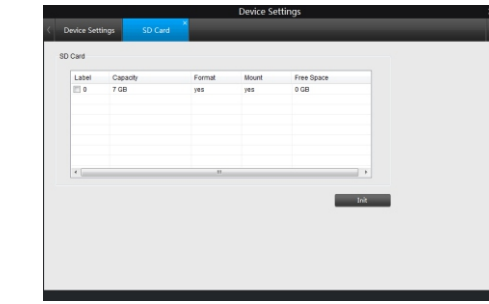


On Device Setting — WiFi Setting page` You can set WiFi for the camera.

- Input the SSID for your WiFi signal.
- Input password for your WiFi.
- Click OK.

Now you can disconnect the network cable and view the camera by WiFi .

5 SD Card

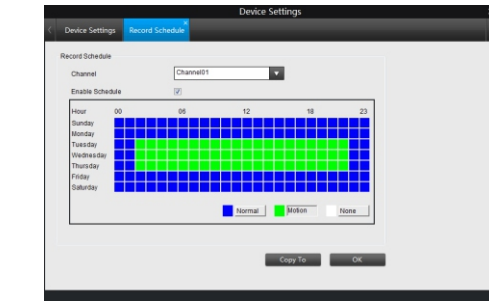


On device Setting- SD card page, you may check the storage for the SD card.

Click the Init button you may format the SD card. SD card can only support alarm video storage.

Note: For the IP cameras with SD card only.

6 Record schedule



On Device Setting --Record Schedule page,you may make the recording plan.

- Normal: Keep recording all the time during your plan
- Motion: If have motion during this schedule, you may receive alarm video and save to SD card.
- None: No recording during this period of time.

FCC Caution:

This device complies with part 15 of the FCC Rules. Operation is subject to the following two conditions: (1) This device may not cause harmful interference, and (2) this device must accept any interference received, including interference that may cause undesired operation.

Any Changes or modifications not expressly approved by the party responsible for compliance could void the user's authority to operate the equipment.

Note: This equipment has been tested and found to comply with the limits for a Class B digital device, pursuant to part 15 of the FCC Rules. These limits are designed to provide reasonable protection against harmful interference in a residential installation. This equipment generates uses and can radiate radio frequency energy and, if not installed and used in accordance with the instructions, may cause harmful interference to radio communications. However, there is no guarantee that interference will not occur in a particular installation. If this equipment does cause harmful interference to radio or television reception, which can be determined by turning the equipment off and on, the user is encouraged to try to correct the interference by one or more of the following measures:

- Reorient or relocate the receiving antenna.
- Increase the separation between the equipment and receiver.
- Connect the equipment into an outlet on a circuit different from that to which the receiver is connected.
- Consult the dealer or an experienced radio/TV technician for help.

This equipment complies with FCC radiation exposure limits set forth for an uncontrolled environment. This equipment should be installed and operated with minimum distance 20cm between the radiator & your body.