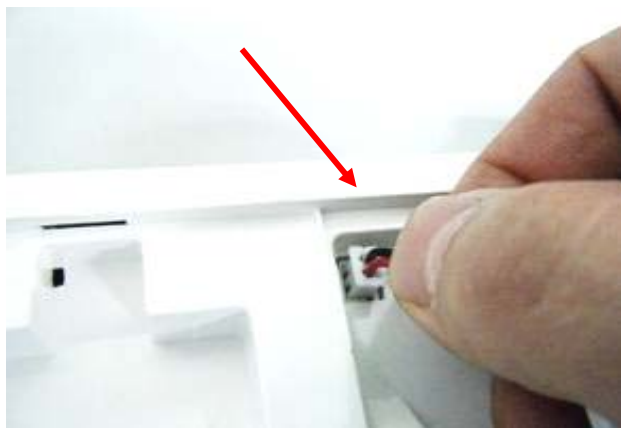


# epad Quick Start Guide

1. RM ePad consists of 3 parts
  - a. writing pad
  - b. wireless pen
  - c. dongle (receiver)



2. To connect the battery, open the battery cover on the back of the RM ePad and plug in the battery wire to the battery connection in the RM ePad



Red LED on power button will light up. Icons will be shown on LCD display



### 3. RM ePad can be used wirelessly or via USB cable (wired mode)

#### (A) Wireless Mode

- plug the dongle into the available USB port in your PC and wait for 2 seconds.
- blue LED on dongle will light up , indicating that dongle is detected by PC
- press the pairing button on dongle, blue LED on dongle will flash (pairing starts)  
(Keep dongle and ePad distance within 3M)
- Once you press pairing button on dongle, you need to press the pairing button on back of ePad within 10 second (see drawing)



- Red LED on power button will flash (2-3 times) and then light up continuously.  
At the same time, "antenna" icon will be shown on LCD display  
This means pairing is successful and completed. You can start to use ePad wirelessly



#### (B) Wired Mode

- connect the USB cable with the USB port on your desktop PC
- you can start to use ePad

### 4. Function keys ..

- lower button on pen = Right mouse button operation
- upper button on pen = Centre (scroll) mouse operation

- Volume Up/Down buttons on ePad (RHS) drive volume
- Mouse Left/Right buttons on ePad (LHS) = left/right click of your mouse

#### 5. Using the pen ..

- Tap pen on digitizer and pen drives cursor on screen (i.e. cursor will follow movement of
- pen can be used as a wireless mouse ...
  - lower button on pen = right mouse button
  - upper button on pen = centre (scroll) mouse button
  - pen tip (when it's pressed and touch digitizer) = left mouse button

\* keep ePad/pen tip distance within 10 mm..

This device complies with part 15 of the FCC rules. Operation is subject to the following two conditions: (1) this device may not cause harmful interference, and (2) this device must accept any interference received, including interference that may cause undesired operation.

NOTE: The manufacturer is not responsible for any radio or TV interference caused by unauthorized modifications to this equipment. Such modifications could void the user's authority to operate the equipment.

NOTE: This equipment has been tested and found to comply with the limits for a Class B digital device, pursuant to part 15 of the FCC Rules. These limits are designed to provide reasonable protection against harmful interference in a residential installation. This equipment generates uses and can radiate radio frequency energy and, if not installed and used in accordance with the instructions, may cause harmful interference to radio communications. However, there is no guarantee that interference will not occur in a particular installation.

If this equipment does cause harmful interference to radio or television reception, which can be determined by turning the equipment off and on, the user is encouraged to try to correct the interference by one or more of the following measures:

- Reorient or relocate the receiving antenna.
- Increase the separation between the equipment and receiver.
- Connect the equipment into an outlet on a circuit different from that to which the receiver is connected.
- Consult the dealer or an experienced radio/TV technician for help.