

# FM Transmitter

Wireless FM Transmitter Radio Car Kit with 3.5mm Audio Plug and Car Charger for iPhone 6/5/4, iPad, iPod, Samsung Devices, and ANY Smart Phones with 3.5mm Audio Plug .

## USER GUIDE

NEW PRODUCT WITH  
USB CAR CHARGER

IN LINE WITH THE POLICY OF CONTINUED IMPROVEMENT, THE MANUFACTURER RESERVES THE RIGHT TO AMEND THE SPECIFICATIONS WITHOUT PRIOR NOTIFICATION. THE PICTURES AND DATA IN THE STYLEBOOK ARE CONSULT ONLY IF THERE IS FLUCTUATION. ACCORDING TO THE REAL OBJECT PLEASE.

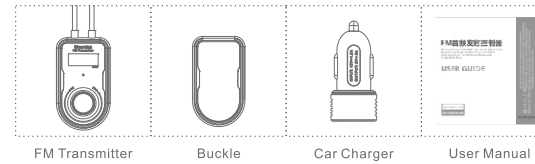
MODEL:RT507

Thanks for your purchase of our products. Gearlist is dedicated to the development of digital products and fits them into the customers' digital life, to lead a digital era fashion and make the customers enjoy the latest and most convenient terminal experience. This vehicle FM transmitter is a newly released, easy-to-use and elegant FM audio transmitting control kit, designed and developed based on "personality", supporting FM Frequency tuning, phone calling and answering. This allows you to enjoy the pleasant music anytime, anywhere.

### ◆ Features

- **Music Play** : It is a Hi-Fi FM audio transmitter, built-in the high quality Phase-locked loop audio decoding technology, you could connect your music devices such as mobile phone, tablet, IPOD, MP3/4 and so on with the car radio by FM and the music will be transferred to the car stereo.
- **Music Inline Control**: It has the inline control function .When playing , you could control the PREV/NEXT/PAUSE functions.
- **Answer the phone** :insert MIC ,so you could answer /hung up a call by this device.
- **Car Charger**: There is a 3A/5V car charger and you could recharge your devices with it .

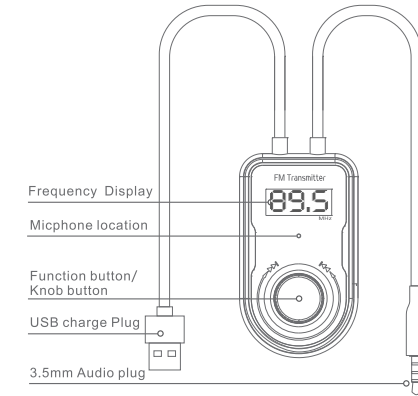
### ◆ Packing contents



### ◆ Specification

- Product name: FM Audio Transmitter
- Size: 62\*36\*21.5mm
- Inline control Compatibility: iPhone series,Samsung series  
( there is a limits for other Android phones)
- Working frequency: USA 88.1-107.9MHZ  
Euro 87.6-107.9MHZ  
Japan 76.0-90.0MHZ
- Interval : 0.1MHz
- Stability : 10ppm(-10 °C~ +55 °C)
- Clutter & harmonic : ≤ -60dB
- Effective range : ≤ 10m
- Input voltage: DC 5V(4.3-5.2V)
- Working current: < 65mA
- Surround audio: 40dB
- Audio response: 20Hz-16KHz
- Audio distortion : ≤ 0.1%(F=75KHz, f=1KHz)
- SNR : ≥ 45Db(1KHz 100%)

### ◆ Product Interface



### ◆ Key and interface function

Operation	Function
Short Press the Function button	Call on/ hung up,Music play/pause
Double click the Function button	Hung up when call in
Long Press 2s the function button	Into FM model( LED flashing), Short pres the button again ,the Screen will lock
Turn left the Funtion button	Music playing model: PREV song FM Transmte model:Next Frequency If there is no any operation in 5s ,the Screen will lock
Turn right the Funtion button	Music playing model: NEXT song FM Transmte model>Last Frequency If there is no any operation in 5s , the Screen will lock

### ◆ Operating Guide

#### Take out the product and parts from the giftbox

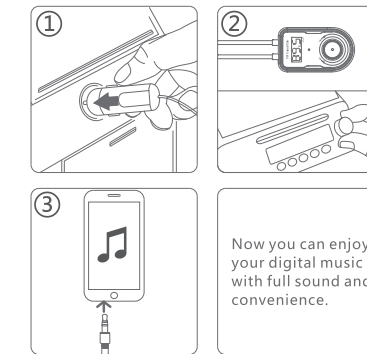
- Get the FM transmitter,car charger ,buckle and the manual
- Check the parts and read the manual carefully ,especially the Knob / Function button
- If you have any questions ,refer to to the FAQ

#### Power on and switch the FM

- Insert the car charger into the cigarette lighter socket of your car and the FM transmitter will power on automatically.
- Find an empty station (see the FAQs and Solution section), and then keep the FM transmitter and car's FM radio at the same frequency.

#### Connect the Audio device to play music

- Connect this unit to compatible devices via 3.5mm audio plug and to adjust the volume up or down when playing music.



Now you can enjoy your digital music with full sound and convenience.

### ◆ FAQ

#### Car charger's indicator will not light up.

- Fully insert the car charger into the car's cigarette lighter socket.

#### There is no sound came from car stereo.

- Check and make sure the car charger has been correctly connected with cigarette lighter socket, audio cable is correctly connected with the playing device and the music is being played.

#### Music has noise.

- Check whether the car FM stereo system's frequency matches with the cigarette power socket via car charger.
- Check your FM frequency channel is a clear one without the interference of your local FM station.
- Check whether the audio files are in good quality.
- Check whether the car is passing strong frequency interference area, such as train station, tram station or mobile transmission station or not.

#### Music from car stereo is almost inaudible.

- Set volume on your input device/car stereo higher.

#### An echo is apparently audible when using my smart phone.

- Set volume on your input device/car stereo lower.

#### How can I reduce the static on my FM transmitter?

- First please make sure you find empty stations(pure statics) in your area.

- Second, make sure the volume is proper.

#### The connection of car charger and car cigarette lighter socket is too tight.

- The car charger is not designed for frequent plugging and unplugging. Please keep it inserted.
- When we design, we make conclusion that if we use the "loose" design, the car charged will be pulled out easily. Thus, we adopt tight design.

### ◆ Recycling

The disposal and recycling must be done as per local area or country regulation; we strive for continued research and development. Thus, we reserve the right to amend this user manual without prior notification.

### ◆ After-sale service

Thanks again for your purchasing of our products. We are willing to offer you the most outstanding products and service and allow you to enjoy a pleasant high technology life. Since the date of purchase, if there is quality problem caused by production defectiveness, it has a 12-month repair warranty. For any doubt, please resort to sale service.

### FCC Caution.

This device complies with part 15 of the FCC Rules. Operation is subject to the following two conditions: (1) This device may not cause harmful interference, and (2) this device must accept any interference received, including interference that may cause undesired operation.

Any Changes or modifications not expressly approved by the party responsible for compliance could void the user's authority to operate the equipment.

**Note:** This equipment has been tested and found to comply with the limits for a Class B digital device, pursuant to part 15 of the FCC Rules. These limits are designed to provide reasonable protection against harmful interference in a residential installation. This equipment generates uses and can radiate radio frequency energy and, if not installed and used in accordance with the instructions, may cause harmful interference to radio communications. However, there is no guarantee that interference will not occur in a particular installation. If this equipment does cause harmful interference to radio or television reception, which can be determined by turning the equipment off and on, the user is encouraged to try to correct the interference by one or more of the following measures:

- Reorient or relocate the receiving antenna
- Increase the separation between the equipment and receiver.
- Connect the equipment into an outlet on a circuit different from that to which the receiver is connected.
- Consult the dealer or an experienced radio/TV technician for help.