

ring

Chime Pro





Say “Hello” to your Chime Pro

Chime Pro instantly sounds customizable audio alerts when your Ring devices capture activity.



It’s also a Wi-Fi extender, so it extends the range of your network and improves the Wi-Fi signal to your Ring devices.



Plug in Chime Pro

Find a location somewhere between your Wi-Fi router, and any other Ring devices you plan to connect to your Chime Pro.



When the Ring logo on the front of your Chime Pro is slowly flashing blue, it is ready to be set up.

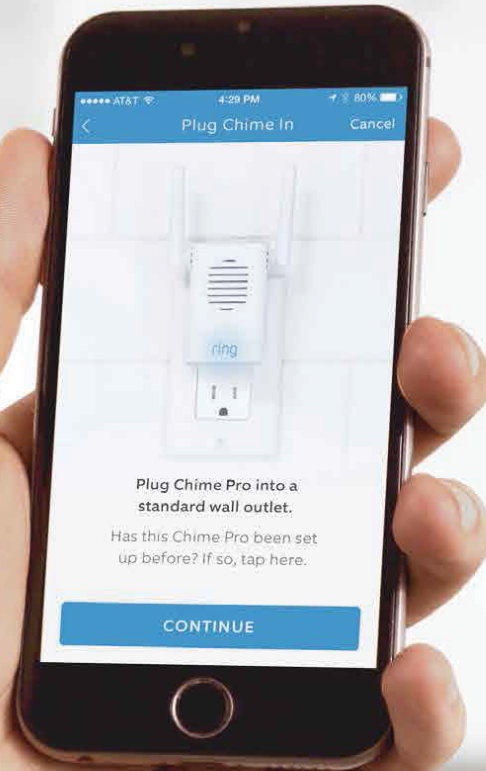


Perform the in-app setup

In the Ring app, select **Add Device**.

Then select **Chime Pro**, and follow the in-app instructions.

Chime Pro can only connect to 2.4GHz networks.



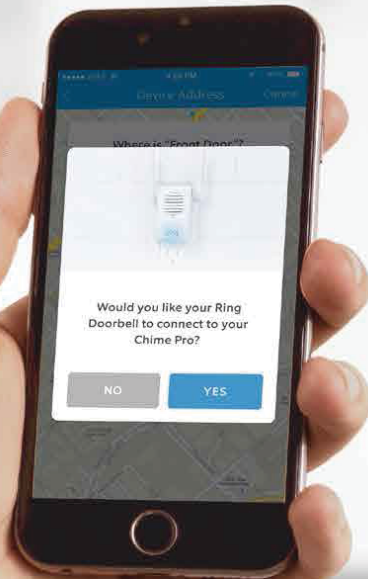
Customize alert preferences for your Chime Pro

Following setup, select the Ring devices you would like your Chime Pro to sound audio alerts from.





Connect other Ring Devices to your Chime Pro



For existing Ring devices, select your Chime Pro in the Ring app, then select Linked Devices.

If you're setting up a new Ring device, and you're asked if you would like it to connect to Chime Pro, select YES.

6



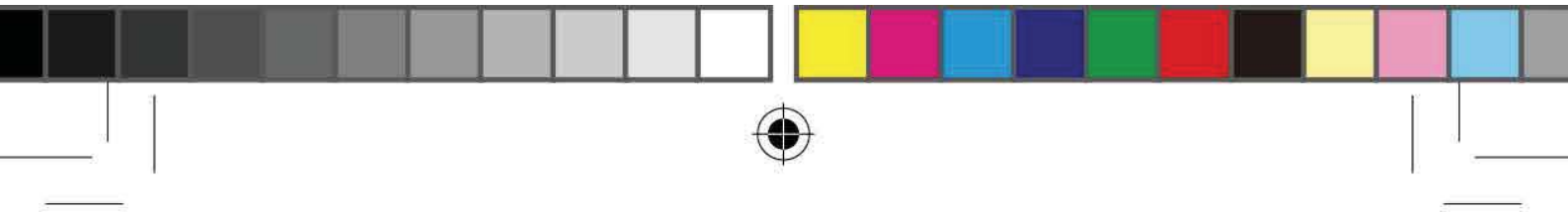
Enjoy your Chime Pro

The Ring logo on the front of Chime Pro uses light patterns to communicate messages.

Fast Pulse
Scanning for Wi-Fi

Slow Pulse
In setup mode

Solid
Online



For additional help, visit:
ring.com/help

Or give us a call...

US 1 800 656 1918

UK 01727 263045

AU 1 300 205 983

NZ +64 9 887 9871

Mexico (D.F) 52 55 8526 5445

Worldwide +1 310 929 7085

For a list of all our customer support numbers,
visit: ring.com/callus



ring 1523 26th St.
Santa Monica, CA 90404



Hereby, Bot Home Automation, declares that this consumer electronic is in compliance with the essential requirements and other relevant provisions of Directive 1999/5/EC. The declaration of conformity may be consulted at www.ring.com/DoC.pdf.

This device complies with Part 15 of the FCC Rules and with Industry Canada licence-exempt RSS standard(s). Operation is subject to the following two conditions: (1) this device may not cause harmful interference, and (2) this device must accept any interference received, including interference that may cause undesired operation. Modifications to this equipment not authorized by Bot Home Automation may void its approval for operation.

Use this device in dry rooms only. Do not cover the device while operating. Do not open the housing. Protect this device from sunlight. Do not use this device outdoors. Disconnecting the plug will power the device off. Do not use the device if the plug or housing is defective, there is a risk of electric shock.

Warning: Changes or modifications to this unit not expressly approved by the party responsible for compliance could void the user's authority to operate the equipment.

This equipment should be installed and operated with minimum distance 20 cm between the radiator & your body.

NOTE: This equipment has been tested and found to comply with the limits for a Class B digital device, pursuant to Part 15 of the FCC Rules. These limits are designed to provide reasonable protection against harmful interference in a residential installation. This equipment generates, uses and can radiate radio frequency energy and, if not installed and used in accordance with the instructions, may cause harmful interference to radio communications.

However, there is no guarantee that interference will not occur in a particular installation. If this equipment does cause harmful interference to radio or television reception, which can be determined by turning the equipment off and on, the user is encouraged to try to correct the interference by one or more of the following measures:

Reorient or relocate the receiving antenna.

Increase the separation between the equipment and receiver.

Connect the equipment into an outlet on a circuit different from that to which the receiver is connected.

Consult the dealer or an experienced radio/TV technician for help.

This Class B digital apparatus complies with Canadian ICES-003.

This device complies with Industry Canada license-exempt RSS standard(s).

Operation is subject to the following two conditions

Last updated: 07/03/17

1) This device may not cause interference, and

2) This device must accept any interference, including interference that may cause undesired operation of the device.

© 2016 Bot Home Automation, Inc.

RING, ALWAYS HOME, and CHIME are trademarks of Bot Home Automation, Inc. Par la présente, Bot Home Automation, déclare que ce consommateur électronique est en conformité avec les exigences essentielles et autres

Dispositions pertinentes de la directive 1999/5 / CE. La déclaration de conformité peut être consultée à l'adresse www.ring.com/DoC.pdf.

Cet appareil est conforme à la partie 15 des règlements de la FCC et à la (les) norme (s) RSS exempte de licence d'Industrie Canada. L'opération est soumise

Aux deux conditions suivantes: (1) cet appareil ne doit pas causer d'interférences nuisibles et (2) cet appareil doit accepter toute interférence reçue, y compris les interférences susceptibles de provoquer un fonctionnement indésirable. Modifications apportées à cet équipement non autorisé par Bot Home

L'automatisation peut annuler son approbation pour l'exploitation.

Utilisez cet appareil uniquement dans des locaux secs. Ne couvrez pas l'appareil en cours de fonctionnement. Ne pas ouvrir le boîtier. Protégez cet appareil des rayons du soleil. N'utilisez pas ce

Périphérique à l'extérieur. En débranchant la fiche, l'appareil s'éteindra. Ne pas utiliser l'appareil si la fiche ou le boîtier est défectueux, il y a risque de choc électrique.

Avertissement: Les modifications ou modifications apportées à cet appareil qui ne sont pas expressément approuvées par la partie responsable de la conformité pourraient annuler l'autorisation d'utiliser l'appareil l'équipement.

Cet équipement doit être installé et utilisé à une distance minimale de 20 cm entre le radiateur et votre corps.

REMARQUE: Cet équipement a été testé et reconnu conforme aux limites d'un appareil numérique de classe B, conformément à la partie 15 des règles de la FCC. Ces limites sont conçues pour fournir une protection raisonnable contre les interférences nuisibles dans une installation résidentielle. Cet équipement génère, utilise et peut rayonner Radiofréquence et, s'il n'est pas installé et utilisé conformément aux instructions, peut causer des interférences nuisibles aux communications radio.

Cependant, rien ne garantit que des interférences ne se produiront pas dans une installation particulière. Si cet équipement cause des interférences nuisibles à la radio ou

Réception de télévision, qui peut être déterminée en éteignant et en éteignant l'appareil, l'utilisateur est encouragé à essayer de corriger Plus de mesures suivantes:

Réorientez ou déplacez l'antenne de réception.

Augmenter la séparation entre l'équipement et le récepteur.

Branchez l'équipement dans une prise sur un circuit différent de celui sur lequel le récepteur est connecté.





Consultez le revendeur ou un technicien radio / TV expérimenté pour obtenir de l'aide.

Cet appareil numérique de classe B est conforme à la norme ICES-003 du Canada.

Cet appareil est conforme aux normes RSS d'Industrie Canada exemptes de licence.

Le fonctionnement est soumis aux deux conditions suivantes

- 1) Cet appareil ne doit pas causer d'interférences et
- 2) Cet appareil doit accepter toute interférence, y compris les interférences pouvant entraîner un fonctionnement indésirable de l'appareil.

This equipment has been tested and found to comply with the limits for a Class B digital device, pursuant to part 15 of the FCC Rules. These limits are designed to provide reasonable protection against harmful interference in a residential installation. This equipment generates, uses and can radiate radio frequency energy and, if not installed and used in accordance with the instructions, may cause harmful interference to radio communications. However, there is no guarantee that interference will not occur in a particular installation. If this equipment does cause harmful interference to radio or television reception, which can be determined by turning the equipment off and on, the user is encouraged to try to correct the interference by one or more of the following measures:

- Reorient or relocate the receiving antenna.
- Increase the separation between the equipment and receiver.
- Connect the equipment into an outlet on a circuit different from that to which the receiver is connected.
- Consult the dealer or an experienced radio/TV technician for help.

FCC Radiation Exposure Statement

This device complies with FCC radiation exposure limits set forth for an uncontrolled environment and it also complies with Part 15 of the FCC RF Rules. This equipment must be installed and operated in accordance with provided instructions and the antenna(s) used for this transmitter must be installed to provide a separation distance of at least 20 cm from all persons and must not be co-located or operating in conjunction with any other antenna or transmitter. End-users and installers must be provided with antenna installation instructions and consider removing the no-collocation statement.

This device complies with Part 15 of the FCC Rules. Operation is subject to the following two conditions: (1) this device may not cause harmful interference, and (2) this device must accept any interference received, including interference that may cause undesired operation.

Caution!

Any changes or modifications not expressly approved by the party responsible for compliance could void the user's authority to operate the equipment.

Canada Statement

This device complies with Industry Canada's licence-exempt RSSs. Operation is subject to the following two conditions:

- (1) This device may not cause interference;
- (2) This device must accept any interference, including interference that may cause undesired operation of the device.

Le présent appareil est conforme aux CNR d'Industrie Canada applicables aux appareils radio exempts de licence. L'exploitation est autorisée aux deux conditions suivantes :

- (1) l'appareil ne doit pas produire de brouillage;
- (2) l'utilisateur de l'appareil doit accepter tout brouillage radioélectrique subi, même si le brouillage est susceptible d'en compromettre le fonctionnement.

The device meets the exemption from the routine evaluation limits in section 2.5 of RSS 102 and compliance with RSS-102 RF exposure, users can obtain Canadian information on RF exposure and compliance.

Le dispositif rencontre l'exemption des limites courantes d'évaluation dans la section 2.5 de RSS 102 et la conformité à l'exposition de RSS-102 rf, utilisateurs peut obtenir l'information canadienne sur l'exposition et la conformité de rf.

This transmitter must not be co-located or operating in conjunction with any other antenna or transmitter. This equipment should be installed and operated with a minimum distance of 20 centimeters between the radiator and your body.

Cet émetteur ne doit pas être Co-placé ou ne fonctionnant en même temps qu'aucune autre antenne ou émetteur. Cet équipement devrait être installé et actionné avec une distance minimum de 20 centimètres entre le radiateur et votre corps.

