



ring
VIDEO DOORBELL PRO

Setup and Installation Guide

2

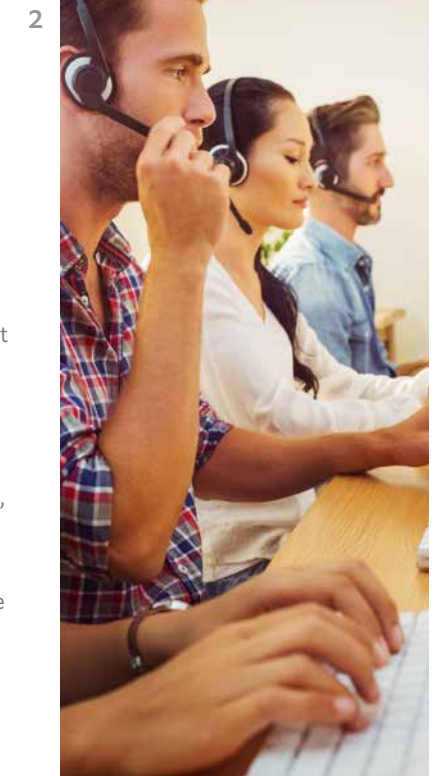
Welcome

Hi, I'm Jamie Siminoff, inventor of your Ring Video Doorbell Pro.



Congratulations on purchasing the world's most advanced doorbell!

With Ring, you'll always know who's at your door, whether you're across town, on vacation, or just can't come to the door. As my wife likes to say, "Ring is like caller ID for the front door."



If you need extra help...

Our support team is available 7 days a week, and our online help center is accessible 24/7.

Visit our online help center at: ring.com/help

Contact our support team directly at:

[800-656-1918](tel:800-656-1918)
help@ring.com

3



Step 1

Download the Ring app

The Ring app will walk you through the entire process outlined in this manual, but in case you like reading small print we've included this manual as well.

Visit: ring.com/app

Visit the online setup guide

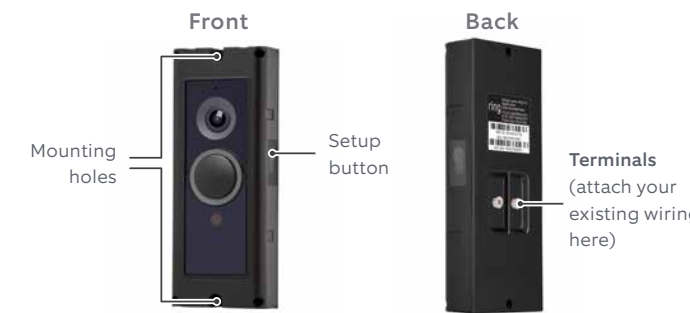
We have an online guide with videos and tutorials on setting up and using your Ring Video Doorbell Pro.

View the online setup guide at: ring.com/setup

4

Step 2

Say "Hello" to your Ring Video Doorbell Pro



4 Faceplates

Pick the one that best matches your home...or your mood. Change it any time.

5



Step 3

Check out all the cool stuff in the box

1 Ring Screwdriver - Use the Phillips end for tightening the screws that hold the doorbell wiring and the doorbell in place, and the star-shaped end for tightening the security screw.

3 Anchors - For concrete, stucco, or brick installs.

1 Drill Bit - Use to drill holes if using the anchors.

3 Screws - For attaching Ring Doorbell to your wall.

2 Security Screws - Use one to secure the faceplate.

2 Extra Wires - Use these if you have trouble attaching your existing wiring to the back of your Ring Doorbell.

2 Wire connectors - Use to connect the extra wire (above) to your existing wiring.

1 Pro Power Kit - Install the Pro Power Kit after installing your Ring Doorbell. It's got its own manual.

6



Step 4

Remove your existing doorbell

To get started, shut off power at the breaker.

Then remove your existing doorbell from the wall and disconnect the wires.

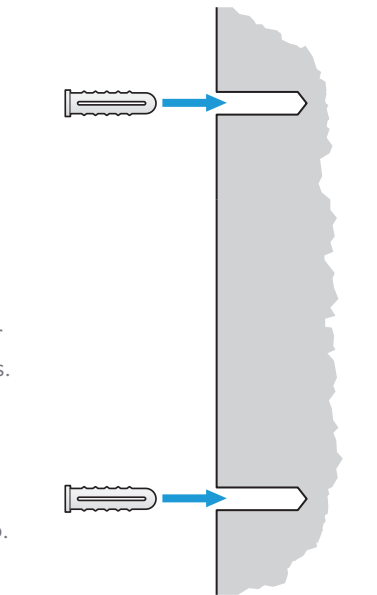
i As a reminder, this entire process is explained in a video inside the Ring app.

Step 5

Install anchors (on stucco, brick, or concrete)

On stucco, brick, or concrete, use the provided bit to drill two holes in your wall, and install the anchors.

If you're installing on wood or siding, put the anchors in that drawer of stuff you never use and skip this step.



8

Step 6

Wire your Ring Doorbell

Connect the wires from your wall to the back of your Ring Doorbell.

Then feed the wiring into your wall, and screw in your Ring Doorbell.

It doesn't matter which wire connects to which screw.

Step 7

Install the Pro Power Kit

Install the Pro Power Kit inside your home on your internal doorbell.

The instructions are provided in a separate manual.

Step 8

Follow the in-app setup process

In the Ring app, select the option to add a new device and, when prompted, select **Video Doorbell Pro**.

Step 9

Install the faceplate

Secure one of the faceplates with a security screw, and the star-shaped end of your Ring screwdriver.

Shared Users



To let family or friends answer live events and view recordings (if cloud recording is enabled), select **Shared Users** on the settings screen of the Ring app, and enter their email(s).

Motion Detection



Motion detection is disabled by default. To enable and customize motion detection, select **Motion Settings** on the settings screen of the Ring app.

Cloud Video Recording

This optional feature saves events captured by your Ring Doorbell Pro.

You can view, download, and share these events on any device running the Ring app, or at: ring.com/account

Live View

Select the **Live View** button on the settings screen of the Ring app to access a live stream of video from your Ring Doorbell Pro at any time.



When the button on your Ring Doorbell is pushed, or if motion is detected, you can perform the following actions:

- Disable/enable your microphone
- Mute/unmute sound in the app
- Zoom in/out
- Access the Ring Plus menu

- RING ALERTS You can toggle alerts for rings or motions on or off in the Ring app.
- MOTION ALERTS

The front light on your Ring Doorbell Pro uses various patterns to communicate messages.

Here are some common ones:

- In Setup Mode** White Spinning
- Powered** White Solid
- Front Button Pushed** Blue Spinning
- Ring Speaker Enabled** Blue Solid
- Updating software** White Flashing



For additional help, visit: ring.com/help

For immediate assistance, we're available 7 days a week at:

Domestic: 1-800-656-1918
International: +1 310-929-7085
help@ring.com

ring 1523 26th St.
Santa Monica, CA 90404

CE 0682 Hereby, Bot Home Automation, declares that this consumer electronic is in compliance with the essential requirements and other relevant provisions of Directive 1999/5/EC. The declaration of conformity may be consulted at www.ring.com/DoC.pdf.

Protect the device from direct sunlight. Install the device at dry locations and protect it against rain and humidity. The device may not get contact to salt water or other conductive liquids. The device must be charged only within a building in a dry state.

Caution: Risk of explosion if battery is replaced by an incorrect type.

Dispose of used batteries according to the instructions.

© 2016 Bot Home Automation, Inc.

RING, ALWAYS HOME, and CHIME are trademarks of Bot Home Automation, Inc.

Last updated: 03/15/16

CAUTION
RISK OF EXPLOSION IF BATTERY IS REPLACED BY AN INCORRECT TYPE. DISPOSE OF USED BATTERIES ACCORDING TO THE INSTRUCTIONS.

Federal Communication Commission Interference Statement

This equipment has been tested and found to comply with the limits for a Class B digital device, pursuant to Part 15 of the FCC Rules. These limits are designed to provide reasonable protection against harmful interference in a residential installation. This equipment generates, uses and can radiate radio frequency energy and, if not installed and used in accordance with the instructions, may cause harmful interference to radio communications. However, there is no guarantee that interference will not occur in a particular installation. If this equipment does cause harmful interference to radio or television reception, which can be determined by turning the equipment off and on, the user is encouraged to try to correct the interference by one or more of the following measures:

- Reorient or relocate the receiving antenna.
- Increase the separation between the equipment and receiver.
- Connect the equipment into an outlet on a circuit different from that to which the receiver is connected.
- Consult the dealer or an experienced radio/TV technician for help.

FCC Caution: Any changes or modifications not expressly approved by the party responsible for compliance could void the user's authority to operate this equipment.

This device complies with Part 15 of the FCC Rules. Operation is subject to the following two conditions: (1) This device may not cause harmful interference, and (2) this device must accept any interference received, including interference that may cause undesired operation.

This device and its antenna(s) must not be co-located or operating in conjunction with any other antenna or transmitter.

IMPORTANT NOTE:

FCC Radiation Exposure Statement:

This equipment complies with FCC radiation exposure limits set forth for an uncontrolled environment. This equipment should be installed and operated with minimum distance 20cm between the radiator & your body.

This device complies with Industry Canada's licence-exempt RSSs. Operation is subject to the following two conditions:

- (1) This device may not cause interference; and
- (2) This device must accept any interference, including interference that may cause undesired operation of the device.

Le présent appareil est conforme aux CNR d'Industrie Canada applicables aux appareils radio exempts de licence. L'exploitation est autorisée aux deux conditions suivantes : (1) l'appareil ne doit pas produire de brouillage, et (2) l'utilisateur de l'appareil doit accepter tout brouillage radioélectrique subi, même si le brouillage est susceptible d'en compromettre le fonctionnement.

High Power Radars: High power radars are allocated as primary users (meaning they have priority) in the 5250MHz to 5350MHz and 5650MHz to 5850MHz bands. These radars could cause interference and/or damage to Wireless LAN devices used in Canada.

Les utilisateurs de radars de haute puissance sont désignés utilisateurs principaux (c.-à-d., qu'ils ont la priorité) pour les bandes 5250 - 5350 MHz et 5650 - 5850 MHz. Ces radars pourraient causer du brouillage et/ou des dommages aux dispositifs LAN-EL.

IMPORTANT NOTE:

IC Radiation Exposure Statement:

This equipment complies with IC RSS-102 radiation exposure limits set forth for an uncontrolled environment. This equipment should be installed and operated with minimum distance **20cm** between the radiator & your body.

Cet équipement est conforme aux limites d'exposition aux rayonnements IC établies pour un environnement non contrôlé. Cet équipement doit être installé et utilisé avec un minimum de 20cm de distance entre la source de rayonnement et votre corps

CAN ICES-3 (B)/NMB-3(B)