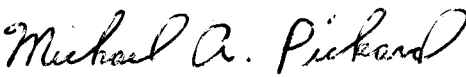


TYPE OF EXHIBIT:	INSTALLATION AND OPERATING INSTRUCTION MANUAL
FCC PART:	2.1033 (c)(3)
MANUFACTURER:	RITRON, INC.
MODELS:	JBS-446D
TYPE OF UNIT:	UHF-FM 2-Way Desk Top Radio
FCC ID:	AIERIT37-446D
DATE:	October 6, 2014

Included in this exhibit is a draft copy of the User Manual for RITRON Model JBS-446D UHF-FM 2-Way Desk Top Radio.

This manual provides the end user with installation and operating instructions.

SIGNED:



Michael A. Pickard - Project Engineer



Display-Series Two-Way Base Station Owner's Manual

Go Beyond Normal Limits...SM

RITTRON[®]

WIRELESS SOLUTIONS

**RUGGED, PROFESSIONAL TWO-WAY BASE RADIOS
ALWAYS THERE...ALWAYS READY...ALWAYS ONSM**

- 114 UHF and 27 VHF Table Frequencies for Easy Field Programming
- Built-in Quiet Call[®] and Digital Quiet Call[®] Interference Eliminator
- Up to 10 Channel Capability
- 12 VDC or Wall Outlet 120 VAC Operation
- NOAA Weather Channel Feature (VHF only)
- Emergency Weather Alert Feature (VHF only)
- Easy-to-Hear High Audio Output
- Call Tone
- "Z" Button - Programmable Soft Key
- 2-Tone Encode / Decode
- DTMF ANI Encoding
- Channel Scan
- 2 Watts of Power
- 2013 FCC Narrowband Compliant



ACCESSORIES



JBSK-12
12-Volt Adapter Kit



RHD-6X
Behind the Ear Headset



RHD-8X
Single Earbud



Ram-1545
**Magnet-mounted
Dual-band Antenna**



RSP-5
5-Watt External Speaker



RM-7
Hand Microphone

OPTIONAL REPLACEMENT ACCESSORIES:

TO ORDER CALL 800-USA-1-USA

AFB-1545Molded Flex, Dual-band Replacement Antenna

RAM-I545.....Magnet-mounted, Dual-band Antenna w / BNC

RPS-IB.....Replacement 110 VAC Power Supply

CCL-M12 VDC, Cigarette Lighter Adaptor

JBSK-I212 VDC, Adaptor Kit

REP-2Low Profile Earphone

RHD-IX.....Single Ear Headset

RHD-4X.....Dual Ear Headset

RHD-6X.....Lightweight Behind-the-head Earset w / In-line PTT

RHD-8X.....Lightweight Earbud w / mic and In-line PTT

RSM-3XA.....Remote Speaker Microphone

RM-7Hand Microphone & Hang-up Bracket

RSP-5External Speaker w / 5 Watt Audio Capability

JBS-MMK....Mobile Mounting Kit

(Does not include screws to mount bracket to wall or vehicle)

Call RITRON for a complete listing.

TABLE OF CONTENT

<u>DESCRIPTION</u>	<u>PAGE</u>	<u>DESCRIPTION</u>	<u>PAGE</u>	<u>DESCRIPTION</u>	<u>PAGE</u>
ACCESSORIES		FIG-6: NOAA Frequencies	11	FCC & IC LICENSE REQUIRED	
Optional Accessories	ii	NOAA Weather Alert Feature	11	Licensing.....	20
INTRODUCTION		Using the “Z” Button to Access NOAA Weather ..	11	Safety Standards	20
“Display Series” Model Numbers	1	RADIO PROGRAMMING		How to Obtain an FCC Radio License.....	20
Basic Features.....	1	FIG-7: How to Place the Radio in Program /		Industry Canada Regulations.....	20
2013 FCC Narrowband Mandate.....	2	Readout Mode	12	Service.....	20
CONTROL & OPERATION	3	How to Readout Field Programmed		LIMITED WARRANTY	21
FIG-1: Radio Controls and Connectors.....	3	Frequency & Tone Codes.....	12	ADDENDUM TO MANUAL	
OPERATION		How to Field Program Frequency and		JBS-146i-A and JBS-446D-A Instructions	
FIG-2: Volume Level Indicator.....	4	Tone Codes	13	Auto Turn On When Power Restored.....	22
ON-OFF / Volume Adjust	4	Table 1: Programmable Frequency Codes.....	14	FIGURES:	
Channel Selection.....	4	Table 2: Programmable QC Tone Codes.....	15	1. Radio Controls and Connectors.....	3
Receive	4	Table 3: Programmable DQC Codes	15	2. Volume Level indicator	4
QC and DQC Tone Codes		Table 4: Radio Feature Codes.....	15	3. Transmit / Busy Lamp	5
(Interference Eliminator Codes).....	5	How to Field Program Radio Feature Codes.....	15	4. 2-Tone Call Alert	8
Squelch Modes.....	5	Table 4: Radio Feature Codes.....	15	5. Selecting Your Local NOAA Weather	
Transmit	5	How to Delete a Channel.....	16	Frequency.....	11
FIG-3: Transmit Busy Lamp	5	PC Programmable Features	16	6. NOAA Frequencies	11
Radio Alert Tones.....	6	!! CAUTIONS —ALL RADIOS!!		7. How to Place the Radio in Program /	
Optional Alert Tones	6	Observe Caution in the Following Environments		Readout Mode	12
Channel Scan Operation.....	7	to Maximize the Life of Your Radio Equipment....	17		
2-Tone Decode Operation.....	8	Exposure to Radio Frequency Energy	17		
FIG-4: 2-Tone Call Alert	8	TROUBLESHOOTING	18		
“Z” Button - Programmable Soft Key	9	SPECIAL APPLICATION			
NOAA WEATHER RADIO FEATURE		How to Field Program 2-Tone Encode Codes.....	19		
How to Select Your Local NOAA Weather		for GateGuard Applications, go to			
Frequency	10	www.ritron.com/pdf/gg_07.pdf			
NOAA Weather Feature	10	How to Send a 2-Tone Code	19		
FIG-5: Selecting Your Local NOAA Weather		TABLE 5: Programmable 2-Tone Encode Code..	19		
Frequency	11				

INSPECTION

Make sure the package includes:

- “Display Series” base radio
- Antenna
- RPS-1B Wall Mounted Power Supply

Examine the equipment immediately after delivery and report any damage to your shipping company.

INTRODUCTION

THANK YOU FOR CHOOSING RITRON

Congratulations on your purchase of the “Display Series” base station. Your new radio is the result of Ritron’s more than 30 years history of designing, manufacturing, and supplying reliable, professional wireless communication products. Ritron wireless products will improve the operation, safety, and profitability of any organization by providing instant voice communications between employees throughout the workplace.

“DISPLAY SERIES” MODEL NUMBERS

VHF MODELS: JOBCOM & RITRON

JBS-146i	(Jobcom)	(2-W, 10 Ch)
JBS-146i-A	(Jobcom)	(2-W, 10 Ch)
JBS-146D-BC	(Jobcom)	(2-W, 10 Ch)
JBS-146D-CANADA	(Jobcom)	(2-W, 10 Ch)
PBS-146D-BC	(Ritron)	(2-W, 10 Ch)
PBS-146D-CANADA	(Ritron)	(2-W, 10 Ch)

UHF MODELS: JOBCOM & RITRON

JBS-446D	(Jobcom)	(2-W, 10 Ch)
JBS-446D-A	(Jobcom)	(2-W, 10 Ch)
JBS-446D-CANADA	(Jobcom)	(2-W, 10 Ch)
PBS-446D	(Ritron)	(2-W, 10 Ch)
PBS-446D-CANADA	(Ritron)	(2-W, 10 Ch)

The model number located on the back of the radio case indicates its operating band.

VHF radios are designed to operate on up to ten channels within the 24 MHz band between factory standard 150 and 174 MHz.

UHF radios are designed to operate on up to ten channels within the 20 MHz band between factory standard 450 and 470 MHz.

BASIC FEATURES

This manual covers Ritron JBS / PBS “Display Series” base stations. A rugged, programmable two-way desktop base station designed to operate in a professional FM communications band (VHF or UHF business available). Each radio is equipped with these features:

- **Push-button Operating Controls.** The Push-To-Talk (PTT), Channel, On / Volume Up, Volume Down / Off and the special feature “Z” button controls are conveniently located on the face of the radio.
- **Channel Display.** The LED display will show the current operating channel, and contains a transmit / busy lamp. The display is also used to indicate volume level and paging decode status on radios programmed for 2-Tone paging operation.
- **10-channel Capability.** Up to 10 channels can be programmed to contain a unique set of operating frequencies and options.
- **QC (Quiet Call) and DQC (Digital Quiet Call) Interference Eliminator Codes.** Each channel can be programmed from a list of 50 QC sub-audible or 104 DQC digital privacy codes.
- **Field programming.** The “Display Series” base radio allows you to quickly select and program each channel individually while in the field without the need for a PC programmer. Each channel can be programmed to one of 27 VHF or 114 UHF channel table frequencies and one of 50 QC or 104 DQC interference eliminator codes, or you can delete a channel altogether.
- **Channel Scanning.** Channel Scan allows scanning of all channels programmed into the radio, and can be turned On and Off through Field programming. The scan channel has many features, including Priority Scanning and Busy Channel Blocking.

INTRODUCTION

- **Special Feature “Z” button.** The “Z” button is capable of performing one of a variety of functions. These functions can be PC programmed by your dealer OR certain functions (in bold) can also be assigned to the “Z” button by the end user. “Z” button function options: **Channel Scan, Weather Channel, Monitor, Send 2-Tone Code*, Send Call Tone, Send DTMF ANI** (PC programmable by your Ritron dealer).

These features require special PC programming:

See your **Ritron** dealer or contact **Ritron** directly for PC programming of these optional features.

- **2-Tone Decode.** Each channel can be programmed for 2-Tone paging decode within a frequency range of 300-1500 Hz. Additional 2-tone paging features include Group Call, All Call, automatic reset, and transpond alert.
- **2-Tone Encode.** Each channel can be programmed for 2-Tone paging encode within a frequency range of 300-1500 Hz. (See page 19)
- **DTMF ANI.** Each channel can be programmed to transmit a unique DTMF ANI string with the “Z” button programmed for DTMF ANI.
- **Squelch Adjustment.** Squelch sensitivity can be programmed on a per channel basis to meet your specific needs.
- **Alert Tones.** Each channel is programmable for a variety of alert tones that include RX courtesy beep, TX clear to talk beep, busy channel lockout alert, last active channel marker, and channel scanning indicator.



- **Weather Channel.** VHF models can be programmed to receive your local NOAA weather radio broadcast. The Weather channel can be turned On and Off through Field Programming.
- **Weather Alert.** VHF models can be programmed to alert you when the National Weather Service detects threatening weather conditions. The Weather Alert feature can be turned On and Off through Field Programming.

2013 FCC NARROWBAND MANDATE

On January 1, 2013, pursuant to the FCC Narrowband mandate, Ritron will no longer be allowed to manufacture wide band (25 kHz) capable radio equipment that operates in the frequency bands from 150 MHz to 512 MHz. All Ritron “Display Series” Base Radios are FCC certified for narrowband operation, so the only change required is the elimination of wideband operation.

To meet the FCC narrowband mandate by Jan 1, 2013, Ritron will initiate the transition process of manufacturing narrowband only compliant radio equipment beginning July 1, 2012. After that date, customer orders will begin to be filled with radios manufactured for FCC narrowband compliance, with no provisions for wideband operation except where allowed by FCC rule. These radios will be clearly marked as “FCC Narrowband Compliant”. The narrowband manufacturing process will proceed gradually on a model by model basis, with all models narrowband compliant by the January 1, 2013 deadline.

For a complete list of Ritron radios capable of narrowband operation; a Ritron FAQ on the subject, and various links on the FCC website dealing with Narrowbanding go to:

www.ritron.com/narrowband

If you have any questions contact us at 1-800-872-1872

CONTROL & OPERATION

1 CHANNEL DISPLAY

The channel display will indicate the current operating channel. When the Scan Channel is selected the display will rapidly flash the channels being scanned, and will stop when a channel is received. The channel display also indicates the volume level between 0-9 whenever a volume control is pressed.

2 CHANNEL SELECTOR

Press the Channel Selector button and the radio will advance the channel. The Channel BEEP will be heard any time Channel 1 is selected. When the Scan Channel is selected the radio will sound the Scan BEEP and begin scanning.

3 AUDIO ACCESSORY JACK

The audio accessory jack is used to plug in earphone options and, in conjunction with the microphone jack, to connect an optional remote speaker / microphone or a single-ear or dual-ear headset. This jack is also used for PC programming.

4 MICROPHONE JACK

The microphone jack is used to connect optional external microphones and, in conjunction with the audio accessory jack, to connect an optional remote speaker / microphone, or a single-ear or dual-ear headset.

5 SPEAKER

The speaker allows you to hear calls on your channel.

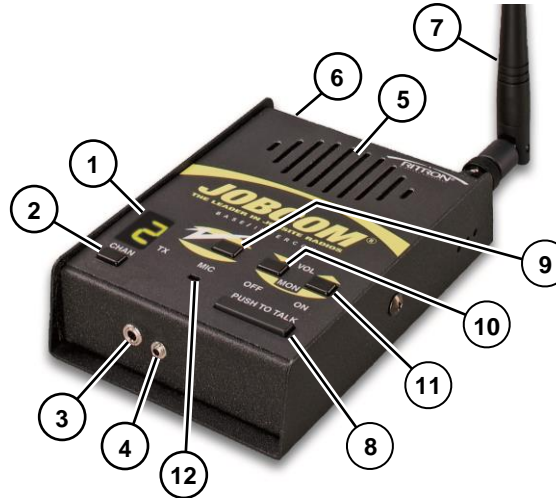


FIG-1: RADIO CONTROLS & CONNECTORS

6 POWER CONNECTOR (TOP END OF CASE)

The power connector on the top end of the radio is used to connect power to the unit, either an external 12 VDC supply or the RPS-1B cube power supply included with the radio.

7 ANTENNA

The flexible antenna radiates and receives radio signals. The antenna connects to a BNC type connector located on the top end of the radio.

NOTE: The AFB-1545 antenna furnished with the radio will work with VHF and UHF radios.

8 PUSH-TO-TALK SWITCH (PTT)

Press and hold the PTT when transmitting; release it to receive.

9 "Z" BUTTON - PROGRAMMABLE SOFT KEY

The "Z" button is capable of performing one of a variety of functions. These functions can be PC programmed by your Ritron dealer OR certain functions can be assigned to the "Z" button by the end user. Function options: Channel Scan, Weather Channel, Monitor, Send 2-Tone Code, Send Call Tone, Send DTMF ANI (PC programmable by your Ritron dealer).

10 VOLUME DOWN / OFF

Press the Volume Down / Off button to decrease volume. The channel display will indicate the volume level as long as the Volume Down / Off button is pressed. To turn Off the unit, press and hold this button until the speaker sounds a double beep.

11 ON / VOLUME UP

To turn the unit On, press the On / Volume Up button; the speaker will sound the Channel BEEP. If the radio turns on to the Scan Channel it will sound the Scan BEEP. Once the radio is On, press this button to increase volume. The channel display will indicate the volume level as long as the On / Volume Up button is pressed.

12 MICROPHONE

The microphone allows your voice to be heard in transmissions to other radios. Speak in a normal tone; shouting does not improve your listeners' reception.

OPERATION



As long as the Volume Up button is held down the volume will increase and the display will indicate the volume level as number between 0 and 9.

When the Volume Down button is held down the volume will decrease and the display will indicate the volume level as a number between 9 and 0.

FIG-2: VOLUME LEVEL INDICATOR

ON-OFF VOLUME ADJUST

To turn on the radio - press the On / Volume Up button. The radio will sound the Channel Beep. If the radio turns on to the Scan Channel it will emit the Scan Beep. The radio will turn on to the channel that was selected when it was last turned off.

NOTE: JBS-146i-A and JBS-446D-A turn on automatically any time power is applied to the radio.

To adjust the volume - press the volume up or the volume down button until you reach the desired level. The display will show the volume level on a 0-9 scale as long as the volume button is pressed, and you will hear any received broadcasts on the channel.

To turn off the radio - press and hold the Off / Volume Down button until a two tone “turn-off” beep is heard. For instant turn-off, press the PTT button while holding the Off / Volume Down button.

CHANNEL SELECTION

To change channels - press and release the Channel Selector button. The radio will increment the channel, and the Channel Display will show the new operating channel. If the highest channel number is selected and you press the Channel Selector

button, the radio resets to channel 1 and the Channel Beep is heard on the speaker.

If the Scan Channel is selected - the radio will sound the Scan Beep and the Channel Display will rapidly flash the channel numbers as they are scanned. If a signal is received the channel display will indicate the channel number, and when the received signal is removed the radio will wait briefly, sound the Scan Beep, then scanning will resume as normal.

If the Weather Channel is selected - on a VHF radio the display will light a single segment of the display that indicates which of the seven NOAA frequencies is monitored. See the “NOAA Weather Radio Feature” section on page 10 for details.

RECEIVE

To hear calls from other users - adjust the volume as desired. The radio can only receive broadcasts while the Push-To-Talk button is not being pressed. Whether or not you hear these broadcasts depends upon the squelch settings.

There are three standard squelch modes that can be used in the JBS / PBS “D-Series” base station.

- **Carrier Squelch** lets you hear all broadcasts on your channel strong enough for the radio to detect, and silences noise.
- **Tone Squelch** uses the QC or DQC “tone squelch” format available on the JBS / PBS. This allows you to screen out “on-channel” broadcasts that do not carry the correct code programmed for the radio.
- **2-Tone Paging** can be used in conjunction with either carrier or tone squelch to block out all calls except those sent specifically to your radio. When the unique 2-tone sequence programmed into the radio is decoded, the radio will emit a series of ring tones similar to a telephone.

OPERATION

When Carrier or Tone Squelch is selected by the user, all channels will operate in that mode. The JBS / PBS “D-Series” base station will operate in tone squelch mode when it is first turned on.

QC AND DQC TONE CODES

Tone codes filter out static, noise and reduce unwanted “chatter” on radio channels. When you operate on a frequency with a tone code, you screen out most interference. This allows you to communicate with less interference and to hear only those users in your radio group.

IMPORTANT! All radios in the talk group must operate on the same frequency and tone code.

SQUELCH MODES

To activate Tone Squelch or Carrier Squelch and to Monitor the channel - you may either simultaneously press both the On / Volume Up and Volume Down / Off volume buttons and hold briefly before releasing, or if the “Z” button is set for the monitor function (see page 15), then press the “Z” button and release. To advance to the next squelch mode simultaneously press both volume buttons, or press the “Z” button.

1. If the base station emits a **SINGLE** beep, then **Tone Squelch** is turned **ON** and you will only hear radio transmissions on that channel with the same QC or DQC tone codes as your base station.
2. If the base station emits a **DOUBLE** beep, then you are in **Carrier Squelch** and you can **Monitor** all broadcasts on the channel. To exit **Carrier Squelch** press and hold both volume buttons until you hear the **SINGLE** beep.

3. If the base station emits a **TRIPLE** beep, then you are in **2-TONE DECODE**. You will only hear broadcasts that first send your two unique paging tones. If you are unable to set the base station, you have selected a channel that is not programmed for 2-Tone Decode.

If you are unable to activate Carrier Squelch - the base station has been programmed for **Monitor Lockout**. See your Ritron dealer or contact Ritron directly to disable this option.

Using the “Z” button for Monitor - the JBS / PBS “D-Series” base station “Z” button can be programmed for **Monitor** mode.

To use the “Z” button for Monitor see ‘How to Field Program Radio Feature Codes’ on page 15.

Note: It is possible that the beginning of a call might be missed while the base station is in battery saver mode. If this happens, ask the caller to repeat the message.

TRANSMIT

Normally, you should monitor the channel before transmitting and talk only when the channel is clear.

To transmit - hold down the Push-To-Talk button and, with the radio at least 6 inches away, talk into the microphone. Speak in a normal tone, since talking louder will not improve the listener’s reception.

Keep talk times as short and infrequent as possible to allow others to use the channel.



A Transmit / Busy Lamp in the lower right corner of the Channel Display lights whenever the transmitter is activated and blinks when the channel is busy.

FIG-3: TRANSMIT / BUSY LAMP

OPERATION

RADIO ALERT TONES

The base station responds to certain instructions by sounding a beep or series of tones. These tones can tell you that the radio is working as you expect.

Power On / Self Check “OK”

When it is first turned on, the base station runs a quick “self test” to confirm basic functions. When complete the base station will emit the Channel Beep and the Channel Display will show the operating channel. The base station is then ready to use.

Error Tones

However, if the “self test” detects a diagnostic error, an error tone sounds. The error tone indicates the base station frequency synthesizer is malfunctioning. Turn off the radio and try again.

The error tone will also sound if a channel has been programmed for an invalid frequency.

A long, low-pitched tone means the battery voltage is too low to operate the base station. If you cannot correct the problem, consult an authorized Ritron service center or Ritron directly.

Squelch Mode

When you press and hold both Volume buttons at the same time, a **SINGLE** beep will sound to indicate that tone squelch is on. A **DOUBLE** beep means that carrier squelch is on. If the channel is programmed for 2-Tone Code, a **TRIPLE** beep indicates that the base station is in 2-Tone Decode mode.

Transmitter Time Out

A low tone followed by a higher-pitched tone sounds and the transmitter automatically shuts off if you hold down the PTT button longer than 60 seconds.

Battery Alert Tone

In battery powered installations: Once the battery voltage drops below the required “operating voltage” the radio emits a long, low tone and turns itself off.

OPTIONAL ALERT TONES

The “Display Series” base station can be programmed using the RITRON PC Programmer for optional alert tones. See your Ritron dealer or contact Ritron directly for programming of these options.

Courtesy Beep

A short tone sounds at the end of each received transmission to indicate that the channel is clear and you may transmit.

Busy Channel TX Inhibit

If a user is transmitting on your radio frequency without your tone, you will not be allowed to transmit. The base station will beep a series of long, low tones while the PTT is held down (like a busy signal).

Transmit Clear to Talk Beep

A short tone sounds after the PTT has been pressed to indicate that the base station is ready for you to begin talking.

OPERATION

CHANNEL SCAN OPERATION

Channel scanning allows you to listen to broadcasts on your radio channels. The JBS / PBS “Display-Series’ base station will scan all channels programmed into the radio except the NOAA Weather Channel.

How Scanning Works

Using the Channel Selector button, select the Scan channel. The base station sounds the Scan Beep, and then repeatedly checks each channel in the scan list. The channel display will show the channel numbers as they are scanned.

When receiving a call on a channel being scanned, the base station will stop scanning to let you hear communications on that channel. After the transmission has ended the base station will pause before it resumes scanning to allow you time to respond.

When transmitting from the Scan channel, the base station will go to the last channel on which a signal was received, then transmit. After you release the PTT the base station will pause to allow time for a response, and then resume scanning.

Temporary Busy Channel Blocking

If one of the channels in the scan list is so busy that you want to temporarily block it out, press the Channel Selector button while the base station is stopped on the channel to be blocked and hold it until scanning resumes. The blocked channel will now be skipped in the scan list.

The blocked channel will be returned to the scan list if the base station is turned off and then back on again, or when the radio channel is changed using the Channel Selector button. The first channel in the scan list cannot be blocked.

To turn Channel Scan On / Off see “How to Field Program Radio Feature Codes” on page 15.

Last Channel Scanned Alert Tone

When changing channels with the Channel Selector button, an alert tone will sound to indicate the last channel that received a message when the radio was scanning. This will identify the channel on which the last message was received, and allow uninterrupted transmission on that channel without the constraints of scanning. You can then press the Channel Selector button to return to the scan channel.

Using the “Z” Button for Scan

The special feature “Z” button can be programmed to initiate scanning. The UHF JBS-446D and PBS-446D base stations are programmed for “Z” button Scan channel operation from the factory.

To select the Scan Channel, press the “Z” button. The radio sounds the Scan Beep, and scanning operation is initiated. The Scan channel will not be accessible with the Channel Selector button when the base station is programmed for ‘Z’ button Scan channel operation.

To return to normal channel operation, press the Channel Selector button and the base station will return to channel 1.

To temporarily block a busy channel while scanning, press the “Z” button while the base station is stopped on the channel to be blocked and hold it until scanning resumes. The blocked channel will now be skipped in the scan list.

Priority Scanning (Optional)

The “Display Series” base station can be optionally programmed for priority scanning. Priority Scan allows you to periodically monitor a Priority Channel, even if the base station has stopped on another channel. This will prevent missed calls on the primary operating channel when in scan mode.

OPERATION

With Priority Scan enabled:

- The first channel in the scan list is the Priority Channel.
- The radio checks the Priority Channel every two seconds to check for activity. This time is programmable and can be set for 1 - 8 seconds.
- The base station can be programmed to transmit only on the Priority Channel when scanning.
- The base station can be programmed to sound a Priority Channel Beep whenever the base station receives on the Priority Channel when scanning.

See your Ritron dealer or contact Ritron directly for PC programming of this option.

2-TONE DECODE OPERATION

To use 2-Tone Decode the “Display Series” base station must be PC programmed for this option, the radio does not operate with 2-Tone decoding as it is received from the factory. See your Ritron dealer or contact Ritron directly for PC programming of this option. This feature allows the base station to act as a monitor receiver.

To activate 2-Tone Decode you must first select a radio channel that has been PC programmed for 2-Tone Decode. The factory default setting will automatically activate 2-Tone Decode any time the 2-Tone Decode channel is selected. If not, simultaneously press both of the volume buttons and hold briefly before releasing. The radio sounds three beeps when 2-Tone Decode is turned on.

If you are unable to set the base station, you have selected a channel that is not programmed for 2-Tone Decode.

When the base station decodes an incoming 2-Tone signal it will emit a “ring” tone similar to a telephone and the display will show a “C” to indicate that a call has been received. You can now proceed with normal two-way communication until the 2-Tone Decode feature has been reset. The “ring” tone will sound every time a 2-Tone signal is decoded.



The display will show a “C” to indicate that a 2-Tone call has been received.

FIG-4: 2-TONE CALL ALERT

To reset 2-Tone Decode after receiving a call: Simultaneously press both of the volume buttons and hold briefly before releasing. The base station sounds three beeps when 2-Tone Decode is reset and the display will show the channel number. The base station can be optionally programmed to automatically reset if a call is not answered within 15 seconds.

2-Tone Decode channels can be programmed to:

- Automatically set the base station for 2-Tone Decode mode whenever the channel is selected.
- Automatically reset if a 2-Tone Decode is not answered within 15 seconds.
- Automatically place the receiver into carrier squelch “monitor” mode whenever a 2-Tone Decode has been decoded.
- Send a transpond tone back to the transmitting station to confirm that the 2-Tone signal has been received.
- Decode an All Call tone.
- Decode a Group Call if the first tone is sent for an extended period of time.

OPERATION

“Z” BUTTON - PROGRAMMABLE SOFT KEY

The “Z” button is capable performing one of a variety of functions. These functions can be PC programmed by your dealer OR certain functions can also be assigned to the “Z” button by the end user. Function options: Channel Scan, Weather Channel, Monitor, Send 2-Tone Code, Send Call Tone, Send DTMF ANI (PC programmable by your Ritron dealer). Refer to the Dealer PC programmer HELP file for specific “Z” button programming instructions.

To assign the “Z” Button for one of these features:

- Scan
- Weather
- Monitor
- Call Tone
- Pre-set 2-Tone Encode

see “How to Field Program Radio Feature Codes” on page 15.

SCAN

The UHF PBS-446D and JBS-446D base stations are programmed for “Z” button Channel Scan operation from the factory.

See “Using the “Z” Button for Scan” on page 7.

WEATHER

The “Z” button on the VHF JBS-146i base stations are programmed for Weather Channel operation from the factory. This option is only available on VHF band radios.

See “Using the “Z” Button for Weather Channel” on page 11.

MONITOR

The “Z” button can be programmed to function as a **MONITOR** button. See page 15 to select this option.

See “**Squelch Modes**” to Set Carrier, Tone, or 2-Tone Paging Functions on page 5.

CALL TONE

When the “Z” button is pressed the radio transmits a Call Tone on the channel currently selected. If you continue to hold the “Z” button down, the transmitter will remain active and voice communications can be made after the Call Tone has been sent.

This feature is helpful when the receiving base station is in a high noise environment and may not hear a voice transmission.

2-TONE ENCODE OPERATION

Pressing the “Z” button causes the base station to transmit a unique 2-Tone Code that can be programmed separately for each channel. The 2-Tone Code will be heard on the speaker, and if you continue to hold the “Z” button down, the transmitter will remain active and voice communications will be possible after the 2-Tone Code has been sent.

- Use the PTT button to transmit messages without the 2-Tone Code.
- If a channel is not programmed to encode a 2-Tone signal the “Z” button will function as a PTT button.

See Special Application for Field Programming the 9 Pre-set 2-Tone Codes on page 19.

DTMF ANI ON TRANSMIT

This feature must be PC Programmed by your Ritron dealer.

Pressing the “Z” button causes the radio to transmit a unique DTMF ANI string that can be programmed separately for each channel. The DTMF string will be heard on the speaker, and if you continue to hold the “Z” button down, the transmitter will remain active and voice communications will be possible after the DTMF ANI string has been sent.

NOAA WEATHER RADIO FEATURE



NOAA Weather Radio (NWR) is a nationwide network of radio stations broadcasting continuous weather information direct from a nearby National Weather Service office. NWR broadcasts National Weather Service warnings, watches, forecasts and other hazard information 24 hours a day.

Working with the Federal Communication Commission's (FCC) Emergency Alert System, NWR is an "all hazards" radio network, making it your single source for comprehensive weather and emergency information. NWR also broadcasts warning and post-event information for all types of hazards—both natural (such as earthquakes and volcano activity) and environmental (such as chemical releases or oil spills).

Known as the "Voice of the National Weather Service," NWR is provided as a public service by the National Oceanic & Atmospheric Administration (NOAA), part of the Department of Commerce. NWR includes more than 750 transmitters, covering all 50 states, adjacent coastal waters, Puerto Rico, the U.S. Virgin Islands, and the U.S. Pacific Territories. NWR requires a special radio receiver or scanner capable of picking up the signal. Broadcasts are found in the public service band at these seven frequencies (MHz): 162.400, 162.425, 162.450, 162.475, 162.500, 162.525, 162.550.

HOW TO SELECT YOUR LOCAL NOAA WEATHER FREQUENCY (VHF MODELS ONLY)

The base station is shipped from the factory without a NOAA frequency selected. You must first select your local NOAA frequency to activate NOAA weather features. Follow steps 1-7 below.

VHF models of the JBS / PBS "Display Series" base station can hear weather forecasts from the National Weather Service which are broadcast on one of the seven NOAA weather frequencies. In some areas you may be able to receive more than one broadcast.

1. Follow the steps in FIG-5 on page 11 to place the radio into the Weather Frequency Select mode.
2. The base station will scan to the first NOAA frequency where a broadcast is present. The display will light a single segment to indicate the NOAA frequency per FIG-6 on page 11.
3. Monitor the channel for a few minutes to be sure it is the broadcast for your local area.
4. Press the "Z" button to scan for the presence of any other NOAA broadcasts, monitoring each broadcast and noting the frequency as indicated by the display.
5. Using the "Z" button, select the local NOAA frequency you would like your radio to operate on.
6. Turn the base station off by pressing the Volume Down / Off button.
7. When the base station is turned back on all weather features will operate on the selected NOAA frequency.

NOTE: If the base station is moved, for example, to another state you must re-train your base station with a new local NOAA frequency.

NOAA WEATHER FEATURE

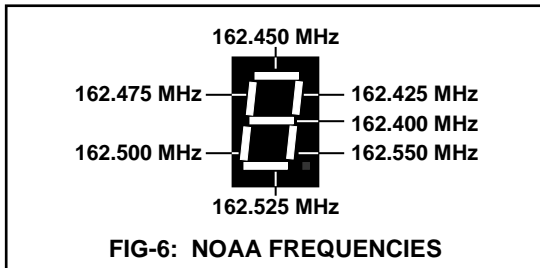
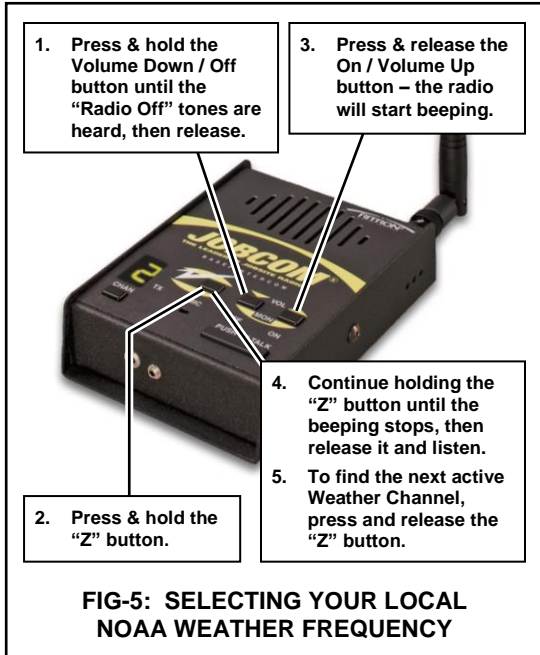
After you have selected a NOAA weather frequency on your VHF model base station, an extra channel is automatically created exclusively for listening to National Weather Service broadcasts.

Repeatedly pressing the Channel button will advance through your base station talk channels. NOAA Weather will be your last channel, and the display will light the segment representing the selected NOAA frequency.

If you do not want the NOAA Weather feature, it can be turned off through Field Programming.

To turn NOAA Weather Feature On / Off see "How to Program Radio Feature Codes" on page 15.

NOAA WEATHER RADIO FEATURE



NOAA WEATHER ALERT FEATURE

Once a NOAA weather frequency has been selected on your VHF model base station it will listen for emergency broadcasts from the National Weather Service, regardless of which channel you are on.

An alert tone will sound in the speaker, the display will show an "A" (as shown), and the National Weather Service emergency broadcast will be heard - advising you of threatening weather conditions.



NOTE: NOAA sends a test alert tone once each week. Your base station will respond to this alert.

To turn Weather NOAA Alert On / Off see "How To Field Program Radio Feature Codes" on page 15.

- Pressing the Channel button will return you to your normal talk channel.
- If you do not want the NOAA Weather Alert feature, it can be turned off through Field Programming, refer to page 15.

USING THE "Z" BUTTON TO ACCESS NOAA WEATHER

The VHF JBS-146i base stations are programmed for "Z" button NOAA Weather operation from the factory. This option is only available on VHF band base stations.

- To select NOAA Weather, press the "Z" button. The base station will scan to the 1st NOAA frequency where a broadcast is present. The display will light a single segment to indicate the NOAA frequency per FIG-6. If the base station has been pre-set for your local NOAA weather frequency, the base station will go directly to that frequency when the "Z" button is 1st pressed.
- With any subsequent press of the "Z" button the base station will scan to the next active NOAA frequency.
- When the "Z" button is programmed to access NOAA Weather, the feature will no longer be accessible with the Channel Selector button.
- To return to a normal talk channel operation, press the Channel Selector button. The base station will return to the last talk channel you operated on.

RADIO PROGRAMMING

IMPORTANT

To talk to other users in your group, all radios must be set to the same frequency and Interference Eliminator codes.

1. Press & hold the Volume Down / Off button until the "Radio Off" tones are heard, then release.

3. Press & release the On / Volume Up button – the radio will start beeping.



2. Press & hold the Push-to-Talk button.

4. Continue holding the Push-to-Talk button until the beeping stops, then release it and listen.

5. The radio will emit a triple tone: It is now in Program / Readout Mode.

FIG-7: HOW TO PLACE THE RADIO IN PROGRAM / READOUT MODE

HOW TO READOUT FIELD PROGRAMMABLE FREQUENCY & TONE CODES

In our example, channel 3 of a UHF radio is programmed to operate on the "Brown Dot" frequency of 464.500 MHz (Frequency code "04") with 100.0 Hz tone (Tone code "12").

P

1. Place the radio into Program / Readout Mode by following the instructions in FIG-7 at left. A "P" will appear on the LED display as you enter program mode.

RADIO IDENTIFICATION
 2878
 3878
 0848

2. Release the Push-to-talk button after the beeping has stopped. The radio will display a series of six characters for Radio Identification, with each character separated by a hyphen. The 1st two characters indicate the model number, the 3rd and 4th characters indicate the radio type, and the 5th and 6th characters indicate the firmware revision.

In this example: Model: 27
 Radio Type: 31
 Firmware Revision: 04

NOTE: Radio models with firmware revisions prior to 16.01 do not display the Radio Identification sequence.

CHANNEL
 18
 38

3. After the Radio Identification has been displayed the digit 1 will appear, followed by a hyphen, and the radio will emit a triple beep indicating that the radio is in program mode and channel 1 is selected.

4. Press the Channel Selector button to select the channel to be read out. The channel number will appear briefly on the display as you step through the channels. When you have settled on a channel a hyphen will appear across the center of the display to indicate that it is ready for readout.

FREQUENCY & TONE CODES
 0848
 1828

5. Press and release the On / Volume Up button. The radio will begin to display a series of four digits; with each digit separated by a hyphen. The 1st and 2nd digits indicate frequency code; see Table 1 on page 14. The 3rd and 4th digits indicate the tone code; see Table 2 on page 15.

If a 5th digit is displayed, the channel has been programmed for DQC and the last three digits indicate the DQC code; see Table 3 on page 15.

If more than 5 digits are displayed refer to page 19.

E

6. If the channel is PC-programmed for any frequency not listed in Table 1 on page 14, an error tone will sound and an "E" will appear on the display.

7. To readout another channel, repeat steps 4 through 6.

8. Turn the radio OFF and then ON again—the radio is now ready to use.

RADIO PROGRAMMING

HOW TO FIELD PROGRAM FREQUENCY & TONE CODES

To match other radios, the owner can select Frequency and Tone Codes from Tables 1, 2, and 3 on pages 14 and 15.

In our example we will program channel 3 of a UHF radio to operate on the "Brown Dot" frequency of 464.500 MHz (Frequency code "04") with 100.0 Hz tone (Tone code "12").

04	1. Refer to Table 1 on page 14 to determine the two digit frequency code and write it down.
12	2. Refer to Table 2 on page 15 to determine the two digit tone code for 100.0 Hz and write it down.
P	3. Place the radio into Program / Readout Mode by following the instructions in FIG-7 on page 12. A "P" will appear on the LED display as you enter program mode.
2-7-8	4. Release the Push-to-talk button after the beeping has stopped. The radio will display a series of six characters for Radio Identification, with each character separated by a hyphen. The 1st two characters indicate the model number, the 3rd and 4th characters indicate the radio type, and the 5th and 6th characters indicate the firmware revision.
3-7-8	
8-7-4-8	
	<p><u>In this example:</u> Model: 27 Radio Type: 31 Firmware Revision: 04</p>

1-8	5. After the Radio Identification has been displayed the digit 1 will appear, followed by a hyphen, and the radio will emit a triple beep indicating that the radio is in program mode and channel 1 is selected.
3-8	6. Press the Channel Selector button to <u>select the channel</u> to be programmed. The channel number will show briefly on the channel display as you step through the channels. When you have settled on a channel the display will show a hyphen to indicate that it is ready for programming.

0-9	7. Enter the 1st digit of the frequency code by clicking the PTT button until the channel display shows the desired number. Pause - the radio will sound a low tone and show a hyphen across the center of the display to indicate that it is ready to accept the next digit.
4-8	8. Enter the 2nd digit of the frequency code by clicking the PTT button until the channel display shows the desired number. Pause - the radio will sound a low tone and show a hyphen across the center of the display to indicate that it is ready to accept the next digit.
1-8	9. Enter the 1st digit of the tone code (or 1st digit of the DQC code) by clicking the PTT button until the channel display shows the desired number. Pause - the radio will sound a low tone and show a hyphen on the display to indicate that it is ready to accept the next digit.
2-8	10. Enter the 2nd digit of the tone code (or 2nd digit of the DQC code) by clicking the PTT button until the channel display shows the desired number. Pause - the radio will sound a low tone and show a hyphen on the display to indicate that it is ready to accept the next digit.
	11. FOR DQC CODES ONLY - Enter the 3rd digit of the DQC code by clicking the PTT button until the channel display shows the desired number. Pause - the radio will sound a low tone and show a hyphen on the display to indicate that it is ready to accept the next digit.
	12. Press and release the On / Volume Up to SAVE your programming entry. The LED display will briefly show the channel number you have just programmed and the radio will sound a triple beep to indicate that programming was successful.
E	NOTE: An error tone will sound if you attempt to save an incorrect code and an "E" will appear on the display. Turn the radio OFF, check the digits you are attempting to enter, then start over.
	13. To program another channel, repeat steps 6 through 12.
	14. Turn the radio OFF and then ON again—the radio is now ready to use.

- NOTES:**
- a. YOU MUST enter "44" to enter "No Code" interference eliminator to match radios not having tone codes. Refer to Table 2 on page 15.
 - b. If the radio does not sound a confirming triple tone when you attempt to enter Program / Readout Mode, the radio was factory or dealer customized to disable programming. Consult the radio owner or your dealer.

RADIO PROGRAMMING

TABLE 1: PROGRAMMABLE FREQUENCY CODES

VHF Business Band			
Code No.	MHz	Color Dot	Band Width
03	151.6250	Red Dot	12.5 †
04	151.9550	Purple Dot	12.5 †
05	151.9250		12.5 †
06	154.5400		12.5 †
07	154.5150		12.5 †
08	154.6550		12.5 †
09	151.6850		12.5 †
10	151.7150		12.5 †
11	151.7750		12.5 †
12	151.8050		12.5 †
13	151.8350		12.5 †
14	151.8950		12.5 †
15	154.4900		12.5 †
16	151.6550		12.5 †
17	151.7450		12.5 †
18	151.8650		12.5 †
24	151.7000		12.5
25	151.7600		12.5
26	152.7000		12.5 †
27	152.8850		12.5
28	152.9150		12.5
29	152.9450		12.5
30	151.5125		12.5
31	154.5275		12.5
32	153.0050		12.5
33	158.4000		12.5
34	158.4075		12.5
00	DELETE Code*		

Canadian VHF Business Band Models		
01	151.0550	25.0
02	151.1150	25.0

British Columbia VHF Models		
01	154.1000	25.0
02	158.9400	25.0

Canadian UHF Business Band Models		
01	458.6625	25.0
02	469.2625	25.0

UHF Business Band			
Code No.	MHz	Color Dot	Band Width
09	469.2625		12.5 †
10	462.5750	White Dot	12.5 †
11	462.6250	Black Dot	12.5 †
12	462.6750	Orange Dot	12.5 †
13	464.3250		12.5 †
14	464.8250		12.5 †
15	469.5000		12.5 †
16	469.5500		12.5 †
17	463.2625		12.5 †
18	464.9125		12.5 †
19	464.6000		12.5 †
20	464.7000		12.5 †
21	462.7250		12.5 †
22	464.5000	Brown Dot	12.5
23	464.5500	Yellow Dot	12.5
24	467.7625	J	12.5
25	467.8125	K	12.5
26	467.8500	Silver Star	12.5
27	467.8750	Gold Star	12.5
28	467.9000	Red Star	12.5
29	467.9250	Blue Star	12.5
30	461.0375		12.5
31	461.0625		12.5
32	461.0875		12.5
33	461.1125		12.5
34	461.1375		12.5
35	461.1625		12.5
36	461.1875		12.5
37	461.2125		12.5
38	461.2375		12.5
39	461.2625		12.5
40	461.2875		12.5
41	461.3125		12.5
42	461.3375		12.5
43	461.3625		12.5
44	462.7625		12.5
45	462.7875		12.5
46	462.8125		12.5
47	462.8375		12.5
48	462.8625		12.5
49	462.8875		12.5
50	462.9125		12.5
51	464.4875		12.5
52	464.5125		12.5

UHF Business Band			
Code No.	MHz	Color Dot	Band Width
53	464.5375		12.5
54	464.5625		12.5
55	466.0375		12.5
56	466.0625		12.5
57	466.0875		12.5
58	466.1125		12.5
59	466.1375		12.5
60	466.1625		12.5
61	466.1875		12.5
62	466.2125		12.5
63	466.2375		12.5
64	466.2625		12.5
65	466.2875		12.5
66	466.3125		12.5
67	466.3375		12.5
68	466.3625		12.5
69	467.7875		12.5
70	467.8375		12.5
71	467.8625		12.5
72	467.8875		12.5
73	467.9125		12.5
74	469.4875		12.5
75	469.5125		12.5
76	469.5375		12.5
77	469.5625		12.5
78	462.1875		12.5
79	462.4625		12.5
80	462.4875		12.5
81	462.5125		12.5
82	467.1875		12.5
83	467.4625		12.5
84	467.4875		12.5
85	467.5125		12.5
86	451.1875		12.5
87	451.2375		12.5
88	451.2875		12.5
89	451.3375		12.5
90	451.4375		12.5
91	451.5375		12.5
92	451.6375		12.5
93	452.3125		12.5
94	452.5375		12.5
95	452.4125		12.5
96	452.5125		12.5

UHF Business Band			
Code No.	MHz	Color Dot	Band Width
97	452.7625		12.5
98	452.8625		12.5
99	456.1875		12.5
100	456.2375		12.5
101	456.2875		12.5
102	468.2125		12.5
103	468.2625		12.5
104	468.3125		12.5
105	468.3625		12.5
106	468.4125		12.5
107	468.4625		12.5
108	468.5125		12.5
109	468.5625		12.5
110	468.6125		12.5
111	468.6625		12.5
112	456.3375		12.5
113	456.4375		12.5
114	456.5375		12.5
115	456.6375		12.5
116	457.3125		12.5
117	457.4125		12.5
118	457.5125		12.5
119	457.7625		12.5
120	457.8625		12.5
121	461.3175		12.5
122	464.8375		12.5
00	DELETE Code*		

* 2-digit Frequency placeholder code (Refer to "How to Delete a Channel" on page 16)

† Frequency code was 25 KHz bandwidth prior to the 2013 FCC Narrowband Mandate.

- 12.5 kHz indicates a narrow band channel, 25 kHz indicates a wide band channel.
- If a channel has been PC programmed to a non-table frequencies it cannot be changed via field programming

RADIO PROGRAMMING

TABLE 2: INTERFERENCE ELIMINATOR PROGRAMMABLE QC TONE

Code	Hz	Code	Hz	Code	Hz
01	67.0	18	123.0	35	225.7
02	71.9	19	127.3	36	233.6
03	74.4	20	131.8	37	241.8
04	77.0	21	136.5	38	250.3
05	79.7	22	141.3	39	69.4
06	82.5	23	146.2	40	159.8
07	85.4	24	151.4	41	165.5
08	88.5	25	156.7	42	171.3
09	91.5	26	162.2	43	177.3
10	94.8	27	167.9	44	No Tone
11	97.4	28	173.8	45	183.5
12	100.0	29	179.9	46	189.9
13	103.5	30	186.2	47	196.6
14	107.2	31	192.8	48	199.5
15	110.9	32	203.5	49	206.5
16	114.8	33	210.7	50	229.1
17	118.8	34	218.1	51	254.1
				00	Delete

TABLE 3: DIGITAL INTERFERENCE ELIMINATOR PROGRAMMABLE DQC TONE

CODE NUMBERS							
023	072	152	244	311	412	466	632
025	073	155	245	315	413	503	645
026	074	156	246	325	423	506	654
031	114	162	251	331	431	516	662
032	115	165	252	332	432	523	664
036	116	172	255	343	445	532	703
043	122	174	261	346	446	546	712
047	125	205	263	351	452	565	723
051	131	212	265	356	454	606	731
053	132	223	266	364	455	612	732
054	134	225	271	365	462	624	734
065	143	226	274	371	464	627	743
071	145	243	306	411	465	631	754

HOW TO FIELD PROGRAM RADIO FEATURE CODES

1. Follow the instructions in FIG-7 on page 12 to place the base station in the Program / Readout Mode.
2. Using the PTT (push-to-talk) button and the LED display, enter the single digit code from Table 4 below for the option to be programmed.
3. Pause—the display will change and show a hyphen, you will also hear a short low tone.
4. Press and release the On / Volume Up to **SAVE** your programming entry. The base station will sound a triple beep to indicate that programming was successful.
5. Turn the base station OFF and then ON again—the base station is now ready to use.

TABLE 4: Radio Feature Codes

Option		Code
Turn Channel Scan	ON	1
Turn Channel Scan	OFF	2
Turn Weather Channel	ON	3
Turn Weather Channel	OFF	4
Turn Weather Alert	ON	5
Turn Weather Alert	OFF	6
Assign SCAN option to Z Button		7
Assign WEATHER option to Z Button		8
Assign MONITOR option to Z Button		9
Assign CALL TONE option to Z Button		0

NOTES:

1. If Code 7 is selected Codes 1 & 2 will have no effect
2. If Code 8 is selected, Codes 3 & 4 will have no effect
3. Code 0 is entered by pressing the PTT 10 times

RADIO PROGRAMMING

HOW TO DELETE A CHANNEL

Following the instructions in “How to Field Program Frequency & Tone Codes” on page 13, enter a Frequency Code of “00” and a Tone Code of “00”. Once a channel has been deleted it is no longer available with the Channel Selector.

A deleted channel can be added back at any time. To add a deleted channel back, follow the instructions in “How to Field Program Frequency & Tone Codes” on page 13.

PC PROGRAMMABLE FEATURES

The “Display Series” base station has many features that are only available through PC programming. See your Ritron dealer or contact Ritron directly for PC programming of these options.

Receive and Transmit Frequency on any channel can be programmed to any valid frequency within its designated band. (See “Display Series Model Numbers” for frequency bands)

Squelch Tightener on any channel can adjust carrier squelch UP to block distant signals or DOWN to hear more distant signals.

Wide or Narrow Band transmit operation can be set per channel. Refer to the section FCC Narrowband Mandate to see if your radio is capable of wideband transmit operation.

Monitor Lock Out can be set on any channel to prevent monitoring of the channel, only broadcasts with the correct QC or DQC code can be heard.

Transmit Inhibit on Busy Channel can be set on any channel to prevent transmitting when a broadcast is present on the receiver that does not carry the correct code. This feature is usually used in conjunction with Monitor Lock Out.

Transmit Time Out time can be changed.

Power Saver “sleep” time can be set, or power saver can be disabled.

Courtesy Beep sounds a short tone at the end of each received transmission to indicate that the channel is clear and you may transmit.

Transmit Clear To Talk Beep Any channel can be set to sound a short tone after the PTT has been pressed to indicate that the base station is ready for you to begin talking.

Disable Field Programming to allow only PC programming.

Channel Scan can be programmed or edited to include any of the radio channels, even channels that are not selected with the Channel Selector button. Other programmable scan features include scan resume delay time, busy channel blocking, last active channel beeps, and priority scanning options.

2-Tone Paging Decode can be set on any channel. Programmable options include the setting of the 2-Tone frequencies and duration, All Call, Group Call, Call Transpond, automatic setting of 2-Tone Decode when the channel is selected, automatic reset of the 2-Tone Decode if a call is not answered within 15 seconds, and automatically set the base station to carrier squelch mode after a 2-Tone signal is received.

* **2-Tone Encode** Each channel can be programmed with a unique pair of 2-Tone encode frequencies between 300-1500 Hz. Pressing the “Z” button will send the 2-Tone Code.

* **DTMF ANI** A unique **DTMF ANI** string can be programmed separately for each channel. Pressing the “Z” button will send the DTMF ANI.

* **Note:** A channel can not be programmed to do both DTMF ANI and 2-Tone Encode.

!! CAUTIONS – ALL RADIOS !!

OBSERVE CAUTION IN THE FOLLOWING ENVIRONMENTS TO MAXIMIZE THE LIFE OF YOUR RADIO EQUIPMENT:

LOCATION: Be aware that this radio and / or antenna may create interference with, or be interfered with, by nearby electronic equipment such as computers, monitors, keyboards, electronic telephones and other sensitive devices. Either move the equipment or use a remote antenna to separate components sufficiently to stop or reduce interference.

MOISTURE: “Display Series” base radios are not waterproof. **DO NOT** directly expose them to rain or excessive moisture.

CHEMICALS: Detergents, alcohol, aerosol sprays or petroleum products can damage the radio case. **DO NOT** use petroleum solvents of any kind; use a soft cloth moistened with water to clean the case.

EXTREME HEAT: High temperatures can damage the radio and its components. **DO NOT** expose the units to extreme heat or leave them in direct sunlight.

EXCESSIVE TRANSMISSIONS: **DO NOT** hold the Push-To-Talk switch down longer than necessary during transmission intervals.

VIBRATION / SHOCK: Although your “Display Series” base radio is designed to be rugged, it will not survive excessive abuse. Avoid dropping the radio.

EXPOSURE TO RADIO FREQUENCY ENERGY:

These products generate radio frequency (RF) energy when the PTT button on the front of the unit is depressed. The product has been evaluated for compliance with the maximum permissible exposure limits for RF energy at the maximum power rating of the unit when using antennas available from RITRON. Antennas other than those mentioned below have not been tested for compliance and may or may not meet the exposure limits at the distances given. Higher gain antennas are capable of generating higher fields in the strongest part of their field and would, therefore, require a greater separation from the antenna.

JBS-446D: Using the AFB-1545 antenna included with the product at the 20 cm (7.9 inches) minimum expected separation distance and greater, the maximum RF exposure is well below the General Population/Uncontrolled limits. Antennas other than those available from RITRON have not been tested for compliance and may or may not meet the exposure limits at the distances given. Higher gain antennas are capable of generating higher fields in the strongest part of their field and would, therefore, require a greater separation from the antenna. This product is not to be used by the general public in an uncontrolled environment unless compliance with the Uncontrolled/General Population limits for RF exposure can be assured.

To limit exposure to RF energy to levels below the limit, please observe the following:

- Use only the antenna(s) available from RITRON for these models. **DO NOT** operate the radio without an antenna.
- Keep talk times as short and infrequent as possible. **DO NOT** depress the PTT button when not actually wishing to transmit. These radios are equipped with an internal timer to limit continuous transmit times.
- When transmitting, make certain that the distance limits for the particular model in use are observed.
- **DO NOT** allow children to operate the radio.

TROUBLESHOOTING

NOTES

1. • Reception can often be improved if you relocate by a short distance. This effect is more noticeable inside buildings.
 - The range of the “Display Series” base radio is approximately two miles, line-of-sight.
2. • If your radio does not detect calls from other radios on the channel, turn off Quiet Call by pressing and holding both volume buttons at the same time—a double beep indicates Quiet Call is off.
3. • Without use of a repeater: To hear a call, select a channel programmed to receive the caller’s transmit frequency. To call another unit, select a channel programmed to transmit the other radio’s receive frequency.
 - Using a repeater: A radio channel can hold two separate operating frequencies, one for receive and one for transmit. Your channel must work with the repeater’s transmit and receive frequencies.
- NOTE: A dealer must program the radio for repeater operation.
4. • An optional RM-7 Remote Speaker / Microphone and headset, plus the CCL-M 12 VDC Adapter, allow operation in a vehicle. See page ii for accessories.
5. • To “talk” with each other, radios must be programmed identically for Quiet Call code, as well as frequency. Each code is unique; radios respond only to the code programmed.
 - Press and hold both volume buttons at the same time.
 - A single beep indicates Quiet Call squelch is on.
 - A double beep indicates Quiet Call squelch is off.

CHART

If you have trouble operating the base radio, review the Control & Operation, pages 3 through 9. If you think the base radio is malfunctioning, check the list below.

Problem	Possible Solutions
GENERAL	
The radio does not work at all. Operating features do not work exactly as expected. Reception is poor.	<ul style="list-style-type: none"> • Make sure the 120 VAC outlet is active and the RPS-1B power supply is connected. • The radio has been dealer programmed for customized operation. (Consult dealer.) • Move to a different location. (See Note 1.) • Confirm the proper antenna is connected to the radio. • Use an optional high-gain antenna. See page ii, Optional Accessories.
You cannot hear calls from other radios.	<ul style="list-style-type: none"> • Turn off Quiet Call (coded) squelch. (See Note 2.) • Ensure radio receives the same frequency the caller transmits. (See Note 3.)
Your calls cannot be heard in other radios.	<ul style="list-style-type: none"> • Make sure that your radio transmits on the receive frequency of the radio(s) you want to call. (See Note 3.)
ERROR TONES	
An error tone sounds when the radio is first switched on. An error tone occurs while transmitting.	<ul style="list-style-type: none"> • See “Error Tones” on page 6. • Refer to “Transmitter Time-Out,” page 6.
QUIET CALL	
You cannot screen out calls from users outside of your Quiet Call group. You cannot hear Quiet Call messages while in Quiet Call (coded) squelch.	<ul style="list-style-type: none"> • Make sure that the channel is programmed with Quiet Call. • Activate coded squelch. (See Note 5.) • Confirm that the channel is programmed to detect the same code as the calling radio(s) transmits. (See Note 5.)
Others in your Quiet Call group cannot hear your Quiet Call messages.	<ul style="list-style-type: none"> • Verify that you transmit the same code as the radio(s) you call are programmed to detect. (See Note 5.)
SCAN	
The radio constantly stops on a busy channel, preventing you from hearing calls on.	<ul style="list-style-type: none"> • Skip over the interfering channel when scanning. See “Temporary Busy Channel Blocking” on page 7.

SPECIAL APPLICATION

HOW TO FIELD PROGRAM 2-TONE ENCODE CODES

For special applications, it is possible to use your Ritron portable radio or base station for remote control applications; such as opening or closing a gate remotely (see **Ritron GateGuard** at www.ritron.com/pdf/gg_07.pdf). This application requires you to program the radio(s) that will be sending the command for 2-Tone code operation, and radio(s) that will be receiving the command (e.g. Ritron Callbox) for 2-Tone Encode operation. The 2-Tone Codes must match.

The user can field program each channel with one of the **9 pre-set 2-Tone Codes** specified in **Table 5**. These codes correspond to field programmable 2-Tone Codes available in the Ritron 6-Series or 7-Series OUTPOST Callbox. In our example we will program a UHF radio to operate with 2-Tone **Code #94**.

Important Note:

You can **ADD** a 2-Tone Code to a channel if the Frequency Code and Tone Code are not changed. Changing the **Frequency Code** or **Tone Code** of a channel will **ERASE** any 2-Tone Code programmed on that channel. You must **FIRST** re-program the channel to the desired **Frequency Code** and **Tone Code** and then **SAVE** the entry by pressing the On / Volume Up button, then you may enter your 2-Tone Code, remember you must also **SAVE** this entry by pressing the On / Volume Up button.

1. Refer to **Table 5** to determine the 2 digit, 2-Tone Code(s) you wish to program into each specific channel.
2. Follow the instructions in Fig 7, page 12 to place the radio in the "Program / Readout Mode".
3. Using the channel button and the LED display on the radio, select the channel number you want to program a 2-Tone Code into.

98

4. Enter the 1st digit of the 2-Tone code by clicking the PTT button until the program display shows the desired number. Pause—the radio will sound a low tone and show a hyphen across the display to indicate that it is ready to accept the next digit.

94

5. Enter the 2nd digit of the 2-Tone code by clicking the PTT button until the program display shows the desired number. Pause—the radio sounds a low tone and will show a hyphen across the display.

6. After you have entered the two digits, press and release the On / Volume Up button to **SAVE** the entry. The LED display will briefly show the channel number you have just programmed and then a hyphen, the radio will sound a triple beep to indicate that programming was successful.

An **ERROR** tone will sound if you attempt to save an incorrect code, an "E" will appear on the LED display. Check the digits you are attempting to program and start over.

7. You may program each channel with the same or a different 2-Tone Code by repeating steps 3-6.
8. Turn the radio OFF and then ON again for normal operation. The "Z" button is used to send the 2-Tone Code. See **HOW TO SEND A 2-TONE CODE** below.



If more than 5 digits are displayed during readout, the radio has been programmed for 2-Tone Encode. The frequency and tone codes will be displayed, followed by a "C", then the radio will display the 2-Tone Code; see **Table 5**. In this example a UHF radio was programmed to operate on the "Brown Dot" **Frequency Code 04** (464.500 MHz) with **Tone Code 12** (100.0 Hz) and **2-Tone Encode Code 94**.

Readout Sequence

04-12-0-9-4-C

Frequency Code Tone Code 2-Tone Code

HOW TO SEND A 2-TONE CODE

1. Select a channel that has been programmed with a 2-Tone Code.
2. Press the "Z" button to send the 2-Tone Code programmed for that specific channel.

TABLE 5: PROGRAMMABLE 2-TONE ENCODE CODES

Code No.	Code No.	Code No.
91	94	97
92	95	98
93	96	99

FCC & IC LICENSE REQUIRED

LICENSING

The FCC requires the owners of the radios to obtain a station license before using them.

The station licensee is responsible for ensuring that transmitter power, frequency and deviation are within the limits specified by the station license. The station licensee is also responsible for proper operation and maintenance of the radio equipment. This includes checking the transmitter frequency and deviation periodically, using appropriate methods.

To get a FCC license for VHF or UHF frequencies, submit FCC application Form 600 as indicated in the block at right. Your Ritron dealer can help you with this process.

SAFETY STANDARDS

The FCC (with its action in General Docket 79-144, March 13, 1985) has adopted a safety standard for human exposure to radio frequency electromagnetic energy emitted by FCC regulated equipment. Ritron observes these guidelines and recommends that you do also:

- **DO NOT** hold the radio so that the antenna is very close to or touching exposed parts of the body, especially the face or eyes, while transmitting. Keep the radio vertical, four inches away while talking into the front panel.
- **DO NOT** press the Push-To-Talk except when you intend to transmit.
- **DO NOT** operate radio equipment near electrical blasting caps or in an explosive atmosphere.
- **DO NOT** allow children to play with any radio equipment that contains a transmitting device.
- Repair of Ritron products should be performed only by Ritron authorized personnel.

HOW TO OBTAIN AN FCC RADIO LICENSE

Federal Communications Commission (FCC) Licensing Information

Because your Ritron radio operates on Private Land Mobile frequencies, it is subject to the Rules and Regulations of the FCC, which requires all operators of these frequencies to obtain a station license before operating their equipment. Make application for your FCC license on FCC Forms 600 and 159.

To have forms and instructions faxed to you by the FCC, call the FCC **Fax-On-Demand** system at **202-418-0177** from your fax machine; request Document 000600 & Form 159.

To have Document 000600 & Form 159 mailed to you, call the **FCC Forms Hotline** at **800-418-FORM** (800-418-3676).

For **help with questions** concerning the license application, contact the **FCC** at **888-CALL-FCC** (888-225-5322).

You must decide which radio frequency(ies) you can operate on before filling out your application.

For **help determining your frequencies**, call Ritron at **800-USA-I-USA** (800-872-1872).

INDUSTRY CANADA REGULATIONS

Industry Canada requires the owners of the radios to obtain a radio license before using them. Application forms can be obtained from the nearest Industry Canada District office.

Industry Canada License Application

1. Fill in the items per the instructions. If you need additional space for any item, use the reverse side of the application.
2. Use a typewriter or print legibly.
3. Make a copy for your files.
4. Prepare a check or money order to "Receiver General for Canada", for the amount listed at <http://www.ic.gc.ca/eic/site/smt-gst.nsf/eng/sf01027.html>. (Licenses are renewed annually on April 1st. Refer to the calculation for application fees for each month.)
5. Mail the completed application, along with your check or money order, to the closest Industry Canada District Office.

SERVICE

Federal law prohibits you from making any internal adjustments to the transmitter, and / or from changing transmit frequencies unless you are specifically designated by the licensee.

If your radio equipment fails to operate properly, or you wish to have the radio programmed, contact your local authorized dealer or Ritron.

U.S. Manufacturer:

RITRON, INC. - Repair Department
505 West Carmel Drive,
Carmel, Indiana 46032 USA

Phone: 317-846-1201 FAX: 317-846-4978

Email: customer_service@ritron.com

RITRON, INC. LIMITED WARRANTY

WHAT THIS WARRANTY COVERS

RITRON, INC. ("RITRON") provides the following warranty against defects in materials and/or workmanship in **RITRON Radios and Accessories** under normal use and service during the applicable warranty period (as stated below). "Accessories" means antennas, holsters, chargers, earphones, speaker / microphones and items contained in the programming and programming/service kits.

<u>WHAT IS COVERED</u>	<u>FOR HOW LONG</u>	<u>WHAT RITRON WILL DO</u>
"Display Series" Base Station Radios	1 year *	During the first year after date of purchase. RITRON will repair or replace the defective product at RITRON's option. parts and labor included at no charge.
Accessories	90 days *	*After date of purchase

WHAT THIS WARRANTY DOES NOT COVER:

- Any technical information provided with the covered product or any other RITRON products:
- Installation, maintenance or service of the product. unless this is covered by a separate written agreement with RITRON:
- Any products not furnished by RITRON which are attached or used with the covered product. or defects or damage from the use of the covered product with equipment that is not covered (such as defects or damage from the charging or use of batteries other than with covered product):
- Defects or damage. including broken antennas, resulting from:
 - misuse, abuse, improper maintenance, alteration, modification, neglect, accident, or act of God.
 - the use of covered products other than in normal and customary manner or.
 - improper testing or installation:
- Defects or damages from unauthorized disassembly, repair or modification. or where unauthorized disassembly. repair or modification prevents inspection and testing necessary to validate warranty claims:
- Defects or damages in which the serial number has been removed, altered or defaced.
- Batteries if any of the seals are not intact.

WHO IS COVERED BY THIS WARRANTY

This warranty is given only to the purchaser or lessee of covered products when acquired for use, not resale. This warranty is not assignable or transferable.

Pub 14500087 REV. A 10-14

© 1999-2014 RITRON, INC. • ALL RIGHTS RESERVED
RITRON, JOBCOM, QUICK ASSIST, OUTPOST, GATEGUARD,
RADIONEXUS and QUIET CALLARE REGISTERED TRADEMARKS OF RITRON, INC.
QUICK TALK AND LIBERTY ARE TRADEMARKS OF RITRON. INC.



IMPORTANT

This warranty sets forth the full extent of RITRON's express responsibilities regarding the covered products. and is given in lieu of all other express warranties. What RITRON has agreed to do at left is your sole and exclusive remedy. No person is authorized to make any other warranty to you on behalf of RITRON. Warranties implied by state law, such as implied warranties of merchantability and fitness for a particular purpose are limited to the duration of this limited warranty as it applies to the covered product. Incidental and consequential damages are not recoverable under this warranty (this includes loss of use or time, inconvenience, business interruption, commercial loss, lost profits or savings). **Some states do not allow the exclusion or limitation of incidental or consequential damages, or limitation on how long an implied warranty lasts, so the above limitations or exclusions may not apply to you. Because each covered product system is unique, RITRON disclaims liability for range, coverage, or operation of the system as a whole under this warranty.**

HOW TO GET WARRANTY SERVICE

To receive warranty service, you MUST deliver or send the defective product, delivery costs and insurance prepaid, within the applicable warranty period, to RITRON, INC., 505 West Carmel Drive, Carmel, Indiana 46032. Attention: Warranty Department.

Please point out the nature of the defect in as much detail as you can. **You MUST retain your sales or lease receipt (or other written evidence of the date of purchase) and deliver it along with the product.** If RITRON chooses to repair or replace a defective product, RITRON may replace the product or any part or component with reconditioned product, parts or components. Replacements are covered for the balance of the original applicable warranty period. All replaced covered products, parts or components become RITRON's property.

RIGHTS TO SOFTWARE RETAINED

Title and all rights or licenses to patents, copyrights, trademarks and trade secrets in any RITRON software contained in covered products are and shall remain in RITRON. RITRON nevertheless grants you a limited non-exclusive, transferable right to use the RITRON software only in conjunction with covered products. No other license or right to the RITRON software is granted or permitted.

YOUR RIGHTS UNDER STATE LAW

This warranty gives you specific legal rights, and you may also have other rights which vary from state to state.

WHERE THIS WARRANTY IS VALID

This warranty is valid only within the United States, the District of Columbia and Puerto Rico.

505 West Carmel Drive • Carmel, IN 46032
P.O. Box 1998 • Carmel, IN 46082-1998
Ph: 317-846-1201 • Fax: 317-846-4978 • Email: ritron@ritron.com
Website: www.ritron.com

ADDENDUM TO MANUAL

JBS-146i-A and JBS-446D-A Instructions Auto Turn On When Power Restored

Ritron models JBS-146i-A and JBS-446D-A have been built to operate any time power is applied to the base radio, eliminating the need to press the On/Volume Up button to turn the radio on.

The JBS-146i-A and JBS-446D-A model base radios

- Will turn on any time power is applied to the radio, allowing it to automatically turn back on after a power failure.
- Will store the current channel in EEPROM each time the channel is changed, assuring that the radio will automatically restart to the current operating channel after a power outage. As an alternative, the radio can be PC programmed to turn on to channel 1 whenever power is applied.
- Will not turn-off by pressing the Volume Down/Off button. The only way to turn the radio off is to remove power.
- Will restart to a mid volume level after a power outage. As an alternative, this option can be disabled using the PC Programmer and the radio will turn on at minimum volume.
- Will not turn-off as a result of a low battery condition, therefore, the JBS-146i-A is not recommended for battery powered applications.
- Does not have Power Save capability for battery conservation.
- Requires Ritron PC Programmer 9.6.0 or higher.

To place the JBS-146i-A or JBS-446D-A into field programming mode

1. Remove power from the JBS-146i-A or JBS-446D-A base radio.
2. Hold down the PTT button and re-apply power.
3. Continue to hold the PTT until the beeping has stopped, then release.
4. The radio will display a series of six characters for Radio Identification, then a triple beep will be heard indicating that the JBS-146i-A or JBS-446D-A base radio is in program mode.
5. When programming is complete, remove power and re-apply to return the radio to normal operating mode.