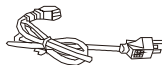


## Packing List

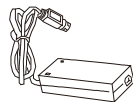
### Standard Accessories



Printer



Power cord



Adapter



USB cable



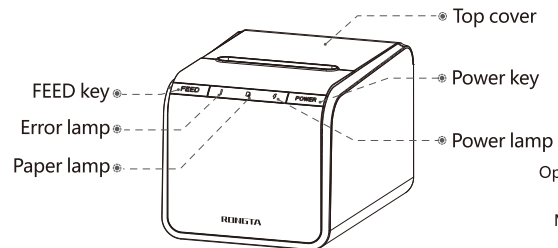
Fast Installation Guide



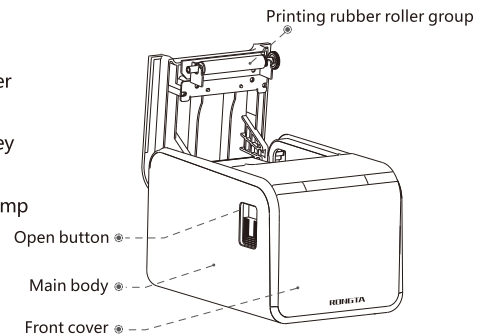
CD

## Appearance & Parts

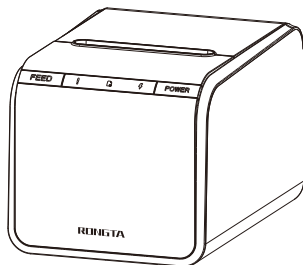
### Front View



### Internal View



**Fast Installation Guide**  
**ACE G1Y**



Professional Receipt  
Printer Manufacturer

## Cable Connection

### ■ Connect Power Cord

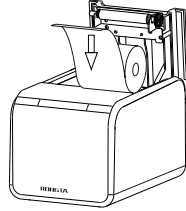
- 1.Open back cover of printer;
- 2.Connect adapter to printer;
- 3.Connect power cord to adapter;
- 4.Connect another end of power cord to socket nearby.

### ■ Connect Cable

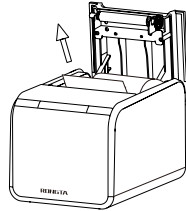
- 1.Connect cable to printer ;
- 2.Connect cable to PC ;
- 3.Long press power key to power on.

## Paper Loading

1. Confirm the print face up and place the paper roll in the printer ;



2. pull the paper roll out over the roller;



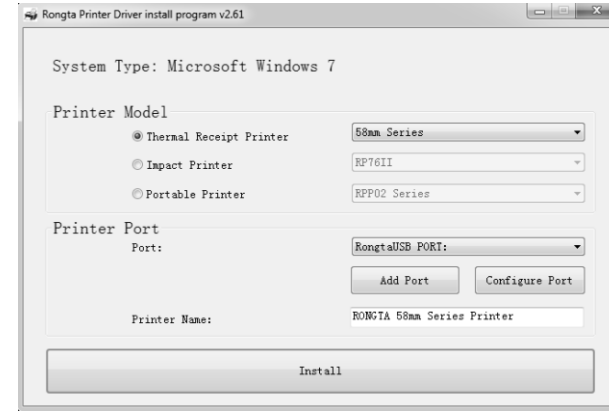
3. Close front cover of printer,press forward until hearing "ka" of front cover,which means closed.





## Driver Installation/ Trouble Removal

### ■ Driver Installation

Load the CD and run the "Rong Ta Driver Install" to install the printer driver.



### ■ Trouble Removal

!			Alarm sound	Trouble description	Trouble removal
on	on	on	three sound	paper out	load the paper roll
on	off	on	five sound	printer head over heat	wait till the printer is cool and then continue to work
on	on	on	six sound	cover closing abnormal	check and close the upper cover properly

Attention: If any trouble can't be solved, please contact local distributors and after-sales to handle it.

**FCC WARNING:**

Any Changes expressly or modifications not approved by the party responsible for compliance could void the user's authority to operate the equipment.

This device complies with part 15 of the FCC Rules. Operation is subject to the following two conditions:

(1) This device may not cause harmful interference, and (2) this device must accept any interference received, including interference that may cause undesired operation.

Note: This equipment has been tested and found to comply with the limits for a Class B digital device,

pursuant to part 15 of the FCC Rules. These limits are designed to provide reasonable protection against harmful interference in a residential installation. This equipment generates, uses and can radiate radio frequency energy and, if not installed and used in accordance with the instructions, may cause harmful interference to radio communications. However, there is no guarantee that interference will not occur in a particular installation. If this equipment does cause harmful interference to radio or television reception, which can be determined by turning the equipment off and on, the user is encouraged to try to correct the interference by one or more of the following measures:

- Reorient or relocate the receiving antenna.
- Increase the separation between the equipment and receiver.
- Connect the equipment into an outlet on a circuit different from that to which the receiver is connected.
- Consult the dealer or an experienced radio/TV technician for help.

**FCC Radiation Exposure Statement:**

This equipment complies with FCC radiation exposure limits set forth for an uncontrolled environment .

This transmitter must not be co-located or operating in conjunction with any other antenna or transmitter.

This equipment should be installed and operated with minimum distance 20cm between the radiator & you body.