

SAK-25

Instruction Manual

Compatibility: The SAK-25 Wire to RF Transmitter, with Magnetic Contact Sensor, is compatible with a variety of Rosslare's receivers and panels, in 433.92 or 868.35 MHz.

GENERAL DESCRIPTION

The SAK-25 Universal WIRE to RF Transmitter is a unique RF transmitter, with advanced features that operates at 433.92 or 868.35 MHz designed for wireless security and control applications.

Totally Universal: Convert Wired Sensors to Wireless, and interface them to the RF Panel or Multi-Channel Receiver. Compatible with wired PIR / Door / Window / Smoke / Rolling Shutter / Vibration sensors / Glass Break Detectors and more.

Main features are: Two programmable wired inputs and One local Magnetic Contact Sensor, which may share a Supervised RF Sensor ID Code, or have three separate Supervised ID Codes (Supervisor will transmit every 20 minutes, or 1 hour, depending on model ordered). The SAK-25 operates on a 3.6V / 900mAh lithium battery with low current draw, one battery lasts for min 2 Years (With 200 Transmissions per day). In case of low Batt, SAK-25 will transmit a Low Battery Signal to the control Unit. For Backup Power, an auxiliary power input can be connected at +12V DC and GND from the host panel of the wired sensor, or an AC/DC Adaptor.

ADVANCED FEATURES

- * Programmable Locally or by PC Software Utility (RS232)
- * Ultra Low Power Microprocessor Design with Real-Time Software
- * Tamper-Proof Internal Antenna
- * Supervised (Every 20 minutes), with Low Battery detection and reporting to Rosslare's RF Control Units
- * Cover and Wall (Selectable) - Double Tamper Detection
- * Pulse counting Wired Input for Rolling Shutter, Shock Detection facility programmable to 3,6, or 9 pulses
- * 3 Channels (2 Wired, 1 Local Mag Contact) programmable as three independent zone ID's or as a single zone ID's.
- * Programmable Enable Disable of Local Magnetic Contact Sensor.

PROGRAMMING

Programming of the SAK-25 can be performed locally using the LED and the buttons S1 and S2, as well as, from a connected PC. You may connect to the SAK-25 from the PC using the MD-14 RS232 to RS485 converter and Rosslare's SAK-25 Utility Software for the PC. (Available from Rosslare Website),

SOLID RED LED MENU for programming the operation of Inputs 1 and 2

Local Programming the operation of the SAK-25 is available locally using the push buttons S1 and S2 and the Tri Color LED.

- 1) Press both buttons at the same time and release when the LED is solid red to enter the menu ● Solid Red LED MENU
- 2) Press S1 to scroll Input 1 programming modes-Release at desired Mode.
- 3) Press S2 to scroll Input 2 programming modes-Release at desired Mode.
- 4) Press both S1 and S2 together to exit the menu.

Input 1

(Wired Input) Programmable Locally and by PC Link Software, as any of the options below.

- Mode 1: PIR (Normally Open)
 Mode 2: PIR (Normally Closed)
 Mode 3: Door/Window (Normally Open)
 Mode 4: Door/ Window (Normally Closed)
 Mode 5: Smoke (Normally Open)
 Mode 6: Smoke (Normally Closed)

Local Programming Menu - S1

- Solid Red LED
- Flashing Red LED
- Solid Orange LED
- Flashing Orange LED
- Solid Green LED
- Flashing Green LED

Input 2

(Wired Input) Programmable Locally and by PC Link Software, as any of the options below.

- Mode 1: PIR (Normally Open)
 Mode 2: PIR (Normally Closed)
 Mode 3: Door/Window (Normally Open)
 Mode 4: Rolling Shutter 3 Pulse Count
 Mode 5: Rolling Shutter 6 Pulse Count
 Mode 6: Rolling Shutter 9 Pulse Count

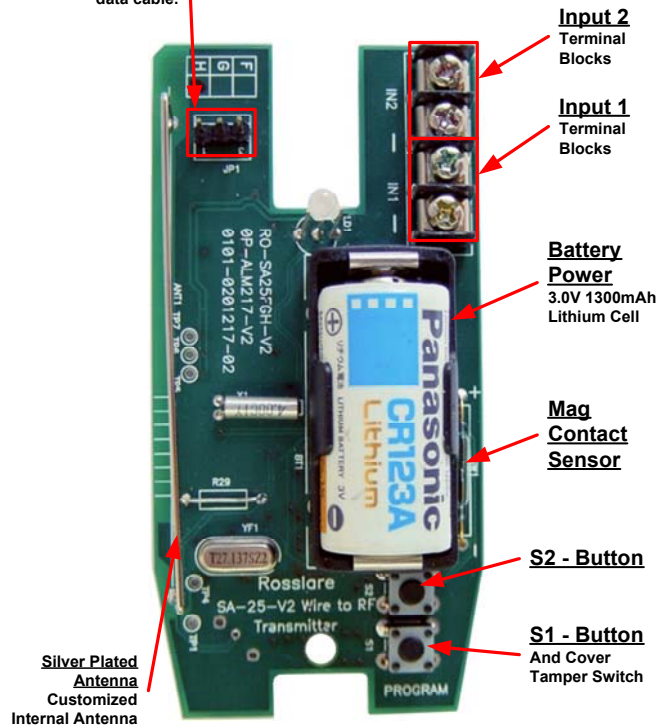
Local Programming Menu - S2

- Solid Red LED
- Flashing Red LED
- Solid Orange LED
- Flashing Orange LED
- Solid Green LED
- Flashing Green LED



Model : SAK-25

PC-Link Connector
RS-232 I/O connects to PC via supplied data cable.



Inside Model : SAK-25

SAK-25

Instruction Manual

Compatibility: The SAK-25 Wire to RF Transmitter, with Magnetic Contact Sensor, is compatible with a variety of Rosslare's receivers and panels, in 433.92 or 868.35 MHz

LOCAL PROGRAMMING (cont.)

SOLID ORANGE MENU for Programming Channels Common ID and Independent ID Codes.

Local Programming the operation of the SAK-25 is available locally using the push buttons S1 and S2 and the Tri Color LED.

- 1) Press both buttons at the same time and release when the LED is solid orange to enter the menu
- 2) You will see the current mode of the ID Code settings upon release of both of the buttons.

Mode 1: All channels report independent ID
Mode 2: All channels report same ID

- 3) Press S2 to toggle the current setting.

Same ID Code for all 3 Inputs

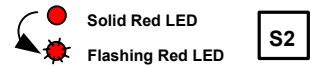
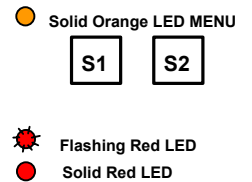
If the mode was independent ID's (Flashing Red), pressing S2 will toggle the mode to same ID Codes for three Channels.

Press both S1 and S2 together to exit the menu.

Different ID Codes for all 3 Inputs

If the mode was Same ID's (Solid Red), pressing S2 will toggle the mode to independent ID Codes for three Channels.

Press both S1 and S2 together to exit the menu.



FLASHING ORANGE MENU for Programming Channel 3 Local Magnetic Sensor Restore Event Operation

Local Programming the operation of the SAK-25 is available locally using the push buttons S1 and S2 and the Tri Color LED.

- 1) Press both buttons at the same time and release when the LED is solid orange to enter the menu.
- 2) You will see the current mode of the ID Code settings upon release of both of the buttons.

Mode 1: Built-in Magnetic Sensor will not automatically send restore, only when the magnet will be effectively restored.

Important Note: This local menu will only allow programming if Input 1 is programmed as Magnetic Door/ sensor & Normally Open

Mode 2: Built-in magnetic sensor will automatically send the restore signal after two seconds, even if the magnet has not been effectively restored.

Important Note: This local menu will only allow programming if Input 2 is programmed as 3,6 or 9 pulses rolling shutter or vibration pulse counting.

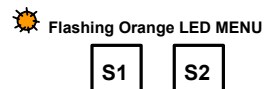
- 3) Press S2 to toggle the current setting

Toggling Mode 1 to Mode 2

If the mode was Mode 1 (Flashing Red) pressing S2 will toggle the mode to Mode 2.

Toggling Mode 2 to Mode 1

If the mode was Mode 2 (Solid Red) pressing S2 will toggle the mode to Mode 1.



SAK-25 Instruction Manual

Compatibility: The SAK-25 Wire to RF Transmitter, with Magnetic Contact Sensor, is compatible with a variety of Rosslare's receivers and panels, in 433.92 or 868.35 MHz

SOLID Green MENU for Enabling or Disabling the Internal Built in Magnetic Contact Sensor



Local Programming the operation of the SAK-25 is available locally using the push buttons S1 and S2 and the Tri Color LED.

- 1) Press both buttons at the same time and release when the LED is solid orange to enter the menu
- 2) You will see the current mode of the ID Code settings upon release of both of the buttons.

 Solid Orange LED MENU



- Mode 1: Built-in Magnetic Sensor Enabled
- Mode 2: Built-in Magnetic Sensor Disabled

 Flashing Red LED
 Solid Red LED

- 3) Press S2 to toggle the current setting

Toggle from Mode 1 to Mode 2

If the mode was Mode 1 (Flashing Red) pressing S2 will toggle the mode to Mode 2.

Press both S1 and S2 together to exit the menu.

 Flashing Red LED
 Solid Red LED

S2

Toggle from Mode 2 to Mode 1

If the mode was Mode 1 (Flashing Red) pressing S2 will toggle the mode to Mode 2.

Press both S1 and S2 together to exit the menu.

 Solid Red LED
 Flashing Red LED

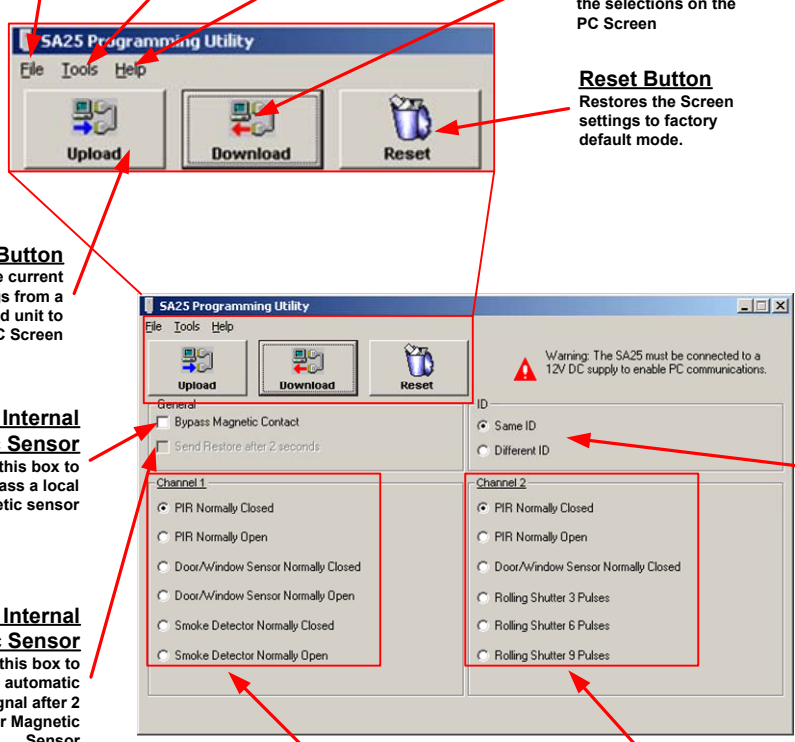
S2

Programming SAK-25 Using PC Software Utility (Version 1.2.0)

You can download the PC Software utility from Rosslare's Software Download Site on the world wide web. For an updated password to the site, please contact your authorized Rosslare Representative.

- 1) Download the software or install it from the CD-Rom by following the instructions.
- 2) Connect one side of the Rosslare RS-232 Data cable to the COM port of the PC.
- 3) Plug the other end, a 3-Pin connector, of the RS-232 Cable to the SAK-25 product, according to the connector polarity.
- 4) Start the utility software on the PC. The following screen with appear.
- 5) Provide power to the SAK-25 unit.
- 6) Make your programming selections and Upload or Download. You have **ONLY 20 seconds** to make a selection before the SAK-25 unit switches to regular operation mode and cannot be programmed.

Default 3-ID's Independent Magnet not functioning Channel 1 (PIR Normally Open)



File Menu
Upload
Download
Reset
Exit

Tools Menu
Options
Language

Help Menu
Help and Instructions

Download Button
Programs a connected unit with the selections on the PC Screen

Reset Button
Restores the Screen settings to factory default mode.

Upload Button
Retrieves the current settings from a connected unit to the PC Screen

Bypass Internal Magnetic Sensor
Check this box to Bypass a local magnetic sensor

Restore Internal Magnetic Sensor
Check this box to activate automatic restore signal after 2 seconds for Magnetic Sensor

Select for 3 Channels same ID Code or Separate ID Codes for RF

Input 1 Programming

Input 2 Programming

Warning: The SA25 must be connected to a 12V DC supply to enable PC communications.

General
 Bypass Magnetic Contact
 Send Restore after 2 seconds

Channel 1
 PIR Normally Closed
 PIR Normally Open
 Door/Window Sensor Normally Closed
 Door/Window Sensor Normally Open
 Smoke Detector Normally Closed
 Smoke Detector Normally Open

Channel 2
 PIR Normally Closed
 PIR Normally Open
 Door/Window Sensor Normally Closed
 Rolling Shutter 3 Pulses
 Rolling Shutter 6 Pulses
 Rolling Shutter 9 Pulses

ID
 Same ID
 Different ID

SAK-25

Instruction Manual

Compatibility: The SAK-25 Wire to RF Transmitter, with Magnetic Contact Sensor, is compatible with a variety of Rosslare's receivers and panels, in 433.92 or 868.35 MHz

PC-LINK PROGRAMMING:

The SAK-25 can be easily programmed visually on the PC Screen and then Downloaded to the Unit by connecting to the PC RS232 COM Port, and running the SAK-25 PC Utility software for Windows.

SAK-25 PC Utility software is designed to be installed and run on:

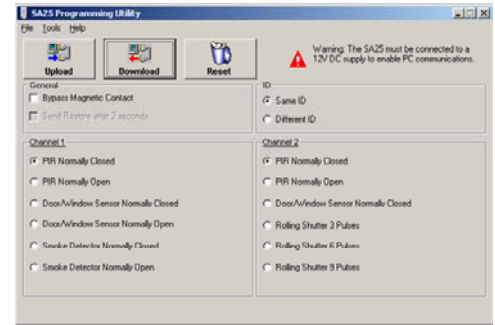
Microsoft's Windows 95/98/ME and NT/2000/XP Operating Systems



SAK-25



PC or Laptop



SAK-25 PC Programming Utility

WIRING DIAGRAM:

Power is supplied to the SAK-25 by a Lithium primary battery.

Two channels are available on the SAK-25 for connection to wired sensor units.

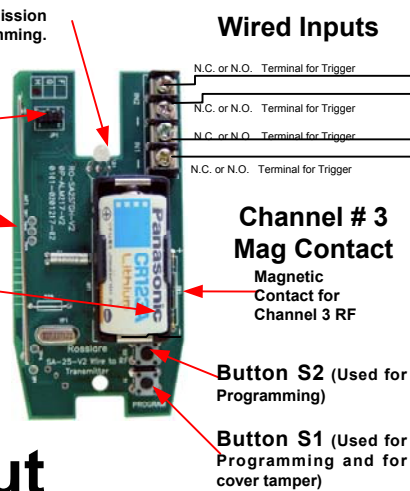
LED Indicates Transmission and is also used for Programming.

RS-232 Communications Port, use Rosslare's RS-232 Data Cable to connect to the 3-pin male connector on SA-25 for communication to PC Upload/Download Software for programming.

Built-in Tuned internal antenna.

Battery Powered 1300mAh Lithium battery.

RF Output



Sensor for Channel # 2

Connects to output of a wired sensor or external device.

PIR / Door / Window / Smoke / Rolling Shutter / Glass Break Detector/



Wired Input 2

Sensor for Channel # 1

Connects to output of a wired sensor or external device.

PIR / Door / Window / Smoke /



Wired Input 1

SPECIFICATIONS

Primary Power Supply : 3-volt Lithium 1300 mA, Model CR123A
CAUTION! Dispose of Properly, do not re-charge, disassemble, heat or incinerate.

Channel 1: Wired Input has two terminal blocks
CH1 is programmable normally open (N.O), normally closed (N.C.), or End Of Line Resistor

Channel 2: Wired Input has two terminal blocks
CH2 is programmable normally open (N.O) or normally closed (N.C.)

Channel 3: Built-in magnetic contact sensor - Normally Closed.
Can be disabled when not in use.

Programming: The SAK-25 Can be programmed locally using the buttons and the LED, as well as by using the PC Utility Software.

Rolling Shutter Contact: Programmable to Channel 2 only.
Selectable pulse count for High, Medium and Low sensitivity, 3 or 6 or 9 pulses to activate.

Operating Temperature: 0°C to +60°C

Operating Humidity: Up to 95% Non-Condensing (max.)

Case Tamper Switch: Removal of SAK-25 Front Cover (Protected by cover tamper switch)

Back Tamper Switch: Removal of SAK-25 from the wall mount (protected by Back tamper switch)

Supervisor: The supervisory signal is routinely transmitted to the panels every 20 minutes, advising the Tamper Status, Battery Status, Event Activation Status

Current Consumption: Standby - 17 uA

Transmit - 14 mA

Size: 98mm x 50mm x 29mm

Weight: 46 grams (3.2 oz)

CE 0678



REL Rosslare Enterprises Ltd.

Copyright Rosslare Enterprises Ltd 1999-2004