

RoyalTek Bluetooth GPS Receiver

RTG-1001 and Car Holder Quick Guide



Check the Package Content

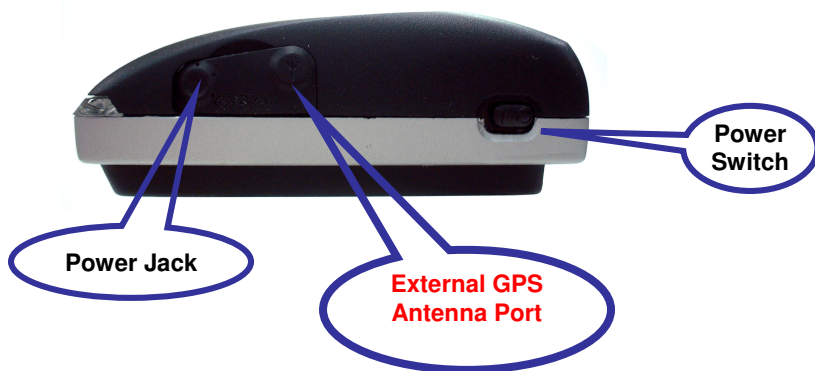
Before start using your RoyalTek Bluetooth GPS + RDS TMC Receiver,

RTG-1001, please check if your package includes the following items. If any item is damaged or missing, please contact your reseller at once.

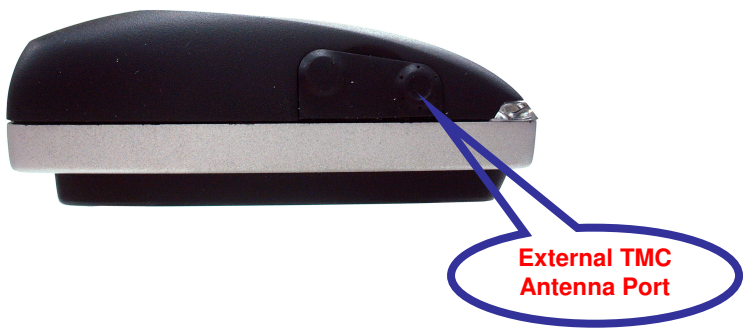
●RTG-1001 ●External TMC Antenna ●Car Charger ●Car Holder ●PDA Adapter Connector ●Navigation Software Kit ●Non-Slip Pad

Power Switch, Power Jack & External Antenna Port

Right View



Left View



LED Display

Front View



	1	2		3		4
	Battery Status			GPS Status		Bluetooth Status
1	Yellow		Yellow LED indicates power is in charging			
2	Red		Blinking red LED indicates low power			
3	Green		Blinking Green LED indicates position is fixed			
4	Blue		Blinking Blue LED indicates Bluetooth is connected			

Getting Started

STEP 1: Charge the Battery

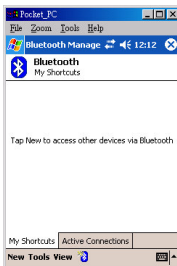
Before you use RTG-1001, the battery must be charged for at least four hours. Plug car charger into power jack and cigar-lighter separately. As RTG-1001 is in charging, the Yellow LED will be lighted up. When the battery is fully charged, the Yellow LED will be turned off. Unplug car charger from power jack and cigar-lighter separately.

STEP 2: Turn on Receiver and wait for GPS fix

If the position has not been fixed yet, the Green LED will be still. If the position has been fixed, the Green LED will be blinking.

STEP 3: Connect to Bluetooth-enabled handheld device

From your Bluetooth-enabled handheld device, execute Bluetooth application software to search RTG-1001 and then connect it to your device. If the connection between your device and RTG-1001 is successful, the Blue LED will be blinking.



New→Connect



Explore a Bluetooth device



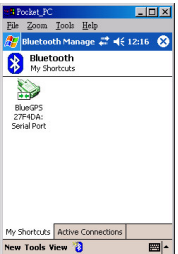
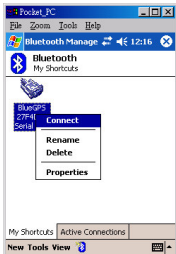
Tap Bluetooth GPS BlueGPSxxxxxx



Select Serial Port



English



Click Finish Tap BlueGPS→Connect Successful

STEP 4: Connect to your Navigation Software

Install and launch your navigation software in Navigation Software Kit and set GPS configuration. Select correct COM port subject to the outbound Bluetooth serial port of your handheld device and correct baud rate depending on your navigation software.

• If you are required to type in pin code during configuration, please key in “0000”.

TMC Function

- ◆ TMC standards for Traffic Message Channel, it allows the end users to receive real time news concerning the traffic conditions. Please refer to the navigation software manual for basic set up process and usage.

How to use Car Holder

1. Joint gooseneck with holder.
 2. Suction mount to windshield or any flat, smooth surface or use self-adhesive power disc connector to mount on other surfaces
 3. Squeeze sides to close and press button to release.
- Never leave your handheld device and the mount in extreme heat.

How to use Car Charger to charge your handheld device

1. Connect car charger into your adapter connector of handheld device.
2. Plug adapter connector into handheld device connector and plug car charger into cigar-lighter.

Tips

1. Place your RTG-1001 below the windshield for car navigation

2. Cars equipped with heat dissipation films for the windshield and windows will affect GPS and TMC performance.
3. The RDS TMC antenna shall be positioned under the front windshield.
4. For the first position fix, please make sure your RTG-1001 is not in motion but stationary and in open space so as to shorten the fix time.

FCC Compliance and Advisory Statement

This device complies with Part 15 of the FCC rules. Operation is subject to the following two conditions: (1) this device may not cause harmful interference, and (2) this device must accept any interference received, including interference that may cause undesired operation.

This equipment has been tested and found to comply with the limits for a Class B digital device, according to Part 15 of the FCC rules. These limits are designed to provide reasonable protection against harmful interference in a residential installation. This equipment generates, uses and can radiate radio frequency energy and if not installed and used in accordance with the instructions, may cause harmful interference to radio communications. However, there is no guarantee that interference will not occur in a particular installation. If this equipment does cause harmful interference to radio or television reception, which can be determined by turning the equipment off and on, the user is encouraged to try correct the interference by one or more of the following measures:

1. Reorient the receiving antenna.
2. Increase the separation between the equipment and receiver.
3. Connect the equipment into an outlet on a circuit different from that to which the receiver is connected.
4. Consult the dealer or an experienced radio/TV technician for help.

Any special accessories needed for compliance must be specified in the instruction manual.

Warning: A shielded-type power cord is required in order to meet FCC emission limits and also to prevent interference to the nearby radio and television reception. It is essential that only the supplied power cord be used. Use only shielded cables to connect I/O devices to this equipment.

CAUTION: Any changes or modifications not expressly approved by the party responsible for compliance could void your authority to operate the equipment.