



Ruckus Wireless™ Virtual SmartZone Data Plane™

Quick Setup Guide for SmartZone 3.2.1

This *Quick Setup Guide* provides basic instructions for setting up the Ruckus Wireless Virtual SmartZone Data Plane (vSZ-D) on the network. For information on advanced configuration and management options, see the *vSZ-D Command Line Interface Reference Guide*, which is available for download from the Ruckus Wireless Support website:
<https://support.ruckuswireless.com/documents>

Before You Begin

Before deploying Ruckus Wireless products, please check for the latest software and the release documentation.

- Release Notes and other user documentation are available at <http://support.ruckuswireless.com/documents>.
- Software upgrades are available at <http://support.ruckuswireless.com/software>.
- Open source information is available at <http://opensource.ruckuswireless.com>.
- Software license and limited warranty information are available at <http://support.ruckuswireless.com/warranty>.

What You Will Need

- A hypervisor on which to install vSZ-D (see [Table 1](#))
- The vSZ-D distribution package (.OVA file), which is available for download from the Ruckus Wireless Support website
- The IP address, netmask, gateway and DNS server addresses assigned to the vSZ controller — if it has a static network address (recommended).
- A virtual machine that meets the recommended system resources for the number of APs and wireless clients that you plan to manage.

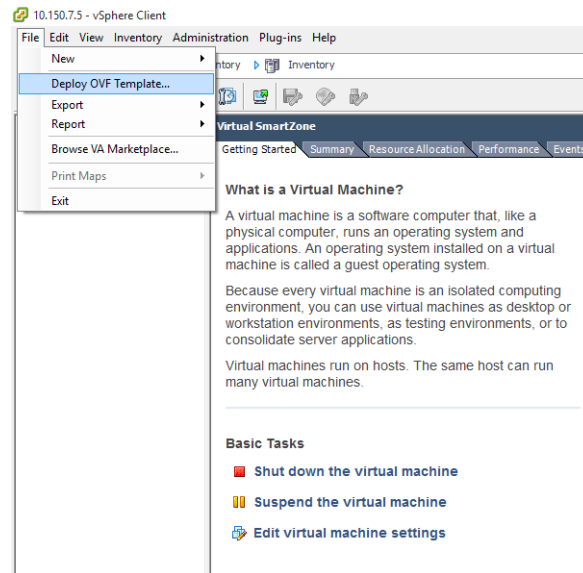
Table 1. Hypervisors that vSZ-D supports

Vendor	Hypervisor	Version
VMWare	ESXi	5.5
KVM	Linux	CentOS 7.0

Step 1: Install and Start vSZ-D on the Hypervisor

Using the .OVA file that you downloaded from the Ruckus Wireless Support site, install an instance of the vSZ-D on the hypervisor.

#1 On the vSphere client, click **File**, > **Deploy OVF template**.

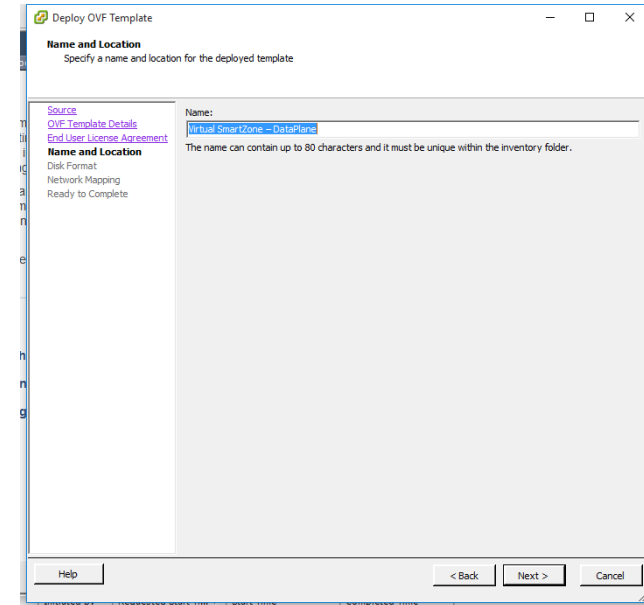


#2 Select the vSZ-D OVA file that you downloaded from the Ruckus Wireless Support website, and then click **Next**.

#3 Review the OVF template details, and then click **Next**.

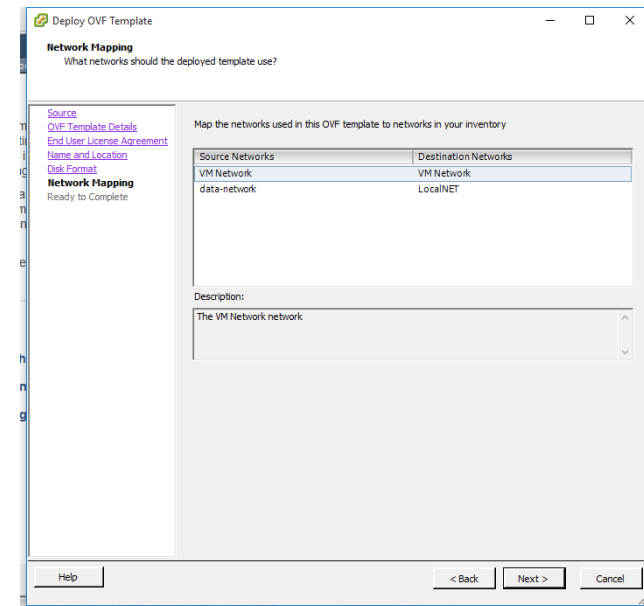
#4 Read and accept the end user license agreement, and then click **Next**.

#5 Assign a name to this vSZ-D instance that you are deploying (or accept the default name), and then click **Next**.



#6 Select the disk format that you want to use for your deployment, and then click **Next**.

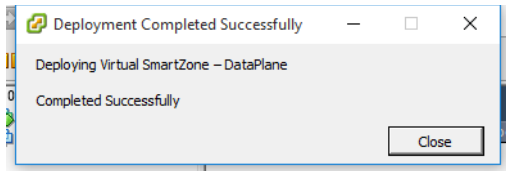
#7 Select the network mapping that you want this vSZ-D instance to use, and then click **Next**.



#8 Click **Finish** to start the vSZ-D deployment.

A progress bar appears and displays the vSZ-D installation status. When the installation process is complete, the following message appears:

Deployment Completed Successfully



#9 Click **Close**.

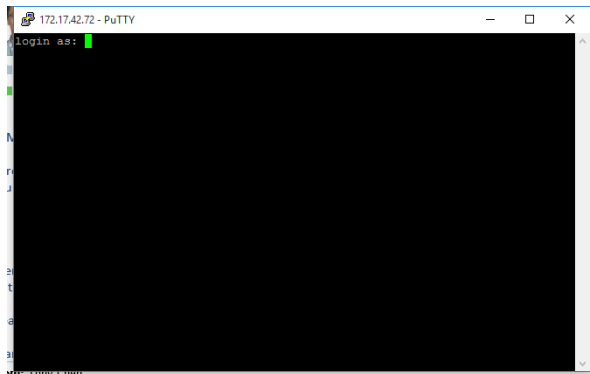
#10 On the *Getting Started* tab of the vSphere client, click **Power on the virtual machine** to start the vSZ-D instance that you installed.

You have completed deploying and starting a vSZ-D instance.

Step 2: Run and Complete the vSZ-D Setup

In this step, you will define the management and data interface settings that you want vSZ-D to use.

#1 Use an SSH client to connect to the IP address assigned to the vSZ-D instance. Alternatively, click the Console tab on the vSphere client to connect to the vSZ-D instance via SSH.



#2 In `login as:`, enter **admin**. The message “Welcome to vSZ-D” appears.

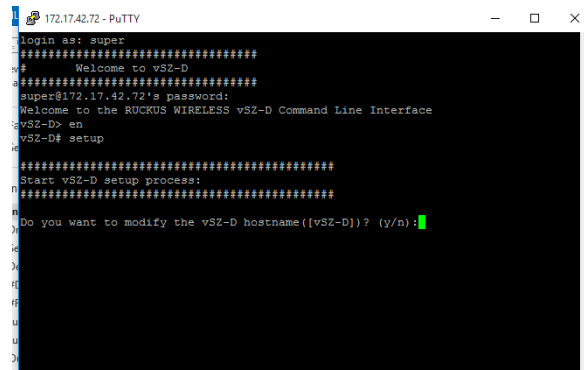
#3 In `password:` enter **admin**. The vSZ-D prompt appears.

#4 Enter **en** to enter the privileged mode. The vSZ-D# prompt appears.

#5 Enter **setup**. The message “Start vSZ-D setup process” appears.

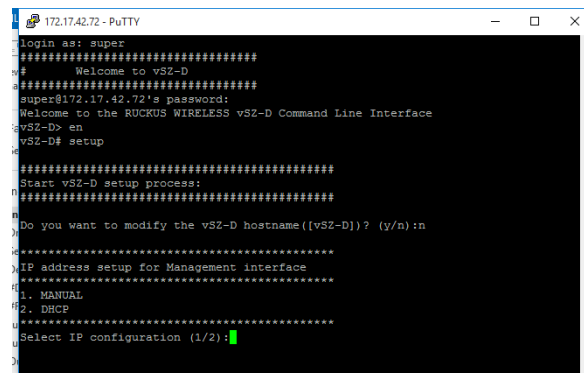
#6 When the prompt “Do you want to modify the vSZ-D hostname ([vSZ-D])? (y/n),” enter **n** to keep the default host name or **y** to change it.

If you entered **y**, the next prompt asks you to enter the new hostname.



#7 The next prompt asks you to choose how you want to set up the management interface IP address. Enter **1** if you want to manually assign an IP address to the management interface or enter **2** to automatically obtain an IP address from a DHCP server on the network.

If you entered **1** (Manual), the next prompt asks you to enter the IP address settings that you want to manually assign.

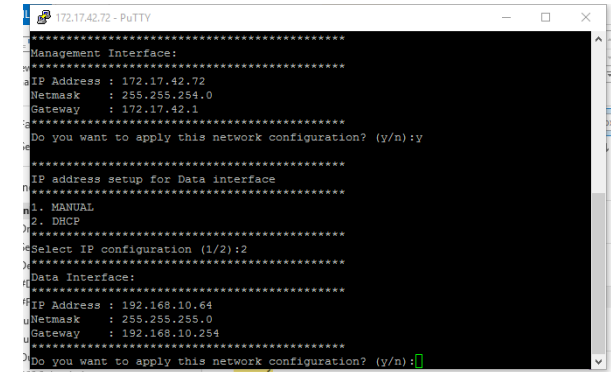


#8 The next prompt asks you to confirm that you want to apply the IP address settings that you configured in the previous prompts. Enter **y** to confirm and continue.

#9 The next prompt asks you to choose how you want to set up the data interface IP address. Enter **1** if you want to manually assign an IP address to the data interface or enter **2** to automatically obtain an IP address from a DHCP server on the network.

If you entered **1** (Manual), the next prompt asks you to enter the IP address settings that you want to manually assign.

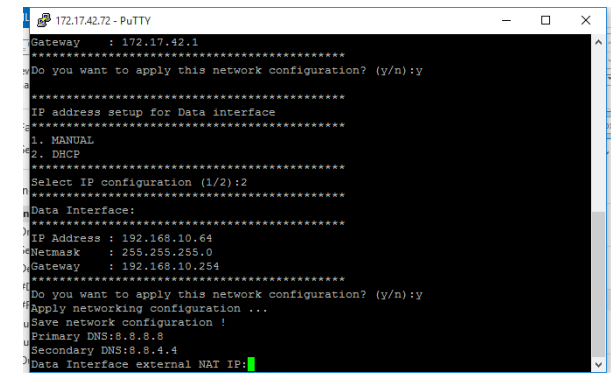
#10 The next prompt asks you to confirm that you want to apply the IP address settings that you configured in the previous prompts. Enter **y** to confirm and continue. The message “Apply networking configuration...” appears.



#11 At the **Primary DNS** prompt, enter the IP address or host name of the primary DNS server that you want vSZ-D to use.

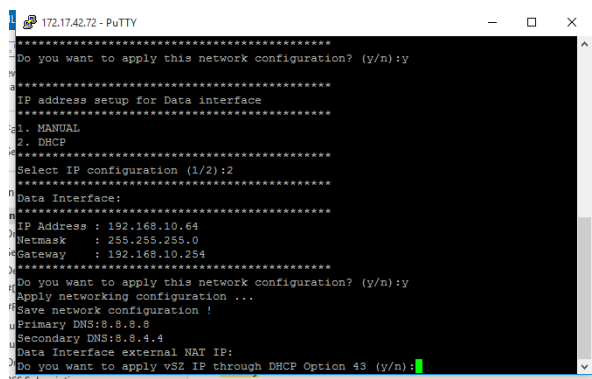
#12 At the **Secondary DNS** prompt, enter the IP address or host name of the secondary DNS server that you want vSZ-D to use.

#13 At the **Data Interface external NAT IP** prompt, enter the public IP address of the NAT server (if you have one) on the network. If you do not have a NAT server on the network, leave the field blank and simply press **<Enter>**.



#14 The next prompt asks you if you want vSZ-D to automatically discover a vSZ controller on the network using DHCP Option 43 (if you have configured this on your DHCP server). Enter **y** to use DHCP Option 43 or enter **n** to manually enter the vSZ controller's IP address.

If you entered n, the next prompt asks you for the IP address of the vSZ controller with which you want this vSZ-D instance to join.



```
172.17.42.72 - PuTTY
*****
Do you want to apply this network configuration? (y/n):y
*****
IP address setup for Data interface
*****
1. MANUAL
2. DHCP
Select IP configuration (1/2):2
*****
Data Interface:
*****
IP Address : 192.168.10.64
Netmask   : 255.255.255.0
Gateway   : 192.168.10.254
*****
Do you want to apply this network configuration? (y/n):y
Apply networking configuration ...
Save network configuration !
Primary DNS:8.8.8.8
Secondary DNS:8.8.4.4
Data Interface external NAT IP:
Do you want to apply vSZ IP through DHCP Option 43 (y/n):
```

#15 At the new password prompt, enter the password that you want to assign to the vSZ-D management interface.

The message `Setup vSZ-D Done !!` appears. You have completed setting up vSZ-D on the network.

Step 3: Approve vSZ-D to Register with the vSZ Controller

The last step is to approve vSZ-D to allow it to join the vSZ controller on the network.

- #1 Log on to the web interface of the vSZ controller with which you want vSZ-D to register.
- #2 Go to **Configuration > System**.
- #3 On the side menu, click **Cluster Planes**.
- #4 On the *Cluster Planes* page, scroll down to the *Data Planes* section.
- #5 Locate the vSZ-D instance that you deployed, and then click **Approve** under the *Actions* column.

You have completed approving vSZ-D to register with vSZ.

Related Documentation

You can configure the vSZ-D from the command line interface (CLI). For information on how to use the CLI to configure the vSZ-D, see the *vSZ-D Command Line Interface Reference Guide*.