

**FAST WIRELESS CHARGER CAR MOUNT**

Please read this operation instruction carefully before using this product and keep it properly.

**Thank you for purchasing and using this product!**

In order to bring you a better experience, read this manual and also please consult your mobile phone manual and electronic product manual.

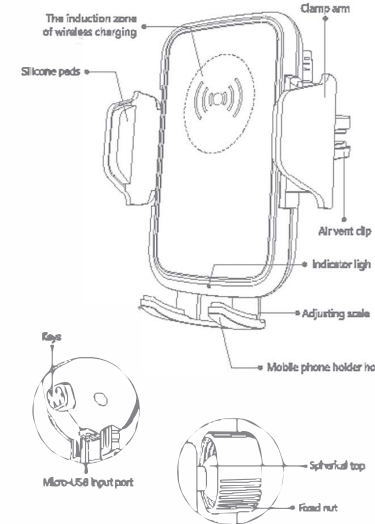
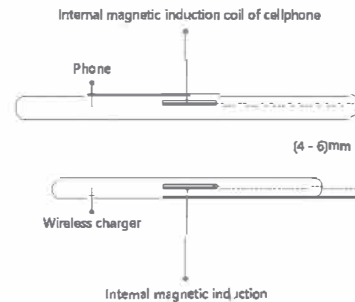
**Product Specifications**

Product Name	Fast Wireless Charger Car Mount
Model	CTEZ65
Size	≈(120×70×58)mm
Net Weight	≈120g
Input	5V=2A / 9V=2A
Output	10W Max
Charging Induction Distance	≈(4-6)mm
Application Model	Compatible with cellphones adopting Qi standard: iPhone, Samsung, LG, Moto etc.
Package Includes	Fast wireless charger car mount ×1, Micro-USB charging cable ×1, Air vent clip ×1, Instruction book ×1

The parameters above are derived from the laboratory of DesertWest, the actual parameters would be different due to production process and other factors. The image shown here is indicative only.

**Product Overview**

Charging induction distance: the distance between the inner magnetic induction coil of the cellphone and the fast wireless charger car mount is about (4-6) mm. the thickness of mobile phone case should not exceed 4mm, the thickness of cellphone and cellphone shell together shall not exceed 13mm, and the cellphone should be prevented from being taken with a thicker cellphone shell.



**Instructions**

The mobile phone holder hook corresponds to the phone model

DROP POSITION	PHONE MODEL
Scale 1. (5.0" - 5.5")	Samsung S8/S8+/S9/S9+/iPhone 8 plus
Scale 2. (6.3" - 6.4")	Note 8

You can adjust the holder hook position of the phone's toggle to align the center of the phone with the wireless charging lightning symbol.

**How to use the air vent clip**



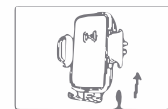
1. Unscrew the fixed nut and choose the air vent clip, set the ball in the fixed nut. Push the head of the ball into the back of the car mount.



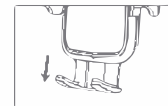
2. Rotate clockwise to tighten the nut, then it is able to adjust the angle of the fast wireless charger car mount.



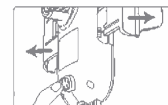
3. Fix the fast wireless charger car mount on the suitable place of outlet. There are two gears in the clip left or right can be selected. It is recommended that the thick wind leaf choose one "I", thin choose two "II".



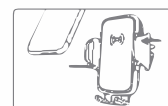
4. Plug the Micro-USB charging cable into the power interface. Turn on the power. The blue indicator light is on and then goes out, entering into the standby state.



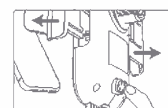
5. Pull down the mobile phone holder hook and the area of height adjustment scale appears. Customers can adjust the height of the mobile phone holder hook according to the sizes of their mobile phones, align the mobile phone center with the lightning symbol of wireless charging.



6. Press the button on the back of the bracket, the arm lock will extend automatically.



7. Put in the mobile phone. Press the both sides of the arm lock with fingers to tighten the arm dock, which can fix the phone.



8. After use, press the button on the back of the bracket again. The arm lock will extend automatically. You can take out your phone from the mount easily as shown in the picture.

**Notes**

- Please install the car holder in the good condition before driving navigation and do not operate and adjust the bracket during driving.
- The fast wireless charger car mount is only applicable to the size from "4 to 6.4" and width is less than "3.3" Qi-Enabled mobile phones.
- This product supports 10W Max wireless charging. 10W model: Using QC2.0/QC3.0 adapter (9V=1.68A) is compatible with Samsung Galaxy S9/S9+/S8/S8+/S7/S7 edge/S6 edge+/Note 9/Note 5 series devices; 5W model: Using 5V=2A adapter is for any Qi-enabled devices like iPhone X/iPhone8/iPhone8 plus and other Qi-enabled phones. Please select the most suitable adapter for your mobile phone.
- Please not put over 4mm thickness case (Like OtterBox, LifeProof, UAG, Zizo, Spigen, Rugged case), Ring Metal Holder, metal plate sticker, credit card and PopSockets on your phone.
- Please turn on car vent condition when in hot day or long time use, it'll help you to cool down the fast wireless charger car mount and speed up charging speed.
- Low power, please turn off the screen and charge your phone for 10 minutes. Then open your map, it can avoid lose power very quickly.
- When the indicator light is powered on, the blue light lights up and then goes out. The blue breathing lamp lights up and then goes out when charging normally. Blue lights flicker continuously when foreign objects are detected.
- Not toys for fun, please keep it away from children.

**FCC Statement**

This device complies with part 15 and part 18 of the FCC Rules. Operation is Subject To the following two conditions:

(1) This device may not cause harmful interference, and (2) this device must accept any interference received, including interference that may cause undesired operation. Changes or modifications not explicitly approved by the party responsible for compliance could void the user's authority to operate this equipment.

Note: this equipment has been tested and found to comply with the limits for a Class B digital device, pursuant to part 15 and part 18 of the FCC Rules. These limits are designed to provide reasonable protection against harmful interference in a residential installation. This equipment generates, uses and can radiate radio frequency energy and, if not installed and used in accordance with the instructions, may cause harmful interference to radio communications. However, there is no guarantee that interference will not occur in a particular installation. If this equipment does cause harmful interference to radio or television reception, which can be determined by turning the equipment off and on, the user is encouraged to try to correct the interference by one or more of the following measures:

- Reorient or relocate the receiving antenna.
- Increase the separation between the equipment and receiver.
- Connect the equipment into an outlet on a circuit different from that to which the receiver is connected.
- Consult the dealer or an experienced radio/TV technician for help.

The equipment complies with FCC radiation exposure limits set forth for an uncontrolled environment. During the operation of device a distance of 15 cm surrounding the device and 20 cm above the top surface of the device must be respected.

This device complies with Part 18 of the FCC Rules. This equipment generates uses and can radiate radio frequency energy and, if not installed and used in accordance with the instructions, may cause harmful interference to radio communications. If this equipment does cause harmful interference to radio or television reception, which can be determined by turning the equipment off and on, the user is encouraged to try to correct the interference by one or more of the following measures:

- Increase the separation between the equipment and any other radio device.
- Connect the equipment into an outlet on a circuit different from that to which the receiver is connected.



**Warranty Card**

Customer Name: \_\_\_\_\_

Phone Number: \_\_\_\_\_

Product Name: \_\_\_\_\_

Date of Purchase: \_\_\_\_\_

Address: \_\_\_\_\_

Notes: \_\_\_\_\_

RUI DA SHENG TECHNOLOGY (SHENZHEN) CO., LTD.

ADD : 23803, HAERBIN BUILDING, 7045# BEIHUAN ROAD, KANGXIN COMMUNITY, LIANHUA STREET, FUTIAN DISTRICT, SHENZHEN, GUANGDONG, CHINA

E-MAIL: SERVICE@DESERTWEST.CN  
WEB: WWW.DESERTWEST.CN

DESERTWEST IS THE TRADEMARK REGISTERED IN U.S AND OTHER COUNTRIES, ALL RIGHTS RESERVED.

MADE IN CHINA

B							
	日期	20180828					

