

## WIRELESS CAR CHARGER MOUNT

Please read this operation instruction carefully and keep it properly before using this product.

Dear Customer,

Congratulations on your purchase of VICSEED wireless car charger mount !

We hope you will be pleased with both of the products and service you received. E-mail us, to get all issues resolved within 24hrs.

VICSEED Customer Support: support@vicseed.com

Sincerely,  
Vicseed Customer Service

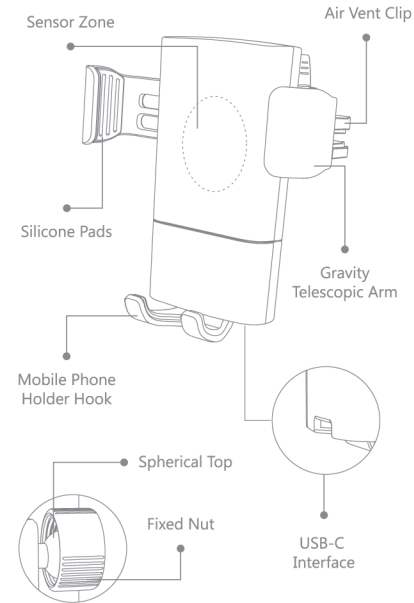
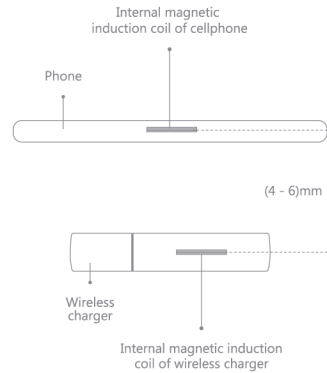
### Product Specifications

Product Name	Wireless car charger mount
Model	CTEZ68
Size	≈(100×100×50)mm
Net Weight	≈89g
Input	5V≈2A, 9V≈1.67A, 12V≈1.5A
Output	5W/7.5W/10W
Charging Distance	≈(4-6)mm
Application Model	Compatible with Qi standard cellphone: iPhone, Samsung, LG, Moto etc.
Package Includes	Wireless car charger mount ×1, USB-C charging cable ×1, Air vent clip ×1, Instruction book ×1

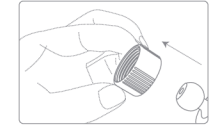
The parameters above are derived from the laboratory of VICSEED, the actual parameters would be different because of products or other factors. The images shown here are only for reference.

### Product Overview

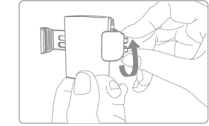
Charging induction distance: the distance between the inner magnetic induction coil of the cellphone and the wireless car charger mount is about (4-6) mm. The thickness of mobile phone case should not exceed 4mm, the thickness of cellphone and cellphone shell together shall not exceed 12mm, and the cellphone should be prevented from being taken with a thicker cellphone case while using this car mount.



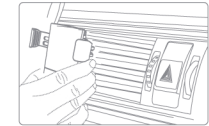
### Instructions



1. Unscrew the fixed nut and choose the air vent clip, set the ball in the fixed nut. Push the head of the ball into the back of the car mount.



2. Rotate clockwise to tighten the nut, then it is able to adjust the angle of the wireless car charger mount.



3. Fix the wireless car charger mount on the suitable place of outlet. There are two gears in the clip, left or right can be selected, it is recommended that the thick wind leaf choose one " I ", thin choose two " II ".



4. Put the cell phone in the wireless car charger mount. Gravity linkage and lock the phone automatically, then the wireless car charger starts to charge your mobile phone immediately.



5. You can take out your phone from the mount easily as shown in the picture.

### Notes

1. Please install the car holder in the good condition before driving navigation and do not operate and adjust the bracket during driving.
2. The wireless car charger mount is only applicable to the size from 4" to 6.4" and width is less than 3.3", Qi Enabled mobile phones.
3. This product supports three wireless charging modes: 7.5w, 10W and 5W. 7.5W model: Using QC2.0/QC3.0 adapter (9V≈1.67A) is compatible with iPhone 8/ iPhone8 plus/ iPhone X ; 10W model: Using QC2.0/QC3.0 adapter(9V≈1.67A) is compatible with Samsung Galaxy S9/ S9+/S8/S8+/S7/S7 edge/S6 edge+/Note 9/Note 5 series devices; 5W model: Using 5V≈2A adapter is for any Qi-enabled devices like iPhone X/iPhone8/iPhone8 plus and other Qi-enabled phones. Please select the most suitable adapter for your mobile phone.
4. Please do not carry a mobile phone shell with the thickness more than 4mm(e.g. OtterBox, LifeProof, UAG, Zizo, Spigen, phone shells of uneven surfaces). Don not install metal rings, metal patches, credit cards and PopSockets on your phone. Don not use a phone shell on the back of metal to avoid damaging the car bracket or avoid the invalid function of wireless charging.
5. Please turn on car vent condition(fan) when in hot day or long time use, it'll help you to cool down the wireless car charger and speed up charging speed.
6. Low power, please turn off the screen and charge your phone for 10 minutes. Then open your map, it can avoid losing power very quickly.
7. This product only support vertical mode, do not support landscape mode.
8. Not toys for fun, please keep it away from children.

### FCC Statement

This device complies with part 15 and part 18 of the FCC Rules. Operation is Subject To the following two conditions:(1) This device may not cause harmful interference, and (2) this device must accept any interference received, including interference that may cause undesired operation. Changes or modifications not explicitly approved by the party responsible for compliance could void the user's authority to operate this equipment.

Note: this equipment has been tested and found to comply with the limits for a Class B digital device, pursuant to part 15 and part 18 of the FCC Rules. These limits are designed to provide reasonable protection against harmful interference in a residential installation. This equipment generates, uses and can radiate radio frequency energy and, if not installed and used in accordance with the instructions, may cause harmful interference to radio communications. However, there is no guarantee that interference will not occur in a particular installation. If this equipment does cause harmful interference to radio or television reception, which can be determined by turning the equipment off and on, the user is encouraged to try to correct the interference by one or more of the following measures:

- Reorient or relocate the receiving antenna.
  - Increase the separation between the equipment and receiver.
  - Connect the equipment into an outlet on a circuit different from that to which the receiver is connected.
  - Consult the dealer or an experienced radio/TV technician for help.
- The equipment complies with FCC radiation exposure limits set forth for an uncontrolled environment. During the operation of device a distance of 15 cm surrounding the device and 20 cm above the top surface of the device must be respected. This device complies with Part 18 of the FCC Rules. This equipment generates, uses and can radiate radio frequency energy and, if not installed and used in accordance with the instructions, may cause harmful interference to radio communications. If this equipment does cause harmful interference to radio or television reception, which can be determined by turning the equipment off and on, the user is encouraged to try to correct the interference by one or more of the following measures:
- Increase the separation between the equipment and any other radio device.
  - Connect the equipment into an outlet on a circuit different from that to which the receiver is connected.

### Warranty Card

Order ID: \_\_\_\_\_

Buyer Name: \_\_\_\_\_

Phone Number: \_\_\_\_\_

Email Address: \_\_\_\_\_

Shipping Address: \_\_\_\_\_

Notes: \_\_\_\_\_

★★★★★ What can VICSEED do for you?

- ♥ Customer Support: support@vicseed.com
- ♥ 30-day money-back guarantee for ANY reason
- ♥ Lifetime Free User Support
- ♥ 12-month warranty for quality-related issues

For 12 months after the date of purchase, we take care of all quality-related issues(Except battery) with a REPLACEMENT OR FULL REFUND. (Reminder: Be sure to use your product as directed.)

We hope you enjoying the best Amazon shopping experience on VICSEED!



SHENZHEN HOMGMI TECHNOLOGY CO., LTD.

Add : RM 208, No.105-3, Jinyun RD, Buiji ST, Longgang DIST, Shenzhen, China

Email : support@vicseed.com  
Web : www.vicseed.com

Shenzhen Homgmi Technology Co., Ltd. All Rights Reserved.

Made in China