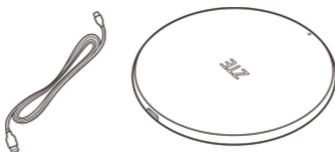
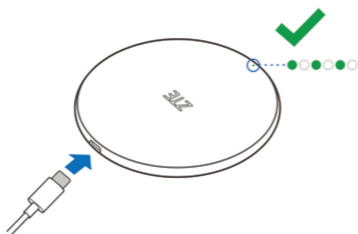


# ZTE Wireless Charger GK D!5 ) - 5 !E7 `Quick Start Guide

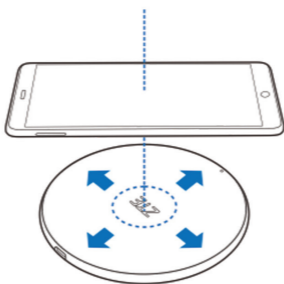
1



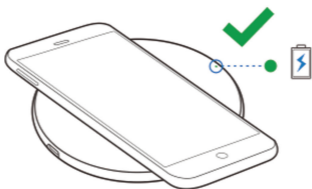
2



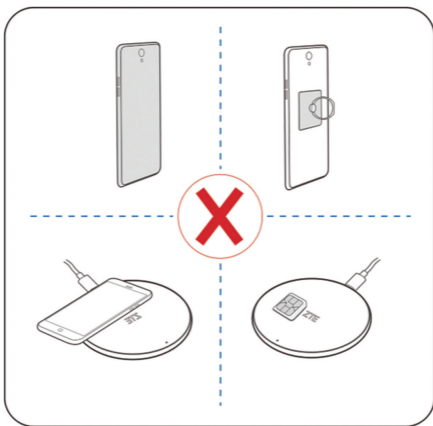
3



4



!



## Indicator Light

Indicator	Status
Green blinking 3 times	When the wireless charger is connected to the power source normally.
Green on	The phone is being charged on the wireless charger.
Off	The wireless charger is not connected to the power source or your phone isn't on the charger.
Blue blinking	The wireless charger is in abnormal status.

## Specifications

Product Name	ZTE Wireless Charger
Model	SWP-A59A-QC
Input	DC 5 V & 9 V, 2.0 A
Output	DC 5 V, 1 A & 9V, 1.1 A
Size	102.5*102.5*10.5 mm
Weight	80 g
Operating temperature	0°C ~ +35°C

## Getting More Help

You can get help by:

- Sending an email to [mobile@zte.com.cn](mailto:mobile@zte.com.cn)
- Visiting [www.ztedevices.com](http://www.ztedevices.com)

## Warning and Notice

- Use original adapter or adapter that is authorized. Using any unauthorized adapter may affect the performance of the wireless charger.
- It is not recommended that using any phone protective case, it may affect the wireless charging function.
- The wireless charger is not waterproof. Keep it dry and store it in a shady and cool place.
- Handle the wireless charger carefully. Do not drop, bend or strike it. Otherwise the wireless charger may be damaged.
- Keep the wireless charger out of the reach of little children. The wireless charger may cause an injury if used as a toy.
- Do not disassemble the wireless charger.
- Do not use the wireless charger immediately after a sudden temperature change. In such case dew may be generated inside and outside the wireless charger, so do not use it until it becomes dry.
- Use an antistatic cloth to clean the wireless charger. Do not use chemical or abrasive cleanser as these could damage the wireless charger. Disconnect the power before cleaning.
- The wireless charger is only for your smart phone. Do not put any other object on it.

## LEGAL INFORMATION

Copyright © 2018 ZTE CORPORATION.

All rights reserved.

No part of this publication may be excerpted, reproduced, translated or utilized in any form or by any means, electronic or mechanical, including photocopying and microfilm, without the prior written permission of ZTE Corporation.

### **Trademark**

ZTE and the ZTE logos are trademarks of ZTE Corporation.

### **Notice**

ZTE Corporation reserves the right to make modifications on print errors or update specifications in this guide without prior notice.

**Version No.:** R1.0

## Declaration of RoHS Compliance

To minimize the environmental impacts and take more responsibilities to the earth we live on, this document shall serve as a formal declaration that ZTE Wireless Charger manufactured by ZTE CORPORATION is in compliance with the Directive 2011/65/EU of the European Parliament - RoHS (Restriction of Hazardous Substances) with respect to the following substances:



1. Lead (Pb)

2. Mercury (Hg)
3. Cadmium (Cd)
4. Hexavalent Chromium (Cr (VI))
5. Polybrominated biphenyls (PBBs)
6. Polybrominated diphenyl ethers (PBDEs)

ZTE Wireless Charger manufactured by ZTE

CORPORATION meets the requirements of Directive 2011/65/EU.

## Disposal of Your Old Appliance

 	<ol style="list-style-type: none"><li>1. When this crossed-out wheeled bin symbol is attached to a product, it means the product is covered by the European Directive 2012/19/EU.</li><li>2. All electrical and electronic products should be disposed of separately from the municipal waste stream via designated collection facilities appointed by the government or the local authorities.</li><li>3. The correct disposal of your old appliance will help prevent potential negative consequences for the environment and human health.</li></ol>
---	---

For this product's recycling information based on WEEE directive, please send an e-mail to [weee@zte.com.cn](mailto:weee@zte.com.cn)

## **FCC STATEMENT :**

This device complies with Part 15 of the FCC Rules. Operation is subject to the following two conditions:

- (1) This device may not cause harmful interference, and
- (2) This device must accept any interference received, including interference that may cause undesired operation.

Warning: Changes or modifications not expressly approved by the party responsible for compliance could void the user's authority to operate the equipment.

NOTE: This equipment has been tested and found to comply with the limits for a Class B digital device, pursuant to Part 15 of the FCC Rules. These limits are designed to provide reasonable protection against harmful interference in a residential installation. This equipment generates uses and can radiate radio frequency energy and, if not installed and used in accordance with the instructions, may cause harmful interference to radio communications. However, there is no guarantee that interference will not occur in a particular installation. If this equipment does cause harmful interference to radio or television reception, which can be determined by turning the equipment off and on, the user is encouraged to try to correct the interference by one or more of the following measures:

- Reorient or relocate the receiving antenna.
- Increase the separation between the equipment and receiver.
- Connect the equipment into an outlet on a circuit different from that to which the receiver is connected.
- Consult the dealer or an experienced radio/TV technician for help.



**FCC Radiation Exposure Statement:**

This equipment complies with FCC radiation exposure limits set forth for an uncontrolled environment. This equipment should be installed and operated with minimum distance 15cm between the radiator & your body.



**ZTE CORPORATION**

NO. 55, Hi-tech Road South, Shenzhen, P.R.China

Postcode: 518057