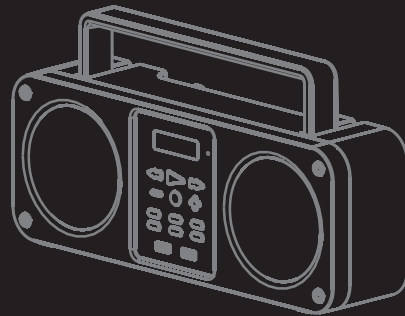




S•DIGITAL

# Mission

Portable Boombox Speaker System



**GB-3300**  
**QUICK START**



The lightning flash and arrowhead within the triangle is a warning sign alerting you of "dangerous voltage" inside the product.

**CAUTION**  
RISK OF ELECTRIC SHOCK  
DO NOT OPEN

**WARNING:**  
To reduce the risk of electric shock, do not remove cover (or back). No user-serviceable parts inside. Refer servicing to qualified service personnel.



**CAUTION:**  
The exclamation point within the triangle is a warning sign alerting you of important instructions accompanying the product.



**CAUTION:**  
To reduce the risk of fire or electric shock or damage, do not expose this appliance/ apparatus (including all it's accessories such as AC-adaptor, etc.) to dripping or splashing liquids, and no object filled with liquids should be placed on the appliance/ apparatus (including all it's accessories).

**PLEASE NOTE:** YOU WILL FIND THE RATING LABEL FOR THIS PRODUCT LOCATED ON THE REAR OF THE UNIT.

**CAUTION:** GROUNDING OR POLARIZATION: THE PRECAUTIONS SHOULD BE TAKEN SO THAT THE WIDER BLADE OF THE AC PLUG (OF AC-ADAPTOR) MUST MATCH THE SLOT IN RECEPTACLE "WALL SOCKET". (ONLY IF YOUR AC PLUG IS POLARIZED)

**NOTE:** CAUTION SYMBOLS ARE PRINTED ON REAR OF UNIT OR ACCESSORIES. PLEASE REFER TO INSTRUCTION MANUAL.

- KEEP MINIMUM DISTANCES (5cm) AROUND THE APPARATUS FOR SUFFICIENT VENTILATION.
- THE VENTILATION SHOULD NOT BE IMPEDED BY COVERING THE VENTILATION OPENINGS WITH ITEMS SUCH AS NEWSPAPER, TABLE-CLOTHS, CURTAINS ETC.
- NO NAKED FLAME SOURCE SUCH AS LIGHTED CANDLES SHOULD BE PLACED ON THE APPARATUS.
- ATTENTION SHOULD BE DRAWN TO THE ENVIRONMENTAL ASPECTS OF BATTERY DISPOSAL.

**CAUTION : RISK OF EXPLOSION IF BATTERY IS REPLACED BY AN INCORRECT TYPE. DISPOSE OF USED BATTERIES ACCORDING TO THE INSTRUCTIONS.**

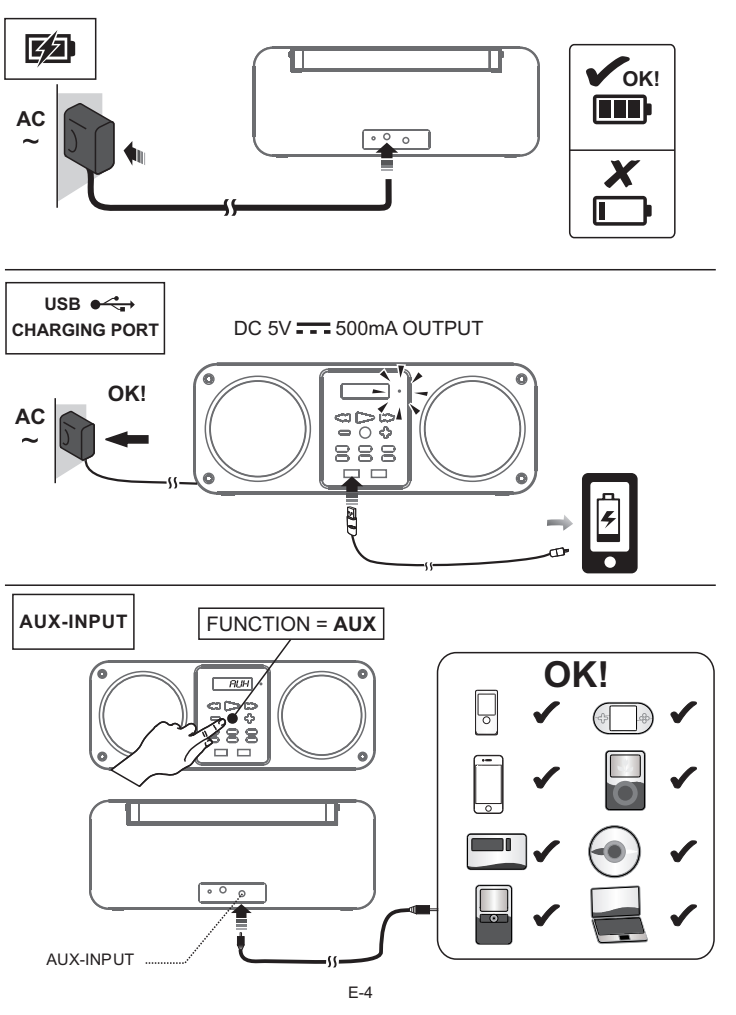
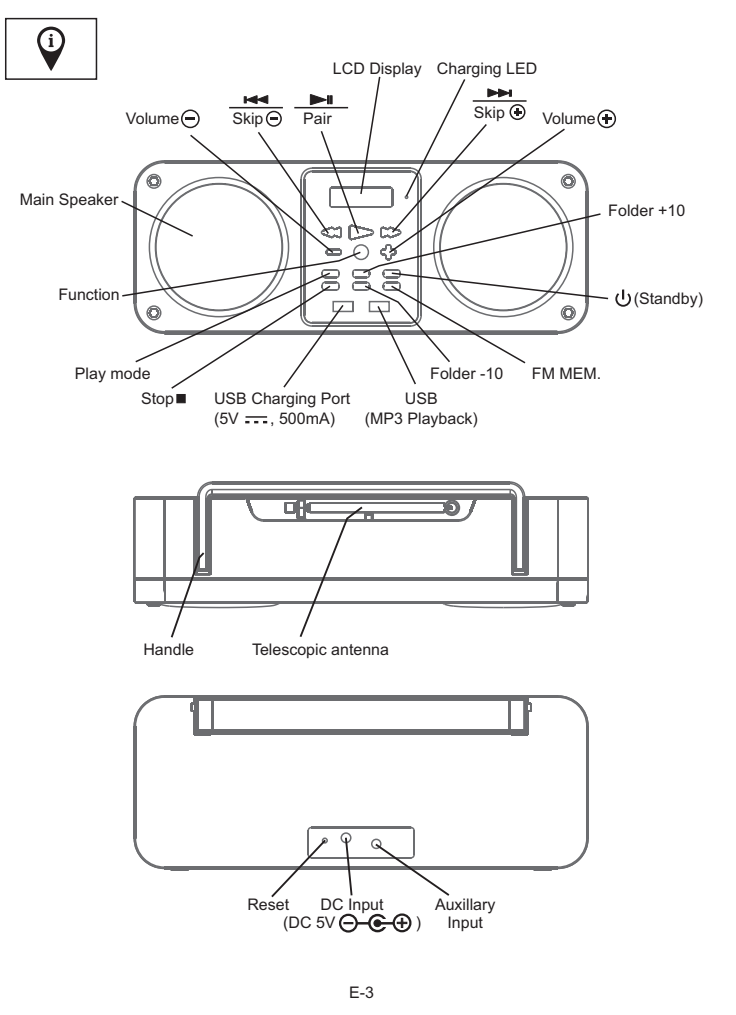
The device complies with Part 15 of the FCC Rules. Operation is subject to the following two conditions: (1) this device may not cause harmful interference, and (2) this device must accept any interference received, including interference that may cause undesired operation.

Changes or modifications not expressly approved by the party responsible for compliance could void the user's authority to operate the product.

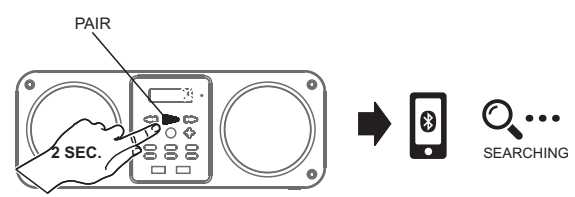
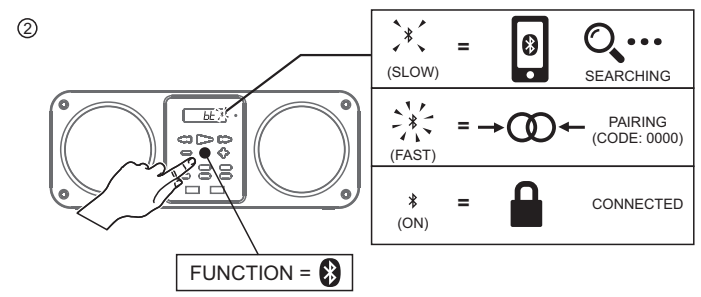
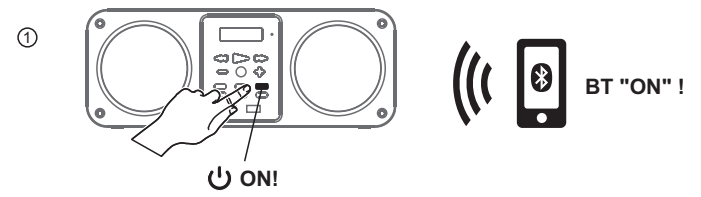
**NOTE:** This product has been tested and found to comply with the limits for a Class B digital device, pursuant to Part 15 of the FCC Rules. These limits are designed to provide reasonable protection against harmful interference in a residential installation. This product generates, uses and can radiate radio frequency energy and, if not installed and used in accordance with the instructions, may cause harmful interference to radio communications.

However, there is no guarantee that interference will not occur in a particular installation. If the product does cause harmful interference to radio or television reception, which can be determined by turning the equipment off and on, the user is encouraged to try to correct the interference by one or more of the following measures : -Reorient or relocate the receiving antenna. -Increase the separation between the product and receiver. -Connect the product into an outlet on a circuit different from that to which the receiver is connected. -Consult the dealer or an experienced radio/TV technician for help.

-Consult the dealer or an experienced radio/TV technician for help.

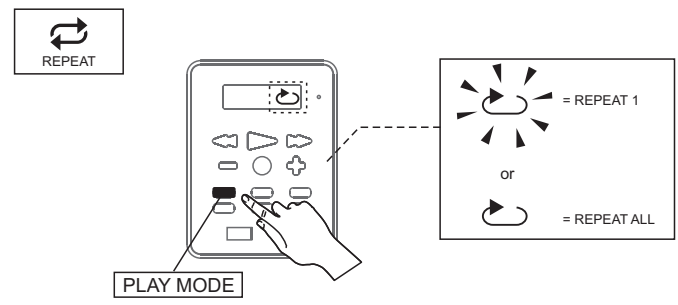
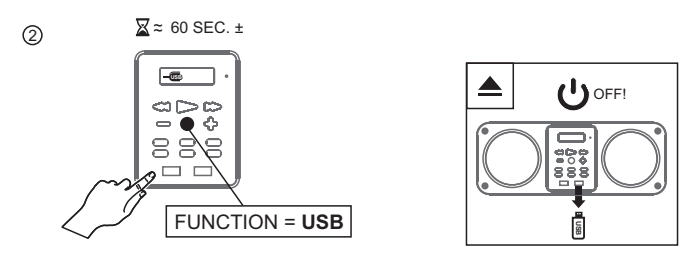
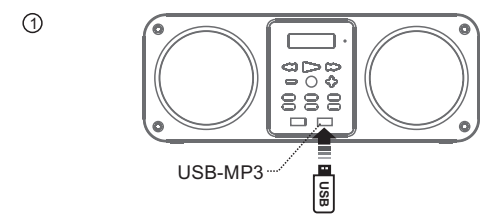


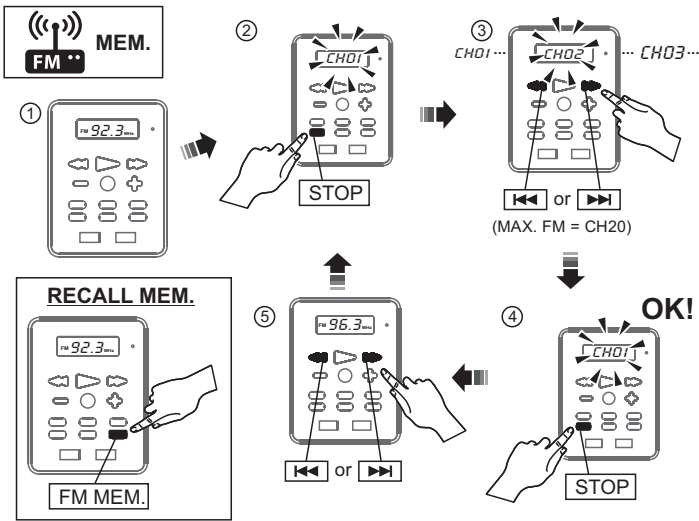
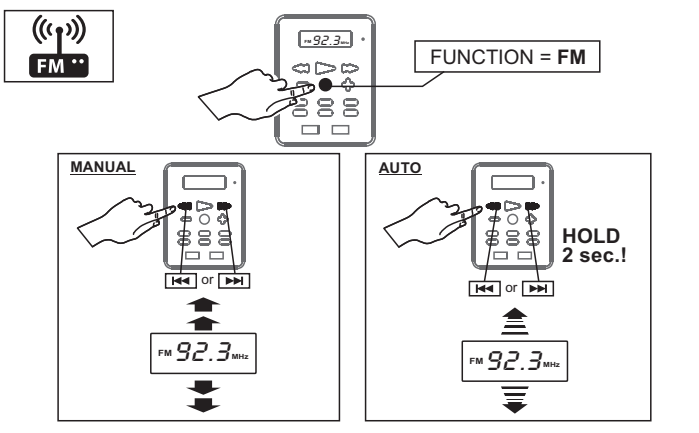
**Bluetooth** 



In order to avoid interferences, please de-activate Wi-Fi on your device (smartphone, tablet, etc.) when playing music using *Bluetooth*®

**USB-MP3** 





E-7



Power Supply : ..... Rechargeable Lithium 3.7V/ 1100mAh X 1 PC. (Built-in)  
 AC-Charger Input : ..... AC 100V-240V ~ 50/60Hz  
 AC-Charger Output = DC-Input of unit : ..... DC 5V , 1.5A  
 Recharge Power : ..... USB 5V (minimum 500mA)  
 Radio Frequency : ..... FM 87.5 - 108 MHz  
 Speakers : ..... 3"x2  
 Wireless Range (BT) : ..... 10M (30 Ft.)  
 Max. BT Pairing Memory : ..... 6 Devices  
 FM Station Memory : ..... 20 Stations

E-8

