

FM Transmitter

T15A



User Manual

Introduction:

Thanks for choosing our smart phone holder, this device keep your phone visible, provides you a wide using view, let you stream music and call directly from your Bluetooth devices to your car radio, charge your other device with 2.1A output. It will make your driving more interesting.

Packing contents:

Phone holder
Magnet holder
User manual

Features:

1. Adjustable clamps expand to securely fit for Smartphone
2. Streaming phone music and calls to car stereo via Bluetooth
3. Switch to Hands-free mode automatically from music playing status when receiving calls
4. Draws power from the cigarette socket (DC 12-24V);
5. The USB charging port for charging iPad, iPone and other devices with output 5V/2.1A
5. Elegant LED screen to display the numbers
6. Supports to play the music from TF card;
6. With Voice prompts;
7. 204 channels optional from 87.5-108.0 MHz
8. Bluetooth version: V2.1, Support A2DP, HFP

Specifications:

- Bluetooth Version: JL 2.1
- Bluetooth Protocol: HFP, A2DP
- Bluetooth ID: **T15A**

- Screen: 20*8*4mm; LED digital display
- Frequency range: 87.5-108.0 MHz
- Frequency stability: ± 10 ppm
- Product input: DC 12-24V
- Charger output: 5V/2.1A
- Music format: MP3, WMA
- TF card (Max capacity): 32GB
- Product dimension: 99*55*34 mm
- Product weight: 82.8g
- Product color: Black fuselage + Green silicon ring

Compatibility:

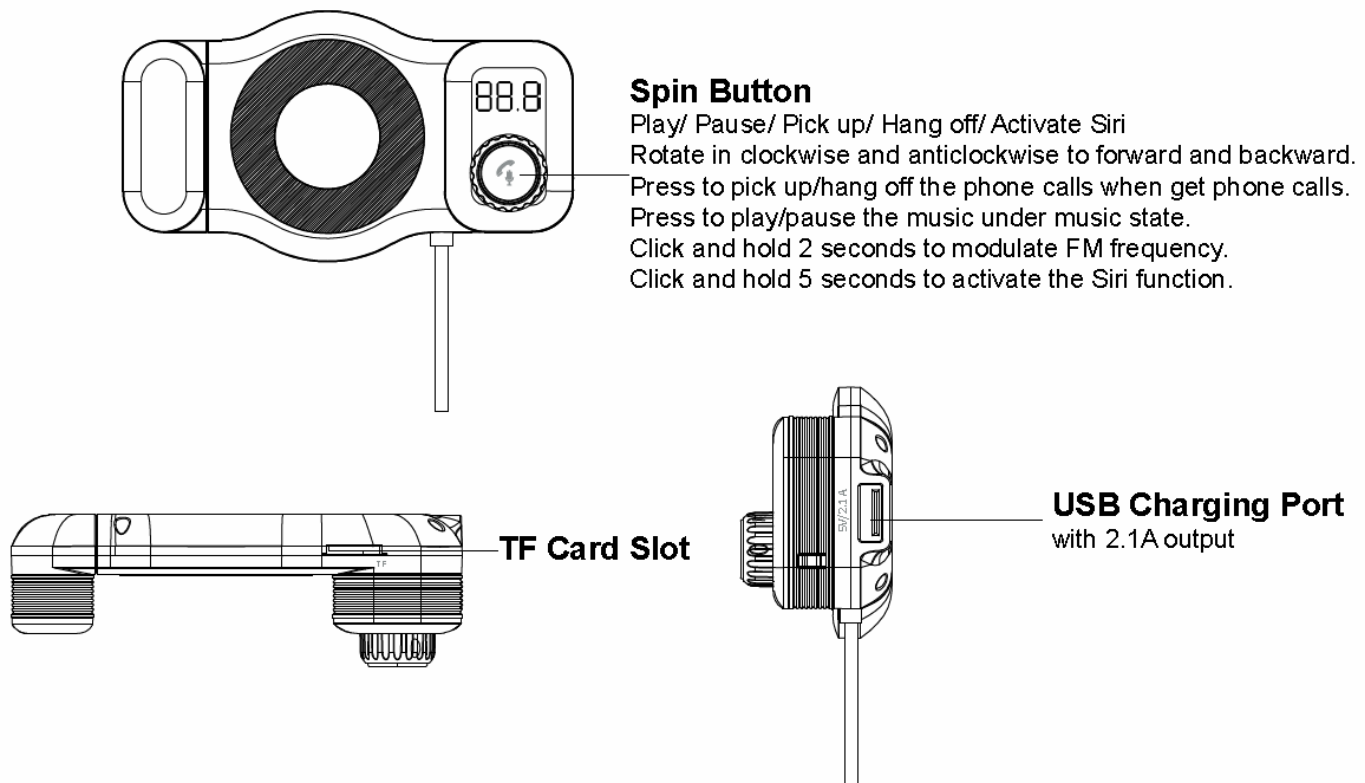
This device may be paired as a hands-free kit with any compatible Bluetooth enabled devices.

Precautions:

Please read all safety instruction wan warnings carefully before using this product. Improper use of this product may result in damage to this or attached products. To ensure the production works well, please never use this in the following conditions:

1. Moist or underwater conditions.
2. Conditions near heater or high temperature service.
3. Conditions with direct and strong sunshine.
4. Conditions with apt falling.
5. Never dismantle the product without due permission, otherwise it may nullify the warranty clause.

Appearance:



Operation Instructions:

Installation:

1. Plug the power adapter into the cigarette socket and check the best position for holder.
2. Place the magnetic mount on the dashboard and attract the phone holder in right position.
3. Stretch the left part of clamp, and fix the phone.

Using FM transmitter function:

1. Turn your car radio to an unoccupied FM frequency, click the spin button and hold 2 seconds until the LED screen flash the frequency, rotate the spin button to match the same frequency.
2. Insert the TF card which containing the MP3/WMA files into the card slot, it will play and transmit the MP3 files automatically.

Using the Bluetooth function:

1. Pair the Bluetooth for the first time, you need to activate your mobile phone's Bluetooth function, and then search the new device. When the mobile phone detects this unit (named as "T15A"), click this name to connect.
2. In the music playing mode, when there is an incoming call, this device will automatically switch to telephone mode. Press the spin button to answer/reject/redial the phone call.

Using the charging function:

When this device powered from car cigarette socket, connect the USB port to your mobile phone with a USB cable (not included), this unit will serve as mobile phone charger with 2.1A output.

Using the Siri function:

Long press the spin button and hold for 5 seconds, the Siri function will be activated automatically.

Pay attention: Only IOS system support this function.

FCC Statement:

Changes or modifications not expressly approved by the party responsible for compliance could void the user's authority to operate the equipment.

This equipment has been tested and found to comply with the limits for a Class B digital device, pursuant to Part 15 of the FCC Rules. These limits are designed to provide reasonable protection against harmful interference in a residential installation. This equipment generates uses and can radiate radio frequency energy and, if not installed and used in accordance with the

instructions, may cause harmful interference to radio communications. However, there is no guarantee that interference will not occur in a particular installation. If this equipment does cause harmful interference to radio or television reception, which can be determined by turning the equipment off and on, the user is encouraged to try to correct the interference by one or more of the following measures:

- Reorient or relocate the receiving antenna.
- Increase the separation between the equipment and receiver.
- Connect the equipment into an outlet on a circuit different from that to which the receiver is connected.
- Consult the dealer or an experienced radio/TV technician for help

This device complies with part 15 of the FCC rules. Operation is subject to the following two conditions (1) this device may not cause harmful interference, and (2) this device must accept any interference received, including interference that may cause undesired operation.