

F@ST 4320 US

User Manual

VER: 1.1

FCC Statement

This equipment has been tested and found to comply with the limits for a Class B digital device, pursuant to part 15 of the FCC rules. These limits are designed to provide reasonable protection against harmful interference in a residential installation. This equipment generates, uses and can radiate radio frequency energy and, if not installed and used in accordance with the instructions, may cause harmful interference to radio communications. However, there is no guarantee that interference will not occur in a particular installation. If this equipment does cause harmful interference to radio or television reception, which can be determined by turning the equipment off and on, the user is encouraged to try to correct the interference by one or more of the following measures:

- Reorient or relocate the receiving antenna.
 - Increase the separation between the equipment and receiver.
 - Connect the equipment into an outlet on a circuit different from that to which the receiver is connected.
 - Consult the dealer or an experienced radio/TV technician for help.
- To assure continued compliance, any changes or modifications not expressly approved by the party responsible for compliance could void the user's authority to operate this equipment. (Example- use only shielded interface cables when connecting to computer or peripheral devices).

FCC Radiation Exposure Statement

This device complies with FCC radiation exposure limits set forth for an uncontrolled environment and it also complies with Part 15 of the FCC RF Rules. This equipment must be installed and operated in accordance with provided instructions and the antenna(s) used for this transmitter must be installed to provide a separation distance of at least 20 cm from all persons and must not be co-located or operating in conjunction with any other antenna or transmitter. End-users and installers must be provided with antenna installation instructions and consider removing the no-collocation statement.

This equipment complies with Part 15 of the FCC Rules. Operation is subject to the following two conditions:

- (1) This device may not cause harmful interference, and
- (2) This device must accept any interference received, including interference that may cause undesired operation.

Caution!

The manufacturer is not responsible for any radio or TV interference caused by unauthorized changes or modifications to this equipment. Such changes or modifications could void the user authority to operate the equipment.

FCC - PART 68

This equipment complies with Part 68 of the FCC rules and the requirements adopted by the ACTA. On the bottom of this equipment is a label that contains, among other information, a product identifier in the format US: NS3DL01BFAST4320US. If requested, this number must be provided to the telephone company.

This equipment uses the following USOC jacks: RJ-11.

REN (RINGER EQUIVALENT NUMBERS) STATEMENT Notice:

The Ringer Equivalence Number (REN) assigned to each terminal device provides an indication of the maximum number of terminals allowed to be connected to a telephone interface. The termination on an interface may consist of any combination of devices subject only to the requirement that the sum of the Ringer Equivalence Numbers of all the devices does not exceed 5.

ATTACHMENT LIMITATIONS STATEMENT

Notice: This equipment meets telecommunications network protective, operational and safety requirements as prescribed in the appropriate Terminal Equipment Technical Requirements document(s). This is confirmed by marking the equipment with the Industry Canada certification number. The Department does not guarantee the equipment will operate to the user's satisfaction.

Before installing this equipment, users should ensure that it is permissible to be connected to the facilities of the local telecommunications company. The equipment must also be installed using an acceptable method of connection. The customer should be aware that compliance with the above conditions may not prevent degradation of service in some situations.

Repairs to certified equipment should be coordinated by a representative designated by the supplier. Any repairs or alterations made by the user to this equipment, or equipment malfunctions, may give the telecommunications company cause to request the user to disconnect the equipment.

Users should ensure for their own protection that the electrical ground

connections of the power utility, telephone lines and internal metallic water pipe system, if present, are connected together.

This precaution may be particularly important in rural areas. Caution: Users should not attempt to make such connections themselves, but should contact the appropriate electric inspection authority, or electrician, as appropriate.

IC Statement

This product meets the applicable Industry Canada technical specifications. / Le présent matériel est conforme aux spécifications techniques applicables d'Industrie Canada.

The Ringer Equivalence Number (REN) is an indication of the maximum number of devices allowed to be connected to a telephone interface. The termination of an interface may consist of any combination of devices subject only to the requirement that the sum of the RENs of all the devices not exceed five. / L'indice d'équivalence de la sonnerie (IES) sert à indiquer le nombre maximal de terminaux qui peuvent être raccordés à une interface téléphonique. La terminaison d'une interface peut consister en une combinaison quelconque de dispositifs, à la seule condition que la somme d'indices d'équivalence de la sonnerie de tous les dispositifs n'excède pas cinq.

Contents

1	Safety Precautions	1
2	Overview	2
2.1	Application	2
2.2	Features	3
2.3	Standards Compatibility and Compliance	4
3	Hardware Description and Installation	5
3.1	Hardware Description	5
3.1.1	Front Panel	5
3.1.2	Rear Panel and Side Panel	6
3.2	Hardware Installation	7
3.2.1	Choosing the Best Location for Wireless Operation	7
3.2.2	Connecting the Device	7
4	PC Network Configuration and Login	9
4.1	PC Network Configuration	9
4.2	Logging In to the DSL Router	11
5	Web-Based Management	12
5.1	Quick Setup	12
5.2	Advanced Setup	15
5.2.1	Layer2 Interface	15
5.2.2	WAN Service	19
5.2.3	3G WAN Service	27
5.3	Wireless	29
5.3.1	Basic Settings	29
5.3.2	Security	30
5.4	Management	32
5.4.1	Access Control	33
5.4.2	Update Software	33
6	Q&A	34

1 Safety Precautions

Read the following information carefully before operating the device. Please follow the following precaution items to protect the device from risks and damage caused by fire and electric power:

- Use volume labels to mark the type of power.
- Use the power adapter that is packed within the device package.
- Pay attention to the power load of the outlet or prolonged lines. An overburden power outlet or damaged lines and plugs may cause electric shock or fire accident. Check the power cords regularly. If you find any damage, replace it at once.
- Proper space left for heat dissipation is necessary to avoid any damage caused by overheating to the device. The holes on the device are designed for heat dissipation to ensure that the device works normally. Do not cover these heat dissipation holes.
- Do not put this device close to a place where a heat source exists or high temperature occurs. Avoid the device from direct sunshine.
- Do not put this device close to a place where is over damp or watery. Do not spill any fluid on this device.
- Do not connect this device to any PC or electronic product, unless our customer engineer or your broadband provider instructs you to do this, because any wrong connection may cause any power or fire risk.
- Do not place this device on an unstable surface or support.

2 Overview

The xDSL Router integrates wireless LAN and USB into one unit. It is designed to provide a simple and cost-effective xDSL Internet connection for a private Ethernet and 802.11b/802.11g/802.11n wireless network. The Router combines high-speed xDSL Internet connection, Ethernet uplink, IP routing for the LAN and wireless connectivity in one package. It is usually preferred to provide high access performance applications for the individual users, the SOHOs, and the small enterprises. The Router supports 3G WAN service.

The Router is easy to install and use. The Router connects to an Ethernet LAN or computers via standard Ethernet ports. The xDSL connection is made using ordinary telephone line with standard connectors. You can connect the Ethernet interface of WAN to Internet with Ethernet cable for ETH uplink. Multiple workstations can be networked and connected to the Internet by a single Wide Area Network (WAN) interface and single global IP address. The advanced security enhancements, packet filtering and port redirection, can help protect your network from potentially devastating intrusions by malicious agents from outside your network.

Network and Router management is done through the web-based management interface that can be accessed through the local Ethernet using any web browser. You may also enable remote management to enable configuration of the Router via the WAN interface.

2.1 Application

- Home gateway
- SOHOs
- Small enterprises
- Higher data rate broadband sharing
- Audio and video streaming and transfer
- PC file and application sharing
- Network and online gaming
- USB storage
- 3G WAN service

2.2 Features

- User-friendly GUI for web configuration
- Several pre-configured popular games. Just enable the game and the port settings are automatically configured.
- Compatible with all standard Internet applications
- Industry standard and interoperable DSL interface
- Simple web-based status page displays a snapshot of system configuration, and links to the configuration pages
- Downloadable flash software updates
- Support for up to 8 permanent virtual circuits (PVC)
- Support for up to 8 PPPoE sessions
- Support RIP v1 & RIP v2
- WLAN with high-speed data transfer rates, compatible with IEEE 802.11b/g/n
- Optimized Linux 2.6 Operating System
- IP routing and bridging
- Asynchronous transfer mode (ATM) and digital subscriber line (DSL) support
- Packet Transfer Mode (PTM)
- Ethernet (ETH) Transfer Mode
- Point-to-point protocol (PPP)
- Network/port address translation (NAT/PAT)
- Quality of service (QoS)
- Wireless LAN security: WPA, 802.1x, RADIUS client
- Universal plug-and-play(UPnP)
- File server for network attached storage (NAS) devices
- Print server
- Web filtering
- Management and control
 - Web-based management (WBM)
 - Command line interface (CLI)
 - TR-069 WAN management protocol
 - Simple Network Management Protocol (SNMP)
- Remote update
- System statistics and monitoring
- DSL router is targeted at the following platforms: DSL modems, wireless access points and bridge.

2.3 Standards Compatibility and Compliance

- Support application level gateway (ALG)
- ITU G.992.1 (G.dmt)
- ITU G.992.2 (G.lite)
- ITU G.994.1 (G.hs)
- ITU G.992.3 (ADSL2)
- ITU G.992.5 (ADSL2+)
- ITU G.993.1 (VDSL)
- ITU G.993.2 (VDSL2)
- 3G (WCDMA, CDMA2000, TD-SCDMA)
- ANSI T1.413 Issue 2
- IEEE 802.3
- IEEE 802.3u
- IEEE 802.11b
- IEEE 802.11g
- IEEE 802.11n

3 Hardware Description and Installation

Note:

The figures in this document are for reference only.

3.1 Hardware Description

3.1.1 Front Panel



Figure 1 Front panel

The following table describes the indicators on the front panel.

Indicator	Color	Status	Description
Power	Green	On	The device is powered on and the device operates normally.
		Blink	The software is upgrading.
		Off	The device is powered off.
	Red	On	The device is initiating.
		Blink	The software is upgrading.
WAN	Green	On	The WAN interface is connected to the Ethernet cable.
		Blink	Network data is transmitting.
		Off	The WAN interface is not connected to the Ethernet cable.
WPS	Green	On	Connection succeeds under Wi-Fi Protected Setup.
		Blink	Negotiation is in progress under W-iFi Protected Setup.
		Off	Wi-Fi Protected Setup is disabled.
DSL	Green	On	DSL link has established.

Indicator	Color	Status	Description
		Blink	The DSL line is training.
		Off	Device is powered off.
Internet	Green	On	Internet is synchronized successfully in the route mode.
		Blink	Internet data is being transmitted.
		Off	Ethernet interface is disconnected.
	Red	On	Authentication has failed.

3.1.2 Rear Panel and Side Panel

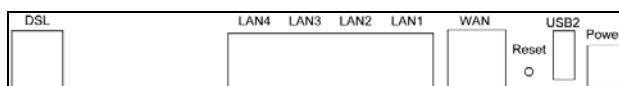


Figure 2 Rear panel

The following table describes the interfaces and the buttons.

Interface	Description
DSL	RJ-11 port. Connect the router to DSL connector or splitter through telephone cable.
LAN 4~1	RJ-45 port, for connecting the router to a PC or another network device.
WAN	For connecting Ethernet cable to provide Ethernet uplink.
Reset	Press the button for at least 1 second and then release it. System restores the factory default settings.

Interface	Description
USB1/2	USB port, for connecting the 3G network card or other USB storage devices.
Power	Power interface, for connecting the power adapter.
On/Off	Power switch.
WiFi	WiFi switch, for enabling or disabling the WiFi function.
WPS	This button is used for enabling WPS PBC mode. If WPS is enabled, press this button, and then the wireless router starts to accept the negotiation of PBC mode.

 **Warning:**

*Do not press the **Reset** button unless you want to clear the current settings. The **Reset** button is in a small circular hole on the rear panel. If you want to restore the default settings, please press the **Reset** button gently for 1 second with a fine needle inserted into the hole and then release the button. The system reboots and returns to the factory defaults.*

3.2 Hardware Installation

3.2.1 Choosing the Best Location for Wireless Operation

Many environmental factors may affect the effective wireless function of the DSL Router. If this is the first time that you set up a wireless network device, read the following information:

The access point can be placed on a shelf or desktop, ideally you should be able to see the LED indicators in the front, as you may need to view them for troubleshooting. Designed to go up to 100 meters indoors and up to 300 meters outdoors, wireless LAN lets you access your network from anywhere you want. However, the numbers of walls, ceilings, or other objects that the wireless signals must pass through limit signal range. Typical ranges vary depending on types of materials and background RF noise in your home or business.

3.2.2 Connecting the Device

- Step 1** Connect the **DSL** port of the router and the Modem port of the splitter with a telephone cable; connect the phone to the phone port of the

splitter through a cable; and connect the incoming line to the Line port of the splitter.

The splitter has three ports:

- **Line:** Connect to a wall phone jack (RJ-11 jack)
- **Modem:** Connect to the Line interface of the router
- **Phone:** Connect to a telephone set

Step 2 Connect the **LAN** port of the router to the network card of the PC through an Ethernet cable.

Step 3 Plug the power adapter to the wall outlet and then connect the other end of it to the **Power** port of the router.

The following figure displays the connection of the DSL router, PC, and telephones.

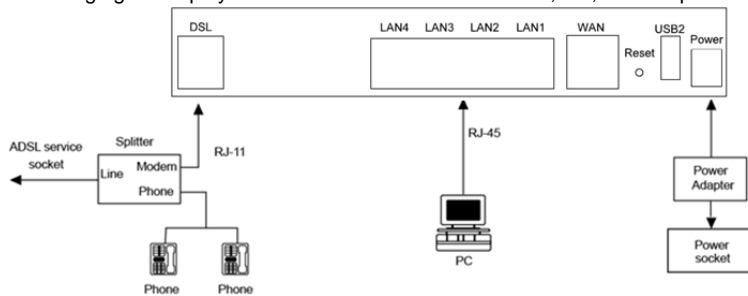


Figure 3 Connecting the DSL router

Note:

If you use 3G WAN service, connect the 3G USB data card to the **USB** port of the router.

If you use the Ethernet uplink, connect the WAN interface that is defined to the Internet with Ethernet cable.

The xDSL uplink, 3G WAN service, and Ethernet uplink can not coexist.

4 PC Network Configuration and Login

4.1 PC Network Configuration

Each network interface on the PC should either be configured with a statically defined IP address and DNS address, or be instructed to automatically obtain an IP address using the network DHCP server. DSL router provides a DHCP server on its LAN and it is recommended to configure your LAN to automatically obtain its IP address and DNS server IP address.

The configuration principle is identical but should be carried out differently on each operating system.

The following displays the **TCP/IP Properties** dialog box on Windows XP.

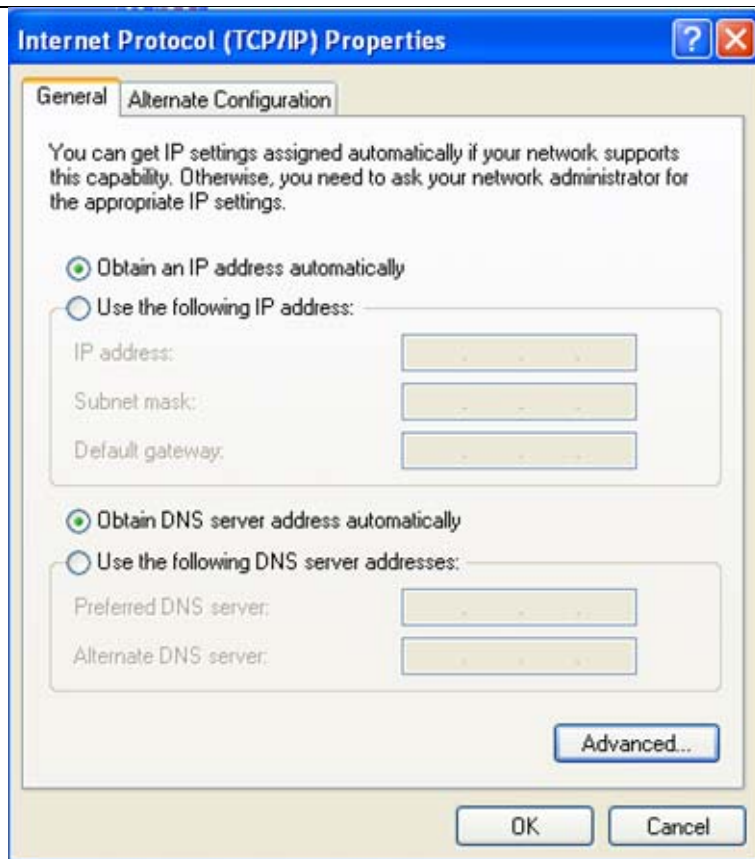


Figure 4 IP and DNS configuration

TCP/IP configuration steps for Windows XP are as follows:

- Step 1** Choose **Start > Control Panel > Network Connections**.
- Step 2** Right-click the Ethernet connection icon and choose **Properties**.
- Step 3** On the **General** tab, select the **Internet Protocol (TCP/IP)** component and click **Properties**.
- Step 4** The **Internet Protocol (TCP/IP) Properties** window appears.

- Step 5** Select the **Obtain an IP address automatically** radio button.
- Step 6** Select the **Obtain DNS server address automatically** radio button.
- Step 7** If you want to set the IP address and subnet mask manually, you can set the IP address and subnet mask of the computer to **192.168.1.x** and **255.255.255.0** respectively. The range for x is from 2 to 254.
- Step 8** Click **OK** to save the settings.

4.2 Logging In to the DSL Router

To log in to the DSL router, do as follows:

- Step 1** Open a Web browser on your computer.
- Step 2** Enter **http://192.168.1.1** (the default IP address of the DSL router) in the address bar. The login page appears.
- Step 3** Enter the user name and the password. The default username and password of the super user are **admin** and **admin**. The username and password of the common user are **user** and **user**. You need not enter the username and the password again if you select the option **Remember my password**. It is recommended to change these default values after logging in to the DSL router for the first time.
- Step 4** Click **OK** to log in to the Web page. Otherwise, please click **Cancel** to exit the login page.



Figure 5 Login page

After logging in to the DSL router as a super user, you can query, configure, and modify all the settings, and diagnose the system

5 Web-Based Management

This chapter describes how to use Web-based management of the DSL router, which allows you to configure and control all of DSL router features and system parameters in a user-friendly GUI.

5.1 Quick Setup

Choose **Quick Setup** and the following page is displayed.

Quick Setup

Automatic Configuration

ATM PVC Configuration

VPI: [0-255]
VCI: [32-65535]
Encapsulation Mode: LLC/SNAP-BRIDGING

WAN Service Configuration

Protocol:

PPP Configuration

PPP Username:
PPP Password:

Use Static IP Address

Wireless SSID

SSID:

- **VPI (Virtual Path Identifier):** The virtual path between two points in an ATM network, and its valid value is from 0 to 255.
- **VCI (Virtual Channel Identifier):** The virtual channel between two points in an ATM network, ranging from 32 to 65535 (1 to 31 are reserved for known protocols).
- **Encapsulation Mode:** You can select LLC/SNAP-BRIDGING, or VC/MUX
- **Protocol:** You can select the following items from the drop-down list: PPPoE, DHCP, PPPoA, IPoA, or Bridge.

- **PPP Username:** The correct user name provided by your ISP.
- **PPP Password:** The correct password provided by your ISP.
- **Use Static IP Address:** If this function is disabled, the modem obtains an IP address assigned by an uplink equipment such as BAS, through PPPoE dial-up. If this function is enabled, the modem uses this IP address as the WAN IP address.
- **SSID:** The service set identification (SSID) is a unique name to identify the router in the wireless LAN. Wireless stations associating to the router must have the same SSID. Enter a descriptive name that is used when the wireless client is connecting to the router.

Select **Automatic Configuration** to display the following page.

Quick Setup

Automatic Configuration

PPP Configuration

PPP Username:

PPP Password:

Wireless SSID

SSID:

Apply/Save

- **PPP Username:** The correct user name provided by your ISP.
- **PPP Password:** The correct password provided by your ISP.
- **SSID:** The service set identification (SSID) is a unique name to identify the router in the wireless LAN. Wireless stations associating to the router must have the same SSID. Enter a descriptive name that is used when the wireless client is connecting to the router.

After finishing setting, click **Apply/Save** to save the settings.

5.2 Advanced Setup

5.2.1 Layer2 Interface

5.2.1.1 ATM Interface

Choose **Advanced Setup > Layer2 Interface > ATM Interface** . In this page, you can add or remove to configure DSL ATM Interfaces.

DSL ATM Interface Configuration

Choose Add, or Remove to configure DSL ATM interfaces.

Interface	Vpi	Vci	DSL Latency	Category	Peak Cell Rate (cells/s)	Sustainable Cell Rate (cells/s)	Max Burst Size (bytes)	Link Type	Conn Mode	IP QoS	MPAAL Prec/Alg/Wght	Remove
atm0	8	35	Path0	UBR				EoA	VlanMuxMode	Support	8/WRR/1	<input type="checkbox"/>

Click **Add** to add ATM Interface and the following page appears.

ATM PVC Configuration

This screen allows you to configure a ATM PVC.

VPI: [0-255]

VCI: [32-65535]

Select DSL Latency

Path0 (Fast)

Path1 (Interleaved)

Select DSL Link Type (EoA is for PPPoE, IPoE, and Bridge.)

EoA

PPPoA

IPoA

Encapsulation Mode:

Service Category:

Select Scheduler for Queues of Equal Precedence as the Default Queue

Weighted Round Robin

Weighted Fair Queuing

Default Queue Weight: [1-63]

Default Queue Precedence: [1-8] (lower value, higher priority)

VC WRR Weight: [1-63]

VC Precedence: [1-8] (lower value, higher priority)

Note: VC scheduling will be SP among unequal precedence VC's and WRR among equal precedence VC's.

For single queue VC, the default queue precedence and weight will be used for arbitration.

For multi-queue VC, its VC precedence and weight will be used for arbitration.

In this page, you can enter this PVC (VPI and VCI) value, and select DSL link type (EoA is for PPPoE, IPoE, and Bridge.), encapsulation mode, service category.

- **VPI (Virtual Path Identifier):** The virtual path between two points in an ATM network, and its valid value is from 0 to 255.
- **VCI (Virtual Channel Identifier):** The virtual channel between two points in an ATM network, ranging from 32 to 65535 (1 to 31 are reserved for known protocols).
- **DSL Link Type:** EoA (it is for PPPoE, IPoE, and Bridge), PPPoA, or IPoA
- **Encapsulation Mode:** LLC/SNAP-BRIDGING, or VC/MUX.
- **Service Category:** UBR Without PCR, UBR With PCR, CBR, Non Realtime VBR, Realtime VBR.

- **Select Scheduler for Queues of Equal Precedence as the Default Queue:** Weighted Round Robin or Weighted Fair Queuing.

Click **Apply/Save** to save the configuration, and return the following page:

DSL ATM Interface Configuration

Choose Add, or Remove to configure DSL ATM interfaces.

Interface	Vpi	Vci	DSL Latency	Category	Peak Cell Rate (cells/s)	Sustainable Cell Rate (cells/s)	Max Burst Size (bytes)	Link Type	Conn Mode	IP QoS	MPAAL Prec/Alg/Wght	Remove
atm0	8	35	Path0	UBR				EoA	VlanMuxMode	Support	8/WRR/1	<input type="checkbox"/>
atm1	0	36	Path0	UBR				EoA	VlanMuxMode	Support	8/WRR/1	<input type="checkbox"/>

If you want to remove this Interface, please select the **Remove** check box and click **Remove**.

5.2.1.2 PTM Interface

Choose **Advanced Setup > Layer2 Interface > PTM Interface**, and the following page appears. In this page, you can add or remove to configure PTM WAN Interfaces.

DSL PTM Interface Configuration

Choose Add, or Remove to configure DSL PTM interfaces.

Interface	DSL Latency	PTM Priority	Conn Mode	IP QoS	Remove
-----------	-------------	--------------	-----------	--------	--------

Click **Add** and the following page appears.

PTM Configuration

This screen allows you to configure a PTM flow.

Select DSL Latency

- Path0 (Fast)
- Path1 (Interleaved)

Select Scheduler for Queues of Equal Precedence as the Default Queue

- Weighted Round Robin
- Weighted Fair Queuing

Default Queue Weight: [1-63]

Default Queue Precedence: [1-8] (lower value, higher priority)

Default Queue Shaping Rate: [Kbits/s] (blank indicates no shaping)

Default Queue Shaping Burst Size: [bytes] (shall be >=1600)

In this page, you can select scheduler for queues of equal precedence and enter the queue value. Click **Apply/Save** to save configuration.

5.2.1.3 ETH Interface

Choose **Advanced Setup > Layer2 Interface > ETH Interface**, and the following page appears. In this page, you can add or remove to configure ETH WAN Interfaces.

ETH WAN Interface Configuration

Choose **Add**, or **Remove** to configure ETH WAN interfaces.
Allow one ETH as layer 2 wan interface.

Interface/(Name)	Connection Mode	Remove
------------------	-----------------	--------

Click **Add** and the following page appears.

ETH WAN Configuration

This screen allows you to configure an ETH port .

Select an ETH port:

eth0/LAN2 ▼
Back
Apply/Save

In this page, you can select a ETH port. Click **Apply/Save** to save configuration.

Note:

If ETH Interface is selected, there are two WAN service types (PPPoE and IPoE).

5.2.2 WAN Service

Choose **Advanced Setup > WAN Service**, and the following page appears.

Wide Area Network (WAN) Service Setup

Choose Add, Remove or Edit to configure a WAN service over a selected interface.

Interface	Description	Type	Vlan8021p	VlanMuxId	Igmp	NAT	Firewall	IPv6	Mld	Remove	Edit
atm0.1	br_0_8_35	Bridge	N/A	N/A	Disabled	Disabled	Disabled	Disabled	Disabled	<input type="checkbox"/>	<input type="button" value="edit"/>

Add
Remove

In this page, you are allowed to add, remove, or edit a WAN service.

Note:

If PTM Interface is selected, there are three WAN service types: PPP over Ethernet (PPPoE), IP over Ethernet, Bridging. And the corresponding configurations of PTM WAN service are same as the configurations of ATM WAN service.

5.2.2.1 Adding a PPPoE WAN Service

This section describes the steps for adding the PPPoE WAN service.

Step1 In the **Wide Area Network (WAN) Service Setup** page, click the **Add** button to display the following page. (At first, you must add a proper ATM or PTM interface for this WAN service.)

WAN Service Interface Configuration

Select a layer 2 interface for this service

Note: For ATM interface, the descriptor string is (portId_vpi_vci)

For PTM interface, the descriptor string is (portId_high_low)

Where portId=0 --> DSL Latency PATH0

portId=1 --> DSL Latency PATH1

portId=4 --> DSL Latency PATH0&1

low =0 --> Low PTM Priority not set

low =1 --> Low PTM Priority set

high =0 --> High PTM Priority not set

high =1 --> High PTM Priority set

atm0/ (0_8_35) ▾

Back Next

Step2 In this page, you can select a ATM Interface for the WAN service. After selecting the ATM interface, click **Next** to display the following page.

WAN Service Configuration

Select WAN service type:

- PPP over Ethernet (PPPoE)
- IP over Ethernet
- Bridging

Enter Service Description:

For tagged service, enter valid 802.1P Priority and 802.1Q VLAN ID.
For untagged service, set -1 to both 802.1P Priority and 802.1Q VLAN ID.

Enter 802.1P Priority [0-7]:

Enter 802.1Q VLAN ID [0-4094]:

Network Protocol Selection: (IPv6 Only not support)



Step3 In this page, select the WAN service type to be **PPP over Ethernet (PPPoE)**. Click **Next** to display the following page.

PPP Username and Password

PPP usually requires that you have a user name and password to establish your connection. In the boxes below, enter the user name and password that your ISP has provided to you.

PPP Username:

PPP Password:

PPPoE Service Name:

Authentication Method:

MTU[576-1500]:

NAT Public Ip Address(0.0.0.0 mean auto):

Enable Fullcone NAT

Dial on demand (with idle timeout timer)

Manual connect

PPP IP extension

MAC Clone:

Use Static IPv4 Address

Enable PPP Debug Mode

Bridge PPPoE Frames Between WAN and Local Ports

Multicast Proxy

Enable IGMP Multicast Proxy

Step4 In this page, you can modify the PPP username, PPP password, PPPoE service name and authentication method.

- **PPP Username:** The correct user name provided by your ISP.
- **PPP Password:** The correct password provided by your ISP.
- **PPPoE Service Name:** If your ISP provides it to you, please enter it. If not, do not enter any information.
- **Authentication Method:** The value can be AUTO, PAP, CHAP, or MSCHAP. Usually, you can select AUTO.
- **Enable Fullcone NAT:** NAT is one where all requests from the same internal IP address and port are mapped to the same external IP address and port. Furthermore, any external host can send a packet to the internal host, by sending a packet to the mapped external address.
- **Dial on demand (with idle timeout timer):** If this function is enabled, you need to enter the idle timeout time. Within the preset minutes, if the modem does not detect the flow of the user continuously, the modem automatically stops the PPPoE connection. Once it detects the flow (like access to a webpage), the modem restarts the PPPoE dialup. If this function is disabled, the modem performs PPPoE dial-up all the time. The PPPoE connection

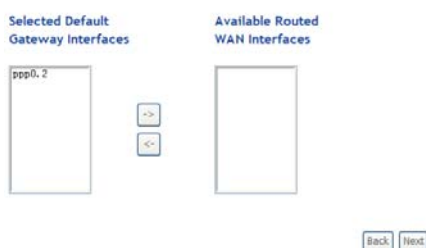
does not stop, unless the modem is powered off and DSLAM or uplink equipment is abnormal.

- **PPP IP extension:** If you want to configure DMZ Host, you should enable it first.
- **Use Static IPv4 Address:** If this function is disabled, the modem obtains an IP address assigned by an uplink equipment such as BAS, through PPPoE dial-up. If this function is enabled, the modem uses this IP address as the WAN IP address.
- **Enable PPP Debug Mode:** Enable or disable this function.
- **Bridge PPPoE Frames Between WAN and Local Ports:** Enable or disable this function.
- **Enable IGMP Multicast Proxy:** If you want PPPoE mode to support IPTV, enable it.

Step5 After setting the parameters, click **Next** to display the following page.

[Routing -- Default Gateway](#)

Default gateway interface list can have multiple WAN interfaces served as system default gateways but only one will be used according to the priority with the first being the highest and the last one the lowest priority if the WAN interface is connected. Priority order can be changed by removing all and adding them back in again.



Step6 In this page, select a preferred WAN interface as the system default gateway and then click **Next** to display the following page.

DNS Server Configuration

Select DNS Server Interface from available WAN interfaces OR enter static DNS server IP addresses for the system. In ATM mode, if only a single PVC with IPoA or static IPoE protocol is configured, Static DNS server IP addresses must be entered.

DNS Server Interfaces can have multiple WAN interfaces served as system dns servers but only one will be used according to the priority with the first being the highest and the last one the lowest priority if the WAN interface is connected. Priority order can be changed by removing all and adding them back in again.

Select DNS Server Interface from available WAN interfaces:

Selected DNS Server Interfaces	Available WAN Interfaces
ppp0.2	

Back Next

Step7 In this page, you can obtain the DNS server addresses from the selected WAN interface. Click **Next**, and the following page appears.

WAN Setup - Summary

Make sure that the settings below match the settings provided by your ISP.

Connection Type:	PPPoE
NAT:	Enabled
Full Cone NAT:	Disabled
Firewall:	Enabled
IGMP Multicast:	Disabled
Quality Of Service:	Enabled

Click "Apply/Save" to have this interface to be effective. Click "Back" to make any modifications.

Back Apply/Save

Step8 In this page, it displays the information about the PPPoE settings. Click **Apply/Save** to save and apply the settings.

5.2.2.2 Adding a Bridge WAN service

This section describes the steps for adding the Bridge WAN service.

Step1 In the **Wide Area Network (WAN) Service Setup** page, click the **Add** button to display the following page. (At first, you must add a proper ATM

or PTM interface for this WAN service.) Click the **Add** button to display the following page.

WAN Service Interface Configuration

Select a layer 2 interface for this service

Note: For ATM interface, the descriptor string is (portId_vpi_vci)

For PTM interface, the descriptor string is (portId_high_low)

Where portId=0 --> DSL Latency PATH0

portId=1 --> DSL Latency PATH1

portId=4 --> DSL Latency PATH0&1

low =0 --> Low PTM Priority not set

low =1 --> Low PTM Priority set

high =0 --> High PTM Priority not set

high =1 --> High PTM Priority set

atm2/ (0_0_37) ▾

Step2 Select the proper ATM Interface and then click **Next** to display the following page.

WAN Service Configuration

Select WAN service type:

- PPP over Ethernet (PPPoE)
- IP over Ethernet
- Bridging

Enter Service Description:

For tagged service, enter valid 802.1P Priority and 802.1Q VLAN ID.
For untagged service, set -1 to both 802.1P Priority and 802.1Q VLAN ID.

Enter 802.1P Priority [0-7]:
Enter 802.1Q VLAN ID [0-4094]:

Step3 In this page, you can select the WAN service type, and modify the service description for this service. After finishing setting, click **Next** to display the following page.

WAN Setup - Summary

Make sure that the settings below match the settings provided by your ISP.

Connection Type:	Bridge
NAT:	Disabled
Full Cone NAT:	Disabled
Firewall:	Disabled
IGMP Multicast:	Not Applicable
Quality Of Service:	Enabled

Click "Apply/Save" to have this interface to be effective. Click "Back" to make any modifications.

Step4 In this page, it displays the information about the bridge settings. Click **Apply/Save** to save and apply the settings. You can modify the settings by clicking the **Back** button if necessary.

5.2.3 3G WAN Service

Choose **Advanced Setup > 3G Wan Service** , and the following page appears.

[modem status](#)

Wide Area Network (WAN) Service For 3G Mobile Setup
Choose Add, Remove or Edit to configure a WAN service For 3G Mobile interface.

Interface	Description	Type	Vlan8021p	VlanMuxId	Igmp	NAT	Firewall	IPv6	Mid	Remove	Edit	Action
-----------	-------------	------	-----------	-----------	------	-----	----------	------	-----	--------	------	--------

This page is used to configure 3G connection. If you want to access the Internet through 3G connection, a 3G network card is required. Connect the 3G network card to the USB interface of the Router.

- **Information:** Click it to display the information of the 3G network card.
- **Upload Driver:** For a un-support USB dongle, click it to upload the new driver for supporting the USB. The driver is a text file.

Click **Add** in the **WAN Service for 3G Mobile Setup** to display the following page.

Enable USB Modem

User Name:

Password:

Authentication Method:

APN:

Dial Number:

Idle time(in sec.):

Dial on demand

Dial Delay(in sec.):

Default WAN Connection Select:

WAN backup mechanism: DSL IP connectivity

In this page, you are allowed to configure the settings of the 3G USB modem.

- **Enable USB Modem:** If you want to access the Internet through the 3G network card, you must enable the USB modem.
- **User Name:** Username provided by your 3G ISP.
- **Password:** Password provided by your 3G ISP.
- **Authentication Method:** Select a proper authentication method in the drop-down list. You can select Auto, PAP, CHAP, or MSCHAP.
- **APN:** APN (Access Point Name) is used to identify the service type. Enter the APN provided by your 3G ISP.
- **Dial Number:** Enter the dial number provided by your 3G ISP.
- **Idle time (in sec.):** If no traffic for the preset time, the 3G will disconnect automatically.
- **Dial Delay (in sec.):** The 3G delays dial after the DSL is disconnected.
- **Default WAN Connection Select:** You can select DSL or ETHERNET or 3G from the drop-down list.
- **WAN back mechanism:** The 3G connection is backup for the DSL connection.

- **- DSL:** If the DSL is disconnected, the 3G starts to dial.
- **- IP connectivity:** If the system fails to ping the specified IP address, the 3G starts to dial.

After finishing setting, click the **Apply/Save** button to save the settings.

You may also click the **Auto Setting** button to automatically configure the 3G connection.

5.3 Wireless

Choose **Wireless** and the submenus of **Wireless** are shown as below:

5.3.1 Basic Settings

Choose **Wireless > Basic** to display the following page. In this page, the figure in the right area is 2-dimensional code. It includes the wireless SSID and password. You can obtain the wireless SSID and password through scanning this figure.

Wireless -- Basic

This page allows you to configure basic features of the wireless LAN interface. You can enable or disable the wireless LAN interface, hide the network from active scans, set the wireless network name (also known as SSID) and restrict the channel set based on country requirements. Click 'Apply/Save' to configure the basic wireless optio

Enable Wireless

Hide Access Point

Clients Isolation

Disable WMM Advertise

Enable Wireless Multicast Forwarding (WMF)

SSID:

BSSID:

Country:

Max Clients:



Wireless - Guest/Virtual Access Points:

Enabled	SSID	Hidden	Isolate Clients	Enable WMM Advertise	Enable WMF	Max Clients	BSSID
<input type="checkbox"/>	<input type="text" value="WLAN_Guest1"/>	<input type="checkbox"/>	<input type="checkbox"/>	<input type="checkbox"/>	<input type="checkbox"/>	<input type="text" value="16"/>	N/A
<input type="checkbox"/>	<input type="text" value="WLAN_Guest2"/>	<input type="checkbox"/>	<input type="checkbox"/>	<input type="checkbox"/>	<input type="checkbox"/>	<input type="text" value="16"/>	N/A
<input type="checkbox"/>	<input type="text" value="WLAN_Guest3"/>	<input type="checkbox"/>	<input type="checkbox"/>	<input type="checkbox"/>	<input type="checkbox"/>	<input type="text" value="16"/>	N/A

This page allows you to configure the basic features of the wireless LAN interface.

- **Enable Wireless:** Enable or disable the wireless function.
- **Hide Access Point:** if you want to hide any access point for your router, select this option, and then a station cannot obtain the SSID through the passive scanning.
- **Clients Isolation:** When many clients connect to the same access point, they can access each other. If you want to disable the access between the clients that connect to the same access point, you can select this option.
- **Disable WMM Advertise:** After enabling this option, the transmission performance multimedia of the voice and video data can be improved.
- **Enable Wireless Multicast Forwarding (WMF):** After enabling this option, the transmission quality of video service such as IPTV can be improved.
- **SSID:** For the security reason, you should change the default SSID to a unique name.
- **BSSID:** Display the MAC address of the wireless interface.
- **Country:** The name of the country with which your gateway is configured. This parameter further specifies your wireless connection. For example, the channel will adjust according to nations to adapt to each nation's frequency provision.
- **Max Clients:** Specify the maximum wireless client stations to be enabled to link with AP. Once the clients exceed the max vlaue, all other clients are refused. The value of maximum clients is 16.
- **Wireless - Guest/Virtual Access Points:** If you want to make Guest/Virtual network function be available, you have to check those boxes in the table below. In the current software version, three virtual access points can be configured.

After finishing setting, click **Apply/Save** to save the basic wireless settings and make the settings take effect.

5.3.2 Security

Choose **Wireless > Security** to display the following page.

Wireless -- Security

This page allows you to configure security features of the wireless LAN interface.
You may setup configuration manually

OR
through WiFi Protected Setup(WPS)

Note: When both STA PIN and Authorized MAC are empty, PBC is used. If Hide Access Point enabled or Mac filter list is empty with "allow" chosen, WPS2 will be disabled

WPS Setup

Enable WPS

Add Client (This feature is available only when WPA-PSK(WPS1), WPA2 PSK or OPEN mode is configured)

Push-Button
 Enter STA PIN Use AP PIN

Set WPS AP Mode

Setup AP (Configure all security settings with an external registrar)

Device PIN [Help](#)

Manual Setup AP

You can set the network authentication method, selecting data encryption, specify whether a network key is required to authenticate to this wireless network and specify the encryption strength. Click 'Apply/Save' when done.

Select SSID:

Network Authentication:

WEP Encryption:

This page allows you to configure the security features of the wireless LAN interface. In this page, you can configure the network security settings by the Wi-Fi Protected Setup (WPS) method or setting the network authentication mode.

- **WPS Setup**

Wireless -- Security

This page allows you to configure security features of the wireless LAN interface. You may setup configuration manually

OR
through WiFi Protected Setup(WPS)

Note: When both STA PIN and Authorized MAC are empty, PBC is used. If Hide Access Point enabled or Mac filter list is empty with "allow" chosen, WPS2 will be disabled

WPS Setup

Enable WPS

Add Client (This feature is available only when WPA-PSK(WPS1), WPA2 PSK or OPEN mode is configured)

Push-Button
 Enter STA PIN Use AP PIN

Set WPS AP Mode

Setup AP (Configure all security settings with an external registrar)

Device PIN [Help](#)

There are 2 primary methods used in the Wi-Fi Protected Setup:

- PIN entry, a mandatory method of setup for all WPS certified devices.
 - **Enter STA PIN:** If you select it, you need to enter the station PIN from client.
 - **Use AP PIN:** The PIN is generated by AP.
- Push button configuration (PBC), an actual push button on the hardware or through a simulated push button in the software. (This is an optional method on wireless client).

If you are using the PIN method, you will need a Registrar (access point/wireless router) to initiate the registration between a new device and an active access point/wireless router. (**Note:** *The PBC method may also need a Registrar when used in a special case where the PIN is all zeros*)

In order to use the push-button for WPS authentication, you must ensure that the network card support the function. if it supports, you need not to do any configuration. You can press the WPS button directly to enable the WPS function.

5.4 Management

5.4.1 Access Control

Passwords

Choose **Management > Access Control > Passwords**, and the following page appears.

Access Control -- Passwords

Access to your DSL router is controlled through three user accounts:admin,support and user .

The user name "admin" has unrestricted access to change and view configuration of your DSL Router.

The user name "support" is used to allow an ISP technician to access your DSL Router for maintenance and to run diagnostics.

The user name "user" can access the DSL Router, view configuration settings and statistics, as well as, update the router's software.

Use the fields below to enter up to 15 characters and click 'Apply/Save' to change or create passwords. Note: Password cannot contain a space.

Username:

New Username:

Old Password:

New Password:

Confirm Password:

In the page, you can modify the username and password of different users. After finishing setting, click the **Apply/Save** button to save and apply the settings.

5.4.2 Update Software

Choose **Management > Update Software**, and the following page appears.

Tools -- Update Software

Step 1: Obtain an updated software image file from your ISP.

Step 2: Enter the path to the image file location in the box below or click the 'Browse' button to locate the image file.

Step 3: Click the 'Update Software' button once to upload the new image file.

NOTE: The update process takes about 2 minutes to complete, and your Broadband Router will reboot.

Software File Name:

If you want to upload the software, click the **Browse...** button to choose the new software, and then click the **Update Software** button.

Note:

When software update is in progress, do not shut down the router. After software update completes, the router automatically reboots.

Please make sure that the new software for updating is correct, and do not use other software to update the router.

6 Q&A

- (1) **Q:** Why all the indicators are off?
A: Check the following:
 - The connection between the power adaptor and the power socket.
 - The status of the power switch.
- (2) **Q:** Why the **LAN** indicator is off?
A: Check the following:
 - The connection between the ADSL router and your computer, hub, or switch.
 - The running status of your PC, hub, or switch.
- (3) **Q:** Why the **DSL** indicator is off?
A: Check the connection between the "DSL" port of router and the wall jack.
- (4) **Q:** Why Internet access fails while the **DSL** indicator is on?
A: Check whether the VPI, VCI, user name, and password are correctly entered.
- (5) **Q:** Why I fail to access the web configuration page of the DSL router?
A: Choose **Start > Run** from the desktop, and ping **192.168.1.1** (IP address of the DSL router). If the DSL router is not reachable, check the type of the network cable, the connection between the DSL router and the PC, and the TCP/IP configuration of the PC.
- (6) **Q:** How to load the default settings after incorrect configuration?
A: To restore the factory default settings, turn on the device, and press the reset button for at least 1 second, and then release it. The default IP address and the subnet mask of the DSL router are **192.168.1.1** and **255.255.255.0**, respectively.
 - User/password of super user: **admin/admin**
 - User/password of common user: **user/user**