

1D Barcode Scanner

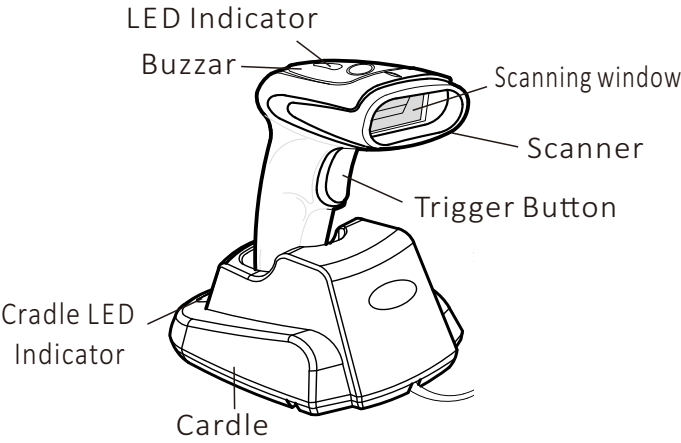
Quick Start Guide



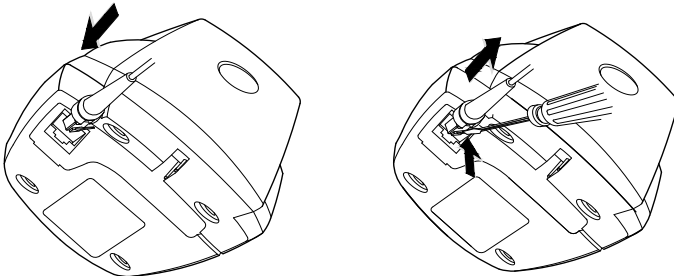
- Contents:● Barcode Scanner ●Cradle
- Quick Start Guide
 - USB / RS232 Cable
 - Power Adapter (Rs232 only)

No.:1230105001 v2.0

1 Scanner overview



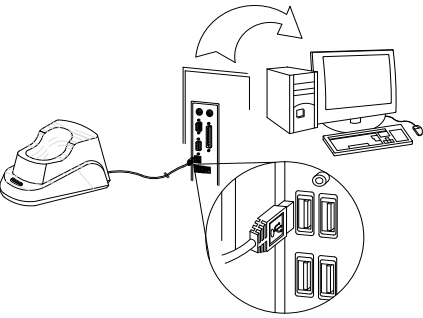
2 Cable plug&Unplug



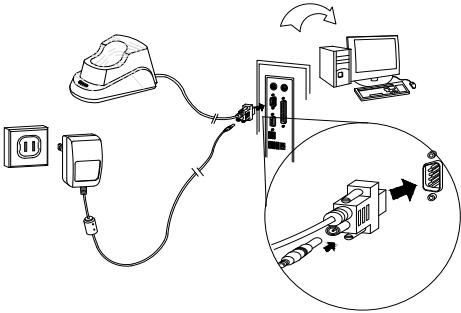
- ① Plug as picture above ② Press the buckle click, then pull out the cable

3 Cable connection guide

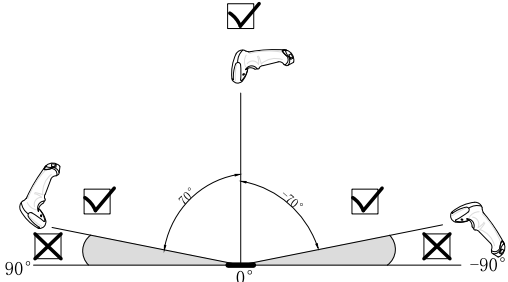
(1) USB Data cable



(2) RS232 Data cable

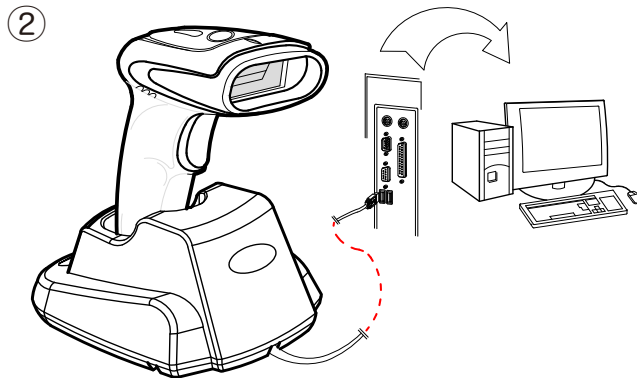
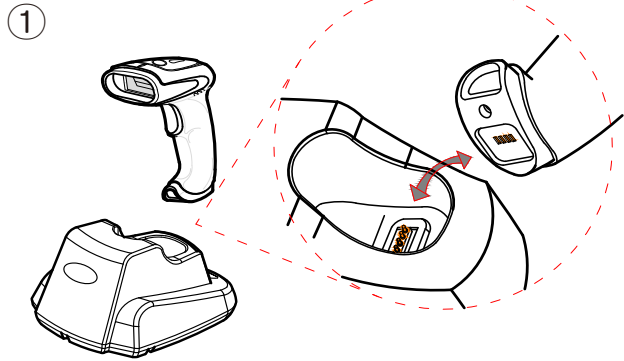


4 Scanning method and distance



NOTE: LED beam should be full covered on the bar code

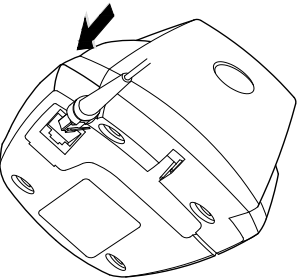
5 Charging method



Pairing Guide

Method

First step: Insert the cradle as above picture. the green light of the cradle will continue (on not able to pair when green light flashing.)
Second step: After insert the cradle , it must be scan the below bar code within 20s



Pair in one step

Transmitter(Scanner)

Working mode:

Following working mode can be set directly.



*Real-time mode



Inventory mode



Cache mode

Note:

Real time mode: Scan and transmit data will automatically lost if upload failed.

Cache mode: Same as real time mode if connection normal. Scan bar codes will be automatically restore if connection failed. Will upload one by one if connection return as normal.

Inventory Mode: Scanning bar codes will be restored without upload.

Will upload once scan "Upload data" barcode.

Will clear once scan "Clear data".

Will check sum once scan "Data sum".

Inventory mode setting

Following working mode can be set directly.



Upload data



Data sum



Clear Data

Upload data: Bar code data will transmit to terminal once scan this bar code.

Date sum: Scan "Data sum" bar code to check the scanner restore data sum.

Clear data: Scan "Clear data" and clear all the restore data in scanner

Wierless Settings

This part is valid for wireless settings only

①Defaults Parameter

The default setting allows the scanner to be restored to the factory setting state.

Set up process:

- ① Scan the bar code of“Enter Setting”.



Enter Setting

- ② Scan the bar code of “Restore Defaults”.



Restore Defaults

- ③ Scan the bar code of "Exit and Save".



Exit and Save

②Numeric Keypad

Configuration method: Scan the function bar code directly.



Enable Numeric Keypad



*Disable Numeric Keypad

③ Suffix

Set up process:

- ① Scan the bar code of“Enter Setting”.



Enter Setting

- ② Scan the bar code of "Custom Suffix".



Custom Suffix

- ③ Scan one of bar code below as suffix



None



*0x0D (CR)



0x0A (LF)



TAB

- ④ Scan the bar code of “Exit and Save”.



Exit and Save

④Sleep Time Setting

The sleep time means the time between the last operation move and auto turn off the scanner. User able to scan the corresponding bar code of the sleep time which is needed to accomplish the sleep time setting.

Set up process:

- ① Scan the bar code of“Sleep Time”.



Sleep Time

- ② Scan one of the bar code below as sleep time.



60s



20S



5min



3min



30min



15min



None sleep

- ③ Scan the bar code of “Exit and Save”.



Exit and Save

Light

LED Status

Scanner

	Description
Green light on	Power on/ Working normally
Red light blinks	Pairing match
Green light blinks once	Upload successfully
Green light blinks twice	Upload failed
Red light on	Low battery
Blue light on	Charging normal
Green light on	Charging complete
Green light blinking	Pairing unsuccessful

Cradle

Green light blinks 30s	Pairing state
Red light on	USB identify failed
Green light blinks once	Uploaded successfully
Green light on	Working normally

Decode Settings

This part is valid for decode settings only

Setting Step

1

Scan the bar code of “Enter setting”



Enter Setting



2

Scan the function bar codes



3

Scan the bar code of “Exit and Save”



Exit and Save

① Trigger Mode

Single decode: When a bar code has been decoded, the reader will be turned off. The reader must be triggered again to read another label.

Continuous decode: The reader will produce as much data as it can decode regardless whether it is the same or not. This mode is mainly used for demonstration and diagnosis.



*Single Read



Continuous Read

② Reading Mode



Disable repeat read (F0100)



*Enable repeat read (F0101)



Multiple read (F0102)

Multiple read: The same label can only be decoded again after the label has not been detected for a number of scans. This mode can only be programmed in Continuous read trigger mode.

③ Dalay for repeating to read the same barcode



500ms (F0205)



1000ms (F0210)



2000ms (F0220)

④ Auto trigger (optional)



Disable auto trigger (H0000)



* Enable auto trigger (H0001)

FCC STATEMENT :

This device complies with Part 15 of the FCC Rules. Operation is subject to the following two conditions:
(1) This device may not cause harmful interference, and
(2) This device must accept any interference received, including interference that may cause undesired operation.

Warning: Changes or modifications not expressly approved by the party responsible for compliance could void the user's authority to operate the equipment.

NOTE: This equipment has been tested and found to comply with the limits for a Class B digital device, pursuant to Part 15 of the FCC Rules. These limits are designed to provide reasonable protection against harmful interference in a residential installation. This equipment generates uses and can radiate radio frequency energy and, if not installed and used in accordance with the instructions, may cause harmful interference to radio communications. However, there is no guarantee that interference will not occur in a particular installation. If this equipment does cause harmful interference to radio or television reception, which can be determined by turning the equipment off and on, the user is encouraged to try to correct the interference by one or more of the following measures:
Reorient or relocate the receiving antenna.
Increase the separation between the equipment and receiver.
Connect the equipment into an outlet on a circuit different from that to which the receiver is connected.
Consult the dealer or an experienced radio/TV technician for help.