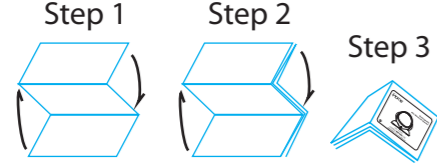


XX-B44 IB (English)
Size: 214mm x 756mm
Printing color: Black, 1C + 1C
Dec 29, 2015
100gsm2 WF (書紙)



Limited 90-Day Warranty Information

eKids, LLC, warrants this product to be free from defects in workmanship and materials, under normal use and conditions, for a period of 90 days from the date of original purchase.

Should this product fail to function in a satisfactory manner, it is best to first return it to the store where it was originally purchased. Should this fail to resolve the matter and service still be required by reason of any defect or malfunction during the warranty period, eKids will repair or, at its discretion, replace this product without charge. This decision is subject to verification of the defect or malfunction upon delivery of this product to the Factory Service Center authorized by Customer Service.

If service is required, please call Customer Service at 1-888-TOP-TOYS to obtain a Return Authorization Number and shipping instructions.

Disclaimer of Warranty

NOTE: This warranty is valid only if the product is used for the purpose for which it was designed. It does not cover (i) products which have been damaged by negligence or willful actions, misuse or accident, or which have been modified or repaired by unauthorized persons; (ii) cracked or broken cabinets, or units damaged by excessive heat; (iii) damage to digital media players, CDs or tape cassettes (if applicable); (iv) the cost of shipping this product to the Factory Service Center and its return to the owner.

This warranty is valid only in the United States of America and does not extend to owners of the product other than to the original purchaser. In no event will eKids or any of its affiliates, contractors, resellers, their officers, directors, shareholders, members or agents be liable to you or any third party for any consequential or incidental damages, any lost profits, actual, exemplary or punitive damages. (Some states do not allow limitations on implied warranties or exclusion of consequential damages, so these restrictions may not apply to you.) This warranty gives you specific legal rights, and you may also have other rights which vary from state to state.

Your acknowledgement and agreement to fully and completely abide by the above mentioned disclaimer of warranty is contractually binding to you upon your transfer of currency (money order, cashier's check, or credit card) for purchase of your eKids product.

Questions? Visit www.ekids.com

For any other questions: 1-888-TOP-TOYS Toll Free

B44-151229A

Printed in China

Consumer Product Safety Guide: IMPORTANT SAFETY INSTRUCTIONS

When used in the directed manner, this unit has been designed and manufactured to ensure your personal safety. However, improper use can result in potential electrical shock or fire hazards. Please read all safety and operating instructions carefully before installation and use, and keep these instructions handy for future reference. Take special note of all warnings listed in these instructions and on the unit.

- Water and Moisture** – DO NOT use near water. Keep away from wash basins, showers, sinks, etc.
- Ventilation** – The unit should be situated so that its location or position does not interfere with its proper ventilation. For example, it should not be situated on a bed, sofa, rug or similar surface that may block ventilation openings.
- Heat** – The unit should be situated away from heat sources such as radiators, heat registers, stoves or other appliances (including amplifiers) that produce heat.
- Power Sources** – The unit should be connected to a power supply only of the type described in the operating instructions or as marked on the appliance.
- Cleaning** – The unit should be cleaned only using a warm damp cloth. Do not use solvents, etc.
- Objects and Liquid Entry** – Care should be taken so that objects do not fall and liquids are not spilled into any openings or vents located on the product.
- Attachments** – Do not use attachments not recommended by the product manufacturer.
- Lightning and Power Surge Protection** – Unplug the unit from the wall socket and disconnect the antenna or cable system during a lightning storm or when it is left unattended and unused for long periods of time. This will prevent damage to the product due to lightning and power-line surges.
- Overloading** – Do not overload wall sockets, extension cords, or integral convenience receptacles as this can result in a risk of fire or electric shock.
- Damage Requiring Service** – The unit should be serviced by qualified service personnel when:
 - the power supply cable or plug has been damaged.
 - objects have fallen into or liquid has been spilled into the enclosure.
 - the unit has been exposed to rain.
 - the unit has been dropped or the enclosure damaged.
 - the unit exhibits a marked change in performance or does not operate normally.
- Periods of Nonuse** – If the unit is to be left unused for an extended period of time, such as a month or longer, fully charge the unit before storing.
- Servicing** – The user should not attempt to service the unit beyond those methods described in the user's operating instructions. Service methods not covered in the operating instructions should be referred to qualified service personnel.

Internal Rechargeable Lithium-ion Battery

This device uses an internal rechargeable lithium-ion battery that should last the lifetime of the device. If you suspect your battery may be dead, try charging it several times. If the battery does not recharge, please contact Customer Service at 1-800-288-2792.

WARNING/DISPOSAL OF UNIT

- Please do NOT attempt to charge the battery yourself. Doing so may damage the unit and void your warranty.
- Never dispose of used batteries/electronics with ordinary solid wastes, since they contain toxic substances.
 - Always dispose of used batteries/electronics in accordance with the prevailing community regulations that apply to the disposal of batteries/electronics. If there are no local regulations concerning battery/electronics disposal, please dispose of the device in a waste bin for electronic devices.
 - Many electronics retailers now recycle batteries and other electronic components at no charge. Check to see which ones in your area do so.

CAUTION

The battery used in this device may present a risk of fire, explosion or chemical burn if mistreated

- Never use or charge the battery if it appears to be leaking, discolored, deformed, or in any way abnormal.
- Never disassemble the unit or attempt to remove battery as that could cause leakage of alkaline solution or other electrolytic substance.
- Always confirm that the temperature is 5°C – 35°C [41° - 95° Fahrenheit] before you charge the battery. Leakage or deterioration of the battery may occur if this warning is not heeded.
- Never expose the battery to any liquid.
- Never expose the battery to excessive heat such as direct sunlight or fire. Never use the battery pack in an unventilated vehicle where excessive internal temperatures may be encountered.
- Always keep the battery out of the reach of infants and small children.



Model No:
AB-B44/HY-B44/TU-B44ME/TU-B44MY
**Rechargeable
Mini Bluetooth Speaker**



**CHARGE
BEFORE
USE**

instruction manual
QUESTIONS? Visit www.ekids.com



Dec 30, 2015

FCC Information

FCC Radiation Exposure Statement

This equipment complies with FCC RF radiation exposure limits set forth for an uncontrolled environment.

This device complies with Part 15 of the FCC Rules, operation is subject to the following two conditions: (1) This device may not cause harmful interference, and (2) this device must accept any interference received, including interference that may cause undesired operation.

- Warning: Changes or modifications to this unit not expressly approved by the party responsible for compliance could void the user's authority to operate the equipment.
- NOTE: This equipment has been tested and found to comply with the limits for a Class B digital device, pursuant to Part 15 of the FCC Rules.

These limits are designed to provide reasonable protection against harmful interference in a residential installation. This equipment generates, uses and can radiate radio frequency energy and, if not installed and used in accordance with the instructions, may cause harmful interference to radio communications.

However, there is no guarantee that interference will not occur in a particular installation. If this equipment does cause harmful interference to radio or television reception, which can be determined by turning the equipment off and on, the user is encouraged to try to correct the interference by one or more of the following measures:

- Reorient or relocate the receiving antenna.
- Increase the separation between the equipment and receiver.
- Connect the equipment into an outlet on a circuit different from that to which the receiver is connected.
- Consult the dealer or an experienced radio/TV technician for help.

CAN ICES-3 (B)/NMB-3(B)

IC Statement

This device complies with Industry Canada's licence-exempt RSSs. Operation is subject to the following two conditions:

- This device may not cause interference; and
- This device must accept any interference, including interference that may cause undesired operation of the device.

Le présent appareil est conforme aux CNR d'Industrie Canada applicables aux appareils radio exempts de licence. L'exploitation est autorisée aux deux conditions suivantes :

- l'appareil ne doit pas produire de brouillage;
- l'utilisateur de l'appareil doit accepter tout brouillage radioélectrique subi, même si le brouillage est susceptible d'en compromettre le fonctionnement.

The device meets the exemption from the routine evaluation limits in section 2.5 of RSS 102 and compliance with RSS-102 RF exposure, users can obtain Canadian information on RF exposure and compliance.

Le dispositif rencontre l'exemption des limites courantes d'évaluation dans la section 2.5 de RSS 102 et la conformité à l'exposition de RSS-102 rf, utilisateurs peut obtenir l'information canadienne sur l'exposition et la conformité de rf.

This transmitter must not be collocated or operating in conjunction with any other antenna or transmitter. **Cet émetteur ne doit pas être Co-placé ou ne fonctionnant en même temps qu'aucune autre antenne ou émetteur.**

Dec 29, 2015

XX-B44 IB (EU + FR + Sp)
Size: 214mm x 756mm
Printing color: Black, 1C + 1C
Dec 30, 2015
100gsm2 WF (書紙)

IMPORTANT

Read before proceeding

If you have any question regarding the operation or use of this product, please visit www.ekids.com to view answers to frequently asked questions.

Introduction

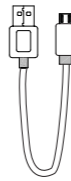
Thank you for purchasing the B44. This product is designed to provide high quality wireless sound for your iPad, iPhone, iPod, computer, PDA or other Bluetooth audio device. This instruction booklet explains the basic operation and care of the unit. Please read them carefully and keep for future reference.

Maintenance

- Place the unit on a level surface away from sources of direct sunlight or excessive heat.
- Protect your furniture when placing your unit on a natural wood and lacquered finish. A cloth or other protective material should be placed between it and the furniture.
- Clean your unit with a soft cloth moistened only with mild soap and water. Stronger cleaning agents, such as benzene, thinner or similar materials can damage the surface of the unit.

What's Included

- B44 speaker
- USB charging cable

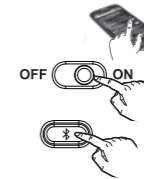


USB charging cable

B44

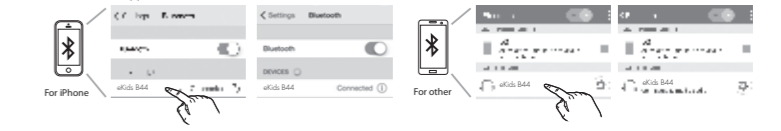
Pairing Your Device

Pairing is the setup process to introduce your Bluetooth-capable device to the B44. Once your device is paired, the B44 can recognize it and you can play your audio through it.



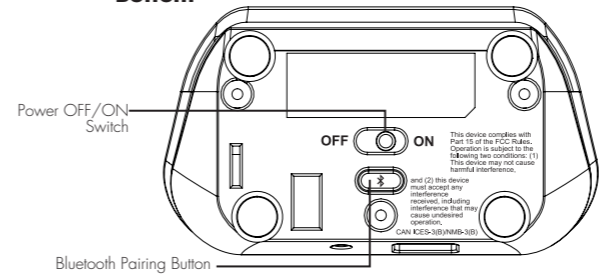
- Turn on your Bluetooth device and make it "discoverable" by turning on Bluetooth mode (check in Options or Settings).
- Slide the **Power OFF/ON Switch** to ON to turn on the B44. *The first time the unit is powered on, it will enter auto-pairing mode and attempt to connect to a Bluetooth device (if so, skip to step 4). Otherwise, follow step 3 to begin pairing.*
- Press and hold the **Bluetooth Button** for 2 seconds. The B44 will beep and the Bluetooth status indicator light on top of the unit will flash quickly.

4. "eKids B44" should appear in your device's Bluetooth menu. If "Not Paired", "Not Connected" or similar message appears, select "eKids B44" to connect it. If prompted for a passcode, enter "1234" on your device's keypad.



- If pairing is successful, a tone will sound and the Bluetooth indicator light will glow solid, indicating the B44 is ready to play music. There should also be an indication on your device. If no device is successfully paired within 2 minutes the B44 will default to previous mode. Once the B44 is paired to a device, it will attempt to autolink when the device is within range (about 30 feet).

Bottom



Back



Using the B44

Pairing with a Different Device

When you power ON the speaker, it will automatically link with the previously paired Bluetooth device as long as that device is still within range (approx. 30 feet). To pair with a different device, follow steps 1 - 4 under "Pairing Your Device" on previous page.

Playing Audio Via Bluetooth

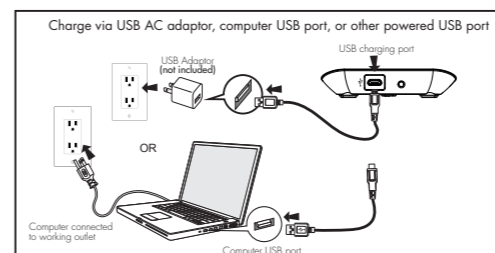
- Slide the **Power OFF/ON Switch** to ON to turn on the unit. The Bluetooth status indicator will glow solid blue when a linked device is in range and detected. You can then listen to audio streamed wirelessly from your paired Bluetooth device.
- Use controls on your Bluetooth device to adjust volume and to play, pause and navigate tracks.
- When done listening, slide the **Power OFF/ON Switch** to OFF to turn the unit off.

Using the B44

Charging the Unit

CHARGE UNIT BEFORE USE

- Connect the micro USB plug to the micro USB charging port on the back of the unit.



NOTE: When the unit is on and not connected to a power source, the Power/Charging/Pairing Indicator Light flashing red means the battery needs charging.

- Connect the standard USB plug end of the cable to a power USB port on a computer or other USB charging device. For first time use, charge unit for about 5 hours.
- The **Power/Charging/Pairing Indicator Light on the back of the unit glows red steadily while the unit is charging** and turns OFF once the unit is fully charged. If unit is not powered on when micro USB plug is connected, the red light glows steadily to indicate unit is charging.

Troubleshooting

Unit doesn't respond (no power)

- Make sure unit is completely charged.
- Check that all connections are correct and properly plugged in.
- Make sure your device is properly paired with the B44.
- Make sure the OFF/ON Switch is not in the OFF position.
- The rechargeable battery in your speaker can be replaced only by eKids Consumer Repair Department.

Trouble pairing device/computer with B44

Bluetooth implementation varies depending on your device's hardware and operating system. Please see our website for updates on pairing.

- When the speaker is in ⌘ mode, it will automatically link with the last previously paired Bluetooth device if the device is still within range (approx. 30 feet). To pair with a different device you must turn off Bluetooth capability on the already paired device, or take it out of range.
- If your device does not auto-link when within range, re-pair the device. To do so, first delete the B44 from your Bluetooth devices menu. Slide the OFF/ON Switch to the ON position and press the ⌘ button to begin pairing (see page 5 for pairing details).
- Make sure your device is working properly. Check your device's manual for details on Bluetooth pairing and linking.

For further information and to see the latest instructions, visit www.ekids.com/support

Declaration ID DOXXXXX