

Introduction

Thank you for purchasing this unit. This product is designed to provide high quality wireless audio and keyboard input for your iPad, iPhone, iPod, tablet, computer, PDA or other Bluetooth audio device. It also provides handsfree speakerphone functionality.

This instruction booklet explains the basic operation and care of the unit. Please read it carefully and keep for future reference.

Maintenance

- Place the unit on a level surface away from sources of direct sunlight or excessive heat.
- Protect your furniture when placing your unit on a natural wood or lacquered finish. A cloth or other protective material should be placed between it and the furniture.
- Clean your unit with a soft cloth moistened only with mild soap and water. Stronger cleaning agents, such as Benzene, thinner or similar materials can damage the surface of the unit.

Table of Contents

Meet Your Unit / Staff Setup	1-2
Special Keys / Functions	3
Charging Devices with the USB Ports	4
Using Bluetooth: Pairing Your Device.....	5
Playing Audio Via Bluetooth / Using the Speakerphone.....	6
Playing Audio Via Aux / Troubleshooting	7
Consumer Product Safety Guide	8
Warranty Information	9

Built-in Bluetooth (Version 2.1 + EDR, Class 2) system with remote "pairing" of cell phones to the Unit (supports A2DP, AVRCP, HFP, HSP profiles)
HID Protocol Support: iPad/iPad2, iPhone3GS or later with the latest iOS and Android platform 3.0 or above.



is a registered trademark of SRS Labs, Inc. TruBass technology is incorporated under license from SRS Labs, Inc.

SRS WOW[®], which features TruBass[®], significantly improves the playback quality of audio, delivering a dynamic 3D entertainment experience with deep, rich bass and high frequency clarity for crisp detail.

FCC Information

FCC Radiation Exposure Statement

FCC ID:EMOHIDM5 IC:986B-HIDM5

This equipment complies with FCC RF radiation exposure limits set forth for an uncontrolled environment. This transmitter must not be co-located or operating in conjunction with any other antenna or transmitter.

This Device complies with RSS-210 of the IC Rules; Operation is subject to the following two conditions:

- (1) This device may not cause interference and
- (2) This device must accept any interference received, including interference that may cause undesired operation

This device complies with Part 15 of the FCC Rules, operation is subject to the following two conditions:
(1) This device may not cause harmful interference, and (2) this device must accept any interference received, including interference that may cause undesired operation.

- Warning: Changes or modifications to this unit not expressly approved by the party responsible for compliance could void the user's authority to operate the equipment.
- NOTE: This equipment has been tested and found to comply with the limits for a Class B digital device, pursuant to Part 15 of the FCC Rules.

These limits are designed to provide reasonable protection against harmful interference in a residential installation. This equipment generates, uses and can radiate radio frequency energy and, if not installed and used in accordance with the instructions, may cause harmful interference to radio communications.

However, there is no guarantee that interference will not occur in a particular installation. If this equipment does cause harmful interference to radio or television reception, which can be determined by turning the equipment off and on, the user is encouraged to try to correct the interference by one or more of the following measures:

- Reorient or relocate the receiving antenna.
- Increase the separation between the equipment and receiver.
- Connect the equipment into an outlet on a circuit different from that to which the receiver is connected.
- Consult the dealer or an experienced radio/TV technician for help.

This Class B digital apparatus complies with Canadian ICES-003.

Cet appareil numérique de la classe B est conforme à la norme NMB-003 du Canada.

Information FCC

FDéclaration de la FCC sur l'exposition aux radiations FCC ID:EMOHIDM5 IC:986B-HIDM5

Le présent appareil est conforme aux CNR d'Industrie Canada applicables aux appareils radio exempts de licence.

L'exploitation est autorisée aux deux conditions suivantes : (1) l'appareil ne doit pas produire de brouillage, et (2) l'utilisateur de l'appareil doit accepter tout brouillage radioélectrique subi, même si le brouillage est susceptible d'en compromettre le fonctionnement.

Le dispositif rencontre l'exemption des limites courantes d'évaluation dans la section 2.5 de RSS 102 et la conformité à l'exposition de RSS-102 rf, utilisateurs peut obtenir l'information canadienne sur l'exposition et la conformité de rf.

Cet appareil répond aux exigences du paragraphe 15 de la loi de la Commission Fédérale sur les Communications. L'utilisation de cet appareil doit répondre aux deux conditions suivantes: (1) Cet appareil ne doit pas provoquer d'interférences nuisibles, et (2) cet appareil doit accepter toutes les interférences reçues, y compris les interférences pouvant provoquer un fonctionnement non désiré.

Avertissement : Tout changement ou modification apporté à cet appareil sans le consentement expresse de la partie responsable pour la conformité peut annuler le droit de l'utilisateur d'utiliser cet appareil.

Remarque : Cet équipement a été testé et jugé conforme aux limitations pour un appareil numérique de Classe B, selon la Section 15 de la réglementation FCC.

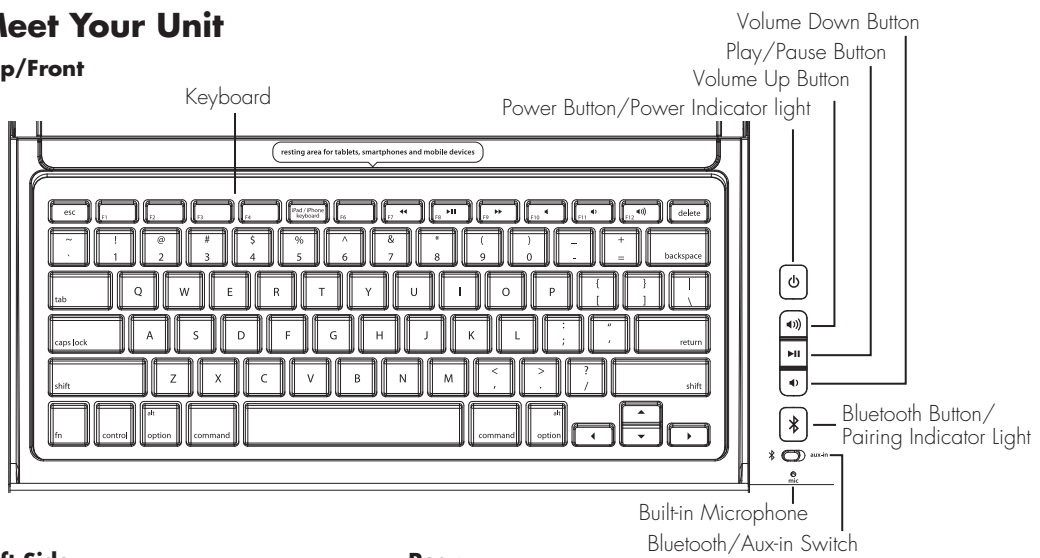
Ces limites sont conçues pour fournir une protection raisonnable contre les interférences nuisibles dans une installation résidentielle. Cet équipement génère, utilise et peut émettre des fréquences radio et, s'il n'est pas installé et utilisé selon les instructions, peut causer des interférences nuisibles aux communications radio.

Cependant, il n'existe aucune garantie que des interférences ne se produiront pas dans une installation particulière. Si cet équipement produit des interférences nuisibles sur la réception de la radio ou de la télévision, ce que vous pouvez facilement constater en éteignant et en rallumant l'équipement, nous vous encourageons à prendre l'une ou plusieurs des mesures correctives suivantes :

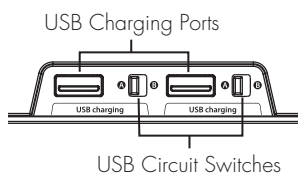
- Réorienter ou déplacer l'antenne réceptrice,
 - Éloigner davantage l'appareil du récepteur.
 - Branchez l'équipement sur une prise ou un circuit auquel le récepteur n'est pas branché.
 - Consultez votre revendeur ou un technicien radio/télévision qualifié pour plus d'informations.
- ppareils digitaux de Classe B compatible avec l'ICES-003 Canadien.

Meet Your Unit

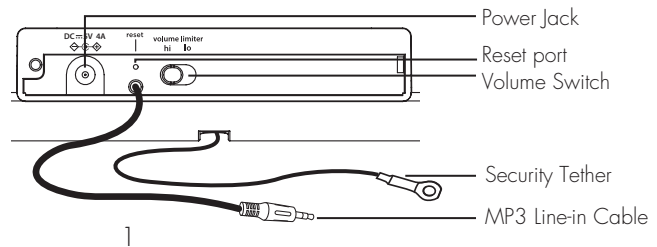
Top/Front



Left Side



Rear



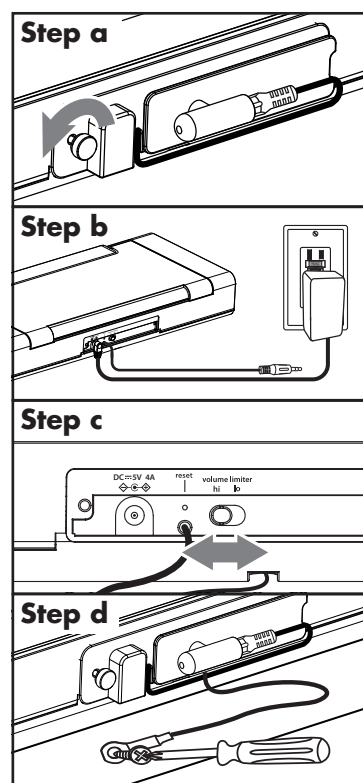
Meet Your Unit

Included

- HiDM5 system (keyboard)
- 100V-240V universal AC adaptor
- Attached 3.5 mm stereo audio cable
- Attached security tether

Staff Setup

- Unscrew thumbscrew on rear of unit to access power jack, hi/low volume output switch and reset port.
- Attach power adaptor to working power outlet and the other end to the power jack on the rear of the unit.
- Adjust volume output switch to Hi for larger rooms or Low for smaller rooms.
- Screw security tether to a safe, secure surface. DO NOT attach to power outlet or other location that may present a safety hazard.
- Replace rear cover and secure with thumbscrew

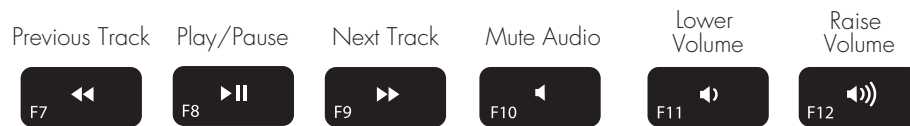


Special keys/functions

Press to toggle iPad/iPhone keyboard control on/off

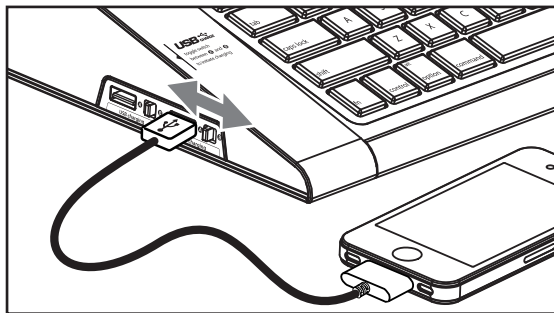
iPad / iPhone
keyboard

Note: This key is specific to Mac IOS devices, and will have no effect with other devices



Charging Devices with the USB Ports

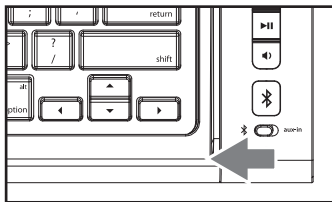
1. The unit can charge two USB devices at once using the two USB charging ports on the left side of the unit. A USB cable is not included.
2. To charge a USB device, connect the standard end of the USB cable to a USB port and the other end to the device you wish to charge.
3. Monitor your device's battery indicator to confirm the device is charging. If the device is NOT charging, try moving the **USB Mode Switch** to a different position (A or B). If the device still does not charge, try unplugging the device from the USB port then reconnecting it.



Using Bluetooth: Pairing Your Device

NOTE: See the HiDM5 Bluetooth Connection Guide for complete pairing details.

1. Move the **Bluetooth/Aux-in Switch** on the lower right front of keyboard to the Bluetooth position (left).



2. Press and release the **Power Button** to turn on the unit (the **Power** light will turn blue).
3. Turn on Bluetooth capability on your device and make it discoverable (see your device's instructions to add or setup a Bluetooth device).
4. *Press and hold* the **Bluetooth Button** on the unit until it flashes blue and the unit beeps twice to indicate pairing attempt. The blue light will flash while the unit attempts to pair.
5. "HiDM5" should appear in your device's list of Bluetooth devices; its status display may indicate "not connected". Select HiDM5 to connect. If your device asks for a password, enter **1234** on the keyboard of your device. If no device is paired within 2 minutes, the **Power Button** will change from blue to red. If this occurs, retry steps 2-4.
5. Once paired with a device, the blue **Bluetooth** light will glow steadily. There should be an indication on your device that pairing is complete. On some devices, you must then select "use as a stereo audio device" or similar on the device's Bluetooth menu. Once paired, your device should link to the HiDM5 whenever within range. You can now use the keyboard with the active app on your device, play Bluetooth audio and use as a speakerphone.

Playing Audio Via Bluetooth

1. Move the **Bluetooth/Aux-in Switch** to the Bluetooth position to listen to audio streamed wirelessly from your paired iPad, iPhone, iPod or other Bluetooth device.
2. Press and release the **⏻ Button** to turn on the unit. The blue **📶** light will flash as the unit searches for a previously paired device, and then turn solid blue when a previously paired device is detected.
3. Press and release the **▶|| Key/Button** to play or pause audio from your Bluetooth device.
NOTE: Play/Pause only works in Bluetooth mode. It does not control aux line-in devices.
4. Use the **◀ or ▶) Keys/Buttons** to adjust volume.
5. When done listening, press the **⏻ Button** to turn the unit off.

Using the Speakerphone

1. Move the **Bluetooth/Aux-in Switch** to the Bluetooth position to use the speakers as a speakerphone for a linked Bluetooth-capable phone during an incoming or active call. Playing audio is muted during a speakerphone call.
2. Press and release the **⏻ Button** to turn on the unit.
3. Use the **◀ or ▶) Keys/Buttons** to adjust volume. You may wish to adjust the volume on your audio device, too.
4. When a call is received, playing music is muted to hear the ring tone. Press the green **📶 Button** to answer the call, or press the red **⏻ Button** to ignore it.
5. When the call is completed, press the **⏻ Button** or **📶 Button** to end the call and resume previous function.

Playing Audio via Aux

1. Move the **Bluetooth/Aux Switch** to the Aux position to listen to audio via aux line-in.
2. Connect the included 3.5mm audio plug to the headphone or line-out jack on your audio device.
3. Press and release the **⏻ Button** to turn on the unit.
4. Use the **⏮ or ⏭) Keys/Buttons** to adjust volume. You may wish to adjust the volume on your audio device, too.
5. When done listening, press and release the **⏻ Button** to turn the unit off. Replace the cap on the line in plug. Remember to turn off your audio device, too.

Troubleshooting

Unit doesn't respond (no power)

- Check that all connections are correct and properly plugged in. Make sure your device is properly paired with the HiDM5.

Keyboard doesn't respond (when I type, nothing appears on my tablet/device)

- Touch the tablet/device's screen to activate the app or browser you wish to input text to. When the cursor appears, you should be able to input text using the HiDM5 keyboard

The on-screen keyboard on my iPad/iPhone/iPod isn't accessible

- Press the F5 key ("iPad/iPhone keyboard" key on unit) to toggle the iPad/iPhone/iPod on-screen keyboard on and off.

Trouble pairing device with HiDM5

Bluetooth implementation varies depending on your computer's hardware and operating system.

- Make sure you have the latest firmware for your iPad, iPhone or iPod (update via iTunes if needed).
- Make sure your device is working properly. Check your device's manual for details on Bluetooth pairing and linking.

For further information, visit www.hoteltech.com/support

Consumer Product Safety Guide

IMPORTANT SAFETY INSTRUCTIONS

When used in the directed manner, this unit has been designed and manufactured to ensure your personal safety. However, improper use can result in potential electrical shock or fire hazards. Please read all safety and operating instructions carefully before installation and use, and keep these instructions handy for future reference. Take special note of all warnings listed in these instructions and on the unit.

1. **Water and Moisture** – The unit should not be used near water. For example: near a bathtub, washbowl, kitchen sink, laundry tub, swimming pool or in a wet basement.
2. **Ventilation** – The unit should be situated so that its location or position does not interfere with its proper ventilation. For example, it should not be situated on a bed, sofa, rug or similar surface that may block ventilation openings. Also, it should not be placed in a built-in installation, such as a bookcase or cabinet, which may impede the flow of air through the ventilation openings.
3. **Heat** – The unit should be situated away from heat sources such as radiators, heat registers, stoves or other appliances (including amplifiers) that produce heat.
4. **Power Sources** – The unit should be connected to a power supply only of the type described in the operating instructions or as marked on the appliance.
5. **Power-Cable Protection** – Power supply cables should be routed so that they are not likely to be walked on or pinched by items placed upon or against them. It is always best to have a clear area from where the cable exits the unit to where it is plugged into an AC socket.
6. **Cleaning** – The unit should be cleaned only using a warm damp cloth. Do not use solvents, etc.
7. **Objects and Liquid Entry** – Care should be taken so that objects do not fall and liquids are not spilled into any openings or vents located on the product.
8. **Attachments** – Do not use attachments not recommended by the product manufacturer.
9. **Lightning and Power Surge Protection** – Unplug the unit from the wall socket and disconnect the antenna or cable system during a lightning storm or when it is left unattended and unused for long periods of time. This will prevent damage to the product due to lightning and power-line surges.
10. **Overloading** – Do not overload wall sockets, extension cords, or integral convenience receptacles as this can result in a risk of fire or electric shock.
11. **Damage Requiring Service** – The unit should be serviced by qualified service personnel when:
 - A. the power supply cable or plug has been damaged.
 - B. objects have fallen into or liquid has been spilled into the enclosure.
 - C. the unit has been exposed to rain.
 - D. the unit has been dropped or the enclosure damaged.
 - E. the unit exhibits a marked change in performance or does not operate normally.
12. **Periods of Nonuse** – If the unit is to be left unused for an extended period of time, such as a month or longer, the power cable should be unplugged from the unit to prevent damage or corrosion.
13. **Servicing** – The user should not attempt to service the unit beyond those methods described in the user's operating instructions. Service methods not covered in the operating instructions should be referred to qualified service personnel.

Questions? Visit www.hoteltech.com
or call 1-800-288-2792 Toll Free

Limited 30 Day Warranty
(valid in contiguous U.S.A. only: not valid in Hawaii or Alaska)

HTI, a division of Hotel Technologies Inc. (hereafter referred to as Hotel Technologies), warrants this product to be free from defects in workmanship and materials, under normal use and conditions, for a period of 30 days from the date of receipt of the item.

Should service be required by reason of any defect or malfunction during the warranty period, Hotel Technologies will repair or, at its discretion, replace this product without charge. This decision is subject to verification of the defect or malfunction upon delivery of this product to the Factory Service Center listed below.

Before returning this product for service, please first replace the batteries (if applicable) with fresh ones, as exhausted or defective batteries are the most common cause of problems encountered.

If service is still required:

1. Fax a representative at **915.633.1388** with a Return Authorization request including proof of purchase date (i.e., invoice number and date from distributor or HTI) to receive a Return Authorization Number. Issuance of Return Authorization Number is subject to review prior to granting.

NO ITEM CAN BE ACCEPTED WITHOUT A RETURN AUTHORIZATION NUMBER.

2. Remove batteries (if applicable) and pack the unit in a well-padded, heavy corrugated box.
3. Send the unit by method agreed to with your representative to the Factory Service Center listed below:

Consumer Repair Department

Hotel Technologies Inc.
1330 Goodyear Drive
El Paso TX 79936-6420

NOTE: Improperly packed items or items received without an RA # cannot receive credit.

NOTE: This warranty is valid only if the product is used for the purpose for which it was designed. It does not cover (i) products which have been damaged by negligence, misuse or accident, or which have been modified or repaired by unauthorized persons; (ii) cracked or broken cabinets, or units damaged by excessive heat; (iii) damage to tape cassettes (if applicable); (iv) the cost of shipping this product to the Factory Service Center and its return to the owner.

This warranty is valid only in the United States of America and does not extend to owners of the product subsequent to the original purchaser. Any applicable implied warranties are also limited to 30 days, and Hotel Technologies will not be liable for consequential damages. (Some states do not allow limitations on implied warranties or exclusion of consequential damages, so these restrictions may not apply to you.) This warranty gives you specific legal rights, and you may also have other rights which vary from state to state.