

iBT4 IB
Size: 153mm x 120mm
Printing color: Black
Dec 14, 2012.

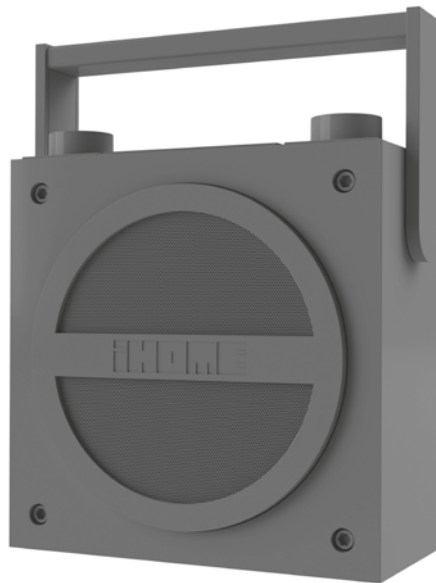
Warranty | iHome

P1

iHome®



iBT4
Bluetooth Wireless Boombox
with FM Radio and
Rechargeable Battery



instruction manual

iBT4

Introduction

Thank you for purchasing the iHome iBT4. This product is designed to provide high quality wireless sound for your iPad, iPhone, iPod, computer, PDA or other Bluetooth audio device.

Along with the included Quick Bluetooth Connection Guide this instruction booklet explains the basic operation and care of the unit. Please read them carefully and keep for future reference.

Maintenance

- Place the unit on a level surface away from sources of direct sunlight or excessive heat.
- Protect your furniture when placing your unit on a natural wood and lacquered finish. A cloth or other protective material should be placed between it and the furniture.
- Clean your unit with a soft cloth moistened only with mild soap and water. Stronger cleaning agents, such as benzene, thinner or similar materials can damage the surface of the unit.

FCC Information

FCC Radiation Exposure Statement

This equipment complies with FCC RF radiation exposure limits set forth for an uncontrolled environment. This transmitter must not be co-located or operating in conjunction with any other antenna or transmitter.

This Device complies with RSS-102 of the IC Rules; Operation is subject to the following two conditions:

(1) This device may not cause harmful interference and

(2) This device must accept any interference received, including interference that may cause undesired operation.

The device meets the exemption from the routine evaluation limits in section 2.5 of RSS 102 and compliance with RSS-102 RF exposure, users can obtain Canadian information on RF exposure and compliance.

This device complies with Part 15 of the FCC Rules, operation is subject to the following two conditions: (1) This device may not cause harmful interference, and (2) this device must accept any interference received, including interference that may cause undesired operation.

- Warning: Changes or modifications to this unit not expressly approved by the party responsible for compliance could void the user's authority to operate the equipment.
- NOTE: This equipment has been tested and found to comply with the limits for a Class B digital device, pursuant to Part 15 of the FCC Rules.

These limits are designed to provide reasonable protection against harmful interference in a residential installation. This equipment generates, uses and can radiate radio frequency energy and, if not installed and used in accordance with the instructions, may cause harmful interference to radio communications.

However, there is no guarantee that interference will not occur in a particular installation. If this equipment does cause harmful interference to radio or television reception, which can be determined by turning the equipment off and on, the user is encouraged to try to correct the interference by one or more of the following measures:

- Reorient or relocate the receiving antenna.
- Increase the separation between the equipment and receiver.
- Connect the equipment into an outlet on a circuit different from that to which the receiver is connected.
- Consult the dealer or an experienced radio/TV technician for help.

This Class B digital apparatus complies with Canadian ICES-003.

Cet appareil numérique de la classe B est conforme à la norme NMB-003 du Canada

iBT4

FCC ID: EMOIBT4

IC: 986B-IBT4

QDID:B020169

iBT4

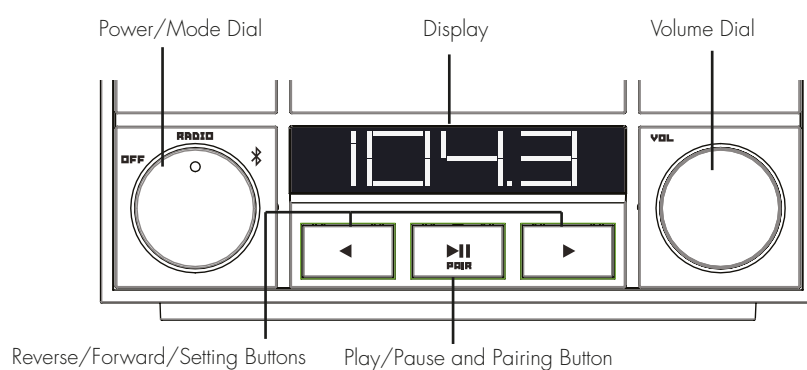
Table of Contents

Meet Your iBT4	1-2
Setting Up the Unit/Charging the Unit	3
Using Bluetooth:Pairing Your Device	4
Playing Audio Via Bluetooth.....	5
Playing Audio Via Aux-in/ Playing Audio Via Aux-out	6
FM Radio/ Using FM Radio in Other Countries.....	7
Resetting the Unit.....	8
Internal Rechargeable Lithium-ion Battery.....	9
Consumer Product Safety Guide	10-11
Troubleshooting	12
Warranty.....	13

Meet Your iBT4

iBT4

Top



Back Bottom



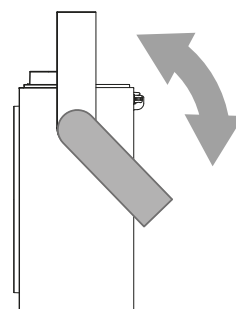
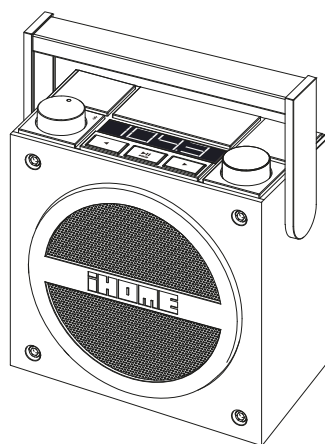
iBT4

Included

- iBT4 system
- 100V-240V universal AC adaptor



power adaptor



The handle of the unit can be placed in two positions, upright for carrying, or back for general use or tilt-back play.

Using the iBT4

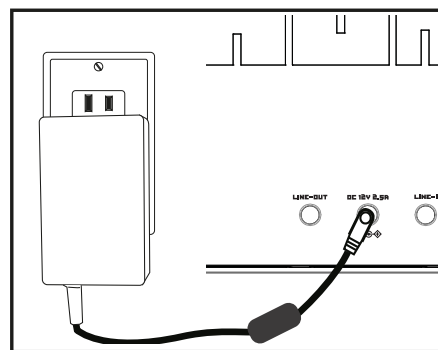
Setting Up the Unit

The unit can be operated using the included AC adaptor or on the internal rechargeable lithium ion battery for portable use.

Connect the included AC adaptor to the DC jack located on the back of the unit and connect the other end to a working wall outlet.

Charging the Unit

The internal lithium ion battery charges when connected to power via the AC adaptor. For first time use, charge the battery completely (for about 6 hours). The battery indicator on the display shows the battery/charging status.



Battery Indicator (charge status)



Using Bluetooth: Pairing Your Device

Using the iBT4

1. Turn on your Bluetooth-enabled device and turn on Bluetooth capability as described in the device's user manual.
2. Turn the **Power/Mode Dial right** to turn the unit ON (pairing is available in any mode).
3. Press and hold the **▶▶ Pairing/Play Pause Button** on the unit for 2 seconds to begin pairing the unit with your device. "PAIR" will flash on the display, indicating pairing attempt.



"iHome iBT4" should appear on your device's menu. If "Not Connected" or similar message appears, select "iHome iBT4" on the device to connect it. If your device asks for a password, enter **1234** or **0000** on the keyboard of your device. If no device is paired within 2 minutes, a tone will sound and the unit will revert to its previous mode. To retry pairing, turn the **Power/Mode Dial** to the OFF position (left) then follow steps 2 & 3 again.

4. Once paired with a device, the **PAIR** indicator on the display will stop flashing then disappear and the Bluetooth icon will remain. On some devices, you must then select "Use as Audio Device" or similar on the device's Bluetooth menu. Once paired, your device should link to the iBT4 whenever within range (about 30 feet).



NOTE: The unit can auto-link with up to 3 previously paired devices.

Using the iBT4

Pairing with a Different Device

When you power ON the speaker, it will automatically link with the previously paired Bluetooth device as long as that device is still within range (about 30 feet). To pair with a different device you must turn off the Bluetooth capability of the already paired device.

Playing Audio Via Bluetooth

1. Turn the **Power/Mode Dial** to the Bluetooth position (right) to enter Bluetooth mode. The **Bluetooth Indicator on the display** will flash and a tone will sound as the unit searches for a previously paired device, and then turn solid once a previously paired device is detected.
2. Press the **▶|| Pairing/Play Pause Button** on the unit to play audio from your linked Bluetooth device. While audio is playing, press to pause play, and again to resume play.
3. Press the **◀** or **▶ Buttons** on the unit to go to the previous or next track. Press and hold briefly to scan backward or forward within tracks.
4. Turn the **Volume Dial** to control the system volume.
5. When done listening, turn the **Power/Mode Dial** to the OFF position (left) to turn the unit off. Remember to turn off your audio device, too.

Using the iBT4

Playing Audio via Line-In

1. Connect one end of a standard stereo 3.5mm audio cable (not included) into the line-in jack on the back of the unit and the other end into the headphone or output jack of your audio device.
2. Turn the **Power/Mode Dial** on the unit RIGHT (to any mode) to turn it on.
3. Power on the audio device and use the controls on the device to play or pause audio and navigate tracks.
4. Turn the **Volume Dial** to control the system volume.
5. When done listening, turn the **Power/Mode Dial** to the OFF position (left) to turn the unit off. Remember to turn off your audio device, too.

Playing Audio via Line-out

You can connect the unit to an external speaker via the Line-out jack located on the back of the unit to expand the audio playing from the iBT4

1. Connect a 3.5 mm audio cable plug to the Line-out jack on back of the unit and connect the other end to the line-in jack on your external speaker. Note that the line output signal is mono.
2. Turn the **Power/Mode Dial** RIGHT (to any mode) to turn the unit on. The audio from the iBT4 will play from both the unit's speaker AND from the Line-out jack.
3. Turn the **Volume Dial** to control the system volume. The Volume Dial does NOT affect the output volume of the line out jack.
4. When done listening, turn the **Power/Mode Dial** to the OFF position (left) to turn the unit off. Remember to turn off any connected audio device, too.

NOTE: The Line-out jack is NOT a headphone jack.

FM Radio

Using the iBT4

1. Turn the **Power/Mode Dial** on the unit to Radio mode (center).
2. Press the ◀ or ▶ **Buttons** on the unit to tune in the desired station (press and hold to scan to the next clear station).
3. The unit has an external telescoping FM radio antenna; extend it gently and adjust it for best FM reception.
4. Turn the **Volume Dial** to control the system volume.
5. When done listening, turn the **Power/Mode Dial** to the OFF position (left) to turn the unit off.

Using FM Radio in Other Countries

Different areas of the world use different FM frequency steps and ranges. By default, this unit is set to USA frequency steps. To use the radio outside the USA:

1. Turn the **Power/Mode Dial** on the unit to Radio mode (center).
2. Press and hold BOTH the ◀ and ▶ **Buttons TOGETHER** until "USA" appears in the display.
3. Press and release the ◀ or ▶ **Buttons** to cycle to your location: Europe, Japan, Australia, China or USA.
4. Press and release BOTH ◀ and ▶ **Buttons TOGETHER** to exit frequency setting mode.

Using the iBT4

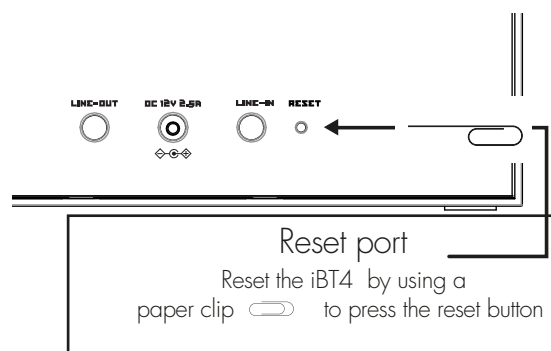
Resetting the Unit

If the unit “locks up” or becomes unresponsive, you can reset it to factory settings.

To do so, press and hold the ► **Button** and the ►► **Button TOGETHER for 8 SECONDS.**

A long beep will sound, indicating the unit has been reset. Note that you will need to re-pair Bluetooth devices.

Note: There is also a Reset port in the back of the unit. Insert the end of a paper clip or similar and hold briefly. A tone will indicate the unit has reset. Bluetooth links will remain intact.



Internal Rechargeable Lithium-ion Battery

This device uses an internal rechargeable lithium-ion battery that should last the lifetime of the device. If you suspect your battery may be dead, try charging it several times. If the battery does not recharge, please contact us for repair information.

WARNING/DISPOSAL OF UNIT

Please do NOT attempt to change the battery yourself. If the battery has died and you do not want us to replace your battery, you should follow the disposal instructions below:

- Never dispose of used batteries/electronics with ordinary solid wastes, since they contain toxic substances.
- Always dispose of used batteries/electronics in accordance with the prevailing community regulations that apply to the disposal of batteries/electronics. If there are no local regulations concerning battery/electronics disposal, please dispose of the device in a waste bin for electronic devices.
- Many electronics retailers now recycle batteries and other electronic components at no charge. Check to see which ones in your area do so.

CAUTION

The battery used in this device may present a risk of fire, explosion or chemical burn if mistreated

- Never use or charge the battery if it appears to be leaking, discolored, deformed, or in any way abnormal.
- Never disassemble the unit or attempt to remove battery as that could cause leakage of alkaline solution or other electrolytic substance.
- Always confirm that the temperature is 5°C – 35°C (41° - 95° Fahrenheit) before you charge the battery. Leakage or deterioration of the battery may occur if this warning is not heeded.
- Never expose the battery to any liquid.
- Never expose the battery to excessive heat such as direct sunlight or fire. Never use the battery pack in an unventilated vehicle where excessive internal temperatures may be encountered.
- Always keep the battery out of the reach of infants and small children.

Consumer Product Safety Guide

IMPORTANT SAFETY INSTRUCTIONS

When used in the directed manner, this unit has been designed and manufactured to ensure your personal safety. However, improper use can result in potential electrical shock or fire hazards. Please read all safety and operating instructions carefully before installation and use, and keep these instructions handy for future reference. Take special note of all warnings listed in these instructions and on the unit.

1. **Water and Moisture** – The unit should not be used near water. For example: near a bathtub, washbowl, kitchen sink, laundry tub, swimming pool or in a wet basement.
2. **Ventilation** – The unit should be situated so that its location or position does not interfere with its proper ventilation. For example, it should not be situated on a bed, sofa, rug or similar surface that may block ventilation openings. Also, it should not be placed in a built-in installation, such as a bookcase or cabinet, which may impede the flow of air through the ventilation openings.
3. **Heat** – The unit should be situated away from heat sources such as radiators, heat registers, stoves or other appliances (including amplifiers) that produce heat.
4. **Power Sources** – The unit should be connected to a power supply only of the type described in the operating instructions or as marked on the appliance.
5. **Power-Cable Protection** – Power supply cables should be routed so that they are not likely to be walked on or pinched by items placed upon or against them. It is always best to have a clear area from where the cable exits the unit to where it is plugged into an AC socket.
6. **Cleaning** – The unit should be cleaned only using a warm damp cloth. Do not use solvents, etc.
7. **Objects and Liquid Entry** – Care should be taken so that objects do not fall and liquids are not spilled into any openings or vents located on the product.

8. **Attachments** – Do not use attachments not recommended by the product manufacturer.
9. **Lightning and Power Surge Protection** – Unplug the unit from the wall socket and disconnect the antenna or cable system during a lightning storm or when it is left unattended and unused for long periods of time. This will prevent damage to the product due to lightning and power-line surges.
10. **Overloading** – Do not overload wall sockets, extension cords, or integral convenience receptacles as this can result in a risk of fire or electric shock.
11. **Damage Requiring Service** – The unit should be serviced by qualified service personnel when:
 - A. the power supply cable or plug has been damaged.
 - B. objects have fallen into or liquid has been spilled into the enclosure.
 - C. the unit has been exposed to rain.
 - D. the unit has been dropped or the enclosure damaged.
 - E. the unit exhibits a marked change in performance or does not operate normally.
12. **Periods of Nonuse** – If the unit is to be left unused for an extended period of time, such as a month or longer, the power cable should be unplugged from the unit to prevent damage or corrosion.
13. **Servicing** – The user should not attempt to service the unit beyond those methods described in the user's operating instructions. Service methods not covered in the operating instructions should be referred to qualified service personnel.

Questions? Visit www.ihomeaudio.com
or call 1-800-288-2792 Toll Free

Troubleshooting

Unit doesn't respond (no power)

- Make sure unit is completely charged.
- Check that all connections are correct and properly plugged in.
- Make sure your device is properly paired with the iBT4.
- Make sure the **Power/Mode Dial** is not in the OFF (left) position.

Unit doesn't respond (locked up or frozen)

The unit may need to be reset. To do so, press and hold the **▶ Button** and the **▶|| Button TOGETHER for 8 SECONDS**. A long beep will sound, indicating the unit has been reset.

Trouble pairing device/computer with iBT4

Bluetooth implementation varies depending on your device's hardware and operating system. Please see our website for updates on pairing.

- When you power ON the speaker, it will automatically link with the last previously paired Bluetooth device if the device is still within range (approx. 30 feet). To pair with a different device you must turn off Bluetooth capability on the already paired device, or take it out of range.
- Make sure your device is working properly. Check your device's manual for details on Bluetooth pairing and linking.

For further information and to see the latest instructions, visit www.ihomeaudio.com/support

Limited 1 Year Warranty

iHome Products, a division of SDI Technologies Inc. (hereafter referred to as SDI), warrants this product to be free from defects in workmanship and materials, under normal use and conditions, for a period of one (1) year from the date of original purchase.

Should this product fail to function in a satisfactory manner, it is best to first return it to the store where it was originally purchased. Should this fail to resolve the matter and service still be required by reason of any defect or malfunction during the warranty period, SDI will repair or, at its discretion, replace this product without charge. This decision is subject to verification of the defect or malfunction upon delivery of this product to the Factory Service Center authorized by SDI Customer Service. The product must include proof of purchase, including date of purchase. An out-of-warranty fee for service will be charged for units that are received without proof of purchase.

Before returning this product for service, please first replace the batteries (if applicable) with fresh ones, as exhausted or defective batteries are the most common cause of problems encountered.

If service is still required:

1. Call SDI Customer Service at 1-800-288-2792 for Return Authorization and for the address of the Factory Service Center.
2. Remove the batteries (if applicable) and pack the unit in a well padded, heavy corrugated box. SDI is not responsible for damage that occurs during shipping to the Factory Service Center.
3. Enclose a photocopy of your sales receipt, credit card statement, or other proof of the date of purchase, if within the warranty period. Also include your name and address information, a brief description for why the unit is being returned, and the return authorization number. No unit can be processed without a return authorization number.
4. Write the return authorization number on the side of the shipping package and send the unit prepaid and insured to the Factory Service Center address authorized by SDI Customer Service.

Disclaimer of Warranty

NOTE: This warranty is valid only if the product is used for the purpose for which it was designed. It does not cover (i) products which have been damaged by negligence or willful actions, misuse or accident, or which have been modified or repaired by unauthorized persons; (ii) cracked or broken cabinets, or units damaged by excessive heat; (iii) damage to digital media players, CD's or tape cassettes (if applicable); (iv) the cost of shipping this product to the Factory Service Center and its return to the owner. This warranty is valid only in the United States of America and does not extend to owners of the product other than to the original purchaser. In no event will SDI or any of its affiliates, contractors, resellers, their officers, directors, shareholders, members or agents be liable to you or any third party for any consequential or incidental damages, any lost profits, actual, exemplary or punitive damages. (Some states do not allow limitations on implied warranties or exclusion of consequential damages, so these restrictions may not apply to you.) This warranty gives you specific legal rights, and you may also have other rights which vary from state to state.

Your acknowledgement and agreement to fully and completely abide by the above mentioned disclaimer of warranty is contractually binding to you upon your transfer of currency (money order, cashier's check, or credit card) for purchase of your SDI product.

© 2013 SDI Technologies, Inc. All rights reserved
Questions? Visit www.ihomeaudio.com
or call 1-800-288-2792 Toll Free

iBT4-121412-A

Printed in China