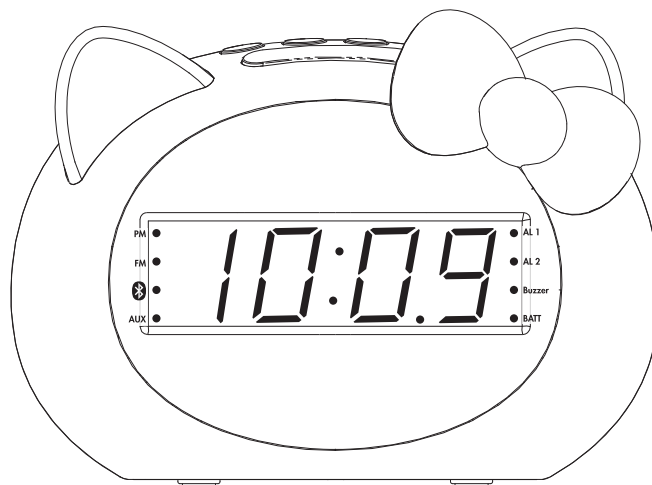


**HELLO
KITTY®** | iHome

Si-B62
Bluetooth
FM Clock Radio
with USB Charging



instruction manual

Si-B62

Introduction

Thank you for purchasing the iHome Si-B62. This product is designed to provide high quality wireless sound from your iPad, iPhone, iPod or other Bluetooth audio device.

Along with the included Quick Bluetooth Connection Guide this instruction booklet explains the basic operation and care of the unit. Please read them carefully and keep for future reference.

Maintenance

- Place the unit on a level surface away from sources of direct sunlight or excessive heat.
- Protect your furniture when placing your unit on a natural wood and lacquered finish. A cloth or other protective material should be placed between it and the furniture.
- Clean your unit with a soft cloth moistened only with mild soap and water. Stronger cleaning agents, such as thinner or similar materials can damage the surface of the unit.

FCC Information

FCC Radiation Exposure Statement

This equipment complies with FCC RF radiation exposure limits set forth for an uncontrolled environment.

This device complies with Part 15 of the FCC Rules, operation is subject to the following two conditions: (1) This device may not cause harmful interference, and (2) this device must accept any interference received, including interference that may cause undesired operation.

- Warning: Changes or modifications to this unit not expressly approved by the party responsible for compliance could void the user's authority to operate the equipment.
- NOTE: This equipment has been tested and found to comply with the limits for a Class B digital device, pursuant to Part 15 of the FCC Rules. These limits are designed to provide reasonable protection against harmful interference in a residential installation. This equipment generates, uses and can radiate radio frequency energy and, if not installed and used in accordance with the instructions, may cause harmful interference to radio communications. However, there is no guarantee that interference will not occur in a particular installation. If this equipment does cause harmful interference to radio or television reception, which can be determined by turning the equipment off and on, the user is encouraged to try to correct the interference by one or more of the following measures:
 - Reorient or relocate the receiving antenna.
 - Increase the separation between the equipment and receiver.
 - Connect the equipment into an outlet on a circuit different from that to which the receiver is connected.
 - Consult the dealer or an experienced radio/TV technician for help.

CAN ICES-3 (B)/NMB-3(B)

IC Statement

This device complies with Industry Canada licence-exempt RSS standard(s). Operation is subject to the following two conditions: (1) this device may not cause interference, and (2) this device must accept any interference, including interference that may cause undesired operation of the device.
Le présent appareil est conforme aux CNR d'Industrie Canada applicables aux appareils radio exempts de licence. L'exploitation est autorisée aux deux conditions suivantes : (1) l'appareil ne doit pas produire de brouillage, et (2) l'utilisateur de l'appareil doit accepter tout brouillage radioélectrique subi, même si le brouillage est susceptible d'en compromettre le fonctionnement.

The device meets the exemption from the routine evaluation limits in section 2.5 of RSS 102 and compliance with RSS-102 RF exposure, users can obtain Canadian information on RF exposure and compliance.
Le dispositif rencontre l'exemption des limites courantes d'évaluation dans la section 2.5 de RSS 102 et la conformité à l'exposition de RSS-102 rf, utilisateurs peut obtenir l'information canadienne sur l'exposition et la conformité de rf.

Si-B62

FCC ID: EMOSIB62
IC: 986B-SIB62

Si-B62

Table of Contents

Meet Your Si-B62 5

The Display/Setting Up the Unit 6

Replacing and Installing Clock Backup Batteries 7

Setting the Clock/ FM Radio 8

Setting and Using FM Presets 9

Setting and Using the Alarms 10

Previewing Alarms and Turning Alarms On/Off 10

Snooze/Dimmer Button/Sleep Mode 11

Using Bluetooth: Pairing Your Device 12

Pairing Your Device Using Standard Bluetooth 13

Pairing with a Different Device 13

Playing Audio Via Bluetooth/Playing Audio Via Aux-in 14

Charging Devices via USB Port 15

Troubleshooting 16

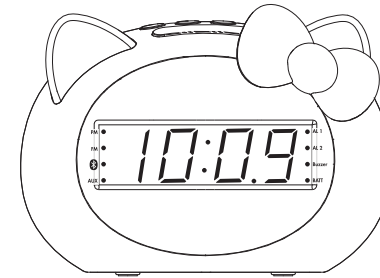
Consumer Product Safety Guide 17

Warranty 18

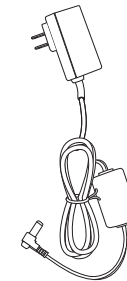
Si-B62

Included

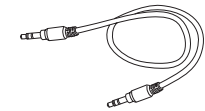
- Si-B62 unit
- 100V-240V universal AC adaptor
- 12 inch audio cable



Si-B62



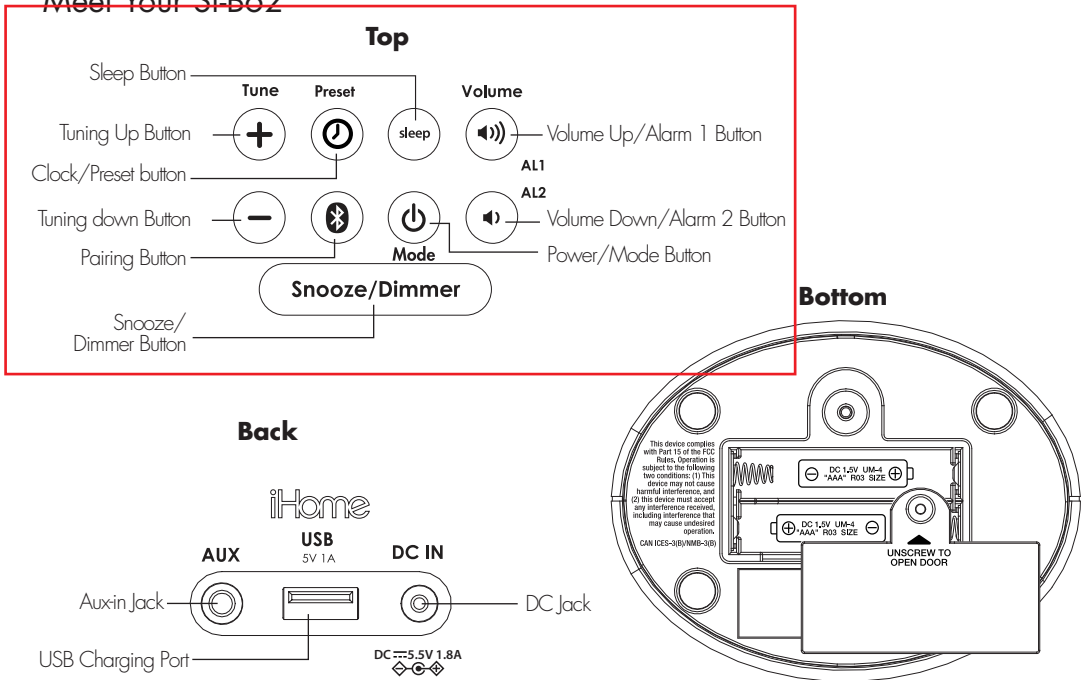
AC adaptor



12 inch audio cable

Si-B62

Meet Your Si-B62



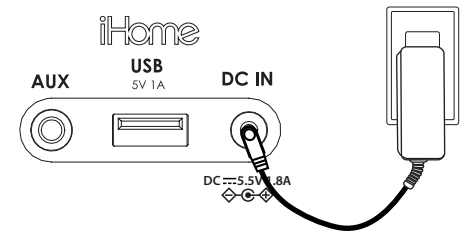
Using the Si-B62

The Display



Setting Up the Unit

Connect the included AC adaptor to the DC jack located on the back of the unit and connect the other end to a working wall outlet. To turn unit on press and release the **Power/Mode Button**.



Using the Si-B62

Replacing and Installing Clock Backup Batteries

Note: 2 AAA batteries are included with the unit. Install them before using the unit.

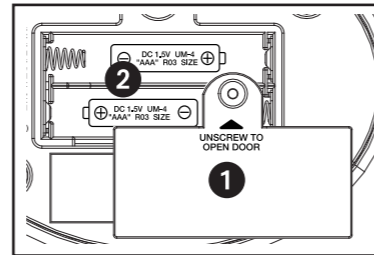
This model is equipped with a battery backup circuit that will maintain the time and alarm time settings in the event of a temporary power interruption (the display is NOT maintained). The battery backup circuit will also operate the buzzer alarm to wake you up at the selected wake up time even if the power is out. When the backup batteries are getting weak the Low Backup Battery Indicator will appear solid on the display. When you see this flashing indicator you should replace the backup batteries as soon as possible. Note: We recommend alkaline batteries for best performance.

To install/replace the backup batteries:

IMPORTANT: When replacing the backup batteries be sure to have the unit connected to the AC outlet to maintain all of your settings, otherwise it will be necessary to reset the time and alarm time after the batteries are replaced.

1. Slide and remove the battery door located on the bottom of the unit. If replacing batteries, remove the exhausted batteries.
2. Insert 2 fresh AAA batteries in the backup battery compartment. Make sure the polarity of the batteries ("+" or "-" nodes) matches the illustration.
3. Slide and close the battery compartment door. Confirm that the backup battery indicator is not flashing in the display.

Note: Make sure you dispose of batteries properly (see your local regulations)



Battery Warning

- Do not heat above 75°C (167°F)
- Do not expose contents to water
- Do not open batteries
- Do not dispose of in fire
- Do not install backwards

Using the Si-B62

Setting the Clock

1. When unit power off press and hold the **⌚ Clock/Presets Button** for 2 seconds until the hour display flashes and a beep sounds.
2. Press the **-** or **+** **Buttons** to adjust the clock to the current hour. Make sure you set the correct AM/PM time. The PM indicator appears to the left of the display (there is no AM indicator).
3. Press the **⌚ Clock/Presets Button** to confirm the hour. The minutes display will flash.
4. Press the **-** or **+** **Buttons** to adjust the clock to the current minute setting.
5. Press the **⌚ Clock/Presets Button** to confirm the time and exit clock setting mode. 2 beeps will confirm clock setting is complete.

FM Radio

Extend the FM antenna for best reception.

1. Press and release the **⏻ Power/Mode Button** as needed until the FM indicator icon and current FM radio frequency appear on the display.
2. Press the **-** or **+** **Buttons** to tune the radio to the desired station (hold to scan for the next clear station).
3. Press the **🔊** or **🔇** **Buttons** to adjust the volume on the unit.
4. When you are through listening, press and hold the **⏻ Power/Mode Button** to turn the unit off.

Using the Si-B62

Setting and Using FM Presets

The unit allows you to store up to 10 FM radio station presets

1. Press and release the **Power/Mode Button** as needed until the FM indicator icon and current FM radio frequency appear on the display.
2. Press the **-** or **+** Buttons to tune the radio to the desired station (hold to scan for the next clear station).
3. Press and hold the **Clock/Presets Button** to setting mode (P01- P10 will flash 3 seconds), push the **-** or **+** Buttons to select the preset number (P01- P10) you wish to set.
4. Press and release the **Clock/Presets Button** to confirm. Continue steps 2-4 until you have set up to 10 preset stations.
5. To listen to a preset FM station at any time, just push Clock/Preset Button on FM radio mode and cycle to the desired preset.

Using the Si-B62

Setting and Using the Alarms

This unit has 2 separate alarms, each set the same way. Below we explain how to set Alarm 1.

To set alarm 2, follow the same steps using the **Alarm 1 Button**.

Alarms can only be set when unit is OFF.

Note: each step must be completed while display is flashing or step will time-out with any changes saved.

1. Press and hold the **Alarm 2 Button** for 2 seconds until the hour display and AL1 alarm indicator flash.
2. Press the **-** or **+** Buttons to adjust the alarm time to the desired hour (hold for rapid setting).
Make sure you set the correct AM/PM alarm time. The PM indicator appears on the left of the display.
3. Press the **Alarm 2 Button** to confirm the alarm hour setting. The minutes will flash.
4. Press the **-** or **+** Buttons to adjust the alarm minutes to the desired setting.
5. Press the **Alarm 2 Button** to confirm the alarm time setting. The red indicator next to Buzzer will flash.
6. Press the **-** or **+** Buttons to select the desired wake to alarm source: buzzer or FM radio.
7. Press the **Alarm 2 Button** to confirm the alarm settings and exit alarm setting mode. 2 beeps will confirm clock setting is complete. The alarm indicator will remain on the display, showing the alarm is armed.

Previewing Alarms and Turning Alarms On/Off

Quickly press and release an **Alarm Button** to view the current alarm time and wake source. Press again to turn the alarm OFF, indicated by the red AL1 or AL2 alarm indicator disappearing from the display.

Using the Si-B62

Snooze/Dimmer Button

1. While the alarm is sounding, press and release the **Snooze/Dimmer Button** to temporarily silence the alarm for 9 minutes. Snooze can be used several times during alarm.
2. To adjust the brightness of the display from high to low, press and release the **Snooze/Dimmer Button** during normal operation (when no alarm is sounding).

Sleep Mode

This unit allows you to sleep or nap to the current sound source.

When unit power on to set Sleep time press and release the **Sleep Button** as needed to cycle to the desired sleep duration: 120, 90, 60, 45, 30, 15, 10 minutes or OFF (turns the sleep mode off).

Using the Si-B62

Using Bluetooth Pairing Your Device

1. Turn on your Bluetooth-enabled device and turn on Bluetooth capability as described in the device's user manual.
2. Press and release the **Power/Mode Button** as needed until "bt" appears on the display and the red indicator next to the Bluetooth icon flashes.
3. Press and hold the **Pairing Button** until bt flashes on the display and a beep sounds, indicating pairing attempt. "HelloKittySi-B62" should appear on your device's menu. If "Not Paired", "Not Connected" or similar message appears, select "HelloKittySi-B62" on the device to connect it. If your device asks for a password, enter **1234** on the keyboard of your device. If no device is paired within 3 minutes, and the unit will revert to its previous mode. To retry pairing, turn the unit OFF then back ON, then follow step 3 again.
4. Once paired with a device, the **Bluetooth** indicator on the display will appear solid as BT music playing and the BT indicator will appear 1 flash/5 sec as no BT music playing. On some devices, you must then select "Use as Audio Device" or similar on the device's Bluetooth menu. Once paired, your device should link to the Si-B62 whenever within range (about 30 feet).

Pairing with a Different Device

When you power ON the unit, it will automatically link with the previously paired Bluetooth device as long as that device is still within range (about 30 feet). To pair with a different device follow steps 1-2.

Using the Si-B62

Playing Audio Via Bluetooth

1. Press and release the **Power/Mode Button** as needed until the Bluetooth indicator icon appears on the display.
2. Adjust the volume output on your device to at least 50%. Press the **Bluetooth Button** on the unit to play audio from your linked Bluetooth device.
3. Press the **Volume Up** or **Volume Down** Buttons to adjust the volume on the unit.
4. When done listening, press and hold the **Power/Mode Button** to turn the unit off.

Playing Audio via Aux-In

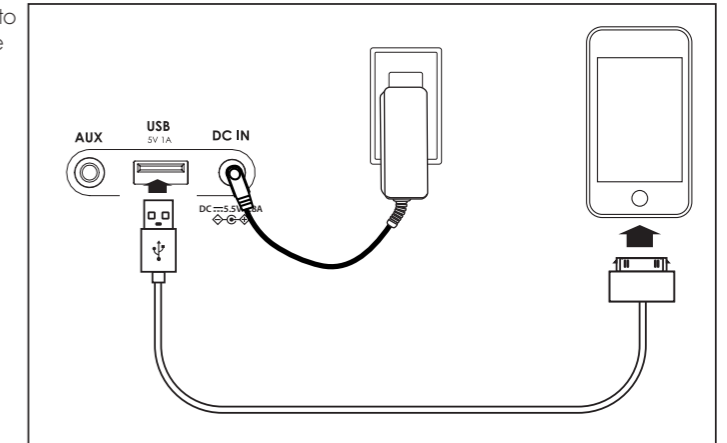
1. Connect one end of the included standard stereo 3.5mm audio cable into the aux-in jack on the back of the unit and the other end into the headphone or output jack of your audio device.
2. Press and release the **Power/Mode Button** as needed until the AUX indicator icon appears on the display.
3. Power on your device and place in play mode. Adjust the volume output on the device to at least 50%.
4. Press the **Volume Up** or **Volume Down** Buttons to adjust the volume on the unit.
5. When done listening, press and hold the **Power/Mode Button** to turn the unit off. Remember to turn off your audio device, too.

Using the Si-B62

Charging Devices via USB Port

1. Connect the standard size end of a USB cable (not included) to the USB Port on back of the unit and connect the other end to the charging port on your device.
2. Monitor the charging on your device. Some devices use a proprietary charging method and will not charge using the USB Port. If this happens, you must charge your device using the charger that came with it.

NOTE: unit must be plugged into working outlet to charge devices



Troubleshooting

Unit doesn't respond

- Check that all connections are correct and properly plugged in.
- Only use the AC adaptor that came with the unit
- Make sure your device is properly paired with the Si-B62.
- Make sure the **Power** is ON.

Unit doesn't respond (locked up or frozen)

- The unit may need to be reset. To do so, unplug the unit from power source and remove the ~~backup batteries. Let unit stand for 2 minutes. Reinstall backup batteries and connect unit to power source.~~ You will need to reset the clock, radio, and any other settings.

Trouble pairing device with Si-B62

Bluetooth implementation varies depending on your device's hardware and operating system. Please see www.ihome.com/support for updates on pairing.

- When you power ON the unit, it will automatically link with the last previously paired Bluetooth device if the device is still within range (about 30 feet). When device is out of range, the Bluetooth icon will appear for 2 minutes as the unit attempts to relink. To pair with a different device you must turn off Bluetooth capability on the already paired device, or take it out of range.
- Make sure your device is working properly. Check your device's manual for details on Bluetooth pairing and linking.

For further information and to see the latest instructions, visit www.ihome.com/support

Consumer Product Safety Guide

IMPORTANT SAFETY INSTRUCTIONS

When used in the directed manner, this unit has been designed and manufactured to ensure your personal safety. However, improper use can result in potential electrical shock or fire hazards. Please read all safety and operating instructions carefully before installation and use, and keep these instructions handy for future reference. Take special note of all warnings listed in these instructions and on the unit.

1. **Water and Moisture** – The unit should not be used near water. For example: near a bathtub, washbowl, kitchen sink, laundry tub, swimming pool or in a wet basement.
2. **Ventilation** – The unit should be situated so that its location or position does not interfere with its proper ventilation. For example, it should not be situated on a bed, sofa, rug or similar surface that may block ventilation openings. Also, it should not be placed in a built-in installation, such as a bookcase or cabinet, which may impede the flow of air through the ventilation openings.
3. **Heat** – The unit should be situated away from heat sources such as radiators, heat registers, stoves or other appliances (including amplifiers) that produce heat.
4. **Power Sources** – The unit should be connected to a power supply only of the type described in the operating instructions or as marked on the appliance. Only use the AC adapter that came with the unit.
5. **Power-Cable Protection** – Power supply cables should be routed so that they are not likely to be walked on or pinched by items placed upon or against them. It is always best to have a clear area from where the cable exits the unit to where it is plugged into an AC socket.
6. **Cleaning** – The unit should be cleaned only using a warm damp cloth. Do not use solvents, etc.
7. **Objects and Liquid Entry** – Care should be taken so that objects do not fall and liquids are not spilled into any openings or vents located on the product.
8. **Attachments** – Do not use attachments not recommended by the product manufacturer.
9. **Lightning and Power Surge Protection** – Unplug the unit from the wall socket and disconnect the antenna or cable system during a lightning storm or when it is left unattended and unused for long periods of time. This will prevent damage to the product due to lightning and power-line surges.
10. **Overloading** – Do not overload wall sockets, extension cords, or integral convenience receptacles as this can result in a risk of fire or electric shock.
11. **Damage Requiring Service** – The unit should be serviced by qualified service personnel when:
 - A. the power supply cable or plug has been damaged.
 - B. objects have fallen into or liquid has been spilled into the enclosure.
 - C. the unit has been exposed to rain.
 - D. the unit has been dropped or the enclosure damaged.
 - E. the unit exhibits a marked change in performance or does not operate normally.
12. **Periods of Nonuse** – If the unit is to be left unused for an extended period of time, such as a month or longer, the backup batteries should be removed from the unit to prevent damage or corrosion.
13. **Servicing** – The user should not attempt to service the unit beyond those methods described in the user's operating instructions. Service methods not covered in the operating instructions should be referred to qualified service personnel.

Questions? Visit www.ihome.com
or call 1-800-288-2792 Toll Free

Limited 1 Year Warranty

iHome Products, a division of SDI Technologies Inc. (hereafter referred to as SDI), warrants this product to be free from defects in workmanship and materials, under normal use and conditions, for a period of one (1) year from the date of original purchase.

Should this product fail to function in a satisfactory manner, it is best to first return it to the store where it was originally purchased. Should this fail to resolve the matter and service still be required by reason of any defect or malfunction during the warranty period, SDI will repair or, at its discretion, replace this product without charge. This decision is subject to verification of the defect or malfunction upon delivery of this product to the Factory Service Center authorized by SDI Customer Service. The product must include proof of purchase, including date of purchase. An out-of-warranty fee for service will be charged for units that are received without proof of purchase.

Before returning this product for service, please first replace the batteries (if applicable) with fresh ones, as exhausted or defective batteries are the most common cause of problems encountered.

If service is still required:

1. Call SDI Customer Service at 1-800-288-2792 for Return Authorization and for the address of the Factory Service Center.
2. Remove the batteries (if applicable) and pack the unit in a well padded, heavy corrugated box. SDI is not responsible for damage that occurs during shipping to the Factory Service Center.
3. Enclose a photocopy of your sales receipt, credit card statement, or other proof of the date of purchase, if within the warranty period. Also include your name and address information, a brief description for why the unit is being returned, and the return authorization number. No unit can be processed without a return authorization number.
4. Write the return authorization number on the side of the shipping package and send the unit prepaid and insured to the Factory Service Center address authorized by SDI Customer Service.

Disclaimer of Warranty

NOTE: This warranty is valid only if the product is used for the purpose for which it was designed. It does not cover (i) products which have been damaged by negligence or willful actions, misuse or accident, or which have been modified or repaired by unauthorized persons; (ii) cracked or broken cabinets, or units damaged by excessive heat; (iii) damage to digital media players, CD's or tape cassettes (if applicable); (iv) the cost of shipping this product to the Factory Service Center and its return to the owner.

This warranty is valid only in the United States of America and does not extend to owners of the product other than to the original purchaser.

In no event will SDI or any of its affiliates, contractors, resellers, their officers, directors, shareholders, members or agents be liable to you or any third party for any consequential or incidental damages, any lost profits, actual, exemplary or punitive damages. (Some states do not allow limitations on implied warranties or exclusion of consequential damages, so these restrictions may not apply to you.) This warranty gives you specific legal rights, and you may also have other rights which vary from state to state.

Your acknowledgment and agreement to fully and completely abide by the above mentioned disclaimer of warranty is contractually binding to you upon your transfer of currency (money order, cashier's check, or credit card) for purchase of your SDI product.

© 2014 SDI Technologies, Inc. All rights reserved
Questions? Visit www.ihome.com
or call 1-800-288-2792 Toll Free

SiB62 - 140429 - A

Printed in China