

## iTrip AutoPilot User Guide

Thanks for purchasing Griffin Technology's iTrip AutoPilot with SmartScan. iTrip AutoPilot combines our popular iTrip FM transmitter unit with an innovative power and control unit to create the ultimate in-car solution for playing your iPod or iPhone. And SmartScan technology performs the setup for you, automatically.

### Quick Start

1. Plug iTrip into the dock connector of your iPod or iPhone, and plug iTrip's AutoPilot power/control plug into your car's 12 volt power socket or cigarette lighter.
2. Use SmartScan to find the best frequency for iTrip to work with your car radio: Press FUNCTION → SCAN. iTrip's SmartScan technology finds the 3 clearest FM frequencies and stores them in iTrip's presets, and shows the best one on iTrip's display. It takes a few seconds to complete the scan.
3. Your iTrip will default to the first preset.
4. If you want to change between presets, Press FUNCTION → PRESET → Select the frequency.
5. Tune your FM radio to the same frequency that's showing on iTrip's display.

You're now ready to enjoy the music from your iPod or iPhone through your car stereo.

### Controlling your iPod

iTrip's AutoPilot controls give you the tactile feedback that enables you to control your music without taking your eyes off the road. Use the AutoPilot power plug to control the Play/Pause and transport functions of your iPod or iPhone:

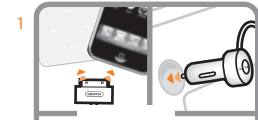
- ▶▶▶ Press to play or pause
- ▶▶▶▶ Press to skip to the next track, or Press and Hold to scan through the current track
- ◀◀◀ Press to start the current track over; Press repeatedly to skip back through previously-played tracks; Press and Hold to scan back through the current track.

### Using Other Frequencies

In areas with lots of overlapping FM stations crowding the dial, you may need to choose a different frequency for iTrip.

To choose from your Presets:

1. Press FUNCTION → PRESET. Select any of the 3 saved frequencies. (iTrip will exit this menu automatically after about 3 seconds.)
2. Tune your car radio to the new frequency displayed on iTrip's screen.



### To Tune Manually

1. Tune your car radio to a frequency at which you hear nothing but static. The ideal choice would be a frequency with nothing on either of its neighboring frequencies.
2. Press iTrip's ▲ or ▼ buttons to display the same frequency as your radio. Holding down the ▲ and ▼ buttons moves through them quickly.

### Setting your own presets

If you have three favorite frequencies that you want to be able to recall quickly, you can manually save them to iTrip's Presets:

1. Use the ▲ and ▼ buttons to show the desired frequency on iTrip's display.
2. Press FUNCTION → PRESET (iTrip will automatically exit this menu after about 3 seconds.)
3. Press and Hold one of the three PRESET buttons for 2 seconds. The screen will blink once indicating the preset has been saved successfully.

### Listen

iTrip uses SmartSound™ to optimize both the transmission strength and the sound from your iPod or iPhone to your FM radio. Depending on what you're listening to, you may want to switch between stereo and mono sound. Here's how:

Press FUNCTION → MODE → MONO (Broadcasts in mono, resulting in a stronger signal than stereo.)

▶ Use for podcasts, spoken-word and audio books.

▶ Use for a clearer signal in heavily populated areas where numerous FM stations crowd the dial.

Press FUNCTION → MODE → STEREO (Broadcasts in stereo, for more realistic audio.)

▶ Use for music and musical podcasts.

▶ Use for best possible Right/Left Channel stereo separation and more natural sound.

Press SMARTSOUND to toggle on or off the SmartSound™ function.

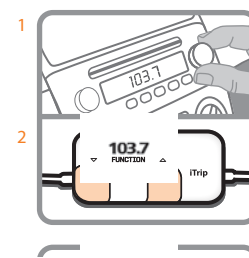
### Charge Indicator

iTrip's AutoPilot power plug is busy charging your player's battery as you listen. AutoPilot visually indicates battery charging status by means of a 3-color light ring:

Red light is on: AutoPilot is plugged in and receiving power, ready to start charging.

Amber light is slowly pulsing: AutoPilot is charging your player as it provides power to iTrip.

Green light is on: Your player is fully charged, and AutoPilot is providing power to iTrip.



### Track Controls

In some cars, the power socket is not within convenient reach of the driver. For this reason, iTrip AutoPilot gives you track control from the faceplate of your iTrip FM transmitter. To use the track controls:

1. Press FUNCTION.
2. Press Mode.
3. Press and release the center button (the Griffin logo is highlighted).

You'll see familiar track controls appear on the iTrip faceplate in about 3 seconds. Now you can use iTrip AutoPilot as a handy wired remote control for your iPod or iPhone.

### Important Info about Using iTrip with iPhone:

You may want to temporarily disconnect iTrip's cable when using your iPhone in phone mode, or you may consider the use of a Bluetooth earpiece for safety and convenience while driving.

The ringer switch on your iPhone works the same way with iTrip as it always does. To avoid missing calls, make sure you understand how the ringer switch works:

Ringer Switch on: You will hear the ringtone through your speakers or headphones.

Ringer Switch off: You will not hear any ringtone.

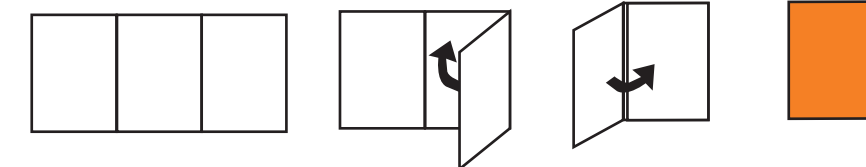
If you have music playing when making or accepting a call, your iPhone will fade the music out. When you end your call, the music will resume. If necessary, reconnect iTrip to your iPhone.

This information reflects iPhone firmware version 1.1.1. changes, if any, as a result of firmware updates will be posted on our website. Visit [www.goITrip.com](http://www.goITrip.com) for information on everything iTrip.

### Troubleshooting

Problems? No problem. Check these tips for a quick fix:

- ◻ FM Radio
  1. Is it on?
  2. Is it tuned to unused frequency?
  3. Is the radio volume adjusted?
- ◻ iTrip
  1. Has iTrip gone in low power mode? iTrip goes in a power-saving mode after an extended period of no music. To get the music going again, just press Play on your iPod, or disconnect and reconnect iTrip to your iPod.
  2. Are iTrip and the radio tuned to matching frequencies?



- ◻ iPod
  1. Is the Hold switch on?
  2. Is the Play Button depressed?
  3. Is the battery completely drained? If so, allow the battery to recharge for a few short minutes so that your iPod will sense a constant current.

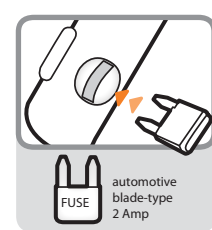
- ◻ Fuses
  1. Check your car's cigarette lighter fuse. (Consult your car's owners manual for fuse locations and specifications.)
  2. Check iTrip AutoPilot's fuse. iTrip protects your equipment with a replaceable auto-mobile-type fuse located inside the AutoPilot power plug. Replace with a blade-type mini-fuse (sometimes called an ATM fuse) rated at 2 amps, obtainable at any automotive supply store.

Call Griffin's Customer Support at 800-208-5996.  
Monday – Thursday 9 am – 6 pm and Friday 9am – 5pm Central time.

### Technical Specifications

iTrip is built for iPod models that use the 30-pin dock connector.

- ▶ Transmitter dimensions: 2.2" x .43" x 1.02" (58mm x 11mm x 26mm)
- ▶ Total length 44.5" (115.6cm)
- ▶ Weight: 2.2 oz. (US) (63 g)
- ▶ Antenna: Built-in
- ▶ Power: provided by auto cigarette lighter or 12 V accessory socket (no additional batteries required)
- ▶ Input voltage range: 12 – 16 VDC
- ▶ Maximum current: 2 amperes
- ▶ Output voltage: 5.2 VDC at 1 ampere
- ▶ Fuse type: 2 ampere blade-type automotive (ATM) fuse
- ▶ Modulation: FM Stereo
- ▶ Available output RF ranges (region preset at factory):
  - U.S.: 88.1MHz ~ 107.9 MHz
  - Japan: 76.0 MHz ~ 90.0 MHz
  - Other Countries: 88.0 MHz ~ 108.0 MHz
- ▶ Radio Frequency Adjustment Increments:
  - Japan: 0.1 MHz per step
  - U.S.A. and Other Countries: 0.2 MHz per step
- ▶ Radio Frequency Response: 50 Hz ~ 15 kHz
- ▶ Operating Range: 10 – 30' (3m - 9.1m)



**GRIFFIN**

This device complies with Part 15 of the FCC Rules and RSS-210 of the Industry Canada Rules. Operation is subject to the following two conditions: (1) this device may not cause harmful interference, and (2) this device must accept any interference received, including interference that may cause undesired operation. The manufacturer is not responsible for any radio or tv interference caused by unauthorized modifications to this equipment. Such modifications could void the user's authority to operate the equipment.

**1 YEAR WARRANTY** Warranty details at [www.griffintechnology.com/support/](http://www.griffintechnology.com/support/)

We stand behind our products with the industry's best customer service, backed by a simple, fair warranty. Using this product signifies your acceptance of the terms of the warranty, so please read our warranty details at [www.griffintechnology.com/support/](http://www.griffintechnology.com/support/) before using your Griffin product.

© 2008 Griffin Technology, Inc. - [www.griffintechnology.com](http://www.griffintechnology.com) - AutoPilot and SmartScan are trademarks of Griffin Technology, Inc. - iTrip is a registered trademark of Griffin Technology, Inc. - iPod is a trademark of Apple Inc., registered in the U.S. and other countries. - iPhone is a trademark of Apple Inc. - Patents pending - Made in PRC - Designed in Tennessee. Please recycle this package. Thank!

iTrip AutoPilot

GRIFFIN

iTrip AutoPilot

GRIFFIN