

iTrip Auto  
user guide

GRIFFIN

iTrip Auto  
user guide

GRIFFIN

## iTrip Auto User Guide

Thank you for purchasing iTrip Auto, the easy way to listen to your iPod through your car's FM radio. iTrip Auto gets its power from your car's cigarette lighter or 12 volt accessory socket, and charges your iPod as you listen.

iTrip is an FM transmitter for iPod. It works by broadcasting your music wirelessly to your car's FM radio, allowing you to listen through your stereo speakers. iTrip setup and operation is an easy 3-step process. Here's how to get started:

### Quick Setup Using SmartScan

1. Plug iTrip into your player's dock connector and begin playing some music (though you won't hear anything yet). Plug iTrip's power adapter into your car's cigarette lighter or 12 volt accessory socket.
2. Press iTrip's SmartScan button. In only a few seconds, SmartScan finds an available FM frequency for you.
3. Tune your FM radio to the same frequency, now showing on iTrip's display.

### How To Set iTrip Manually

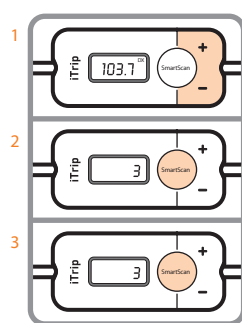
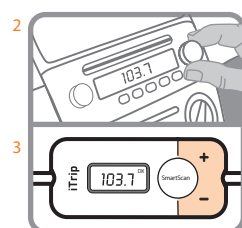
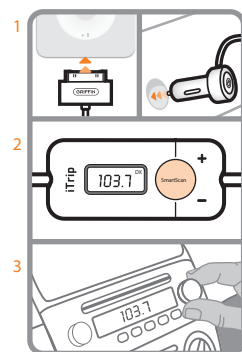
1. Plug iTrip into your iPod and your car's power socket and begin playing music, as in Quick Setup.
2. Tune your FM radio to a frequency at which you hear nothing but static. An ideal choice would be one with static on either neighboring frequency.
3. Use iTrip's + and - buttons to tune it to the same frequency as your radio. (You can press and hold the buttons to scan through the frequencies quickly.) When you reach the desired frequency, release the button and iTrip will lock into that frequency automatically.

Your music will now be playing through your speakers. Set your radio's volume controls to a comfortable listening level.

### Using iTrip Auto's Presets

You can save the best frequencies as presets for easy recall.

1. Tune iTrip Auto to the frequency you want to save.
2. Press and hold the SmartScan button until a preset number begins to flash (1, 2, 3, or 4 on the iTrip display).
3. Select the desired preset location (1, 2, 3, or 4) by pressing the + or - buttons repeatedly. When the screen shows the desired number, press the SmartScan button again and hold it for 3 seconds. iTrip has now saved the current frequency to this preset number.



To recall a preset:

1. Press and hold the SmartScan button until a preset number begins to flash.
2. Use iTrip's + and - buttons to select the desired number.
3. When the desired number is showing on iTrip's display, press the SmartScan button again, or just wait 3 seconds and iTrip will switch to the current preset.

### LX/DX Mode for Best Sound

iTrip lets you switch between LX (Stereo) and DX (Mono) modes. In general, Mono mode produces a stronger signal, better able to cut through in populated areas where lots of radio stations crowd the dial. Since audio content such as audio books and spoken word will sound much the same in either stereo or mono, you may choose to listen in mono. To switch between stereo and mono:

1. Press and hold iTrip's + and - buttons until you see LX or DX begin to blink in iTrip's display (approximately 8 seconds).
2. Select LX or DX by pressing the + or - buttons. Then wait 2 seconds and iTrip will begin operating in the mode you have chosen.

### Power Switch

For cars that do not automatically shut off power to the 12 volt accessory sockets, iTrip Auto includes a power switch on the power plug. Press the switch to turn off power to iTrip and to your player.

### Troubleshooting

Problems? No problem. Here's what to do:

#### FM Radio

- Is it on?
- Is it tuned to an open, unused frequency?
- Is its volume correctly adjusted?

#### iPod

- Is its Hold Switch on?
- Have you pressed Play?

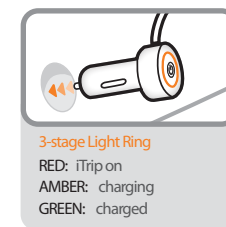
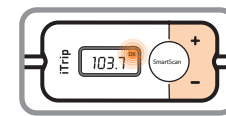
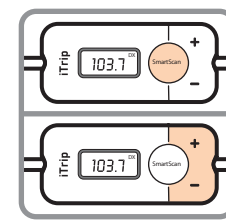
#### iTrip

- Is it fully connected with your iPod?

Is it tuned to the same frequency showing on your radio?

Is it in Automatic Shutoff mode? If iTrip experiences an extended period of quiet or silence, it could go into low power mode. To wake it back up, restart music on your iPod, or disconnect and re-connect your iTrip from the power outlet.

Is the Power Switch off? The round button on iTrip's power adapter knob is a power switch that allows you to shut down both iTrip and the connected iPod; useful in cars that do not automatically shut off power to their cigarette lighter or accessory socket when the car ignition is turned off.



### Fuses

Check your car's fuse (consult your owner's manual for the fuse location) and replace if necessary. Most cars use a replaceable fuse to protect the cigarette lighter or accessory circuits.

iTrip is protected against power surges by means of an automatic circuit-breaker, or "smart fuse." If you are certain that iTrip is receiving power through your 12 volt socket but refuses to power on, unplug iTrip from your 12 volt socket and wait 15 seconds. This resets iTrip's smart fuse.

Problem's not solved?

No problem. Call Griffin's Customer Support at 800-208-5996, Monday - Thursday 9 am - 6 pm and Friday 9am - 5pm Central time.

Your call will be answered by real human beings who actually know and use Griffin products.

[www.griffintechology.com/support/](http://www.griffintechology.com/support/)

### Technical Specifications

iTrip works with iPod models from 4th generation and up.

▲ Dimensions: .47" (12mm) x 1.10" (28mm) x 2.6" (66mm)

▲ Total length including cable: 40" (100cm)

▲ Weight: 2 oz. (56g)

▲ Antenna: Built-in

▲ Modulation: FM Stereo

▲ Available output RF ranges (region preset at factory):

U.S.: 88.1 MHz ± 107.9 MHz

Japan: 76.0 MHz ± 90.0 MHz

Other Countries: 88.0 MHz ± 108.0 MHz

▲ Radio Frequency Adjustment Increments:

Japan: 0.1 MHz per step

U.S. and Other Countries: 0.2 MHz per step

▲ Radio Frequency Response: 50 Hz ± 15 KHz

▲ Operating Range: 10 - 30ft (3 - 9.1m)

▲ Power: Provided by 12 Volt cigarette lighter/accessory socket (no batteries required)

▲ Fuse Type: resettable internal fuse

GRIFFIN

This device complies with Part 15 of the FCC Rules and RSS-210 of the Industry Canada rules. Operation is subject to the following two conditions: (1) this device may not cause harmful interference, and (2) this device must accept any interference received, including interference that may cause undesired operation. The manufacturer is not responsible for any radio or tv interference caused by unauthorized modifications to this equipment. Such modifications could void the user's authority to operate the equipment.

Cet appareil respecte la section 15 des règlements FCC et la norme RSS-210 d'Industrie Canada. Le fonctionnement de l'appareil est soumis aux deux conditions ci-dessous: (1) Cet appareil ne peut provoquer aucune interférence nuisible et (2) cet appareil doit accepter toute interférence reçue, y compris les interférences susceptibles de provoquer un fonctionnement indésirable. Le fabricant ne peut être tenu responsable des interférences radio ou télévisuelles causées par des modifications non autorisées de ce matériel. Toute modification non autorisée est susceptible de rendre nul le droit de l'utilisateur à user de ce matériel.



1 YEAR WARRANTY Warranty details at [www.griffintechology.com/support/](http://www.griffintechology.com/support/)

We stand behind every product with the industry's best customer service, backed by a simple, fair warranty. Using this product signifies your acceptance of the terms of the warranty, so please read our warranty details at [www.griffintechology.com/support/](http://www.griffintechology.com/support/) before using this Griffin product.

© 2008 Griffin Technology, Inc. - [www.griffintechology.com](http://www.griffintechology.com) - iTrip is a registered trademark of Griffin Technology, Inc. - SmartScan is a trademark of Griffin Technology, Inc. iPod is a trademark of Apple, Inc., registered in the U.S. and other countries - Patent Pending - Made in PRC - Designed in Tennessee Please recycle this package. Thank!

