



# **DVR SYSTEM**

# **User's Manual**

Manual Revision : Version 3.0  
Release Date : Aug. 30, 2003

■ **SERVER**  
■ **CLIENT**

---

## **INFORMATION TO THE USER (Part 15.105(b))**

### **INFORMATION TO THE USER**

This equipment has been tested and found to comply with the limits for a Class B digital device, pursuant to part 15 of the FCC Rules. These limits are designed to provide reasonable protection against harmful interference in a residential installation. This equipment generates, uses and can radiate radio frequency energy and, if not installed and used in accordance with the instructions, may cause harmful interference to radio communications. However, there is no guarantee that interference will not occur in a particular installation. If this equipment does cause harmful interference to radio or television reception, which can be determined by turning the equipment off and on, the user is encouraged to try to correct the interference by one more of the following measures:

- Reorient or relocate the receiving antenna.
- Increase the separation between the equipment and receiver.
- Connect the equipment into an outlet on a circuit different from that to which the receiver is connected.
- Consult the dealer or an experienced radio/TV technician for help.

### **WARNING (Part 15.21)**

The manufacturer is not responsible for any Radio or TV interference caused by unauthorized modifications to this equipment. Such modifications could void the user's authority to operate the equipment.”

## DVR User's Manual

### 1. DVR Sever

#### 1-1. Display Mode

Main screen

Pan/Tilt Control

#### 1-2. Setup Mode

Standard Setup

Recoding Setup

Schedule setup

Motion Detection Setup

Color Setup

PAN/TILT Setup

Network Setup

Backup Setup

#### 1-3. Search Mode

Search screen

Data Back up

Search Data & Time

Print

### 2. Client program



# **1. DVR SERVER**

## **1-1. Display mode**

## DISPLAY Mode



### A . Camera Number/recording state

( [ ] : Camera No. / [ ] : Recording / [ ] : Motion / [ ] : Sensor )

### B . Display present images

### C. Select screen division among 1/4/6/7/8/9/10/13/16Ch.

### D. Auto switching (Rotation) : Displays switching images by 1Ch./4Ch./8Ch. in sequence with selected time interval.

### E. Select camera No.

### F . Go to 'SETUP' Mode.

### G . Go to 'SEARCH' Mode.

### H. Power

When you click the Power button, DVR system will be shut down.

When you want to go Window mode, Please go to Setup.

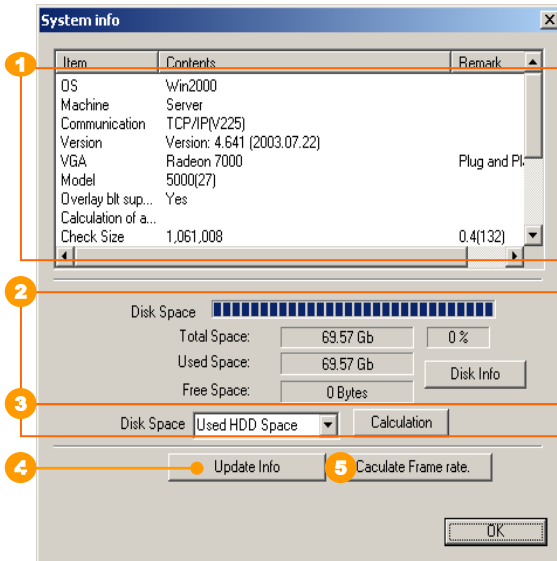
(But, Do not use this function except only unavoidable situation for the system.)

### I . TIME : Display current time.

## 감시 모드

J

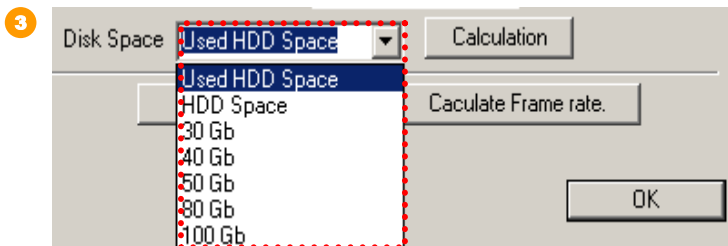
### SYSTEM-INFO



1 Display information of System

For example, VGA card, OS, network communication state etc.

2 Capacity of HDD



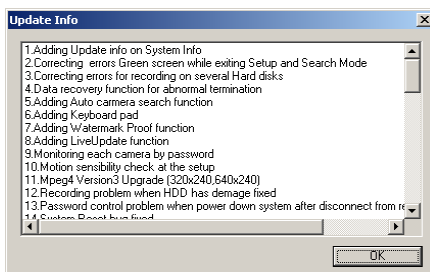
Calculate used HDD space of current setting.

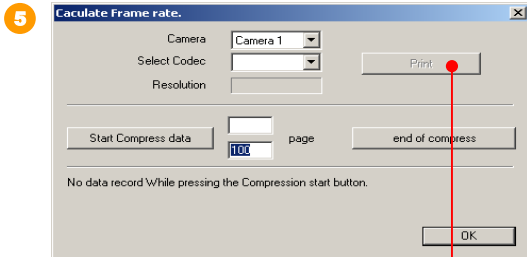
Used HDD space is very changeable by setup of channel, recording method, compressor, image size etc.

So, you can calculate used HDD space by this function.

Also, If you specified HDD space, you can calculate used HDD space.

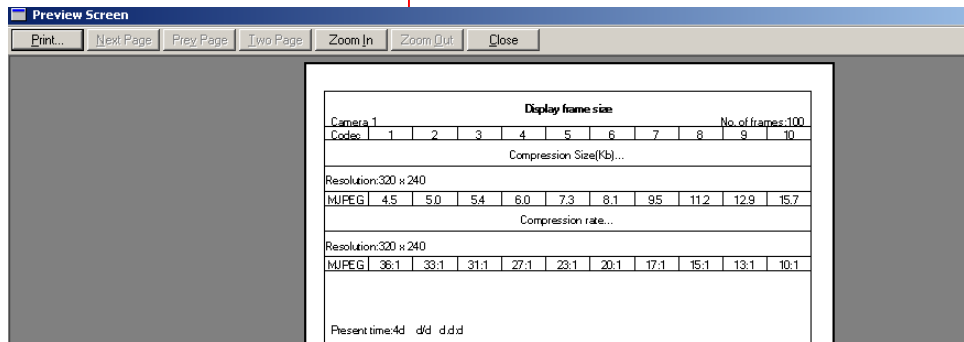
4 UPDATE information – Information of adding function & bug fix, etc.





Printed calculated frame result by each CODEC.

**!** No data record during compression test.



When you click the Power button, DVR system will be shut down.

When you want to go Window mode, Please go to Setup.



K

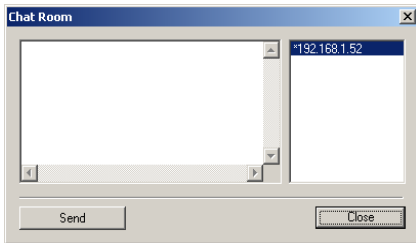
### PREVIEW



Display present recording images.

- This function is only our product's special feature. You can know present compressed recording image by CODEC.

L

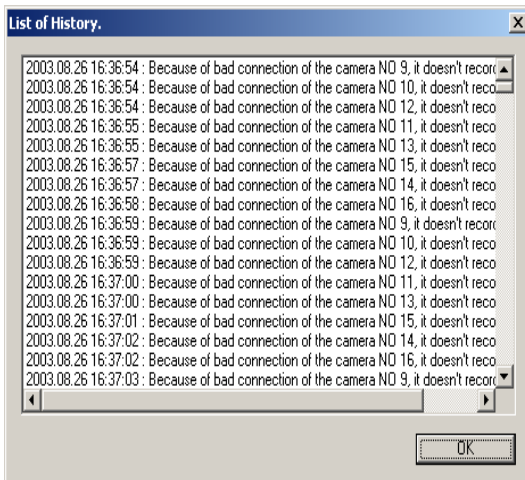


Real time chatting between SERVER and CLIENT.

If you connect with several user, you can choose just one user and then send message to one user.

M

### HISTORY

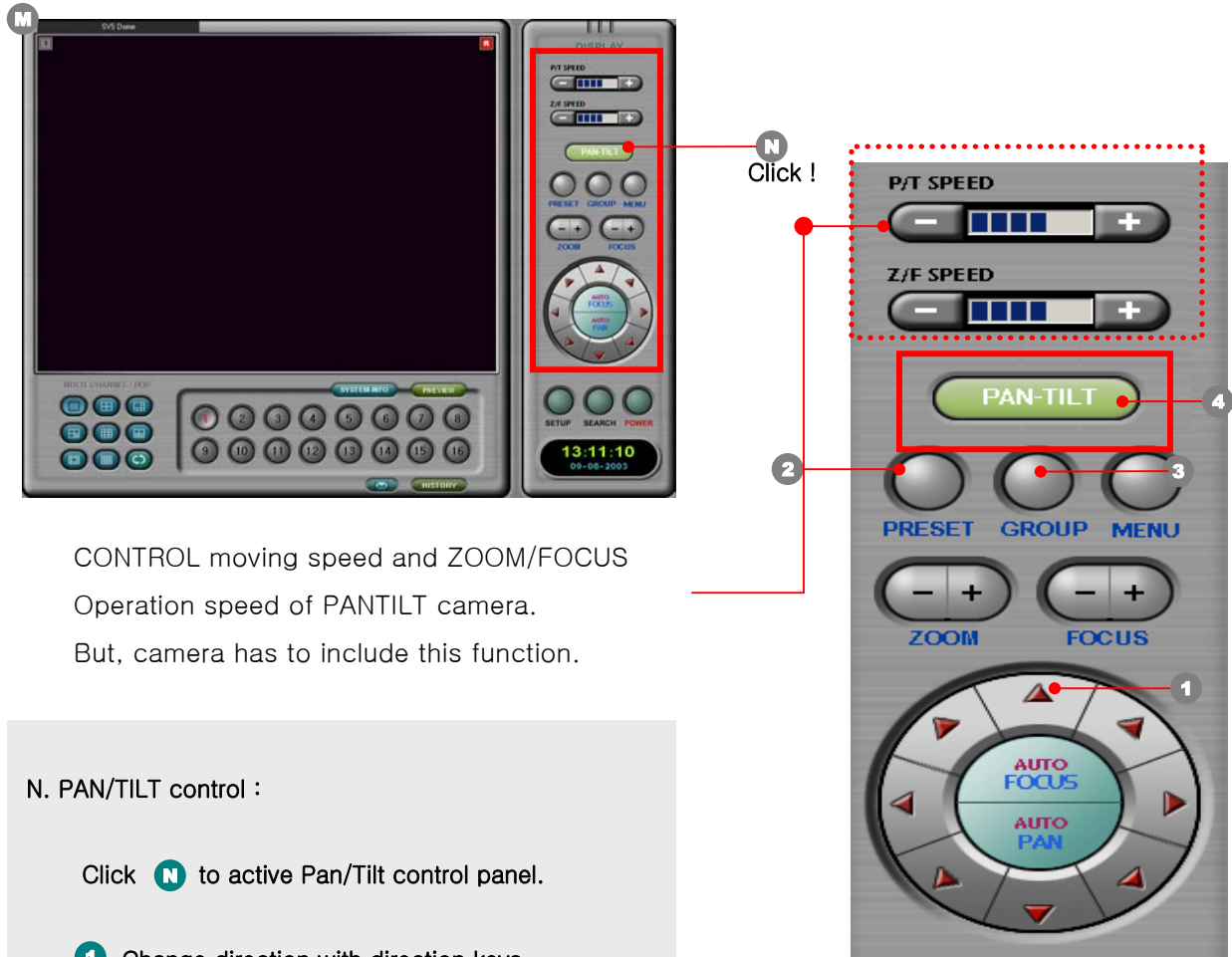


Record history of DVR SERVER.

You can know working history and Connect history from outside



## PAN/TILT Control



CONTROL moving speed and ZOOM/FOCUS  
Operation speed of PANTILT camera.  
But, camera has to include this function.

### N. PAN/TILT control :

Click **N** to active Pan/Tilt control panel.

- 1 Change direction with direction keys
- 2 ZOOM : Zoom In / Out.
- 3 Focus : Control Focus.
- 4 Speed dome control ( Refer the next page)

**!** Some camera has no P/T, Z/F & preset function.  
Please use, after check CAMERA MAKER about this function supporting.

## DISPLAY Mode

### 4 Speed dome control

1.



Camera No

CTNCOM(HD-0670 v1.4)

\* Preset List :

- 01:
- 02:
- 03:
- 04:
- 05:
- 06:
- 07:
- 08:
- 09:
- 10:
- 11:

Show blank ID

Set Preset

1. Click Preset # in list box,  
and enter Preset ID

ID:

2.



### How to set Preset

1. Select **Preset No.** 1
2. Insert **Preset ID.** 2
3. Click 3 to save ID.
4. Select a desired place for preset by pan/tilt control panel.
5. Click 4 to add the preset.
6. Click to perform preset.
7. Click 7 to delete preset.

## DISPLAY Mode

2.



The screenshot shows the 'AUTO GROUP' control window. At the top, there is a 'Camera No' field with '01' and a 'Close' button. Below that is a text field containing 'CTNCOM(HD-0670 v1.4)'. A section labeled '\* Select Group :' contains a large empty list box. To its right are buttons for 'Group Run', 'Group Stop', 'Group Del', and 'Rename'. Below the list box are fields for 'Group #' (with a dropdown showing '01') and 'Group ID', followed by a 'Group Add' button. A section labeled '\* Preset List :' contains another large empty list box. To its right are buttons for 'Preset Delete', 'Preset Insert', and 'Preset Add'. Below the list boxes is a 'Select Preset:' dropdown showing '01:' and a 'Goto Preset' button. At the bottom, there is a 'Move Speed' slider with markers at 1 and 5, and a 'Dwell Time' field with '5 (sec)'. Numbered callouts (1-9) point to various elements: 1 to the Group # dropdown, 2 to the Group ID field, 3 to the Group Add button, 4 to the Select Group list box, 5 to the Select Preset dropdown, 6 to the Move Speed slider, 7 to the Dwell Time field, 8 to the Preset Insert button, and 9 to the Preset List box.

Close this Box

Run a Group

Stop a Group

Delete a Group

Rename a Group

Delete a Preset

Insert a Preset between lists

Add a Preset

## How to set a Group

1. Select Group No. **1**
2. Insert Group Name **2**
3. Click **3** to add Group List on **4**.
4. Select Preset No. **5**  
You can test preset by Click **Goto Preset** .
5. Select Moving time to next position. **6**
6. Enter Dwell time for the position. **7**
7. Repeat No.1~6 to add group.
8. Select a desired group on **4**  
and click **Group Run** to run a Group.
9. Click **Group Stop** to stop a Group.



SVS Dome

In case that more than one PTZ camera set up, when user clicks or operates keys of PANTILT, some camera which are operated will be displayed on screen.

If click this part, window for PANTILT setting will be open.

This function is convenient for users to operate several PANTILT in one DVR system.



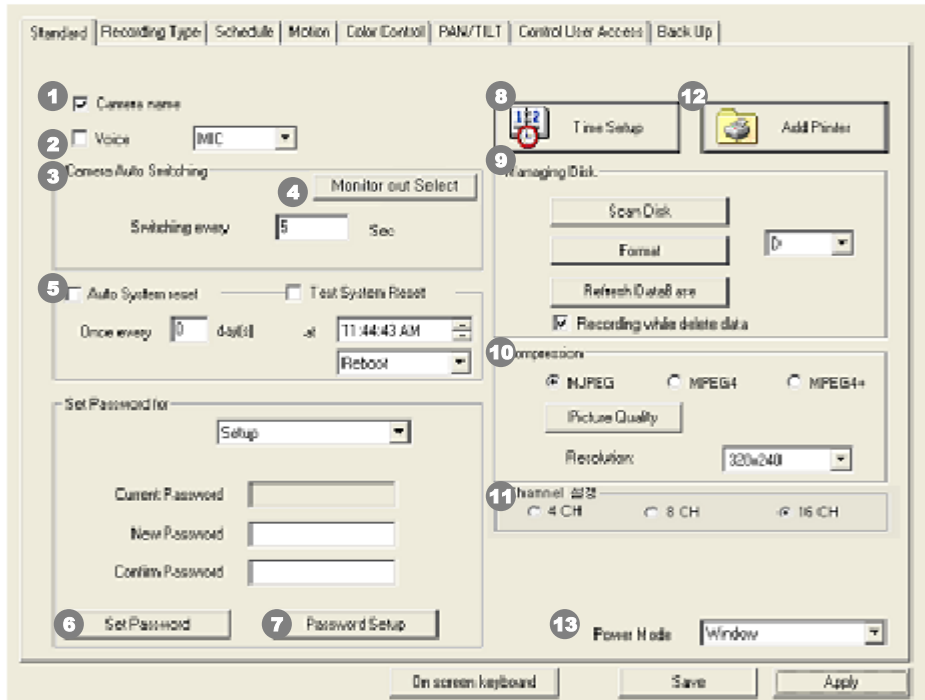
# **1. DVR SERVER**

## **1-2. Setup mode**

## STANDARD SETUP

- E**  go to "SETUP" mode

1. STANDARD setup : after system installation, setup as user's requires.



1. Camera name :  Check it to display camera name on screen.
2. Voice :  Check it for recording the voice



MIC -1CH : Check it for voice recording of channel no.1.

- 1) Connect to MIC IN.
- 2) Use after check box of Voice.

LINE : When use both communication between SERVER and CLIENT/

- 1) Connect to sound CARDLINE IN of SERVER SYSTEM
- 2) Use after check box of LINE

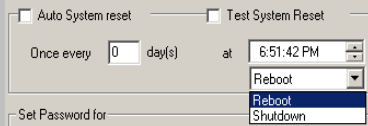


3. **Camera auto switching** : Select camera switching time (Default : 1sec)

4. **Monitor out select** : You can choose image of analog monitor among display images (Only for DF900,1000,1500 ,2400 )



5. **Auto system reset**: Setup a time interval for rebooting and shutdown the system.



**What is the watch Dog ?**

When system is unstable while monitoring, it automatically reboot the system.

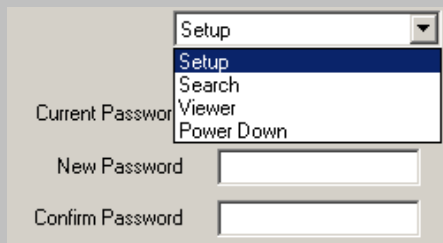
## STANDARD SETUP

### 6. Set password :

Enter new passwords for **Setup/Search/View/Power Down** mode.

- Setup** : Program "Setup"
- Search** : Program "Search"
- Viewer** : Start DVR
- Power Down** : Close DVR

Set Password



Current Password

New Password

Confirm Password

#### First setup

1. Select password among Setup, Search, Viewer, Power Down.
2. Insert password
3. Confirm password
4. Click "Set Password" and then, check message.

#### Delete

1. Insert current password
2. Do not insert "New Password" and "Confirm Password"
3. Click "Set Password"
4. Select delete message of pop up window.



## 7. Password setup

### Password Setup

Control USER right for DVR using.

The screenshot shows a 'Password Setup' window with the following structure:

1 Password Contents	2 1st Manager	2nd Manager
Recording Type	<input type="checkbox"/>	<input type="checkbox"/>
Motion	<input type="checkbox"/>	<input type="checkbox"/>
Control User Access	<input type="checkbox"/>	<input type="checkbox"/>
Search	<input type="checkbox"/>	<input type="checkbox"/>
Power	<input type="checkbox"/>	<input type="checkbox"/>
Standard	<input type="checkbox"/>	<input type="checkbox"/>
Schedule	<input type="checkbox"/>	<input type="checkbox"/>
Color Control	<input type="checkbox"/>	<input type="checkbox"/>
PAN/TILT	<input type="checkbox"/>	<input type="checkbox"/>
Back Up	<input type="checkbox"/>	<input type="checkbox"/>
Camera Select	<input type="button" value="Setup"/>	<input type="button" value="Setup"/>

3 Admin	1st Manager	2nd Manager
Before <input type="text"/>	Before <input type="text"/>	Before <input type="text"/>
After <input type="text"/>	After <input type="text"/>	After <input type="text"/>
Confirm <input type="text"/>	Confirm <input type="text"/>	Confirm <input type="text"/>
<input type="button" value="Setup"/>	<input type="button" value="Setup"/>	<input type="button" value="Setup"/>

- 1 If you permit right of secondary and third administrator that you have to setup primary administrator password.
- 2 Select desired contents for each manager.
- 3 After check, setup password.

Admin : all functions available

Set 1<sup>st</sup> Manger and 2<sup>nd</sup> Manger up for your desired function.

8. Time setup :

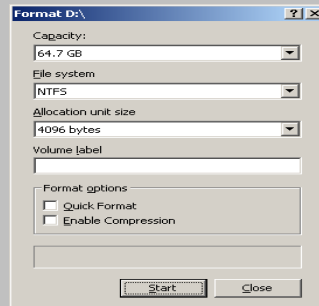
Setup time of system.

9. Save disk :

Scandisk :  
Check DISK in DOS MODE



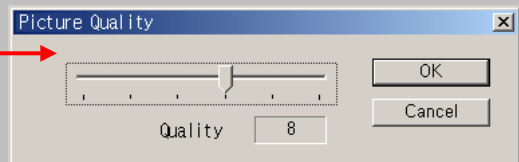
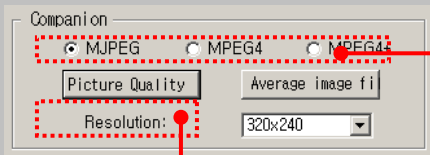
Format : Format data



10. Companion : Select compression method

When decrease picture quality, the size of image decrease.

You can see more frames in Remote Access.



- Resolution : Information of current picture quality

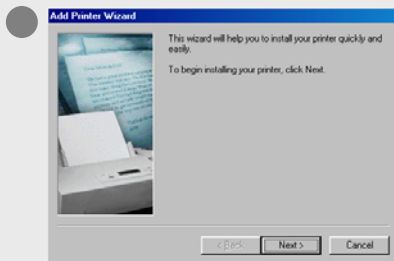
11. Setup Channel : If user wants to extend more than 4ch that user selects desired channel

(Only for model DF-1000, 1500, 2000)

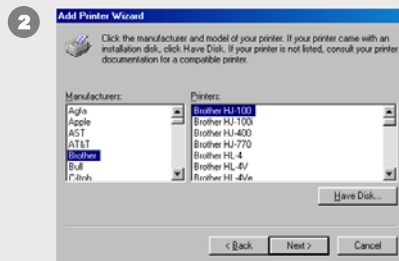
## STANDARD SETUP

### 1-3. STANDARD Setup

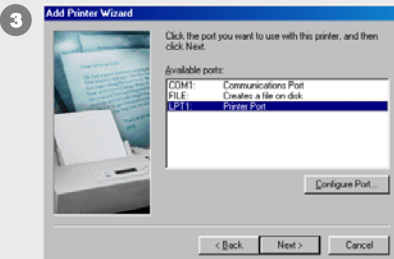
#### 11. Add Printer : Add printer as user's require.



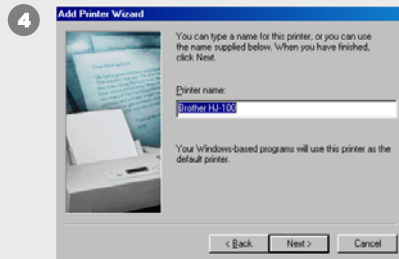
☞ Click ! **Next**



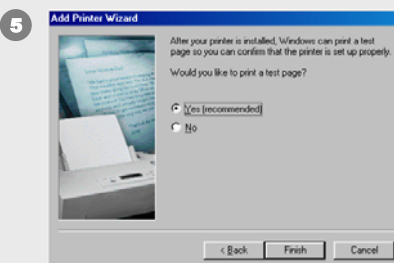
☞ Select a manufacturer and model of the printer.



☞ Select Printer Port and click **Next**.



☞ Enter Printer name and click **Next**.



☞ After printing test, click **Finish**.

#### 12. Power Mode : Select desired power mode when you shut off

DVR System by clicking Power button in Main mode.

**Window** : Go to Window Mode when you click Power button.

**Power off** : DVR system power off when you click Power button.

(Notice : DVR system is security product. So If user working in window mode, you have a possibility get problem in your system. )

# 저장방식 설정

## 2. Recording Type

Camera			Recording Type				Sensor type	Time	10 Alarm Control								
1 NO	2 lay	3 Position	5 Event	6 Frame	7 Pre	8 Post			1 2 3 4 5 6 7 8								
1	Ok		Record	2	0	0	o	0	.	.	.	.	.	.	.	.	.
2	Ok		Record	2	0	0	o	0	.	.	.	.	.	.	.	.	.
3	Ok		Record	2	0	0	o	0	.	.	.	.	.	.	.	.	.
4	Ok		Record	2	0	0	o	0	.	.	.	.	.	.	.	.	.
5	Ok		Record	2	0	0	o	0	.	.	.	.	.	.	.	.	.
6	Ok		Record	2	0	0	o	0	.	.	.	.	.	.	.	.	.
7	Ok		Record	2	0	0	o	0	.	.	.	.	.	.	.	.	.
8	Ok		Record	2	0	0	o	0	.	.	.	.	.	.	.	.	.
9	Ok		Record	2	0	0	o	0	.	.	.	.	.	.	.	.	.
10	Ok		Record	2	0	0	o	0	.	.	.	.	.	.	.	.	.
11	Ok		Record	2	0	0	o	0	.	.	.	.	.	.	.	.	.
12	Ok		Record	2	0	0	o	0	.	.	.	.	.	.	.	.	.
13	Ok		Record	2	0	0	o	0	.	.	.	.	.	.	.	.	.
14	Ok		Record	2	0	0	o	0	.	.	.	.	.	.	.	.	.
15	Ok		Record	2	0	0	o	0	.	.	.	.	.	.	.	.	.
16	Ok		Record	2	0	0	o	0	.	.	.	.	.	.	.	.	.

11 Auto Camera Search      15 Event setup      16 Check camera error detect  
 14 Compensation Video signal      12 Event ALARM Event >>      13 Record Motion/Sensor Event

On screen keyboard      Save      Apply

### 1. Camera Number

### 2. Connect : Hidden camera function.

‘None’ selected camera does not show images on the screen while recording so that people can not notice it is recording.

**3. Camera name :** Click the left button of mouse where you want and enter the camera name as you want.

**4. Event :** You can set different recording type (sensor , motion, schedule, record, no record ) by Mouse click.

When block selected, it can be changed by Right Mouse click.



Rec/Mot
Rec/Sen
Mot/Sen
R/M/S

Camera			Recording Type			
NO	Display	Position	Event	Frame (1-30)	Pre	Post
1	Ok		Rec/Mot	4	0	0
2	Ok		Rec/Sen	4	0	0
3	Ok		Mot/Sen	4	0	0
4	Ok		R/M/S	4	0	0

Rec/mot : Normally DVR recorded by setup frame.

But, when motion happens DVR will be record by setup Pre/Post frame.

This is complex function for recording & motion the selected channel.

So, this is very useful function for saving hardware.

- A** Setup Rec/Mot for event.
- B** Select recording frame while recording.
- C** Select recording frame of Pre/Post during motion

REC/MOT : When motion events, recording frame will be increased

REC/SEN : When sensor works during recording, recording frame will be increased.

MOT/SEN : This is recording function for Motion/Sensor at the same time.

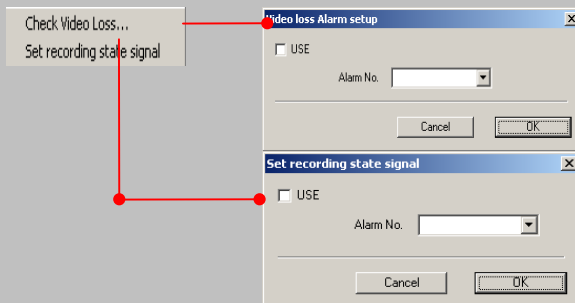
R/M/S : This is recording function for Recording/Motion/Sensor at the same time.



- If user wants to setup same setting for several camera as follows ;
1. Drag select area by mouse left button.
  2. After click mouse right button, setup recording type

## RECORDING TYPE

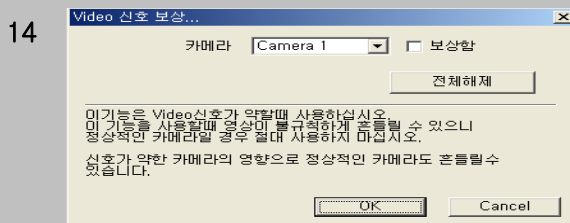
5. Frame : Adjust number of recording frames for each channel.
6. Pre : Pre- Alarm function. Setup record-starting time before event happens. (Second)
7. Post : Post- Alarm function. Setup the duration time of recording after event finishes. (Second)
8. Sensor Type : Select the sensor type. Normal Open / Normal Close Type
  - : Normal Close type sensor      O : Normal Open type sensor
9. Time : Set the running time of the alarm control outputs
10. Alarm control
  - : D/O Alarm control off      O : Alarm control on
11. Auto Camera Search : If you click this button, not received image channel from camera to log screen automatically. And then, it doesn't record the data in HDD.
12. Set ALARM Event>>



When stop input video signal, alarm will be started.

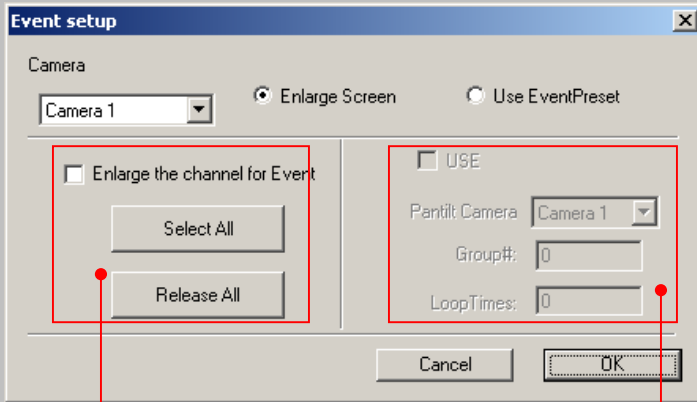
When stop input recording signal, alarm will be started.

- 13 Display history of MOTION and EVENT in search



This function compensate weak video signal from camera.

15



When event happens, selected channel will be enlarged to full screen.

When event happens, selected camera makes preset function start.

16 Irregular camera searching : This function checks camera state.

17 Functions of No.14 Video signal loss & No.16 Irregular camera searching are only for DF-900, 100, 1500, 2400.

## SCHEDULE

### 3 . Schedule

User has to setup “Schedule” in event of **Recording Type**.

Standard | Recording Type | **Schedule** | Motion | Color Control | PAN/TILT | Control User Access | Back Up

Camera position: CH 1

1 Camera

2

	SUN	MON	TUE	WED	THU	FRI	SAT
00:00	.	.	.	.	.	.	.
01:00	.	.	.	.	.	.	.
02:00	.	.	.	.	.	.	.
03:00	.	.	.	.	.	.	.
04:00	.	.	.	.	.	.	.
05:00	.	.	.	.	.	.	.
06:00	.	.	.	.	.	.	.
07:00	.	.	.	.	.	.	.
08:00	.	.	.	.	.	.	.
09:00	.	.	.	.	.	.	.
10:00	.	.	.	.	.	.	.
11:00	.	.	.	.	.	.	.
12:00	.	.	.	.	.	.	.
13:00	.	.	.	.	.	.	.
14:00	.	.	.	.	.	.	.
15:00	.	.	.	.	.	.	.
16:00	.	.	.	.	.	.	.
17:00	.	.	.	.	.	.	.
18:00	.	.	.	.	.	.	.
19:00	.	.	.	.	.	.	.
20:00	.	.	.	.	.	.	.
21:00	.	.	.	.	.	.	.
22:00	.	.	.	.	.	.	.
23:00	.	.	.	.	.	.	.

Record | Motion | Rec/Mot | Sensor | Rec/Sen | Mot/Sen | R/M/S | Cancel

On screen keyboard | Save | Apply

1. Select camera number to record by schedule.

2. Choose **Record / Motion / Sensor** at the desired day and time box.

 **Example** : How to set a schedule



① Choose a desired camera number

② Drag mouse to decide time table to record.

③ Go back to **SETUP/RECORDING TYPE** to set Recording type as “Schedule”

④ When you want Motion Detection recording by schedule,

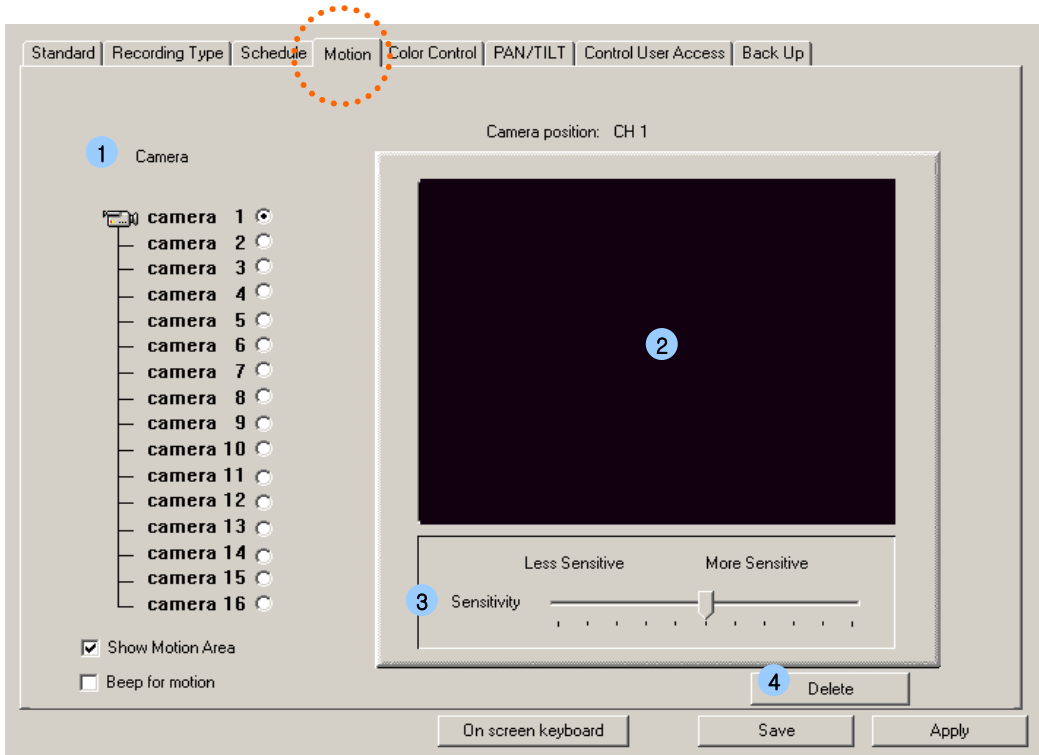
Motion detection area and channels are must be set up correctly.



## MOTION SETUP

### 4. Motion :

Select the area for motion detection with mouse.



1. **Channel** : Select the specific camera

2. **Motion area** : To select motion detection area, move the mouse pointer to the desired area and select the range by dragging the mouse.  
No. of Motion detection area is available to set without limit.

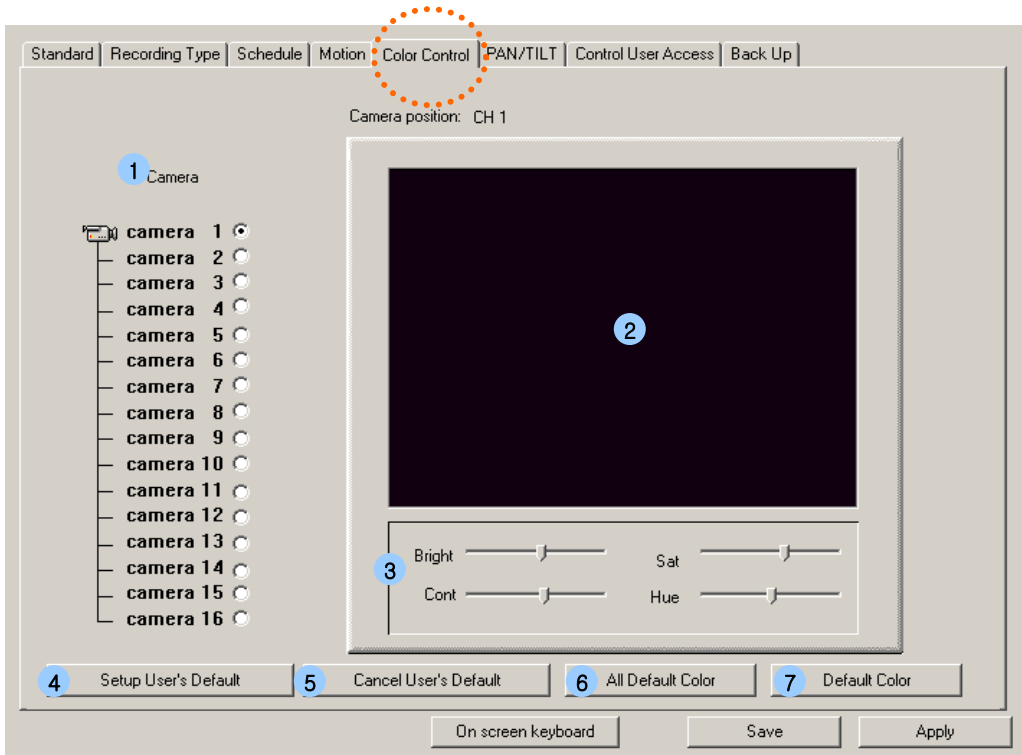
3. **Sensitivity** : Move the bar to adjust the sensitivity of Motion detection

4. **Delete** : Deselect motion area.

## COLOR SETUP

### 5. Color Control

☞ Setup the color of pictures.



1. **Channel** : Select a desired camera No.
2. **Color area** : The selected camera image is displayed.
3. **Bright** : Adjust brightness of the image.  
**Saturation** : Adjust saturation of the image.  
**Contrast** : Adjust contrast of the image.  
**Hue** : Adjust hue of the image.  
\* Move the bar to adjust the images.
4. **Setup User's Default** : Setup your desired colors to Default Color
5. **Cancel User's Default** : Setup User's Default Color 4 to DVR Default Color.
6. **All Default Color** : Set All Camera to Default Color.
7. **Default Color** : Set a desired Camera to Default Color.

## PAN / TILT

### 6. PAN/TILT

👉 Insert PAN/TILT protocol code for brand new PAN/TILT Receiver.

Standard | Recording Type | Schedule | Motion | Color Control | PAN/TILT | Control User Access | Back Up

1 Camera

- camera 1
- camera 2
- camera 3
- camera 4
- camera 5
- camera 6
- camera 7
- camera 8
- camera 9
- camera 10
- camera 11
- camera 12
- camera 13
- camera 14
- camera 15
- camera 16

4

User edit... Master Controller...

Type

PTZ Model Unit No

NO PTZ CAMERA(fixed camera) 1

3 Setup communication

COM Port Speed Data bit Parity

COM2 9600 8 None

4 On screen keyboard Save Apply

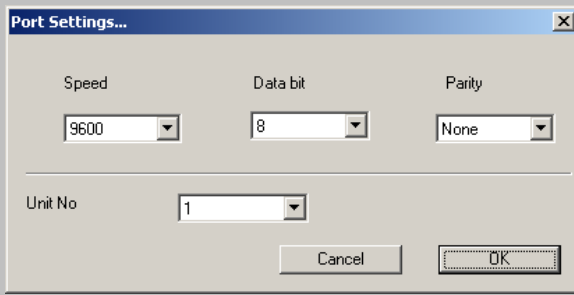
1. Select camera No.
2. Chose RX brand or Model name on **2** and click 'Insert' button
3. Select COM port.



#### New Protocol : When you cannot find camera name on **2**

Insert New RX brand or Model name on **4** Click " Insert " button to active protocol code box, or

Just contact where you purchase a system, we will set it for you.



## 1. Unit# & Communication condition

### 1) Special feature

- User can select different unit# each screen without concern for camera#
- User can select baudrate, databits, parity
- Therefore, DVR has a flexibility for PTZ camera setup and it will be possible to connect multi pantilt

### 2) How to use :

- In SETUP screen  
Click [Port setup] button -> Select baudrate, databits, parity and unit#.

### 3) Notice:

- When user selected same PTZ camera & unit# in different camera#,  
if user operates one of them, both of them works.

## 2. Select "NO PTZ CAMERA"

- Pantilt function button will be not active.



3. Active button for each PTZ camera model

- Supported function button will be active for camera kinds but others will be not active

4. Add function of Event preset

- 1) When event happens, each screen will be worked by selected AUTOGROUP function.

Master Controller..

- "Master Joystick Controller " : Joystick Controller connect to DVR

User can control PTZ by Joystick.

Good point :

- 1) Easy and comfortable control for PTZ.
- 2) Remote control

## 1. How to use

- Start "Master Joystick Controller use"
- When start function, you have to select controller and setup communication.
- If you don't use this function, should be better close.

### 1) Function START :

- Click "Master Controller"
- (1) Select controller product in "Setup Master Controller"
- (2) Setup communication :
  - Select COMM port
  - Select Communication speed, databits, parity
- (3) Click "OPEN Master Controller"

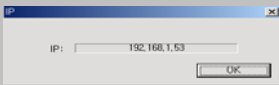
### 2) Function STOP :

- Click "Master Controller"
- Click "CLOSE Master Controller"

## NETWORK

### 7. Control User Remote Access

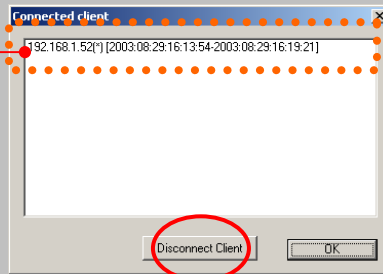
Select type of network

1. Select **TCP/IP** for Remote Access (TCP/IP, Modem etc.)  
Select **No connection** when you don't connect client site via network.
2. Check IP address  

3. Transmission Speed and Image quality control.



4. **Insert ID and Password** : Client who try to connect from remote site will be checked and confirm to access when certain IP and Password were already registered or refuse to connect.
5. Add up to list
6. Delete from list
7. **Connected Client List** : Display the current connected Client site

Current connected client

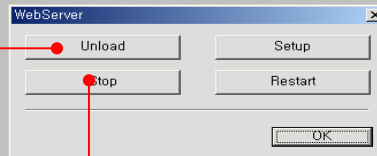


You can disconnect the Client site

**WebServer**

Setup Client function through web server.

Existence memory-web client delete



Stop transmission to WEB SERVER





9.

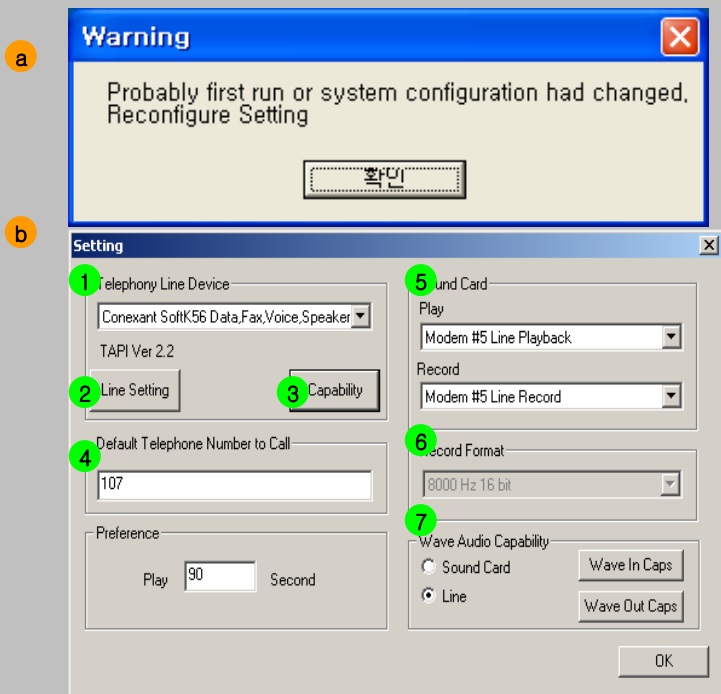


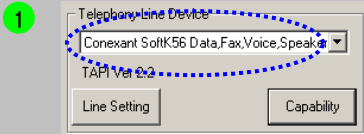
If you want to use Emergency Call, you have to make it active in “control user access” of setup mode

After make it active, this function will be execute when server reboot.

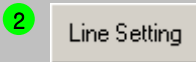
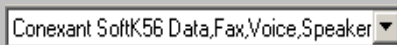
7.

If program executed first time or after changing modem setup of system, will be pop up **a** . And then, If you click OK button, will go to **b** automatically.

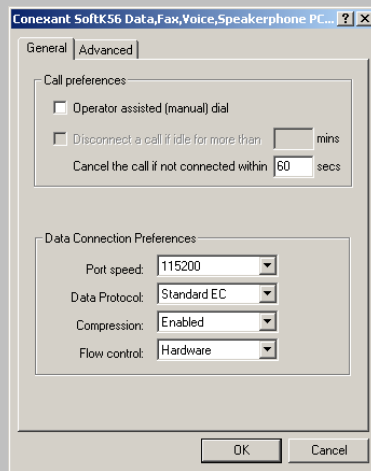




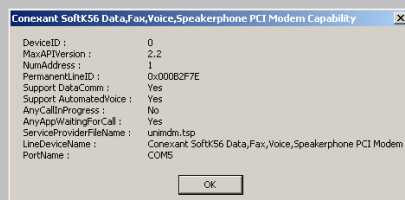
Telephony Line Device  
–Modem information  
–Normally, you can see one modem name, but if computer has a several voice modem, will be show all of them. So, you can select one of them.



Click “Line Setting” button.  
You can set modem for your desire.  
Basically, Don’t need change default setup.



Click button, you can see detail information of modem.





4

Default Telephone Number to Call

Default Telephone Number to Call  
: Insert telephone number of contact person on event

5

Preference

Play  Second

Preference : Insert total time for message by phone.  
Ex) Setting time : 90sec.

On event, system send to message to contact person for 90 seconds by phone

6

Sound Card

Play  
Modem #5 Line Playback

Record  
Modem #5 Line Record

Sound Card : Select wave device

7

Record Format

Record Format : Decide format for recording

8

Wave Audio Capability

Sound Card

Line

Wave Audio Capability :  
Check efficiency of wave device about voice modem and sound card.

Sound card : efficiency of wave device

-Line : efficiency of wave device about voice modem

9

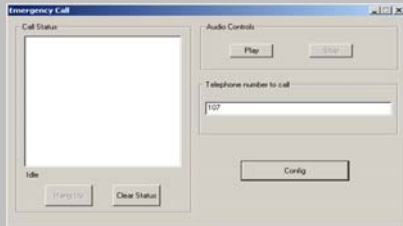
Wave Output Capabilities

Conexant SoftK56 Data, Fax, Voice, Speakerphone PCI Modem Support play Format

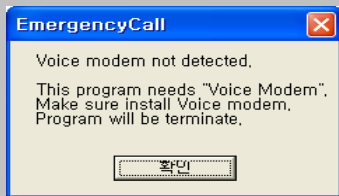
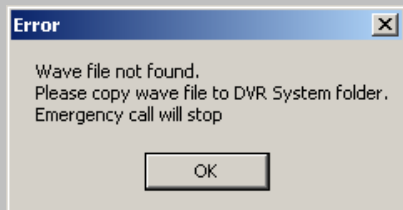
8.00kHz, 8 Bit	No
8.00kHz, 16 Bit	Yes
11.03kHz, 8 Bit	No
11.03kHz, 16 Bit	No
22.05kHz, 8 Bit	No
22.05kHz, 16 Bit	No
44.10kHz, 8 Bit	No
44.10kHz, 16 Bit	No

OK

After finish setup will be pop up “Emergency call box”.  
But when you finish setup, the box will be disappear automatically.

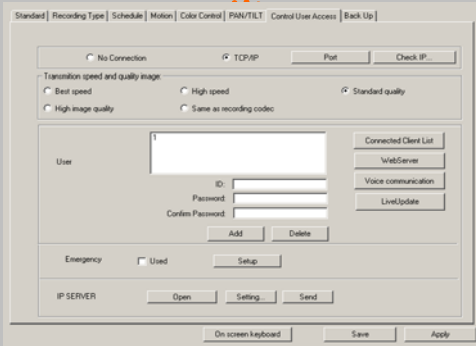


While executing Emergency Call program that system has a some problem,  
program will be finish after showing message box.



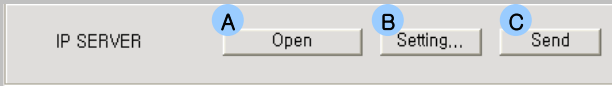
If program not perceptive voice modem, will be showing message and  
finish program.

10



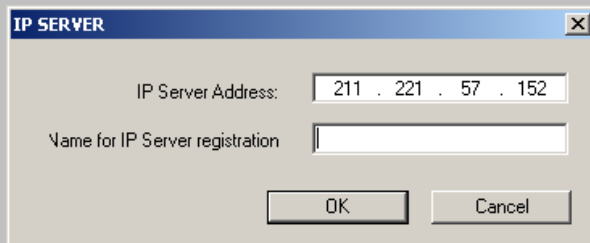
### Registration dynamic IP in DVR

- Setup
- > click "control user access"
- > Display 10 box.
- > IP server setup



Click "Setting" button.

IP Server Address : 211.221.57.151  
(IP server address was settled, user CAN'T CHANGE)  
Insert name for IP server registration. Next click "OK"  
But this is only pre-setup for registration of Dynamic IP.




### Send

After setting, Register to Dynamic IP server.

While your name transmit to Dynamic IP Server, If already your name is not exist, you will see message for success

But If already exist your name or registration same name again that system will be show “Already exist name”

We recommend execute this button only one time after setting.

But, If you want to register different DVR server name that you can execute after select other name in setting.



### Open

This button make IP ON status in Dynamic IP Server.  
You can know server status in Dynamic IP server.



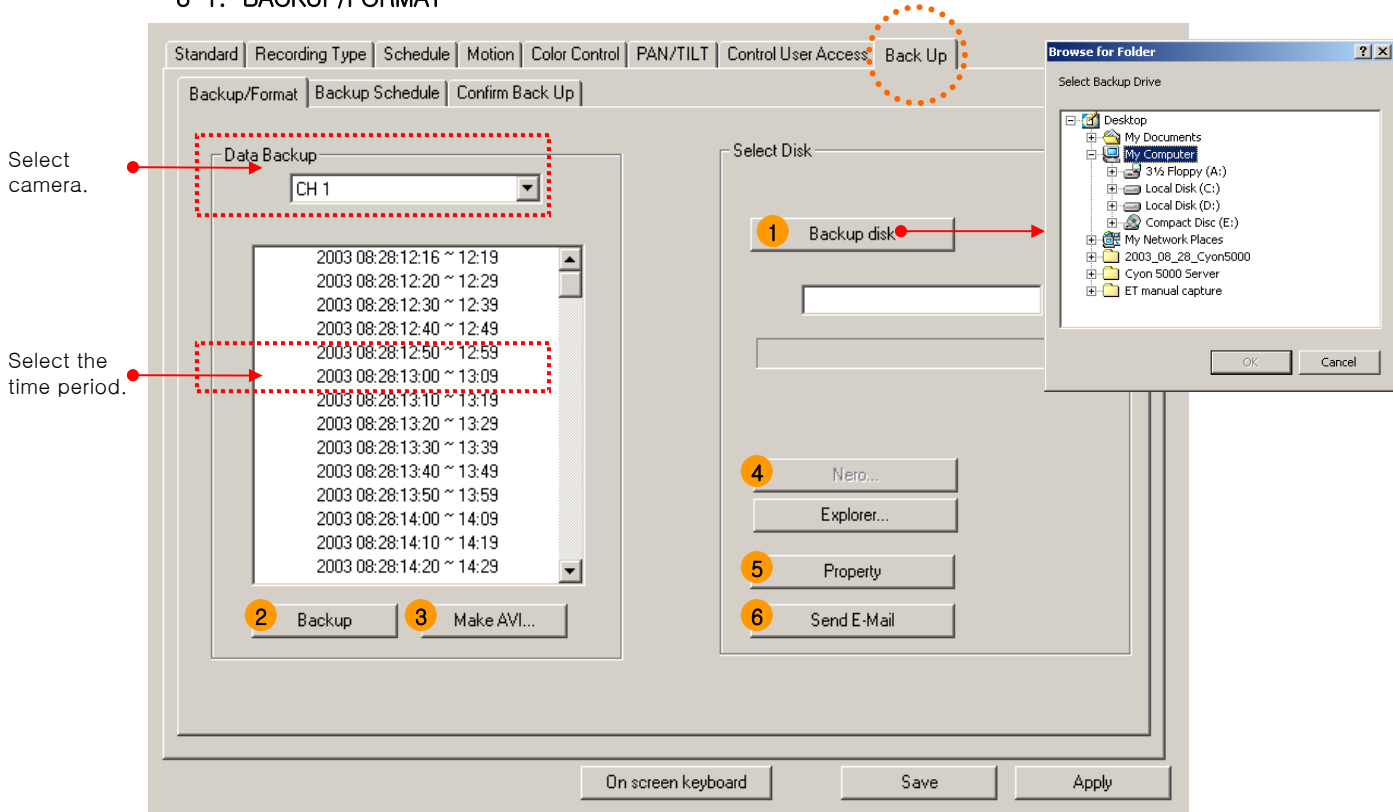
\*. When you register Dynamic IP server first time, you have to execute Setting and Send

Also, we make “Open” button for your reference, this function was not required necessary. But if you use this function, it should be make a better system.

# BACK UP

## 8. Back Up :

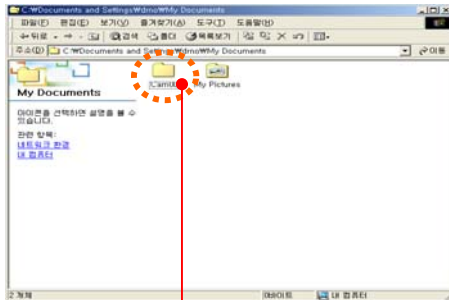
### 8-1. BACKUP/FORMAT



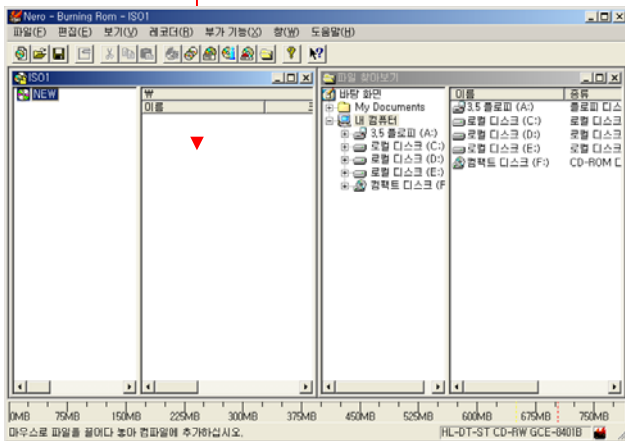
## Backup

1. Select a desired folder to save data.  
(Click **Backup disk** button and then **Browser for folder** will be displayed.)  
Select camera for data back up.  
Drag a desired time to back up with mouse in the time table.  
Click again the selected time period to deselect the time.
2. Click **Backup** button to start data backup.

1. Select **a desired folder** to save data.  
 (Click **Backup disk** button and then **Browse for folder** will be displayed.)  
 Select the time period for backup with mouse.  
 Click again the selected time period to deselect the time.
2. Click **Backup** button to start data backup.
3. Click  , will be displayed folder for saved backup data



Click button



Saved DATA move to Nero Burning Rom. (EX: CAM00)



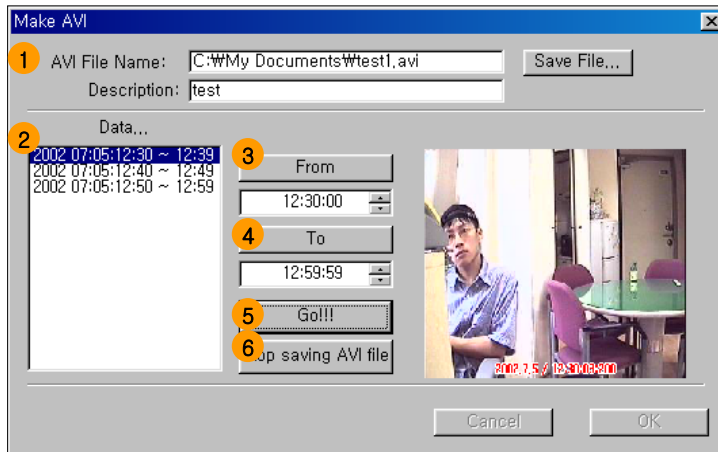


Make AVI...

To make AVI file for saved DATA.

**Send Email** : Send AVI file via Email.

**Play** : Can play without special player. (ex: windows media player)



1. Insert **Description**

2. Select the desired time period for backup.

3. Click **“From”** to check first data time & image for AVI file

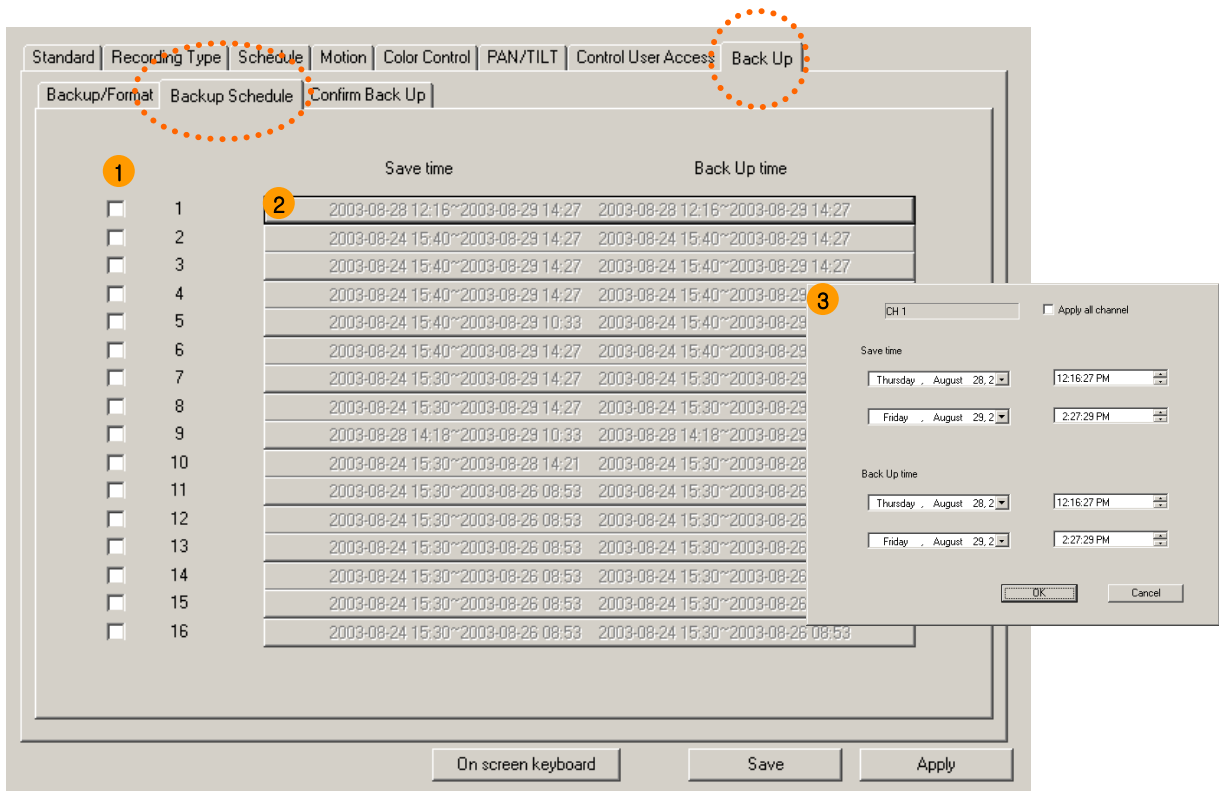
4. Click **“To”** to check last data time & image of desired AVI file

5. Click **“Go”** to make AVI file

6. Click **“Stop saving AVI file”** to stop making AVI file.

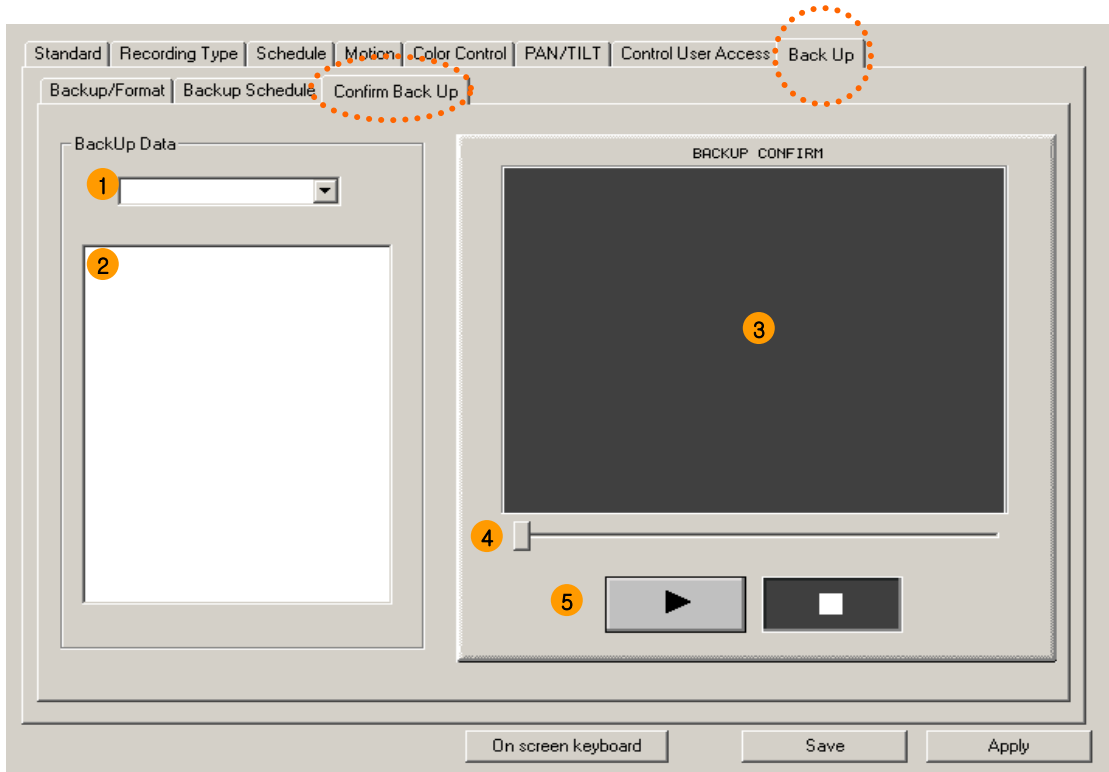
## 8-2. BACKUP/SCHEDULE

Setup a schedule for Auto-backup.



1.  When you want auto back up, select camera and time to back up
2. By click, able to select recorded image data base, and recording reservation time.
3. Auto-backup Setup
  - Apply all channel :  Select all camera.
  - Save time : Setup time period of Data for Auto-backup.
  - Backup time : Setup time for backup.

### 8-3. BACKUP



1. Select Camera

2. Backed up data list (time table.) :

**Check Back Up data** – Able to check whether back up data correctly or not.

The image in box when press Play button is from back up media, not from HDD.

3. Play to confirm back up image

4. Slide bar to play.

5. Play :



Play

Stop



# **1. DVR SERVER**

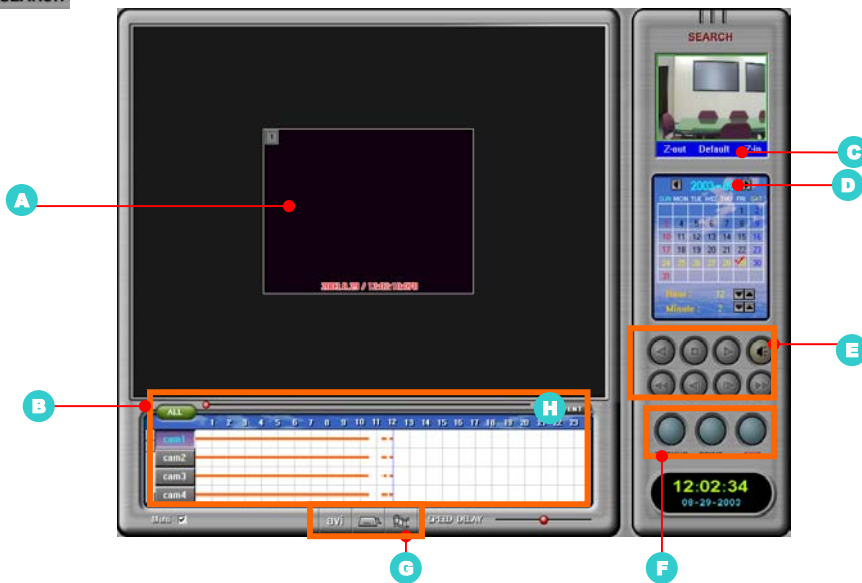
## **1-3. Search mode**

# SEARCH Mode

H



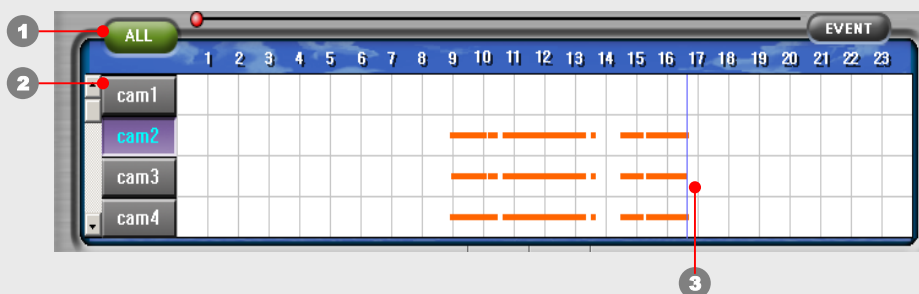
Go to "SEARCH" mode.



A. Search screen

B. Time table

Display recorded data with red line along time



- 1 : Select all cameras for searching
- 2 : Select desired camera No. for searching  
(  Multi-  : Add camera numbers to be selected at same time )
- 3 : Move the Blue line for desired time for searching.

C. ZOOM IN/OUT : Select one channel to Zoom In/Out .

( Use for one channel search)




Zoom Out

Default

Zoom In

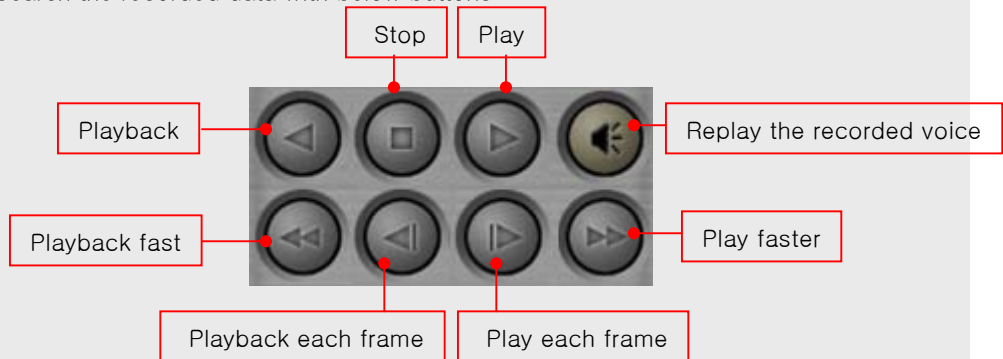
D. Calendar

Display the date with recorded data with 

Click desired date, hour & minute for searching

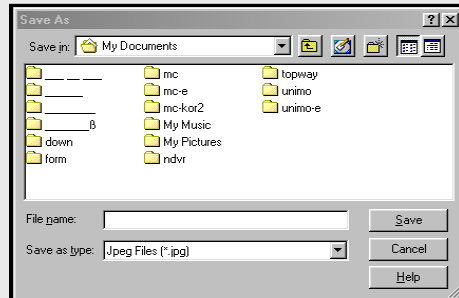


E. Search the recorded data with below buttons



F.  : BACKUP

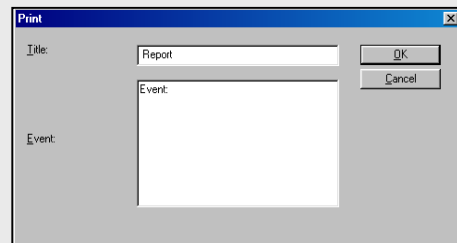
Back up the desired data to FDD  
: for one frame image back up




 : PRINT

Printing image

1. Select a desired image
2. Enter Title & Event.



 : EXIT- Go to Display Mode

G

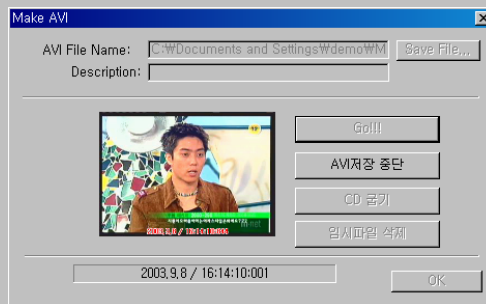


**Panoram** : You can search desired image from selected time successively.

This function support only one channel.



Call to screen keyboard



User can backup data through AVI during search.

If click AVI button during search, above window will be active.

After insert required article, user can save data.

In case of WINDOWS XP, user can backup CD by WINDOWS' itself recording function.

H. **EVENT** : Display history of MOTION & EVENT (refer to Page. 21)





## **2. CLIENT**

### **1MULTI CLIENT**

a multi client

b m to m

### **2 web client**

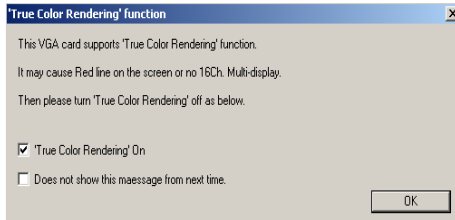
# MULTI CLIENT

## CLIENT

After Installation of program as same way as server, Double-click



Icon.

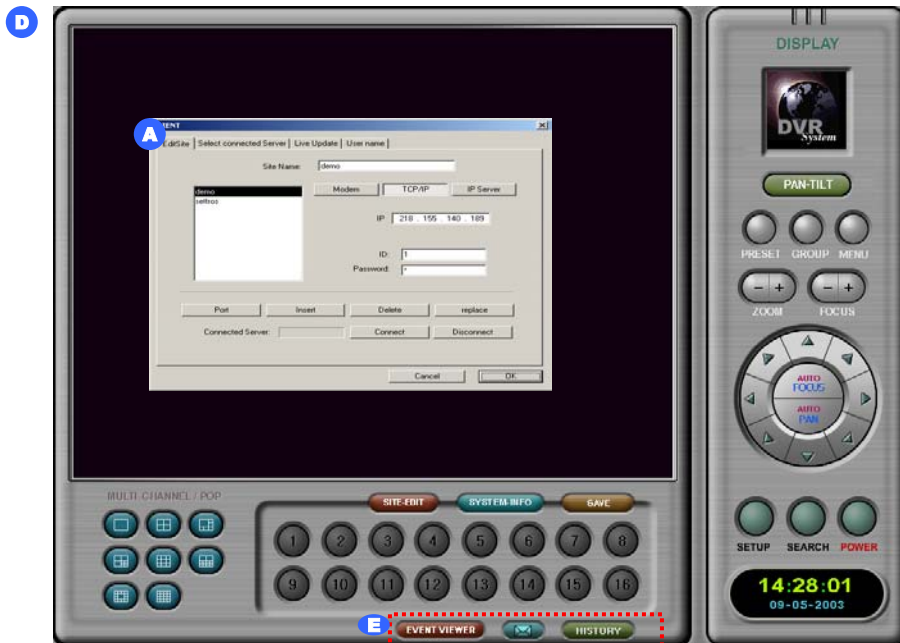


Check VGA card :

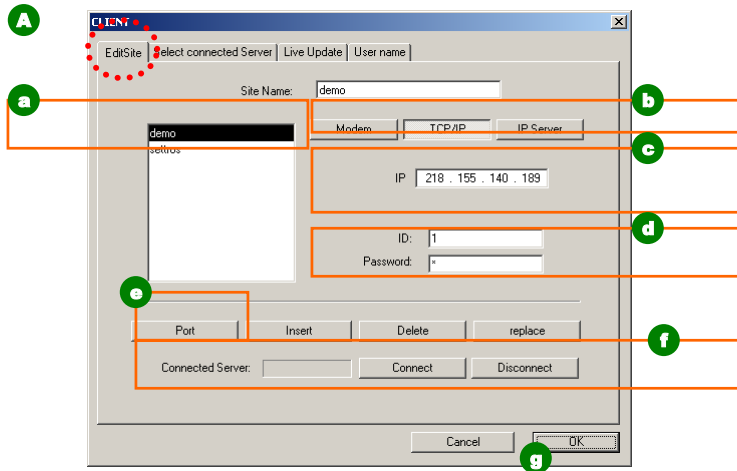
If VGA card supports overlay, check it.

Otherwise, please don't check it.

Because sometimes image is not clear.



## MULTI CLIENT



a. Site Name : Insert name for a connected site

b. Choose network connection type.

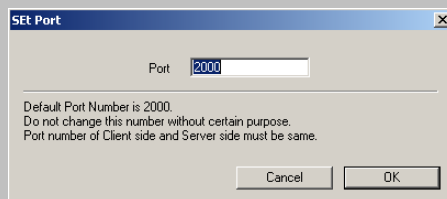
Modem => Phone No.

TCP/IP => IP Address

c. Insert IP address for a connected DVR server

d. Enter ID & Password for the site.

e. Setup port

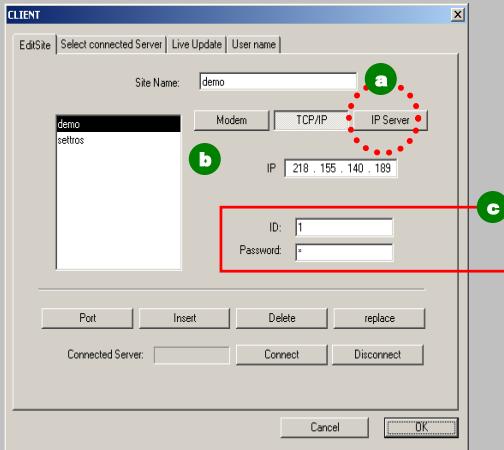


f. Connect : Connect to the selected site.

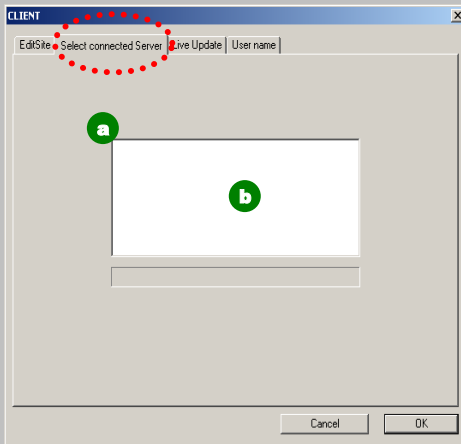
g. Cancel / OK : Cancel or OK for connection of server

If you want to multi sever connection, please repeat this way.

# MULTI CLIENT



- a** Insert IP SERVER
- b** Insert SERVER NAME  
(Refer to SERVER SET UP IPSEVER )
- c** Insert connected ID and PASSWORD



- a** Click desired site from connected list
- b** Display current IP server

# MULTI CLIENT



A . Camera Number / recording state.

( [ ] : Camera No. / [ ] : Recording )

B . **2003.3.24 / 19:22:22:767** Display time of sever system

C. Select a screen division among 1/4/6/7/9/10/13/16Ch.

D. **SITE-EDIT** Insert connected server IP address and Password

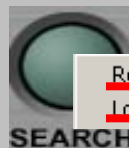
E. **SAVE** Record displaying images of client site at client HDD.



Go to ' SETUP ' Mode



Go to ' SEARCH ' Mode



1. Remote Search :

Search images from server PC.

2. Local Search :

Search images directly from Client PC.

F. PAN/TILT On/OFF



**Local Search :**

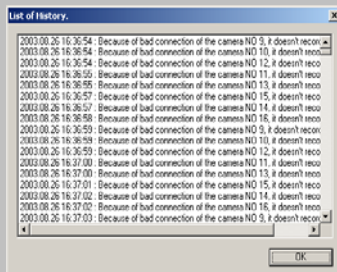
Client PC can record only present display images among images from Server PC.

(For example, if you select one channel on display mode, only present images is recorded on PC.

# CLIENT

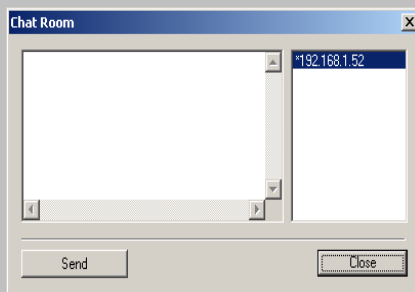


G.



Record history of DVR SERVER.

You can know working history and Connect history from outside



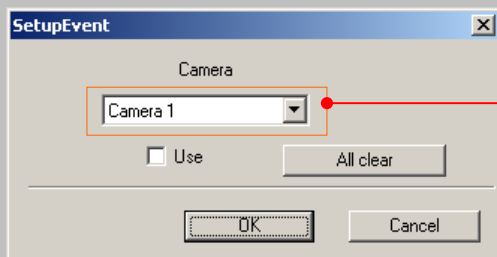
Real time chatting with SERVER and CLIENT.

If you connect several user, you can choose just one user and then send to message to one user.

## EVENT VIEWER

On event, will be pop up screen. So, Increase to intensive efficient of monitoring.

But, This function need to event setting for connected server



Select camera on event.



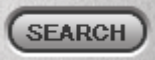
Display event description

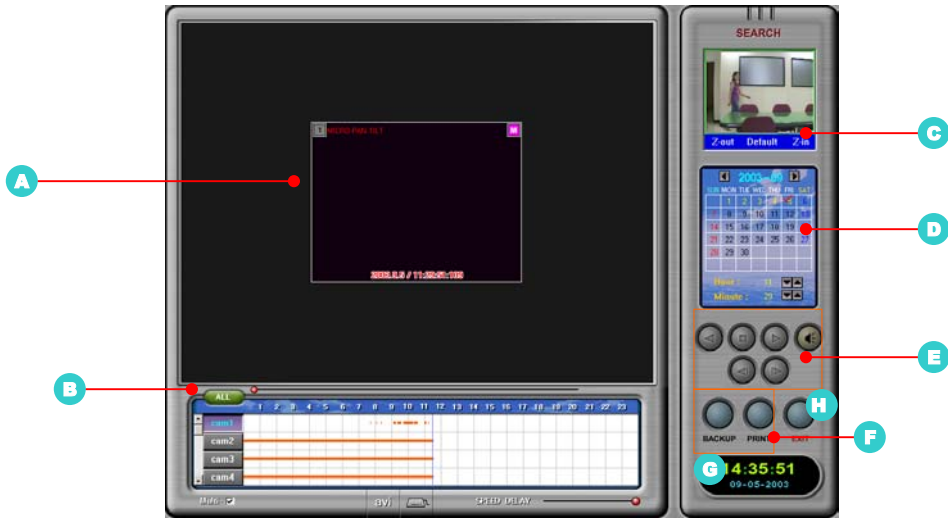
I. **Power off** : When you click the Power button, DVR system will be shut down.

H. **TIME** : Display current time.



# SEARCH

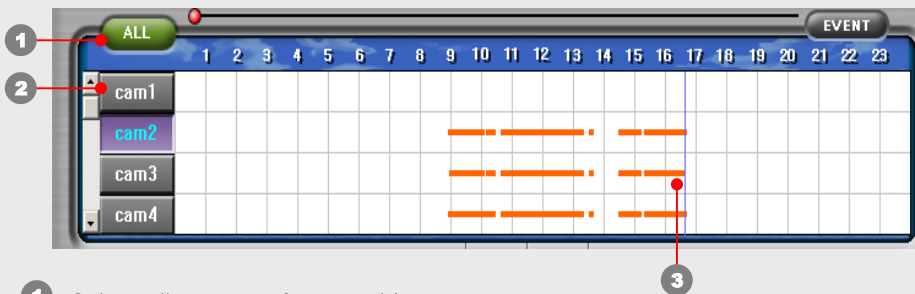
- H**  Go to "SEARCH" mode.




A. Search screen

B. Time table

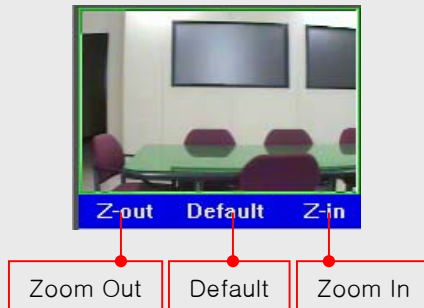
Display recorded data with red line along time




- ①: Select all cameras for searching
- ②: Select desired camera No. for searching  
(  -  Add camera numbers to be selected at same time.)
- ③: Move the Blue line for desired time for searching

C. ZOOM IN/OUT : Select one channel to Zoom In/Out .

( Use for one channel search)



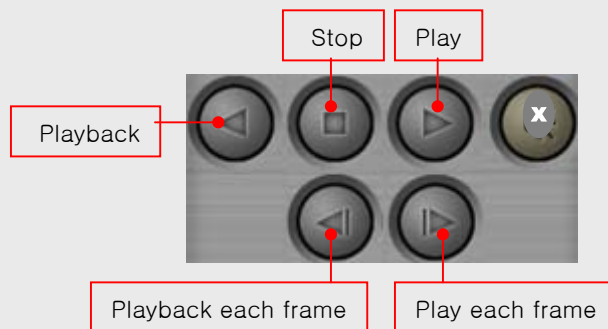
D. Calendar

Display the date with recorded data with .

Click desired date, hour & minute for searching



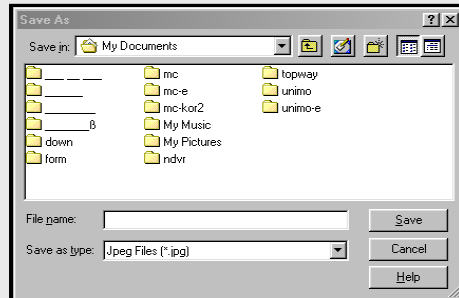
E. Search the recorded data with below buttons



F.  : BACKUP

Back up a desired data to FDD to BMP or JPG file.

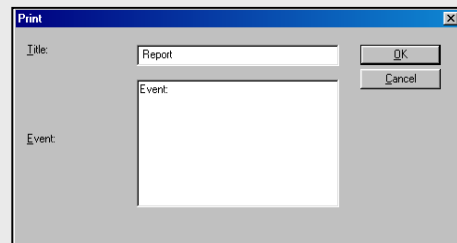
Only for one frame image back up.




 : PRINT

Printing image

1. Select a desired image
2. Enter Title & Event
3. Send a image via E-mail

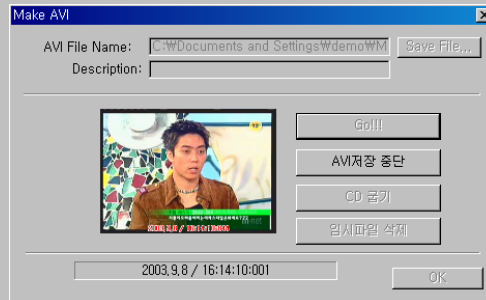


 : EXIT – Go to display mode.

G



Call to screen keyboard.



User can backup data through AVI during search.

If click AVI button during search, above window will be active.

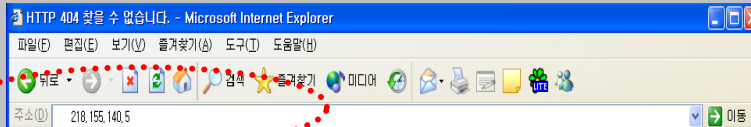
After insert required article, user can save data.

In case of WINDOWS XP, user can backup CD by WINDOWS' itself recording function.

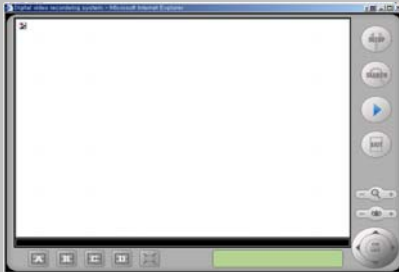
H. EVENT : Display history of MOTION & EVENT (refer to Page. 21)

# Web client

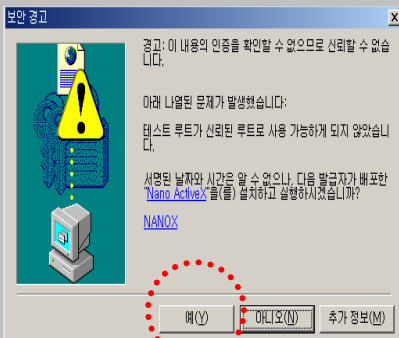
## 1.Connection



1. Insert IP address of DVR server



2 When connect web server, will be download G.U.I (First time, it spends 2~3 minutes for the downloading. But next time will be faster than first time)

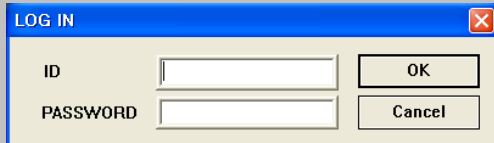


3. Download Nano ACTIVEX



4. When finish download activex, will be connected automatically.

## Web client



LOG IN

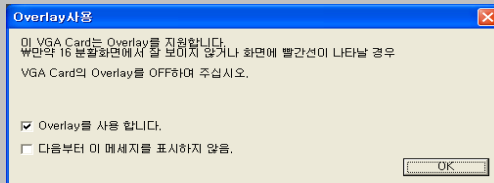
ID

PASSWORD

OK

Cancel

5. Insert ID and PASSWORD



Overlay사용

이 VGA Card는 Overlay를 지원합니다.  
휴먼의 16 분할화면에서 잘 보이지 않거나 화면에 빨간선이 나타날 경우  
VGA Card의 Overlay를 OFF하여 주십시오.

Overlay를 사용 합니다.

다음부터 이 메시지를 표시하지 않음.

OK

6. Select OVERLAY function.

Before use this function, please check whether VGA card supports this function or not.




When you connect to WEB CLIENT first time, it would be spent total 5~10 minutes for the downloading. Also, sometimes could be interrupted to download by firewall or router.

# Web client main



**a**  
Display transmitted screen from Server

**b**  
 Go to setup mode

 Search for saved data in SERVER.



## Web client

c



Display switching image

You can check transmitted image each 4ch.



Change to full screen

d

Pan/tilt controller

Control focus



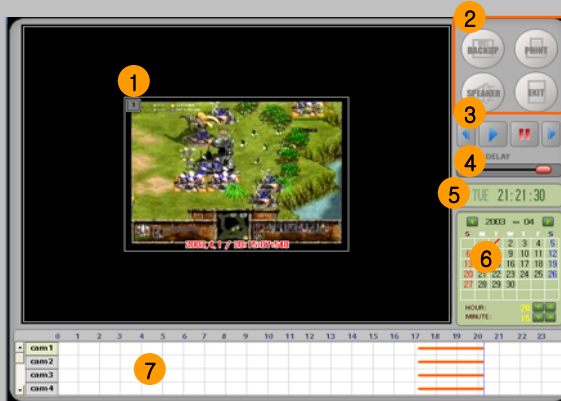
Control zoom in/out of  
Pantilt camera

Control pan/tilt camera of  
Server


If you click button, pantilt  
camera function will be  
active





# Web client search

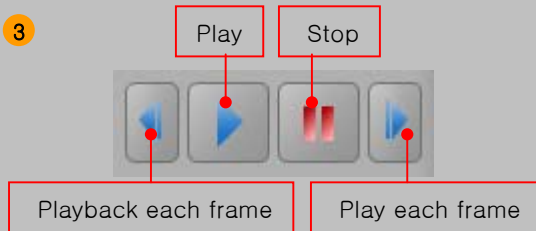


1 Display saved image of connected server

2  : Data back up : Save data per unit screen.  
Save current image on screen.

 : PRINT Printing saved image  
1. Select a desired image  
2. Enter Title & Event.

 : EXIT Go to main screen.



## Web client

4



Control search speed

5



TIME : Display current time

6



Calendar – Display the date with recorded data

(Yellow color )

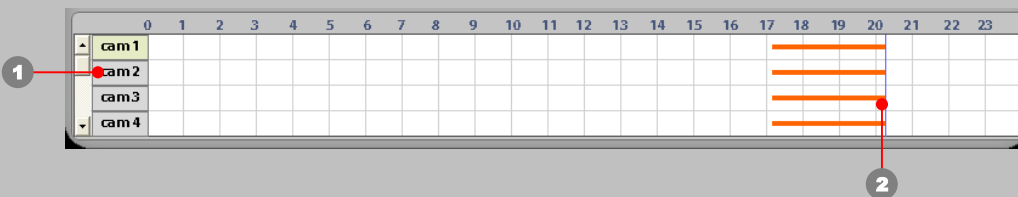
Click desired date, hour & minute for searching

7

A. Display saved image

B. Time table

Display recorded data with red line along time



- 1 : Select desired camera No. for searching  
( In web client, you can search only each one channel)
- 2 : Move the Red line for desired time for searching.