

## Pairing

Pairing Mode	Button Action	LED State
Bluetooth Headset	As power off, press 6 seconds	Blue LED rapidly flashes (pairing standby)
PTT Remote Control	As power off, press 6 seconds	Red LED flashes 5 times continuously and rapidly flashes (pairing standby)
PTT Dongle	As power off, press 6 seconds	Blue LED flashes 5 times continuously and rapidly flashes (pairing standby)

- When pairing standby mode, **PTT Dongle** register **Headset** and **PTT Remote Control** automatically. (Recommend to turn on **PTT Dongle** at last)
- When pairing failed, please proceed from the first step.
- Once pairing completed, you don't need to pair any more. When you power on the product, they're automatically connected.
- When you are out of range(10m), as long as you come back within 20minutes, they're automatically connected. If not connected, please press Multi Button once of **Headset & PTT Remote Control**. (not PTT button)

Paired Standby	Button Action	LED State
Bluetooth Headset	X	Blue LED flashes at a 3 second interval
PTT Remote Control	X	Red LED flashes twice at a 5 second interval
PTT Dongle	X	Blue LED flashes three times at a 5 second interval

## Use as walkie-talkie mode

When you use as walkie-talkie mode, press PTT Button on **PTT Remote Control** and you can talk to the opposite party. (When you use PTT/TRS phone, you will hear twice beep sound from the headset and you can talk then - It depends on the kinds of PTT/TRS phone). You should press and hold PTT Button while you're speaking. You should release PTT Button while you're hearing. These usage is the same as normal two-way radio.

## Use as Phone mode(PTT/TRS)

### Making a call

To make a call, press the numbers on the keypad and press call button on the phone, which is same as general mobile phone use. You shall not use **PTT Remote Control** when you make a call.

### Answering a call

When you use as PTT/TRS phone, you shall use **PTT Remote Control** to answer and to end a call. While phone ringing, press PTT Button once and you can talk over the headset. When you end a call, press the PTT Button for 2 seconds.

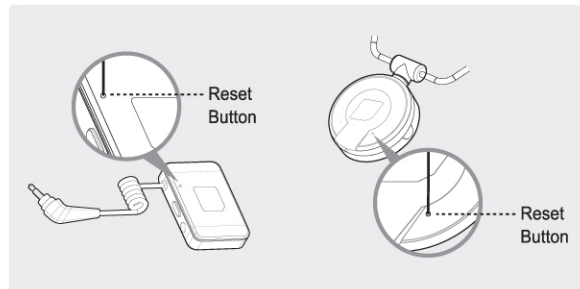


### Important

For the best sound quality, please adjust the volume of PTT/TRS phone & two-way radio and Bluetooth Headset.

## When any device works abnormally

When you have any serious trouble in use, press the reset button on the rear side of **PTT Dongle** and **PTT Remote Control**.



## How to use Bluetooth Headset in separate

You could use **Bluetooth Headset**(SCM713) with all Bluetooth Mobile Phone.

### Pairing

1. As the headset turned off, press and hold the Multi button for more than 7 seconds.
2. You will hear a melody announcing pairable state.
3. While the pairable state, the LED indicator will flash every 0.3 second.
4. Follow the user's manual of your headset.
5. Select SCM713 from the list of device on your handset.
6. When asked for the Pass/Pin code during procedure, enter '0000'(4 Zeros).
7. If the pairing is completed successfully, you will hear a beep. And LED indicator will flash every 3 seconds.

## | Making a call |

### 1. Making a call

When you make a call from your handset, the call will be automatically transferred to the headset. If not automatically transferred, you can transfer the call manually by briefly pressing the Multi Button.

### 2. Last number redialing

Press and hold Multi Button for 2 seconds.

### 3. Voice dialing

Briefly press Multi Button and follow your handset.



#### Tips

This is available only when your handset supports the voice dialing function.

## | Answering a call |

During ringing, briefly press Multi Button.

## | Ending a call |

Briefly press Multi Button or press end button on your handset.

## | Rejecting a call |

During ringing, press and hold Multi Button for more than 2 seconds.



#### Tips

This is available only when your headset is connected with your handset through Handsfree profile.

## | Volume control |

Press Volume Button [ + ] or [ - ] on the headset side to increase or decrease the speaker volume.

## | Transferring a call |

From Handset to Headset : Briefly press Multi Button.

From Headset to Handset : Press Volume [ + ] or [ - ] Button for more than 2 seconds.



Pay attention not to press Multi Button for too long time, then headset will turn off.

# Appendix

## Precautions for safety

- ❗ Keep a place of safety with turning off product.
- ❗ Do not place the product under over 50°C high temperature or a direct ray of light. It may cause to lower of performance and reduce battery life.
- ❗ Keep the product away from humidity & dust.
- ❗ Do not drop the product from high place.
- ❗ Do not touch product and plug with a wet hand.
- ❗ Pay attention that a baby or pet do not suck or bite product.
- ❗ Do not modify, repair, take a part at discretion.
- ❗ Turn off at the place headset use for bidden.
- ❗ If possible, do not use while driving.
- ❗ Keep the headset away from micro-wave or wireless LAN. It may cause a noise.
- ❗ Risk of explosion if battery is replaced by an incorrect type.
- ❗ Dispose of used batteries according to the instructions

## Specifications

	SCM713 (Bluetooth Headset)	SHP612 (PTT Remote Control)	SHD612 (PTT Dongle)
Bluetooth® version	Bluetooth® Ver 2.0 Compatible	Bluetooth® Ver 2.0 Compatible	Bluetooth® Ver 2.0 Compatible
Supported Bluetooth® profile	Headset / Handsfree	Serial	Headset / Serial
Carrier frequency	2,402~2,480GHz	2,402~2,480GHz	2,402~2,480GHz
Operating range	Up to 10m	Up to 10m	Up to 10m
Dimmension(mm)	50.5(L) x 18(W) x 12.2(H)	41.5(L) x 40.5(W) x 13.6(H)	44.9(L) x 40.5(W) x 10.8(H)
Weight	11.9g	12.7g	16.3g
Operating temperature	-10°C~+60°C	-10°C~+60°C	-10°C~+60°C
Battery	3.7V/90mA	3.7V/130mA	3.7V/130mA
Talking Time	Up to 5 hours	Up to 7 hours	Up to 7 hours
Stand-by time	Up to 120 hours	Up to 200 hours	Up to 200 hours
Charging time	Less than 2 hours	Less than 2 hours	Less than 2 hours

## Declaration of confirmation

### Section 15.19 Labelling requirements

This device complies with part 15 of the FCC rules.

Operations is subject to the following two conditions :

1. This device may not cause harmful interference and
2. This device must accept any interference received, including interference that may cause undesired operation.

### Section 15.21 Information to user

The changes or modifications not expressly approved by the party responsible for compliance could void the user's authority to operate the equipment.

#### IMPORTANT NOTE

To comply with the FCC RF exposure compliance requirements, no change to the antenna or the device permitted. Any change to the antenna or the device could result in the device exceeding the RF exposure requirements and void user's authority to operate the device.



## WARRANTY

This product was produced under strict quality management and inspection.

#### Free of charge service

1. All defective units within the applicable Warranty period/s will be repaired or replaced, in the case those faulty goods were handled normally.
2. If you use it commercially, the warranty period/s will be reduced half.

#### Free of charge Warranty shall not apply to

1. Defects or damage resulting from use of the unit in other than its normal and intended manner, eg, in excess of their maximum specifications or operating instructions.
2. Defects or damage from misuse, accident, neglect, improper testing, installation, alteration or modification of any kind, or spillage of food or liquid.
3. Faulty is caused by a nature Disaster.
4. The capacity of expendables is exhausted.

Product name	Bluetooth PTT Full Kit	
Model number	SCM713, SHD612, SHP612	
Warranty period	1year	
Purchases date		
Outlet the unit was purchased		
Tel		
Customer	Address	
	Name	
	Tel	

