

seenda®

User Manual

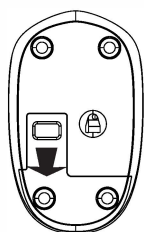
Wireless Mouse



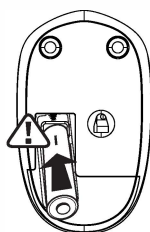
Made in China

Model: SM012

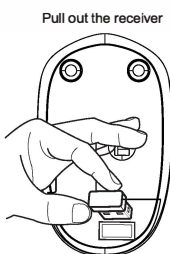
Installation



Open the battery case

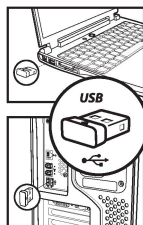


Insert the battery (pay attention to the positive and negative position)



Pull out the receiver

Insert the receiver to the computer USB interface



Data parameter

Basic:

Data transmission: 1Mbps
Frequency: 2403.85MHZ-2479.85MHz
Channel: 16
Engine: Optical
Distance: 30m
Voltage: 1.5V
Current: 11mA
Mouse Key life: Above 3 millions
Mouse Size: 99x60x38.2mm
Mouse Weight: 50g

Step current:

Working current = 11mA
Standby current = 1.3mA
Dormancy current = 50uA
No receiver state = 10-25uA

Tracking performance:

Mouse Resolution: 1600DPI
Mouse Rate of return: 250Hz

System requirement:

IBM or compatible computer
Windows: 2000/ ME/ XP(x64)
/ Vista / 7 / 8 / 10
Mac OS X (More than V10.4)
Workable USB port

Package contents:

- Wireless mouse
- Nano receiver
- Quick start guide

57x90mm展开114x90 100克书写纸单黑色双面印刷 中间对折
06. 11. 01. 0411

FCC STATEMENT :

This device complies with Part 15 of the FCC Rules. Operation is subject to the following two conditions:

- (1) This device may not cause harmful interference, and
- (2) This device must accept any interference received, including interference that may cause undesired operation.

Warning: Changes or modifications not expressly approved by the party responsible for compliance could void the user's authority to operate the equipment.

NOTE: This equipment has been tested and found to comply with the limits for a Class B digital device, pursuant to Part 15 of the FCC Rules. These limits are designed to provide reasonable protection against harmful interference in a residential installation. This equipment generates uses and can radiate radio frequency energy and, if not installed and used in accordance with the instructions, may cause harmful interference to radio communications. However, there is no guarantee that interference will not occur in a particular installation. If this equipment does cause harmful interference to radio or television reception, which can be determined by turning the equipment off and on, the user is encouraged to try to correct the interference by one or more of the following measures:

- Reorient or relocate the receiving antenna.

- Increase the separation between the equipment and receiver.

- Connect the equipment into an outlet on a circuit different from that to which the receiver is connected.

- Consult the dealer or an experienced radio/TV technician for help.