

# **Parani-SD100L/200L**

## **User Guide**

**Version 1.0.0**

**2006-09-18**

## **User Guide for the Parani-SD100L/200L**

Version 1.0.0

Firmware version 1.0.X

Last revised on June 14, 2006

Printed in Korea

### **Copyright**

Copyright 2002, Sena Technologies, Inc. All rights reserved.

Sena Technologies reserves the right to make changes and improvements to its product without providing notice.

### **Trademark**

Parani™ is a trademark of Sena Technologies, Inc.

Windows® is a registered trademark of Microsoft Corporation.

Ethernet® is a registered trademark of XEROX Corporation.

### **Notice to Users**

When a system failure may cause serious consequences, protecting life and property against such consequences with a backup system or safety device is essential. The user agrees that protection against consequences resulting from system failure is the user's responsibility.

This device is not approved for life-support or medical systems.

Changes or modifications to this device not explicitly approved by Sena Technologies will void the user's authority to operate this device.

### **Precautions and Safety**

#### **Electricity**

Use only the supplied AC adapter. Use of unauthorized power adapter is not recommended. Electrical shock may result.

Do not kink or crease the power cable or place heavy objects on the power cable. Fire can result from damaged power cables.

Do not handle power plug and adapter with wet hands. Electrical shock may result.

Immediately power off the product and unplug the AC adapter if smoke or odors emit from the product and adapter. Fire can result from improper use.

Immediately power off the product and unplug the AC adapter if water or other liquids are present. Fire can result from improper use.

#### **Product**

Parani-SD meets the RS-232 standards. Do not wire with non-standard products. Damage to your products may result from improper use.

Do not drop or subject the device to impact. Damage to your products may result from improper use.

Keep away from harsh environments including humid, dusty, and smoky areas. Damage to your products may result from improper use.

Do not use excessive force on the buttons or attempt to disassemble the device. Damage to your products may result from improper use.

Do not place heavy objects on the product. Damage to your products may result from improper use.

### **Technical Support**

Sena Technologies, Inc.

210 Yangjae-dong, Seocho-gu,

Seoul 137-130, Korea

Tel: (+82-2) 573-5422

Fax: (+82-2) 573-7710

E-Mail: [support@sena.com](mailto:support@sena.com)

Website: <http://www.sena.com>

# Contents

<b>1. Introduction</b>	<b>6</b>
1.1. Overview .....	6
1.2. Package Check List.....	6
1.3. Product Specification.....	7
<b>2. Getting Started</b>	<b>8</b>
2.1. Panel Layout .....	8
2.2. Connecting the Hardware .....	9
2.2.1. Connecting Power to Parani-SD .....	9
2.2.2. Connecting Device to Parani-SD .....	9
2.2.3. Attaching Battery Pack to Parani-SD200LL.....오류! 책갈피가 정의되어 있지 않습니다.	
<b>3. Configuration</b>	<b>10</b>
3.1. Operation Modes.....	10
3.2. LED Indicators.....	11
3.3. Serial Ports.....	11
3.3.1. Data Bit .....	11
3.3.2. Hardware Flow Control .....	11
3.3.3. Reset to Factory Defaults .....	12
3.3.4. Dipswitch.....	12
3.3.5. Pairing Button .....	13
3.3.6. Software and Utility .....	13
3.3.7. ParaniWIN.....	14
3.3.8. ParaniUpdater .....	20
3.3.9. Terminal Program .....	20
<b>4. Approval Information</b>	<b>22</b>
4.1. FCC .....	22
4.1.1. FCC Compliance Statement .....	22
4.1.2. RF Exposure Statement.....	22
4.1.3. Do not.....	22
4.2. CE .....	22
4.2.1. EC-R&TTE Directive .....	22
<b>5. RF Information</b>	<b>23</b>
5.1. Radio Frequency Range .....	23
5.2. Number of Frequency Channel.....	23
5.3. Transmission Method .....	23
5.4. Modulation Method.....	23
5.5. Radio Output Power .....	23
5.6. Receiving Sensitivity .....	23
5.7. Power Supply .....	23
<b>Appendix A: Connections</b>	<b>24</b>
A.1. Serial Port Pin Outs .....	24
A.2. Serial Wiring Diagram .....	24
A.2.1. To Host with DTE Interface.....	25
A.2.2. To Host with DCE Interface .....	25
<b>Appendix B: AT Commands</b>	<b>26</b>
B.1. Terminology.....	26
B.1.1. AT Command .....	26
B.1.1. AT Response .....	26
B.1.2. Operation Mode.....	26
B.1.3. Operation Status .....	26
B.1.4. Security.....	26
B.1.5. Symbols.....	27
B.2. Command Category.....	27
B.3. Command Description .....	28
B.3.1. ATZ←.....	28

B.3.2. AT&F↵.....	28
B.3.3. AT↵.....	28
B.3.4. AT+UARTCONFIG,Baudrate,Parity,Stopbit↵.....	28
B.3.5. AT+USEDIP?↵.....	29
B.3.6. AT+BTINFO?↵.....	29
B.3.7. AT+BTINQ?↵.....	29
B.3.8. AT+BTLAST?↵.....	29
B.3.9. AT+BTVER?↵.....	30
B.3.10. AT+BTRSSI,n↵.....	30
B.3.11. AT+BTMODE,n↵.....	30
B.3.12. +++↵.....	30
B.3.13. AT+SETESC,nn↵.....	31
B.3.14. ATO↵.....	31
B.3.15. AT+BTCANCEL↵.....	31
B.3.16. AT+BTSCAN↵.....	31
B.3.17. AT+BTSCAN,n,to↵.....	32
B.3.18. AT+BTSCAN112233445566,to↵.....	32
B.3.19. ATD↵.....	32
B.3.20. ATD112233445566↵.....	33
B.3.21. ATH↵.....	33
B.3.22. AT+BTKEY=\$string↵.....	33
B.3.23. AT+BTSD? ↵.....	34
B.3.24. AT+BTCSD↵.....	34
B.3.25. AT+BTFP,n↵.....	34
B.3.26. AT+BTSEC,Authentication,Encryption↵.....	34
B.3.27. AT+BTNAME=\$string↵.....	35
B.3.28. AT+BTLPM,n↵.....	35
B.3.29. AT+DFU↵.....	35
B.3.30. AT&V↵.....	35
B.3.31. AT\$nn? ↵.....	35
B.3.32. AT\$nn=mm↵.....	36
B.4. Command Validity .....	36
<b>Appendix C: S-Register</b> .....	<b>38</b>
C.1. S1: Force to Reconnect (default 1).....	38
C.2. S2: Enable Hardware Flow Control (default 1).....	38
C.3. S3: Stream UART Policy (default 0) .....	38
C.4. S4: Enable Remote Name Query (default 1).....	38
C.5. S6: Enable Low Power Mode (default 0).....	39
C.6. S10: Enable SD Response (default 1) .....	39
C.7. S11: Enable Escape (default 1) .....	39
C.8. S12: Clear Data Buffer When Disconnected (default 0).....	39
C.9. S14: Enable DTR Transfer (default 1) .....	39
C.10. S15: Enable Disconnect by DTR (default 0).....	39
C.11. S22: Fast Connect (default 0).....	39
C.12. S24: Maximum Number of Inquiry Result (default 10) .....	40
C.13. S28: Escape Sequence Character (default 43).....	40
C.14. S31: Page Timeout (default 300).....	40
C.15. S33: Inquiry Timeout (default 30) .....	40
C.16. S37: Supervision Timeout (default 16000) .....	40
C.17. S46: BD Address of Last Connected Device.....	40
<b>Appendix D: Trouble Shooting</b> .....	<b>41</b>
D.1 No Data Transmission .....	41
D.1.1 COM Port Settings .....	41
D.1.2 Pin Assignment.....	41
D.2 Data Loss or Malfunctioning .....	41
D.2.1Hardware Flow Control.....	41

D.2.2 AT Response .....	41
D.3 Transmission Delay .....	42
D.3.1 RF Processing Delay.....	42
D.3.2 RF Transmission Environment .....	42

# 1. Introduction

## 1.1. Overview

Parani-SD is a terminal device for wireless serial communication using the Bluetooth technology that is international standard of short range wireless communications. Parani-SD accomplishes more reliable wireless communication. As Parani-SD can communicate with other Bluetooth devices, user may construct various communications with it.

Parani-SD provides several models with different communication ranges from 30m (Parani-SD200L) up to 100m (Parani-SD100L) for user's various applications. In terms of noise, Parani-SD delivers better quality of communication than standard RS232 cables.

Parani-SD has the most compact design of the same kind devices and can be placed conveniently into any devices or equipments. Its detachable antenna of variety optimizes the quality and distance of wireless communications.

Parani-SD can be configured and controlled by typical AT commands. User can easily configure Parani-SD on the terminal program such as HyperTerminal and implements the wireless communication without modifying user's existing serial communication program. In addition to the basic AT commands, Parani-SD provides some expanded AT commands for its various functions. User friendly ParaniWIN is also provided for easy setup on Microsoft Windows. Also, user can setup the serial port parameters by dipswitch without PC.

The FHSS (Frequency Hopping Spread Spectrum) technique of Bluetooth lets Parani-SD have less radio interference and no danger of hacking in air. Parani-SD also supports authentication and data encryption.

## 1.2. Package Check List

- Parani-SD100L/200L external box
- Stub Antenna
- DC 5V Power Cable
- USB Power Cable
- DC Power Adapter
- [A hardcopy of Quick Start Guide](#)
- CD-ROM [including the HelloDevice Manager and User Guide](#)

### 1.3. Product Specification

	SD100L	SD200L
<b>Serial Interface</b>	One male DB9 serial port for data communication Serial speeds 1200bps to 230400bps Flow Control: None, Hardware RTS/CTS Signals: Rx, Tx, RTS, CTS, DTR, DSR, GND	
<b>Bluetooth Interface</b>	Bluetooth v1.2 Protocol: RFCOMM, L2CAP, SDP Profile: General Access Profile, Serial Port Profile	
	Class 1	Class 2
	Level: 18dBm	Level: 2dBm
	Working distance : 100m	Working distance : 30m
<b>Configuration</b>	ParaniWIN, Modem AT command set	
<b>Firmware Update</b>	ParaniUpdater for SD&ESD	
<b>Diagnostic LED</b>	Power / Charging finish Standby / Charging Connect Serial RX Serial TX	
<b>Power</b>	Supply voltage: DC 5V/2A, AC100~240V/50~60Hz Battery voltage : DC 4.2V / 230mA	
	Common Power supply options: Power via a standard AC-plug DC-adapter Power via USB power cable Power via DC power cable Power via pin 9 of DB9 connector	
<b>Environmental</b>	Operating temperature: -10 ~ 55 °C Humidity : 95% (Non-condensing)	
<b>Physical properties</b>	Dimension 96 mm L (3.6 in.) 31 mm W (1.2 in.) 16 mm H (0.6 in.)	
	Weight 20 g	Weight 23 g
<b>Approvals</b>	FCC	
<b>Warranty</b>	1-year limited warranty	

# 2. Getting Started

This chapter describes how to set up the Parani-SD Series for the first time.

- 2.1 *Panel Layout* explains the panel layout.
- 2.2 *Connecting the Hardware* describes how to connect the power, the serial device, and the battery pack to the Parani-SD Series.

Following items are pre-required to get started.

- One DC power adapter, USB power cable or DC power cable (included in the package).
- One PC with RS232 serial port.
- Terminal emulation program running on the PC

## 2.1. Panel Layout

This section describes the panel layout of the Parani-SD.

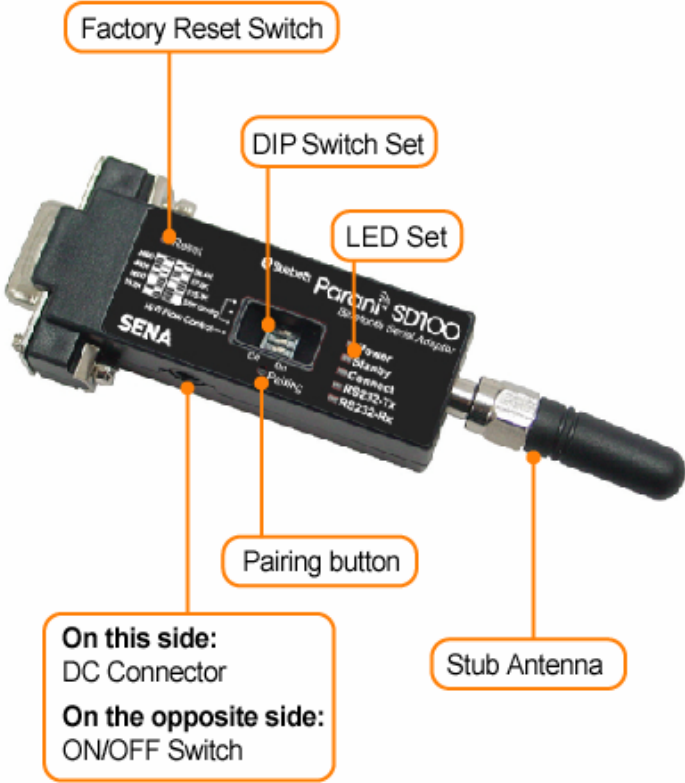


Figure 2-1 The panel layout of Parani-SD100L/200L



## 2.2. Connecting the Hardware

This section describes how to connect the Parani-SD Series to the serial device for initial testing.

- Connect a power source to the Parani-SD Series.
- Connect the Parani-SD Series to a serial device.

### 2.2.1. Connecting Power to Parani-SD

Connect the power jack to the power connector of the Parani-SD Series using the DC power adapter, USB power cable or DC power cable that is included in the package. If power is properly supplied, the [Power] lamp will light up a solid green color.

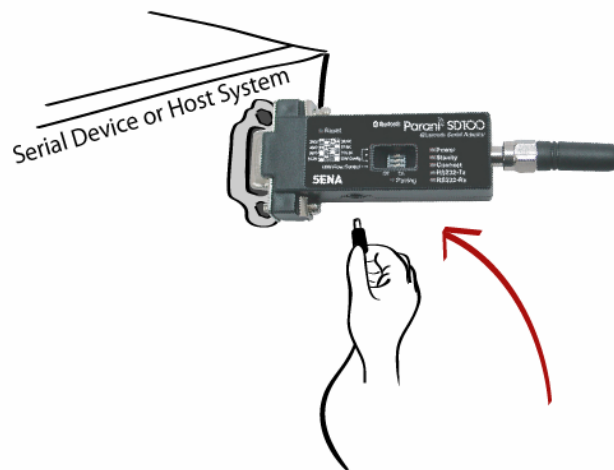


Figure 2-2 Connecting Power to Parani-SD200L

### 2.2.2. Connecting Device to Parani-SD

Connect the serial device to the Parani-SD Series as shown below.

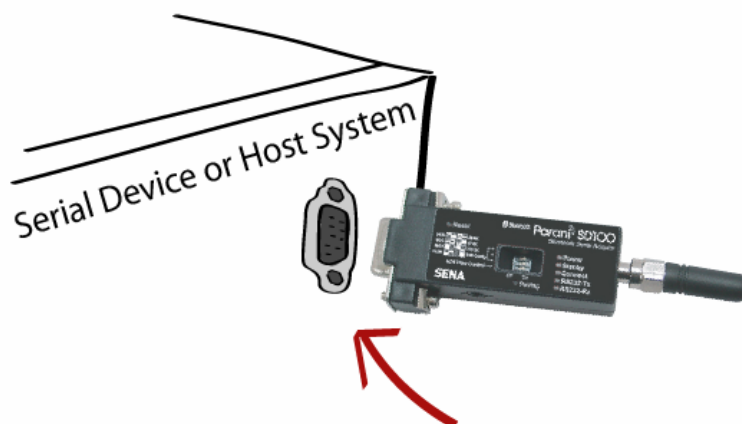


Figure 2-3 Connecting a Serial Device to Parani-SD

### 3. Configuration

#### 3.1. Operation Modes

In addition to the serial port configurations such as bit/second, data bit, parity, stop bit, flow control, Parani-SD has some configurations for Bluetooth. For getting the most out of Parani-SD, user should understand the following Bluetooth connection schemes.

A Bluetooth device can play a role as a master or slave. Master tries to connect itself to other Bluetooth device, and slave is waiting to be connected from other Bluetooth devices. A Bluetooth connection is always made by a pair of master and slave. A slave can be in two modes, Inquiry Scan or Page Scan mode. Inquiry Scan mode is waiting the packet of inquiry from other Bluetooth devices and Page Scan mode is waiting the packet of connection from other Bluetooth devices. Every Bluetooth device has its unique address, called BD (Bluetooth Device) address, which is composed of 12 hexa-decimal numbers.

Parani-SD has 4 operation modes as follows. Each mode can be identified with LED indicators as illustrated in next section.

*Table 3-1 The Parani-SD Operation Modes*

Mode	Description
<b>Mode0</b>	Parani-SD must be in Mode0, when it is directly controlled by AT commands. In this mode, there is no response when power on or software reset, and Parani-SD is just waiting for AT command input. Neither master nor slave is assigned to Parani-SD in mode0. User can change the configurations of Parani-SD in this mode. The factory default is set to Mode0.
<b>Mode1</b>	Parani-SD tries to connect the last connected Bluetooth device. Parani-SD in Mode1 is to be a master and tries to connect the last connected Bluetooth device. Parani-SD always stores the BD address of the Bluetooth device to which Parani-SD has connected last time. When Parani-SD is initially used or after hardware reset, there is no BD address stored in Parani-SD. In this case, Mode1 does not make any sense and mode change from other operation modes to Mode1 is not allowed. The mode change to Mode1 can be made after Parani-SD succeeds to connect to other Bluetooth device in Mode0. Once changed to Mode1, Parani-SD will try to connect automatically the last connected Bluetooth device whenever power on or software reset. Parani-SD in Mode1 cannot be discovered or connected by other Bluetooth devices.
<b>Mode2</b>	Parani-SD is waiting for the connection from the last connected Bluetooth device. Parani-SD in Mode2 is to be a slave and waiting for the connection only from the last connected Bluetooth device. Just like Mode1, if there is no BD address stored in Parani-SD, the mode change from other operation modes to Mode2 is not allowed. Once changed to Mode2, Parani-SD will wait for the connection from the last connected Bluetooth device whenever power on or software reset. Parani-SD in Mode2 cannot be discovered or connected to Bluetooth devices other than the last connected device.
<b>Mode3</b>	Parani-SD is waiting for the connection from any other Bluetooth devices. Parani-SD in Mode3 acts like in Mode2, but allows any connection from other Bluetooth device. Most of general Bluetooth device is set to Mode3. Parani-SD in Mode3 can be discovered and connected from any other Bluetooth devices.

## 3.2. LED Indicators

RS232-Tx and RS232-Rx LED are blinking accordingly when data is transmitted. For small data transmission, it may be hard to recognize the quick blinking.

Table 3-2 The Parani-SD LED Indicators

Indicator	Power / Charging finish (Green LED)	Standby / Charging (Red LED)	Connect LED (Green LED)
Mode0			
Mode1			Green (every 1 sec)
Mode2			Green (every 3 sec)
Mode3			Green (every 3 sec)
Connected			Green
Connected			Green
Charging			
Charging finish			

## 3.3. Serial Ports

The applicable settings for serial ports are as follows.

Table 3-3 The Parani-SD Serial Port Settings

Serial Port Settings	Values
Baud rate	1200, 2400, 4800, <span style="border: 1px solid black; padding: 2px;">9600</span> , 19200, 38200, 57600, 115200, 230400
Data bite	<span style="border: 1px solid black; padding: 2px;">8</span>
Parity	<span style="border: 1px solid black; padding: 2px;">No parity</span> , Even parity, Odd parity
Stop bit	<span style="border: 1px solid black; padding: 2px;">1</span> , 2
Hardware Flow Control	Use, No Use

The values in box are the factory defaults. The flow control setting is configurable only through dip switch.

### 3.3.1. Data Bit

Parani-SD supports only 8 data bit. In the case of 7 data bit, please contact the technical support.

### 3.3.2. Hardware Flow Control

Parani-SD plugged into its host system transmits data from host to the other side Bluetooth device. These data is saved temporarily in the internal buffer of Parani-SD and sent repeatedly until the transmission is completed packet by packet. When the radio transmission condition is not good enough to send data promptly, it can cause the transmission delay. If the host sends more data when the buffer is full, buffer overflow will make Parani-SD malfunction consequently. In order to prevent this buffer overflow, Parani-SD works as follows.

In case of using hardware flow control, Parani-SD makes RTS be 'disable' to stop receiving further data from the host when the buffer becomes full. RTS will be 'able' to begin receiving data again from the host when the buffer has some room for more data.

In case of not using hardware flow control, Parani-SD clears the buffer to secure the room for next data when the buffer becomes full. This means the loss of data. As the transmission data becomes large, the possibility of data loss goes higher.

For large data transmission, use of hardware flow control is highly recommended.

### 3.3.3. Reset to Factory Defaults

To turn back all the configurations to its factory settings, press the reset button depicted in Fig. 1-3. Press the reset button with a narrow pointed tool like paper clip longer than 1 second. Reset works only when power is on.

### 3.3.4. Dipswitch

This feature is only on Parani-SD205. With the combination of 4 slot dipswitches, baud rate and hardware flow control can be set simply without host computer.

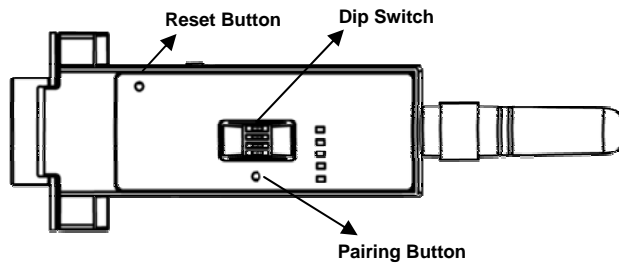


Figure 3-1 The Parani-SD Dipswitch

Upper 3 dipswitches are used for setting baud rate, and bottom dipswitch is used for setting hardware flow control option. If the baud rate needs to be set out of the range given below, ParaniWIN or terminal program should be used for extended AT commands. At this time combination of dipswitches must be complied with AT cmd. Then baud rate will go back to 9600 as default.

Table 3-4 Baud rate Settings by Dipswitches

Baud rate	2400	4800	9600	19.2K	38.4K	57.6K	115.2K	AT cmd

Table 3-5 Hardware Flow Control Settings by Dipswitches

Hardware Flow Control Handshaking	No Use	Use

### 3.3.5. Pairing Button

Parani-SD provides Pairing Button for instant configuration without PC to make an automatic connection between two Parani-SDs. For convenience sake, name two Parani-SDs as SD1 and SD2 respectively.

**Step 1.** Turn off all the nearby Parani-SD

**Step 2.** Turn on SD1 and SD2 and hardware reset both of them by pressing Reset Button.

**Step 3.** Press the Pairing Button of SD1 for 2 seconds until Standby LED turns off and Connect LED blinks 3 times every 2 seconds. Keep the power ON.

**Step 4.** Press the Pairing Button of SD2 for 2 seconds until Standby LED turns off and Connect LED blinks 3 times every 2 seconds. Now press again the Pairing Button for 2 seconds until Connect LED blinks every 0.5 second.

**Step 5.** Wait for SD1 & SD2 to be connected for a while until Connect LED's of SD1 and SD2 is lit in green. It takes about 10 seconds to make a connection. If there are many Bluetooth devices nearby, it will take a little bit more.

**Step 6.** Turn SD1 off and on. Connect LED blinks twice in green every 3 seconds.

**Step 7.** Turn SD2 off and on. Connect LED blinks once in green every 1 second.

**Step 8.** Now a pair of Parani-SD is configured to make automatic connection, whenever power off and on.

Just use this pair of Parani-SD like virtual serial cable.

\* Note: While pairing is progressing by the pairing buttons, the Command Response will be inactivated automatically. Then, Parani-SD will not send the response messages such as OK, Connect and Disconnect.

*Table 3-6 Pairing Process by Pairing Button*

SD1	Status	LED	SD2	Status	LED
1. Hard reset	Mode0	Standby LED turns on	1. Hard reset	Mode0	Standby LED turns on
2. Push pairing button	Mode3	Connect LED blinks 3 times every 2 seconds	2. Push pairing button	Mode3	Connect LED blinks 2 times every 2 seconds
			3. Push pairing button again	Mode1	Connect LED blinks every 0.5 seconds
4. Connected	Slave	Connect LED is lit in green	4. Connected	Master	Connect LED is lit in green

### 3.3.6. Software and Utility

This configuration software and utility for firmware update comes with the product, which also can be downloaded from <http://www.sena.com>

*Table 3-7 Configuration Software*

Software	Purpose	Operating System
ParaniWIN	Configuration	MS Windows 98SE or Higher
ParaniUpdater	Firmware Update	MS Windows 98SE or Higher

### 3.3.7. ParaniWIN

ParaniWIN is a program running on Microsoft Windows for the configuration of Parani-SD. Install ParaniWIN on your computer. Plug a Parani-SD into the serial port of the computer and turn on the power. Run ParaniWIN.

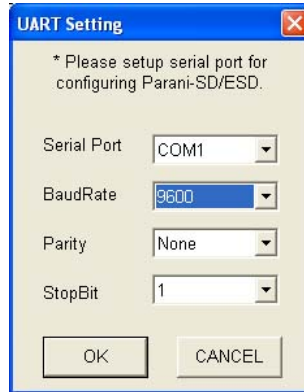


Figure 3-2 Serial Port Setting

Set each option properly and click [Confirm]. If the settings are different from the host computer, error message will pop up. If the Parani-SD is in the status of connection, warning message will pop up. Then the current connection can be cancelled by [Disconnect] button on the main window.



Figure 3-3 Error Message Box

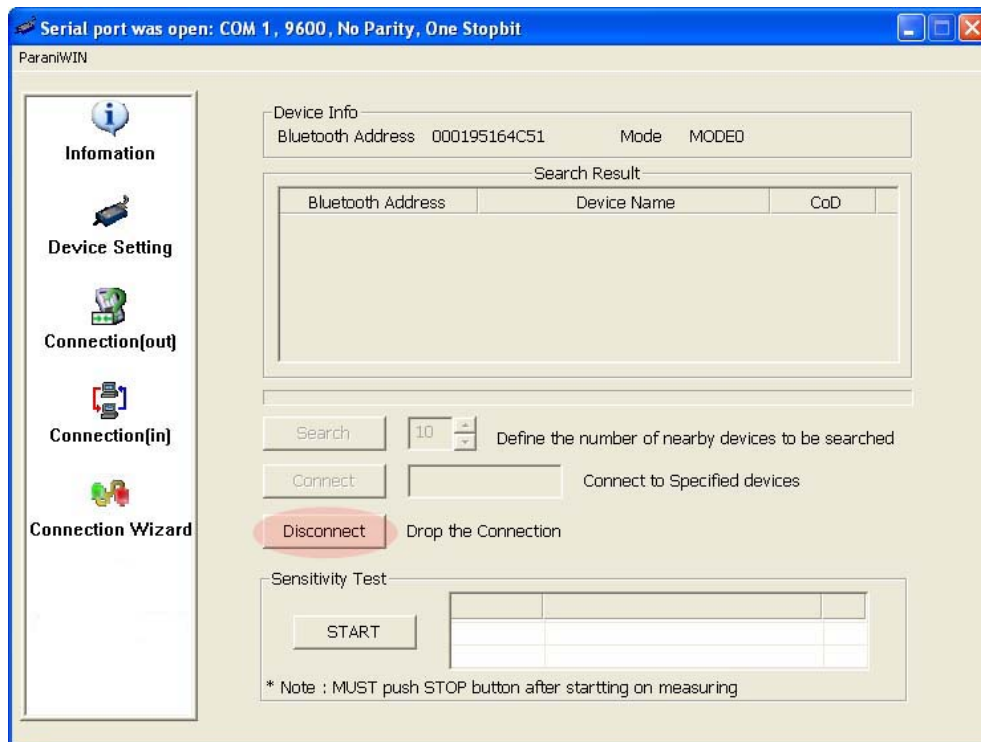


Figure 3-4 Main Window

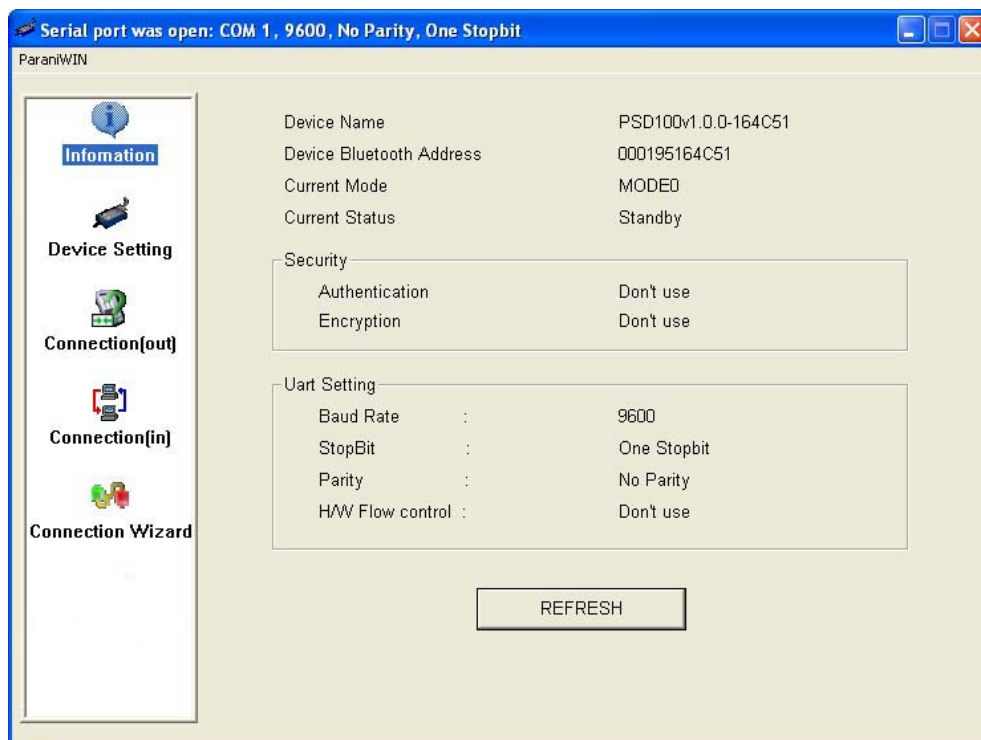


Figure 3-5 Information Window

Serial port settings can be changed by <Start Configuration> and <ParaniWIN Configuration> of ParaniWIN in the menu bar at upper left corner of the window without re-running the ParaniWIN program.

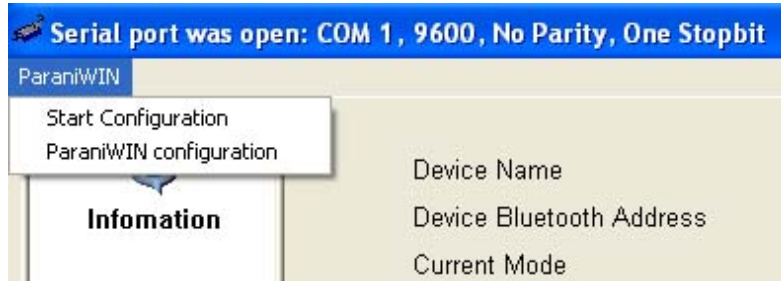


Figure 3-6 Menu Bar at Upper Left corner of ParaniWIN

The icons in the left side window come to the corresponding windows.

In device configuration window, hardware reset can be executed or operation mode and RS232 can be configured as well. Security option also can be configured in this window.

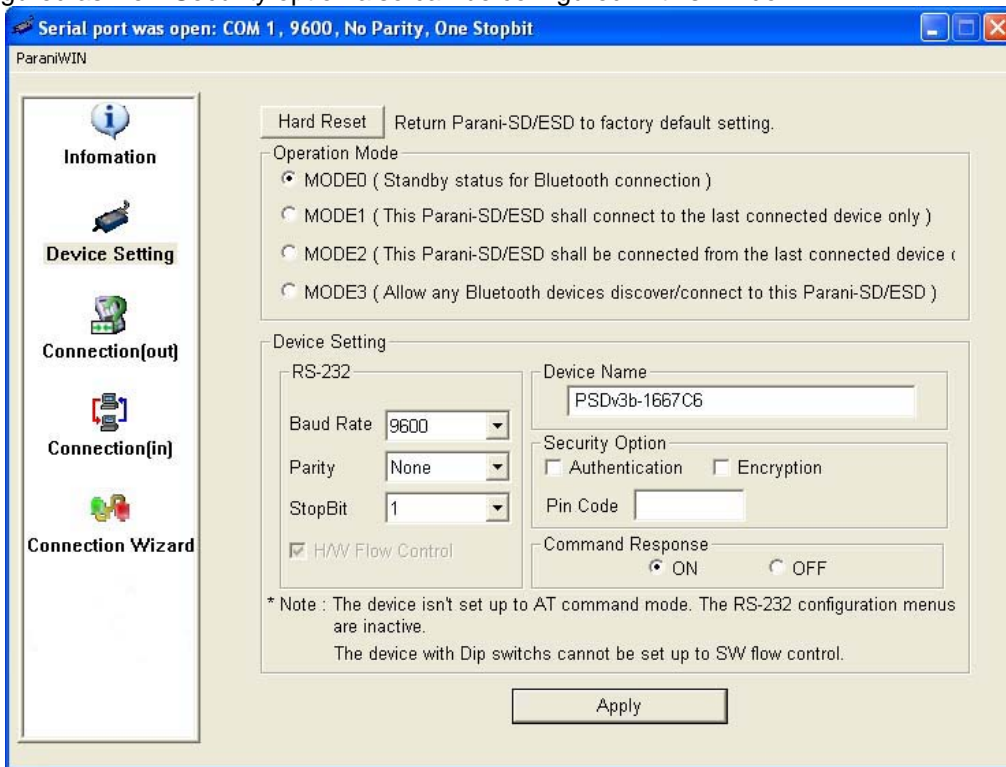


Figure 3-7 Device Setting Window

Parani-SD supports two security options, Authentication and Encryption. If you check the Authentication option, you must also enter the Pin Code value. If the authentication is activated, the connection, only between the Master and Slave device that share the same Pin Code, is established. In case that Parani-SD connects to other Bluetooth device that enables authentication, you must know the other device's Pin Code. In general Bluetooth devices, 1234 or 0000 is used as a default value. If you check Encryption option, the Parani-SD encrypts packets and sends them. The Encryption options works well in case that only one between Master and Slave uses this option.



Parani-SD has 4 response messages, 'OK', 'ERROR', 'CONNECT', and 'DISCONNECT'. In some cases, these responses can affect the host system unexpectedly. To prevent this, user can set the Command response to ON or OFF.

For Parani-SD100L/200, hardware flow control can be configured only by dip switch. Thus H/W Flow Control option will not work in this case. **When the dipswitch value isn't ATcommand mode, the RS-232 menu will be disabled.**

Click [Apply] button to reflect the given options to Parani-SD actually.

Connect(out) icon will show the following window to search and connect other Bluetooth devices.

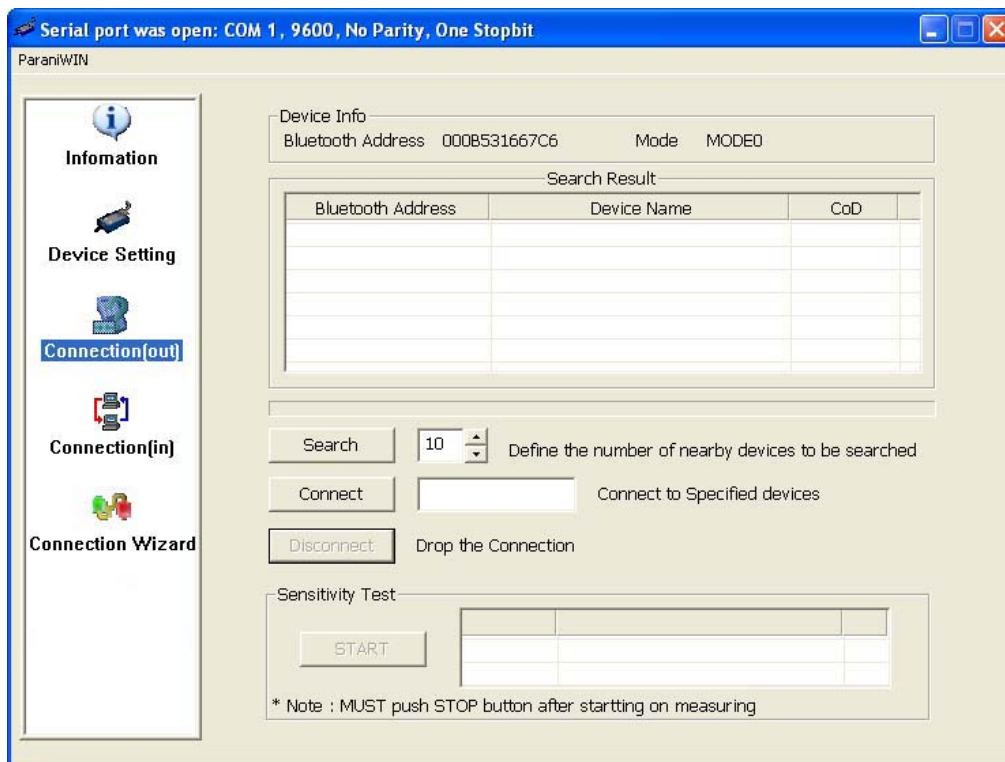


Figure 3-8 Connect(out) Window

Click [Search] button to search nearby Bluetooth devices. The maximum number of devices to be searched can be controlled. Select one of the devices searched and click [Connect] button. The selected Bluetooth device must be in Page scan mode. Click [Disconnect] button to cancel the connection normally.

**After the connection is established, you are able to test sensitivity by pushing the START button.**

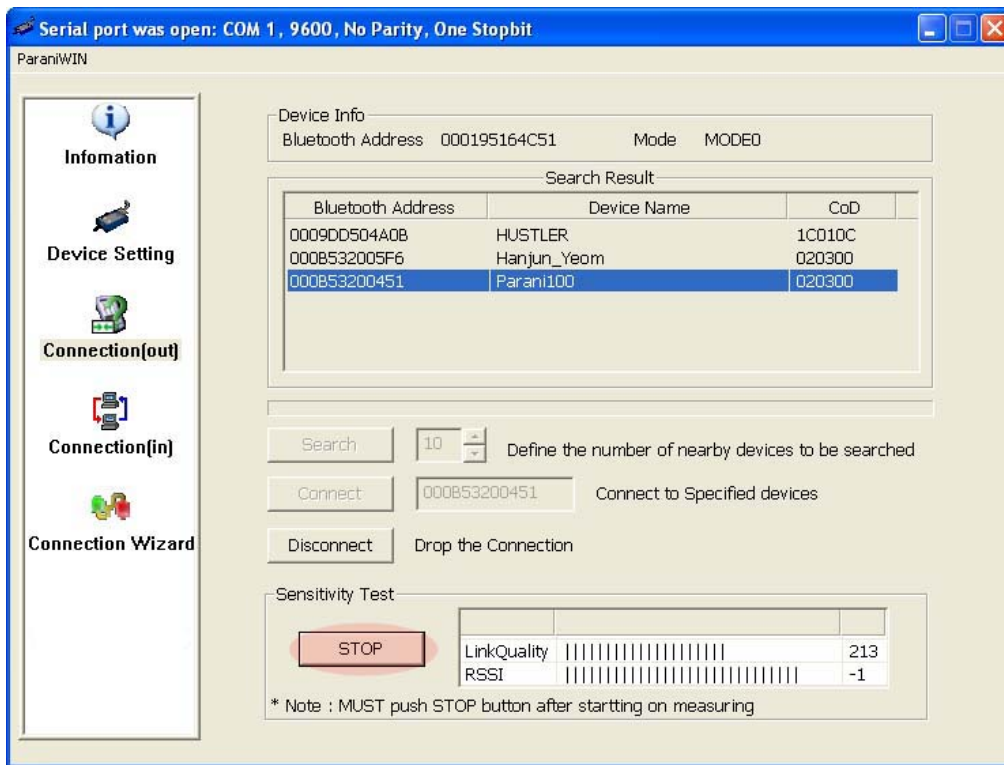


Figure 3-9 Sensitivity Test

The sensitivity test shows LnkQuality and RSSI values. The sensitivity is fine, If the LinkQuality is closer to 255 and RSSI is closer to 0. In general, the sensitivity is the best when the distance is 10 meters. You can push the STOP button in order to terminate the sensitivity test. The sensitivity test will continue until the STOP button is pushed. If you close the ParaniWIN Window without pushing the STOP button, you must restart Parani-SD to terminate the test.

Connection(in) icon will show the following window to make Parani-SD wait to a connection from the other Bluetooth device. The waiting time in seconds can be controlled. With 0 input for this waiting time, Parani-SD keeps waiting for connection until [Cancel] button is clicked.

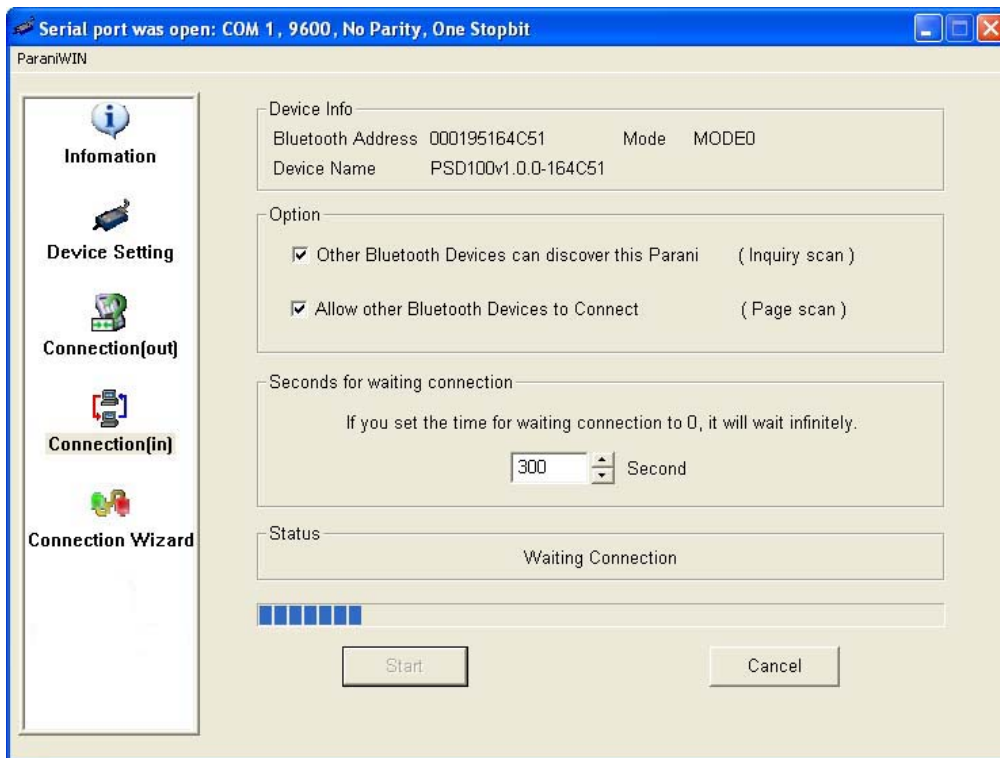


Figure 3-10 Connection(in) Window

If the Connection Wizard icon is clicked, an easy pairing menu to use appears as follows:

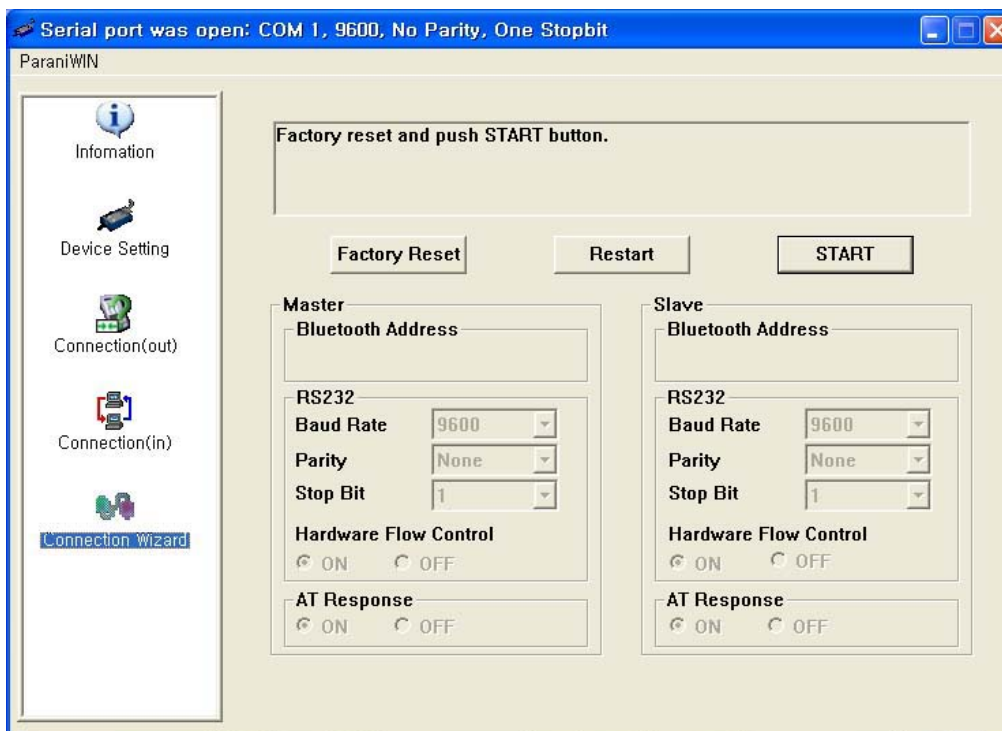


Figure 3-11 Connection Wizard Window

This menu make easy pairing configuration of Parani-ESD that hasn't pairing button. Although this menu can be used to pairing configuration of Parani-SD that has pairing button, pairing configuration by pairing button is recommended. To use this menu, follow next steps.

**Step 1.** Connect the first SD and then push the START button.

**Step 2.** Disconnect the first SD, connect the second ESD and then push the Next button after setting up Slave configuration. At this time, the dip switch value should be ATcommand mode. The flow control setting can be changed only through dip switch.

**Step 3.** Disconnect the second SD, once again connect the first ESD and then push the Finish button. The pairing configuration finished. Make sure that each SD's connect LED is on. From now, when the SD restarts the pairing connection will be established automatically.

### 3.3.8. ParaniUpdater

Parani-SD support firmware update. You can download new firmwares of Parani-SD at <http://www.sena.com>. With ParaniUpdater, you can update firmware of Parani-SD by selecting the firmware image file and pushing Start button.

\* Note: DO NOT power off Parani-SD while the firmware update is progressing. It may damage the firmware seriously.

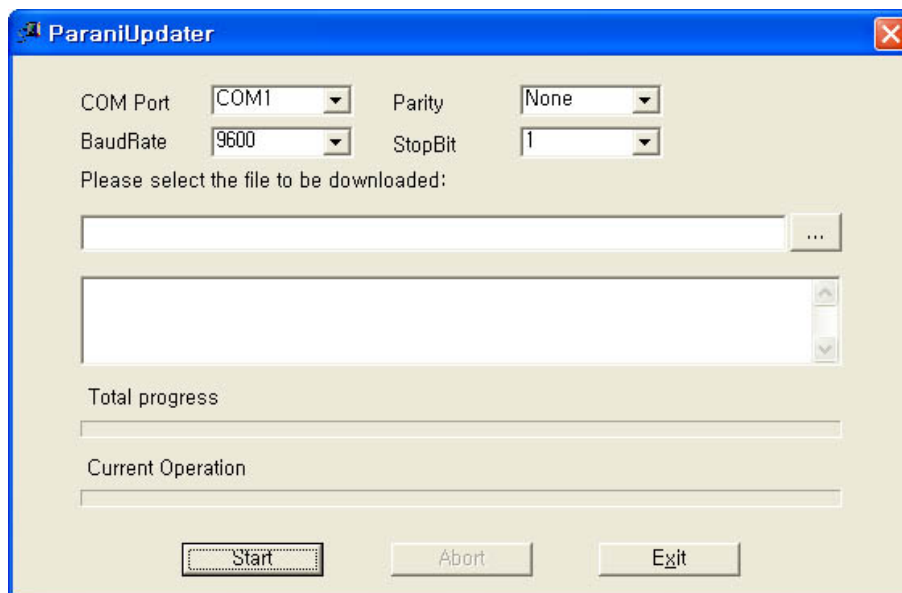


Figure 3-12 ParaniUpdater Window

### 3.3.9. Terminal Program

A terminal program is an application that will enable a PC to communicate directly with a modem. If you are using Windows 98SE or higher version of Windows, HyperTerminal program as it is included as part of the operating system. Parani-SD provides some extended AT commands for its configurations on terminal program.

This manual will explain the method using HyperTerminal. If you need to install HyperTerminal, click start>setting>control panel>add/remove programs. For more precise information, please refer to Help of Microsoft Windows.

Attach Parani-SD to serial port of host computer and power on. Check Connect LED and Standby LED. Their status may be as follows:

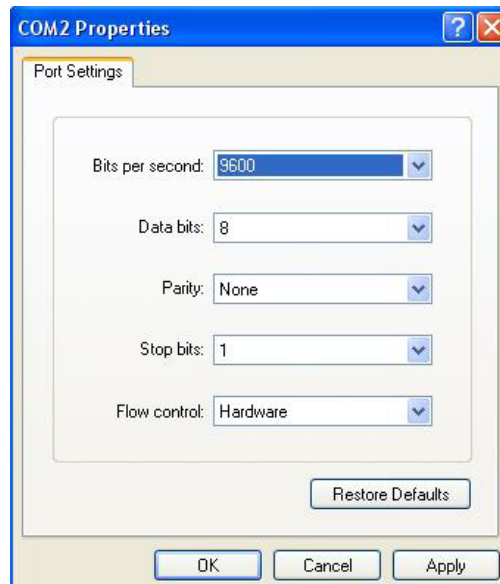
*Table 3-8 Connect LED and Standby LED status*

Connect LED	Standby LED	Meanings
On	Off	Connected to somewhere
Blinking	Off	Connecting to somewhere or waiting for incoming connection.
Off	On	Waiting for AT commands.

Launch HyperTerminal. It can be found in start >programs >accessories >communication >HyperTerminal. Select the Serial port that Parani-SD will be connected to.

Input the same settings into Serial port configuration window as Parani-SD settings.

The settings need to be set correctly, otherwise, error message may be shown up on the screen or cause malfunctioning of Parani-SD.



*Figure 3-13 HyperTerminal*

Choose the settings in File->Properties->Settings->ASCII setup that let you turn echo on in HyperTerminal; this will show the response Parani-SD sends on the screen.

You now get the HyperTerminal window where you are able to control Parani-SD with AT commands. For expanded AT commands that Parani-SD provides, please refer to Appendix A. AT commands. Example of AT commands:

```

AT+BTINFO?
000B53000509,PSDv3b-000509,MODE0,STANDBY,0,0,HWFC

OK
AT+BTINQ?
000B5320007E,PSDv2a-20007E,001F00

0004B300E205,AP2002:1 #0,020300

OK
ATD000B53000509
OK

CONNECT 000B53000509
    
```

## 4. Approval Information

### 4.1. FCC

#### 4.1.1. FCC Compliance Statement

This device complies with part 15 of the FCC Rules. Operation is subject to the following two conditions:

- (1) This device may not cause harmful interference, and
- (2) This device must accept any interference received,

Including interference that may cause undesired operation

#### Information to User

This equipment has been tested and found to comply with the limits for a Class B digital device, Pursuant to part 15 of the FCC Rules. These limits are designed to provide reasonable protection against harmful interference in a residential installation.

This equipment generates, uses and can radiate radio Frequency energy and, if not installed and used in accordance with the instructions, may cause harmful interference to radio communications.

However, there is no guarantee that interference will not occur in a particular installation. If this equipment does cause harmful interference to radio or television reception, which can be determined by turning the equipment off and on, the user is encouraged to try to correct the interference by one or more of the following measures:

- Reorient or relocate the receiving antenna.
- Increase the separation between the equipment and receiver- Connect the equipment into an outlet on a circuit different from that to which the receiver is connected.
- Consult the dealer or an experienced radio/TV technician for help.

#### 4.1.2. RF Exposure Statement

The equipment complies with FCC RF radiation exposure limits set forth for an uncontrolled environment. This device and its antenna must not be co-located or operation in conjunction with any other antenna or transmitter.

#### 4.1.3. Do not

Any changes or modifications to the equipment not expressly approved by the party responsible for compliance could void user's authority to operate the equipment.

### 4.2. CE

#### 4.2.1. EC-R&TTE Directive

EN 50385  
EN 60950  
EN 301 489-1/-17  
EN 300 328

## 5. RF Information

### 5.1. Radio Frequency Range

2.402~2.480GHz

### 5.2. Number of Frequency Channel

79 channels

### 5.3. Transmission Method

FHSS(Frequency Hopping Spread Spectrum)

### 5.4. Modulation Method

GFSK(Gaussian-filtered Frequency Shift Keying)

### 5.5. Radio Output Power

Products	Transmit Power
SD100L	+18dBm
SD200L	+2dBm

### 5.6. Receiving Sensitivity

Products	Receive Sensitivity
SD100L	-90dBm
SD200L	-80dBm

### 5.7. Power Supply

Products	Power Supply
SD100L	DC5.0~12V / BAT 4.2V
SD200L	DC5.0~12V / BAT 4.2V

# Appendix A: Connections

## A.1. Serial Port Pin Outs

Parani-SD is a DCE device compatible with RS232 standard, having DB9 female interface.

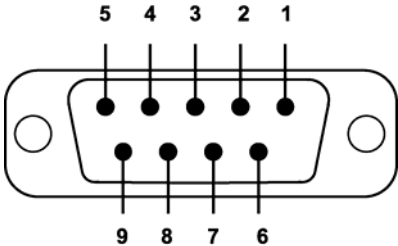


Figure A-1 Pin layout of the DB-9 female connector

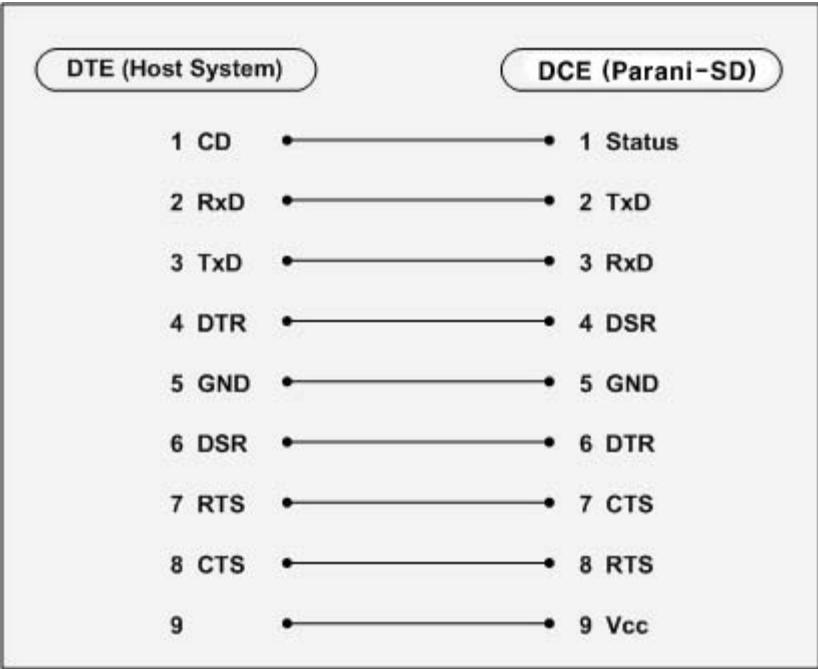
Table A-1. Pin assignment of the DB-9 female connector

Pin #	Signal	Direction	Description
1	CD	Output	Received Line Signal Detect
2	TxD	Output	Transmitted Data
3	RxD	Input	Received Data
4	DSR	Input	DTE Ready
5	GND	-	Signal Ground
6	DTR	Output	DCE Ready
7	CTS	Input	Clear to Send
8	RTS	Output	Request to Send
9	Vcc	Input	Ring Indicator

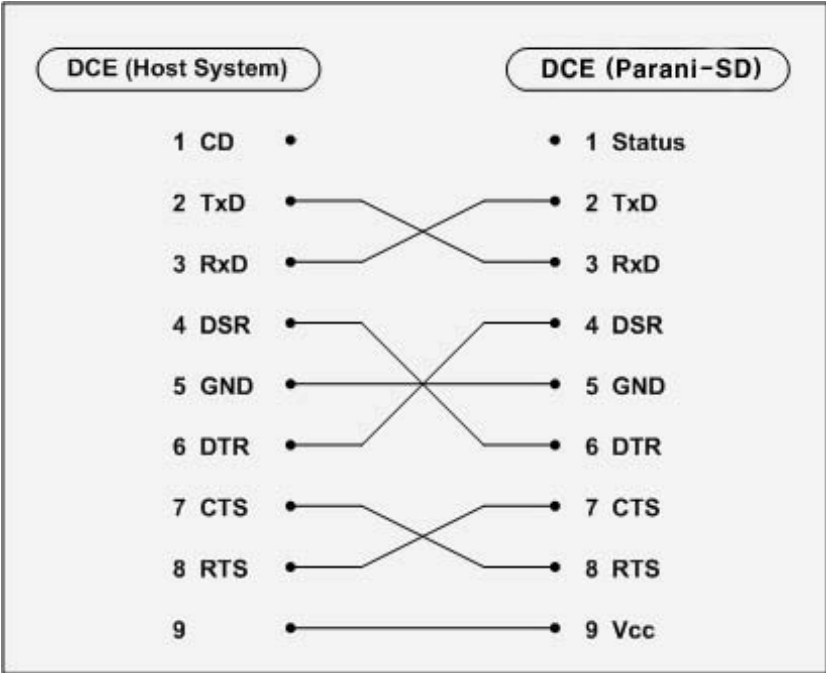
## A.2. Serial Wiring Diagram



**A.2.1. To Host with DTE Interface**



**A.2.2. To Host with DCE Interface**



## Appendix B: AT Commands

### B.1. Terminology

#### B.1.1. AT Command

AT command set is the de facto standard language for controlling modems. The AT command set was developed by Hayes and is recognized by virtually all personal computer modems. Parani-SD provides the extended AT command set to control and configure the serial parameters and Bluetooth connection.

#### B.1.1. AT Response

Parani-SD replies to AT commands with 4 kinds of message, 'OK', 'ERROR', 'CONNECT' and 'DISCONNECT'.

#### B.1.2. Operation Mode

Mode	Description
Mode0	Waiting for AT commands
Mode1	Attempting to connect the last connected Bluetooth device
Mode2	Waiting for the connection from the last connected Bluetooth device
Mode3	Waiting for the connection from any other Bluetooth device

#### B.1.3. Operation Status

Status	Description
Standby	Waiting for AT commands
Pending	Executing tasks
Connect	Executing tasks

#### B.1.4. Security

Security	Description
Authentication	Pin Code (or Pass key)
Encryption	Data encryption

## B.1.5. Symbols

The symbols are used for the description of command syntax as follows:

Symbols	Meaning	ASCII Code
↵	Carriage return	0x0D
↵	Line feed	0x0A
↵↵	Carriage return + Line feed	
Ⓜ	Bluetooth device address	
N or m	One digit decimal number	
to	Timeout in seconds	

## B.2. Command Category

Command Category	Index	AT Commands	
RESET	1	ATZ	
	2	AT&F	
SERIAL PORT	3	AT	
	4	AT+UARTCONFIG,b,p,s	
	5	AT+USEDIP?	
BLUETOOTH	Information	6	AT+BTINFO?
		7	AT+BTINQ?
		8	AT+BTLAST
	Mode	9	AT+BTMODEn
	Status	10	+++
		11	AT+SETESC,nn
		12	ATO
		13	AT+BTCANCEL
		14	AT+BTSCAN
		15	AT+BTSCAN,n,to
	16	AT+BTSCAN112233445566,to	
	Connection	17	ATD
		18	ATD112233445566
		19	ATH
	Security	20	AT+BTKEY=\$string
		21	AT+BTSD?
22		AT+BTCSD	
23		AT+BTFTP,n	
24		AT+BTSEC,a,e	
Miscellaneous	25	AT+BTNAME=\$string	
	26	AT+BTLPM,n	
S-REGISTER	27	AT&V	
	28	ATSnn?	
	29	ATSnn=mm	

## B.3. Command Description

### B.3.1. ATZ↵

<b>SD Response</b>	↵OK↵
<b>Purpose</b>	Software Reset
<b>Description</b>	This is the same effect as power off and on. This command disconnects Bluetooth device, and stops ongoing task. After rebooting, the status is decided by the preset operation mode. Some AT commands need ATZ to take effect.
<b>Reference</b>	AT&F, AT+BTCSD, AT+UARTCONFIG

### B.3.2. AT&F↵

<b>SD Response</b>	↵OK↵
<b>Purpose</b>	Hardware reset
<b>Description</b>	This is the same effect as initialization by reset button. All parameters are initialized to factory defaults. The storage of Parani-SD is cleared completely.
<b>Reference</b>	ATZ

### B.3.3. AT↵

<b>SD Response</b>	↵OK↵
<b>Purpose</b>	Check the connection status with host equipment
<b>Description</b>	Check if the connection to host equipment is normal. The serial parameters of Parani-SD must be same as those of host equipment. If not, SD response is none or 'ERROR' or abnormal sequence of strings.
<b>Reference</b>	AT+UARTCONFIG, ATZ, AT&F

### B.3.4. AT+UARTCONFIG,Baudrate,Parity,Stopbit↵

<b>SD Response</b>	↵OK↵
<b>Purpose</b>	Set Serial parameters
<b>Parameters</b>	Baudrate=1200/2400/9600/14400/19200/38400/57600/115200/230400 (Default=9600) Parity=N/E/O (Default=N) Stopbit=1/2 (Default=1)
<b>Description</b>	The Serial parameters can be set or changed. The factory default is 9600, N, 1. To take effect of this command, ATZ or power off and on.
<b>Reference</b>	AT, ATZ, AT&F, ATS
<b>Example</b>	AT+UARTCONFIF,9600,N,1

### B.3.5. AT+USEDIP?↵

<b>SD Response</b>	↵m↵
<b>Purpose</b>	Check the Baud rate set by dip switch
<b>Description</b>	m=0: Set to 'AT cmd' m=1: Set to other than 'AT cmd'
<b>Reference</b>	AT, ATZ, AT&F, ATS

### B.3.6. AT+BTINFO?↵

<b>SD Response</b>	↵112233445566,DeviceName,Mode,Status,Auth,Encryp,FlowControl↵ ↵OK↵
<b>Purpose</b>	Display Bluetooth settings
<b>Description</b>	The current Bluetooth settings are displayed including BD address, Device name, Operation mode, Operation status, Authentication, Data Encryption, and Hardware Flow Control. The initial value of Device name is 'PSD100Lv1.0.0-445566'. PSD stands for Parani-SD, v1.0.0 for the version of firmware, and 445566 for the last 6 digits of BD address. Mode=MODE0/MODE1/MODE2/MODE3 Status=STANDBY/PENDING/CONNECT Auth=0/1 (Authentication is not activated when 0) Encrypt=0/1 (Encryption is not activated when 0) FlowControl=HWFC/NoFC
<b>Reference</b>	AT+BTNAME, AT+BTMODE, AT+BTSEC, ATS14?
<b>Example</b>	↵000B530011FF,SENA,MODE0,PENDING,1,1,HWFC↵

### B.3.7. AT+BTINQ?↵

<b>SD Response</b>	↵112233445566,FriendlyName,CoD↵ ↵112233445566,FriendlyName,CoD↵ ↵112233445566,FriendlyName,CoD↵ ↵OK↵
<b>Purpose</b>	Search Bluetooth devices nearby
<b>Description</b>	The Bluetooth devices in Inquiry scan mode nearby are displayed with their BD addresses, Device names, and Class of device. Maximum 10 devices are scanned for 30 seconds.
<b>Reference</b>	AT+BTSCAN, ATD, AT+BTINFO?

### B.3.8. AT+BTLAST?↵

<b>SD Response</b>	↵112233445566↵
<b>Purpose</b>	Display the BD address of the last connected device
<b>Description</b>	The Bluetooth device connected to this Parani-SD last time is displayed with its BD address.

Reference	AT+BTSCAN, ATD, AT+BTINFO?, AT+BTINQ?
-----------	---------------------------------------

### B.3.9. AT+BTVER?↵

SD Response	↵SD100Lv1.0.0↵ ↵OK↵
Purpose	Display device firmware version
Description	Display device firmware version
Reference	AT+BTINFO?

### B.3.10. AT+BTRSSI,n↵

SD Response	↵OK↵ ↵0,255,0,0↵ (repeatedly)
Purpose	Test sensitivity
Parameters	n=0: Start sensitivity test n=1: Stop sensitivity test
Description	When Bluetooth connection is established, you can use this command in Standby status. The sensitivity will be displayed repeatedly in order of Status, LinkQuality, Status, RSSI. If the LinkQuality is close to 255 and RSSI is close to 0, the sensitivity is not bad.
Example	+++ AT+BTRSSI,1 ↵OK↵ 0,255,0,0

### B.3.11. AT+BTMODE,n↵

SD Response	↵OK↵
Purpose	Set operation mode
Parameters	n=0: MODE0 (Default) n=1: MODE1  n=2: MODE2 n=3: MODE3
Description	When the operation status is 'Pending' currently, change the status to 'Standby' with AT+BTCANCEL prior to this command. To take effect of this command, ATZ or power off and on
Reference	AT+BTINFO?
Example	AT+BTMODE,2 ↵OK↵ ATZ

### B.3.12. +++↵

<b>SD Response</b>	↵OK↵
<b>Purpose</b>	Convert the operation status of 'Connect' to 'Standby'
<b>Description</b>	In 'Connect' status, data from host is transmitted to the other side Bluetooth device, and any AT command is not accepted but this command, which is not echoed on the screen. When Parani-SD encounters a character '+' from host, it stops the data transmission and waits for next 2 characters. If the next 2 characters aren't both '+', it restart to transmit data including the first '+' as well. If not, it converts the operation status to 'Standby'. If the data from host includes '+++', it will convert the operation status to 'Standby' unexpectedly. Notice that Parani-SD holds data transmission when it encounters '+', until receiving next character. '+' is an escape sequence character by default, which is changeable by AT+SETESC.
<b>Reference</b>	AT+SETESC, ATO, AT+BTCANCEL

### B.3.13. AT+SETESC,nn↵

<b>SD Response</b>	↵OK↵
<b>Purpose</b>	Change the escape sequence character
<b>Description</b>	Escape sequence character set to '+' by default is changeable. The parameter nn must be a printable character.
<b>Reference</b>	+++, ATO
<b>Example</b>	AT+SETESC,42

### B.3.14. ATO↵

<b>SD Response</b>	None
<b>Purpose</b>	Convert the operation status of 'Standby' to 'Connect'
<b>Description</b>	You can convert the operation status of 'Standby' to 'Connect' ready to transmit data.
<b>Reference</b>	+++, AT+SETESC

### B.3.15. AT+BTCANCEL↵

<b>SD Response</b>	↵OK↵
<b>Purpose</b>	Terminate a current executing task
<b>Description</b>	This terminates a current executing task, such as Inquiry scan and Page scan, then converts the operation status to 'Standby'
<b>Reference</b>	AT+BTSCAN, ATD, AT+BTINQ?

### B.3.16. AT+BTSCAN↵

<b>SD Response</b>	↵OK↵ ↵CONNECT 112233445566↵
<b>Purpose</b>	Wait for inquiry and connection from other Bluetooth devices

<b>Description</b>	This allows the inquiry and connection from the other Bluetooth devices. The operation status will be in 'Pending' after this command. When connection is made and released, the operation status is back to 'Pending'. To convert the operation status to 'Standby' AT+BTCANCEL must be used. This has the same effect as AT+BTSCAN,3,0. When connection is made with other Bluetooth device, SD response will be 'CONNECT' with its BD address.
<b>Reference</b>	ATD, AT+BTINQ?, AT+BTCANCEL

### B.3.17. AT+BTSCAN,n,to↵

<b>SD Response</b>	↵OK↵ ↵CONNECT 112233445566↵ or ↵OK↵ ↵ERROR↵
<b>Purpose</b>	Wait for inquiry and connection from other Bluetooth devices for a given duration
<b>Parameters</b>	n=1: Allows Inquiry scan n=2: Allows Page scan n=3: Allows both of Inquiry scan and Page scan to= Time duration in seconds
<b>Description</b>	For the given to, Parani-SD is waiting for the inquiry and connection from other Bluetooth devices. If the parameter of to is 0, it will wait forever. When connection is made with other Bluetooth device, SD response will be 'CONNECT' with its BD address. If there is no connection made within this time duration, SD response is 'ERROR' and the operation status becomes to 'Standby'.
<b>Reference</b>	ATD, AT+BTINQ?, AT+BTCANCEL
<b>Example</b>	AT+BTSCAN,2,30

### B.3.18. AT+BTSCAN112233445566,to↵

<b>SD Response</b>	↵OK↵ ↵CONNECT 112233445566↵ or ↵OK↵ ↵ERROR↵
<b>Purpose</b>	Wait for connection by the Bluetooth device with given BD address
<b>Parameters</b>	112233445566=BD address to= time duration in seconds
<b>Description</b>	For the given to, Parani-SD is waiting for the connection from the Bluetooth device with the given BD address. If the parameter of to is 0, it will wait forever. When connection is made with the Bluetooth device, SD response will be 'CONNECT' with its BD address. If there is no connection made within this time duration, SD response is 'ERROR' and the operation status becomes to 'Standby'.
<b>Reference</b>	ATD, AT+BTINQ?, AT+BTCANCEL
<b>Example</b>	AT+BTSCAN000B530011FF,30

### B.3.19. ATD↵



<b>SD Response</b>	↵OK↵ ↵CONNECT 112233445566↵ or ↵OK↵ ↵ERROR↵
<b>Purpose</b>	Connect to the last connected Bluetooth device
<b>Description</b>	Parani-SD saves the BD address of the Bluetooth device most recently connected. ATD can make connection to it without input its BD address. If it fails to make connection, SD response is 'ERROR'.
<b>Reference</b>	AT+BTINQ?, AT+BTSCAN

### B.3.20. ATD112233445566↵

<b>SD Response</b>	↵OK↵ ↵CONNECT 112233445566↵ or ↵OK↵ ↵ERROR↵
<b>Purpose</b>	Connect to the Bluetooth device with given BD address
<b>Parameters</b>	112233445566=BD address
<b>Description</b>	Parani-SD attempts to connect to the Bluetooth device with the given BD address. To make successful connection, the Bluetooth device must be in Page scan. This attempt continues for 5 minutes. If it fails to make connection, SD response is 'ERROR'.
<b>Reference</b>	AT+BTINQ?, AT+BTSCAN
<b>Example</b>	ATD000B530011FF

### B.3.21. ATH↵

<b>SD Response</b>	↵OK↵ ↵DISCONNECT↵
<b>Purpose</b>	Release the current connection
<b>Description</b>	The current Bluetooth connection is released normally. It takes about 30 seconds to detect an abnormal disconnection such as power off and moving out of service range.
<b>Reference</b>	ATD, AT+BTSCAN

### B.3.22. AT+BTKEY=\$string↵

<b>SD Response</b>	↵OK↵
<b>Purpose</b>	Change pin code
<b>Parameters</b>	\$string= New pin code (Default="1234")
<b>Description</b>	Pin code is a string, which allows 16 alpha-numeric characters maximum. Based on this pin code, Parani-SD generates a link key which is used in actual authentication process
<b>Reference</b>	AT+BTCSD, AT+BTFP, AT+BTSD?, AT+BTSEC, ATZ, AT&F

<b>Example</b>	AT+BTKEY="apple"
----------------	------------------

### B.3.23. AT+BTSD? ↵

<b>SD Response</b>	↵112233445566↵ ↵OK↵
<b>Purpose</b>	Display the list of Bluetooth devices sharing the pin code
<b>Description</b>	Once a connection is made with pin code, Parani-SD saves the Bluetooth device with its link key generated by pin code. The connection to a device listed in Parani-SD can be made automatically without authentication process. The maximum number of the list is 5.
<b>Reference</b>	AT+BTCSD, AT+BTFP, AT+BTKEY, AT+BTSEC, ATZ, AT&F

### B.3.24. AT+BTCSD↵

<b>SD Response</b>	↵OK↵
<b>Purpose</b>	Clear the list of Bluetooth devices sharing the pin code
<b>Description</b>	This clears the list of Bluetooth devices with link key in flash memory. To take effect of this command, ATZ or power off and on because the main memory still has the list.
<b>Reference</b>	AT+BTFP, AT+BTKEY, AT+BTSD?, AT+BTSEC, ATZ, AT&F

### B.3.25. AT+BTFP,n↵

<b>SD Response</b>	↵OK↵
<b>Purpose</b>	Set generation of link key every time of connection
<b>Parameters</b>	n=0: Inactivate (Default) n=1: Activate
<b>Description</b>	If n is set to 1, Parani-SD asks pin code every time of connection. This is used to level up the security.
<b>Reference</b>	AT+BTCSD, AT+BTKEY, AT+BTSD?, AT+BTSEC, ATD, ATZ, AT&F

### B.3.26. AT+BTSEC,Authentication,Encryption↵

<b>SD Response</b>	↵OK↵
<b>Purpose</b>	Set authentication and data encryption
<b>Parameters</b>	<i>Authentication</i> =0: Inactivate (Default) <i>Authentication</i> =1: Activate <i>Encryption</i> =0: Inactivate (Default) <i>Encryption</i> =1: Activate
<b>Description</b>	If the authentication is activated, the pin code must be set by AT+BTKEY command. Data encryption cannot be used when authentication is not activated, i.e. <i>Authentication</i> =0 and <i>Encryption</i> =1 is not valid.
<b>Reference</b>	AT+BTCSD, AT+BTFP, AT+BTSD?, AT+BTSD?, ATZ, AT&F

### B.3.27. AT+BTNAME=\$string↵

SD Response	↵OK↵
Purpose	Change device name
Parameters	\$string= New device name (Default="PSDv3b-445566")
Description	Parani-SD can have a user friendly name to identify easily. The name allows 30 alphanumeric characters maximum.
Reference	AT+BTINFO?, AT+BTINQ?
Example	AT+BTNAME="My-Parani-SD"

### B.3.28. AT+BTLPM,n↵

SD Response	↵OK↵
Purpose	Set low power mode
Parameters	n=0: Inactivate (Default) n=1: Activate
Description	During no data transmission, Parani-SD can be in low power mode to save the power consumption. It takes a few seconds to wake up Parani-SD in low power mode.

### B.3.29. AT+DFU↵

SD Response	(Display garbage messages repeatedly)
Purpose	Device firmware update
Description	DO NOT use this command in console. Because the Parani-SD enter into firmware update mode, garbage messages will appear. This command is used by ParaniWIN's firmware update menu.

### B.3.30. AT&V↵

SD Response	↵S0:m0;S1:m1; ...Sn:mn↵ ↵OK↵
Purpose	Display all the S-register
Description	All parameters are stored at S-register in flash memory. These values are sustained until hardware reset.
Reference	ATS

### B.3.31. ATSn? ↵

SD Response	↵value↵ ↵OK↵
-------------	-----------------

<b>Purpose</b>	Display a given S-register
<b>Parameters</b>	nn= Address of S-register
<b>Description</b>	A specific S-register is displayed.
<b>Reference</b>	AT&V

### B.3.32. AT\$nn=mm↵

<b>SD Response</b>	↯OK↯
<b>Purpose</b>	Change S-register value
<b>Parameters</b>	nn= Address of S-register mm= New value of S-register
<b>Description</b>	Some S-registers are optimized for the overall performance and protected from an arbitrary change by user. When users try to change these S-registers, SD response is 'ERROR'. For details of S-register, refer Appendix. B.
<b>Reference</b>	AT&V
<b>Example</b>	ATS10=0

## B.4. Command Validity

AT Command	Operation Status		
	Standby	Pending	Connect
AT	○	○	
ATZ	○	○	
AT&F	○	○	
AT+BINQ?	◎		
ATD112233445566	◎		
ATD	◎		
AT+BTSCAN	◎		
AT+BTSCAN,n,to	◎		
AT+BTSCAN112233445566,to	◎		
AT+BTCANCEL		○	
+++			○
AT+SETESC	◎		
ATO	●		
ATH	●		
AT+BTSEC,Auth,Encr	◎		
AT+BTLAST?	○	○	

AT+BTMODEn	⊙		
AT+BTNAME="Name"	⊙		
AT+BTKEY="nnnn"	⊙		
AT+BTINFO?	○		
AT+BTLPM,n	⊙		
AT+BTSD?	○	○	
AT+BTCSD	⊙		
AT+BTFP,n	⊙		
AT+UARTCONFIG,b,p,s	⊙		
AT+USEDIP?	○	○	
AT+BTVER?	○	○	
AT+DFU	⊙	⊙	
AT+BTRSSI,n	●		

⊙ Valid only when Parani-SD is not connected to other Bluetooth device.

● Valid only when Parani-SD is connected to other Bluetooth device.

## Appendix C: S-Register

S-registers contain 46 parameters of Parani-SD. These are stored in flash memory and sustained the values unless hardware reset is executed. The value of S-register can be accessed and changed with ATS command by user. Some S-registers not shown below are set to maximize the performance of Parani-SD. Thus it is not recommended to change these S-registers.

Change the value of S-register only in Standby status.

### C.1. S1: Force to Reconnect (default 1)

S1=0, Parani-SD in Mode1 does not try reconnection when disconnected.

S1=1, Parani-SD in Mode1 keeps trying reconnection when disconnected.

### C.2. S2: Enable Hardware Flow Control (default 1)

S2=0, Parani-SD's hardware flow control is off.

S2=1, Parani-SD's hardware flow control is on.

In case of SD Series, it can be changed only through dip switch.

### C.3. S3: Stream UART Policy (default 0)

S3=0, the priority of UART streaming is throughput.

S3=1, the priority is latency, which minimizes the delay of data transmission. This is useful in case of transmitting very small data quickly.

This value decides the way of handling stream data from UART. When this value is 1, in order that SD minimizes the latency, SD sends the received data immediately. When this value is 0, in order that SD maximizes throughput, SD stores received data for a short time and sends a large packet. If the packet length is less than 100 bytes, latency-oriented way is better. But if the packet length is more than 100 bytes, throughput-oriented way is recommended. Also if you want to use high baudrate, throughput-oriented way is more effective. Just for reference, the buffer length for receiving is 2 Kbytes.

### C.4. S4: Enable Remote Name Query (default 1)

S4=0, Parani-SD inquires only BD address. This speeds up the inquiry process.

S4=1, Parani-SD inquires BD address, device name and class of device.

This value decides whether SD finds friendly name of Bluetooth device or not. When this value is 1, SD finds not only BD address but also friendly name. When this value is 0, SD finds only BD address. Without finding friendly name, a searching is quick to respond. If you want to search the other Bluetooth devices quickly, set this value to 0. In case of using pairing button, finding friendly name will be omitted automatically.

### **C.5. S6: Enable Low Power Mode (default 0)**

S10=0, deactivate Low Power Mode.

S10=1, activate Low Power Mode.

This value decides whether SD works in Low Power Mode or not. When this value is 0, SD works only in active power mode. When SD works in Low Power mode, delay in transferring data may occur.

### **C.6. S10: Enable SD Response (default 1)**

S10=0, Parani-SD does not send SD responses to host system.

S10=1, Parani-SD send SD responses to host system.

This value decides whether SD sends response messages such as OK, ERROR, CONNECT, DISCONNECT or not. When this value is 0, SD sends no response messages. If the response messages cause troubles in host programs or devices that is connected to SD, change this value to 0.

### **C.7. S11: Enable Escape (default 1)**

S11=0, Parani-SD does not allow escape sequence character. The operation status of Connect cannot be changed to Standby. As Parani-SD skips the process detecting escape sequence character, the more efficient data transmission is expected.

S11=1, Parani-SD allow escape sequence character. Whenever it is needed, the Connect status can be changed to Standby.

### **C.8. S12: Clear Data Buffer When Disconnected (default 0)**

S12=0, Parani-SD does not clear the data buffer received from host system when disconnected.

S12=1, Parani-SD clears the data buffer when disconnected.

### **C.9. S14: Enable DTR Transfer (default 1)**

S14=0, DTR/DSR signal is transferred to loop-back.

S14=1, DTR signal is transferred to DSR of remote device.

### **C.10. S15: Enable Disconnect by DTR (default 0)**

S15=0, DTR signal cannot release the connection.

S15=1, The Bluetooth connection can be released when DTR signal is off.

This value decides whether Bluetooth connection is released when DTR signal drops or not. If this value is 1, you can use DTR signal in order to disconnect Bluetooth connection.

### **C.11. S22: Fast Connect (default 0)**

S22=0, none

S22=1, page scan

S22=2, inquiry scan

S22=3, page/inquiry scan

### **C.12. S24: Maximum Number of Inquiry Result (default 10)**

The maximum number of inquiry list can be controlled. **This value is up to 15,**

### **C.13. S28: Escape Sequence Character (default 43)**

The decimal number of the ASCII code of escape sequence character can be controlled. The initial value is 43, the ASCII code of '+'.  
value is 43, the ASCII code of '+'.

### **C.14. S31: Page Timeout (default 300)**

This is the timeout in seconds to attempt connection with ATD command. **After this timeout expires, the SD will restart automatically. If this value is 0, SD will attempt to connect without restarting**

### **C.15. S33: Inquiry Timeout (default 30)**

This is the timeout in seconds to execute inquiry scan.

### **C.16. S37: Supervision Timeout (default 16000)**

This is the timeout in 625 $\mu$ sec to presume disconnection, which is set to 16000 initially.  
16000 $\times$ 625 $\mu$ sec=10sec)

The smaller the value becomes, the more quickly Parani-SD can detect an abnormal disconnection. But when the communication is suspended for some environmental reasons, it may be regarded as disconnection.

### **C.17. S46: BD Address of Last Connected Device**

This saves the BD address of the Bluetooth device connected most recently.



## Appendix D: Trouble Shooting

### D.1 No Data Transmission

#### D.1.1 COM Port Settings

Check whether the Baud rate of Parani-SD is same as that of its host equipment. **You can know the Baud Rate if you check the dipswitch. If it is Atcommand mode, you can initialize Baud rate to 9600 by pressing Reset Button.**

Check whether the Data bit is set to 8. Parani-SD supports only 8 Data bit. If your host equipment uses 7 Data bit and even or odd parity, it can work as if it uses 8 Data bit and No parity. This is valid only when both DCE devices are Parani-SD. In this case, set both Parani-SDs to 8 Data bit and No parity. If one of DCE devices is other Bluetooth device such as Bluetooth USB dongle, please contact Technical Support.

Check whether the Parity and Stop bit of Parani-SD are same as those of its host equipment. Parani-SD supports No parity, Even parity and Odd parity, 1 and 2 Stop bit.

Check whether the host equipment of Parani-SD uses Hardware Flow Control. Parani-SD is initially set to Use of Hardware Flow Control. If your host equipment does not use Hardware Flow Control, set the Hardware Flow Control of Parani-SD to No use. **The Hardware Flow Control can be changed only by dipswitch.**

Parani-SD does not support RS-232 break signal.

#### D.1.2 Pin Assignment

Parani-SD is DCE device. If your host equipment is DTE, plug Parani-SD directly to the host equipment or use straight RS-232 cable. If your host equipment is DCE, use cross over RS-232 cable (Null modem cable).

### D.2 Data Loss or Malfunctioning

#### D.2.1 Hardware Flow Control

When transmitting large data with No use of Hardware Flow Control, Parani-SD will clear the data buffer unexpectedly. This possibility goes higher as the RF transmission environment is bad.

#### D.2.2 AT Response

The messages of AT response may affect the function of host system. Set AT+SD=0 not to send SD response to host system and try again. Refer Appendix B. for details.

## **D.3 Transmission Delay**

### **D.3.1 RF Processing Delay**

It takes 30msec approximately for a Parani-SD to complete the data transmission to the other side Bluetooth device. This time delay cannot be reduced and would be bigger as the RF transmission environment is bad. Do not use Parani-SD if your applications cannot allow this time delay.

### **D.3.2 RF Transmission Environment**

If there are lots of Bluetooth device working in a small area and/or the RF communication distance is too long and/or there are some obstacles affecting RF performance, Parani-SD repeats the transmission packet by packet due to interferences and/or low RF performance. This leads the transmission time delay.