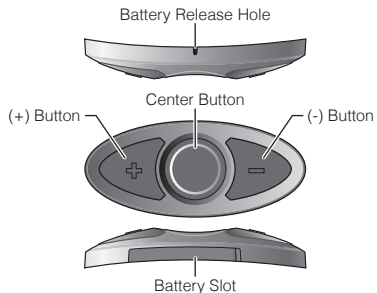
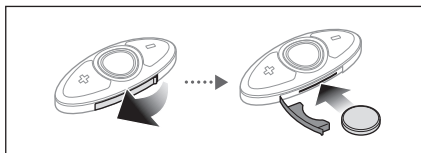


RC3 Quick Start Guide



Getting Started



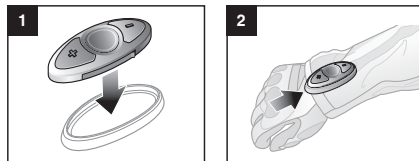
Note:

- When closing the battery slot, insert both ends of the rubber first.
- To remove the battery, insert a paper clip through the Battery Release Hole.

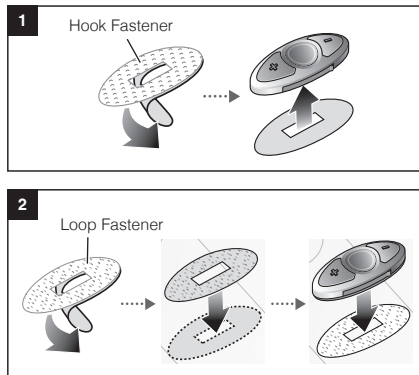
Installation

There are three ways of installing the RC3.

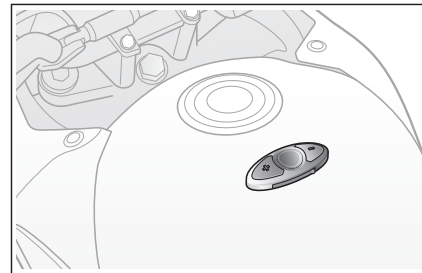
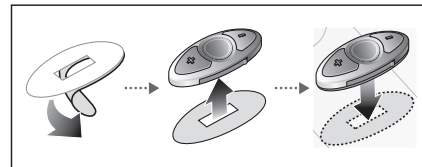
Using the Clip



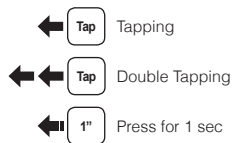
Using the Hook and Loop Fasteners



Using the Adhesive Tape

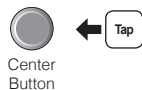


Button Operation



Power On/Off

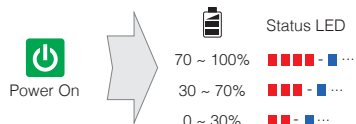
Power On



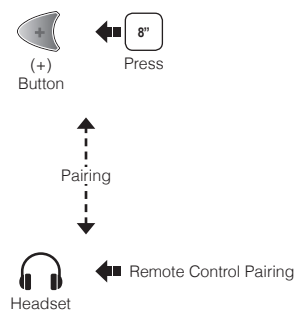
Deep Sleep



Battery Check



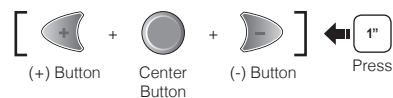
Bluetooth Pairing



Note:

- You can control the headset using the RC3 only after you pair them together.
- The RC3 supports Sena headsets with Bluetooth 4.1.

Factory Reset



Headset Control

To control your headset using the RC3, please refer to the Quick Reference Guide for button operations on functions such as phone, music, and intercom.



Sena Technologies, Inc.
www.sena.com
Customer Support: support.sena.com
E-mail: support@sena.com

This device complies with part 15 of the FCC Rules. Operation is subject to the following two conditions:

- (1) This device may not cause harmful interference, and
- (2) this device must accept any interference received. Including interference that may cause undesired operation

Note : This equipment has been tested and found to comply with the limits for a Class A digital device, pursuant to part 15 of the FCC Rules.

These limits are designed to provide reasonable protection against harmful interference when the equipment is operated in a commercial environment.

This equipment generates, uses, and can radiate radio frequency energy and, if not installed and used in accordance with the instruction manual, may cause harmful interference to radio communications.

Operation of this equipment in a residential area is likely to cause harmful interference in which case the user will be required to correct the interference at his own expense.

Le present appareil est conforme aux CNR d'Industrie Canada applicables aux appareils radio exempts de licence. L'exploitation est autorisée aux deux conditions suivantes :

- (1) l'appareil ne doit pas produire de brouillage, et
- (2) l'utilisateur de l'appareil doit accepter tout brouillage radioélectrique subi, même si le brouillage est susceptible d'en compromettre le fonctionnement.

Caution: Any changes or modifications in construction of this device which are not expressly approved by the party responsible for compliance could void the user's authority to operate the equipment.

Hereby, SENA TECHNOLOGIES.Inc Declares that this RC3 is in compliance with the essential requirements and other relevant provisions of directive 1999/5/EC.

This device complies with Industry Canada license-exempt RSS standard(s).

Operation is subject to the following two conditions:

- (1) this device may not cause interference, and
- (2) this device must accept any interference, including interference that may cause undesired operation of the device.