

Parts

Package includes:	
● Emitter	1
● Receiver (earphones)	1
● Instruction Manual	1 set
The following parts are optional (to be purchased additionally)	
● Audio cable	1
● Y adaptor cable	1
● Power adaptor	1

Installation

● Installing the receiver:

Insert two AAA batteries into the battery compartment according to the + and - polarity.

● Installing the emitter:

Insert two AAA batteries into the battery compartment according to the + and - polarity, or insert the power adaptor (optional) into power socket of emitter (4.5V DC).

Insert audio plug of the emitter into AUDIO-OUT socket of audio source (such as TV set, audio device, PC, DVD player, VCD player, CD player, MP3 player, etc.). In case the audio out socket of the audio source is the earphone socket, the Y adaptor cable can be used for connection (see Fig. 1). To achieve best reception spread out emitter audio cable which can be also used as antenna.

Operation

● Wireless headphones

1. Insert the emitter audio cable into the AUDIO-OUT socket of the electrical device (see Fig. 1) or earphone socket, and move the function switch of the emitter to the WIRELESS EARPHONE position, and the power indicator of emitter will go on. (In case that TV set is used as the audio source, the TV set can be muted.)

2. Turn on the volume control and power button (ON/OFF) on receiver, the power indicator of receiver will go on. First press the RESET key, and press the SCAN key, the sound sent from emitter should be heard.

● Listening to the radio

The receiver can be used separately as an FM radio. Press SCAN key once, and the receiver will automatically search toward a higher range and lock one radio channel; when the highest range is reached, press RESET key, and the frequency returns to the lowest range. Press SCAN key again, and the receiver will search the radio channels from the low range again.

● Wired earphone

Insert one end of the audio cable (optional) into the audio socket of the receiver (see Fig. 4), and insert the other end into the earphone socket of the electrical devices, such as MP3 player, VCD player, DVD player, etc., and then the unit can be used as a wired earphone.

● Turning off the unit

When the unit is not used, move the function switch on the emitter to OFF position to turn off the emitter; and turn the volume control receiver to the OFF position, and the power indicator receiver will go out, and the receiver will turn off.

Remove batteries when not using unit for a long time.

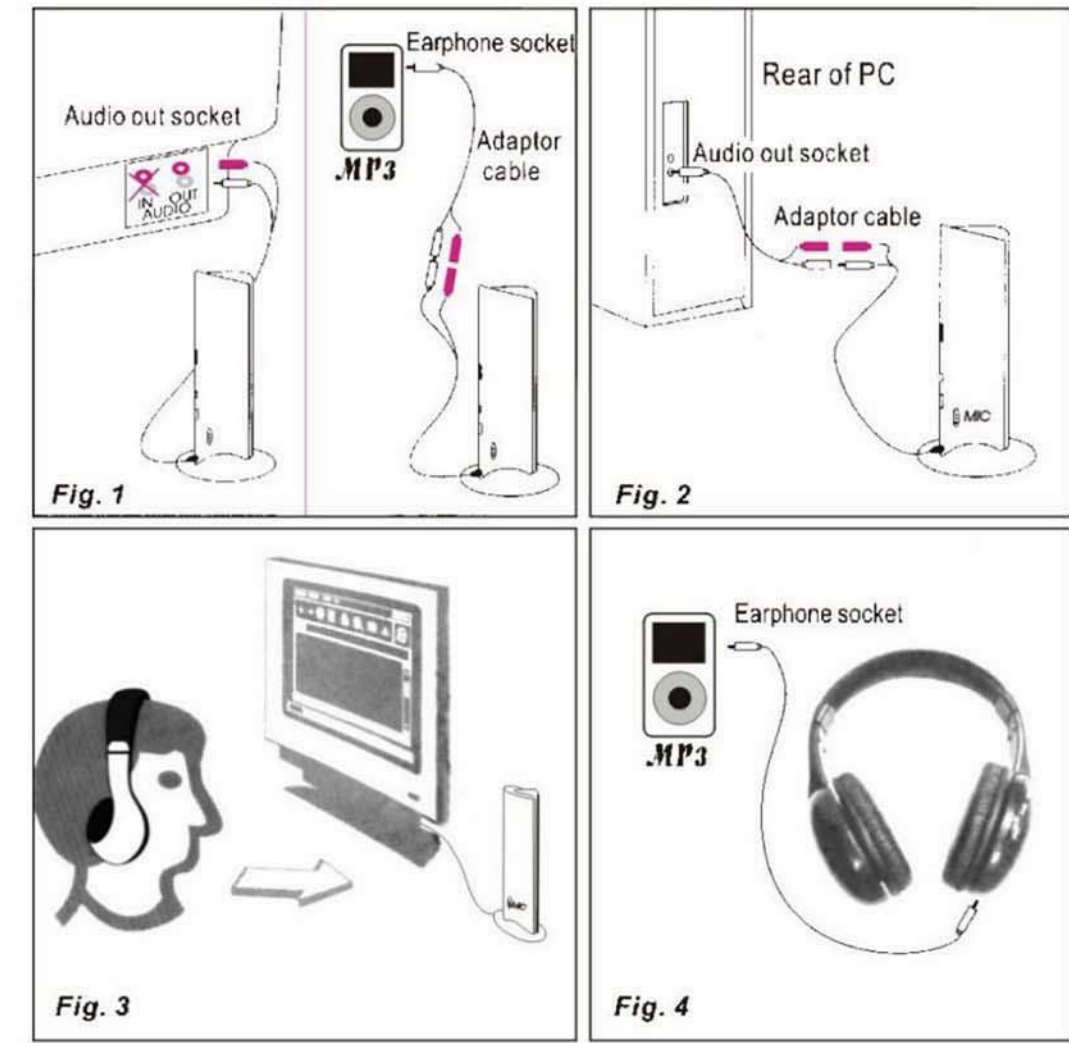
NOTE: This equipment has been tested and found to comply with the limits for a Class B digital device, pursuant to Part 15 of the FCC Rules. These limits are designed to provide reasonable protection against harmful interference in a residential installation. This equipment generates, uses and can radiate radio frequency energy and, if not installed and used in accordance with the instructions, may cause harmful interference to radio communications. However, there is no guarantee that interference will not occur in a particular installation.

If this equipment does cause harmful interference to radio or television reception, which can be determined by turning the equipment off and on, the user is encouraged to try to correct the interference by one or more of the following measures:

- Reorient or relocate the receiving antenna.
- Increase the separation between the equipment and receiver.
- Connect the equipment into an outlet on a circuit different from that to which the receiver is connected.
- Consult the dealer or an experienced radio/TV technician for help.

This device complies with Part 15 of the FCC rules. Operation is subject to the following two conditions:
(1) This device may not cause harmful interference, and
(2) This device must accept any interference received, including interference that may cause undesired operation.

Caution:
The manufacturer is not responsible for any radio or TV interference caused by unauthorized modifications to this equipment. Such modifications could void the user authority to operate the equipment.



FM Hi-Fi Wireless Earphone User's Manual

Technical Specifications

Emitter

Emission frequency: 88.7 ± 0.2MHz

Modulation mode: FM

Emission distance: ≥ 8m

Reception from any audio and visual equipment with audio out socket, such as TV set, audio device, DVD/VCD player, multimedia PC, etc.

Power supply: 2XAAA battery or 4.5V DC

The applied bandwidth : 200K

Receiver

Frequency range: 88.1 - 107.9 MHz

Reception Mode: FM

Distortion: ≤ 2%

Power Supply: 2XAAA battery

The applied bandwidth : 200K

Notes

- To achieve best reception spread out emitter audio cable of the (the emitter audio cable can also be used as antenna).
- If the sound is distorted or too strong, adjust the volume of the signal source (TV set, VCD player, DVD player, PC, etc.) to a lower level, and reception performance may be improve.
- Replace the batteries if you are having the following problems.
 1. The emitter indicator becomes dim.
 2. The receiver reception is poor.
 3. The volume becomes weak and the sound is distorted.

Appearance and Function Illustrations

A Receiver

1. Battery compartment cover
2. Volume control and power button (ON/OFF)
3. Scan key (SCAN)
4. Reset key (RESET)
5. Power indicator
6. Audio socket

B Emitter

7. Power indicator (front)
8. Power and function switch
9. Microphone socket (MIC)
10. Power socket (4.5V DC)
11. Audio cable of emitter
12. Battery compartment cover (bottom)

