

# **XPERT**

## **AUDIO CONTROL CENTER SOFTWARE USER GUIDE**

### **For Xpert Software and DSP Headset Adapter Installation**

Your Xpert Headset Adapter is fully compatible with

Windows 95

Windows 98

Windows 98SE (second edition)

Windows ME, 2000 and

Windows XP.

**Information to user : PART 15, PARAGRAPH 15.21 AND 15.105(b)**

Changes or modifications not expressly approved by the party responsible for compliance could void the user's authority to operate the equipment

**FCC Notice**

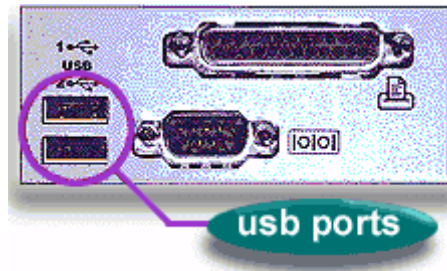
NOTE : This equipment has been tested and found to comply with the limits for a Class B digital device, pursuant to Part 15 of the FCC Rules. These limits are designed to provide reasonable protection against harmful interference in a residential installation. This equipment generates, uses and can radiate radio frequency energy and, if not installed and used in accordance with the instructions, may cause harmful interference to radio communications. However, there is no guarantee that interference will not occur in a particular installation. If this equipment does cause harmful interference to radio or television reception, which can be determined by turning the equipment off and on, the user is encouraged to try to correct the interference by one or more of the following measures:

- Reorient or relocate the receiving antenna.
- Increase the separation between the equipment and receiver
- Connect the equipment into an outlet on a circuit different from that to which the receiver is connected.
- Consult the dealer or an experienced radio/TV technician for help.

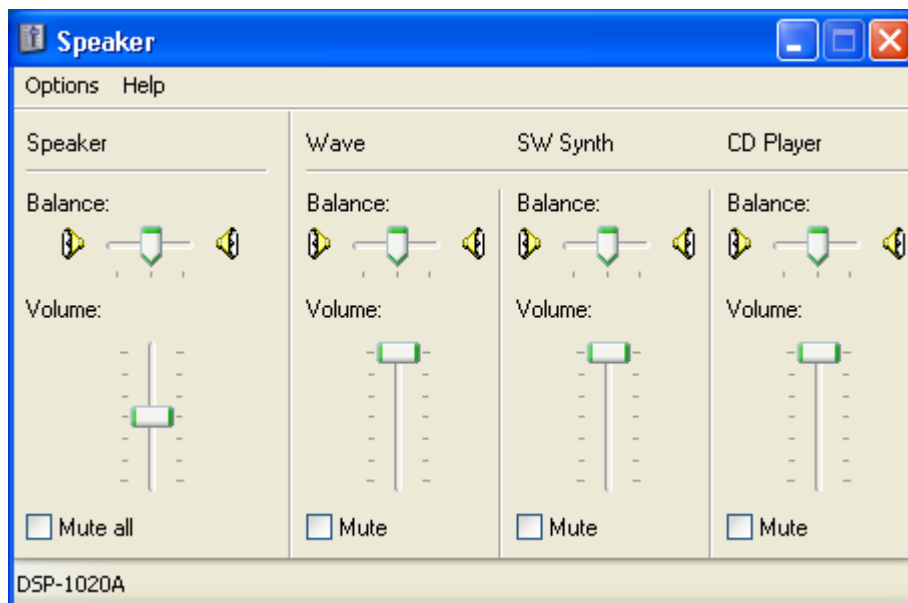
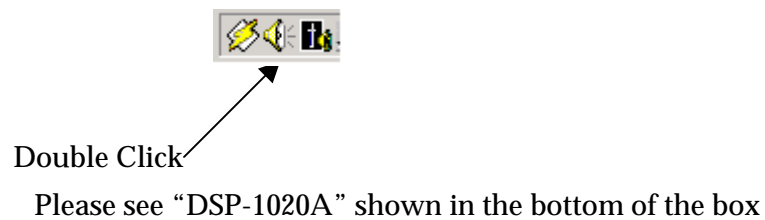
-----  
This device complies with Part 15 of the FCC Rules. Operation is subject to the following two conditions: (1) this device may not cause harmful interference, and (2) this device must accept any interference received, including interference that may cause undesired operation.

## DSP Headset Adapter Installation

With a simple connection of the headset Adapter into your computer, you will be prompted by the Add New hardware wizard to find drivers for your headset. When you have a dialog box, you can just click either Next or Finish to complete your hardware installation.



You can simply double click a speaker icon at the system tray and if the following menu box (DSP-1020A or USB Audio) comes up, your installation has been successfully done.



## GETTING STARTED

Windows 95, 98, 98SE, ME, 2000 and Xp users: You do not need your Windows installation CD.

### STEP ONE

#### Install and Register Your Software

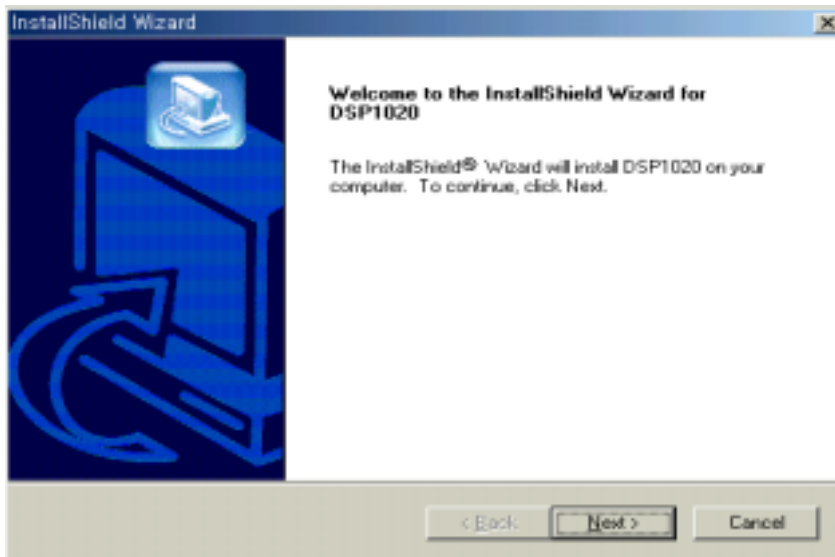
1. Insert the Seo Won K-Tec. Xpert CD into your computer. If the introduction program does not start automatically soon after you insert the CD in your computer, do the following:

#### Windows

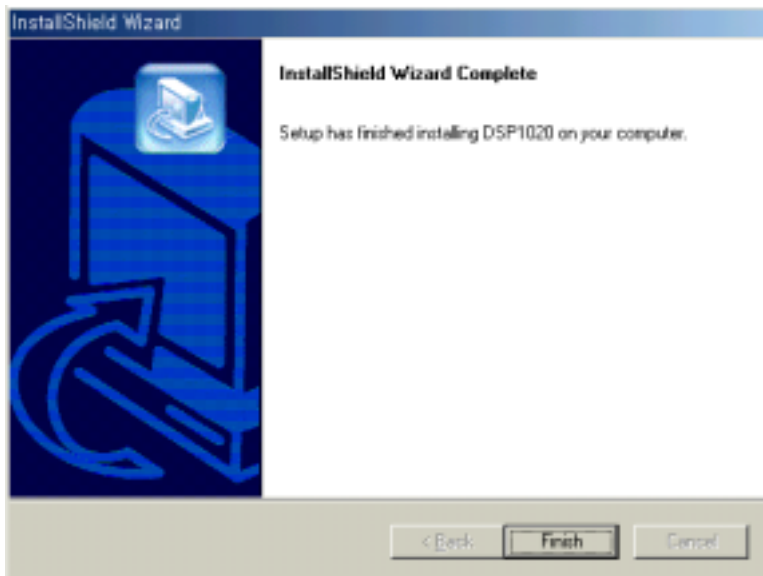
On the Windows desktop, double-click the My Computer icon.

Double-click the Seo Won K-Tec. Xpert CD.

Double-click the Setup.exe file.



2. Click Next to advance to InstallShield Wizard Complete.



3. Click Finish.

## **STEP TWO**

### **Headset Installation**

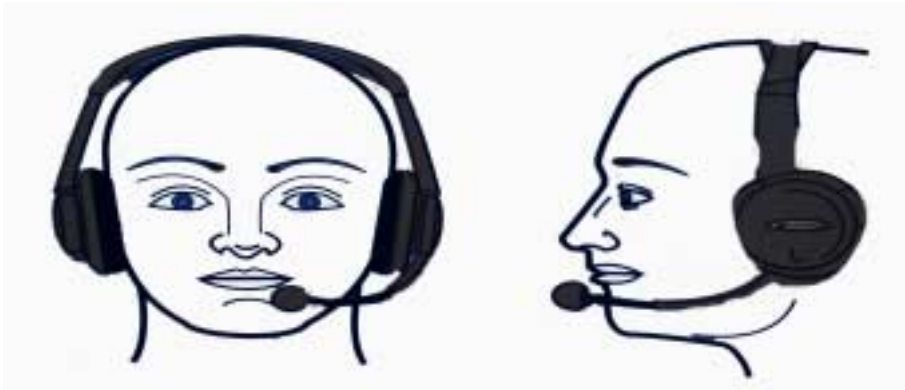
When prompted by the installation program, insert the headset's USB connector in your computer's USB port.

*Note:* To use a USB hub with the Seo Won K-Tec. DSP Series headset, the hub must have its own power supply.

## **STEP THREE**

### **Put on the headset and set the microphone position.**

Adjust the microphone so that it is 1cm (about 1/2") from the center of your mouth both horizontally and vertically. If you can hear yourself breathe through the microphone, move it horizontally closer to the side of your mouth.



\*\* Please see your individual headset user's manual for applying your headset into your head and mouth.

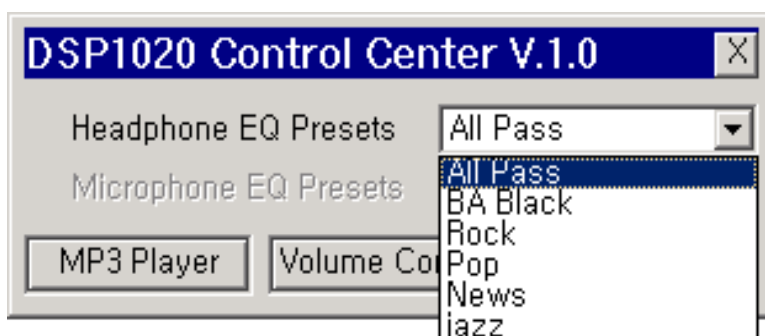
#### **STEP FOUR**

##### **Launch DSP1020 Control Center V1.0**

Double click the Seo Won K-Tec. DSP1020 Control Center V1.0 Software icon in the system tray to open the Seo Won K-Tec. Xpert application. You can also open the application by opening the shortcut on the Desktop or program Files/Xpert/Xpert.exe.



Double click system tray icon to open the Seo Won K-Tec. DSP1020 Control Center V1.0.



## STEP FIVE

### Adjust Headset Setting

Make sure that the Microphone Mute button is not off and that the Volume control is in the center position.

Click on MP3 Player and listen to music.

