

SMP-3000

User's Manual

SEWOO Information and Technology Co., Ltd.

CONTENTS:

- ✓ SMP-3000 Web Pad.
- ✓ USB Camera(Optional).
- ✓ Stylus Pen.
- ✓ Protective Cover.(Applicable to the case of Mass Production).
- ✓ AC/DC Adaptor/Battery Charger.
- ✓ Lithium-Ion Rechargeable Battery Pack
- ✓ Smart USB Cable.
- ✓ User's Manuals.

THINGS TO BE CAREFUL:

- ✓ Do not disassemble SMP-3000 at any time.
- ✓ Do not use AC/DC adapter/battery charger other than the one with the package.
- ✓ Keep away from any object with magnetic field.
- ✓ Keep away from the fire flame.
- ✓ Do not leave SMP-3000 exposed to direct sunlight.
- ✓ Keep battery separately if SMP-3000 is not in use for a long period time.
- ✓ Do not touch the screen with any sharp object.
- ✓ Connect the USB Camera only to the USB port on the top of SMP-3000. Do not use the USB port on the right side of SMP-3000 for camera at any time.
- ✓ Always save the files into HDD and back them up occasionally to the safe place.
- ✓ USB port on the right side of SMP-3000 can be used for USB interfaced devices such as USB keyboard, USB mouse, USB FDD, USB Smart Cable, USB CD-ROM and etc.

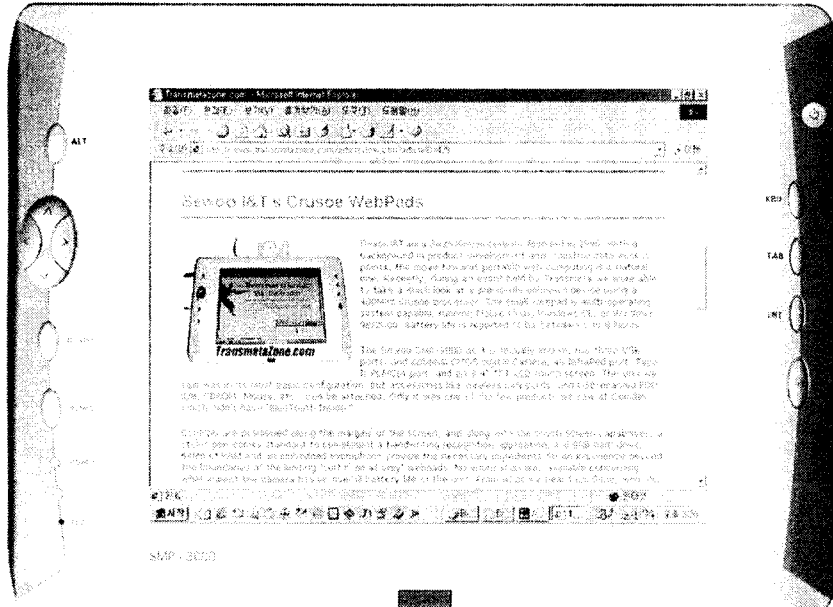
(Note that USB CD-ROM needs to have its own power supply)

In case of problem and for any other inquiry, please contact below personnel:

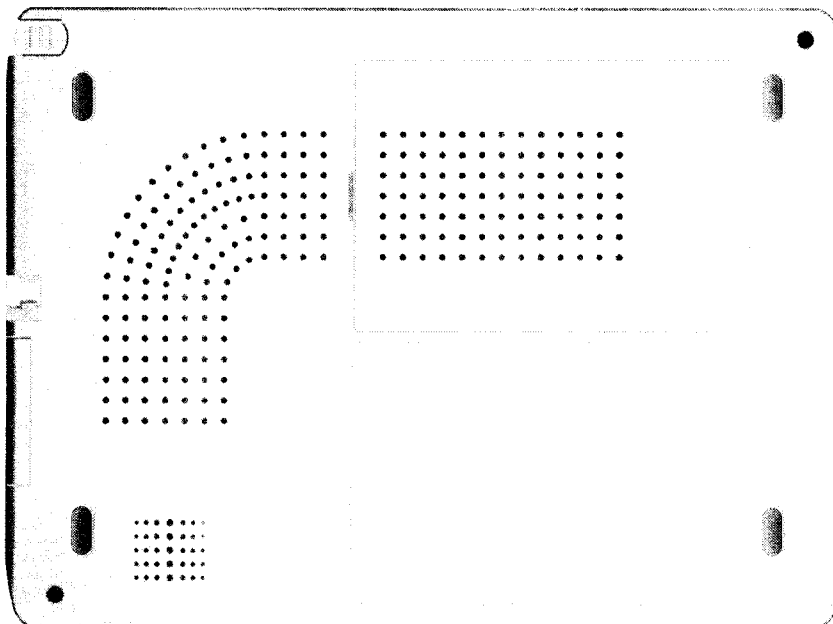
E-mail: sewoo@sewoo.net

Phone: 82-2-3665-3339

Chapter 1. DESCRIPTIONS



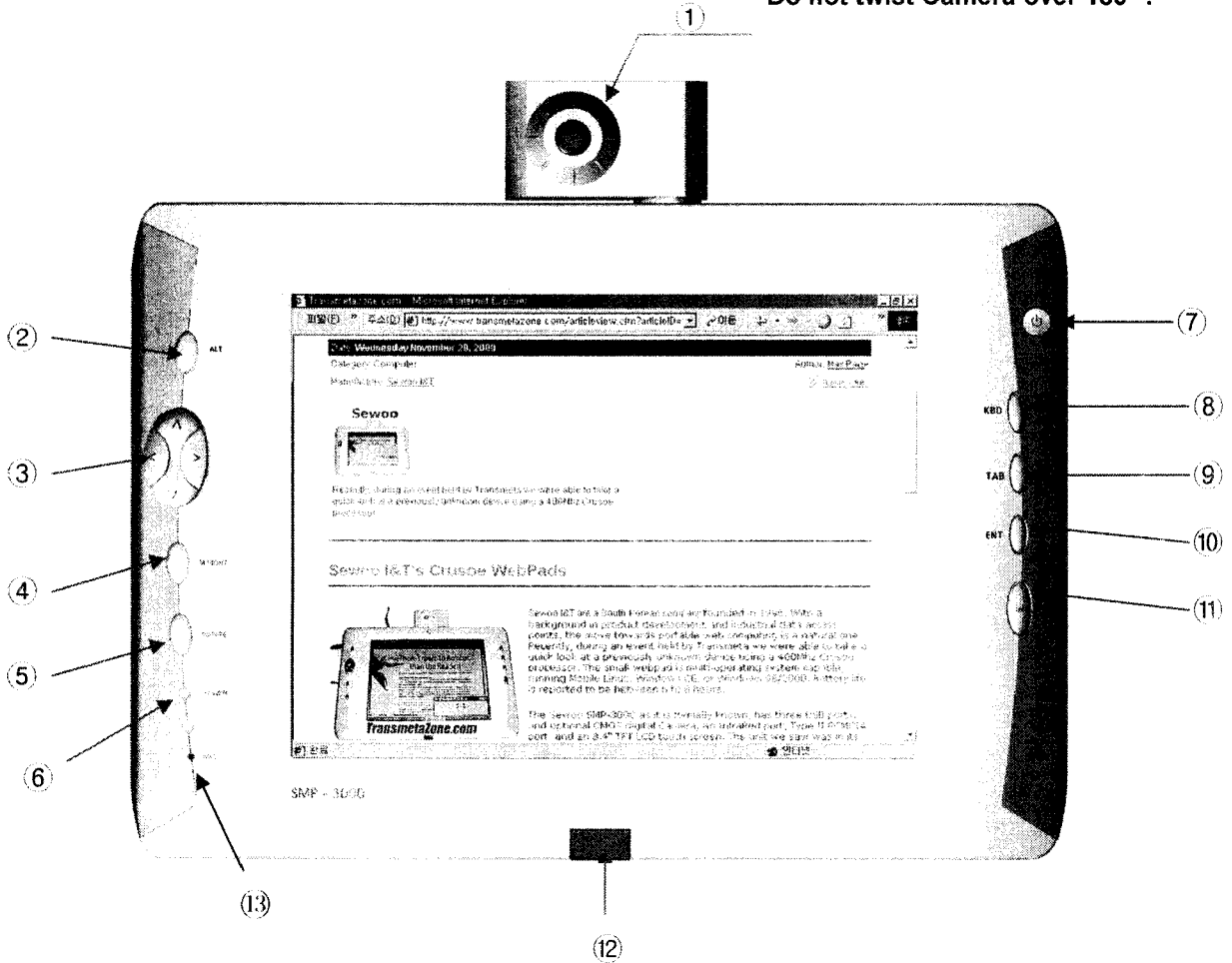
FRONT



REAR

Chapter 2. KEY FUNCTIONS:

*** Do not twist Camera over 180° ! ***



- | | | | |
|-----------|---------|--------------|-------------|
| 1. Camera | 2. ALT | 3. Arrow Key | 4. Ctrl |
| 5. Rotate | 6. LED | 7. Power | 8. KeyBoard |
| 9. ESC | 10. TAB | 11. Enter | 12. IR |
| 13. Mic | | | |

(1) USB Camera.

Camera can be rotated 180° clockwise.

(2) Alt Key.

Works as Alt key of the keyboard in Windows mode.

③ Arrow Keys.

Work as Arrow Keys of the keyboard in Windows mode.

④ Ctrl Key.

Works as Ctrl Keys of in the keyboard in Windows mode.

⑤ Rotate Key.

Rotates the whole screen 90 degrees.

⑥ Battery LED.

In charging : Orange light – On

Fully Charged : Green light – Blinking

Under 10% of Battery Power : Red light – On

Under 5% of Battery Power : Red light – Blinking

In discharging without DC Adapter : Red light – On

S3(Save to memory) Mode : Orange light – Blinking

Battery Data Error : Red light – Blinking

⑦ Power Key.

Powers SMP-3000 on and off. Hibernate mode function can be added by changing the Windows' setting. However, with standby mode activated and when the power is on, SMP-3000 can be forced to power off by pressing and holding this key down or it will go into Hibernate by pressing this key once. By pressing this key once again, SMP-3000 will be out of Hibernate mode.

⑧ Keyboard Key.

Toggles to hide or show the Soft Keyboard window once the software is running.

⑨ Esc Key.

Works as Esc Key of the keyboard in Windows mode.

⑩ Tab Key.

Works as Tab Key of the keyboard in Windows mode.

⑪ Enter Key.

Works as Enter Key of the keyboard in Windows mode.

⑫ IR.

It will be programmed to use wireless keyboard.

⑬ Mic.

Microphone

*** Combination Keys. ***

-
- Functions when ALT key and another key (other than ALT key) are pressed together in Windows Mode.
 - **ALT** + **RIGHT ARROW** => FORWARD AT INTERNET EXPLORE
 - **ALT** + **LEFT ARROW** => BACKWARD AT INTERNET EXPLORE
 - **ALT** + **UP ARROW** => BRIGHT UP LCD PANEL
 - **ALT** + **DOWN ARROW** => BRIGHT DOWN LCD PANEL
 - **ALT** + **Ctrl** + **KBD** => SYSTEM RESET
 - **ALT** + **ROTATE** => NUMBER KEY(TOGGLE)
 - **ALT** + **KBD** => INPUT ID(In the Future)
 - **ALT** + **ESC** => ACTIVATED WINDOW CLOSE OR SYSTEM RESET
 - **ALT** + **TAB** => ACTIVATED WINDOW CONVERSION
 - **ALT** + **ENTER** => WHOLE SCREEN DISPLAY AT WINDOWS MEDIA PLAYER
 - **Ctrl** + **TAB** => ACTIVATED CALIBRATION MODE TO CALIBRATE TOUCH PANEL

Chapter 3. SETTING UP SMP-3000 HARDWARES:

1. Installing the battery pack to SMP-3000.

The rechargeable battery is packed separately from SMP-3000 and should be slide in very carefully to the bottom of SMP-3000. The battery should be fully charged before using it for the first time.

2. Connecting to the power.

- Connect AC/DC adapter/battery charger to the power port located on the right side of SMP-3000.
- Connect AC/DC adapter/battery charger to the power receptacle.
- Green LED light to be blinking will show on the AC/DC adapter indicating the battery is being fully charged.

3. Charging Time.

It will take about 3 hours for the battery to be fully charged.

4. Handle The Battery Pack With Cautions.

- Only use the AC adapter that comes with SMP-3000.
- If the battery is not used for long period of time, totally drain the battery out.
- If the temperature of the battery pack goes higher than 60°C, remove the pack and let it cool down in room temperature before using it again.
- Do not leave the battery pack exposed direct sunlight or heated up.
- Do not disassemble the battery pack.
- Do not drop the battery pack or give physical shock.
- Do not let children play with the battery.

Chapter 4. USING AND SETTING SMP-3000.

1. Power on.

After battery pack is fully charged, press the Power Key. The green Power LED light will be on indicating the power is on.

2. Power off.

There are two ways of powering SMP-3000 off.

1. Shut down the system from Windows ME.

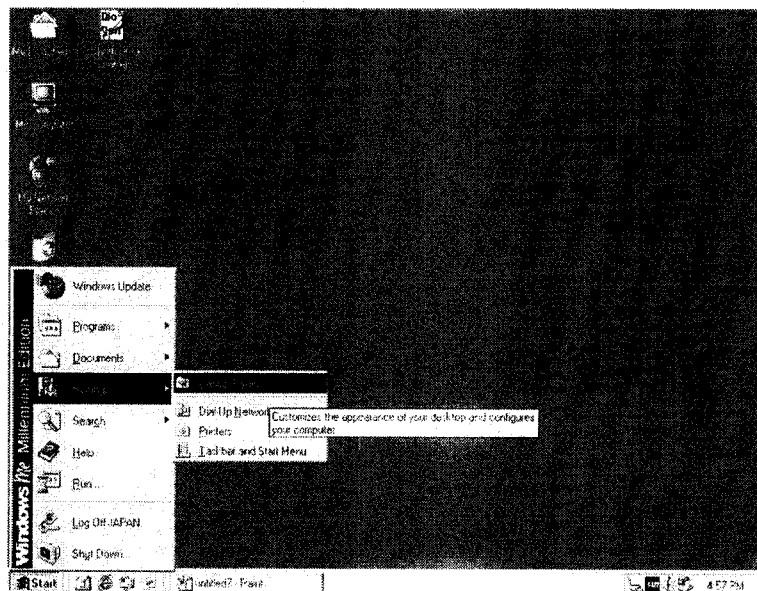
- Select Start from Taskbar -> Select Shut Down from Start menu.
- Check Shut Down from Shut Down Windows menu -> Select OK.

2. Changing the function of Power Key.

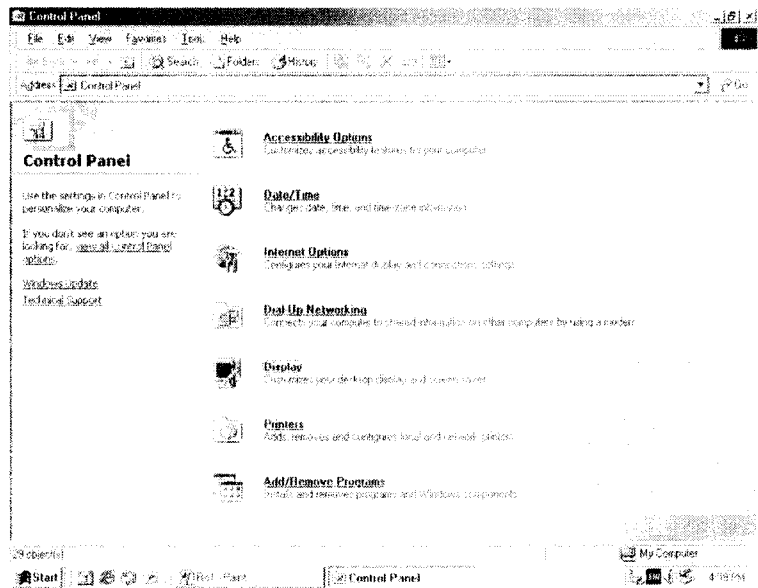
- Select Start from Taskbar-> Select Settings -> Select Control Panel.
- Select Power Management Icon from Control Panel.
- Select Advanced tap -> Reconfigure Power Buttons setting -> Select Apply.

3. Rotate Button Setting

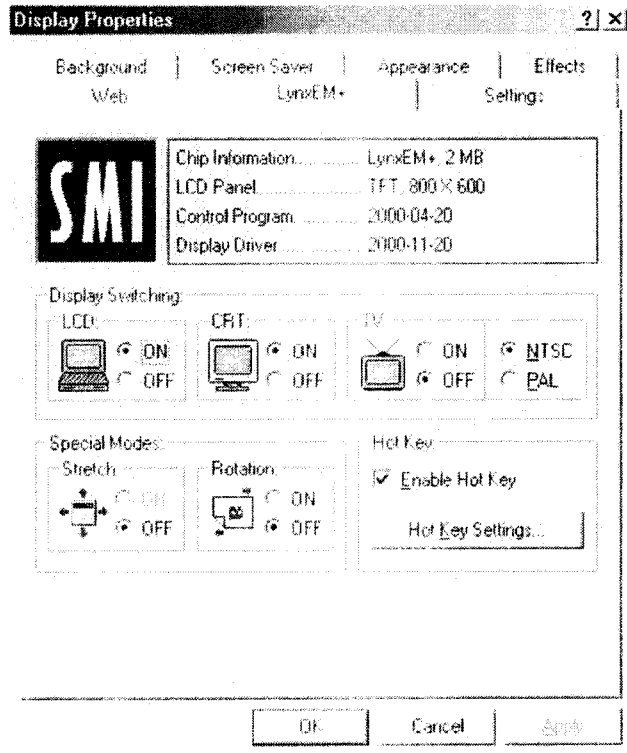
- 1) Select "Settings" in "Start Menu" and click "Control Panel"



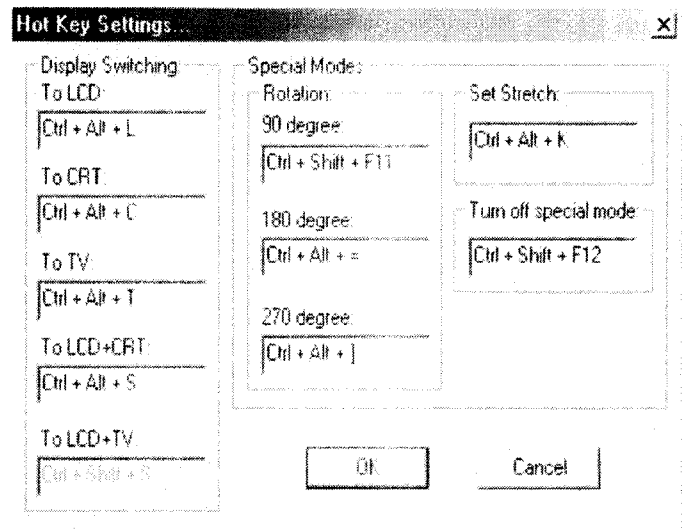
2) Click "Display" icon.



3) Select "LynxEM+", and Press "Hot Key Settings" button.



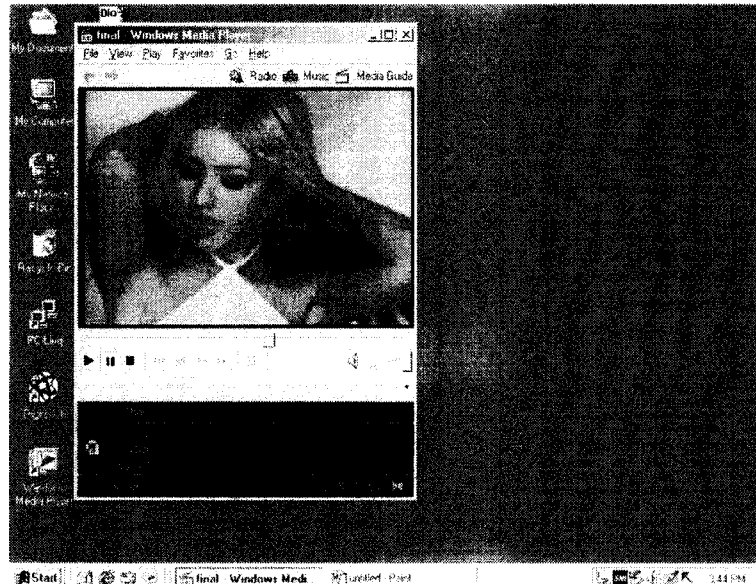
- 4) Setting "90 degree" to "Ctrl + Shift + F11" and "Turn off special mode" to "Ctrl + Shift + F12", and then click "OK" button.



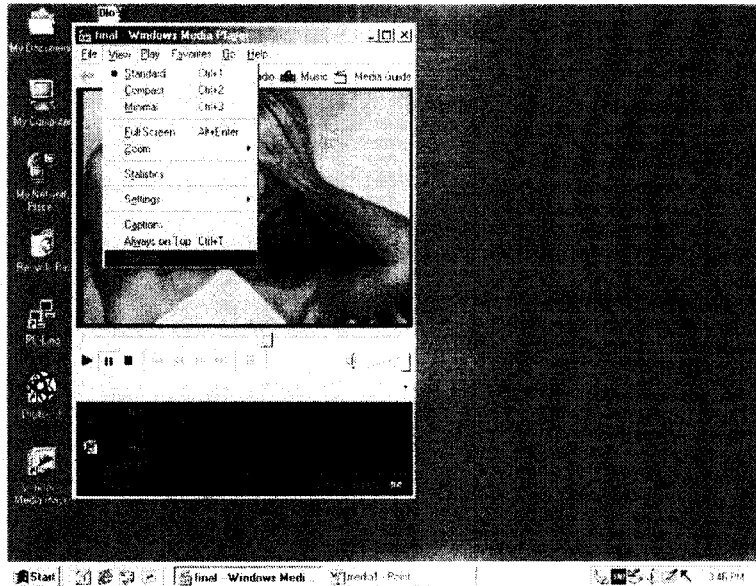
4. Media Player 6.4 Setting.

To see high quality movie, Windows Media Player 6.4 is better than Windows Media Player 7.0

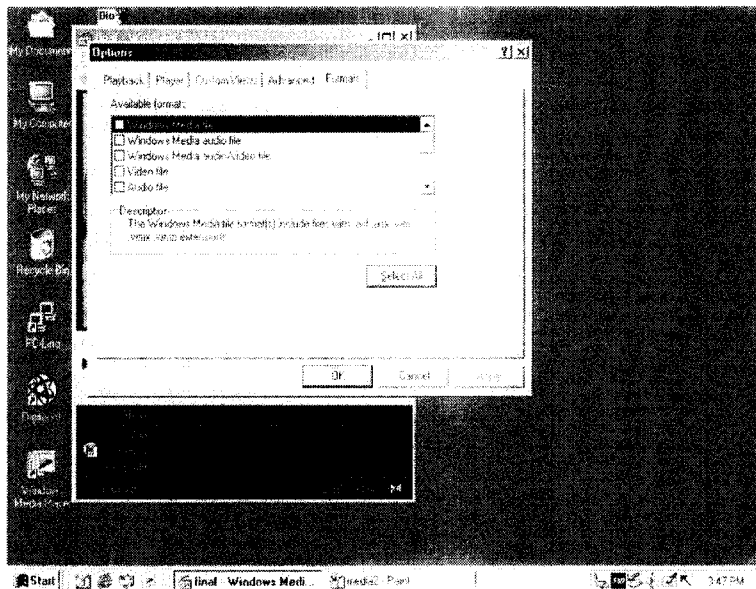
- 1) Execute "C:\WProgram files\Windows Media Player\Wmplayer2"



2) Select "View" in the menu bar and Click "Option".

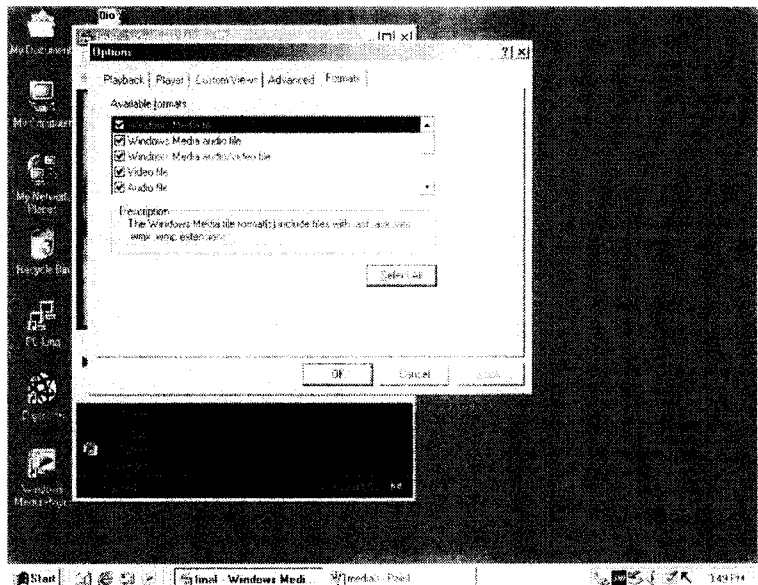


3) Select "Formats".



4) Click "Select All" Button

5) Click "OK" Button

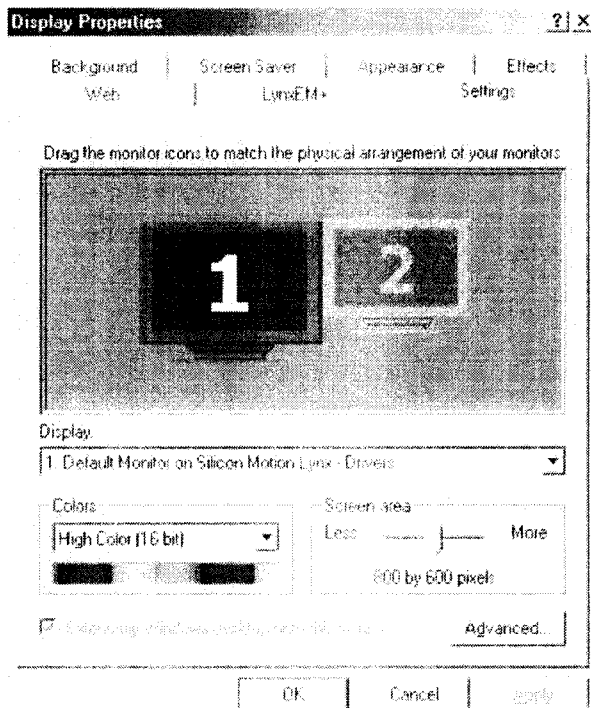


5. Display setting

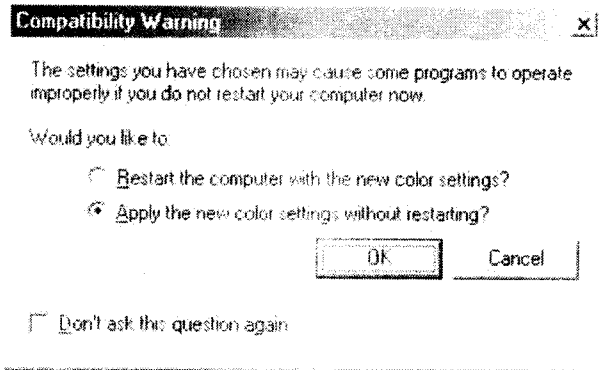
1) [Start] -> [Setting] -> [Control Panel] -> [Display Properties]

2) Select "High Color(16 bit)"

3) Manupulate 800 by 600 pixels



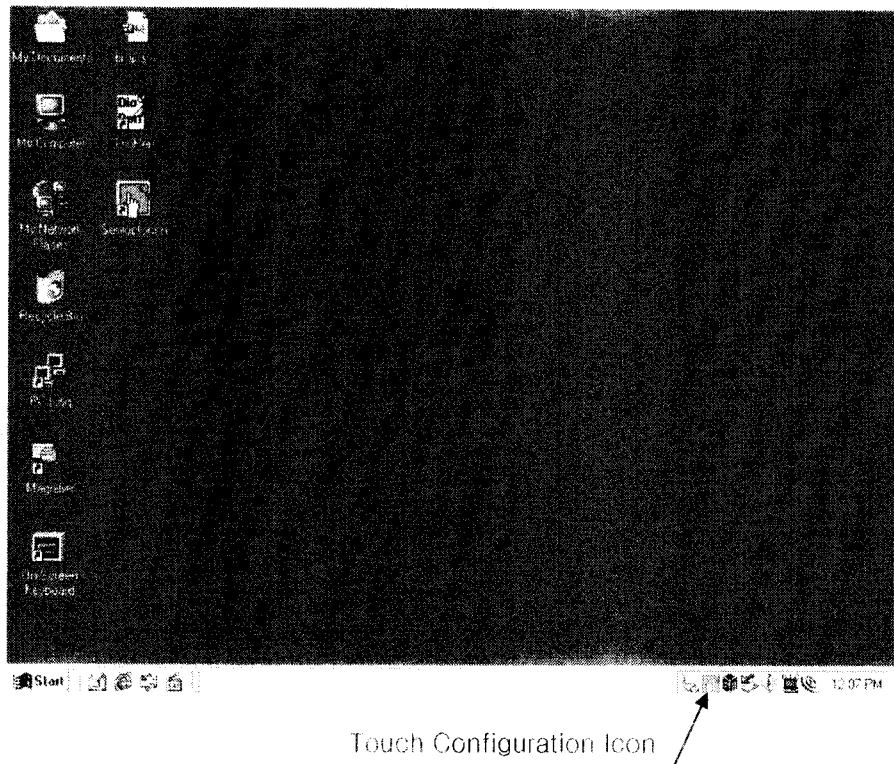
- 4) Select "Apply the new color settings without restarting?". and then click "OK" button.



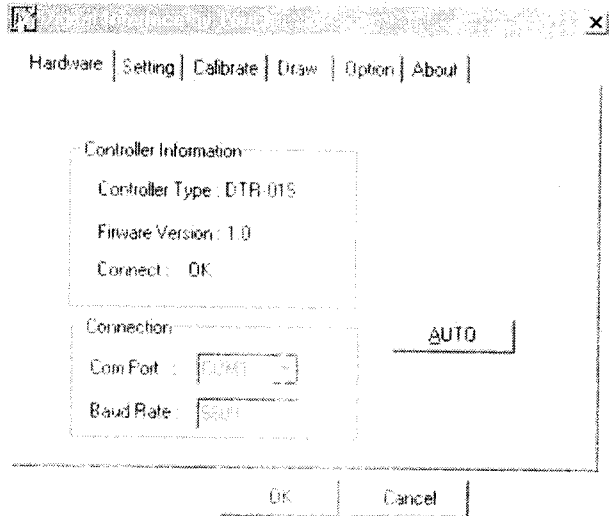
6. Touch Screen.

Touch the screen to select the icons in Windows environment in order the run the applications/programs or to draw in the Paint application.

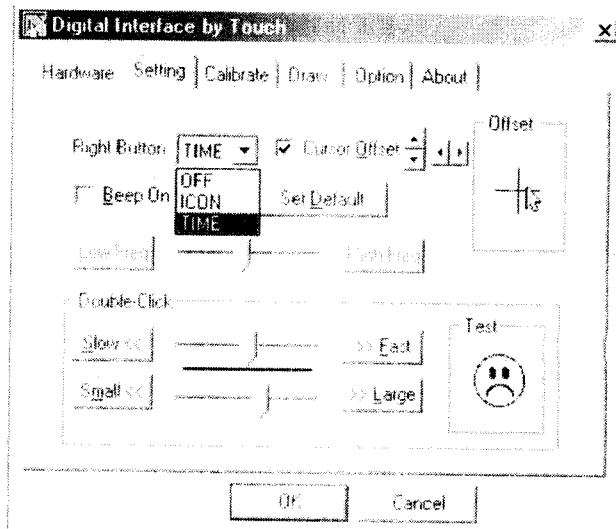
- 1) Click Touch Configuration Icon



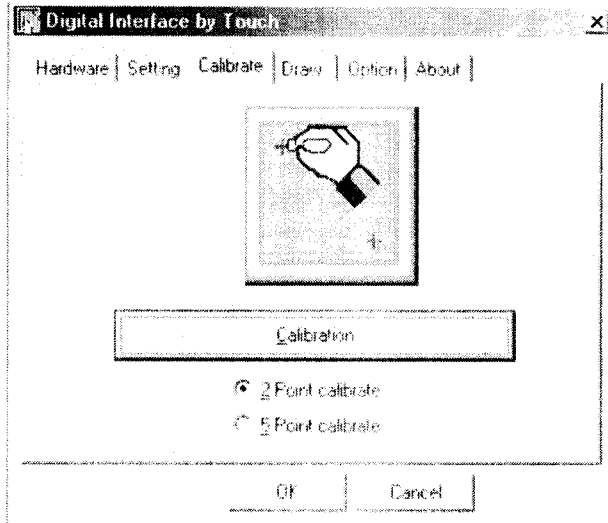
- 2) Check that Connect is "OK" sign in "Controller Information" Frame.
If not, Click "Auto" Button and then "OK" sign could appear.



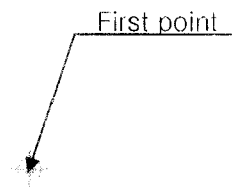
- 3) Choose "TIME" mode in Right Button, and adjust Cursor Offset Arrow if you would set the cursor more correctly.



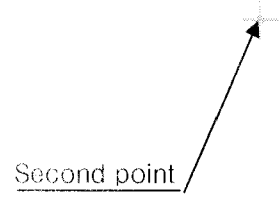
4) If you calibrate the touch panel in SMP-3000, click "Calibration" button.



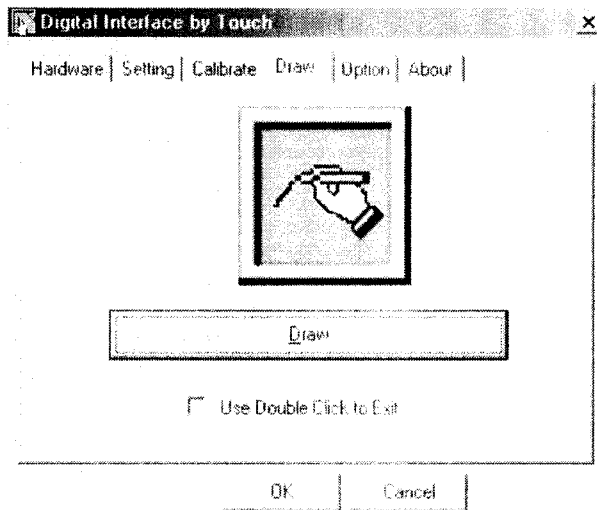
5) First point should be touched in 1~2 second and then "Calibration first point success" Box would come out, if you do calibrate correctly. Second point should be done in same way.



Note : Push "Ctrl + Tab" Key in SMP-3000, if the touch panel doesn't work correctly.

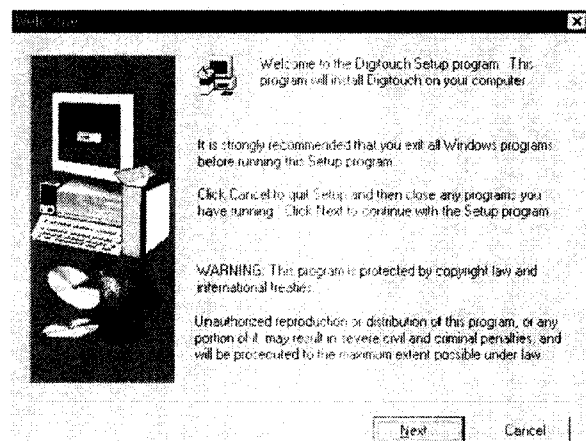


6) If you'd like to test touch position or status. Click "Draw" button and then check them.

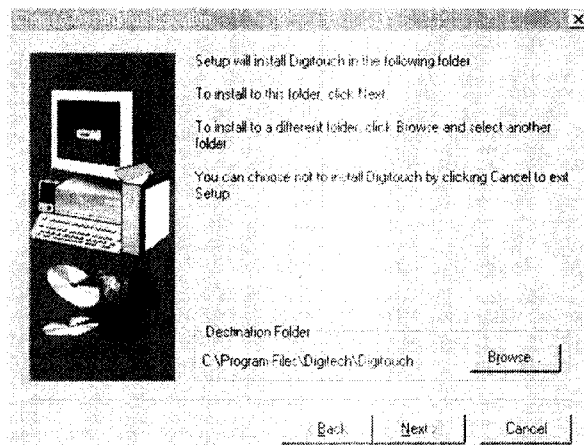


*** Touch Program Installing and Setting

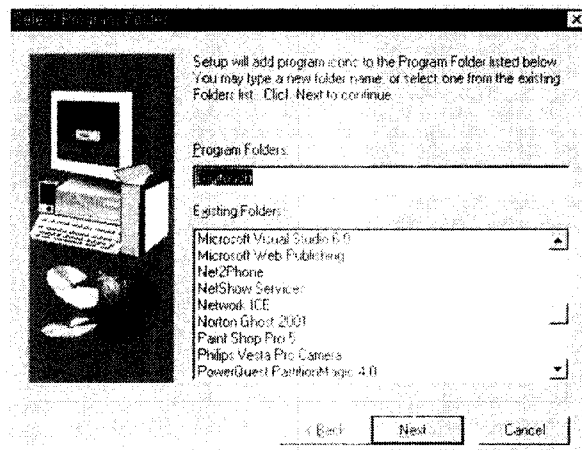
- 1) Click Setup icon in
C:\webpad\WDigiTouch
WDisk 1



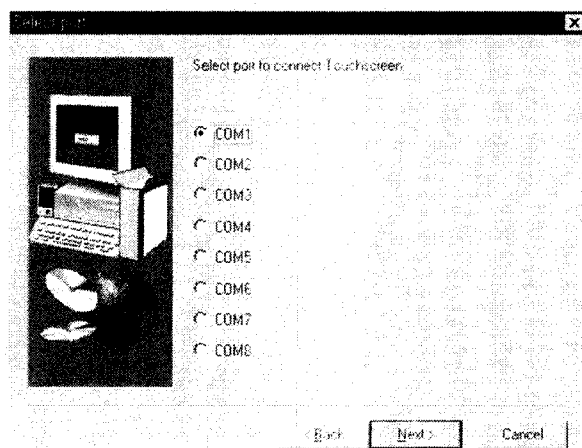
2) Click Next



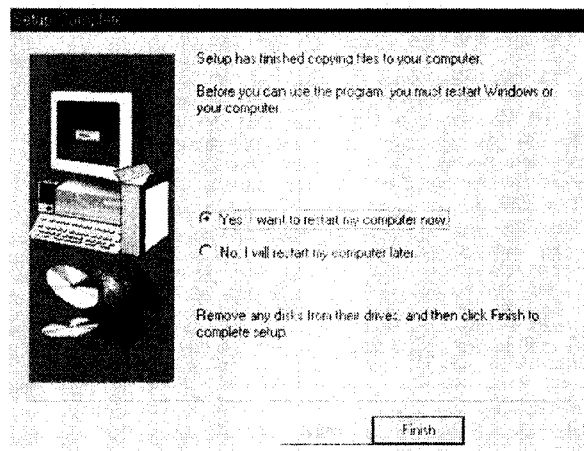
3) Click Next



4) Select COM1 port to connect to Touch Screen and click Next



5) Click Finished Button.



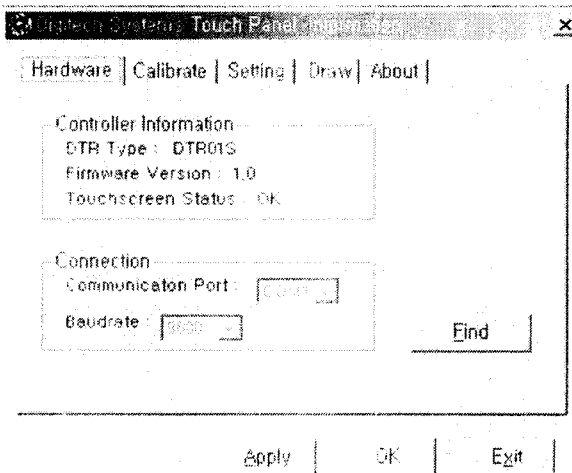
DTR Information (Controller Information)

6) Click Digitouch icon in Desktop.
Digitouch System Touch Panel
Information would be displayed.

Set the following.

Communication Port : COM1

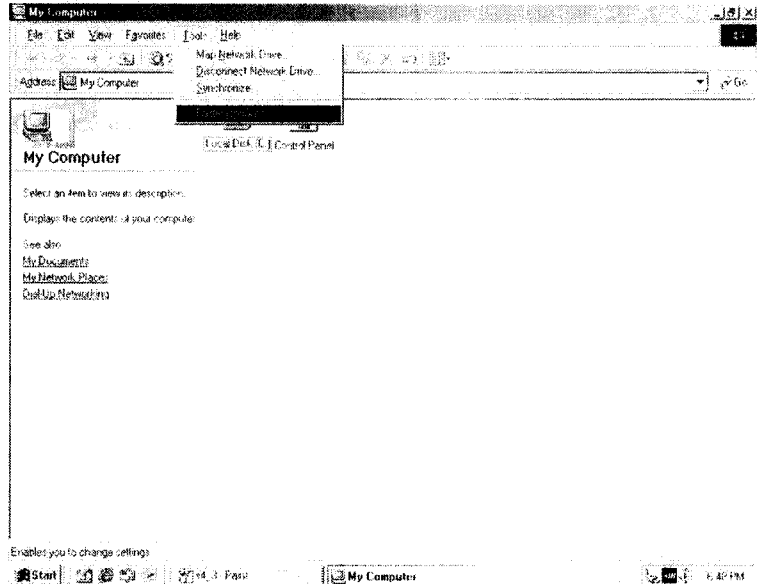
Baudrate : 9600



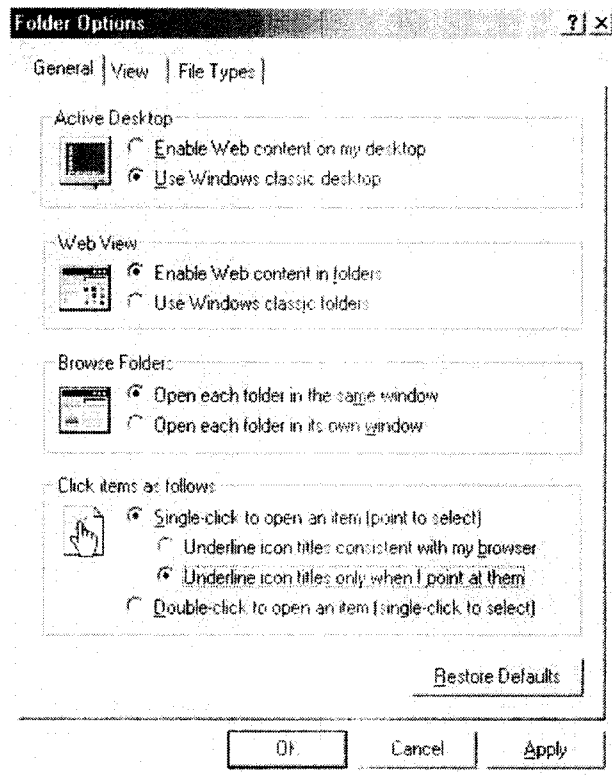
7. One Touch Setting (Not recommended)

Note : If you'd like to choose "One click" Option, you have to choose "ICON" Mode instead of "TIME" Mode in Touch configuration.

- 1) Select "Tools" in Menu bar, and click "Folder Options".



- 2) Select "Underline icon titles only when I point at them"



8. Stylus Pen.

Inputs the characters in certain applications such as Excel, Word, PowerPoint and etc. or while system setting.

9. Camera.

Select 'AMCAP' icon from Windows' Desktop.

10. Installing PCMCIA Card.

Refer to the related manuals while installing driver for Modem or LAN card.

- Insert the PCMCIA card or into PCMCIA slot of SMP-3000, and then follow the related manuals.

(Note that SMP-3000 supports both 3.3 volts and 5 volts:)

11. Connecting Monitor.

Connect one end of included mini VGA cable to VGA port of SMP-3000 and other end to Monitor.

12. Wireless Keyboard / Trackball

SMP-3000 can use Wireless Keyboard with Trackball in place of the keyboard and mouse and only Model No. SWK-8695WT (Part No. SPR-8696WT) from SEJIN ELECTRONICS can be used.

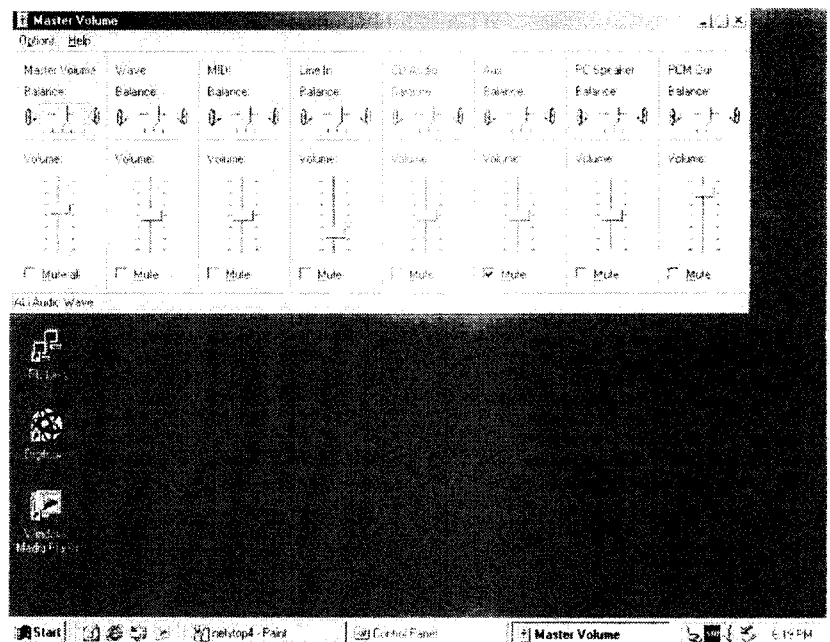
Specifications of the Wireless Keyboard with Trackball are as follows:



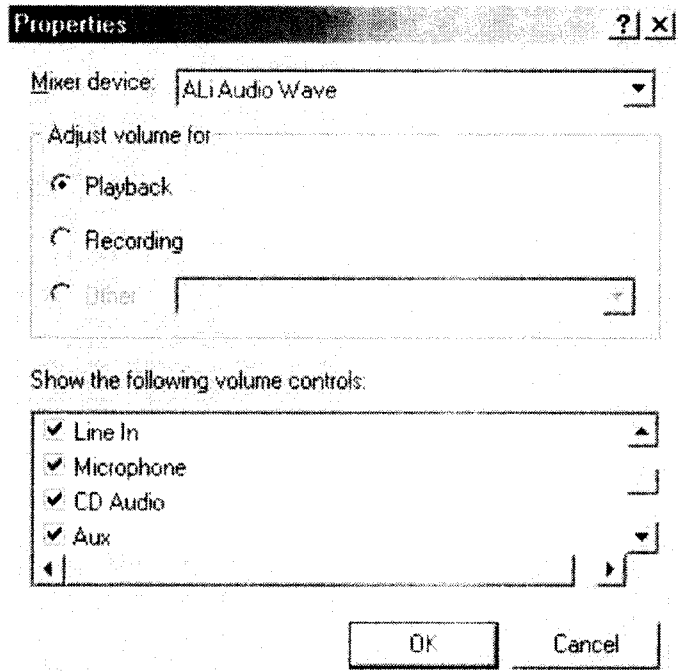
- Key travel: 3.0 ± 0.5 mm
- Number of keys: 86 keys
- Effective operating range: 5 meters(16.4 ft)
- Effective operating angle: within $\pm 30^\circ$ at 5 meters
- Type: quiet tractile fell
- Power: 3V DC (two AA batteries included)
- Operating force: 60 ± 15 gf
- Dimensions: 292 x 164 x 30 mm (11.5 x 6.46 x 1.2 in.)

13. Master Volume Setting

- 1) Click "Master Volume" button in States bar.
- 2) Select "Options" and Click "Properties" in menu bar

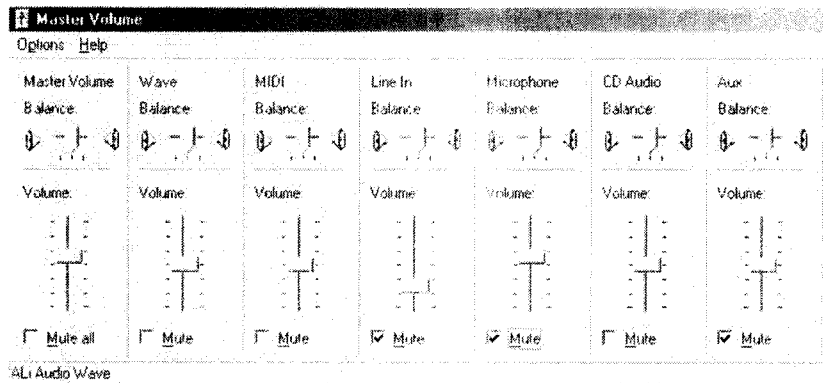


3) Check "Microphone" and Click "OK" button.

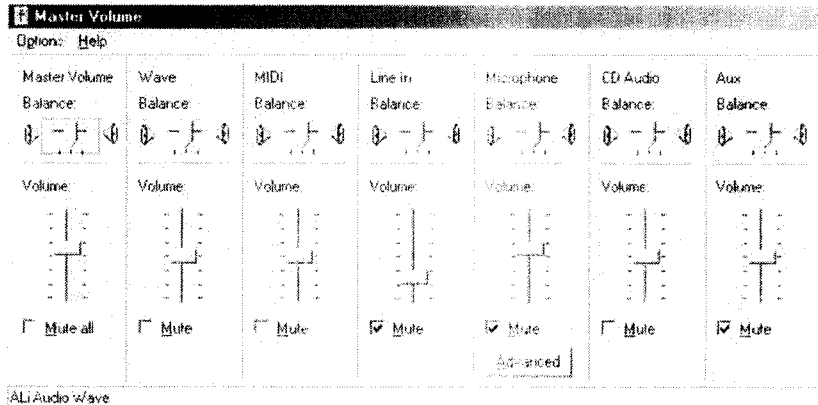


4) Check "Line in Balance"

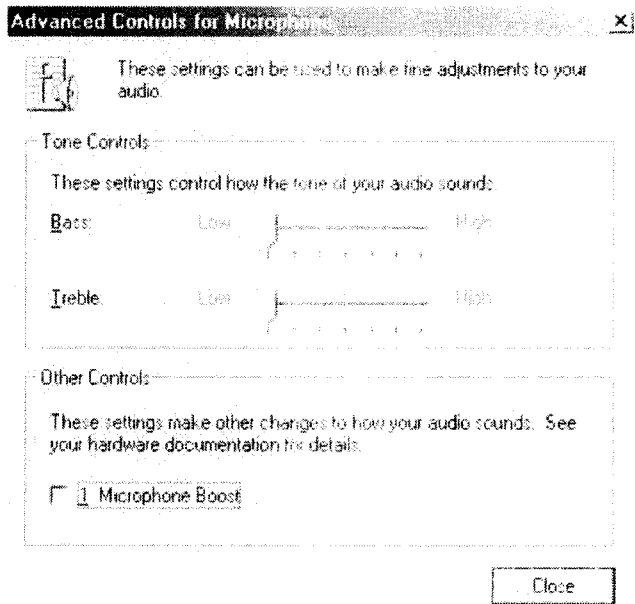
5) Select "Options" and Click "Advanced"



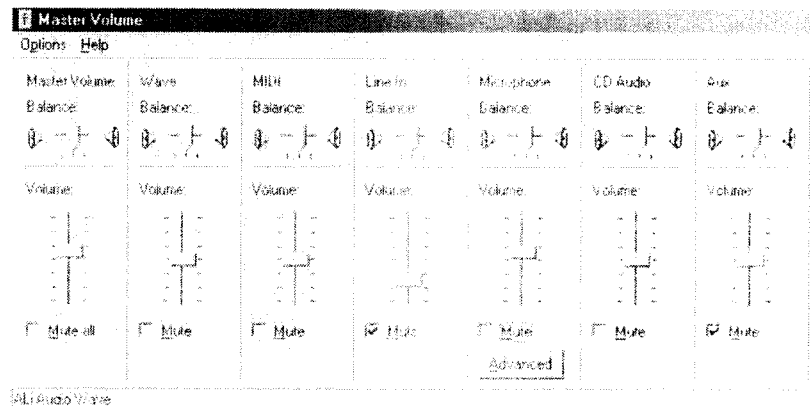
6) Click "Advanced" button



- 7) Release "Microphone Boost" check and Click "Close" button.



- 8) Release "Mute" check in "Microphone Balance" and close.



14. PS/2 Device

SMP-3000 is equipped with PS/2 port as the external Port. This PS/2 port supports PS/2 keyboard or PS/2 mouse. PS/2 devices should only be connected with the power off and if the device is connected or changed while the power is on, then the system may malfunction.

15. SMART USB Cable User's Manual

PC-LinQ Program Installation

Installing the device driver for the PC-LinQ, you need to install the PC-LinQ application program for transferring files:

- 1) Insert the PC-LinQ driver diskette into the floppy disk drive and run the C2C-bridge.exe program.
- 2) The PC-LinQ Setup program will start to begin program installation.
- 3) Follow the instructions on every dialog box to finish the installation.



PC-LinQ Cable

- 4) After installation is complete, a shortcut of the PC-LinQ program will be placed on your Windows desktop. Repeat the same procedure on the other computer.

Driver Installation

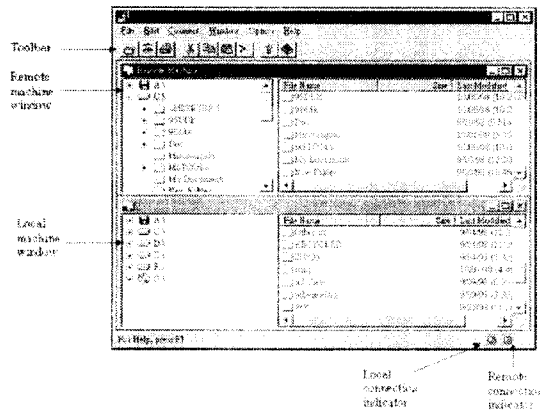
Follow the steps below on installing the PC-LinQ cable for the first time:

- 1) Power on both computers where you will connect the PC-LinQ and make sure that the USB port is enabled and working properly.
- 2) Plug in the USB cable into the USB port and Windows will detect an unknown device and run the Add New Hardware Wizard to assist you in setting up the new device.
- 3) For Windows 98 / ME / 2000 users:
 - a. Select Others and click Browse. Change the folder of your drive (ie:C:\WC2C-Bridge Driver) and click OK.
 - b. Double check the directory that Windows prompts. Click OK.
 - c. Click Finish to install drivers.
 - d. Windows will prompt Please insert windows 98 CD-ROM and click OK(Only for Win95).
 - e. Click Browse and change the folder of your drive (ie:C:\WC2C-Bridge Driver) and click OK.
 - f. Double check the directory that Windows prompts. Click OK to continue until installation is complete.

Running the PC-LinQ Program

- 1) Follow the steps below on how to run the PC-LinQ program:
- 2) Plug in both ends of the PC-LinQ cable to the two computers.
- 3) Double-click on the PC-LinQ shortcut icon on your desktop screen. Do the same for the other computer.

4) The PC-LinQ File Manager will appear on your screen and will detect both the local and remote



machine. This is much similar with Windows Explorer file manager where you can cut, copy, paste, or drag files and folders.

5) Manager where you can cut, copy, paste, or drag files and folders.

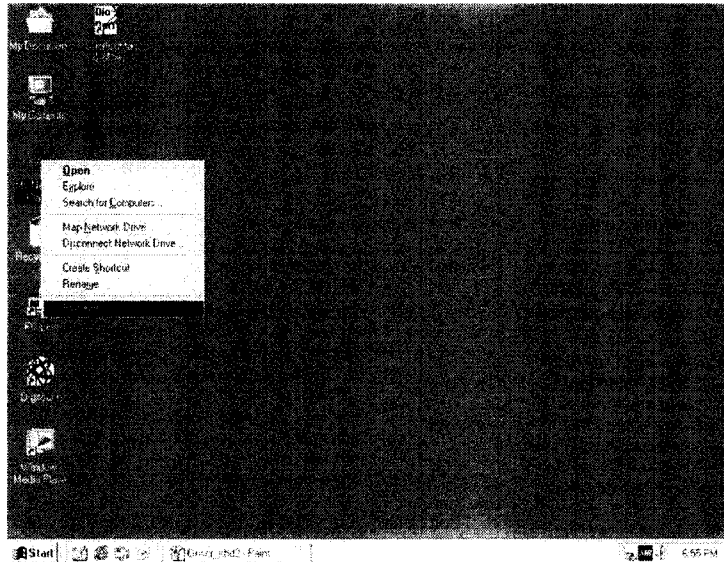
6) You can also print text or document files from the remote machine to your local printer by clicking on the file and run File-Print command.

7) There are two LED-like indicators found on the bottom-right corner of the PC-LinQ File Manager. These indicators show the connection status of the remote and local machine. The left LED is for the local machine, while the right LED is for the remote machine. A green LED indicates that the connection is good while a red LED indicates that connection is not found. Both LEDs need to be in green color for a proper link and operation. If one LED is red, either the USB cable is not properly connected, or the software is not properly installed, or the PC is in suspend mode.

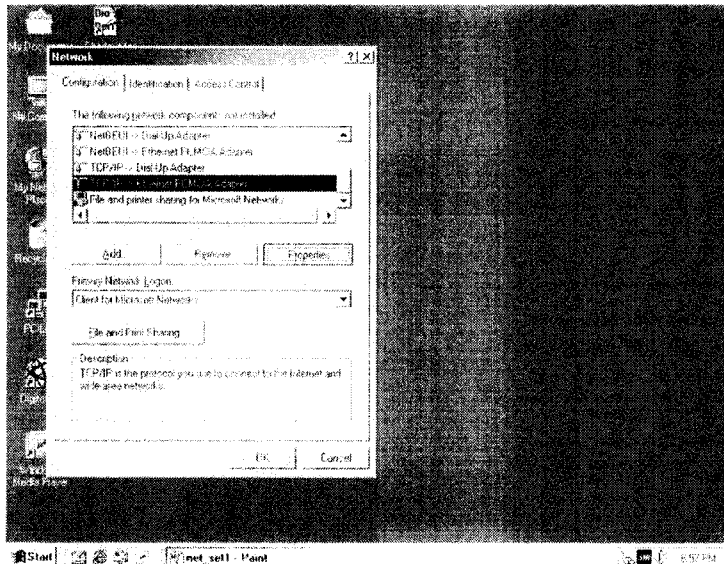
8) Click on the Help Topics icon (rightmost icon) for more information on how to use the program.

16. Network Setting

- 1) Select "My Network Places" and Press M.Right button.

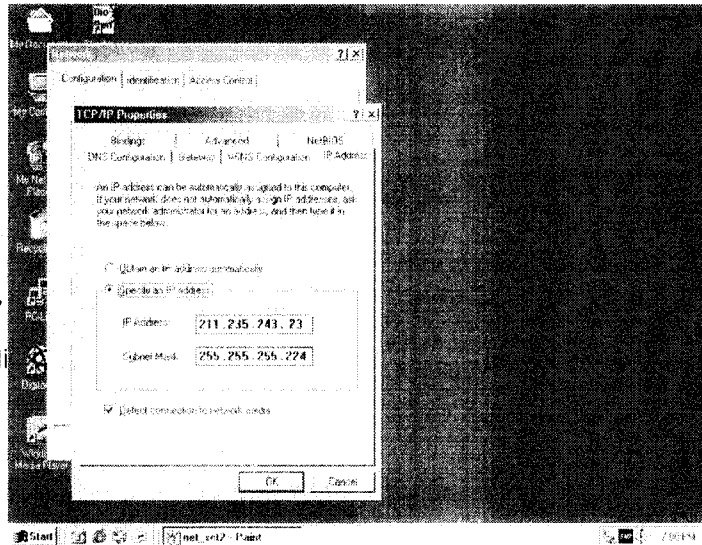


- 2) Select "TCP/IP" and Press button "Properties."



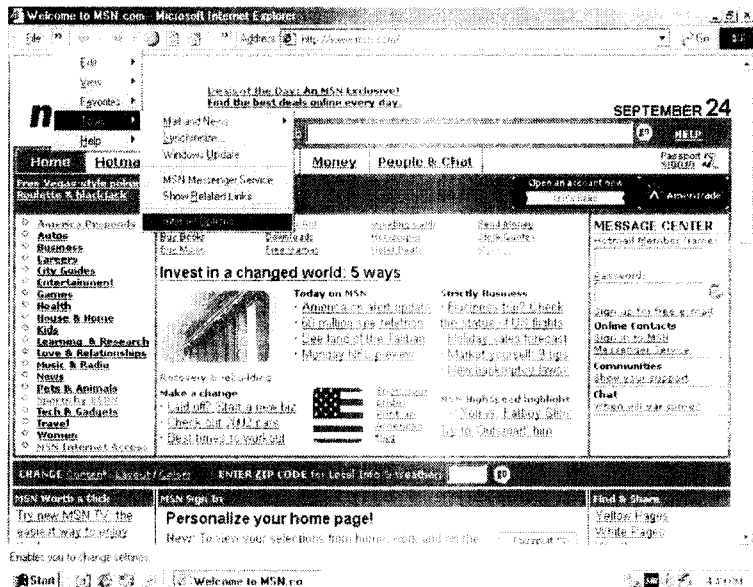
3) Set "IP Address", "Subnet Mask", "Gateway", and "DNS".

4) And then, Restart.

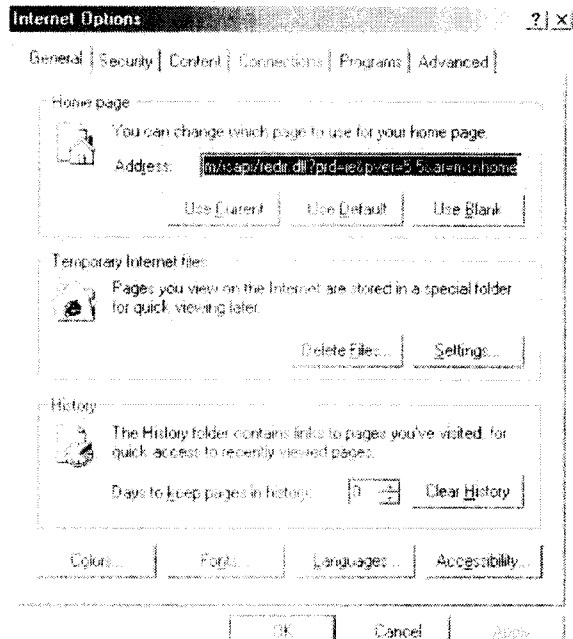


17. To Input URL easily in Windows Internet Explorer

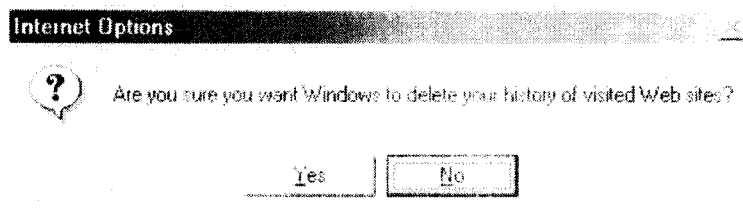
1) Select "Tools" and click "Internet Options" in Windows Internet Explorer.



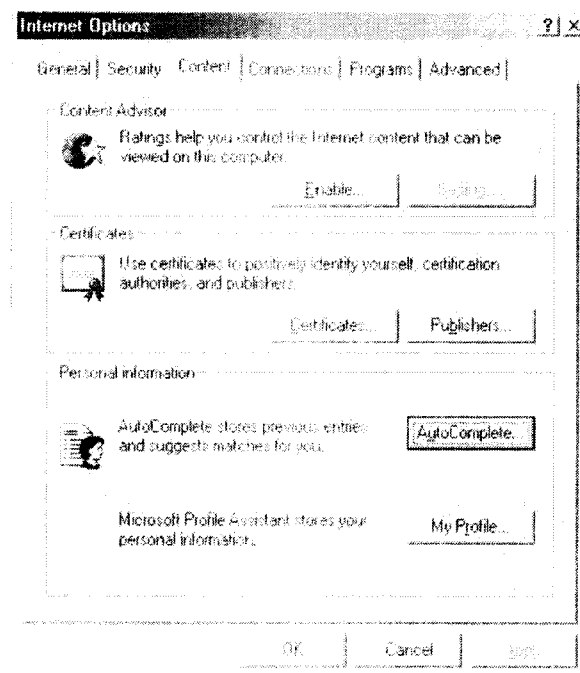
- 2) Set "Days to keep pages in history" to "0" and click "Clear History" button.



- 3) Click "Yes" button.

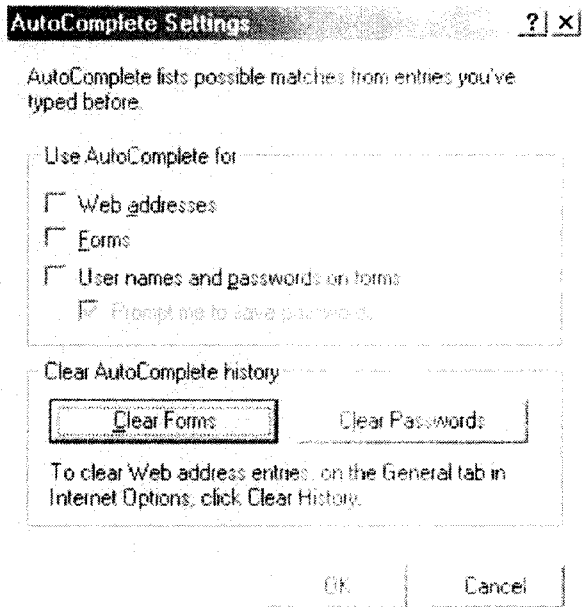


- 4) Select "Content" and click "AutoComplete" in "Internet Options" Dialog Box.

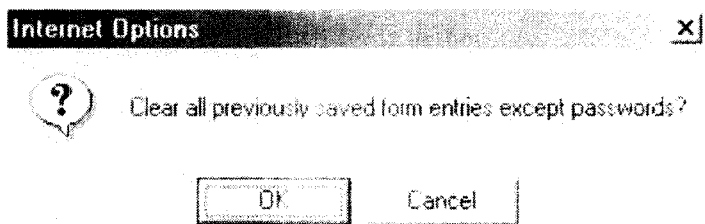


5) Release Check in "Web addresses", "Forms", and "User names and passwords on forms".

6) Click "Clear Forms".

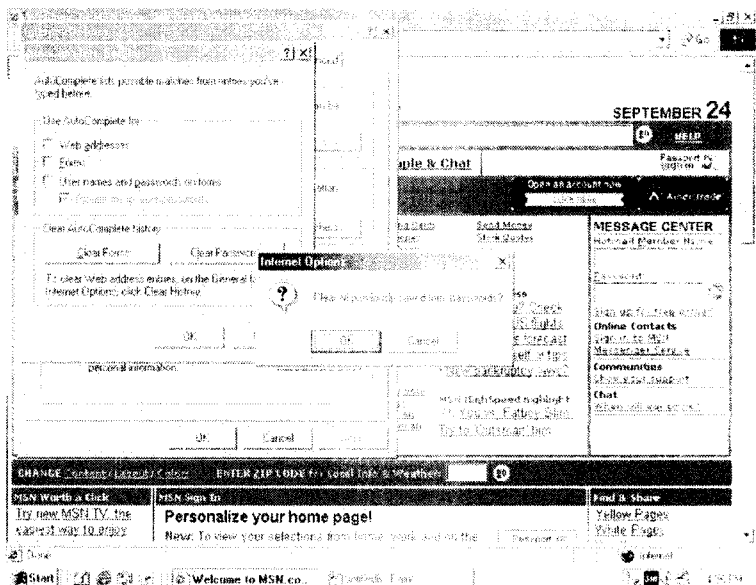


7) Click "OK" button.



8) Click "Clear Passwords".

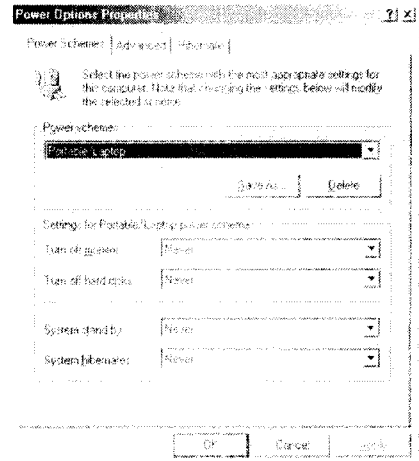
9) Click "OK" button.



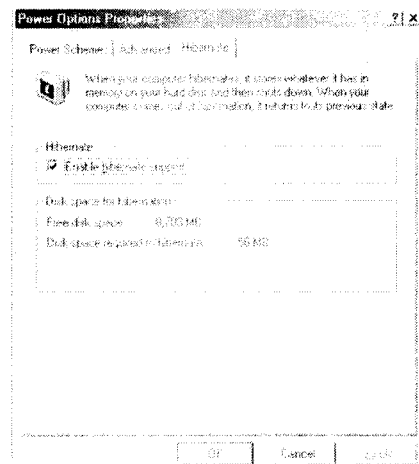
18. Hibernation

When your computer hibernates, it stores whatever it has in memory on your hard disk and then shuts down. When your computer comes out of hibernation, it returns to its previous state.

1) [Start] -> [Setting] -> [Control Panel] -> [Power Option Properties]

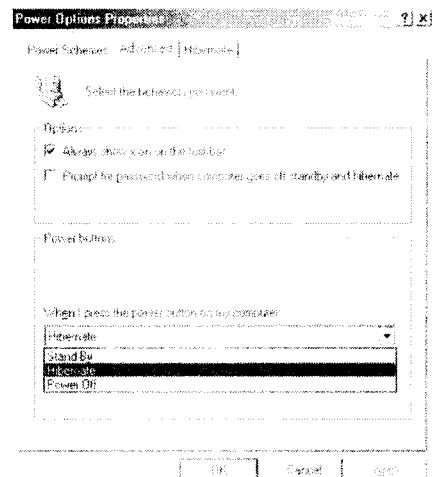


2) Select "Hibernate".



3) Check "Enable hibernation support"

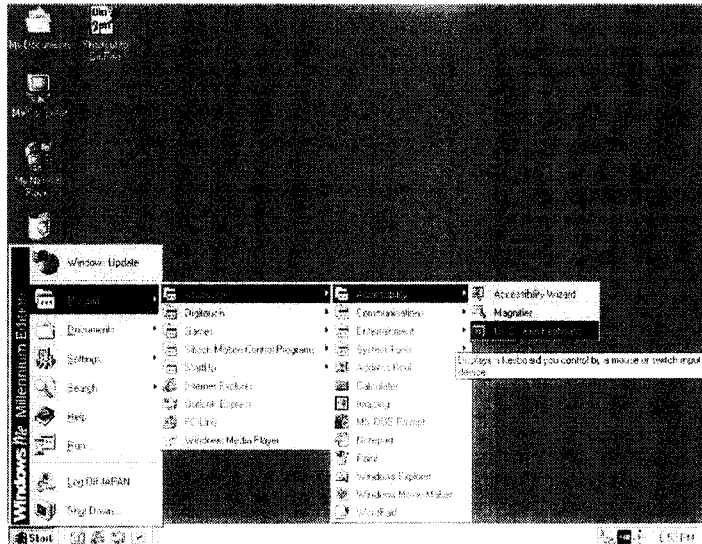
4) Select "Hibernate".



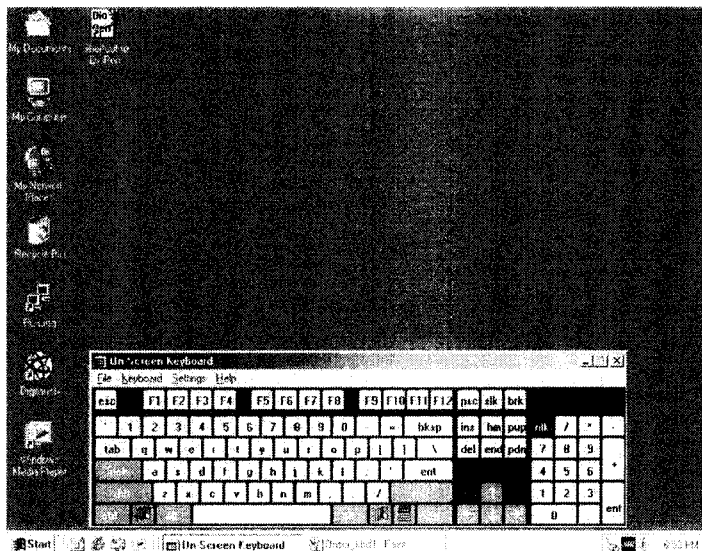
5) Click "OK" button.

19. To excute OnScreen Keyboard

- 1) [Start] -> [Accessories] -> [Accessibility] -> [OnScreen Keyboard]



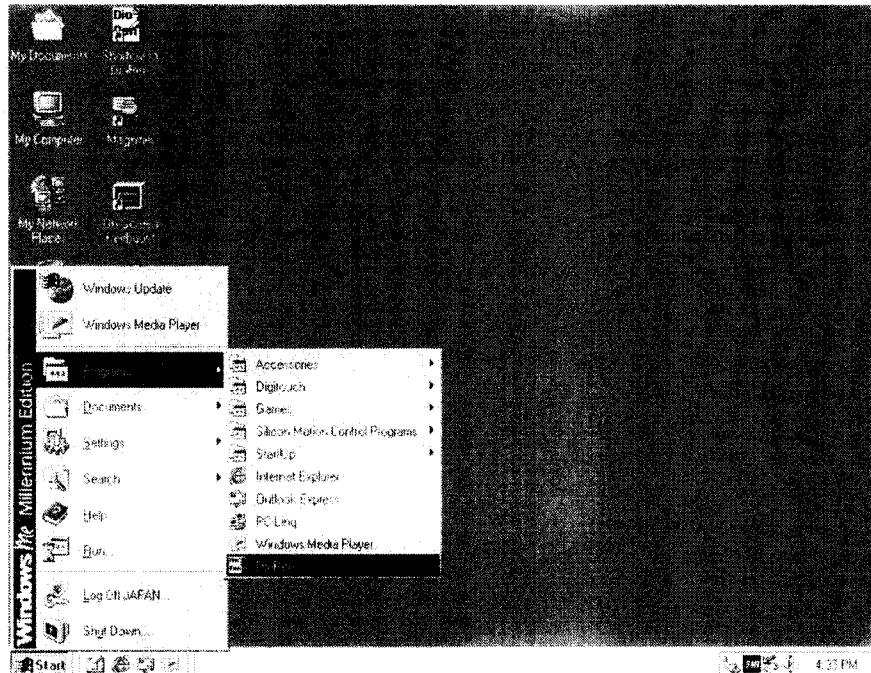
- 2) Input character to where you want.



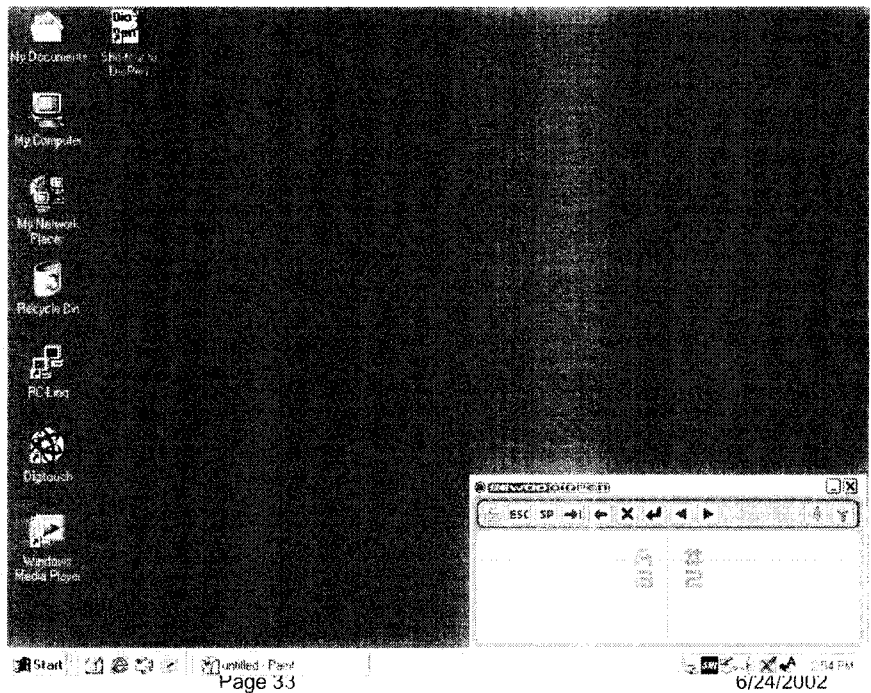
20. HOW TO USE SEWOO DIOPEN

Sewoo Diopen is an application to input characters in Window 98 environment and cannot be used in DOS mode.

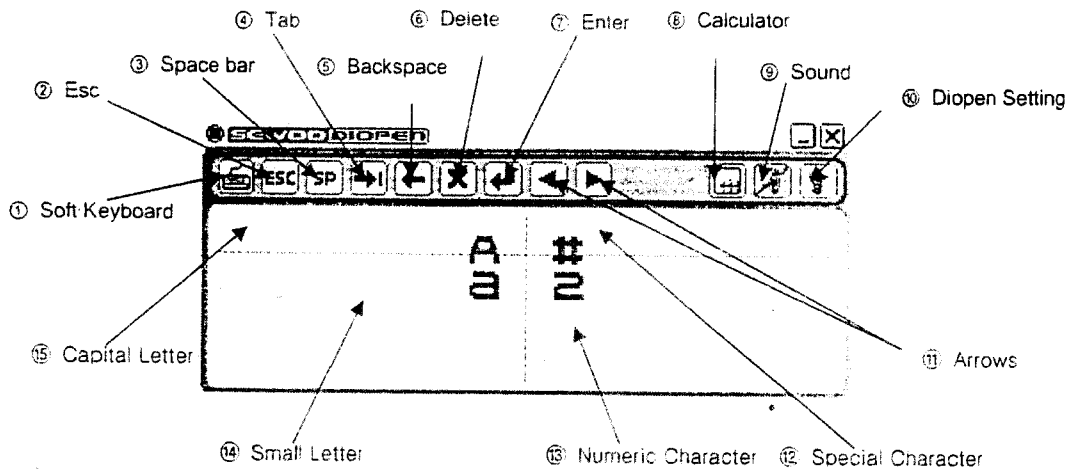
- 1) Select Sewoo Diopen Icon from Desktop



- 2) Active Sewoo Diopen in Windows



* See the following picture for descriptions for Sewoo Diopen functions.



- ① Soft Keyboard: Turns Sewoo Diopen window to Soft Keyboard.
- ② Esc:
- ③ Space Bar:
- ④ Tab:
- ⑤ Back Space:
- ⑥ Delete:
- ⑦ Enter:
- ⑧ Calculator: Opens Calculator.
- ⑨ Sound: Sets the sound when the characters are entered.
- ⑩ Sewoo Diopen Setting: Sets settings for Sewoo Diopen.
- ⑪ Arrows Keys: Up and down arrows.
- ⑫ Special Character: Recognizes the Special Characters.
- ⑬ Numeric Character: Recognizes the Numeric Characters.
- ⑭ Small Letter: Recognizes Alphabets and inputs Small Letters.
- ⑮ Capital Letter: Recognizes Alphabets and inputs Capital Letters.

21. WARNING

This device complies with part 15 of the FCC Rules. Operation is subject to the following two conditions: (1) This device may not cause harmful interference, and (2) this device must accept any interference received, including interference that may cause undesired operation.

How to use Free-hand writing Recognition

Alphabet

A	B	C	D	E	F	G	H	I	J	K	L	M
a	b	c	d	e	f	g	h	i	j	k	l	m

N	O	P	Q	R	S	T	U	V	W	X	Y	Z
n	o	p	q	r	s	t	u	v	w	x	y	z

Numeric Character

1	2	3	4	5	6	7	8	9	0
1	2	3	4	5	6	7	8	9	0

Special Character

.	!	@	#	\$	%	^	&	*	"	()	-	+	=	/
---	---	---	---	----	---	---	---	---	---	---	---	---	---	---	---

.	!	@	#	\$	%	^	&	*	"	()	-	+	=	/
---	---	---	---	----	---	---	---	---	---	---	---	---	---	---	---

[]	{	}	<	>	'	"	,
---	---	---	---	---	---	---	---	---

[]	{	}	<	>	'	"	,
---	---	---	---	---	---	---	---	---

Space	Backspace
-------	-----------

Space	Backspace
-------	-----------