

123

SESAME STREET[®]

Real Digital Camera



Please read before operating this equipment.

Model: KSE138

Preface

Thank you for your selection of this digital camera. Please carefully read the manual before using it and put the manual in a safe place for reference in the future.

The content covered by this manual refers to the latest information available when it was compiled. The screen display and illustrations, etc. in this manual are meant to describe the operation of this digital camera more specifically and directly. Due to differences in technical development and the production batch, they may be a little different from the digital camera you have purchased.

Safety Precautions

General Precautions

- Generally, this product should not be used or put in any area that is dusty, dirty or sandy, which could damage the components.
- Do not put the product in an environment with high temperatures. The high temperatures will shorten the life of the electronic device, damage the battery and cause some plastic parts to bend or melt.
- Do not keep the product in an area with low temperatures. If the product is kept in areas with low temperatures, the inside of the camera may develop water condensation which can damage the circuit when the temperature rises to normal levels.
- To avoid damage, do not open the camera case or attempt any unauthorized repairs.
- Do not drop or hit this product. Rough treatment will damage the internal components.
- Do not use abrasive chemicals or detergents to clean the product. Please use a wet soft cloth to wipe it.
- The battery cover cannot be opened when shooting. If you open the cover, you cannot store the current images and the stored data will be lost when the camera is turned off.

Precautions for LCD screen

If the LCD screen is cracked or damaged, please make sure that the liquid in the screen doesn't flow out. If this situation occurs, please take the following steps:

- If the liquid touches your skin, please use a clean cloth to wipe and then wash the skin with plenty of clean water.
- If the liquid touches your eyes, please wash your eyes with clean water for at least 15 minutes and then see a doctor as soon as possible.
- If the liquid is accidentally swallowed, please gargle with clean water and then drink a lot of water to force vomiting. Then see a doctor as soon as possible.

Operating Conditions

- The camera is designed to be used in temperatures ranging from 0 to 410 (32 to 104).
- The camera cannot be used or put in the following areas :
 - Directly under the sun
 - Damp or dusty areas
 - Places exposed to extreme temperatures
 - Do not leave in a closed vehicle, especially when under strong sunlight
 - Areas with violent shaking

Introduction to camera functions

The camera can be used to shoot photos and video episodes (without sound) with a resolution of 640×480. You can select the shooting view through the full color LCD display screen, which can also be used to browse the photos you have already. The camera can be used as a removable disk/storage device — like a USB stick, it can be plugged into computer to upload photos — and video camera (PC Camera) after connecting to the computer (driver must be installed first) for uploading photos and AVI short films to your computer. The PC Camera function can be used to transfer network videos.

Main functions

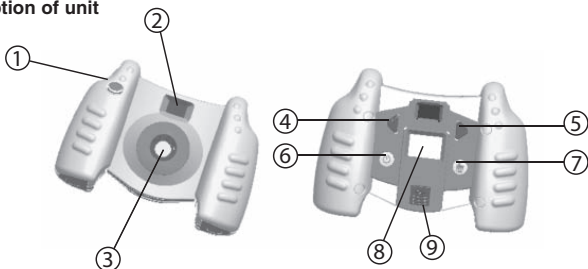
Taking photos, shooting video (without sound), playback, PC Camera, Mass Storage.

System requirements

During the operation and application of the digital camera, please refer to the minimum computer system requirement for the camera. We strongly suggest you use a better computer device to operate the camera to achieve the best effect. The minimum system requirements are as follows:

System requirement	
Operating system	Microsoft Windows 2000,7,XP,VISTA
CPU	Intel Pentium166MHz or above
RAM	128 MB or above
Soundcard, graphic card	Sound card and graphic card support DirectX8 or higher version
CD-ROM	4 x speed or above
Hard disk	500 MB available space or above
Other	USB 1.1 or USB 2.0 interface

Description of unit



Location of Controls

- ①—Shutter button ②—Viewing window ③—Lens ④—Previous button
 ⑤—Next button ⑥—Power/Mode button ⑦—Del button ⑧—LCD display screen
 ⑨—USB interface

Function of the buttons

Buttons	Function in the shooting mode	Function in the playback mode
Power/Mode button	Press the On/Off button to get started. Press again to select Photo mode or Video mode.	Press to return to Photo or Video mode.
Shutter button	Press to start taking picture or capturing video.	N/A.
Previous button	Press to change the photo or video resolution.	Press to return to the previous photo or video.
Next button	Press to enter Playback mode.	Press to advance to the next photo or video.
Del button	N/A.	Press to delete the current photo or video.

Installation of the driver

1. Operating systems supported by the driver

- Windows 2000
- Windows XP
- Windows 7
- Windows Vista

2. Installation of the driver

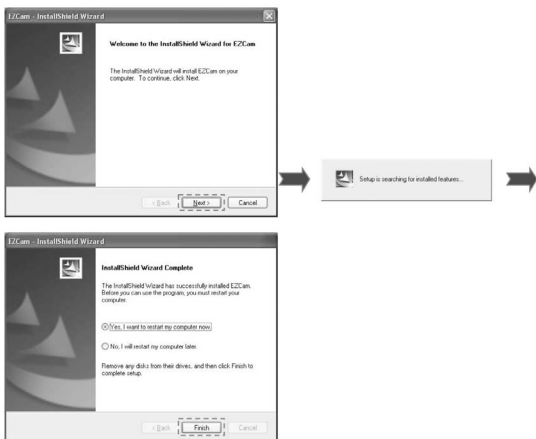
Start the computer and insert the driver CD.

The system will automatically run the installation program in the CD and the screen will display the following window:



(If your CD-ROM has no automatic run function, please directly click the autorun.exe program under the root directory in the CD and run it)

Click the "Install Driver" button and finish the installation according to the prompt.



Connect the camera to an available USB port on the computer with a USB cable. The system will locate the new device and its corresponding driver.

Note:

- Install the driver before connecting the camera to the computer.
- The driver has to be installed Windows 98 SE when using the Mass Storage function. Windows XP and Vista can automatically identify the Mass Storage device and no driver is needed.
- No matter which version of Windows you are running, the driver is needed when using the PC Camera function.
- Please re-start the computer after installing the driver.

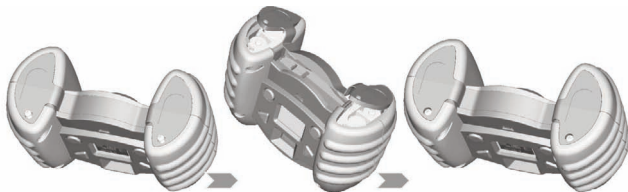
Basic operation

1. Installing the battery

- Open the battery compartment door on the bottom of unit by removing the screw with a screwdriver (not included) and lift up.
- Insert four (4) "AA" size (1.5V x 4) batteries (not included) as per the polarity marking inside the battery compartment.
- Replace the battery compartment door and screw.

Battery Precautions:

- Install batteries correctly observing the polarity (+,-) signs to avoid leakage.
- Do not mix old and new batteries.
- Do not use batteries of different types.
- Remove exhausted or new batteries from equipment when you are not going to use the unit for a long time.
- Do not dispose of batteries in fire.



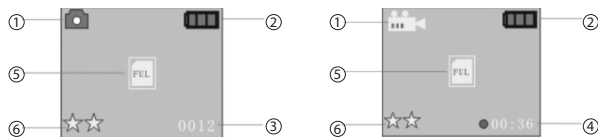
2. Turning the Camera Power On and Off

Press Power/Mode button to switch on the camera.

Press Power/Mode button for two seconds to switch off the camera.

The camera will automatically turn off if there is no operation within 30 seconds.

3. Screen display of the Photo and Video mode



Icon	Description
1	Mode: Photo Video
2	Battery indication: Battery Low Battery Full
3	Photo number (Photo mode): Displays the remaining number of photos that can be taken
4	Timer (Video mode): Displays the elapsed time for video capture
5	Memory status: Displays when the memory is full.
6	Photos resolution: 0.3M; 0.1M

4. Taking a Photo

Enter Photo mode, then press the shutter button to take a photo.

5. Recording

1. Press Power/Mode button to switch to Video mode.

2. Press the Shutter button to start recording, press the shutter button again to stop recording.

6. Screen display in playback mode

Enter Photo mode, then press the shutter button to take a photo.



Icon	Description
1	Playback mode: playback the photos or video
2	Battery indicator: Battery Full Battery Low
3	Serial number of the photos or video
4	Video playing timer
5	Prompt for no photo or video
6	Delete
7	Delete confirmation
8	Delete cancellation

7. Playback photos or videos

Switch on the camera: Press the Next button to enter Playback mode. Then press the Previous or Next button to select the photos or videos. To play the selected video, press the shutter button.

Deleting files: Press the Del button in Playback mode; the screen will display the delete icon ; Press the left and right buttons to select and . Then press the Del button to confirm to delete the current photo or video. Press any button to cancel the deletion.

After all the photos or videos files are deleted, the screen will display .

Press the Power On/Off button to return to Photo mode.

8. Upload the photos or videos to the computer

To upload photos or videos: Connect the camera to the computer with the USB cable to enter Removable Disk mode. The photos or videos can be uploaded to the computer directly.

Note: The camera works best outdoors or in bright light.

Using the PC Camera function

1. Install the CD driver to the computer.
2. With the camera turned off, connect the USB cable to the computer while the shutter button is pressed. A PC Cam icon will be displayed on the camera screen. The camera will be set to PC Camera mode automatically.
3. Release the shutter button.
4. Open the start up menu on the computer and select "All Programs" then "Easy Camera" then "PC Cam" to launch the PC Camera function. The PC Cam screen will show the images captured by the camera.



▲ Figure 1

Note: If PC Cam operation fails, connect to the computer again or try again by re-starting the computer or camera.

Technical specifications

Image sensor	Sensor with 300K pixels	
Main function	Taking photos, shooting videos, photo/video playback, removable disk, PC camera	
Lens	F2.8 f=5.4mm	
Focus scope	120cm~infinite	
Shutter	Electronic shutter	
LCD display screen	0.95" CSTN LCD	
Photo resolution	640×480	
Video resolution	QVGA 320×240, 20fps	
White balance	Automatic	
Exposure	Automatic	
File format	Video	AVI
	Photos	JPEG
Memory medium	4 × 16Mb SDRAM	
USB interface	Mini USB1.1 interface	
Power supply	4 x 1.5V "AA" alkaline batteries	

Trouble shooting guide

The camera cannot be switched on	The batteries are low or weak. Please replace with new batteries.
	The batteries are installed incorrectly. Please make sure the polarity of the batteries are installed correctly.
Blurry photos	Hand shakes when taking photos. Please hold the camera steady with the hands or stabilize the camera with a tripod or other flat surface. Never shake the camera when taking photos.
	The minimum focus range for this camera is 120 cm or approximately 4 feet. If photos are taken closer than four feet from the subject, they will appear blurry. Please be sure that the distance from the subject is greater than 4 feet before taking photos.
Dark photos or videos	The light is insufficient in the recording environment. Please make sure there is enough ambient light or turn on room lights before taking photos or shooting videos.
The camera automatically switches off	If there is no operation for 30 seconds, the camera will automatically perform the power saving function and turn off the power.
	The batteries are low or weak. Please replace with new batteries.

FCC INFORMATION:

This device complies with Part 15 of the FCC Rules. Operation is subject to the following two conditions: (1) This device may not cause harmful interference, and (2) This device must accept any interference received, including interference that may cause undesired operation.

USER INFORMATION:

Warning: Changes or modifications to this unit not expressly approved by the party responsible for compliance could void the user's authority to operate the equipment.

NOTE: This equipment has been tested and found to comply with the limits for a Class B digital device, pursuant to Part 15 of the FCC Rules. These limits are designed to provide reasonable protection against harmful interference in a residential installation. This equipment generates, uses and can radiate radio frequency energy and, if not installed and used in accordance with the instructions, may cause harmful interference to radio communications.

However, there is no guarantee that interference will not occur in a particular installation. If this equipment does cause harmful interference to radio or television reception, which can be determined by turning the equipment off and on, the user is encouraged to try to correct the interference by one or more of the following measures:

- Reorient or relocate the receiving antenna.
- Increase the separation between the equipment and receiver.
- Connect the equipment into an outlet on a circuit different from that to which the receiver is connected.
- Consult the dealer or an experienced radio/TV technician for help.

The USB extended cable with ferrite ring is designed for exclusive use with this product. Don't use others for this product.

Designed and Licensed by Kids Station Toys Incorporated.
PO Box: 694660 Miami, Florida 33269-4660
Kids Station Toys Incorporated. All Rights Reserved.
1-888-321-7191

Sesame Workshop®, Sesame Street® and associated characters, trademarks and design elements are owned and licensed by Sesame Workshop. © 2010 Sesame Workshop. All Rights Reserved.

Printed in China KSE138-IB-E0DQ1-A0US