

Contents

Contents 0

Function Description 1

Notice for use 2

System requirements 4

Start to use 5

 1. Appearance and Buttons 6

 2. Basic operation 8

Application of Attached ArcSoft MediaImpression 13

 Introduction interface for software installation 13

 MediaImpression Installation and Use: 14

Product specifications: 20

Warning: Changes or modifications to this unit not expressly approved by the party responsible for compliance could void the user's authority to operate the equipment.

NOTE: This equipment has been tested and found to comply with the limits for a Class B digital device, pursuant to Part 15 of the FCC Rules. These limits are designed to provide reasonable protection against harmful interference in a residential installation. This equipment generates, uses and can radiate radio frequency energy and, if not installed and used in accordance with the instructions, may cause harmful interference to radio communications.

However, there is no guarantee that interference will not occur in a particular installation. If this equipment does cause harmful interference to radio or television reception, which can be determined by turning the equipment off and on, the user is encouraged to try to correct the interference by one or more of the following measures:

- Reorient or relocate the receiving antenna.
- Increase the separation between the equipment and receiver.

- Connect the equipment into an outlet on a circuit different from that to which the receiver is connected.
- Consult the dealer or an experienced radio/TV technician for help.

This device complies with Part 15 of the FCC Rules. Operation is subject to the following two conditions : (1) this device may not cause harmful interference, and (2) this device must accept any interference received, including interference that may cause undesired operation

Function Description

Welcome to purchase and use this digital video camera. Before use, please read this user manual carefully.

With this digital video camera, you can take video clips and still photo. With the playback function, you can playback the taken video with this digital video camera; in addition, you can download the video from the digital video camera into your PC. When prepared, this user manual refers to the latest information. The screens and illustrations etc in this user manual are to particularly and visually detail the operation of the digital video camera. Due to technology development and different production batches, the digital video camera herein may be different from that you buy and use.

Notice for use

General:

1. Never open the housing of the digital video camera; otherwise, some parts may cause electric shock.
2. Damp, pressure, collision and overheat may damage this digital video camera.

Memory and storage:

1. SD/MMC/SDHC can be used (but not included in the packing list and maximal capacity 16GB).
2. When buying SD/MMC/SDHC card, be sure to take the digital video camera with you so as to ensure compatibility.
3. When SD/MMC/SDHC card is inserted, the memory of the digital video camera will not function.
4. SD card has a write-protect switch, which can be used to prevent wrong deletion of data. When this switch is pushed to the bottom and locked, the data in the card will be protected. However, when the card is in write-protect state, it cannot be used for shooting or deletion etc.
5. These memory cards cannot be used for permanent storage of data. You must copy the documents in the digital video camera to the proper storage position.
6. When storing documents into the memory or the memory card, make sure that the size of the documents does not exceed the capacity of the memory.

Maintenance and care:

1. In use, always wear the wrist band so as to prevent slip.
2. Use proper protection sheath to avoid scratching the lens and screen.
3. To clean the lens, firstly blow away the dust on its surface, then use proper cloth or tissue for optical devices to clean the lens. If necessary, use lens cleanser. Never use organic cleanser to clean the digital video camera.
4. Never touch the lens with fingers.

5. When left idle for long, keep the digital video camera with the battery taken out in dry and dark place.

Other notices:

1. When switching video output between LCD display and video devices, be sure to exit from the play or record state.

2. This digital video camera is suitable the environment between 0°C - 40°C (32°F -104°F). Never keep the digital video camera in the place at extremely high temperature, such as in the car parking under the burning sun, or with much damp. In order to prevent the digital video camera from condensation, when moving from a cold place to a warm place, be sure to keep it in sealed plastic bag, and open the bag and take it out when the digital video camera reaches the indoor temperature.

3. TV programs, movies, music, images and other resources may be protected by copyright; therefore, without prior permission, the shooting/use of these resources may violate copyright laws and regulations related. Please note that the resources under the protection of copyright can be used within the permission of related laws and regulations.

System requirements

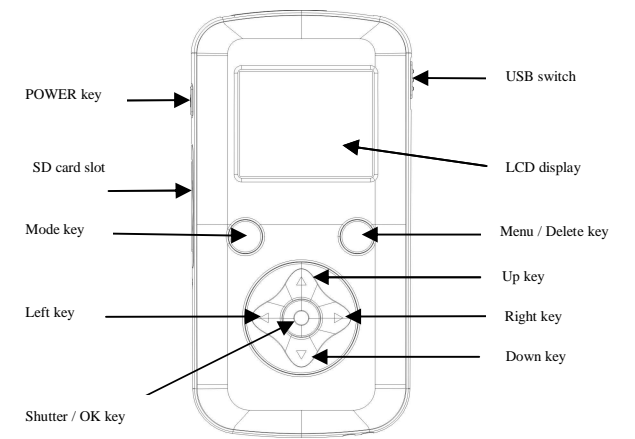
When operating and using this digital video camera, be sure to meet the requirements on the basic system for computer. It is strongly recommended to use the best computer units to operate the camera so as to bring its functions into full play. Below are the requirements on the basic system:

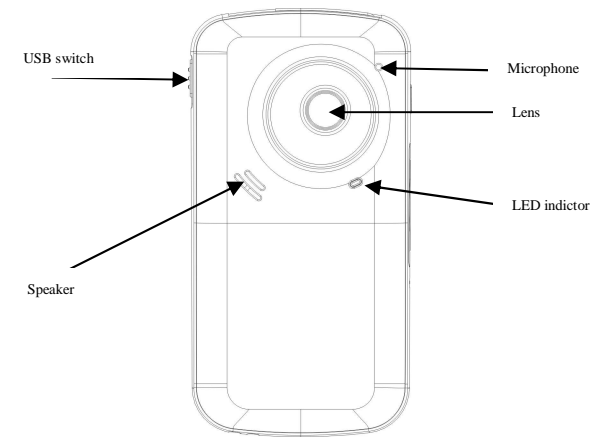
Operation System	Microsoft Windows 2000,XP, vista, Windows7
CPU	Above Intel PIII667 or CPU of equal performance
Memory	Above 128 MB

Sound card and display card	DirectX8 or above.
CD-ROM	4x speed or above
Hard Disk	1 GB space above useable
Other	One standard USB 1.1 or USB 2.0 port

Start to use

1. Appearance and Buttons





2. Basic operation

2.1 Install battery

Press / slide down the Battery Cover and insert 3pcs AAA battery. Align with correct polarity of battery terminals. then close the Battery Cover.

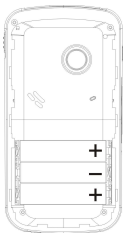
2.2 Use SD/MMC/SDHC card

Insert the SD Memory card into the SD/MMC/SDHC Card Slot. Push it down until the card stays latched. Do not force – check card's position according to the position mark on the camera.

Push and release inserted card if you wish to remove or replace the card.

Turn your camcorder OFF before inserting / removing the SD Card.

- Note that the SD Card has a tiny LOCK switch on the side. Set the switch to un-LOCK position to be able to store recorded videos, still pictures on inserted SD Memory Card.



2.3 Power on/off

In power-off state, press the power key to power on the camera.

In power-on state, press the power key to power off the camera.

In power-on state, let the camera idle for 1 minute (default) to power off the camera automatically.

In power-on state, when battery level is very low, the camera will turn off after several seconds. You must replace the batteries.

2.4 Change mode

After power on, it will enter video recording mode, press MODE key to change mode between video record、 Still photo record、 Playback;

2.3 Video record

In Video record(Preview) mode, press Shutter key to start video recording, While recording, press the Shutter key again to stop recording.

At preview or recording mode, Press Up key or Down key can zoom in or zoom out the image.

2.6 Still photo record

In Still photo record mode, Press Shutter key can snap one photo,
At preview or recording mode, Press Up key or Down key can zoom in or zoom out the image.

Note:

- While the memory card is full or locked, and you press the Shutter key, the camera will not recording.
- Before insert or remove the card, please turn off the camera first.

2.7 Playback videos or photos

Press Mode key to enter playback mode, press ◀ key or ▶ key to select another file.
After you select one video file, Press OK key to begin play video, press OK key again to stop playing.

While playback one photo, Press up key or down key can zoom in or zoom out the image; at zoom in mode, press OK key can enter pan mode, at this time you can press direction key to move the photo to view in LCD.

2 Delete files

When in playback mode, Press the Delete key will enter Delete menu mode, use direction key of Left or Right to select "All", "No" or "Yes" .

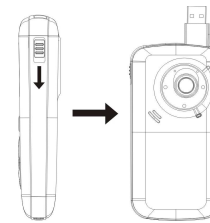
Select "Yes" then press OK key will delete current image; if select "All" then press OK key will delete all images, if select "No" or press Delete key will exit deletion.

3 Connect to PC

1. Slide the USB Switch DOWN to extend the USB connector. And turn the camcorder ON.
2. Insert camcorder USB connector into computer's USB port, or use supplied USB extension cable to make connection.

4 Download files from camera to PC

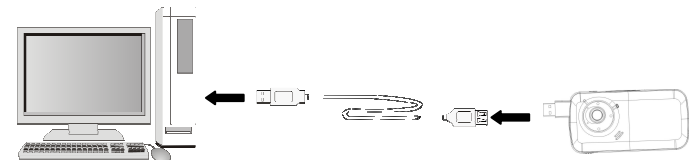
1. After connecting to computer, go to "My Computer" and open the "Removable Disk." The videos will be saved in the \DCIM\100MEDIA folder in the removable disk. Choose the desired video in the 100MEDIA folder and copy (drag with mouse) it into the target folder in the HD of the computer.
2. You can use ArcSoft MediaImpression to edit videos.
3. ArcSoft MediaImpression can be installed from CD attached.



▲ Open USB port



▲ Connect camera to PC (1)



▲ Connect camera to PC (2)

Application of Attached ArcSoft MediaImpression

There is one software in CD provided for image processing: MediaImpression

Introduction interface for software installation

Put the CD attached into the CD-ROM of the computer, then the following menu will occur:

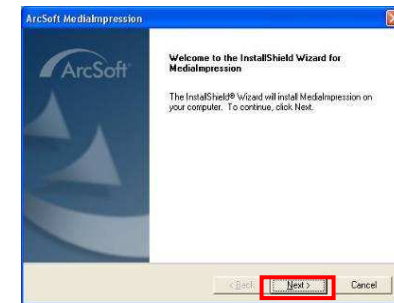


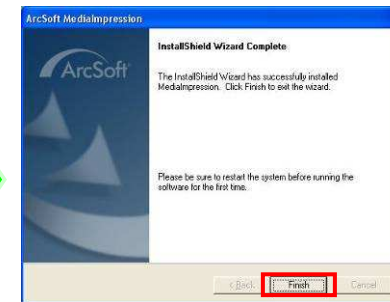
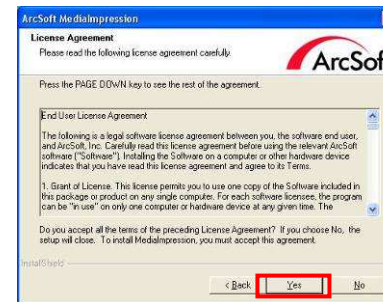
- If the CD driver does not automatically carry out or close such function, please double click **autorun.exe** program under the root directory of the CD.

MediaImpression Installation and Use:

Install MediaImpression:

Click "Install MediaImpression" button and complete the installation as per the tips.





uter.

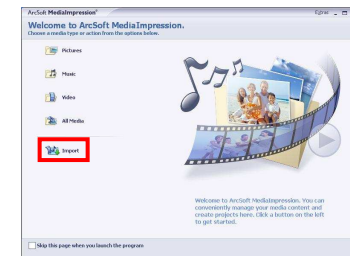
Run MediaImpression :

Double click the  icon on the desktop or follow "Start → Programs" to open:

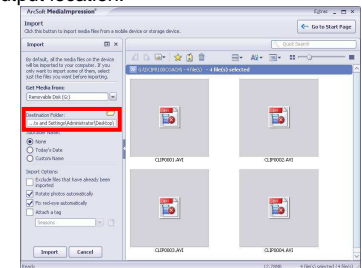
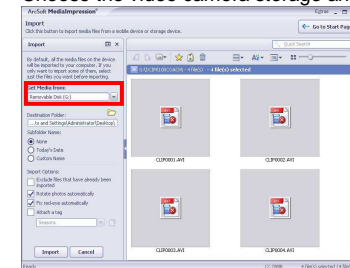
MediaImpression



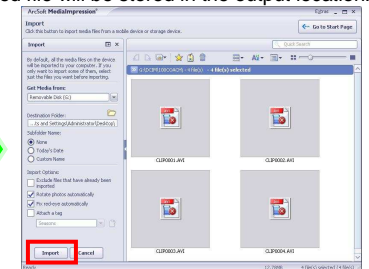
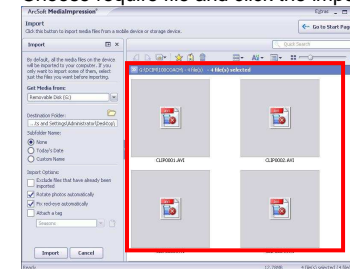
After starting MediaImpression, click the “Import” to import the media.



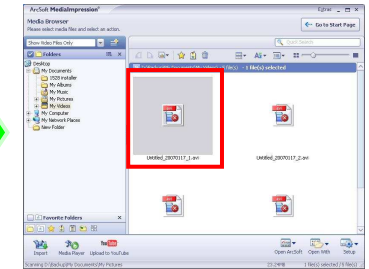
Choose the video camera storage and choose the output location.



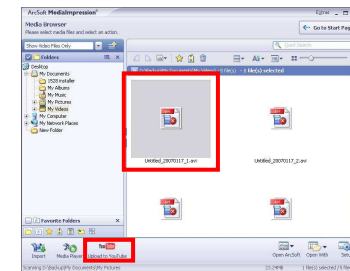
Choose require file and click the import, selected file will be stored in the output location.



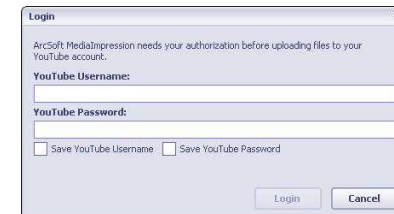
Click "Go to start page" to return the main screen, click the "Video" or "All media" to use the "YouTube" function.



Choose file and click the "upload to YouTube."



Enter your username and password to login the YouTube, execute upload.



Product specifications:

Image Sensor	300K Pixels
Function Mode	Record video, Record still photo, playback, mobile disk,
Lens	F2.8, f=3.8mm
Focus Range	120cm~infinite
Digital Zoom	4x
Shutter	Electronic
LCD Display	1.77 inch TFT Display
Resolution	Video: VGA(640x480) Still photo: 300K Pixels(640x480)
White Balance	Automatic
Exposure	Automatic
File Format	Video(AVI), Photo(JPG)
Storage Media	SD/MMC/SDHC card(max. 16GB)
USB Port	USB2.0 port
Dimension (LxWxH)	114mm x 60mm x 23mm