



DIGITAL VIDEO CAMERA  
USER MANUAL

<b>Table of Contents:</b>	
<b>FCC Part</b> .....	2
<b>Know your camera</b> .....	3
<b>Start to use</b> .....	5
Install Battery.....	5
Use SD Card.....	5
Selecting Lens Mode.....	6
Turning the camera ON and OFF.....	7
Selecting the MODE of the camera.....	7
Setting Date and Time.....	7
Indicators / LED lights.....	8
Video Recording mode.....	9
Camera mode.....	11
Playback mode.....	13
<b>Internal Setting of the camera</b> .....	17
Setting the Start-up Image.....	18
Changing the Start-up Image.....	18
<b>Connecting camera to the computer</b> .....	19
Installing the ArcSoft MediaImpression program.....	19
Using camera with the computer.....	21
Uploading your video clips to YouTube.....	21
<b>Connecting camera toTV</b> .....	25
<b>Technical Specifications</b> .....	26
<b>System requirements</b> .....	27

**HDV141**

**FCC part 15.21**

Warning: Changes or modifications to this unit not expressly approved by the party responsible for compliance could void the user's authority to operate the equipment.

**FCC part 15.105**

Note: This equipment has been tested and found to comply with the limits for a Class B digital device, pursuant to Part 15 of the FCC Rules. These limits are designed to provide reasonable protection against harmful interference in a residential installation. This equipment generates, uses, and can radiate radio frequency energy and, if not installed and used in accordance with the instructions, may cause harmful interference to radio communications. However, there is no guarantee that interference will not occur in a particular installation. If this equipment does cause harmful interference to radio or television reception, which can be determined by turning the equipment off and on, the user is encouraged to try to correct the interference by one or more of the following measures:

- Reorient or relocate the receiving antenna.
- Increase the separation between the equipment and receiver.

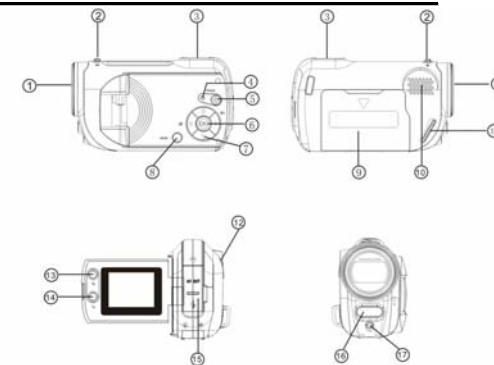
- Connect the equipment into an outlet on a circuit different from that to which the receiver is connected
- Consult the dealer or an experienced radio TV technician for help.

This device complies with Part 15 of the FCC Rules. Operation is subject to the following two conditions: (1) this device may not cause harmful interference, and (2) this device must accept any interference received, including interference that may cause undesired operation.

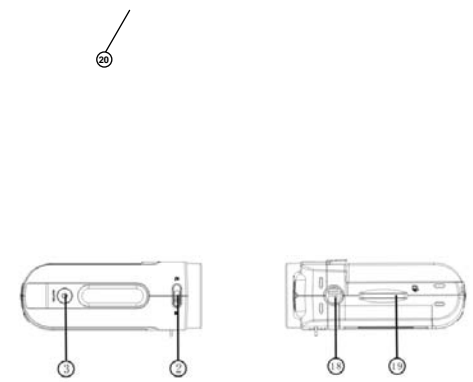
Pertinent testing documentation is available for verification.

**Know your camera**

1	<b>Lens</b>
2	<b>Lens selector</b>
3	<b>Shutter key</b>
4	<b>Busy light</b>
5	<b>Power key</b>
6	<b>OK button</b>
7	<b>Direction keys:</b>
	<b>Up</b>
	<b>Down</b>



	Right/ LED switch
	Left/ Self timer
8	Mode key
9	Battery cover
10	Speaker
11	Wrist strap loop
12	Wrist strap hole
13	Zoom in key
14	Zoom out key
15	USB/TV out port
16	LED light
17	Self timer indicator
18	Tripod socket
19	SD card slot
20	LCD Screen



### **Start to use**

**NOTE:** Please insert three fresh AAA batteries and SD/SDHC memory card to operate the camera

#### **1. Installing Batteries**

1. Press the top and slide down the Battery Cover.
2. Insert three fresh AAA alkaline batteries; align polarity of terminals correctly.  
Keep the black ribbon placed under installed batteries; pulling that ribbon later will help remove exhausted batteries.
3. Slide up the Battery Cover to close the battery compartment.

#### **2. Using SD Card**

**You must insert and use SD memory card; camera will store all recorded images and video on the card. Camera accepts SD card with up to 8GB capacity.**

Note that the card has a tiny "LOCK" slider located on the side.

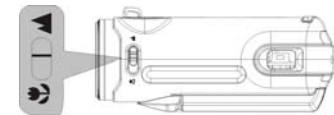
Set this slider to "non-LOCK" position before inserting and taking video or still images.

1. Push the SD card carefully into the slot until the card is completely inserted.
2. To remove / replace the card, lightly press / release inserted card to eject the card.
3. The SD card has to be formatted first: Press OK button and then press Right Direction key to enter Setup Menu. Press Up and Down Direction key to select 'Format'

option. Press Right Direction key and then press Up or Down Direction key to select 'Yes' option. The memory card will be formatted automatically.  
Please note that all DATA stored on SD card will be deleted during formatting.

### 3. Selecting Lens Mode


Slide the Lens Selector to **Normal** ▲ or Macro ▼ position depending on the distance between the main subject and the camera.



1. Use Normal setting ▲ for shooting subjects located 5 feet or more away from the camera
2. Use Macro setting ▼ for shooting close-up subjects that are just 6" – 10" from

camera

#### 4. Turning the camera ON and OFF

1. Power ON: press the Power key for a second or two to turn the camera ON.
2. Power OFF: when the camera is active press the Power key to turn the power OFF.  
Auto Power OFF: the camera will turn OFF automatically when has been unused for 1 minute. The Auto Power OFF delay time may be set at 1, 3 or 5 minutes.  
Go to Setup Mode / Power Save and make adjustment if necessary (see also Section 11 Setup the camera).
3. Low Power Indicator: When the batteries become exhausted, the LCD display will display low battery icon  and the camera will be automatically turned OFF.  
Replace exhausted batteries.

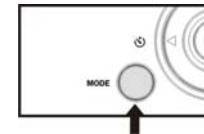
#### 5. Selecting the MODE of the camera

When powered ON, the camera is set in Video recording mode.  
Press the MODE key to change or select desired mode as follows:

**Video** (default mode) – recording video clips

**Camera** mode – taking still photos, images

**Playback** mode – playing back recorded video  
or displaying still photos



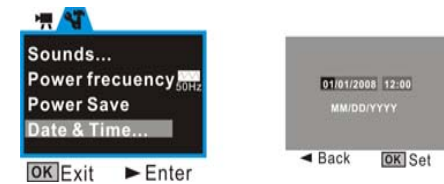


## 6. Setting Date and Time:

This option will help you identify “*when*” your images have been taken. This information will be added to “Properties” of each image and you can retrieve it using computer when camera is connected, or after images are downloaded into computer.

### Setting:

Press the OK button then press Right Direction key to enter Setup Menu. Press Up and Down Direction key to select ‘Date & Time’ option then press Right Direction key and the Date and Time will be displayed on the LCD screen, see below:



To set the Date and Time, use the Direction key: Up or Down to adjust, Right key to move the cursor. Press OK button to confirm setting and press it again to Exit setup mode. To leave the Date and Time unaltered, press Left then OK key to Exit the Setup mode.

Note that removing or replacing batteries may reset Data / Time setting; repeat setting if required.

## 7. Indicators / LED lights:

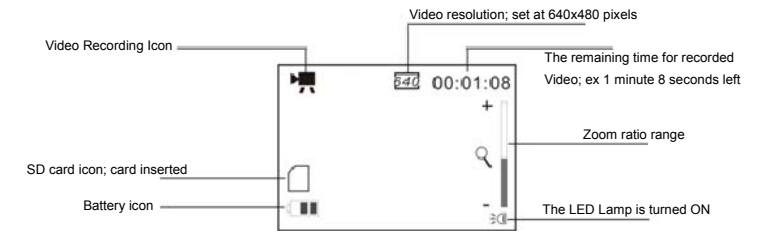
**Busy light** - the light will turn on when the camera is “busy” recording video, capturing photo, processing data, or being connected to computer.

**LED light** – this supporting light may be used when recording video/ pictures in dark environment. Please **note** that this lamp is effective for short distances only.

**Self Timer light** – indicates that the camera Self Timer has been activated.

#### 8. Video Recording mode:

##### Preview mode



##### Recording the Video clip

1. Open the LCD screen.

2. Press / hold the Power key and turn the camera ON
3. Press the Shutter key to start recording video
4. To stop recording, press the Shutter key again.  
Note that camera will auto-stop recording when the SD memory card is full.
5. You may press Zoom IN / OUT buttons during recording to select desired zoom range.



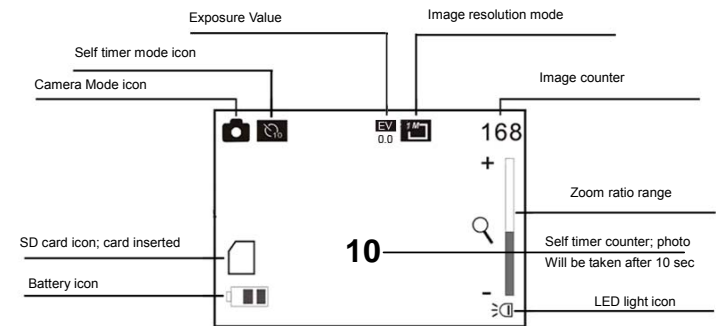
- The LCD screen acts as a viewfinder to help you more accurately point at and center the main subject or person while recording.

#### **Setting the resolution for recorded Video**

1. Press OK button to open the menu.
2. Press Up or Down Direction key and select 'Movie Size' option.
3. Press Right Direction key entering setting
4. Press Up or Down Direction key to select the required resolution setting: HD:1280 x 720, VGA: 640 x 480 or QVGA: 320 x 240pixels.

5. Press OK button to confirm your selection then press OK button to exit the menu.

**9. Camera mode:  
Preview mode**



**Shooting Photos**

1. Open the LCD screen and press / hold the Power key to turn camera ON
2. Press the Mode key once to select the Camera mode
3. Aim and observe the scene on the LCD screen and press the Shutter key to take a picture.

**Setting the resolution for taken photo**

1. Press OK button to open the menu.
2. Press Up or Down Direction key to select 'Resolution' option.
3. Press Right Direction key.
4. Press Up or Down Direction key to select the required resolution from available options shown: 5 Megapixel, 3 Megapixel or 1.3 Megapixel.
5. Press OK button to confirm the selection and press OK button to exit menu.

**Self Timer**

Press the Left direction key and a '10 sec delay self timer' icon will appear on LCD screen. Press the Shutter key; camera will beep for 10 seconds and Self Timer will then take one photo automatically.

Press the Left direction key to exit Self timer mode setting.

**Taking three continuous photos:**

Press OK button to open the menu then scroll down and select 'Driver Mode'. Press the Right key to enter sub-selection and scroll down to select 'Burst' option. Press OK button to exit the menu. A Burst mode icon will appear on LCD screen. Press the Shutter key and camera will auto-take three photos consecutively.

Press the Left Direction key to exit Burst mode setting.

#### **Taking photo with special effect**

1. Press OK button to open the menu.
2. Press Up or Down Direction key to select 'Effect' option.
3. Press Right Direction key.
4. Press Up or Down Direction key to select the required effect: Normal; B&W (Black and White); Sepia, Negative, Red, Green, Blue.
5. Press OK button to confirm the selection and press OK button to exit the menu.

#### **10. Playback mode:**

1. Press / hold the Power key to turn the camera ON
2. Press the Mode key twice to select the Playback mode; LCD screen will display last photo taken, or recorded video.

Corresponding icons will identify records as shown below:



You can select photos or video by pressing Left / Right direction key; press the Shutter key for playing / stopping recorded video.

You can also Zoom In / Out displayed photo by pressing the Zoom keys.  
After Zooming In you may press Left or Right direction key to enter into the "Pan" mode and view selected area of the image. Press the OK button to resume normal preview.

**Additional Playback options**

Select the Playback mode and press OK button to enter menu and you may choose among several available options:

For photo and video records:

- Lock: You can Lock / Unlock the photo / video currently displayed file
- Delete: You can Delete One or All files recorded stored on the SD card

For photo records only:


- Slide Show: You can setup and activate the Slide Show
- Effect: You can create Special Effect for displayed photo
- Rotate: You can rotate the photo 90 degrees clockwise
- Resize: You can lower the resolution of photo
- Voice Memo: You can add / delete voice record for displayed photo
- Start-up Image: You can select one stored photo and set it as the Start-up Image on camera LCD screen.


Note: Press OK key to execute the command and exit the Additional Option setting.

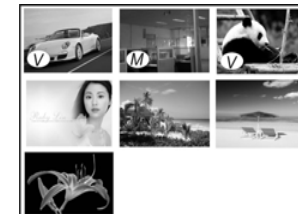
### Thumbnail mode

- In PLAYBACK mode, press Zoom Out Key to select the "Thumbnail" format.
- Press UP, DOWN, LEFT or RIGHT buttons to browse through images, then press OK (center button) to select image for an instant review.
- Press Zoom In Key to enlarge and view image in full resolution.
- Press Zoom Out Key to return to normal screen size and press same key again returning to "Thumbnail" format.

The Thumbnail icons (visible on the LCD screen) will identify files as follows:

 Icon indicates recorded Video (AVI file)

 Icon indicates still photo (JPG file) with added voice Memo  
"No icon" is displayed on still photos



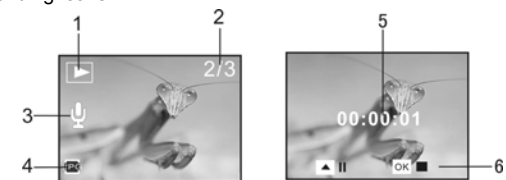


#### Adding the Voice memo for selected photo

1. Switch the camera to Playback mode.
  2. Browse to the photo you wish to add voice memo.
  3. Press OK button and select 'Voice Memo' option by pressing Up or Down Direction key
  4. Press Right Direction key and enter sub-menu options
  5. Scroll down and select the "Add" option; press OK key to confirm
  6. Counter appears on the LCD screen and camera is ready for recording voice memo.
  7. Speak your memo / message and the camera microphone will record the message.
  8. Press OK button again to stop recording voice memo.
- Note that the maximum time of recorded "memo" is limited to 30 seconds.

#### Playing back the Photo / Memo file

Select the photo with indicated voice Memo icon (Playback mode), see other corresponding icons:



- 1 Playback mode icon   2 Image counter   3 Voice Memo indicator
- 4 PHOTO file indicator   5 Playing time   6 Control panel for playing voice memo

Press the Shutter key to start playing the voice Memo of the photo (with added voice memo), or press OK key to stop playing.

Use the UP key to pause / resume playing the voice Memo if desired.

#### 11. Internal Setting of the camera

1. Press OK button; then press Right Direction key to enter the Internal Setup Menu (see the “tools” icon).
2. The following Options are displayed on the Setup Menu.  
Use the Up or Down Direction key to scroll / select desired option and press the Right key to enter following internal settings:
  - Sound:** You may turn sound On / Off. This includes sound emitted when tripping Shutter, Start-up, Beep sound (with any button is pressed) and self timer Beep sound. You may also change the Volume of audio sound.
  - Power Frequency:** You may also alter the Frequency setting of camera so that it adapts to match power supply and indoor fluorescent lamp at 60Hz.
  - Power Save:** Select desired auto Power turn Off at 1, 3 or 5 minutes.
  - Date & Time:** Set up the date and time (see Section 6: Setting Date and Time).
  - Language:** Change the menu setting in different languages.
  - TV Out:** Change the TV output to suit your NTSC television system.
  - Start-up Image:** You can Disable, reset the Default start-up Image or set your own

taken image / photo as the Start-up Image.

**Format:** Format the SD/MMC card (see Section 2: Using the SD Card).

**Reset all:** Reset all the options to default values (manufacturer's setting).

**Setting the Start-up Image:**

1. Select Playback mode and select a photo to be set as the "Start-up Image"
2. Press OK key and use Up / Down keys to select "Start-up Image" option and press OK key
3. Press Right Direction key and a sub-menu appears on LCD screen
4. Press Up / Down keys and select "Set" option; press OK button to confirm. The sub-menu disappears and camera displays and "memorizes" the photo you have selected.
5. Press OK key, then the Right direction key entering Internal Setting Menu
6. Use Up / Down keys and scroll / select the "Start-up Image" option
7. Press Right Direction key to enter the sub-menu and use Up or Down Direction key to select "My Image." Press OK key to execute setting.
8. Press OK button again to exit Internal Set-up.

After that, every time the power is turned ON the camera screen will display your selected photo as the Start-up Image.

**Changing the Start-up Image**

You can activate camera Internal Setting and scroll / select "Start-up Image" mode, then press the Right direction key to enter available settings.

Select your **preferences as below:**

**Off** – Only the “blank” screen will be displayed during turning camera ON.  
**System** – The Default Image will be displayed as the Start-up Image  
**My Image** – Camera will use your selected photo as the Start-up Image.

Note that if you select and execute the “Reset All” (from Internal Setting) option, this will also activate the Default Start-up Image according to manufacturer’s setting.

#### **Connecting camera to the computer**

Your personal computer (with typical programs installed) should be able to play back photos and recorded video from camera – when it is connected.

However we do suggest you install software from supplied CD before connecting camera to the computer; see simple instruction steps bellow.

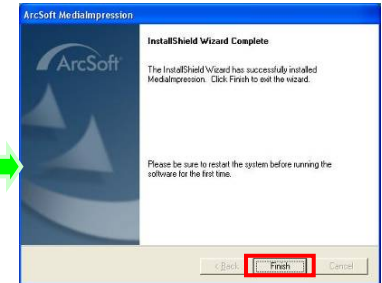
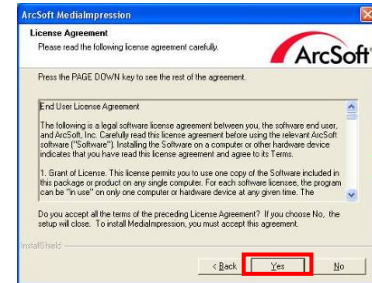
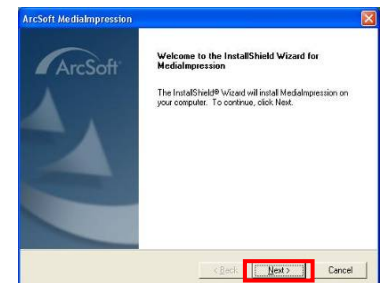
#### **1. Installing the ArcSoft MediaImpression program**

Insert supplied CD into computer CD-ROM drive.

The auto-run screen will appear. Click “Install MediaImpression”



( If the screen does not appear as the auto-run, please click on **SoftwareInstaller.exe** under the CD-ROM drive icon on the computer.)  
Follow on-screen instructions and complete installation.



After installation, please restart the computer.

## **2. Using camera with the computer**

- Use the supplied USB cable and connect camera to the computer, open camera screen and turn the power ON.
- Open "My Computer," then select the Removable Disc. Usually, the highest nomination (indicated by alphabetic letters) of the Removable Disc will identify your connected camera.
- Click open the Removable Disc then open the DCIM and 100MEDIA folder; this folder will contain all your video records and photos.
- You may "click open" selected file to review video of photos.
- You may also "download" all, or single photos, video and "drag" or store them in selected location as usually you do with all other files.

## **3. Uploading your video clips to YouTube**

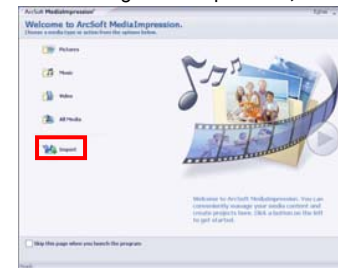
Installed ArcSoft MediaImpression program gives you easy access to the YouTube; please follow next simple steps.

Double click the  icon on the desktop or follow "Start → Programs" to open:

MediaImpression



After starting MediaImpression, click “Import” to import the media.



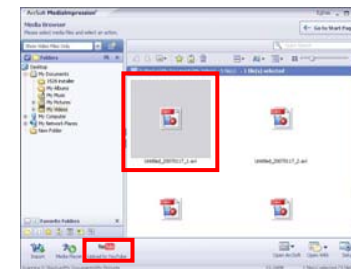




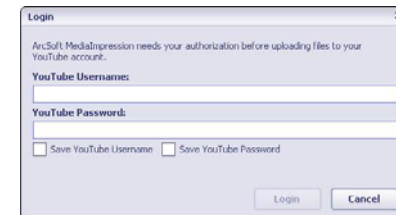
Click "Go to start page" to return the main screen, click the "Video" or "All media" to use the "YouTube" function.



Choose file and click the "upload to YouTube".



Enter your YouTube username and password to login and execute uploading video.



The image shows a standard Windows-style dialog box titled "Login". The text inside reads: "ArcSoft MediaImpression needs your authorization before uploading files to your YouTube account." Below this, there are two text input fields: "YouTube Username:" and "YouTube Password:". Underneath the password field are two checkboxes: "Save YouTube Username" and "Save YouTube Password". At the bottom right of the dialog box are two buttons: "Login" and "Cancel".

### Connecting camera toTV

You may also display all photos and recorded video on typical TV set.

1. Use AV cable (supplied with camera) and connect camera with TV.
2. Plug single-connector of the cable into camcorder's TV port, and connect double-connectors to Video (yellow) and Audio (red or white) input jacks of your TV.
3. Turn the TV and camera ON.
4. Select mode of your TV to VIDEO INPUT (see your TV Manual if it is required).
5. Set camera at the Playback mode then you can select, playback, review all your records on TV screen.

Enjoy the show!

**Technical Specifications**

<b>Video resolution</b>	720P: 1280x720 pixels, VGA: 640x480 pixels, QVGA: 320x240 pixels	
<b>Picture resolution</b>	1.3, 3 and 5 Megapixel	
<b>Lens</b>	F3.1 f=6.5mm	
<b>Focus settings</b>	Normal: 5 feet ~ infinity; Macro: 6" – 10"	
<b>Digital zoom</b>	4×	
<b>LCD display screen</b>	1.8" TFT color LCD screen	
<b>Memory card support</b>	SD Memory card, up to 8GB capacity (Memory Card not supplied)	
<b>Video storage</b>	VGA: Up to 7 hours approximately with 8GB SD/MMC card	
<b>Still Image storage</b>	VGA (640 x 480): over 40,000 pictures (with 8GB SD/MMC card)	
<b>Self- timer</b>	2 second / 10 second delay	
<b>Exposure</b>	Automatic/ manual (-2.0EV~+2.0EV, 0.3EV/step)	
<b>Function modes</b>	Video Recording, Still photo, Playback	
<b>File format</b>	Video: AVI	Photo: JPG
<b>White balance</b>	Auto	
<b>USB interface</b>	USB 2.0 interface	
<b>TV out put</b>	NTSC or PAL, selectable	
<b>Power supply</b>	Battery: 3×AAA alkaline 1.5V (Batteries not supplied)	
<b>Dimensions (LxWxH)</b>	3.9 x 2.2 x 1.5 inches (98x56x39 mm)	
<b>Weight</b>	3.5oz(100 grams) - excluding batteries	

**System requirements**

<b>System Requirements</b>	
<b>Operating System</b>	Microsoft Windows XP, Vista, 7
<b>Central Processing unit</b>	Intel Pentium III 1GHz or CPU of equal or higher performance
<b>Memory</b>	512 MB or higher
<b>Sound Card, Display Card</b>	The sound card and the display card shall support DirectX8 or higher version.
<b>CD Driver</b>	16 times speed or above
<b>Hard Disk</b>	Available space 1 GB or more
<b>Other</b>	One standard USB 1.1 or USB 2.0 interface

Please note that older or slower computers may not playback recorded video correctly (especially those recorded in High Definition format).