

Contents

Contents.....1

Function Description.....2

Notice for use.....2

System requirements.....4

Start to use.....5

Application of Attached ArcSoft MediaImpression.....12

Product specifications.....18

Standard accessories.....19

Function Description:

Welcome to purchase and use this digital video camera. Before use, please read this user manual carefully.

With this digital video camera, you can take 300,000 pixels (VGA format) and 100,000 pixels (QVGA format) video shorts or photos. With the playback function, you can playback the taken video or photos with this digital video camera; in addition, you can download the video and photo from the digital video camera into your PC. When prepared, this user manual refers to the latest information. The screens and illustrations etc in this user manual are to particularly and visually detail the operation of the digital video camera. Due to technology development and different production batches, the digital video camera herein may be different from that you buy and use.

Notice for use:**General:**

1. Never open the housing of the digital video camera; otherwise, some parts may cause electric shock.
2. Damp, pressure, collision and overheat may damage this digital video camera.

Memory and storage:

1. SD/MMC can be used (but not included in the packing list and maximal capacity 4GB).
2. When buying SD/MMC card, be sure to take the digital video camera with you so as to ensure compatibility.
3. When SD/MMC card is inserted, the memory of the digital video camera will not function.
4. SD card has a write-protect switch, which can be used to prevent wrong deletion of data. When this switch is pushed to the bottom and locked, the data in the card will be protected. However, when the card is in write-protect state, it cannot be used for shooting or deletion etc.
5. These memory cards cannot be used for permanent storage of data. You must copy the

documents in the digital video camera in the proper storage position.

6. When storing documents into the memory or the memory card, make sure that the size of the documents does not exceed the capacity of the memory.

Maintenance and care:

1. In use, always wear the wrist band so as to prevent slip.

2. Use proper protection sheath to avoid scratching the lens and screen.

3. To clean the lens, firstly blow away the dust on its surface, then use proper cloth or tissue for optical devices to clean the lens. If necessary, use lens cleanser. Never use organic cleanser to clean the digital video camera.

4. Never touch the lens with fingers.

5. When left idle for long, keep the digital video camera with the battery taken out in dry and dark place.

Other notices:

1. When switching image output between LCD display and video devices, be sure to exit from the play or record state.

2. This digital video camera is suitable the environment between 0°C- 40°C (32°F-104°F). Never keep the digital video camera in the place at extremely high temperature, such as in the car parking under the burning sun, or with much damp. In order to prevent the digital video camera from condensation, when moving from a cold place to a warm place, be sure to keep it in sealed plastic bag, and open the bag and take it out when the digital video camera reaches the indoor temperature.

3. TV programs, movies, music, images and other resources may be protected by copyright; therefore, without prior permission, the shooting/use of these resources may violate copyright laws and regulations related. Please note that the resources under the protection of copyright can be used within the permission of related laws and regulations.

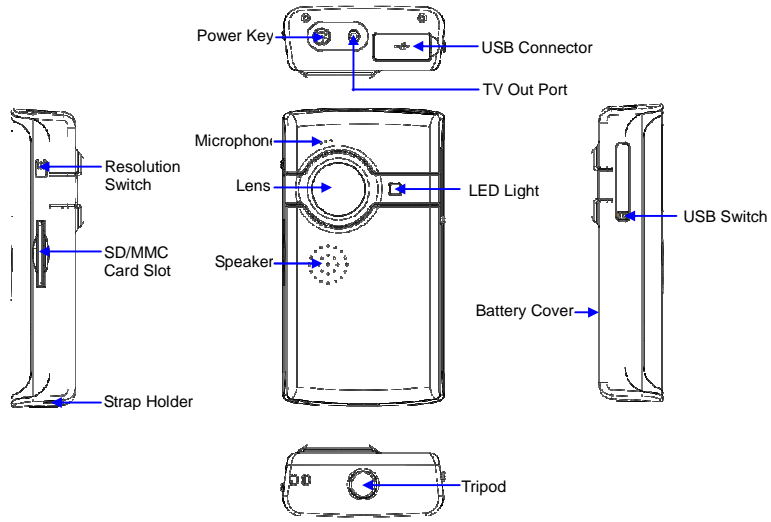
System requirements:

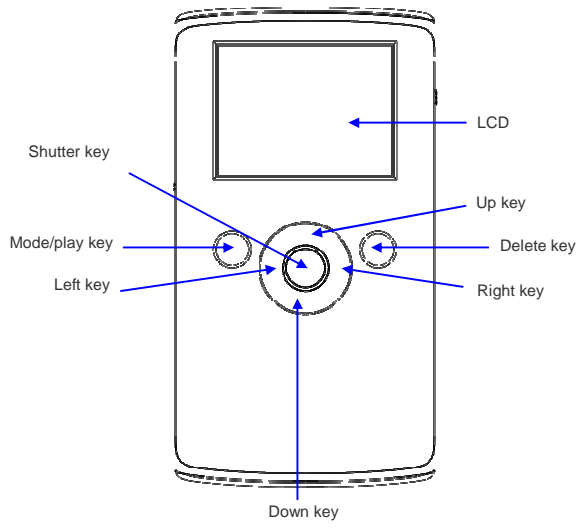
When operating and using this digital video camera, be sure to meet the requirements on the basic system for computer. It is strongly recommended to use the best computer units to operate the camera so as to bring its functions into full play. Below are the requirements on the basic system:

Operation System	Microsoft Windows Me,2000,XP, vista
CPU	Above Intel PIII667 or CPU of equal performance
Memory	Above 128 MB
Sound card and display card	DirectX8 or above.
CD-ROM	4x speed or above
Hard Disk	300 MB space above useable
Other	One standard USB 1.1 or USB 2.0 port

Start to use:

1. Appearance and Buttons





2. Basic operation

2.1 Install battery

Slide down the Battery Cover and insert two new AA alkaline batteries. Align with correct polarity of battery terminals. Close the Battery Cover.

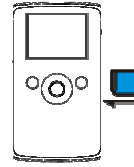
2.2 Use SD/MMC card

Insert the SD Memory card into the SD/MCC Card Slot. Push it down until the card stays latched. Do not force – check card's position according to the position mark on the camera.

Push and release inserted card if you wish to remove or replace the card.

Turn your camcorder OFF before inserting / removing the SD Card.

- Note that the SD Card has a tiny LOCK switch on the side. Set the switch to un-LOCK position to be able to store recorded videos, still pictures on inserted SD Memory Card.




2.3 Power on/off

In power-off state, press and hold the power key (⏻) to power on the camera.

In power-on state, press the power key (⏻) to power off the camera.

In power-on state, let the camera idle for 1 minute to power off the camera automatically.

In power-on state, when battery level is very low, the red  icon on the bottom left of the screen will flash and the camera will turn off after one second. You must replace the batteries.

2.4 Change mode

After power on, it will enter video record mode, press mode/play key to change mode between video record and capture.

In video record or capture mode, press left key or right to enter playback mode.

Press shutter key to exit playback mode.

2.5 Change resolution

You can select High or Low resolution for recording videos or taking still pictures.

Slide the Resolution Switch located on camcorder's side and select desired position. LCD screen will display "Hi" or "Lo" indicating selected resolution.

2.6 Video record

In video record mode, press shutter key to begin video recording, press the shutter key again to stop recording.

Press up key or down key can zoom in or zoom out the image.

In playback mode, press mode/play key to start or stop play video.

2.7 Capture

In capture mode, press the shutter key to take a photo.

2.8 Playback videos and photos

In playback mode, press left or right key to select another file.

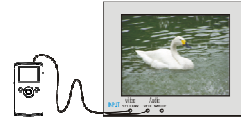
Press mode/play key to begin/stop play video, and press up key or down key to zoom in/out photo.

Note:

- While the memory full for recording, the LCD will display "Memory Full", then the Camera will stop recording automatically.
- If the SD card was locked, when you press the Shutter key, the camera LCD will display "Card Locked" and it can not recording too.
- Before insert or remove the card, please turn off the camera first. In power-on state, the camera will automatically shut down if the memory card is removed

2.9 TV output

After the camera is powered on, insert the terminal of the TV cable into the TV output port of the camera, and yellow port of the other terminal should be connected to VIDEO IN port of



TV. red(or white) port of the other terminal should be connected to AUDIO IN port of TV.

2.10 Delete files

Press the delete key once to display "Delete File?", press the delete key again to carry out deletion and display "File Deleting", if press other keys to cancel the deletion and display "Not Deleted".

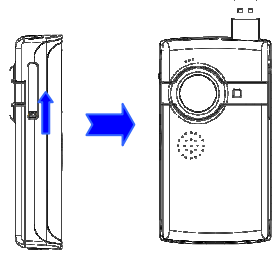
When there are no files in the memory: Press the delete key will display "No File".

2.11 Connect to PC

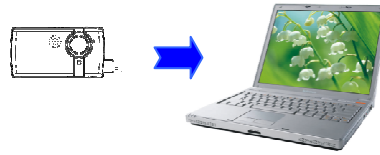
1. Slide the USB Switch UP to extend the USB connector. And turn the camcorder ON.
2. Insert camcorder USB connector into computer's USB port, or use supplied USB extension cable to make connection.

2.12 Download files from camera to PC

1. After connecting to computer, go to "My Computer" and open the "Removable Disc." The photos or videos will be saved in the \DCIM\100MEDIA folder in the removable disc. Choose the desired photo/video in the 100MEDIA folder and copy (drag with mouse) it into the target folder in the HD of the computer.
2. You can use ArcSoft VideoImpression and PhotoImpression to edit videos and photos.
3. ArcSoft VideoImpression and PhotoImpression can be installed from CD attached.



▲ Open USB port



▲ Connect camera to PC (1)



▲ Connect camera to PC (2)

Application of Attached ArcSoft MediaImpression:

How to upload your video clips to YouTube

1. Install the ArcSoft MediaImpression program

Insert the CD-ROM into the computer's CD-ROM drive. The auto-run screen will appear.

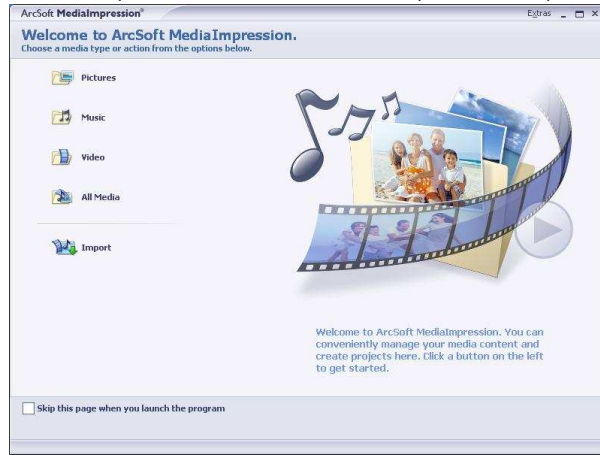




- If the CD driver does not automatically carry out or close such function, please click **autorun.exe** program under the root directory of the CD.

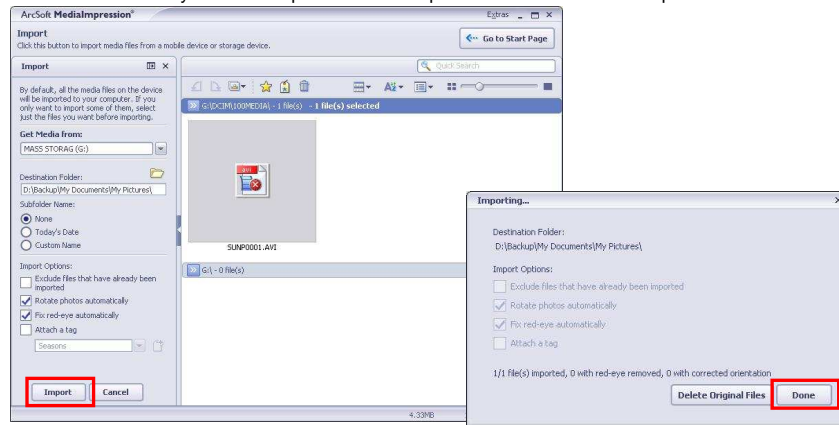
Click "Install MediaImpression", Follow on-screen instructions and complete installation
ArcSoft MediaImpression icon will appear on computer's desktop when installation is complete.

2. Using ArcSoft MediaImpression


Connect your camcorder to the computer. Double click MediaImpression icon
The MediaImpression software main screen will open on the computer's desktop:



Click  Import Option on the main screen and enter into "Import" screen. Then select the files in the camcorder that you want to upload to the computer and click  Import Option.



After importing the file has been completed, click  Done on the "Importing..." window and enter into "MediaBrowser" window.

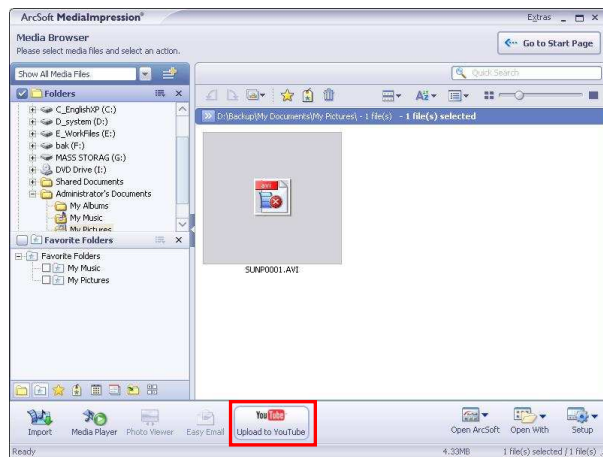
Note: On the main screen, you can also click other options such as  Video to

enter into "MediaBrowser" window. Then select the files in the computer for uploading.


Select the video you wish upload to You Tube on "MediaBrowser" screen and then click



option to access your YouTube log-in screen.



On "Login" screen, please enter your YouTube Username and Password (you can select the corresponding option underneath to save the Username and Password so that you do not need to input these data next time). Then click option.

When "Upload to YouTube" screen appears, fill in Title, Description, etc. Then click  option and start uploading selected video.



Click "Cancel" if you wish to stop upload, otherwise continue for successful uploading.

Product specifications:

Image sensor	300,000pixels
Function mode	Record, playback, mobile disk, deletion
Lens	F2.4 f=3.6mm
Focus range	120cm~infinite
Digital focusing	4x
Shutter	Electronic
LCD display	2.0 inch TFT Display
Resolution	VGA 640x480, QVGA 320x240
White balance	Automatic
Exposure	Automatic
File format	AVI
Video out	TV out
Storage media	SD/MMC card(max. 4GB)
USB port	USB2.0 port
Dimension (LxWxH)	112.6 mmx58.6 mmx28.6mm
Weight	93g (Without Battery)

Standard accessories:

1. **Installation CD**
2. **User manual**
3. **USB extension cable**
4. **TV cable**

Note: The USB extended cable with ferrite bead and the TV cable extended cable with ferrite ring is designed for exclusive use with this product. Don't use others for this product.

FCC Part 15

This equipment has been tested and found to comply with the requirements for a Class B digital device under Part 15 of the Federal Communications Commission (FCC) rules. These requirements are intended to provide reasonable protection against harmful interference in a residential installation. This equipment generates, uses and can radiate radio frequency energy and, if not installed and used in accordance with the instructions, may cause harmful interference to radio communications. However, there is no guarantee that interference will not occur in a particular installation. If this equipment does cause harmful interference to radio or television reception, which can be determined by turning the equipment off and on, the user is encouraged to try to correct the interference by one or more of the following measures:

- Re-orient or relocate the receiving antenna.
- Increase the separation between the equipment and receiver.
- Connect the equipment into an outlet on a circuit different from that to which the receiver is connected.
- Consult the dealer or an experienced radio/TV technician for help.

Do not attempt to repair or modify this equipment.

Warning: Changes or modifications to this equipment not expressly approved by the party responsible for compliance could void the user's authority to operate the equipment.