

Digital Camcorder

User Manual



Introduction

Congratulations on your purchase of this digital video camera. Before using the camera, please read this user manual carefully. With this digital video camera you can take both video clips and still photos. The illustrations in this user manual are to visually detail the operation of the digital video camera.

Notice for use

General:

1. Never open the housing of the digital video camera as some parts may cause an electrical shock.
2. Moisture, extreme pressure and overheating may damage this digital video camera.

Memory and storage:

1. SD/MMC/SDHC cards are compatible with this camera, with a maximum capacity of 16GB.
2. When buying a SD/MMC/SDHC card, take the digital video camera with you to ensure compatibility.
3. When a SD/MMC/SDHC card is inserted, the internal memory of the digital video camera will not function.
4. The card slot has a write-protect switch, which can be used to prevent accidental deletion of data. When this switch is pushed to the bottom and locked, the data in the card will be protected. However, when the card is in write-protect state, it cannot be used for shooting or deleting, etc.
5. When storing documents using the internal memory or the memory card, make sure that the size of the documents does not exceed the capacity of the memory.

Maintenance and care:

1. To clean the lens, first blow away dust on its surface, then use cloth or tissue to wipe the lens. If necessary, use lens cleanser.
2. Avoid touching the lens with your fingers.
3. When left idle for long periods, remove the batteries from your digital video camera and store in a dry and dark place.

Miscellaneous:

1. When switching video output between LCD display and video devices, be sure to exit from the 'play' or 'record' state.
2. This digital video camera is suitable for environments between 0 °- 40 ° C or 32 °-104 ° F. Never keep the digital video camera in extremely high temperatures, such as a car parked in the sun. Never keep the digital video camera in damp or moist places. In order to prevent the digital video camera from condensation, when moving from a cold to a warm place, be sure to keep it in sealed plastic bag, and open the bag and take it out when the camera reaches the indoor temperature.
3. TV programs, movies, music, images and other resources may be protected by copyright; therefore, without prior permission, the shooting/use of these resources may violate copyright laws and regulations related. Please note that the resources under the protection of copyright can be used within the permission of related laws and regulations.

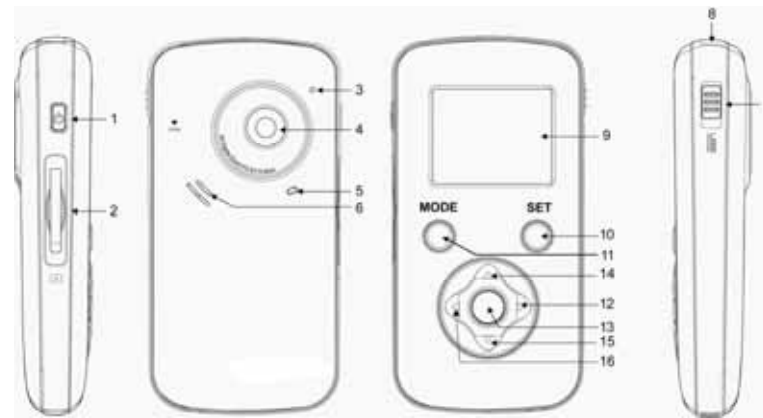
System requirements

When operating and using this digital video camera, be sure the computer you are using meets some basic requirements. Doing so will allow you to operate the camera to its full functionality. Below are the requirements:

Operation System	Microsoft Windows 98, 2000,XP, Vista, Windows 7
CPU	Above Intel PIII667 or CPU of equal performance
Memory	Above 128 MB
Sound card and display card	DirectX8 or above.
CD-ROM	4× speed or above
Hard Disk	1 GB space above useable
Other	One standard USB 1.1 or USB 2.0 port

Getting to know your camera

1. Appearance and Buttons



- | | |
|--------------------------|--------------------|
| 1. Power Key | 9.LCD panel |
| 2. SD/MMC SDHC Card Slot | 10.Set Key |
| 3.Microphone | 11.Mode Key |
| 4.Lens | 12. Right Key |
| 5.Busy indicator | 13. Confirm/OK key |
| 6.Speaker | 14.UP key |
| 7. USB Switch | 15.Down key |
| 8.USB Connector | 16.Left key |

2. Basic operation

2.1 Installing the battery

Slide down the back cover and insert three new AAA alkaline batteries. Align with correct polarity of battery terminals. Close the back cover.

2.2 Using a SD/MMC/SDHC card

Turn your camcorder OFF before inserting / removing the SD Card.

Insert a memory card into the SD/MCC/SDHC card slot. Push it down until the card stays latched. Do not force – check card's position according to the position mark on the camera.

Push and release inserted card if you wish to remove or replace the card.

- Note that the SD Card has a tiny LOCK switch on the side. Set the switch to the un-LOCK position to store recorded videos and still pictures.

2.3 Powering on/off

In the power-off state, press and hold the power key to power on the camera.

In the power-on state, press the power key to power off the camera.

In the power-on state, let the camera idle for 1 minute (default) to power off the camera automatically.

In power-on state, when the battery level is very low, the camera will turn off after several seconds and you must replace the battery.

2.4 Menu Setting

Under picture taking/recording mode, press "SET" key to open set menu and then press the up/down/left/right key to select menu. Press OK or right key to enter the submenu. When selecting menu, the background of the selected menu option will be displayed in blue.





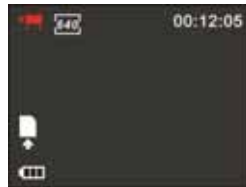
Date and time setting

Press the SET key to open the menu and then press the left and right key to enter setting menu. Press the down key to select "date and time" menu option and press OK key to enter setting window.



2.4 Change mode

After power on, it will enter video record mode, press "Mode" key to change mode among video record, still camera and playback.



2.5 Video record

Your camera will power on in the video record mode. To record a video press the Confirm/OK key to start video recording. Timing began to appear red words on the right top of the screen. The time While recording, press the Confirm/OK key again to stop recording.

In the video record mode, you can use the zoom feature by pressing the up or down key zooms in or out on the image before you record or while you are recording. While it is zooming, you can find the zoom rate on the bottom of the screen.



2.7 Still camera

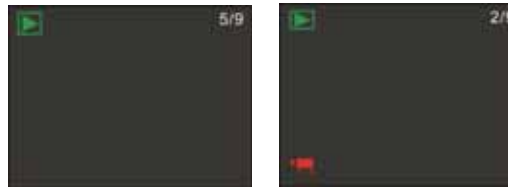
Press the Mode key to switch from video mode to still camera mode. In still camera mode, press Confirm/OK key to take a picture, by pressing the up or down key you can zoom in or out on the image.



2.8 Playback videos or photos

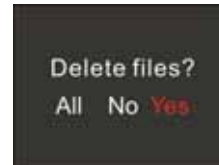
Press the mode key to change modes, from video mode to still photo mode, to playback mode. Once in playback mode, press the ◀ key or ▶ key to select the desired file. When playing a video file press the Confirm/OK key to begin playing, press and hold the up or down key to increase or decrease the volume. Press the Confirm/OK key to pause and resume playing. Press the Mode key to stop playing the video.

When viewing a Still photo press the up key or down key to zoom in or out on the image. While zooming, pressing the Confirm/OK key can enter pan mode. At this time you can press the direction key to move the photo to view in LCD. You will find a red icon of "" if it is a video.



2.9 Delete files

In playback mode, press the Set key once to display "Delete File? (ALL/YES/NO)", then press left or right key to select ALL, YES or NO, press the Confirm/OK key to confirm the action.



3. Connect to PC

- 3.1 Turn the camcorder on. Slide the USB switch up to extend the USB connector.
- 3.2 Insert the camera's USB connector into computer's USB port, the screen of the camcorder will show "MSDC"(as following picture)

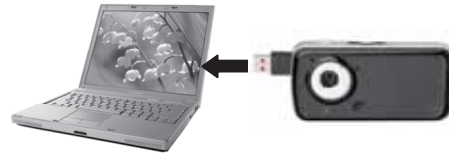


4. Download files from the camera to PC

- 4.1 After connecting to a computer go to "My Computer" and open the "Removable Disk." The videos will be saved in the \DCIM\ 100MEDIA folder in the removable disk. Choose the desired video in the 100MEDIA folder and copy (drag with mouse) it into a folder of your choice in the computer. If using an SD card there will be 2 removable disks, one for the internal memory and the other for the SD card.
- 4.2 You can use ArcSoft Video Impression to edit videos.
- 4.3 ArcSoft Video Impression can be installed from the CD included.



▲ Open USB port



▲ Connect camera to a PC without cable

Application of Attached ArcSoft Medialmpression: _____

1. Introduction interface for software installation

Put the CD attached into the CD-ROM of the computer, and then the following menu will appear:

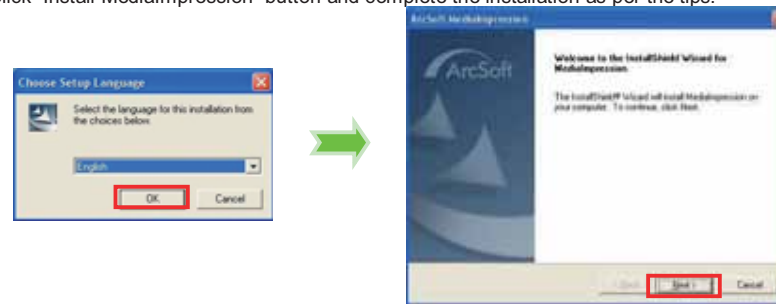


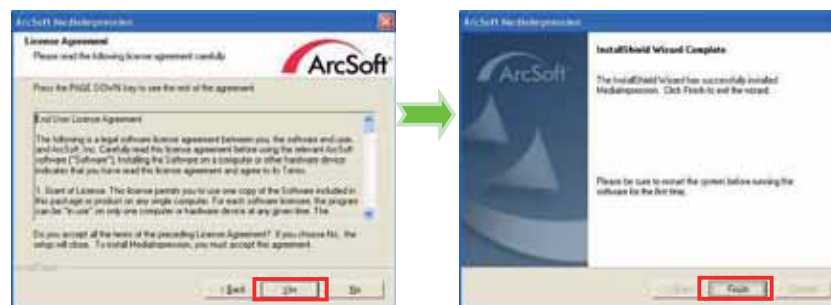
- If the CD driver does not automatically start, please double click the **autorun.exe** program under the root directory of the CD.

2. MediaImpression Installation and Use:

Install MediaImpression:


Click "Install MediaImpression" button and complete the installation as per the tips.





After installation, please restart the computer.

Run MediaImpression :

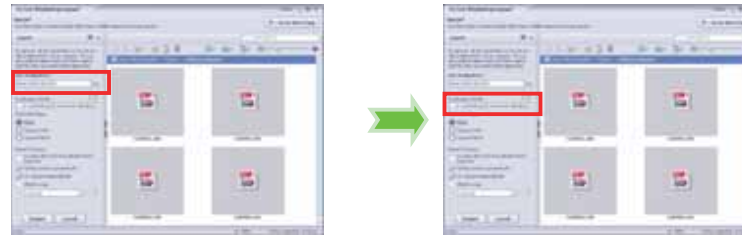
Double click the  icon on the desktop or follow "Start → Programs" to open MediaImpression.



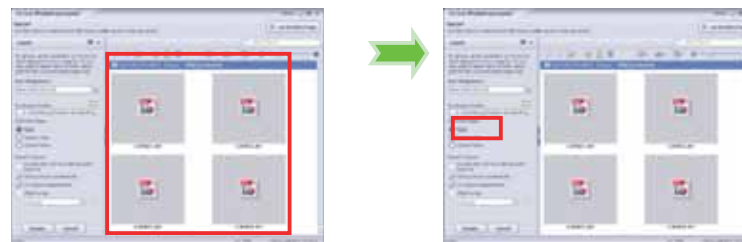
After starting MediaImpression, click "Import" to import the media.



Choose the video camera storage and choose the output location.



Choose require file and click import. The selected file will be stored in the output location.



Click "Go to start page" to return to the main screen. Click "Video" or "All media" to use the "YouTube" function.



Choose the file and click "Upload to YouTube".



Enter your username and password to login to YouTube to execute your upload.

Login

Acrobat MediaSource needs your authorization before uploading files to your YouTube account.

YouTube Username:

YouTube Password:

Save YouTube Username Save YouTube Password

Login Cancel

Product specifications:

Image sensor	0.3 Mega Pixels
Function mode	Video Recorder, Still camera, Playback
Lens	F2.8, f=3.8mm
Digital Zoom	4×
Shutter	Electronic
LCD display	1.77 inch TFT Display
Resolution	Video: VGA (640x480) @30fps;QVGA(320x240)@30fps Still photo: default to 0.3M (640x480); interpolated to 1MP(1024x768)
White balance	Automatic
Exposure	Automatic
File format	(Video)AVI, (Photo)JPG
Video out	N/A
Storage media	SD/MMC/SDHC card(max. 8GB)(2GB memory card included)
USB port	USB 2.0 port
Dimension (LxWxH)	114mm × 58mm × 23mm

FCC Warning:

This device complies with Part 15 of the FCC Rules. Operation is subject to the following two conditions: (1) this device may not cause harmful interference, and (2) this device must accept any interference received, including interference that may cause undesired operation.

NOTE: changes or modifications not expressly approved by the party responsible for compliance could void the user's authority to operate the equipment.

This equipment has been tested and found to comply with the limits for a Class B digital device, pursuant to Part 15 of the FCC Rules. These limits are designed to provide reasonable protection against harmful interference in a residential installation. This equipment generates, uses and can radiate radio frequency energy and, if not installed and used in accordance with the instructions, may cause harmful interference to radio communications. However, there is no guarantee that interference will not occur in a particular installation. If this equipment does cause harmful interference to radio or television reception, which can be determined by turning the equipment off and on, the user is encouraged to try to correct the interference by one or more of the following measures:

- Reorient or relocate the receiving antenna.
- Increase the separation between the equipment and receiver.
- Connect the equipment into an outlet on a circuit different from that to which the receiver is connected.
- Consult the dealer or an experienced radio/TV technician for help.