

Digital Video Camera User Manual



HD1Z

Contents

Contents.....1
Introduction.....2
Notice for use.....2
System requirements.....4
Getting to know your camera.....6
 1. Appearance and Buttons.....6
 2. Basic operation.....8
 3. Connect to PC.....12
 4. Download files from camera to PC.....13
Application of attached Software.....14
 1. Introduction interface for software installation.....14
 2. MediaImpression Installation and Use.....15
 3. UEZ Link Introduction and Use.....20
Product specifications.....27
Included materials.....28
Remarks.....29

Introduction

Congratulations on your purchase of this digital video camera. Before using the camera, please read this user manual carefully. The HD1Z's main purpose is to shoot videos. It is also equipped with a secondary still shot feature. Please note that this is not meant to replace a regular still shot or digital camera. It is only a side feature.

The illustrations in this user manual are to visually detail the operation of the digital video camera.

Notice for use

General:

1. Never open the housing of the digital video camera as some parts may cause an electrical shock.
2. Moisture, extreme pressure and overheating may damage this digital video camera.

Memory and storage:

1. SD/MMC/SDHC cards are compatible with this digital video camera, with a maximum capacity of 16GB.
2. When buying a SD/MMC/SDHC card, take the digital video camera with you to ensure compatibility.
3. When a SD/MMC/SDHC card is inserted, the internal memory of the digital video camera will not function.

5. When storing documents using the internal memory or the memory card, make sure that the size of the files do not exceed the capacity of the memory.

Maintenance and care:

1. To clean the lens, the first step is to blow away dust from the surface. After doing so, use a cloth or tissue to wipe the lens. If necessary, use lens cleanser.
2. Avoid touching the lens with your fingers.
3. When left idle for long periods, remove the battery from your digital video camera and store it in a dry and dark place.

Miscellaneous:

1. When switching video output between LCD display and video devices, be sure to exit from the 'play' or 'record' state.
2. This digital video camera is suitable for environments between 0 °- 40 ° C or 32 °-104 ° F. Never keep the digital video camera in extremely high temperatures, such as a car parked in the sun. Never keep the digital video camera in damp or moist places. In order to prevent the digital video camera from condensation, when moving from a cold to a warm place, be sure to keep it in a sealed plastic bag. Open the bag and take it out when the camera reaches the indoor temperature.
3. TV programs, movies, music, images and other resources may be protected by copyright; therefore, without prior permission, do not distribute copyrighted materials.

System requirements

When utilizing the Arcsoft software that is included with the HD1Z, be sure the computer you are using meets the below system requirements:

Operation System	Microsoft Windows 98, 2000,XP, Vista, Windows 7
CPU	Above Intel PIII667 or CPU of equal performance
Memory	Above 128 MB
Sound card and display card	DirectX8 or above.
CD-ROM	4× speed or above
Hard Disk	1 GB space above useable
Other	One standard USB 1.1 or USB 2.0 port

Memories on TV 4 Software

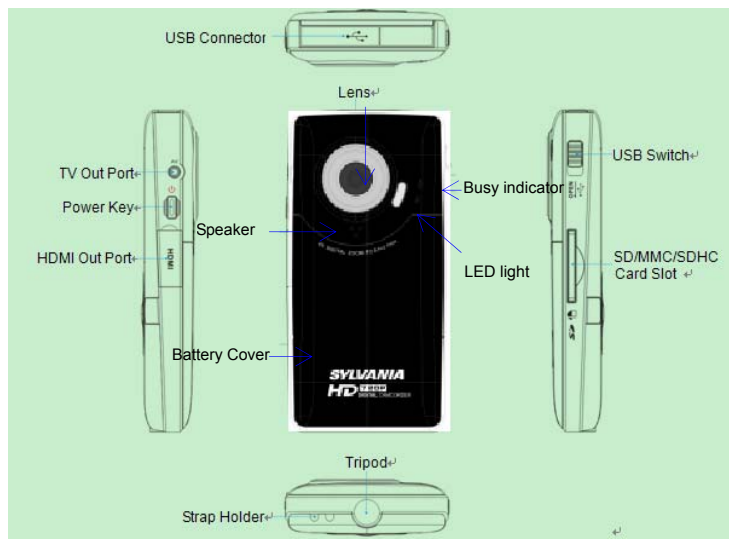
The below chart is the minimum system requirements for the Memories on TV 4 software which is also included in the giftbox:

Operation System	Microsoft Windows XP, Vista, Windows 7
CPU	Intel Pentium II 300mHz or faster
Memory	64 MB RAM (128 MB Preferred)
Sound card and display card	DirectX8.1 or above.
CDR/RW	4× speed or above to burn discs
Hard Disk	36 MB available hard disk space
MOV Support	Quicktime 6 and above

- CD/DVD writer to burn discs •
- DVD player must be able to play CD-R(W), DVD+R(W) or DVD-R(W) media

1. Appearance and Buttons

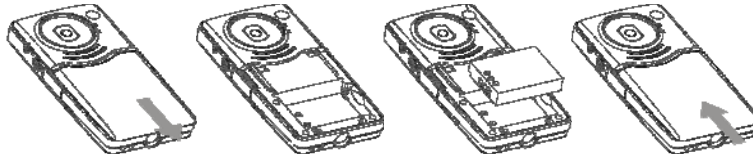




2. Basic operation

2.1 Installing the battery

Press / slide down the battery cover and insert the included lithium battery. Align with correct polarity (+,-) of battery terminals. Close the battery cover.



2.2 Charging the battery

1. Power off the camera.
2. Connect the camera to the computer USB port or to a power adapter with the USB cable to charge the battery.
3. During charging, the busy red light will be on. The busy light is located on the top of the digital video camera to the left of the lens as shown on page 7. The light will turn off when the battery is fully charged.

4. Charge the camera for about 3 hours to get maximum battery power. Battery lasts as long as 2 hours under normal usage.

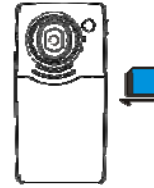
2.3 Using a SD/MMC/SDHC card

Turn your camcorder OFF before inserting / removing an SD Card.

Insert a memory card into the SD/MMC/SDHC card slot. Push it down until the card stays latched. Do not force – check card's position according to the position mark on the camera.

To remove card, push card inward and it will pop out automatically.

- Note that the SD Card has a tiny LOCK switch on the side. Set the switch to the un-LOCK position to store recorded videos and still pictures.



2.4 Powering on/off

In the power-off state, press and hold the power key to turn the camera on.

In the power-on state, press the power key to turn the camera off.

The camera will turn off automatically if it is on and left idle for 1 minute.

In power-on state, when the battery level is very low, the camera can turn off after several seconds. You must recharge the battery when this happens.

2.5 Video record

Your camera will automatically go to record mode after it is powered on. To record a video, press the shutter key to start video recording. While recording, press the shutter key again to stop recording.

In video record mode, to change the resolution from 720p HD to VGA 640/480 and vice versa, press the right to get your desired setting. Press the left key to turn the Led light on or off. You can use the zoom feature by pressing the up or down key to zoom in or out on the image before you record or while you are recording.

Please note the digital zoom feature degrades the picture the more you zoom in.

2.6 Playback videos or photos

Press the mode key to change modes, from video mode to playback mode. Once in playback mode, press the ◀ key or ▶ key to select the desired file. When viewing a video clip, press the OK key to begin playing. Press the ◀ key to rewind and the ▶ key to fast forward. Press the up key to return back to normal speed. Press the OK key to pause and resume playing. Press the down key to stop playing the video.

Press the down key again to see thumbnails of all of your videos.

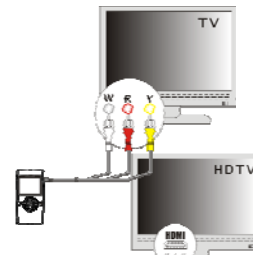
When viewing a Still photo, press the up or down key to zoom in or out of the image. While zooming, pressing the OK key can enter pan mode. At this time you can press the direction key to move the photo to view in LCD.

2.7 Still photos

Press the Mode key to switch from playback mode to still photo mode (5MP). Press the left key to turn the Led light on or off. In still photo mode, press the shutter key to take a picture. Press the up or down key to zoom in or out of the image.

2.8 Video output

After the camera is powered on, insert the terminal of the TV cable into the TV output port of the camera. The yellow port of the other terminal should be connected to the VIDEO IN port of the TV. The red (or white) port of the other terminal should be connected to the AUDIO IN port of the TV as shown in this illustration.



2.9 HDMI output

If you want to output the video and sound from the video camera to an HD TV,



insert a HDMI cable (not included) to the HDMI port of the camcorder and connect the other terminal of the HDMI cable to the HD TV.

Note: During the period of HDMI output, the video camera can only enter playback mode (you will not be able to record while the HDMI cable is connected).

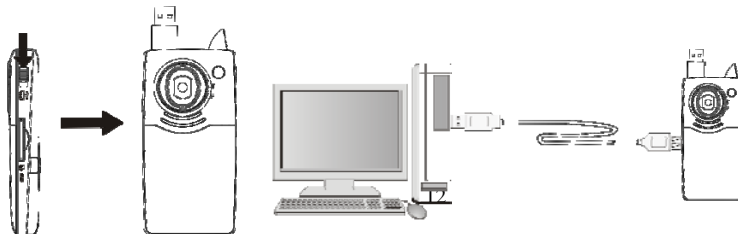
2.10 Delete files

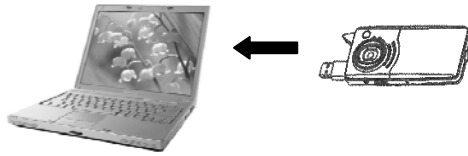
In playback mode, press the Menu key to start menu-setup, and then choose the delete item to delete files.

3. Connect to PC

3.1 Turn the camcorder on. Slide the USB switch up to extend the USB connector.

3.2 Insert the camera's USB connector into computer's USB port, or use the supplied USB extension cable to make the connection.





4. Download files from the camera to PC

- 4.1 After connecting to a computer, go to "My Computer" and open the "Removable Disk" icon. The videos or photos will be saved in the \DCIM\ 100DSCIM folder in the removable disk. Choose the desired file in the 100DSCIM folder and copy (drag with mouse) it into a folder of your choice on your computer.
- 4.2 You can use ArcSoft Meidalmpression to edit videos or photos.
- 4.3 ArcSoft Meidalmpression can be installed from the CD included.

1. Introduction interface for software installation

Put the CD into the CD-ROM of a computer, and then the following menu will appear:

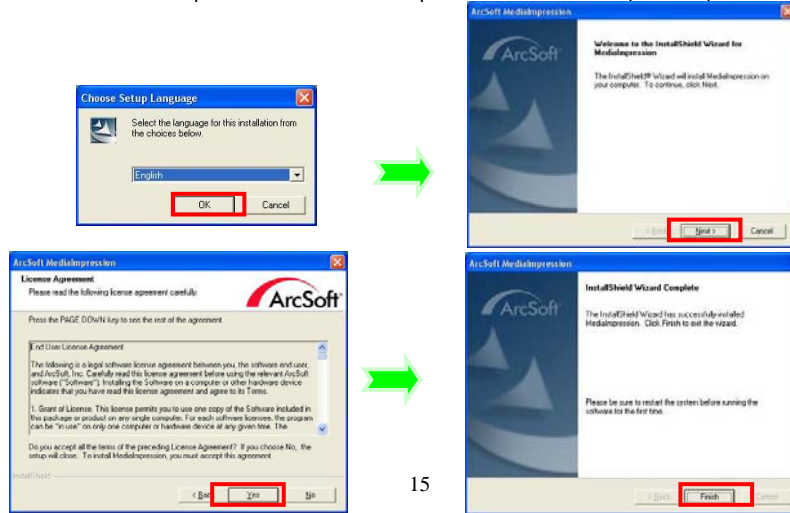


- If the above screen does not show up, click the `autorun.exe` program under the directory of the CD.

2. MediaImpression Installation and Use

Install MediaImpression:

Click "Install MediaImpression" button and complete the installation as per the tips.



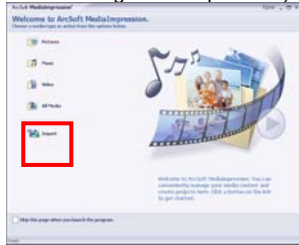
After installation, please restart the computer.

Run MediaImpression:

Double click the  icon on the desktop or follow "Start → Programs" to open:



After starting MediaImpression, click "Import" to import the media.



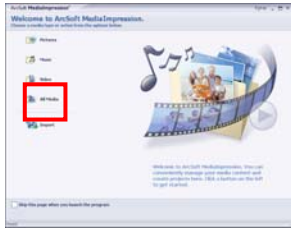
Choose the video camera storage and choose the output location.



Choose a file and click import. The selected file will be stored in the output location.



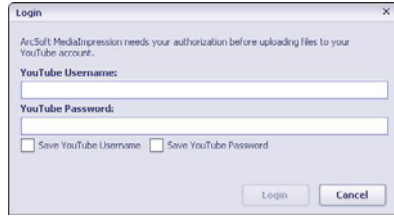
Click "Go to start page" to return to the main screen. Then click "Video" or "All media" to use the "You Tube" function.





Choose a file and click the "upload to YouTube."





Enter your username and password to login to YouTube to execute the upload.



3. UEZ Link Introduction and Use

UEZ Link can help you easily upload your videos or photos to  or . There are two ways to use the software:


I When connecting to a PC, UEZ link will pop-up automatically. Please make sure that your PC will not block any pop-up software. Otherwise it will not work.

II Double click the icon  from the CD to run. You can also copy files to your PC, and then double click the icon  to run.

The interface below will appear:

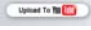


3.1 Load Files

UEZ link will automatically load all the files in the DCIM folder . You can load the desired files by clicking the button  , and then choosing the files. Once the “Browse for folder” window opens, choose “Computer” then the driver where the files are located. (This should be a “removable disk”, such as D, E, F...) Then choose the files.



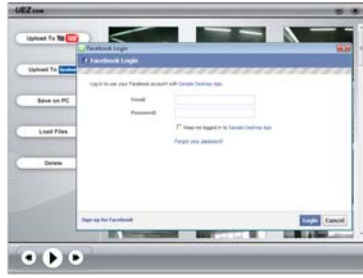
3.2 Upload to

Choose the file, and then click the button  to upload your files. Hold the Control key and click another file to choose multiple files to upload. Please make sure that you have registered and activated an account for YouTube to upload videos. Otherwise, you will not be able to upload.




3.3 Upload to

Choose the file, and then click the button  to upload your files. Hold the Control key and click another file to choose multiple files to upload. Please make sure that you have registered and activated the account for facebook to upload files. Otherwise it will not work.

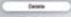


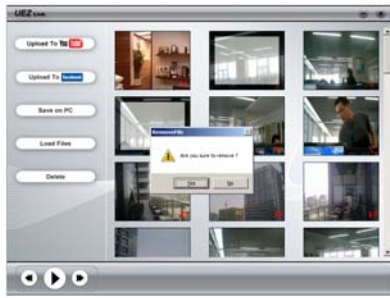
3.4 Save on PC

Choose the file, and then click the button  to save on PC. Hold the Control key and click another file to choose multiple files to save.



3.5 Delete

Choose the file, and then click the button  to delete the files. Hold the Control key and click another file to choose multiple files to delete.



Product specifications

Image sensor	5.0 Mega Pixels
Function mode	Record video, Record still photo, playback, mobile disk
Lens	F2.8,f=3.85mm
Focus range	120cm~infinite
Digital focusing	4×
Shutter	Electronic
LCD display	2.0 inch TFT Display
Resolution	Video: HD(1280x720), VGA(640x480) Still photo: 5.0MP (2592X1944)
White balance	Automatic/Manual
Exposure	Automatic
File format	(Video)AVI, (Photo)JPEG
Video out	TV out, HDMI out
Storage media	SD/MMC/SDHC card(max. 16GB)
USB port	USB 2.0 port
Dimension (LxWxH)	111mm × 57mm × 19.5mm

Included materials



Installation CD



User manual



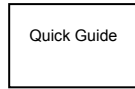
TV cable



USB extension cable



Battery



Quick Start Guide



HDMI cable

Note: The shielding USB extended cable, the TV out cable with ferrite core and the HDMI cable with ferrite core are designed for exclusive use with this product. Don't use others for this product

Warning: Changes or modifications to this unit not expressly approved by the party responsible for compliance could void the user's authority to operate the equipment.

NOTE: This equipment has been tested and found to comply with the limits for a Class B digital device, pursuant to Part 15 of the FCC Rules. These limits are designed to provide reasonable protection against harmful interference in a residential installation. This equipment generates, uses and can radiate radio frequency energy and, if not installed and used in accordance with the instructions, may cause harmful interference to radio communications.

However, there is no guarantee that interference will not occur in a particular installation.

If this equipment does cause harmful interference to radio or television reception, which can be determined by turning the equipment off and on, the user is encouraged to try to correct the interference by one or more of the following measures:

- Reorient or relocate the receiving antenna.
- Increase the separation between the equipment and receiver.
- Connect the equipment into an outlet on a circuit different from that to which the receiver is connected.
- Consult the dealer or an experienced radio/TV technician for help.